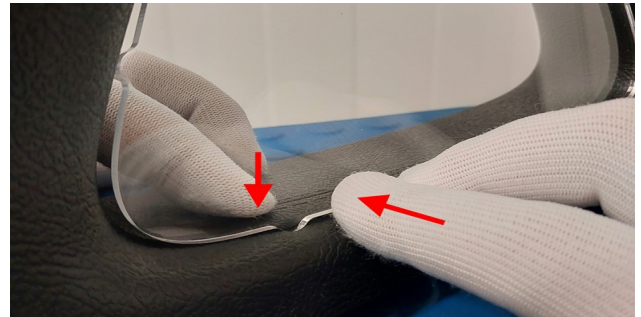
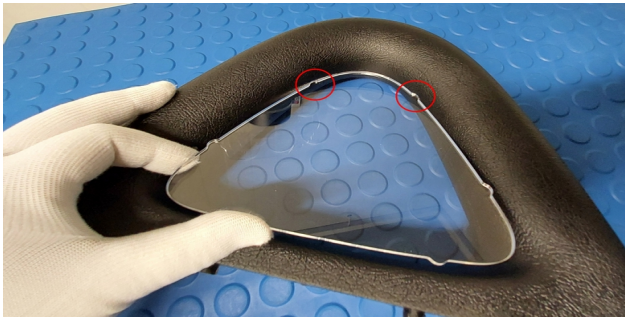




SLK R171 roll bar inserts - assembly instructions:

- 1.) Before installation, clean both roll bars with the cockpit cleaning cloth provided. To avoid leaving fingerprints, please wear the cotton gloves provided during installation.
- 2.) Position the insert with the upper retaining tabs on the center seam.
- 3.) Now press the lower retaining lugs up to the seam by pressing the foam in from behind under the retaining lugs alternately.



The retaining lugs are rounded and will not damage your roll bar. They hold the insert in the foamed casing with a positive and force fit. After dismantling, the small pressure points disappear completely within a short time.

Care instructions:

Never clean the wind deflector with harsh cleaning agents, solvents or alcohol !!!

Clean the wind deflector with lukewarm water and a few drops of dishwashing liquid. Then dry it with a soft, lint-free cotton cloth (dish towel).

Should a scratch occur, it can be easily removed with an acrylic or plexiglass polishing paste (e.g. Displex), but it also works very well with fine car paint polish.

Have fun with your new roll bar inserts and safe journeys.

Best wishes from Hamburg

Windschotts & more

