

*"and the God of love and peace  
shall be with you."*

2 Corinthians 13:11



WITH LOVE &  
DEEPEST SYMPATHY

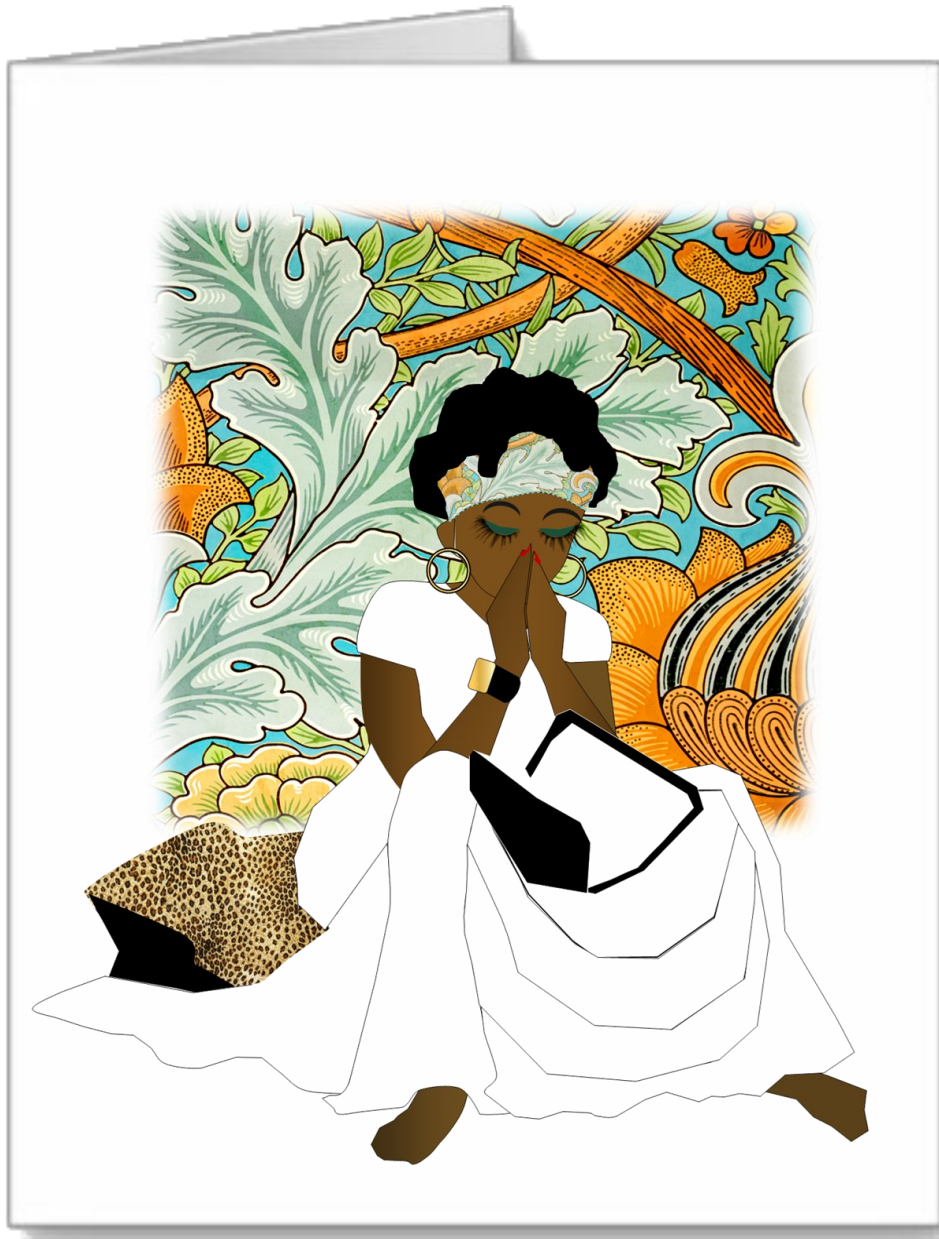
CARD: SYM 1

TEXT

My deepest, most heartfelt  
condolences to you and  
your family.

Please know that I am with you  
in spirit and pray you will remain  
in faith, peace and hope.

Blessings and Love,



## CARD: SYM 2

### TEXT

I pray the Lord will grant you peace and comfort during this time of transition and loss.

That He will surround you with a loving and supportive community of family and friends;

And that your faith will sustain you and fill your heart with beautiful memories that make you smile.

This is my sincere prayer.

**WITH SYMPATHY & LOVE,**



*May the God of hope fill you with all joy and  
peace in believing, so that by the power of  
the Holy Spirit you may abound in*

*HOPE*

**Romans 15:13**

With Deepest  
*Sympathy*



CARD: SYM 3

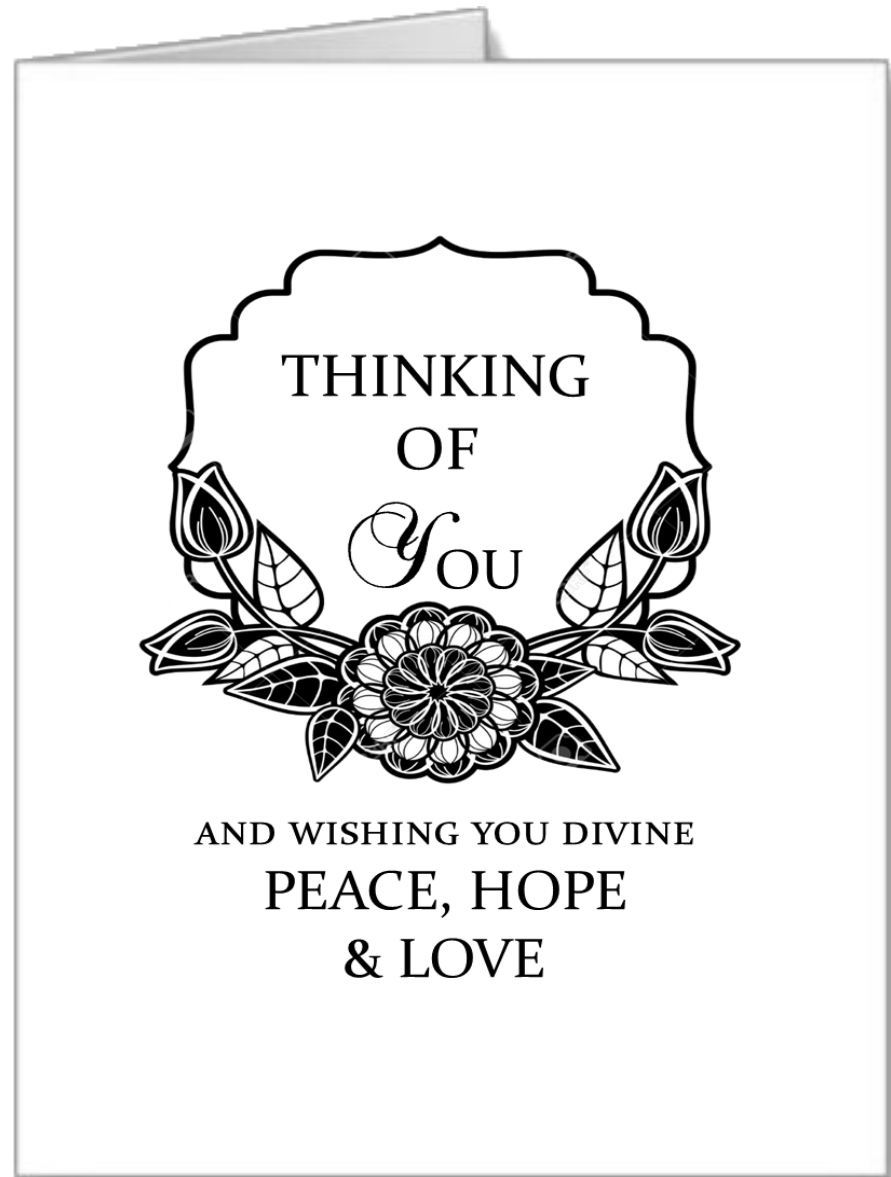
TEXT

May the Lord bless and comfort you  
and your family during this time  
of bereavement.

Please accept my sincere condolences  
and know that you have my love  
and support.

God bless and keep you in His care.

WITH LOVE,



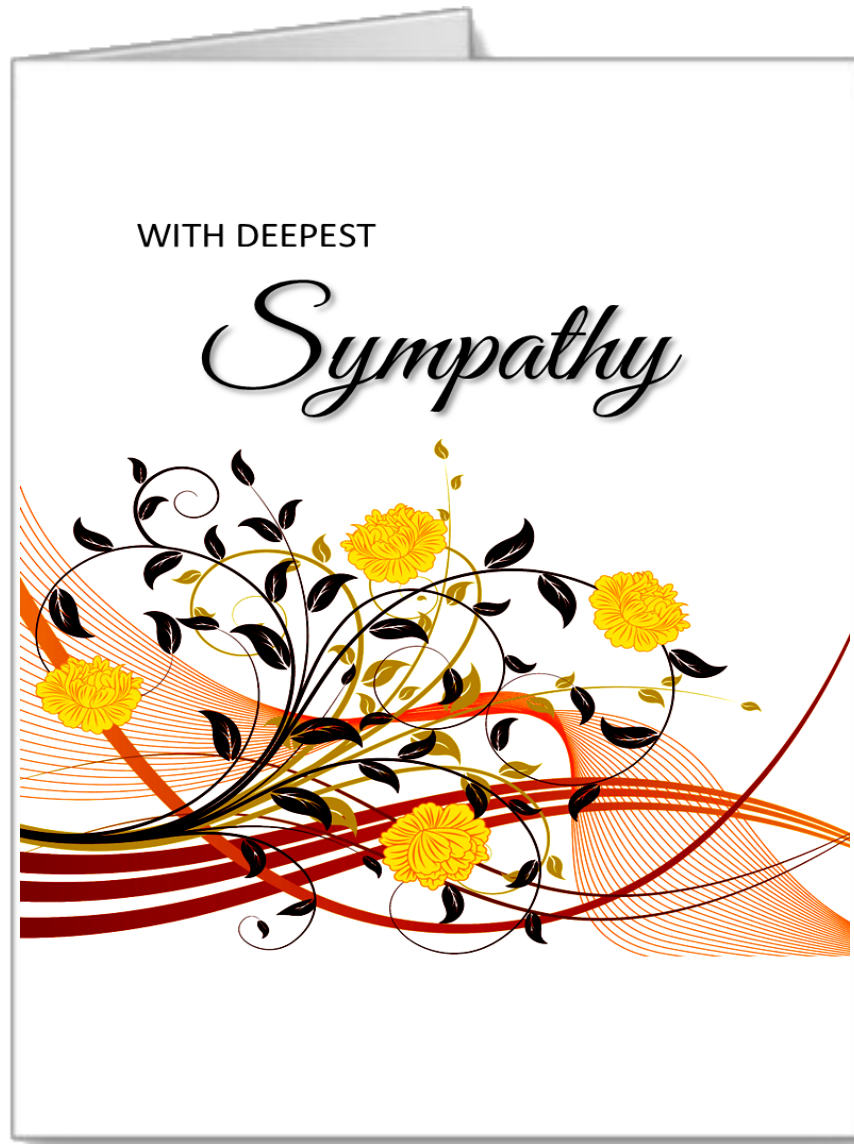
CARD: SYM 4

TEXT

I would like to extend my deepest condolences and unwavering support to you and your loved ones.

Please know that I am with you in spirit and pray that your faith will bring comfort, peace and healing.

BLESSINGS & LOVE



## CARD: SYM 5

### TEXT

*May the God of hope fill you with all joy and peace  
in believing, so that by the power of the Holy Spirit  
you may abound in hope.*

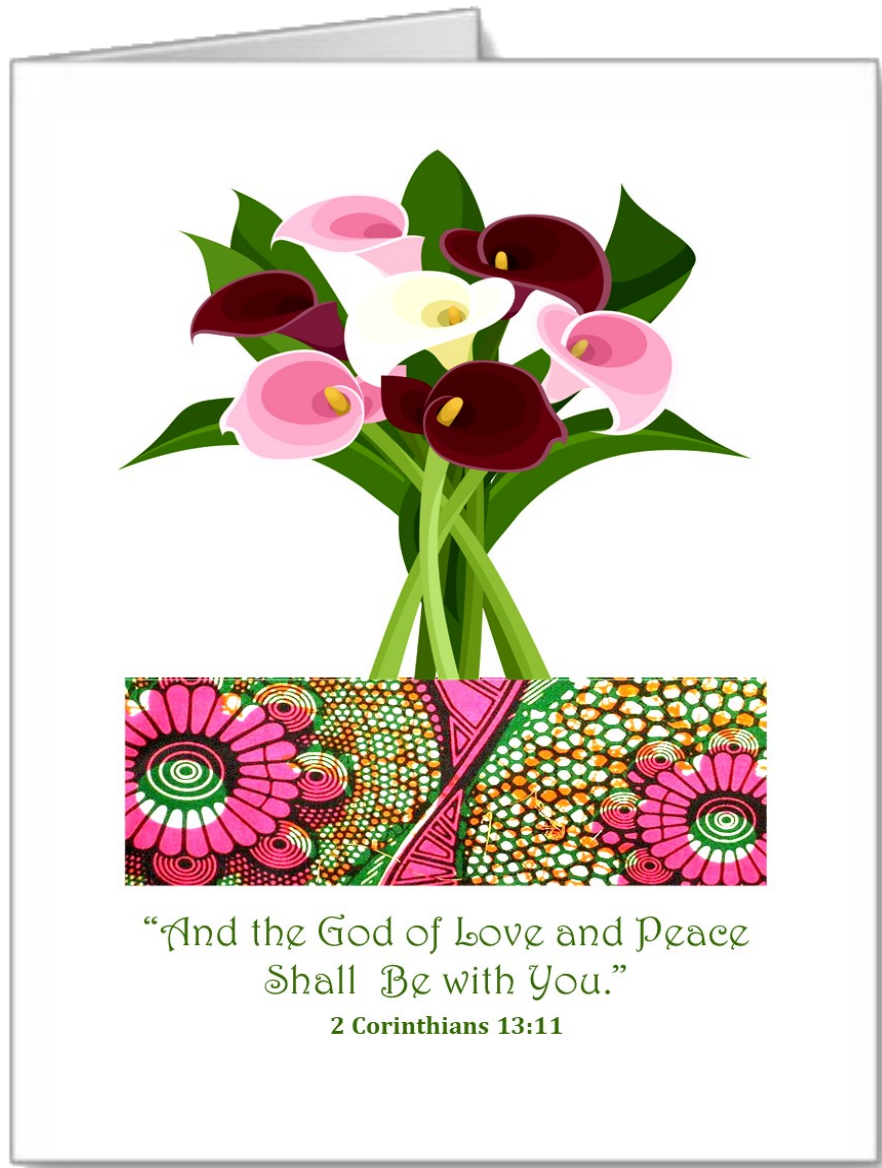
**Romans 15:13**

May our Lord bless and comfort you  
and your family during this time of  
bereavement.

Please accept my sincere condolence  
and know that you have my love  
and support.

God Bless You.

LOVE,



## CARD: SYM 6

### TEXT

I said a prayer to the LORD above to surround you with family and friends that comfort and console you with His LOVE.

I am so very sorry for your loss.  
You have my heartfelt sympathy and support.

GOD BLESS YOU.  
LOVE,





## CARD: SYM 7

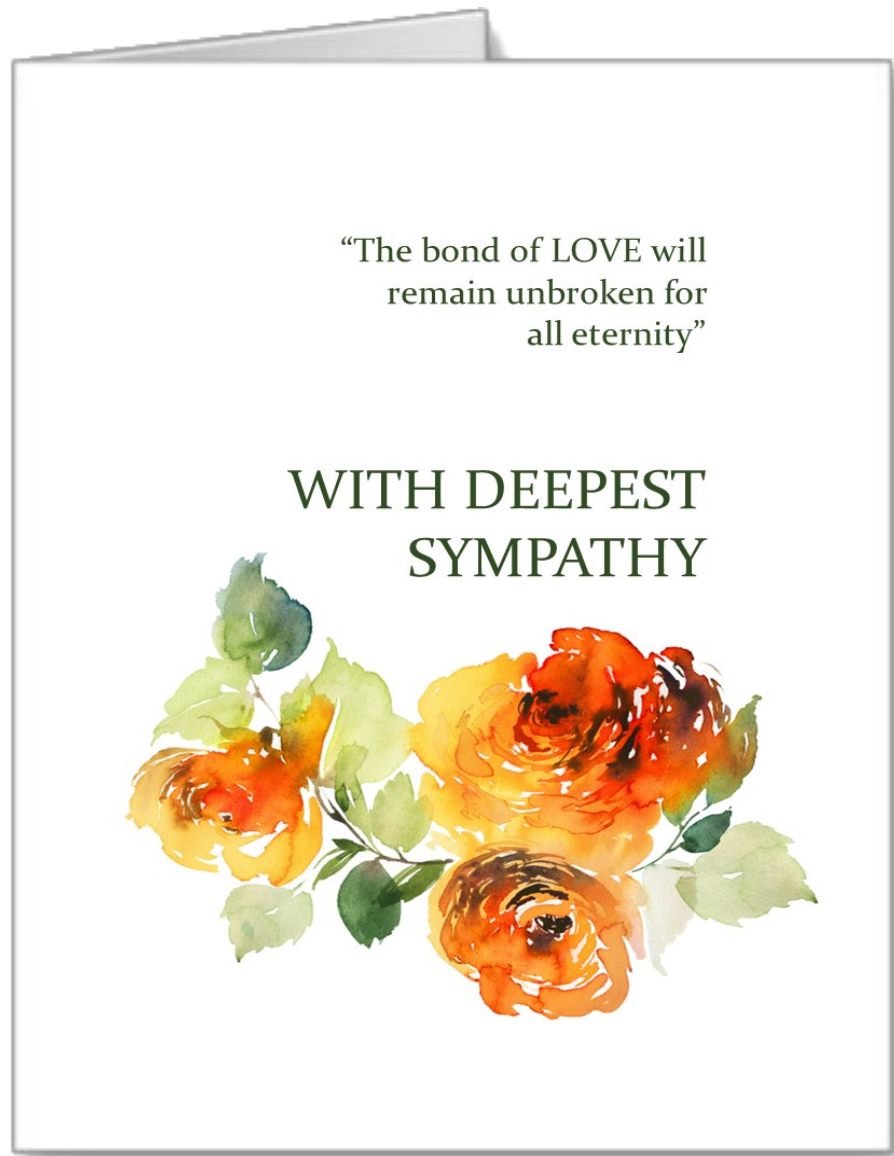
### TEXT

May the God of hope fill you with all joy and peace in believing, so that by the power of the Holy Spirit you may abound in hope.  
**Romans 15:13**

You have my deepest sympathy,  
love and support.

God Bless You.

WITH LOVE,



"The bond of LOVE will  
remain unbroken for  
all eternity"

WITH DEEPEST  
SYMPATHY



CARD: SYM 8

TEXT

My heart goes out to you and your  
loved ones during this time  
of profound loss.

May you find comfort in sweet memories,  
strength in caring friends and hope with  
each new day.

With Love and Support,



Simply Stunning 2022  
**SYMPATHY CARDS**

**\$2.50 EACH**

**\*SET OF 8: \$18.00**

**\*SET OF 12: \$25.00**

**\*FREE PERSONALIZATION**

(including modification of text for couples and groups)