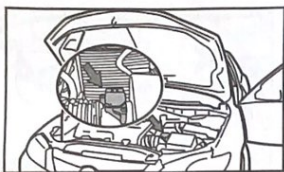
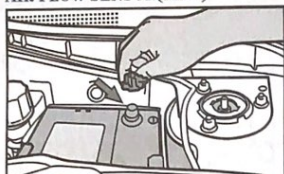


MASS AIR FLOW SENSOR INSTALLATION GUIDE



I. REMOVING THE ORIGINAL MASS AIR FLOW SENSOR(MAF)



1. Disconnect the ground cable from the battery. This prevents accidental starting and possible injury during MAF sensor installation. This also disables electric cooling fans that may come on even after the ignition has been turned off and the key removed.

NOTE: write down radio stations and other memory settings before disconnecting the ground cable. Re-program these settings after the ground cable has been reconnected. For erasing pre-programmed electronic memories(e.g. time) disconnecting the battery ground cable.

The purpose of disconnecting the battery ground cable is recover the ECU to original condition., initializing ECU and erasing data in other sensors and actuator.



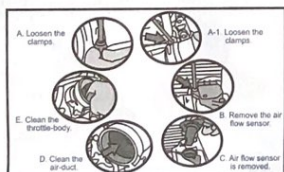
The way to test the power-off: Honk horn is the one of ways to test the power-off, no sound means the power is completely off.

If owning a specialized computer, reset ECU to zero, there is no need disconnect the battery ground cable.



2. Note how the harness connector lead plugs into the sensor or take picture before removing. This is important for correctly installing the replacement sensor.

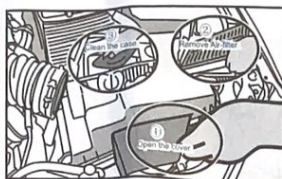
3. CAREFULLY confirm the harness is firm or not, check the connector and pins are in good condition or not.



4. Loosen the clamps securing the old MAF sensor, reuse the clamps if in good condition. Remove brackets or other mounting hardware, if necessary.

NOTE: If the MAF sensor is mounted on the throttle body, remove and save the mounting screws for replacement sensor installation.

5. Remove the air flow meter from the throttle body or air-duct of air filter, meanwhile, clean throttle body and air-duct. It can improve the speed up and less fuel consumption, check and Save MAF sensor-to-air-duct seals if in good condition, reuse in replacement unit, change the seals if it is broken.



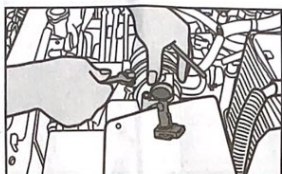
6. Remove and check the air filter change or repair the air filter if there is dust, moist or blocking in it.

II. INSTALL NEW AIR FLOW METER



1. Fasten MAF sensor between throttle valve and air-duct. Make sure the airflow direction indicated on the sensor towards engine.

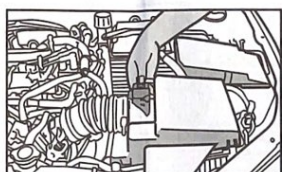
2. Carefully install seals when fasten the MAF sensor, make sure the whole duct must be airtight, ensure all the air enter the air-flow-meter when passes engine.



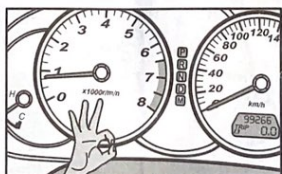
3. Carefully install the spare parts in reasonable torque, DO NOT OVER TIGHTEN.

4. connect and tighten clamp onto the air-duct, change the clamp if it is necessary.

NOTE: For the MAF sensor to work properly, the sensor/air duct connections must be airtight.

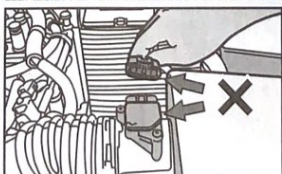


5. CAREFULLY plug the harness connector lead into the MAF sensor.



6. Due to ECU need some days to fit the new air flow meter, the "Service Engine Soon" or "Check Engine" light will come on, it is normal if ECU is slight unadapted in replaced car, and the light will go off in some days. Power-off and reset again if unnormal long time.

III. ERROR INSTALLATION DISPLAY

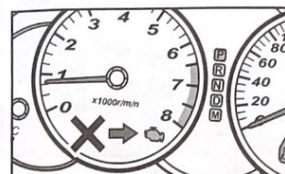


1. "Service Engine Soon" or "Check Engine" light may come on if connect improperly connection. Drivability problems may also occur on engine.



2. Connect the battery ground cable unlight, and the "Check Engine" light will come on.

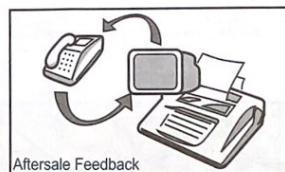
3. Start the engine, when "Service Engine Soon" or "Check Engine" light, let it in idle for a minute or two to verify correct MAF sensor operation.



4. If the "Service Engine Soon" or "Check Engine" light comes on or the engine stalls or runs roughly, turn the engine off. Observing safety precautions, Check the harness connector plug at the MAF sensor for correct installation. Also check the hardness connection at the MAF sensor relay, if so equipped. If this doesn't correct the problem, refer to the vehicle's service manual for troubleshooting instructions.



IMPORTANT: Reinstall the air flow meter or looking for professional service station to install if incorrect operation right now.



Aftersale Feedback

- ⊗ Premium Quality
- ⊗ Digital Circuit Board Design
- ⊗ Newer Air flow Design
- ⊗ 100% New Products
- ⊗ Precision Engineered Exact Fit
- ⊗ 100% High Precision Device Tested
- ⊗ Original Equipment Performance

TÜVRheinland®
Precisely Right.

TS16949

WE HAD PASSED THE CERTIFICATION
OF TS16949 AND TUV RHEINLAND