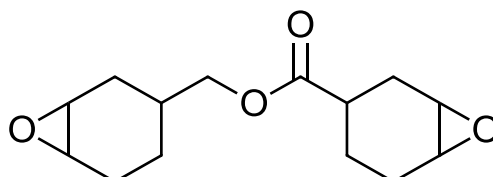


TECHNICAL DATA SHEET

Product Name : ACHWL CER 4221
 Chemical Name : 3,4-Epoxy cyclohexylmethyl 3',4'-Epoxy cyclohexanecarboxylate
 Molecular Weight : 252.3
 CAS Number : 2386-87-0
 Chemical Structure :



Specifications:

	CER 4221	CER 4221 UH	
Item	Typical Value		UNIT
Appearance	Clear Liquid	Clear Liquid	---
Viscosity	200 - 350	220 - 450	mPa·s
Epoxy EEW	128 - 145	126 - 135	g/eq
Color APHA	100 Max	50 Max	APHA
Moisture	0.05 Max	0.05 Max	%
Sodium		2 Max	ppm
Total Chlorine		100 Max	ppm
Purity (GC)	90 Min	97 Min	%

Physical Properties:

Item	Typical Value
Specific Gravity	1.175
Boiling Point, °C	354
Vapor Pressure @ 20°C, mm Hg	< 0.1
Freezing Point, °C	-20
Solubility in Water, %	0.03

Properties:

ACHWL CER 4221 is a cycloaliphatic epoxy resin made by our proprietary epoxidation using a special catalyst system. It is a liquid with lower viscosity than epi- and bis- epoxy resins for general purposes and contains no halogen impurities such as chlorine. It gives superior transparency with acid anhydride curing agents and provides cured parts with a high heat-deformation temperature.



Offering reliable & sustainable solutions

Applications:

Used for FRPs, electrical-insulating varnishes, electrical-resin porcelains, insulating sealants for semiconductors, transparent insulating sealants for light-emitting diode, ultraviolet-curing coating materials, coating curing agents, and the acid scavenger for resins containing halogen.

Mixing:

Please mix thoroughly to obtain best effect. Keep the mixer dry and acid-free prior to mixing

Safety and Stock:

Keep in stock as ordinary chemicals. Avoid exposure to air, sunlight, and acid. Wear protective goggles and gloves while using the product. Avoid direct contact with skin and eyes. Use soap to clean if skin contaminated.

Shelf-life: 36 months.

Packaging:

Available in drums, IBCs and iso-tankers

Revised 06/22/2022