



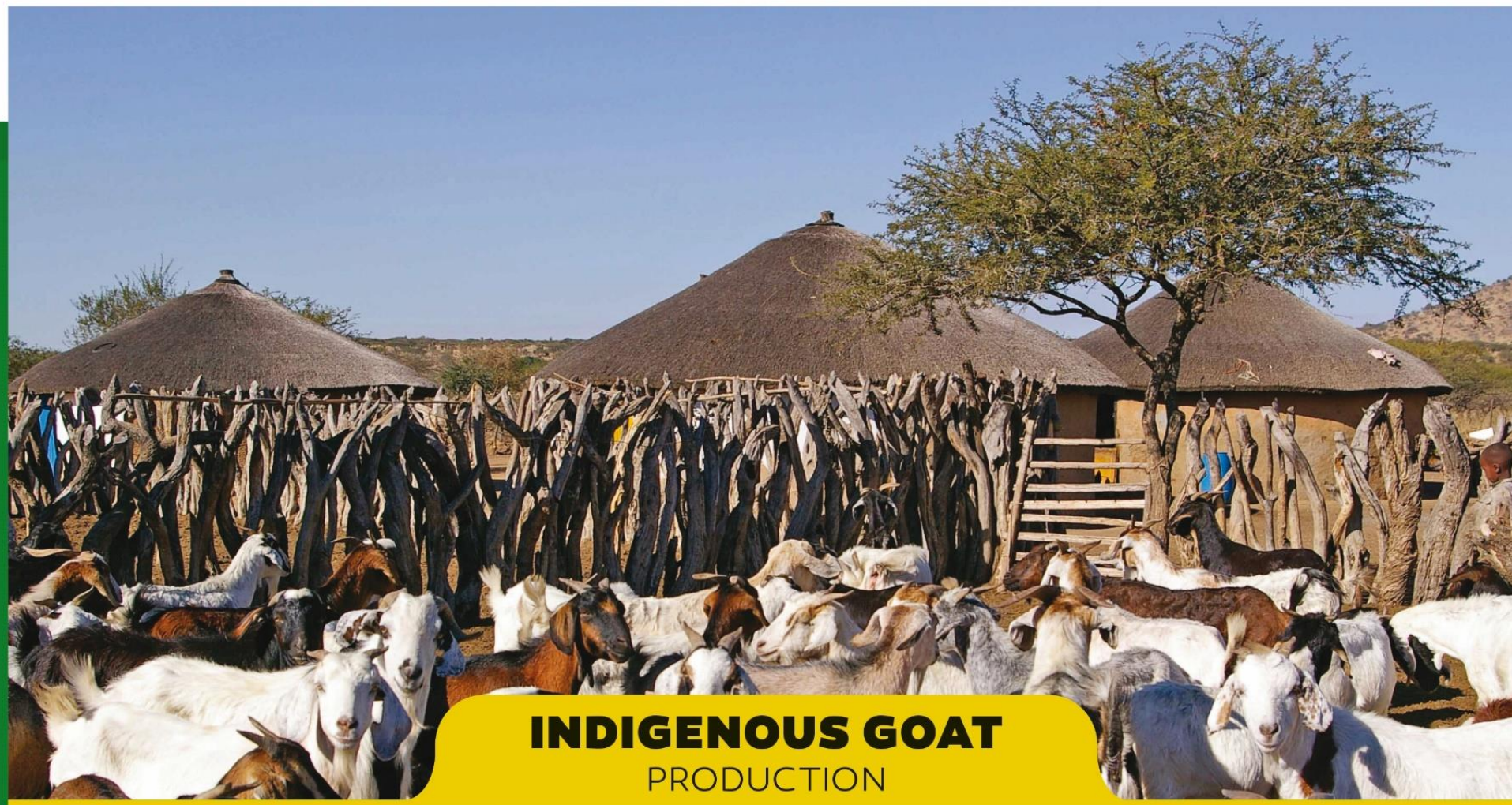
rural development & land reform

Department:
Rural Development and Land Reform
REPUBLIC OF SOUTH AFRICA



agriculture & rural development

Department:
Agriculture and Rural Development
PROVINCE OF KWAZULU-NATAL



INDIGENOUS GOAT PRODUCTION



MDUKATSHANI
RURAL DEVELOPMENT PROJECT



KWAZULU-NATAL



HPSA
SOUTHERN AFRICA

ABAFUYI MEDIA



MDUKATSHANI
RURAL DEVELOPMENT PROJECT



**rural development
& land reform**

Department:
Rural Development and Land Reform
REPUBLIC OF SOUTH AFRICA



**agriculture
& rural development**

Department:
Agriculture and Rural Development
PROVINCE OF KWAZULU-NATAL



Property of Abafuyi Media

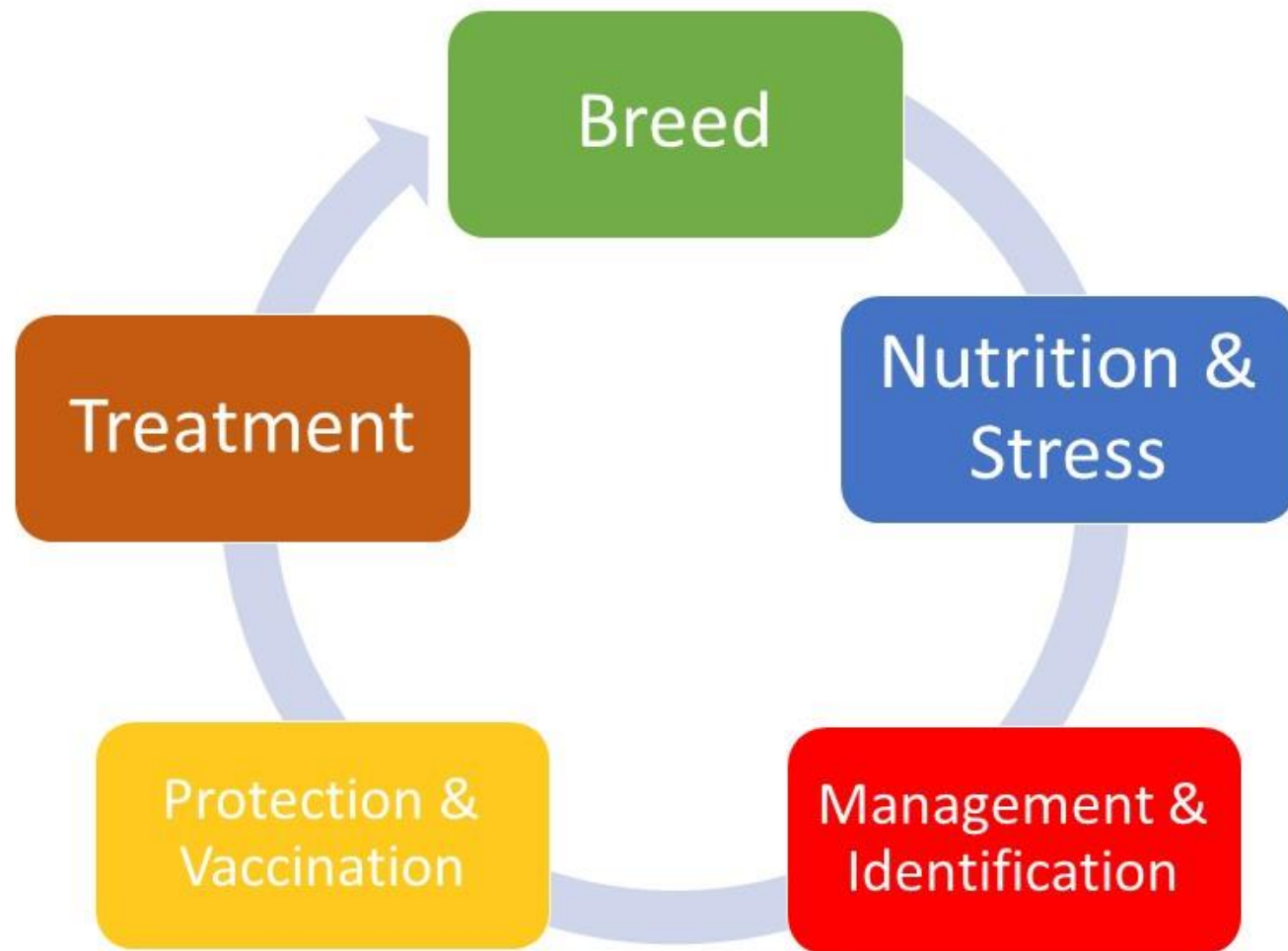
Indigenous Goat Production

1. Management interventions
2. Breed
3. A healthy goat
4. 17 point check
5. Checking age of goat
6. Condition scoring
7. Taking temperature and weighing your goat
8. Understanding veterinary interventions
9. Injecting and dosing correctly
10. Heartwater
11. Pneumonia
12. Coccidiosis
13. Orf
14. 5 Point check for internal parasites
15. Roundworms and tapeworms
16. Tapeworm cyst
17. Flukes
18. External parasites
19. Abscesses
20. Contagious eye infection
21. Mastitis
22. Abortion
23. Eating disorders
24. Hoof problems
25. Basic equipment and medicines
26. Storage and Cold Chains
27. Herd identification
28. Castration
29. Supplemental kid feeding
30. Forage growth, storage and supplements
31. Dosage form

Page references in this module are based on Goat Production Handbook

This calendar is not for sale but is distributed as part of a training program. It is available in Zulu and English from the following websites: www.mdukatshani.com or www.gapkzn.co.za or www.hpsa.org.za. It is copyrighted to **Abafuyi Media**.

Management interventions



Management interventions

Management is the most efficient way of preventing animals getting sick -different management interventions are highlighted in this table.

Listed here are 5 main management interventions.

Give an example of each and why they are important.

Which two are most important in having a healthy herd and why?

Breed



Breed- Section 1.1

What breed types do you have in your herd?

What breeds do you see in your community rams?

What negative traits do these rams bring or have?

What are their strong points?

What would outside breeds bring?

What possible problems could be introduced by outside breeds?

A healthy goat



A healthy goat- Section 2.1

Which of these is a healthy goat?

What are signs of an unhealthy goat?

In your kraal do you have more goats that are healthy or unhealthy?

What have you done that has led to your goats being in this condition?

17-point check



17-point check

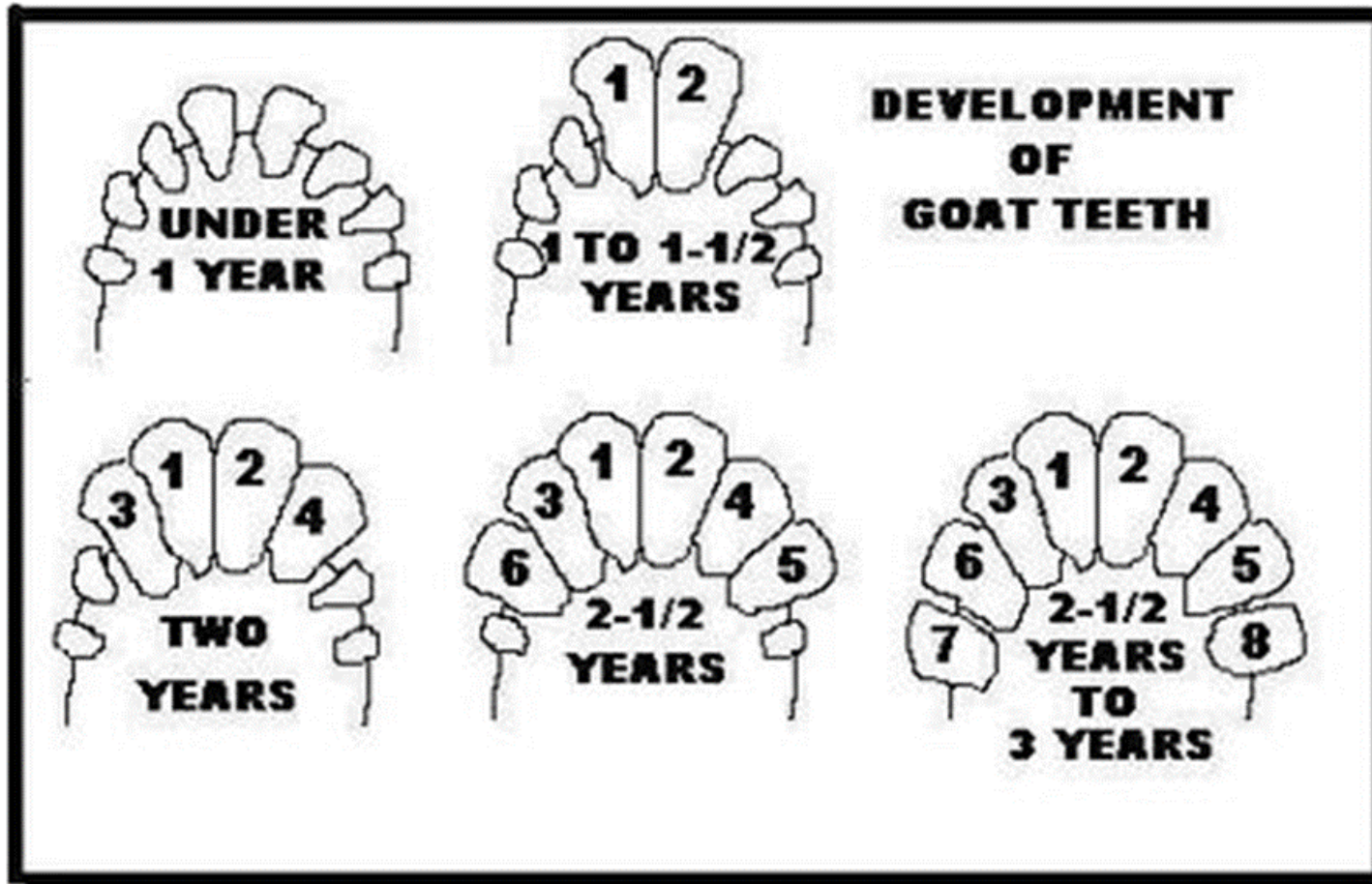
Which 6 things do you look for on the head- what does each show?

Which 4 things do you look for on the body- what does each show?

Which 4 things do you look for on the rear - what does each show?

Which 3 things do you look for on the hooves - what does each show?

Checking age of goat



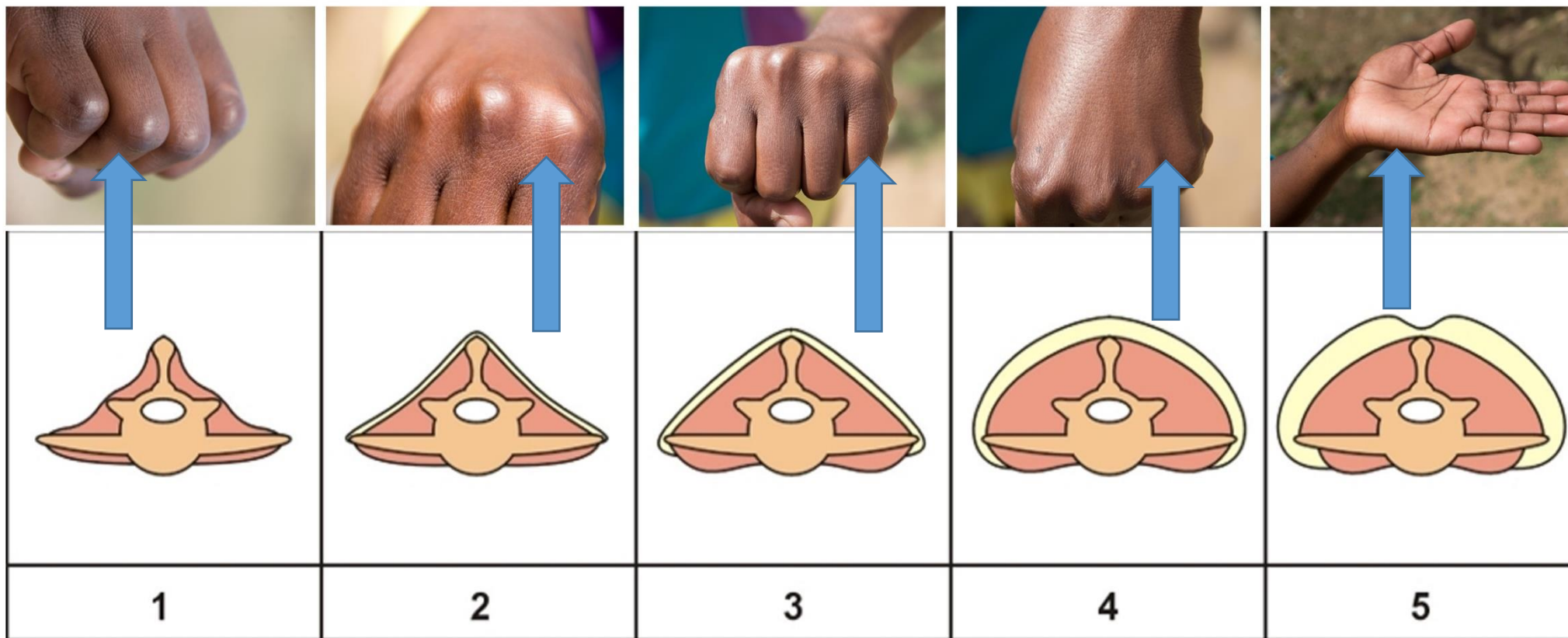
Checking age of goat- Section 2.2.2

Why is it important to know the age of your animal?

How do you check the age?

What is the link between age and health?

Condition Scoring



Condition scoring- Section 2.2.3

Why is it important to condition score your animal?

What do the different scores tell you about your animal and its health?

What is the danger of an animal being too fat?

Taking temperature and weighing your goat



Taking temperature- Section 2.2.4

Why is temperature important?

What are the important things to consider before you take the temperature?

What is the best way to take an animal's temperature in the field?

What are the temperatures per animal type?

If the animal has an abnormal temperature, what does this mean?

If the temperature is fine but the animal is still sick, what does this mean?

Weighing your goat- 2.2.5

What ways are there to weigh a goat?

What are the mistakes you can make when weighing your goat?

Why is it important to know the weight of your animal?

Describe the steps involved in weighing an animal.

Temperature Guide		
Range		
Cattle	38	39
Goats	39	40
Chickens	41	43
Sheep	38	40

Understanding veterinary interventions



Understanding veterinary interventions- Section 2.2

Which of these do you recognise?

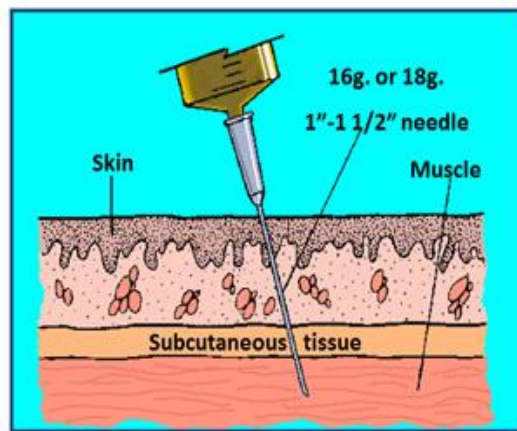
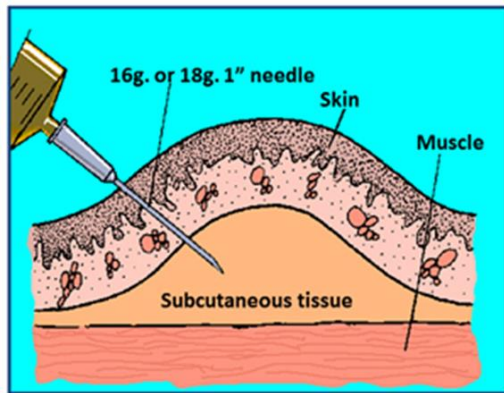
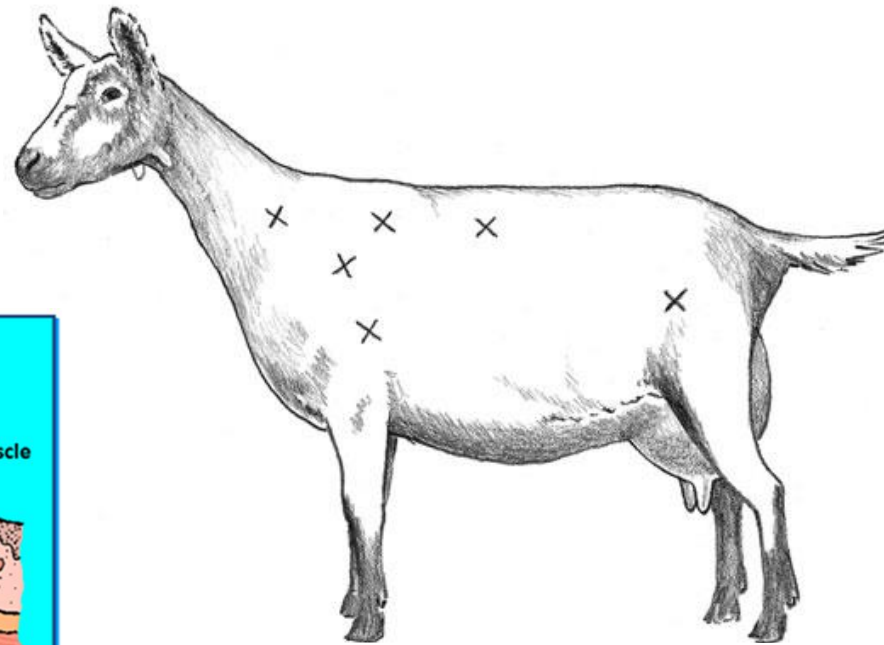
What are the different purposes of these products?

Which of these would you use for which problems?

What is the difference between short acting and long acting?

Which of these can you vaccinate with?

Injecting and dosing Correctly



Injecting Correctly- 2.2.7

When do you give an intramuscular/subcutaneous injection?

Where do you give an intramuscular/subcutaneous injection?

What happens if you inject large amounts of medicine into one spot?

What if blood starts filling up the syringe when you inject?

Are there other dangers to watch for?

What do you do to the injection site after injecting?

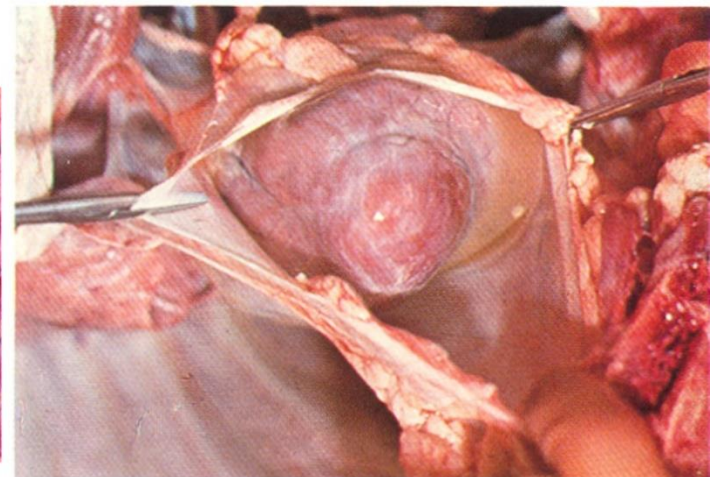
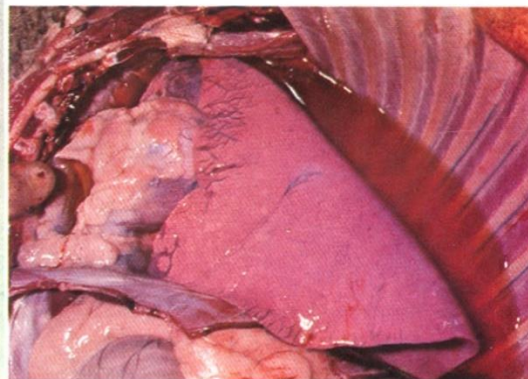
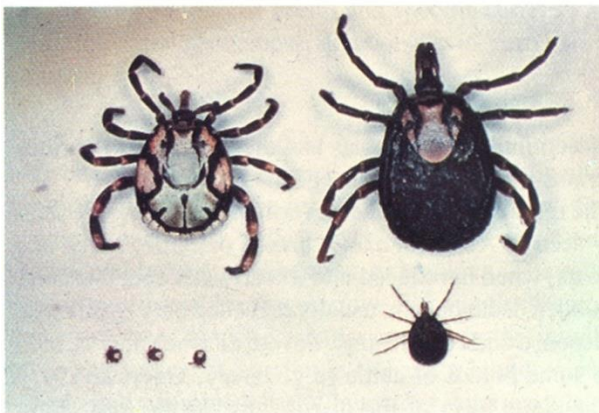
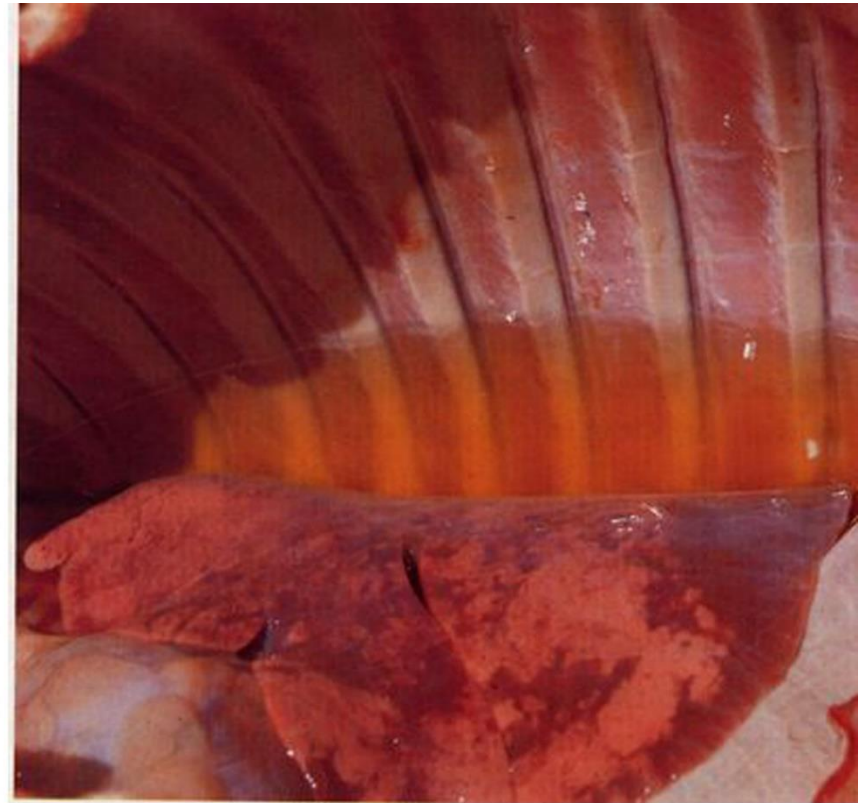
Dosing Correctly-2.2.8

What equipment do you use to give a dose to goats?

How do you dose correctly?

What happens if you dose incorrectly?

Heartwater



Heartwater- Section 3.1

Do we see it in this area?

Does it occur in males or females—old or young?

At what time of the year do we see heartwater?

What are the symptoms?

What are some local treatments?

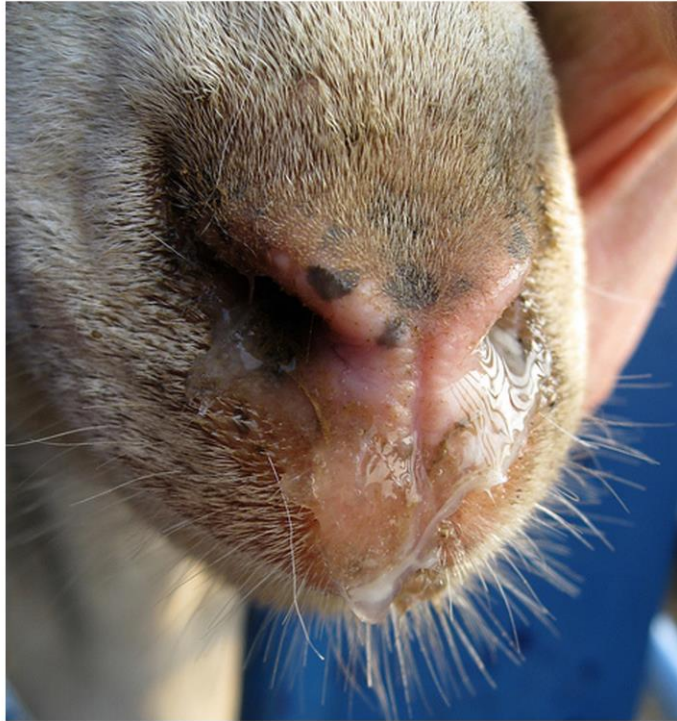
What causes it?

How can it be prevented?

How can it be treated?

Why is it dangerous to move goats from a non heartwater area to a heartwater area?

Pneumonia



Pneumonia- Section 3.2

Do we see it in this area?

Does it occur in males or females—old or young?

At what time of the year do we see pneumonia?

What are the symptoms?

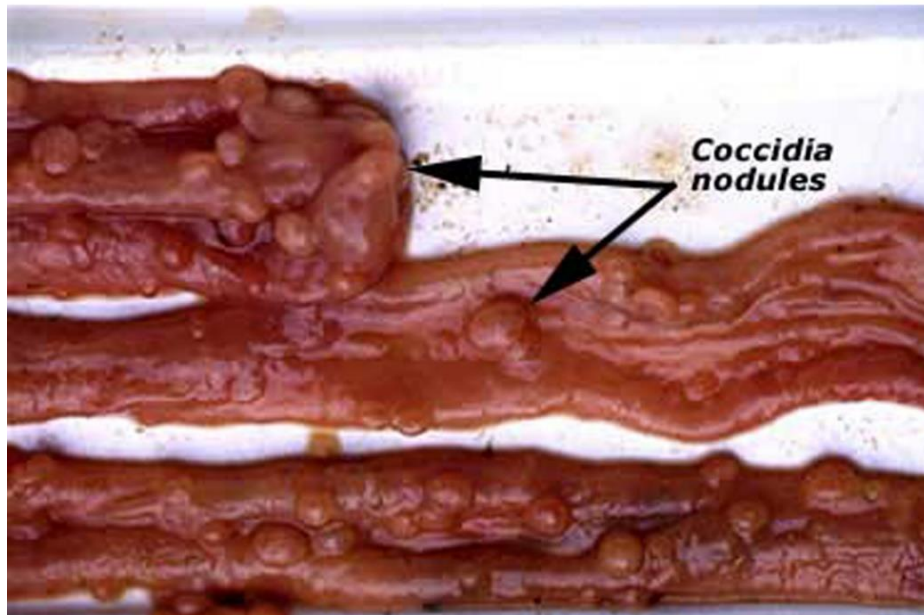
What are some local treatments?

What causes it?

How can it be prevented?

How can it be treated?

Coccidiosis



Coccidiosis - Section 3.3

How do you know whether its Coccidiosis, Worms or Scours?

Do we see Coccidiosis in this area?

What symptoms do you see with coccidiosis?

Does coccidiosis occur in males or females—old or young?

At what time of the year do we see coccidiosis?

What causes it?

How is coccidiosis spread?

What are some local treatments?

How can it be prevented?

How can it be treated?

Orf



Orf- Section 3.4

Do we see it in this area?

Does it occur in males or females—old or young?

What are the symptoms?

At what time of the year do we see this?

What are some local treatments?

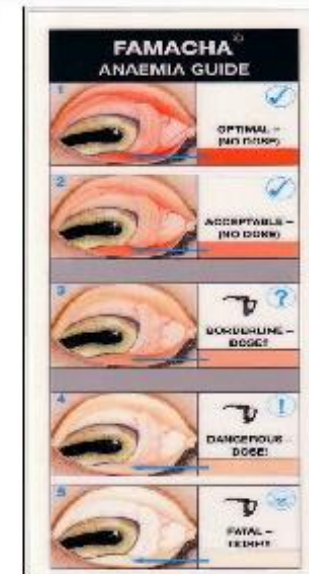
What causes it?

How can it be prevented?

How can it be treated?

Can orf spread between goats?

5 Point check for internal parasites



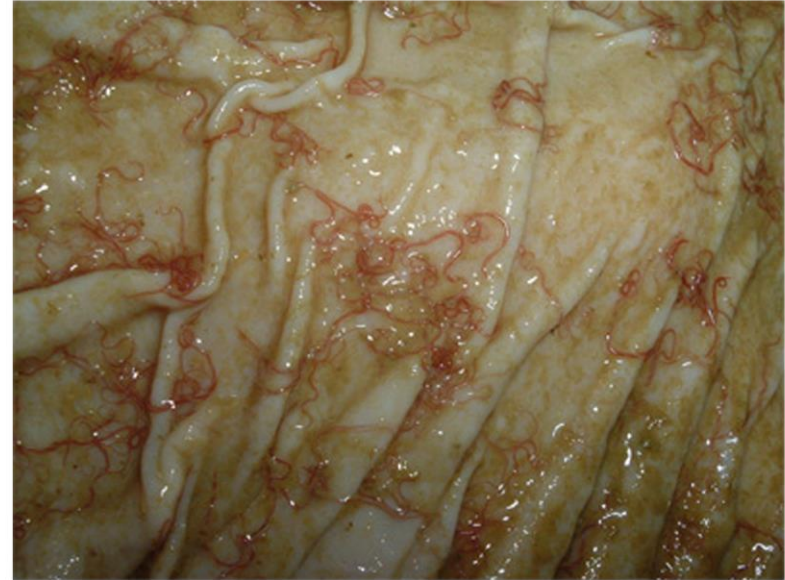
5 Point check for internal parasites- Section 4.1

What is it important to do a 5 point check?

What are you looking for in each of area that you are inspecting?

What is each area symptomatic for?

Roundworms and tapeworms



Roundworms and tapeworms- Section 4.1

Do worms occur naturally?

What makes you aware of worms?

What are the different types of worms?

When do you see them?

What are some local controls or remedies?

Do you currently deworm your entire flock?

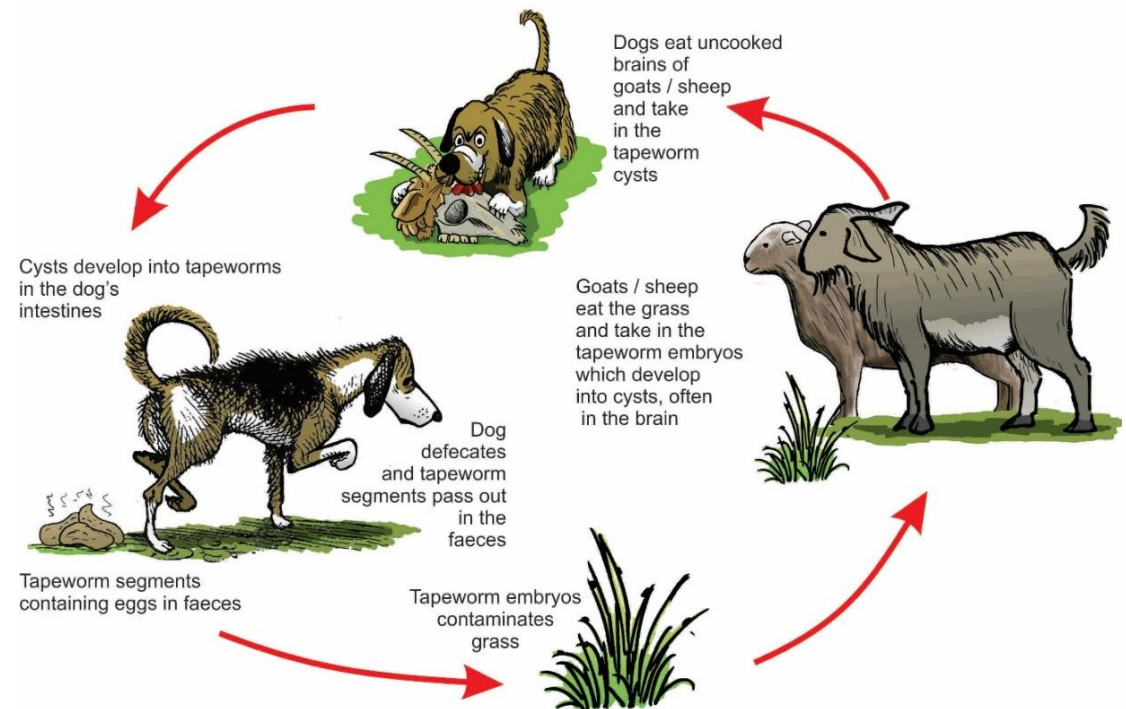
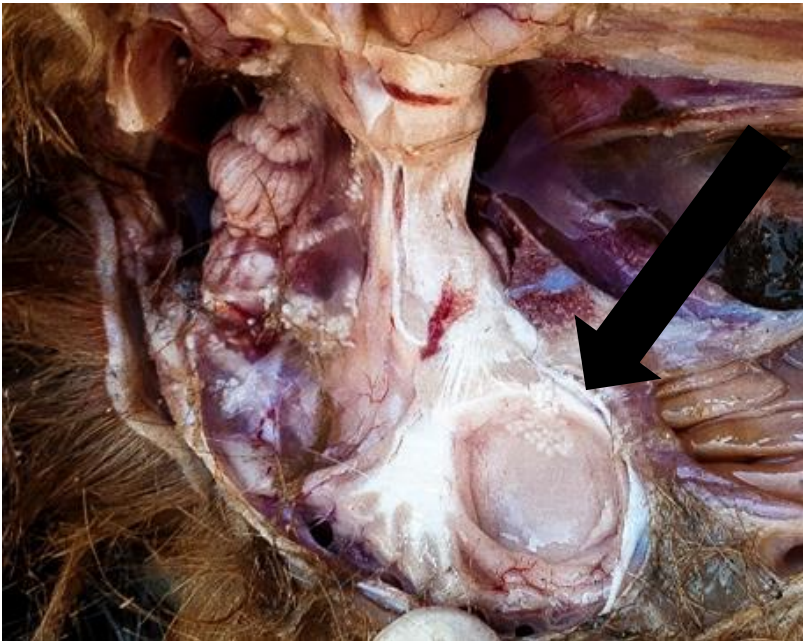
Do you use different medicines for tapeworms and roundworms?

Do you drench or selectively treat?

Do you have seasons where its worse and better?

How are worms spread?

Tapeworm cyst



Tapeworm cyst- Section 4.1.3

Do we see it in our herds?

What symptoms do we see of this in goats?

How is tapeworm cyst spread?

What can a farmer do to prevent this disease from happening?

What are some local treatments?

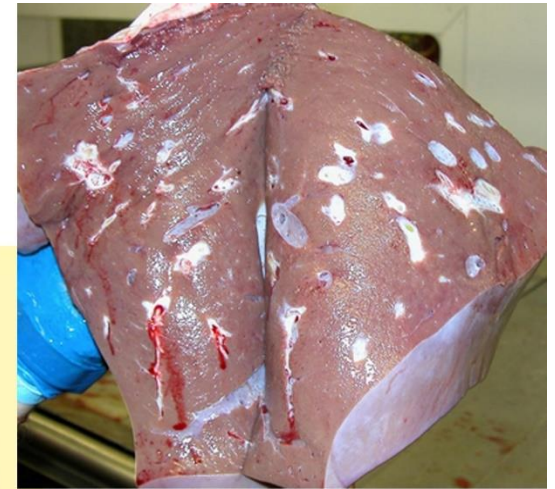
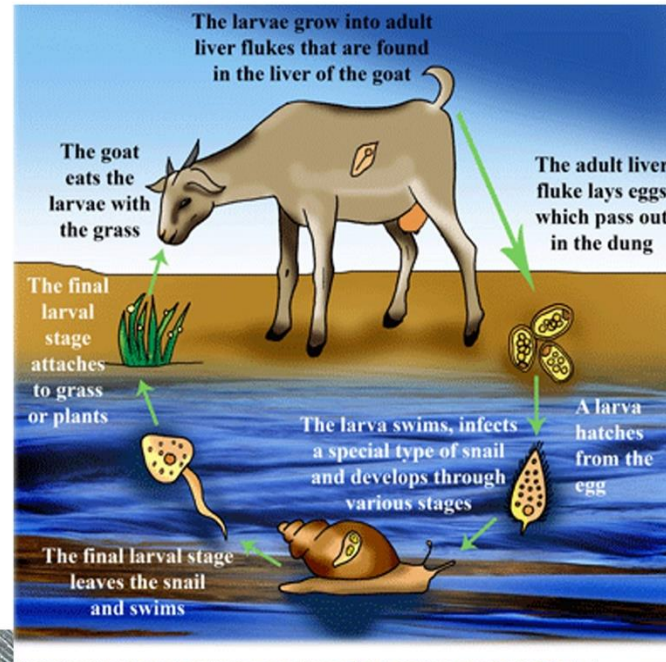
What causes it?

How can it be treated?

Can humans get tapeworm cysts? If so, how?

If humans get tapeworm cysts, how do you treat it?

Flukes



Flukes- Section 4.1.4

Have you ever seen these symptoms in your animals?

What flukes have we seen?

What are the symptoms?

What are some local controls or remedies?

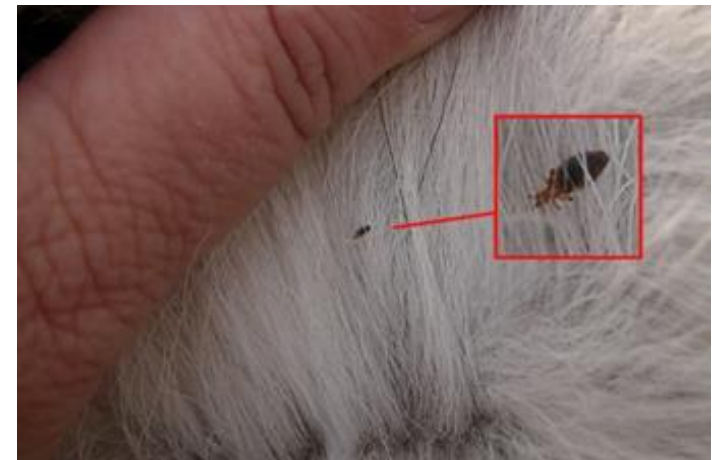
What do you use?

Do you drench or selectively treat?

Do you have seasons where its worse and better?

Where do flukes live and how are they spread?

External parasites



External parasites- Section 4.2

Which of these have you seen on your animals?

Which are these are the most problematic in your herd?

Which of these conditions or parasites do you recognise?

How common are they in your area?

What are some of the symptoms that you see for mange? For nasal bot?

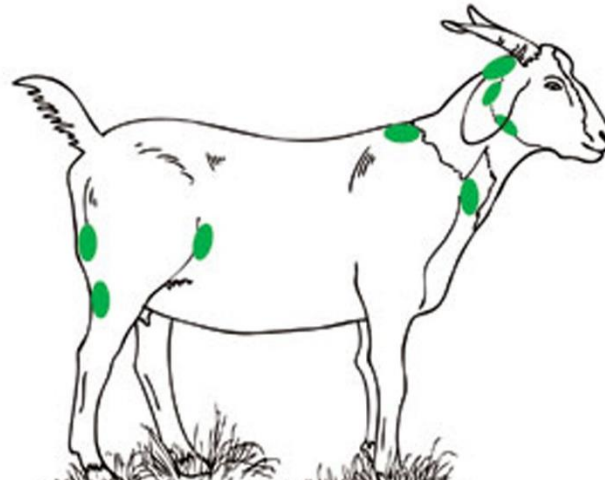
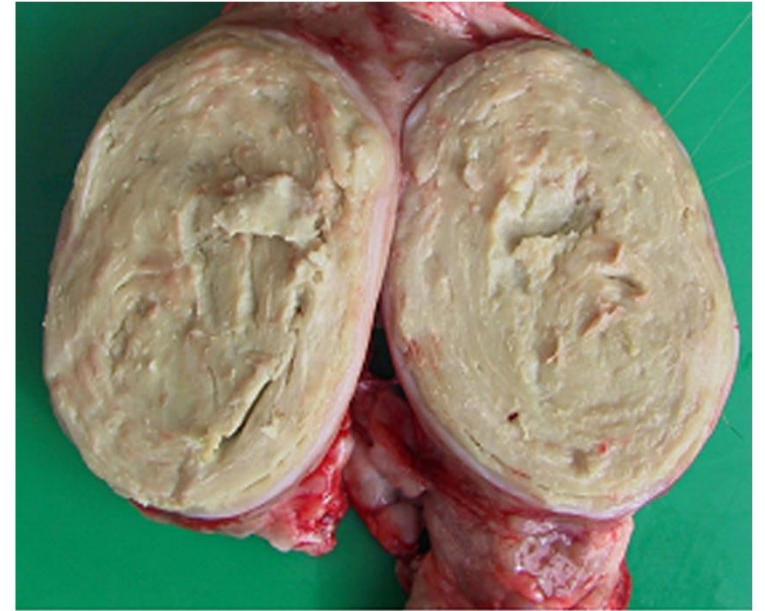
What time of the year do you see them?

What can be used to control them?

What can you do to manage them?

What can you do once you have an infestation?

Abscesses



Abscesses- Section 5.1

Have you seen these on your goats?

What are the symptoms?

What causes them?

How can they be prevented?

How can they be treated and when is the right time?

How do you prevent infecting more of your goats?

When you clean these abscesses what do you do with the pus?

Contagious eye infection



Contagious eye infection- Section 5.2

Do we see it in this area?

What are the symptoms?

What causes different types of eye infections?

At what time of the year do we see this?

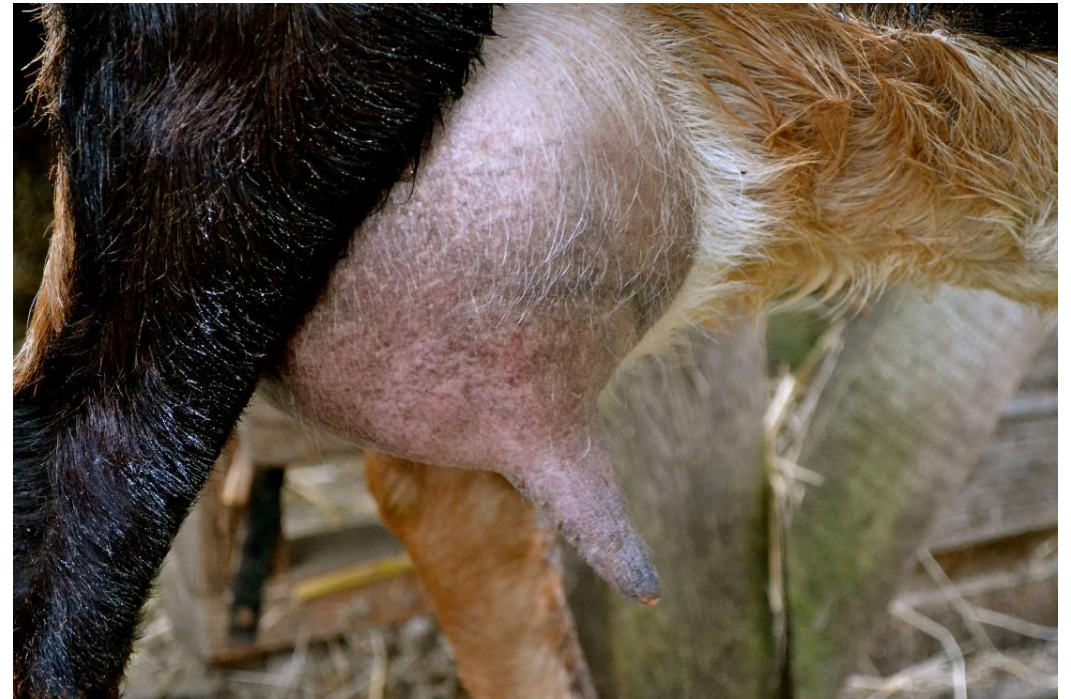
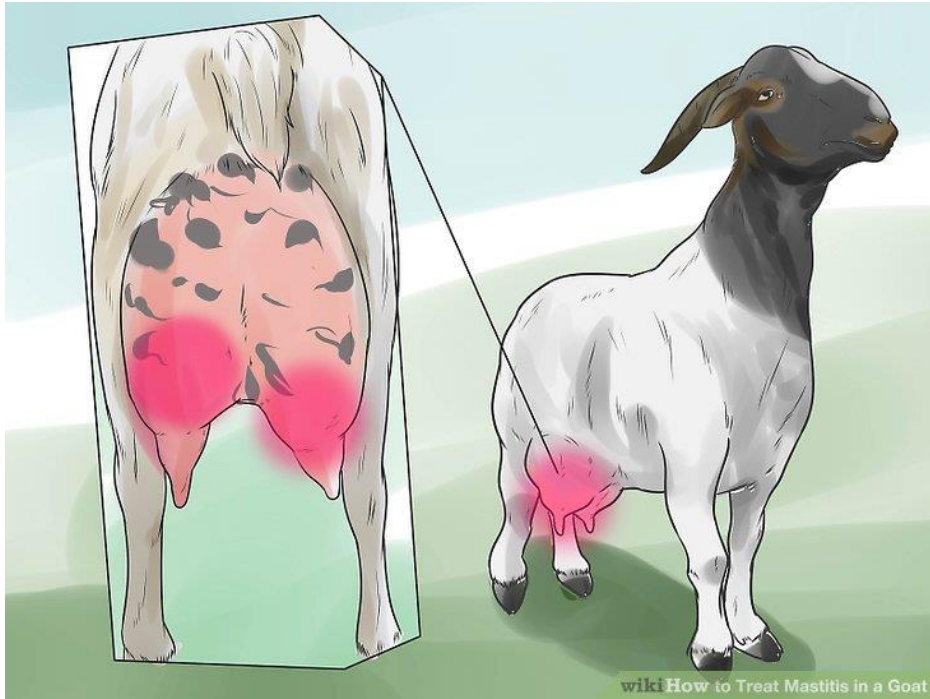
What are some local treatments?

How can it be prevented?

How can it be treated?

What spreads the eye infections between animals?

Mastitis



Mastitis- Section 5.3

Have you seen this condition before?

What eventually happens if left untreated?

What causes it?

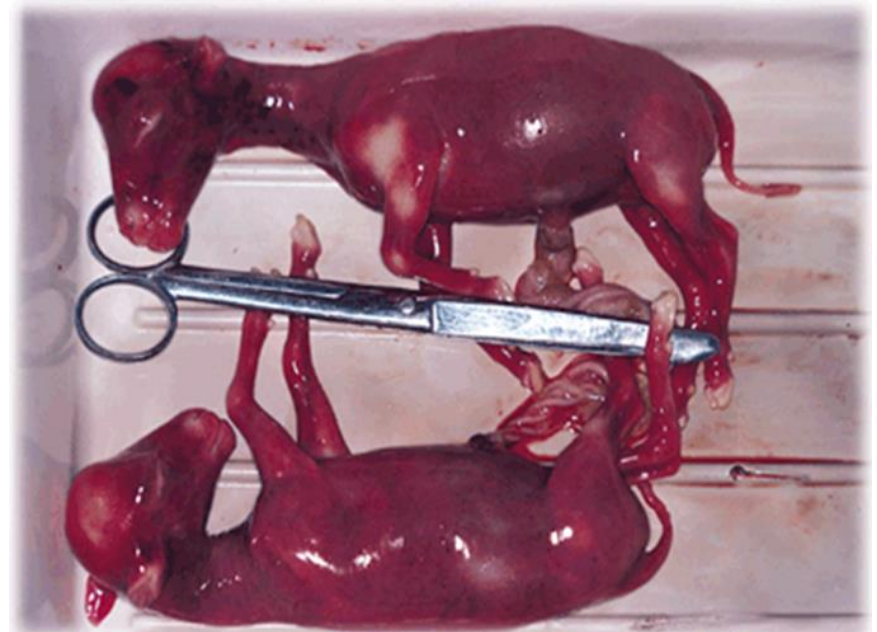
How do you check for it?

How can it be prevented?

How can it be treated?

How can it spread to other ewes in your herd?

Abortion



Abortion- Section 5.4

Do you see this happening in your herd?

When is it common?

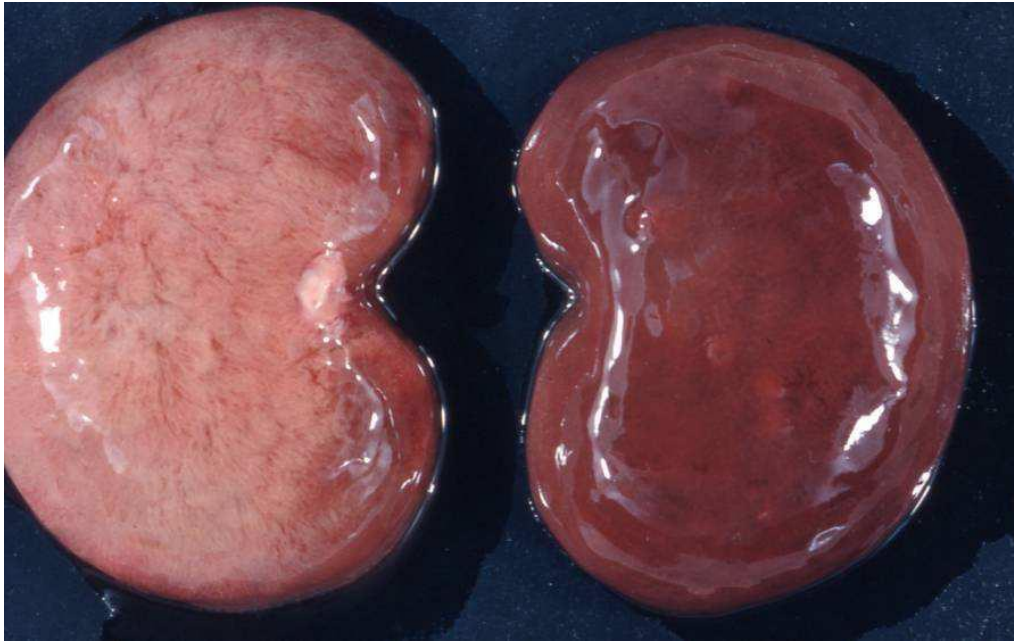
What causes it?

How can it be prevented?

How can it be treated?

WARNING-Malta Fever-This disease can also infect humans. The enzootic abortion virus is one of these. Use gloves when you handle aborted fetuses and placentas to avoid contact and contamination with the disease-causing organisms.

Eating disorders



Eating Disorders- Section 6.1- 6.3

Bloat, Pulpy Kidney and Scours

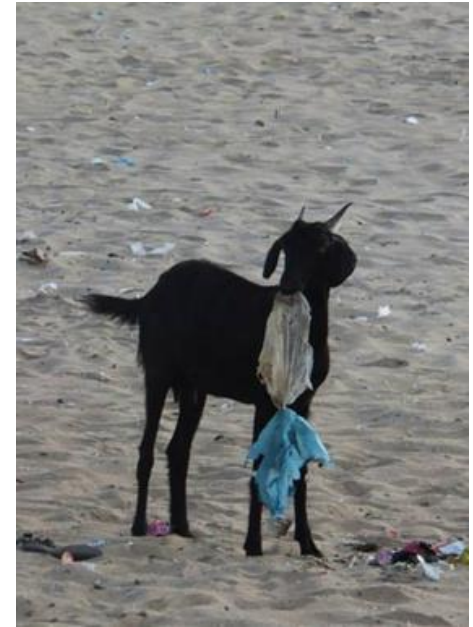
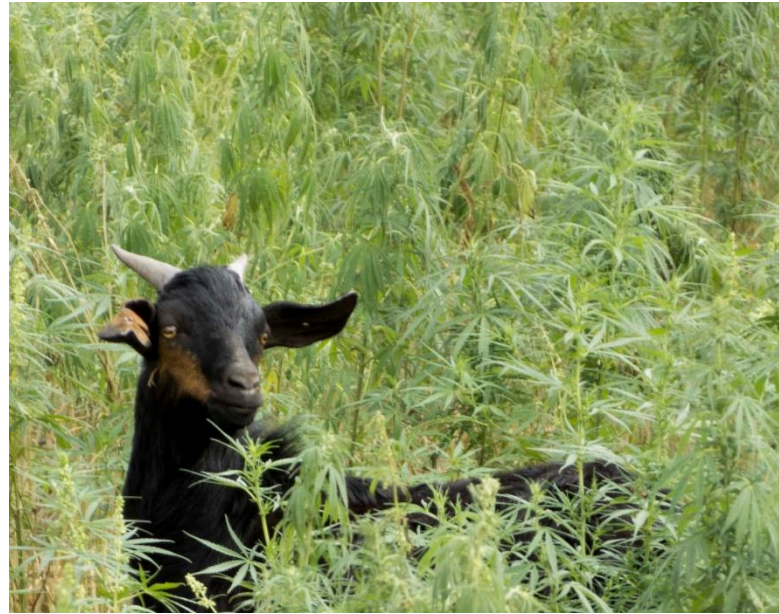
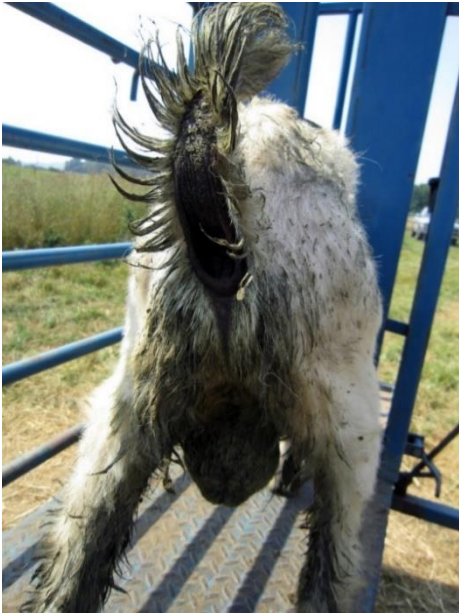
What disorders can be caused by eating too much, too little or a change in diet?

What are the symptoms of these disorders?

Can you identify the disorder by post-mortem inspection?

What would you do to manage this disorder if there is an outbreak?

Eating disorders- Cont.



Eating disorders- Cont.- Section 6.5 and 6.6

Have you seen these behaviours or symptoms in your animals?

Why do they do this?

How is this behaviour dangerous to your animals?

How can it be prevented?

If your animal consumes plastics, what can be done to treat it?

Do you have these plants in your area?

Are these plants indigenous or alien plants?

How do they affect your animals?

Hoof problems



Hoof problems- Section 6.7

What problems do goats have with their hooves?

What causes this problem?

How can they be managed?

What should you be careful of?

Can these conditions or problems be spread between goats?

[illegible]

Basic equipment and medicines- Section 7.1

List these items you see here?

What they are for?

Where do you buy these products?

How do you store these products?

What important information do you need to know from the box/bottle?

Storage and Cold Chains



Storage and cold chains- Section 7.2 and 7.3

Where do you find out about the different storage conditions for different types of medicines?

How do you know if it has not expired yet?

Why is a cold chain important?

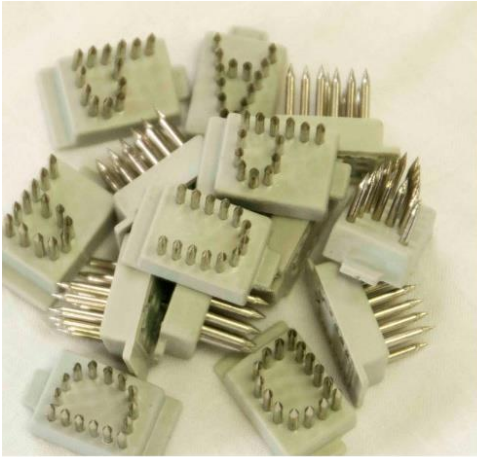
Which of these fridges can you not use for medicines?

Where's the warmest and coldest part of a fridge?

What can you carry in each of these – medicine or vaccines?

How long do each of these retain temperature?

Herd Identification



Herd Identification- 8.1 and 8.2

What do you need to do to have an animal identification certificate?

What are the implications of not having a state approved identification mark?

Can you use an ear tag or ear notch as a legal marking?

Does your dip tank have a mark and how would you use this?

Do you have a tattoo certificate?

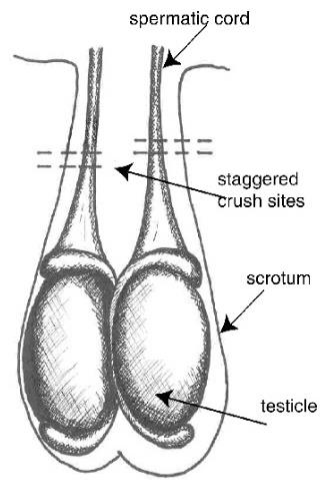
Why is it important to get your own tattoo symbols?

Where do you order your symbols?

Where do you put a tattoo?

Step by step discussion of tattooing process

Castration



Castration- Section 8.3

Why is it important to castrate?

What are the different ways to castrate and what are the advantages and disadvantages of each?

How do you decide which ones to castrate?

What are the differences do you expect to see between goats you have and haven't castrated?

How long should you monitor your animal after castrating?

How will you know the castration was successful?

At what age is it best to castrate?

Step by step instructions

Supplemental Kid Feeding



Supplemental Kid Feeding- Section 12.4

Do you have kid mortalities?

What time of the year do you most often see the most kid mortalities?

At what age do you see the kids dying?

What are these deaths being caused by?

Are there ways to prevent these deaths?

At what age can you introduce food to the kids?

What could you feed them that's grown locally?

What advantages would there be in them being about to come in and out of a shelter freely?

What the dangers and problems that you could see from keeping kids in a shelter?

What are the advantages of keeping kids in a shelter?

Forage growth, storage and supplements



Forage growth, storage and supplements

When are goats at their hungriest?

Which ones in the herd seem most affected and least affected?

What plant left overs in your area could be collected?

How and where would they need to be stored?

What is the benefit of providing supplements to your animals?

How would you process these supplements to make them more palatable?

What are the dangers in feeding supplements to your animals for the first time?

Dosage form

CAHW work sheet

CAHW name

Area of work

Date	Name of farmer	Identification of animal tattoo etc	Type and Weight of animal	Famaacha and temperature	Treatment or intervention type	Type of medicine used	Dosage used	Dosage cost	Total Charged to farmer	Cell phone of farmer	Farmer signature
Total											

IgamaleCAHW: _____ NGO/Govt official: _____

Dosage form

Why is it important to understand a dosage form?

Who plays which role when completing this form?

What checks and balances can be performed by analysing this form?

Why is it important to understand and maintain dosage forms?