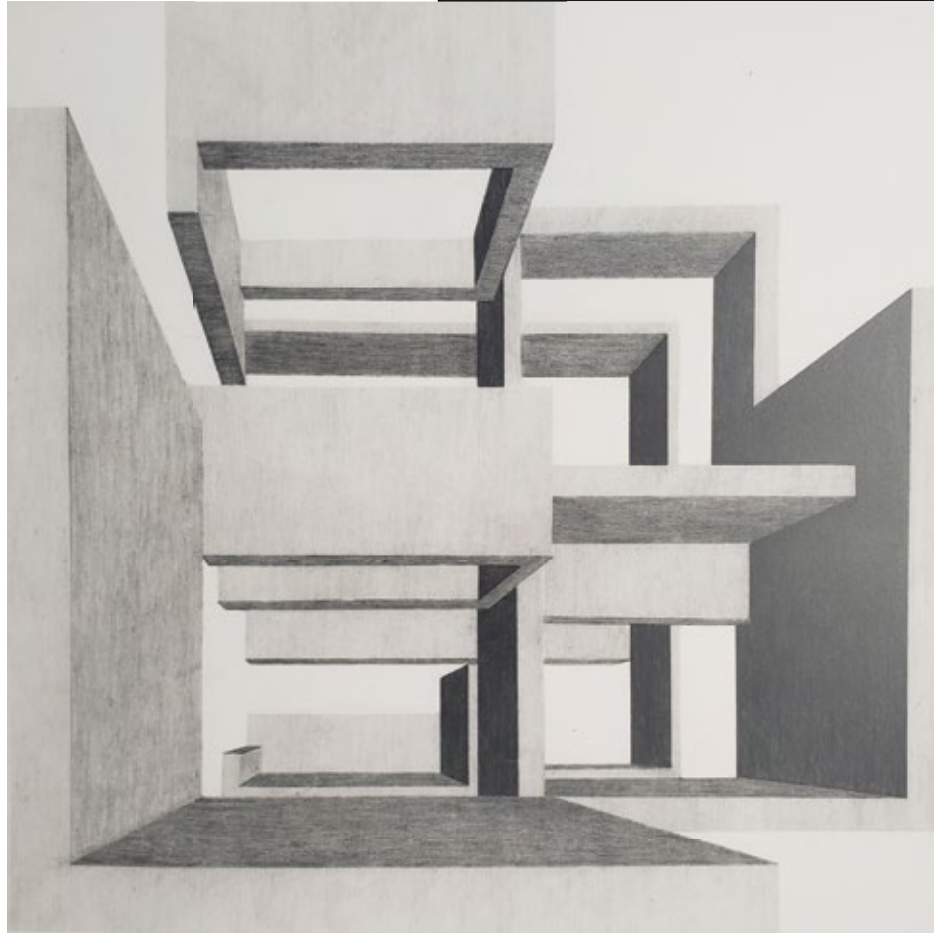




ATTALLA JOUDEH

P O R T F O L I O



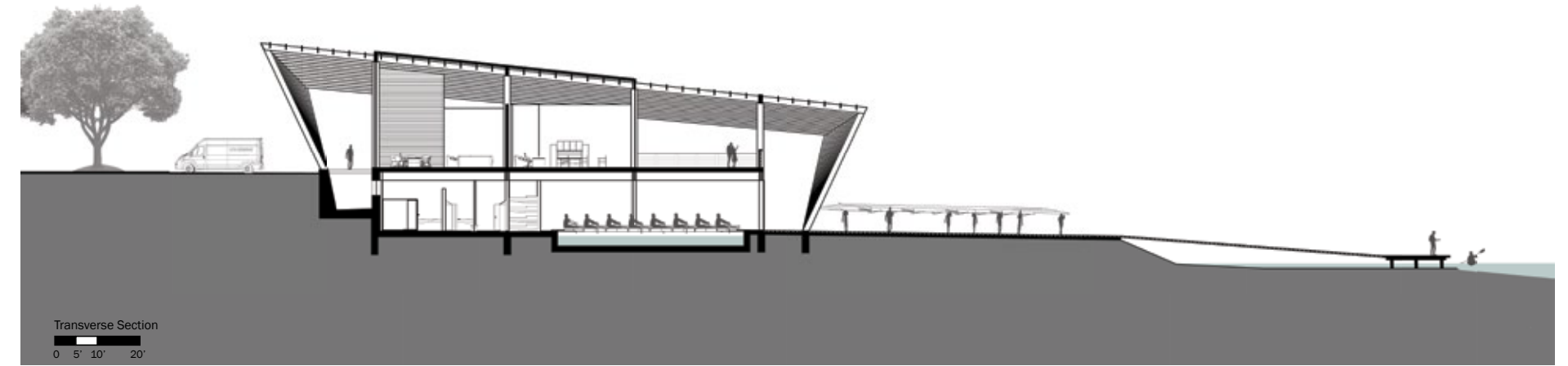
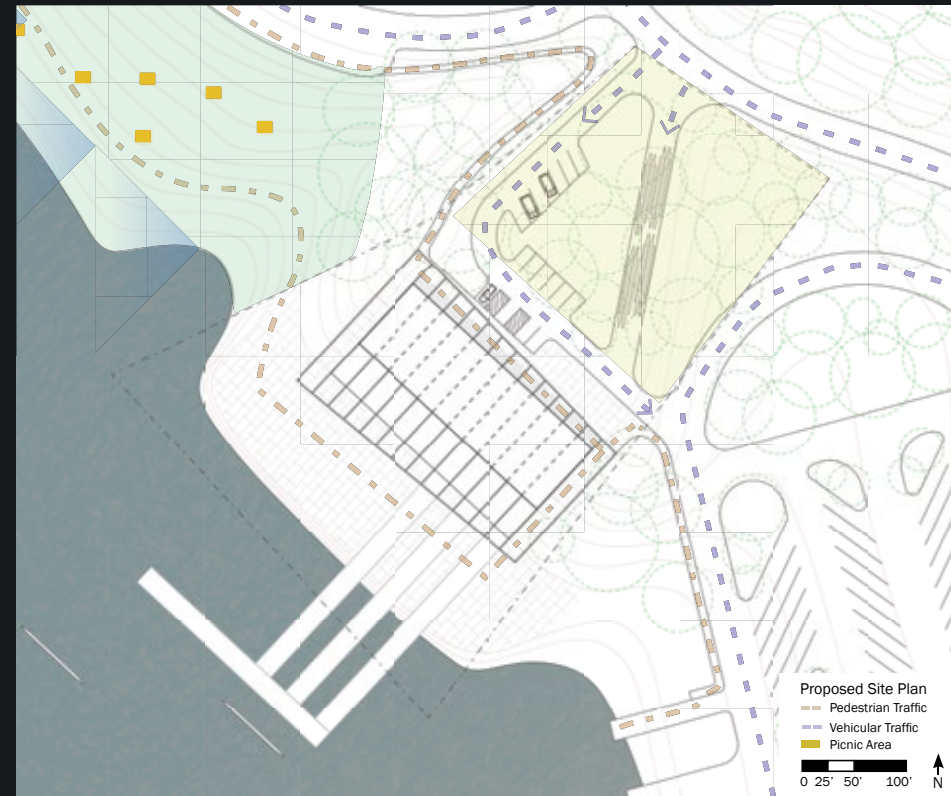
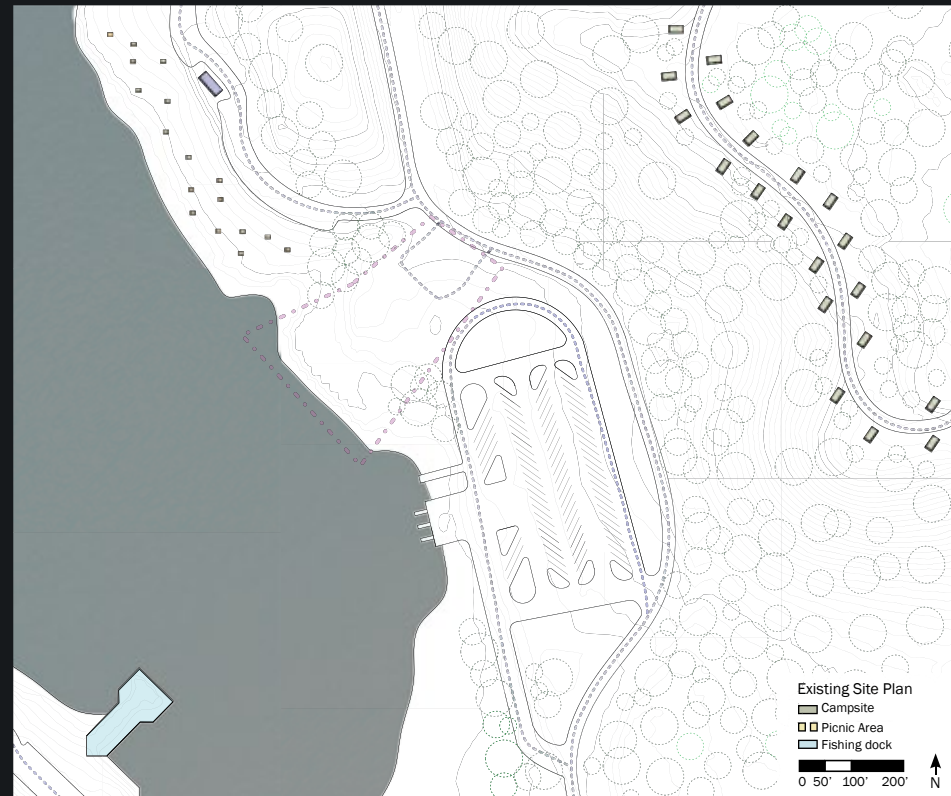
CONTENT

UTA ROWING BOATHOUSE	4 - 15
FRED ROUSE PAVILION	16 - 27
THE BRYAN HOTEL	28 - 39
I.G.R.I.T. STUDENT HOUSING	40 - 49

UTA ROWING BOATHOUSE

CEDAR HILL STATE PRESERVE
JOE POOL LAKE, TEXAS



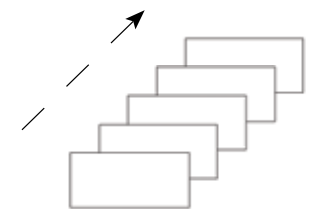


UTA ROWING BOATHOUSE -

The goal of this project is to design a Boathouse facility for the UTA Rowing Crew. The building is to function a modern athletic training facility housed in a Net-Zero-Energy building with minimal impact on its site and surroundings. Taking inspiration from the motion of rowing, the architectural goals of the project are to explore new formal and structural design strategies focusing on movement, synchronicity, and modularity in

Inspired by the motion created by the oar's movement over the water throughout one stroke. The movement of the oar to propel the shell forward creates repetitive horizontal planes with varying angles. This form gave rise to a canopy like exoskeleton structure with repetitive elements abstracting the oar's motion. The repetitiveness of these elements conveys the idea of motion and synchronicity while serving as the structural system.

Working with the site's natural topography, and in contextual conjunction with the other buildings in the park, such as the Penn Family historic buildings, brans, the park ranger office building at the entrance to the park, the building is split into two levels with the second level negotiating the downward-sloping terrain of the site allowing the building to maintain the desired low-profile while accommodating the needs of the program.



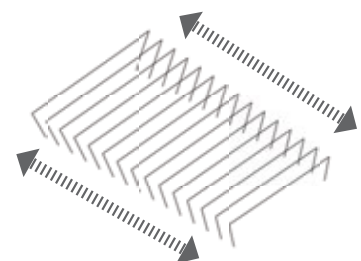
Movement of the oar in the water



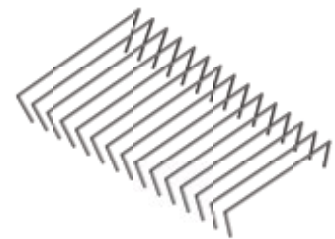
Breakdown each frame and rotate



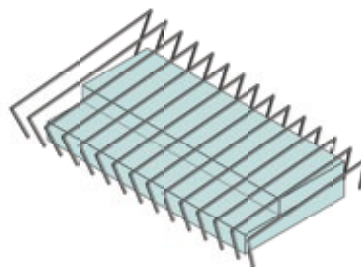
Repeat while changing rotation angle and lift up



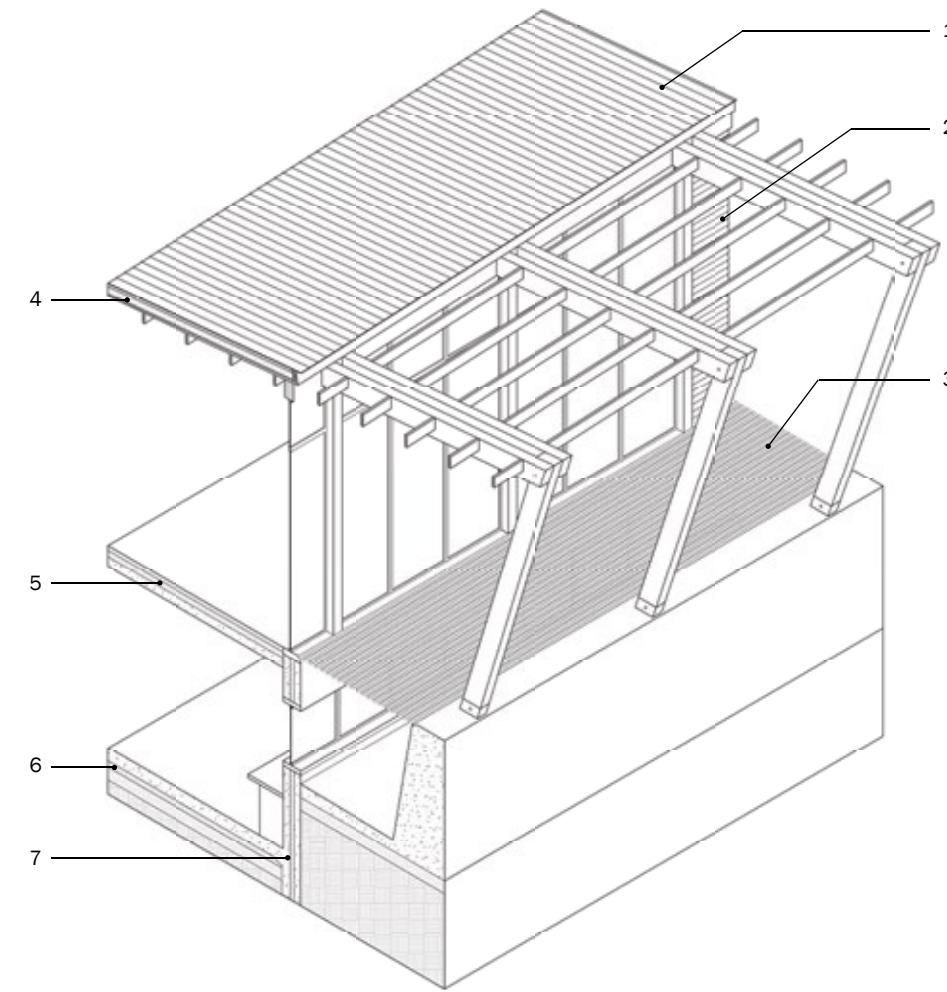
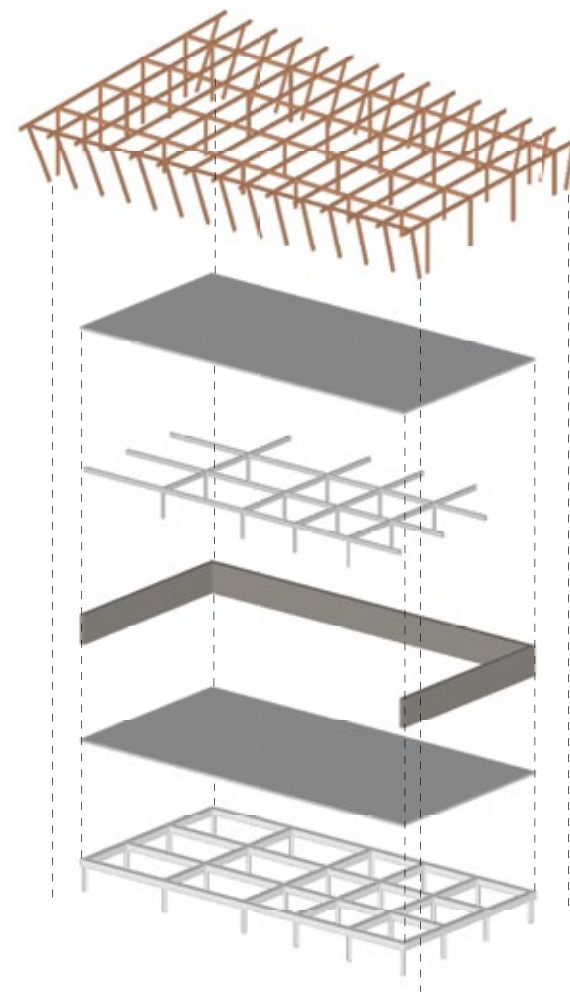
Stretch the frames to create space



Convert the frames to structure



Place frame over building mass

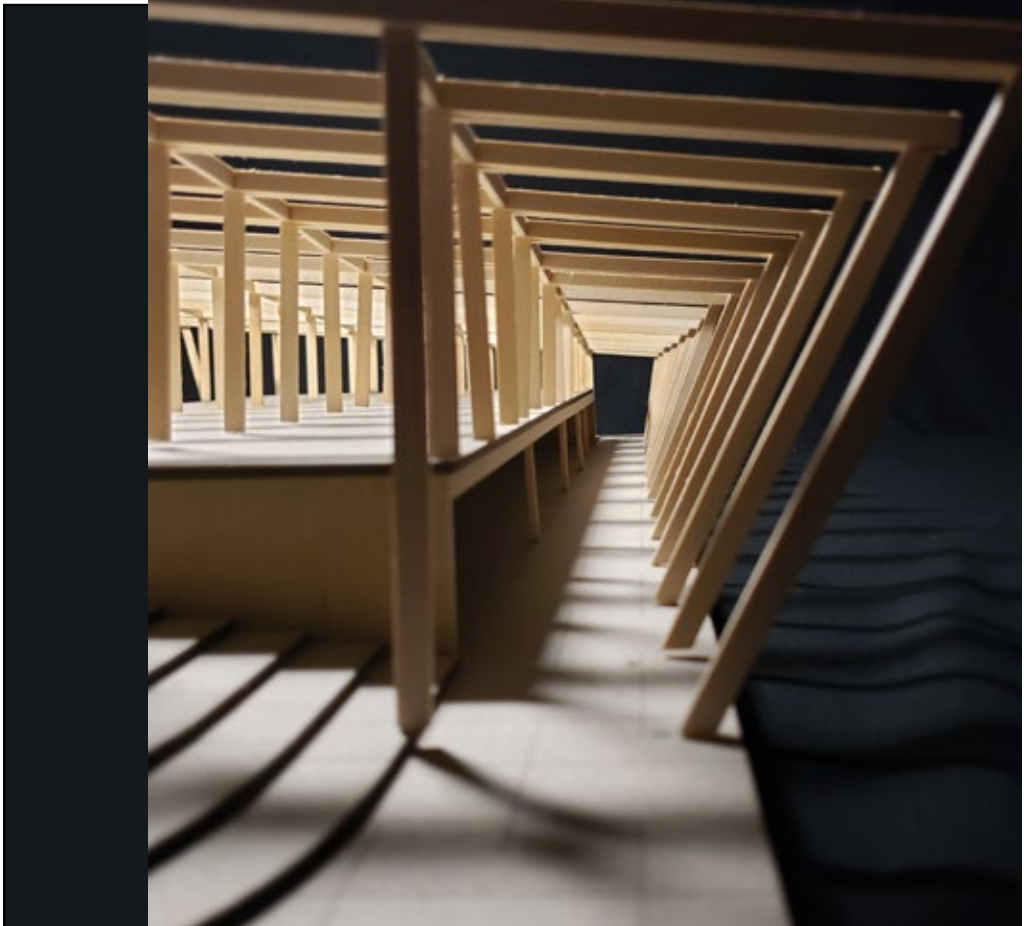
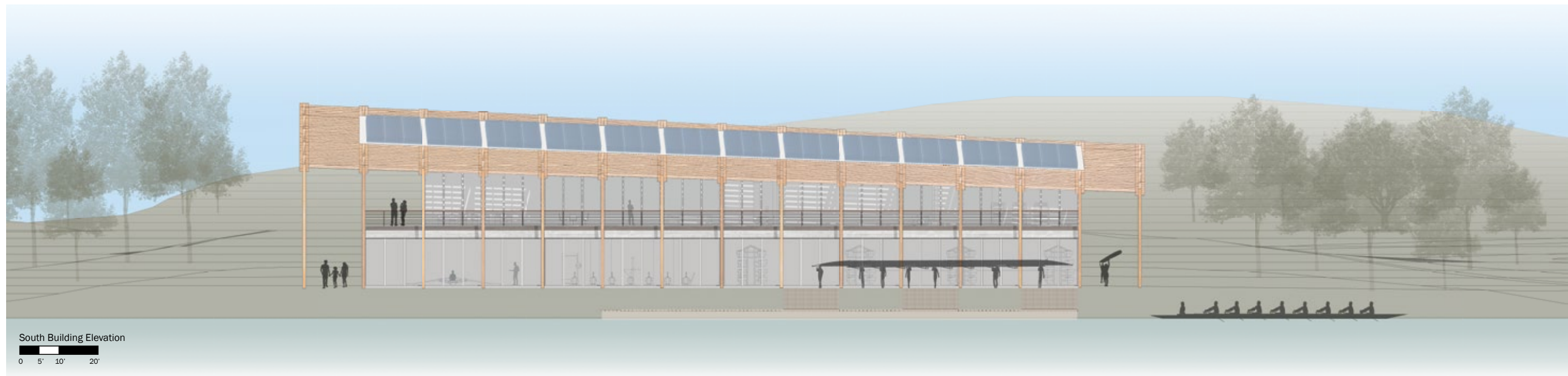
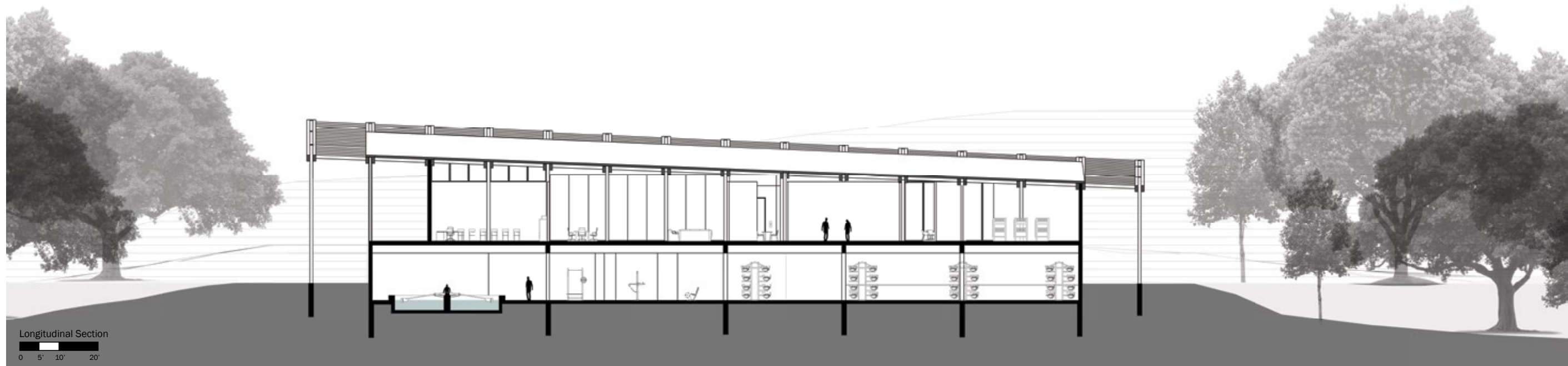


1. Standing-seam metal roof panels
2. Treated exterior wood siding boards
3. Perforated metal grid
4. Insulated SIP roofing panels
5. Rigid flooring insulation
6. Continuous insulation
7. Rigid insulation inside wall cavity

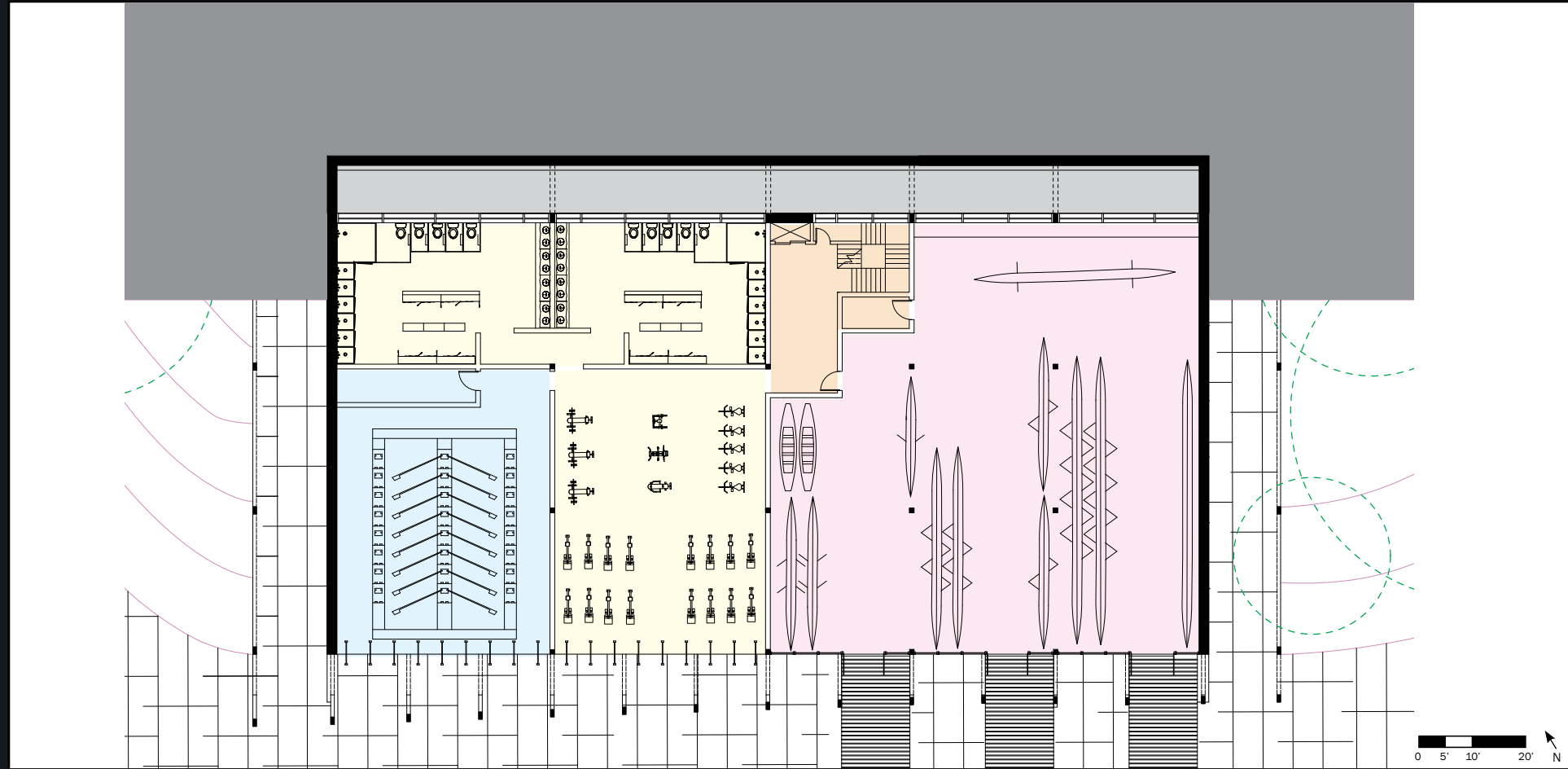
The structural glulam wood exoskeleton encloses the second floor of the building. Along with the concrete columns and beams structure of the first floor, the masonry retaining wall, the grade beams and concrete piers, and the concrete slab floor mitigate the risk of any damage from floods or rising water levels while providing passive thermal mass heating and cooling.



Structural Framing Model 1/8" = 1'
Balsa wood, chip board, plywood, mdf



During the drive phase, the oar's blade is nearly stationary but the most amount of inertia is generated to propel the boat on the water. This phase of the motion of the oar's blade in the water inspires the development of an architectural ordering system abstracting the repetitive movement and synchronicity of the sport of rowing.



Lower Level



Upper Level

Rowing Tank Room: (2,000 sf)

Description: training room
 Function: indoor water rowing exercise
 Adjacencies: locker rooms, training roomv
 Notes: requires water pump and equipment room

Entry / Lobby / Gallery: (800 sf)

Description: building entrance
 Function: reception area, gatherings, display
 Adjacencies: social space, classroom, admin offices
 Notes: seating, reception desk, display cases

Bunk Room: (700 sf)

Description: shared dormitory
 Function: a place to sleep for 10 people
 Adjacencies: kitchennette, social areas, services.
 Notes: bunk beds, small storage, daylighting

Boat and Shell Storage: (8,000 sf)

Description: large space to house to store the boats
 Function: storage of the boats
 Adjacencies: boat launch, dropoff area.
 Notes: has storage racks and a repair workshop

Exercise Room/Locker Rooms: (6,000 sf)

Description: exercise room and locker rooms
 Function: training, showering, erg machines room.
 Adjacencies: locker rooms, tank room.
 Notes: requires larger doors for moving equipment

Classroom: (600 sf)

Description: Classroom for 20 students
 Function: classroom for lectures and watching film
 Adjacencies: Lobby, admin offices, social spaces
 Notes: required daylighting, student desks

Social Spaces: (800 sf)

Description: assembly spaces
 Function: gatherings, dining, socializing, etc..
 Adjacencies: services, lockerrooms, lobby
 Notes: seating, TV, entertainment, bookshelf

Admin offices: (600 sf)

Description: shared offices for admin staff/coaches
 Function: offices, business functions
 Adjacencies: locker rooms, exerciser rooms, lobby
 Notes: open, semi-private spaces, office furniture

Circulation and Mechanical: (400 sf)

Description: mechanical room, stairs, elevator.
 Function: services, connection, egress.
 Adjacencies: locker rooms, tank room, storage.
 Notes: code and fire safety requirements.

Services: (500 sf)

Description: small kitchen, laundry room, restroom
 Function: shared accommodations
 Adjacencies: social spaces, lobby, admin offices
 Notes: kitechen equipment, laundry equipment

Outdoor Terrace: (4,000 sf)

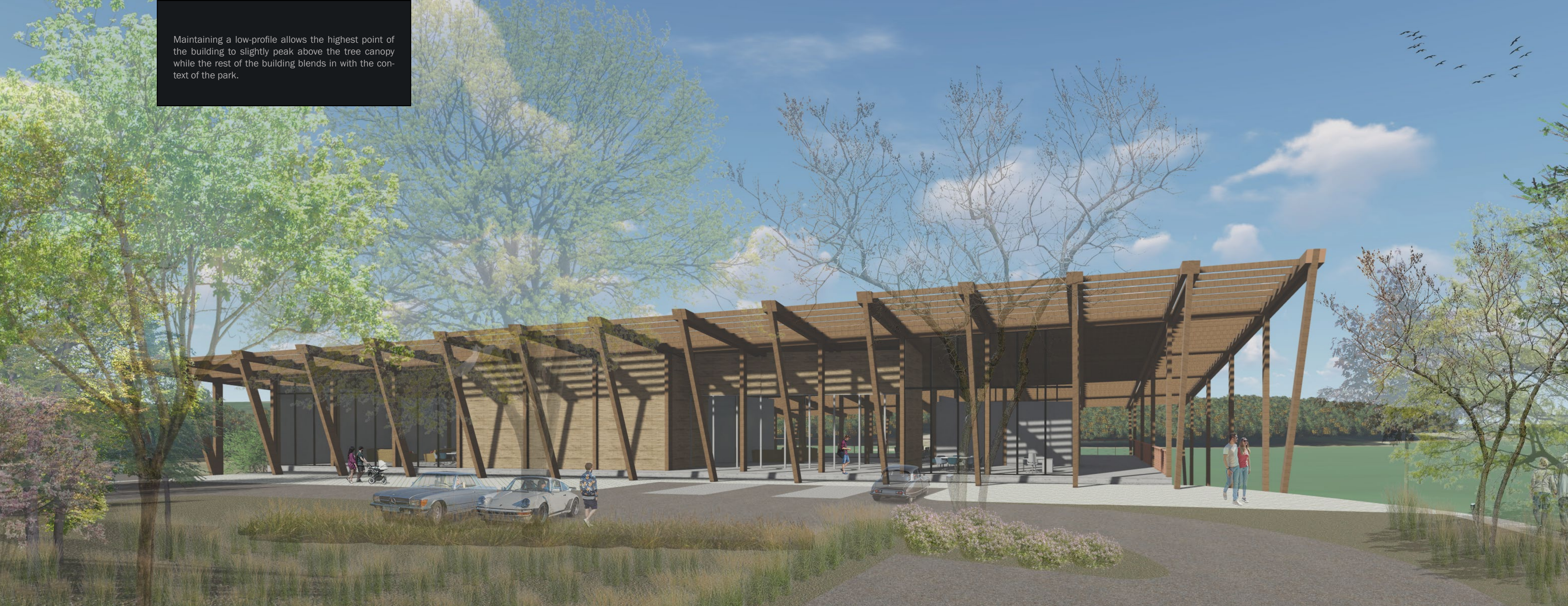
Description: shaded outdoor patio with lake view
 Function: an elevated platform to watch the races
 Adjacencies: toilet room, services, lobby, social spaces
 Notes: sun shading required, seating

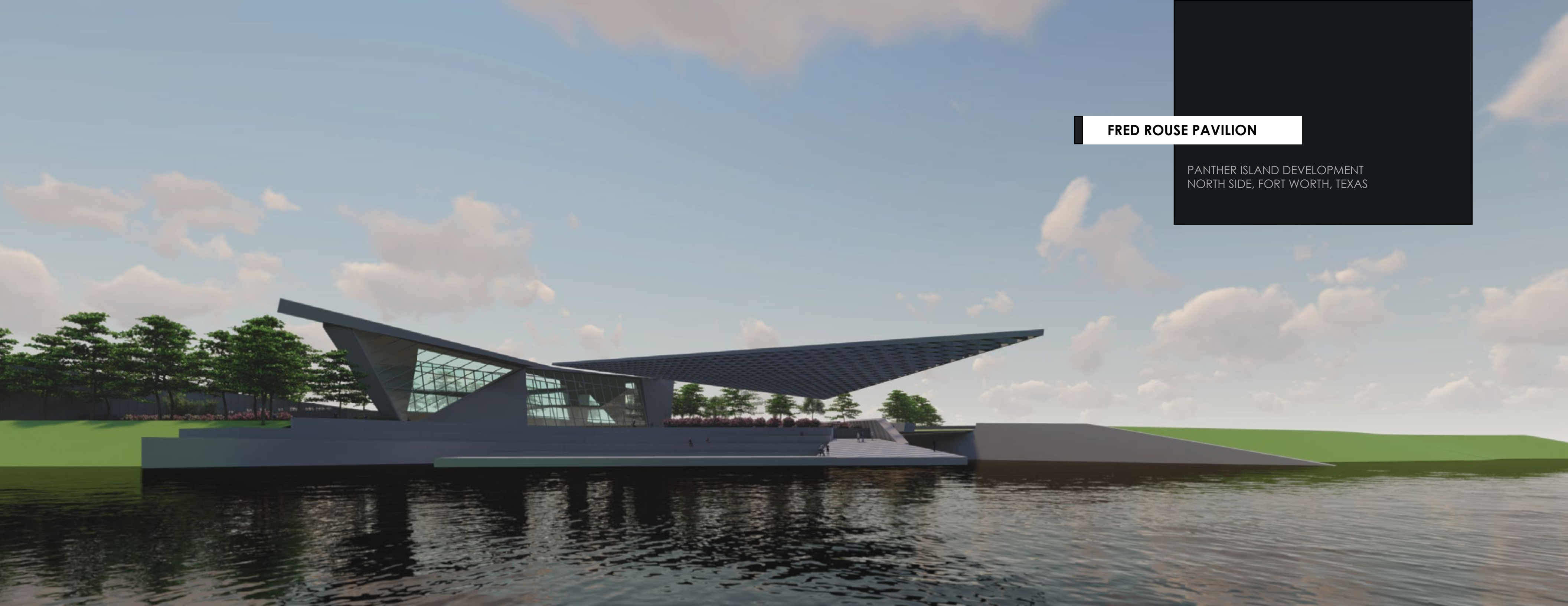
Air-Conditioned Area: 14,500 sf

Non-Air-Conditioned Area: 8,500 sf

TOTAL AREA = 23,000 sf

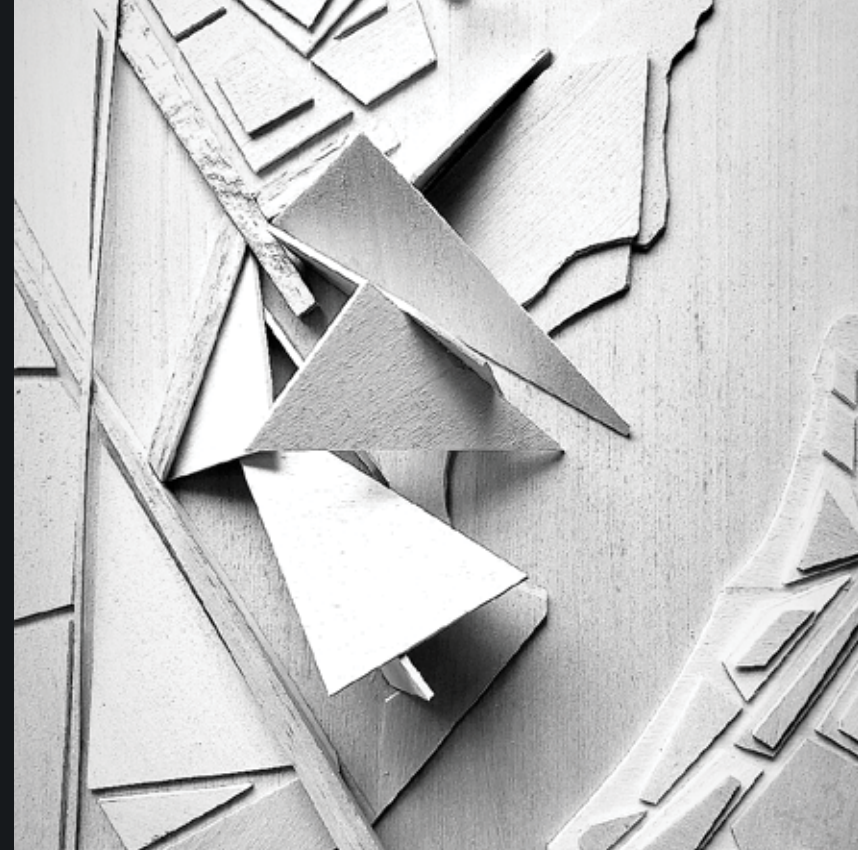
Maintaining a low-profile allows the highest point of the building to slightly peak above the tree canopy while the rest of the building blends in with the context of the park.





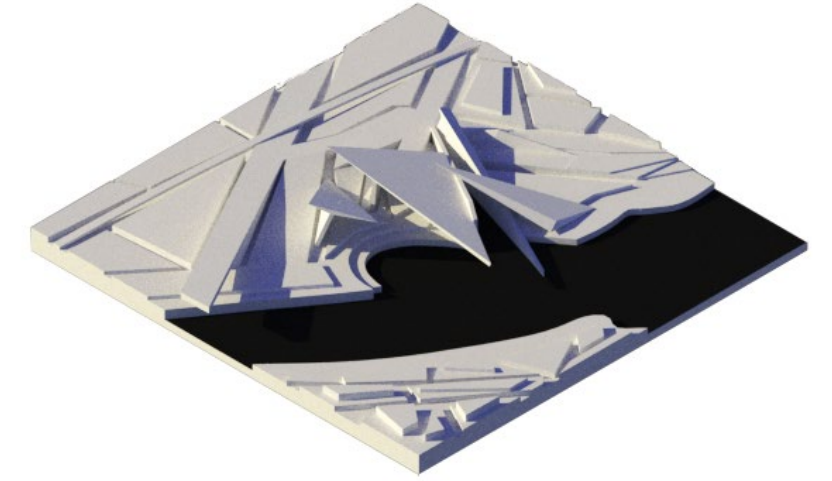
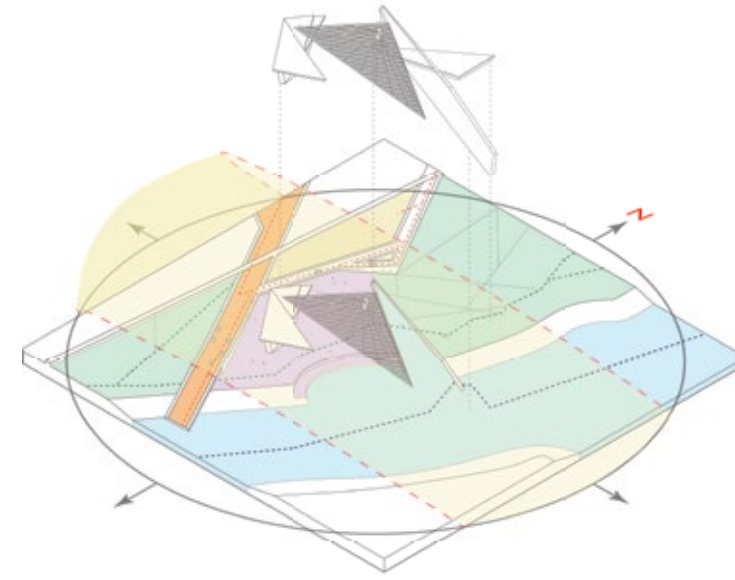
FRED ROUSE PAVILION

PANTHER ISLAND DEVELOPMENT
NORTH SIDE, FORT WORTH, TEXAS



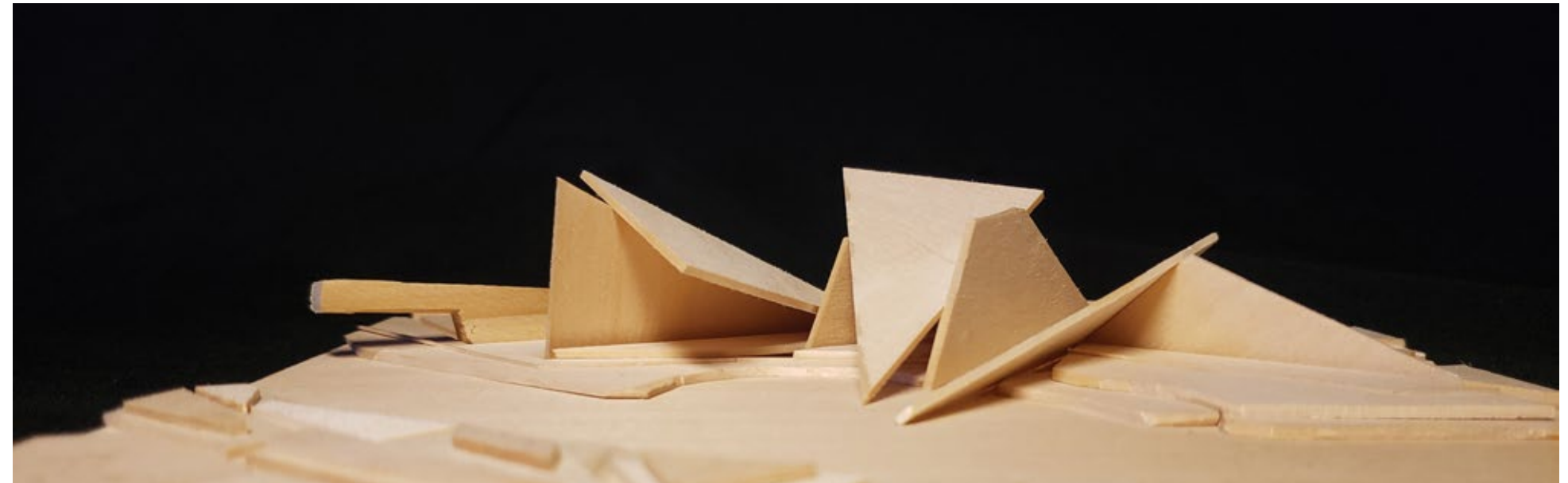
LAND. GROUND. DATUM. - Urban landscapes are rapidly expanding around the world. Our cities are growing, and as a major consequence of this urbanization process is the loss and fragmentation of land. Land which defines communities, habitats, and ecological systems. In this process, more and more people are alienated from participating in making decisions that impact the nature of their cities and their future, thereby weakening the alternate political movements and popularization of just and democratic policies and practices.

In direct response to the Panther Island private commercial development in Fort Worth, TX, this project proposes the re-creation of Fredrick Douglas Parks and the Justice Museum and Cultural Center. The piercing design fore-plays monumentality as both a counteraction and an attraction connecting both sides of the canal. This project aims to serve as a symbolic reminder of how fragments put together might not form a perfect shape but can still create a new space for society to enjoy and make memories, build a better future, and remember the past.



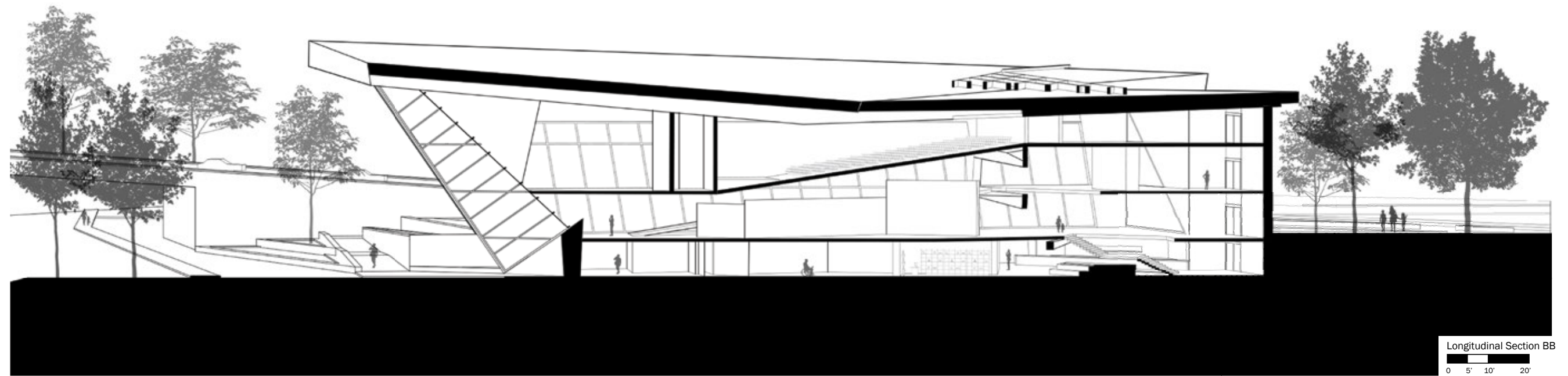
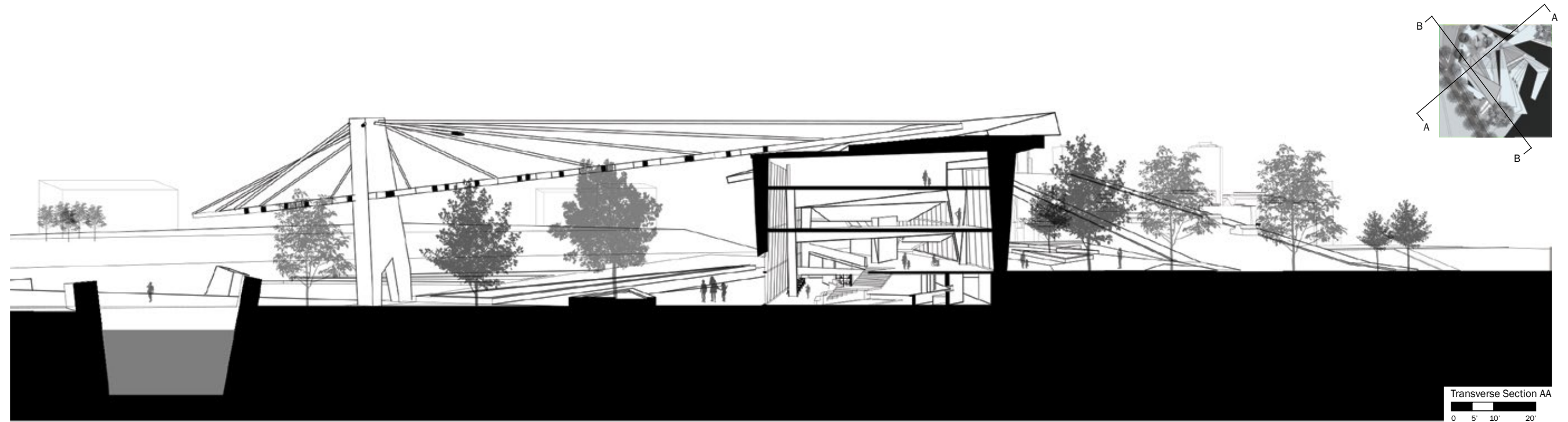
Analysis of the site revealed opportunities to situate the museum on Main St, connect the existing park to the new proposed Fredrick Douglas Park, and incorporate the canal into the design. Dropping the fragments from the low relief model onto the site creating an architectural ordering system for the project. Cutting into the canal and bringing the water into the project as a symbol for healing and connection.

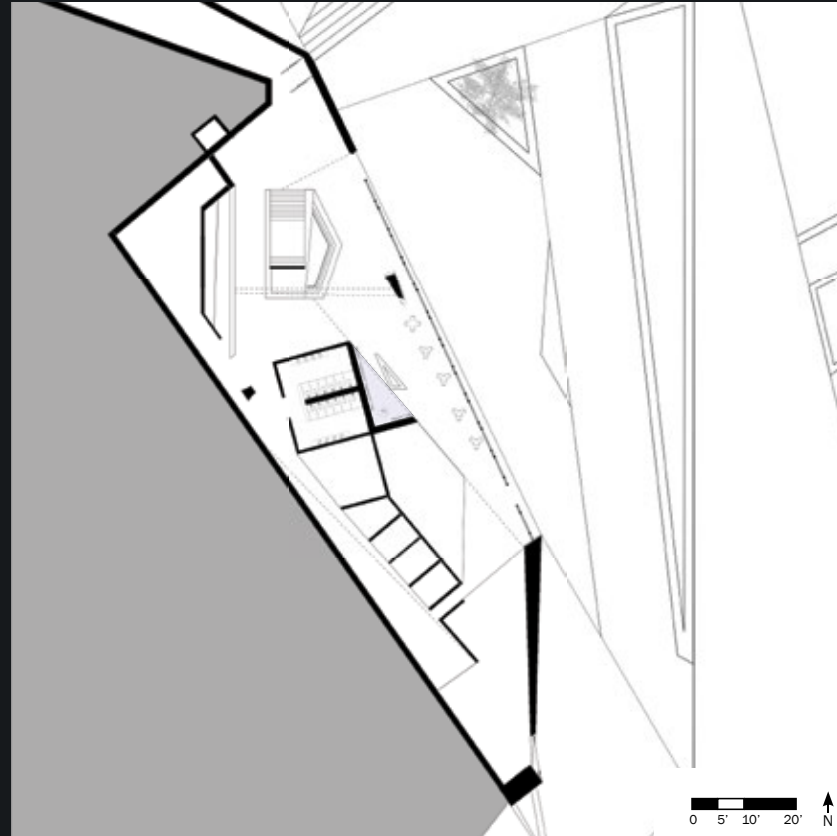
Memory. Identity. Culture. Land is being divided and separated without bloodshed. A prime example of this is the zoning ordinances, gerrymandering, redlining, political, and economical borders. This project aims to expose the ground, the earth, the soil, with the tension created by the collision of the fragments of concrete to create spaces for the museum, and memorial.



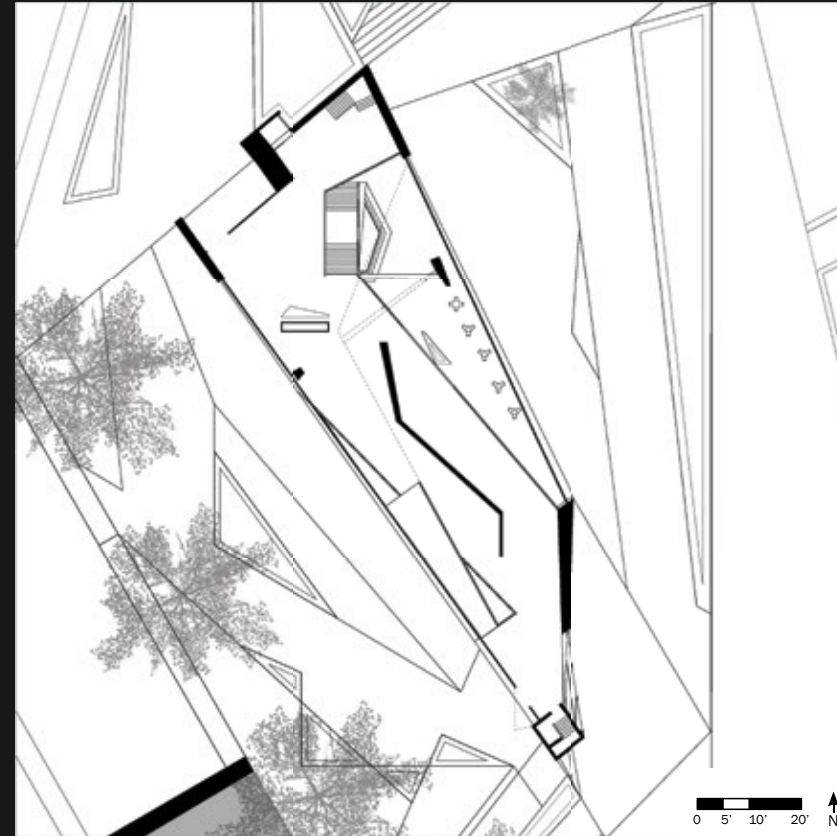


The bypass channel is creating a physical barrier between the North Side neighborhood and the new Panther Island Development. The project will negotiate this physical separation by creating a social gathering space, a museum, a memorial, and a park that is attractive to people from both sides of the channels to come together, recreate, and socialize. . The project considers the height and scale, views, materials, and people living and working in the North Side, the people driving by, and people visiting and living on the new panther island development.

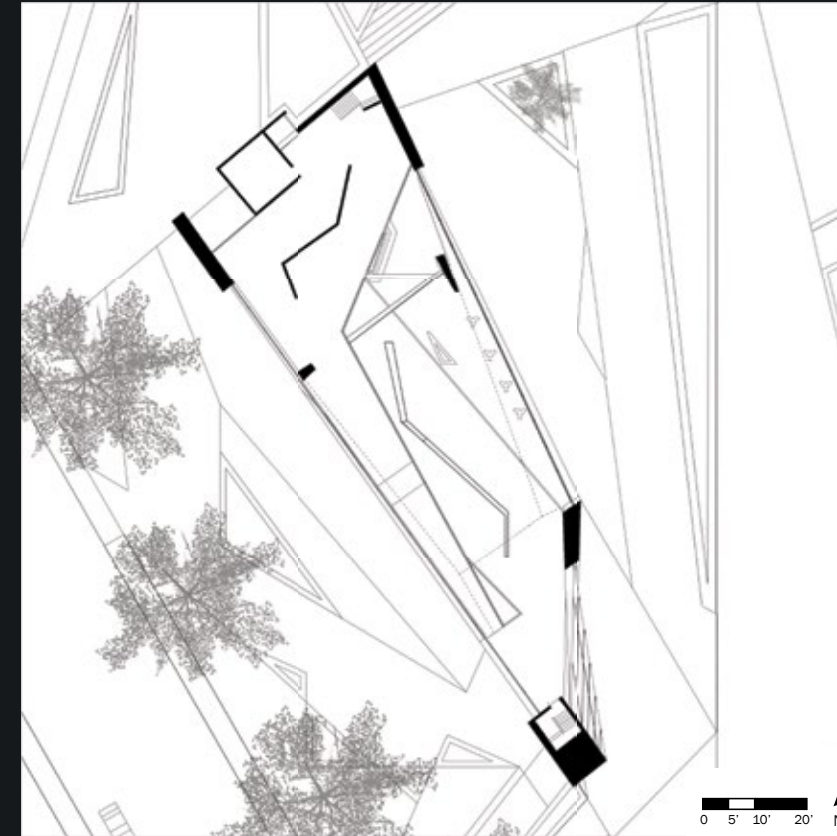




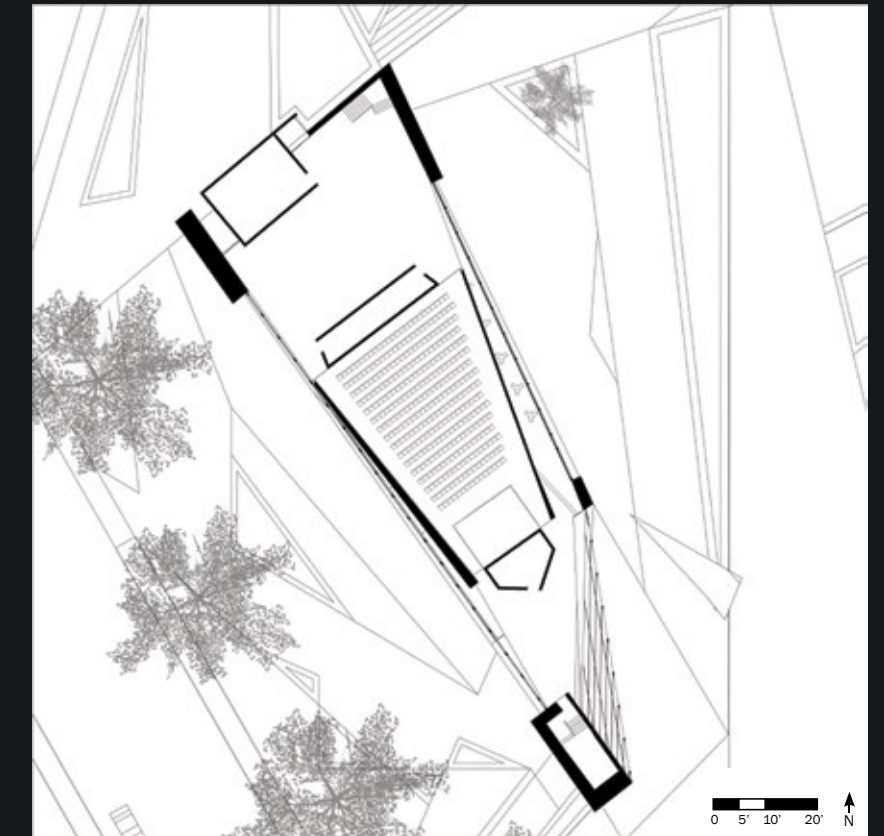
First Level



Second Level



Third Level



Fourth Level

Outdoor Terrace: (10,000 sf)

Description: outdoor event space
 Function: outdoor events, gatherings
 Adjacencies: park, entry / lobby
 Notes: requires shading, outdoor seating

Entry / Lobby: (1800 sf)

Description: building entrance
 Function: reception area, gatherings, display
 Adjacencies: social space, classroom, admin offices
 Notes: seating, reception desk, display cases

Cafe / Gift Shop: (1,000 sf)

Description: gift shop and snack bar
 Function: sell merchandise and snacks to guests
 Adjacencies: kitchennette, social areas, services.
 Notes: small storage, daylighting

Museum Library: (2,000 sf)

Description: assembly spaces
 Function: gatherings, dinning, socializing, etc..
 Adjacencies: services, lockerrooms, lobby
 Notes: seating, TV, entertainment, bookshelf

Circulation and Mechanical: (2,500 sf)

Description: mechanical room, stairs, elevator.
 Function: services, connection, egress.
 Adjacencies: lobby, event space, auditorium
 Notes: code and fire safety requirements.

Auditorium: (4,000 sf)

Description: space for presentation and lectures
 Function: space for presentation and lectures
 Adjacencies: toilet room, services, lobby, social spaces
 Notes: sun shading required, seating

Admin Offices: (800 sf)

Description: shared offices for admin staff
 Function: offices, business functions
 Adjacencies: lobby, entry, event spaces, library
 Notes: semi-private spaces, office furniture

Coat Check: (200 sf)

Description: coat / bag check service
 Function: check in of coats and storage of bags
 Adjacencies: entry / lobby, library, event space
 Notes: requires space to store coats and bags

Classroom: (750 sf)

Description: Classroom for 20 students
 Function: classroom for lectures and watching film
 Adjacencies: Lobby, admin offices, social spaces
 Notes: required presentation screen, student desks

Gallery and Event Space: (20,000 sf)

Description: display of art, gatherings for events
 Function: gatherings, dinning, socializing, etc..
 Adjacencies: coat check, lobby, services
 Notes: removable seating, entertainment space

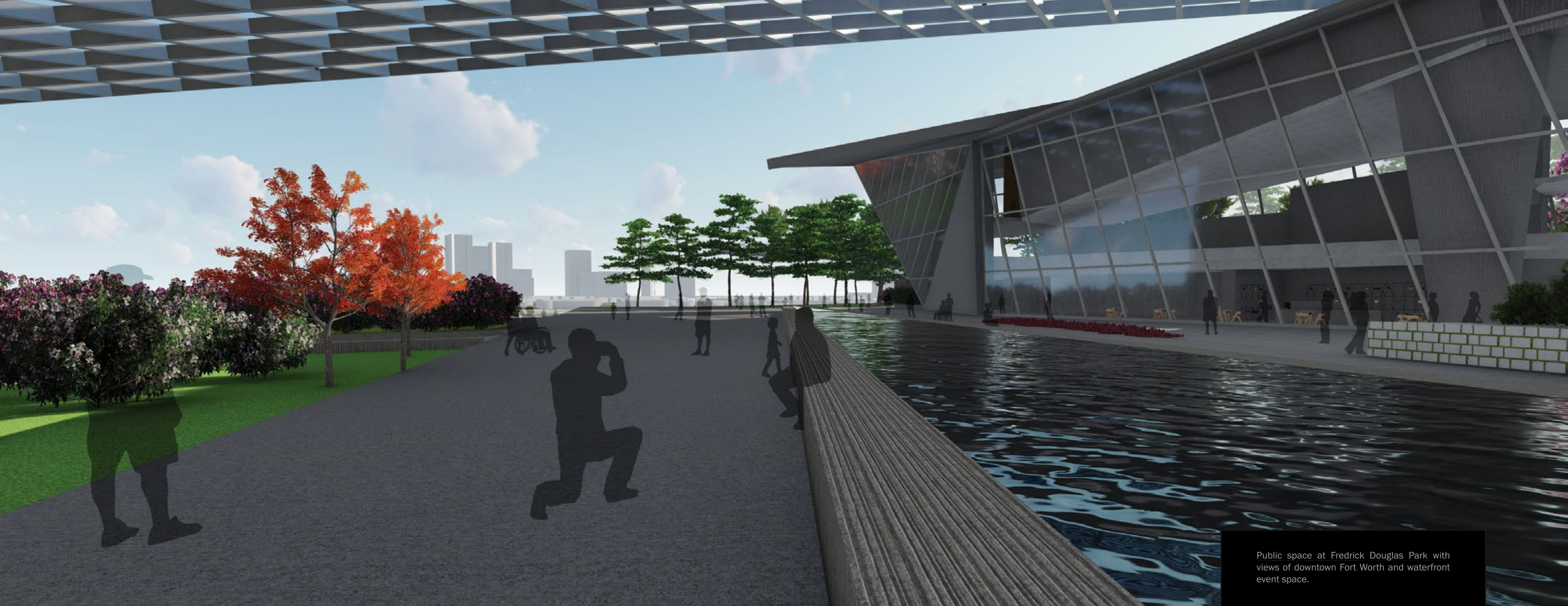
Services: (1,500 sf)

Description: storage, restrooms
 Function: shared accommodations
 Adjacencies: social spaces, lobby, admin offices
 Notes: requires shelving for storage

Air-Conditioned Area: 34,550 sf

Non-Air-Conditioned Area: 10,000 sf

TOTAL AREA = 44,550 sf



Public space at Fredrick Douglas Park with views of downtown Fort Worth and waterfront event space.

A monument from The National Memorial for Peace and Justice for Mr. Fred Rouse has a dedicated memorial for public viewing and remembrance.



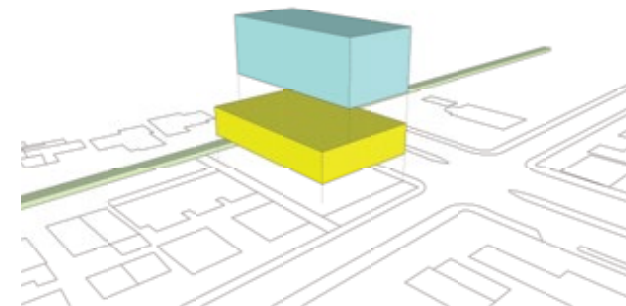
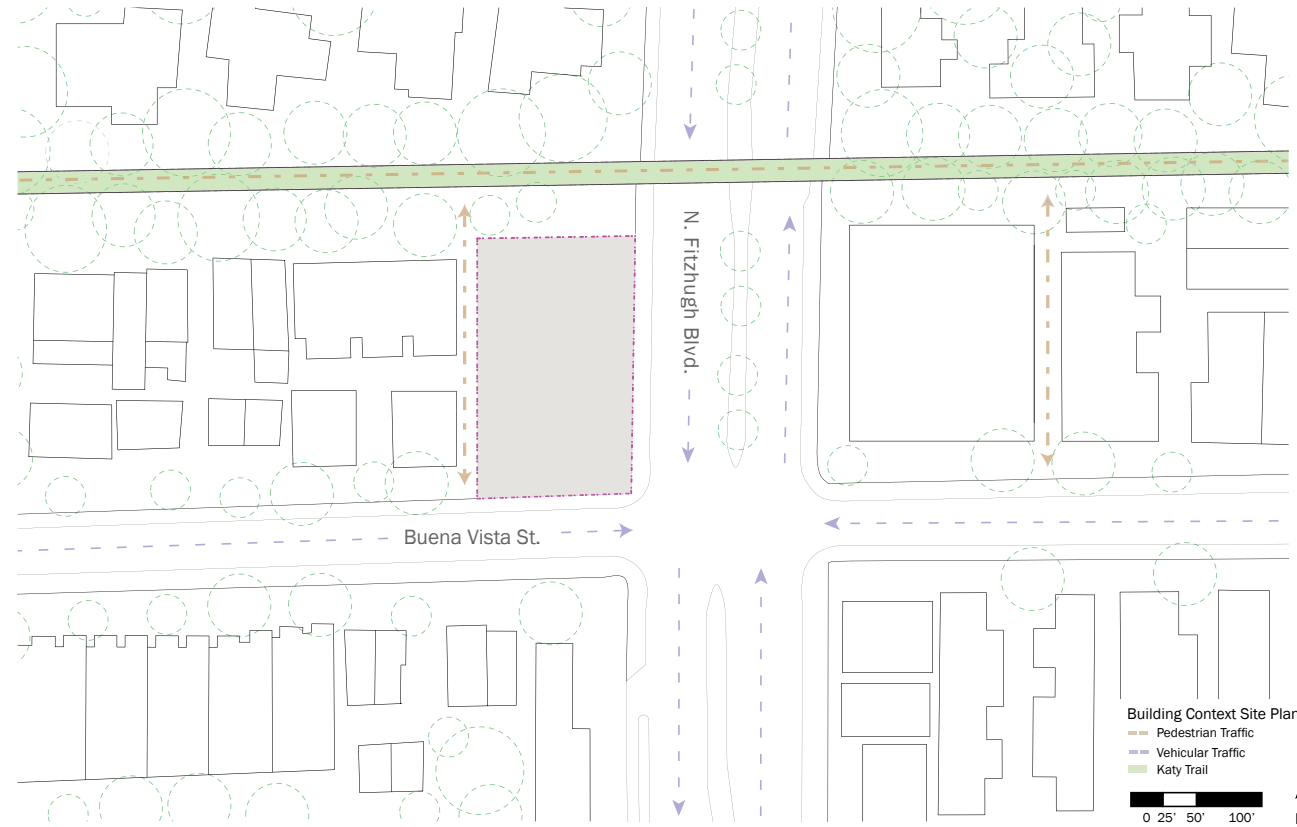


THE BRYAN HOTEL

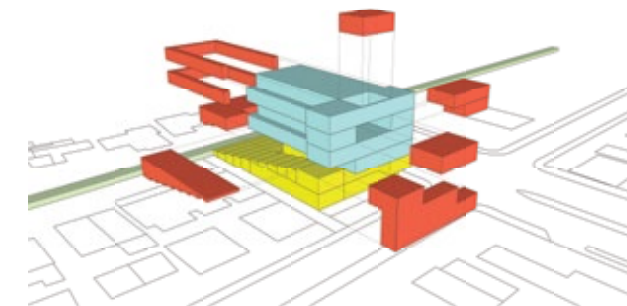
NORTH FITZHUGH BOULEVARD
KATY TRAIL, DALLAS, TEXAS



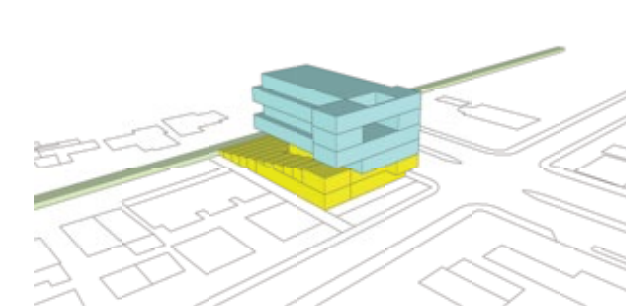
Site context model, 1":50', 3d print, xboard, mdf



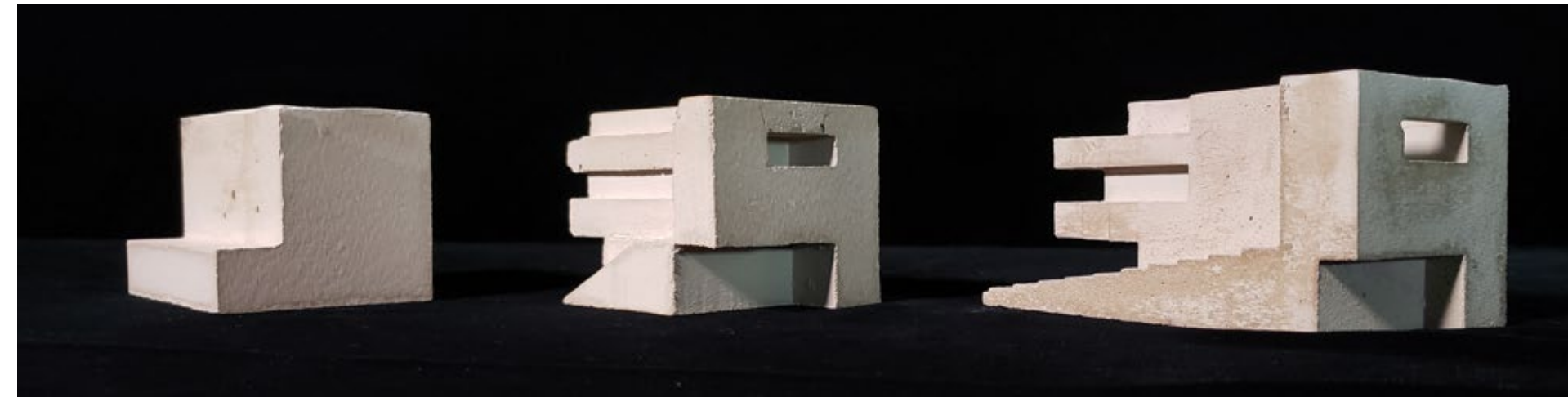
Shift massing to the roadside



Carve from massing based on site and program



Connect public and private space



Building massing model, 1":50', cast concrete

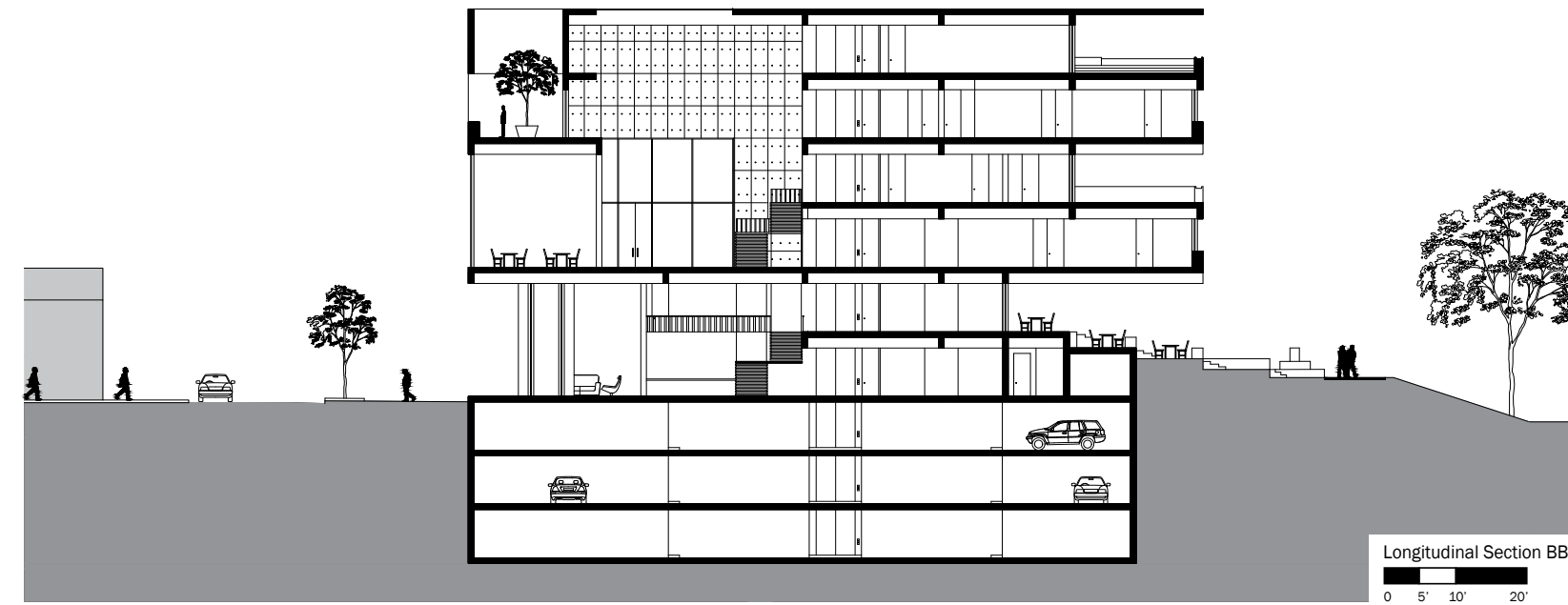
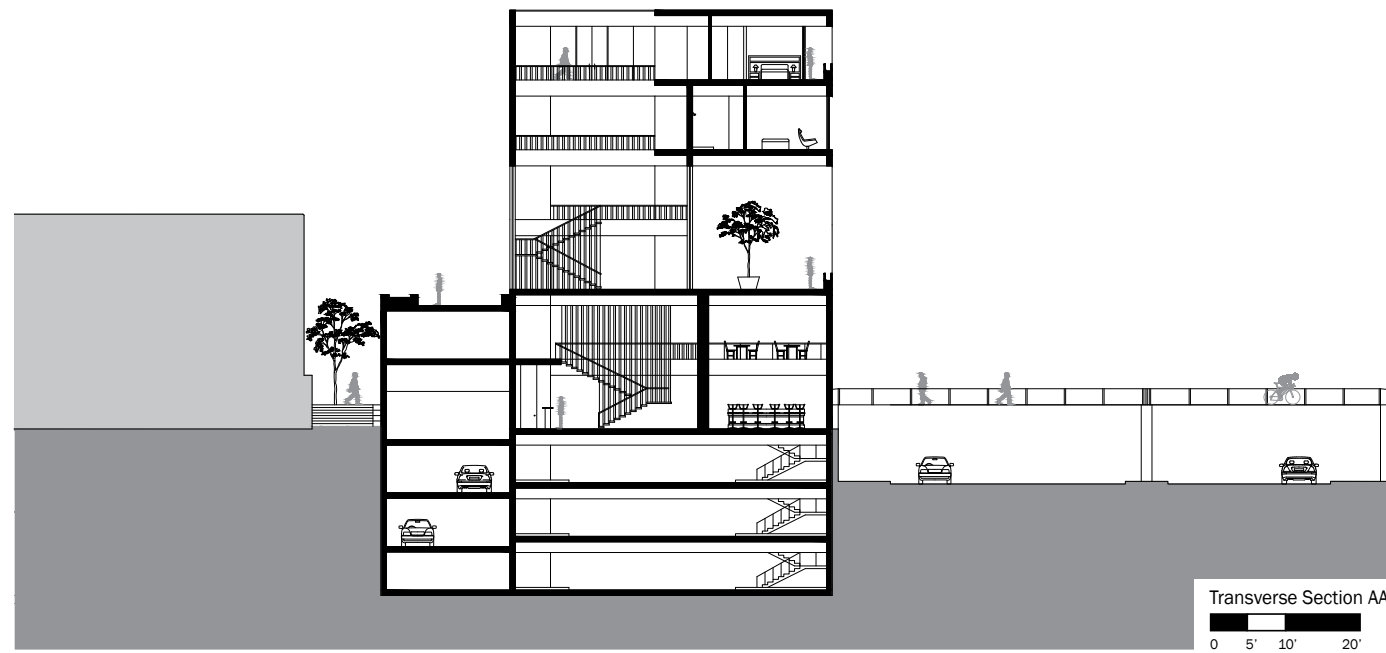
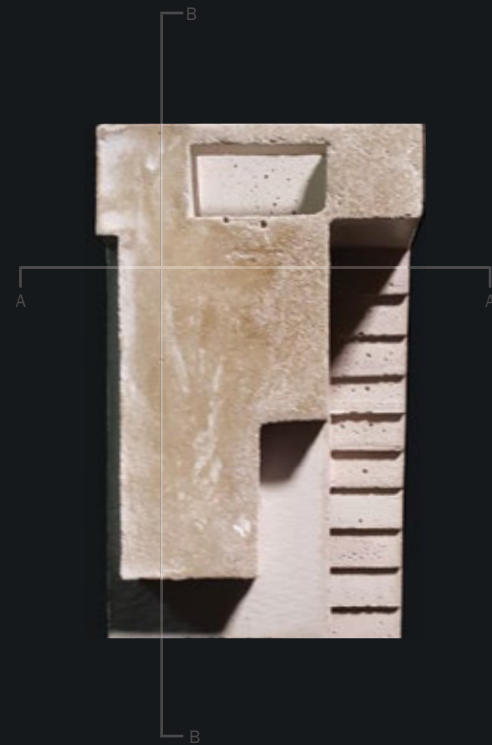
THE BRYAN HOTEL

- Situated on the corner of North Fitzhugh Boulevard and Buena Vista Street in Uptown Dallas, The Bryan Hotel is a mixed-use structure. The building program includes a boutique hotel with an events center, and a restaurant/cafe located directly on the popular Katy Trail. The aim of the project is to connect the Trail to the Hotel expanding the public space and blurring the line between the public and private space on the trail.

Analysis of the site revealed that pedestrian access to the trail is limited on the Buena Vista Street side, creating an access point to the trail will further incorporate the project into the trail and expand the trail access. Contextually, the project aims to create a buffer to negotiate between the busy commercial Fitzhugh Boulevard and the residential Buena Vista Street. Extending the trail into the hotel allows the hotel guests to have direct access to one of the most popular attractions in Dallas.

The architectural strategy for creating the building form started with dividing the program into two parts, the mixed-use part of the hotel, and the residential part. Each being represented with a solid block. In order to create pedestrian access to the trail, the residential block was shifted to the North Fitzhugh Boulevard side. This allows daylight in and welcomes pedestrians to use the access point while continuing the urban edge on Buena Vista Street and protecting the privacy and shelter of the trail and its users.

Given the demands of the program, site opportunities for views, vehicular and pedestrians traffic, both blocks were carved and pieces of each were removed. Through a methodical gradual process of carving, daylight access, circulation corridors, private balconies, event spaces, and public terraces were removed as blocks carved out from the mass to create spaces or voids. As a subtractive process, carving the mass creates space that resembles a mold which inspired the use of cast concrete throughout the project.

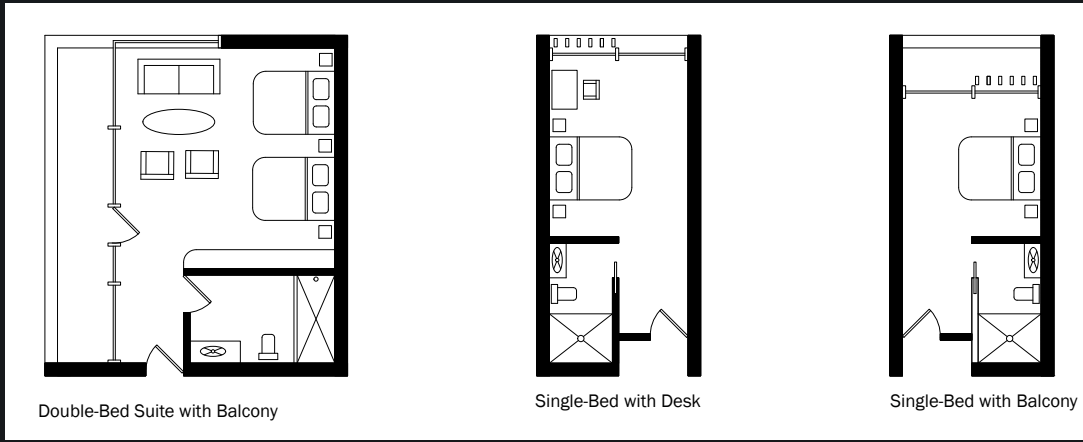
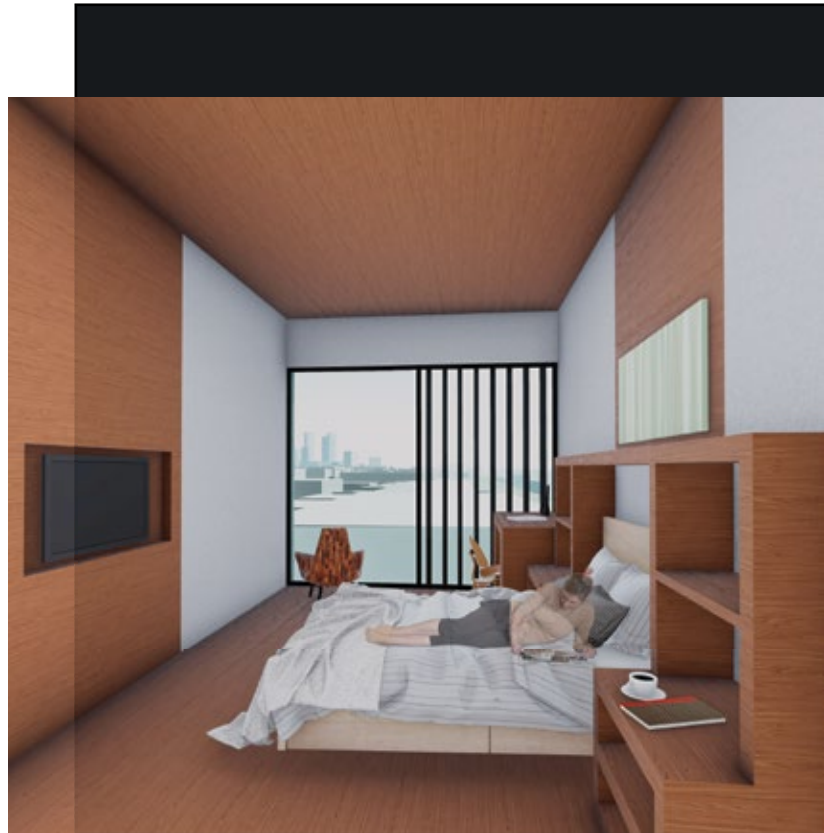
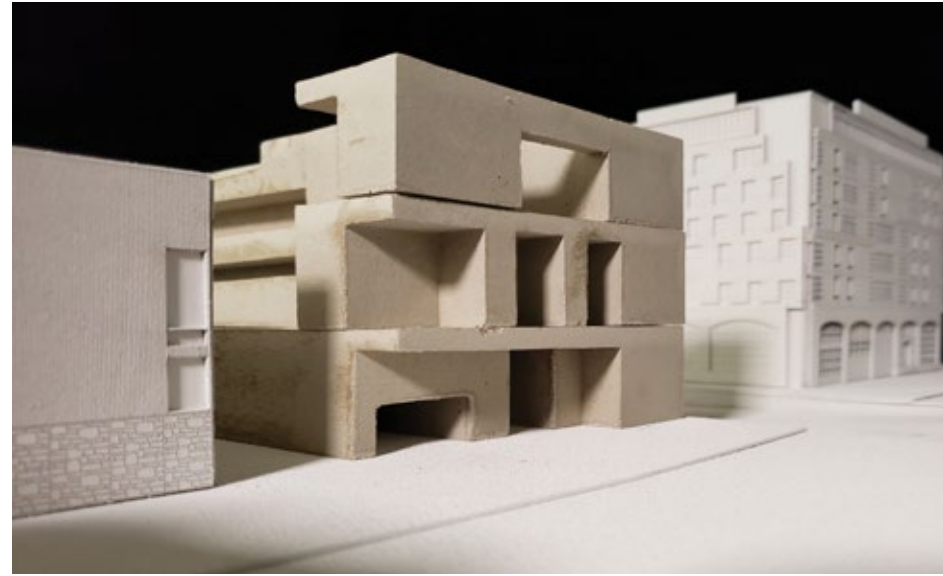


Program is vertically distributed with below ground parking, public amenities, lobby, and trail access on the first two levels, event space on the third level, guest rooms on the third, fourth, and fifth floors, and a public roof top terrace with a restaurant, and pool.

Daylight reaches the center of the building and penetrates through the top three floors connecting other outdoor spaces inside the building on the third, fourth, and fifth floor with a circulation atrium bifurcating each floor.

The facade is made of an alternating pattern of pivoting wood shade devices, window glazing, and board-formed cast-in-place structural concrete. The trail is extended into the building with the plants on the the fourth, fifth and sixth floor terraces and the balconies

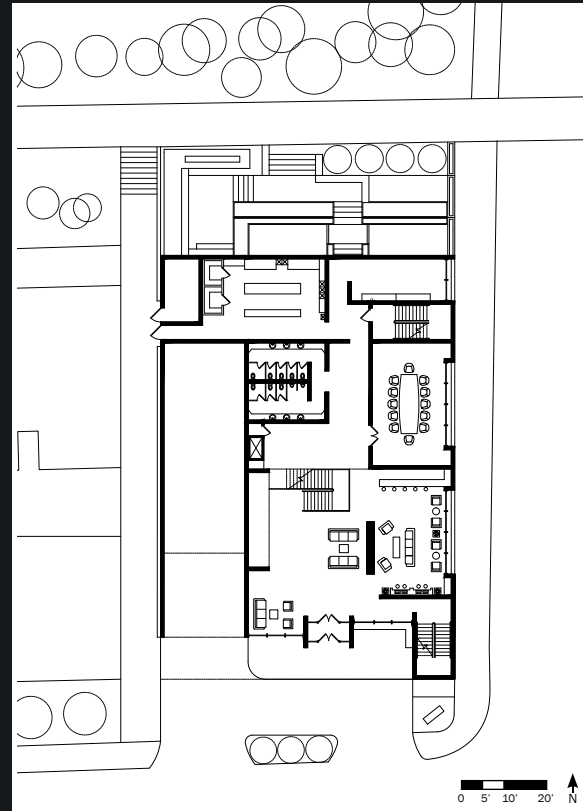




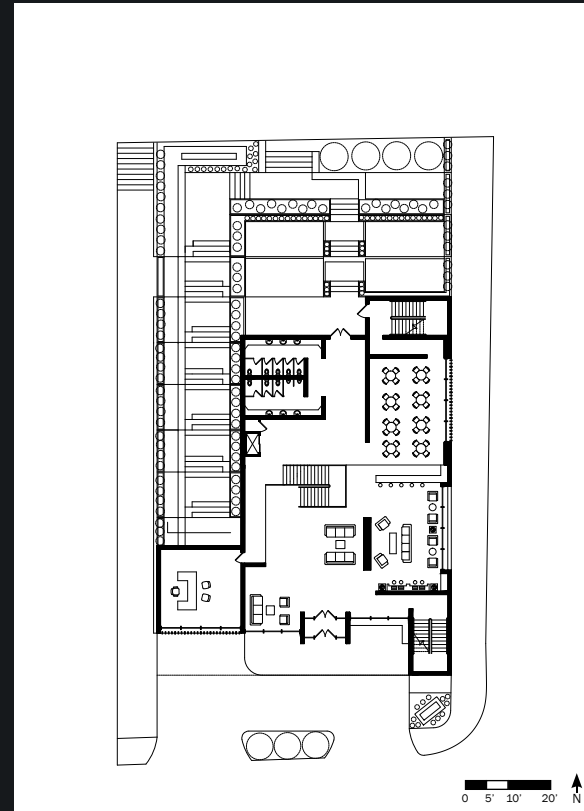
The hotel offers three different room types. Each room features an extension of the materials used in the lobby and facade of the building. Structural board-formed poured-in-place concrete walls, beams, and columns provide a rich textured natural finish. Services and storage are located below the stepped seating area.

The lobby is located on the ground level and is connected to the second level with a hanging staircase. The restaurant is located on the second level and can be accessed from the ground level and the Katy trail directly. The stepped platform extends the trail into the project and integrates the context.

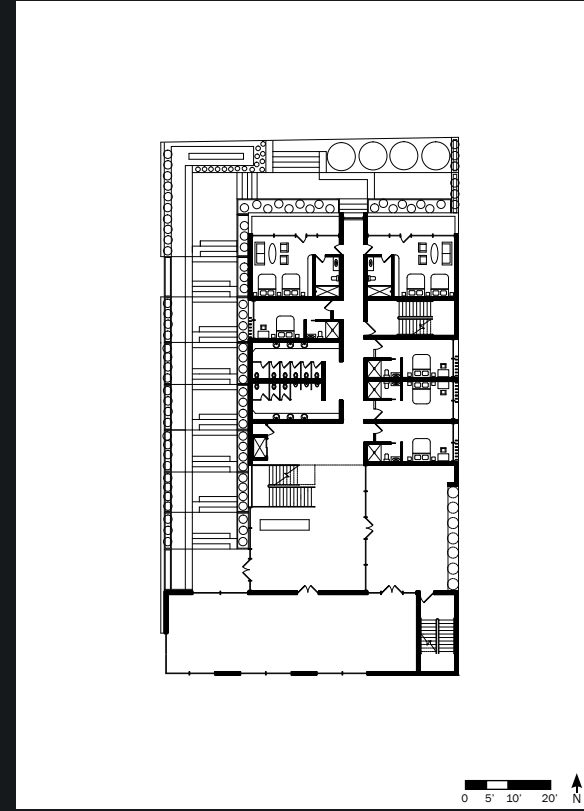




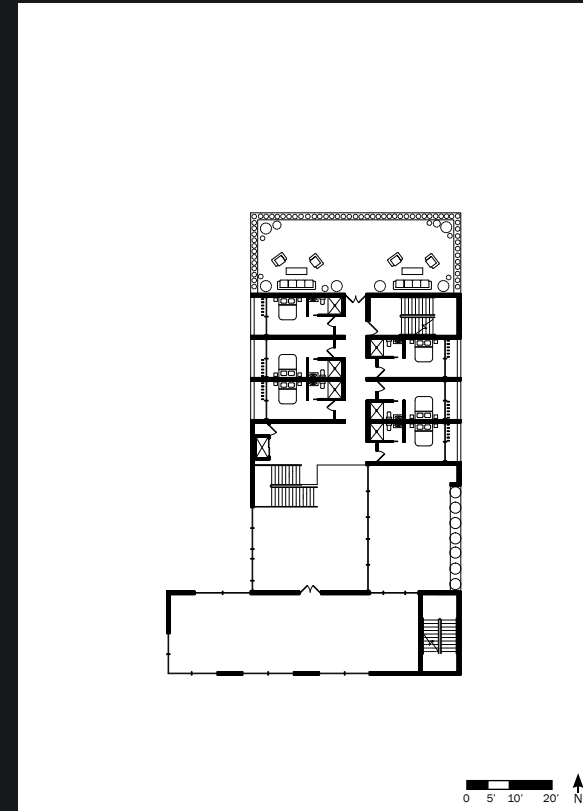
First Level



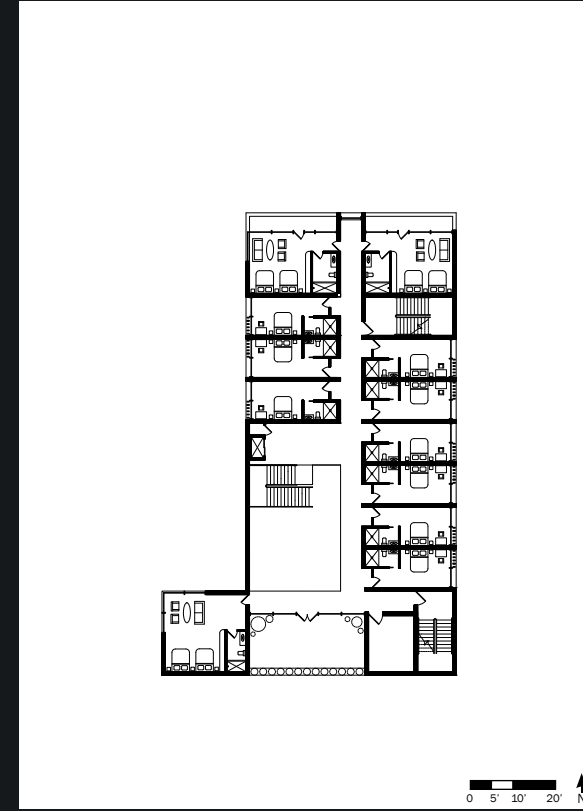
Second Level



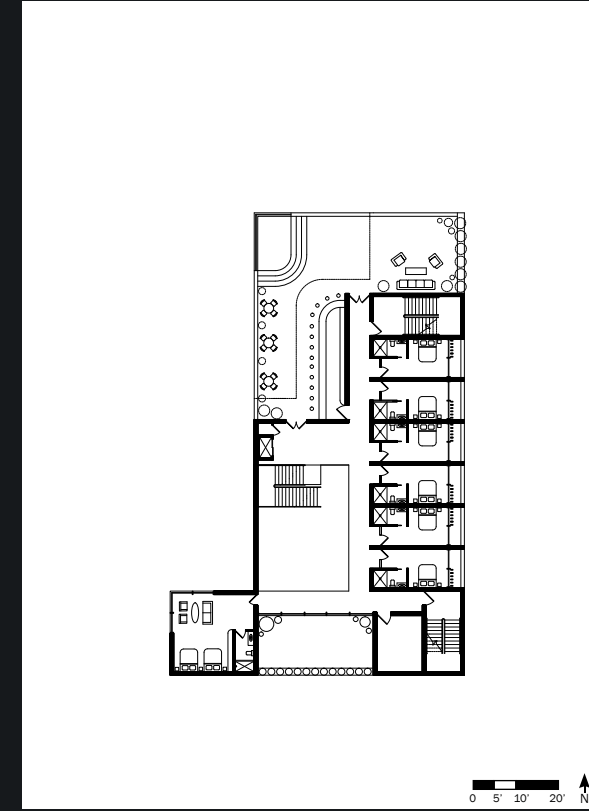
Third Level



Fourth Level



Fifth Level



Sixth Level

Entry / Lobby: (1,000 sf)

Description: building entrance
 Function: reception area, gatherings
 Adjacencies: concierge, elevators, offices
 Notes: seating, reception desk, services

Manager's Office: (150 sf)

Description: office for hotel manager
 Function: offices, business functions
 Adjacencies: lobby, entry, event spaces, concierge
 Notes: private office, office furniture

Meeting Room: (600 sf)

Description: space for professional meetings
 Function: gatherings, presentations, lectures
 Adjacencies: lounge, bar, services, lobby, concierge
 Notes: seating, presentation equipment

Conceirge: (100 sf)

Description: coat / bag check service, vallet
 Function: check in of coats, bags, cars
 Adjacencies: entry / lobby, restaurant, event space
 Notes: requires space to store coats and bags

Cafe / Restaurant: (1,000 sf)

Description: outdoor and indoor restaurant
 Function: sell food and snacks to guests
 Adjacencies: kitchen, social areas, services.
 Notes: circulation, small storage, concierge

Bar / Lounge: (750 sf)

Description: bar for the lobby of the hotel
 Function: space for guests to lounge and have drinks
 Adjacencies: lobby, entry, restaurant, concierge
 Notes: required presentation screen, student desks

Hotel Rooms: (18,000 sf)

Description: 30 hotel rooms
 Function: space for guests to sleep and shower
 Adjacencies: circulation, outdoor terraces, services
 Notes: seating, TV, entertainment, bookshelf, beds

Event Space: (3,000 sf)

Description: space for gatherings or social events
 Function: gatherings, dinning, socializing, etc..
 Adjacencies: concierge, lobby, services
 Notes: removable seating, entertainment space

Circulation and Mechanical: (3,500 sf)

Description: mechanical room, stairs, elevator.
 Function: services, connection, egress.
 Adjacencies: lobby, event space, restaurant, bar
 Notes: code and fire safety requirements.

Services: (2,000 sf)

Description: storage, restrooms
 Function: shared accommodations
 Adjacencies: social spaces, lobby, restaurant
 Notes: requires shelving for storage, elevators

Outdoor Terraces: (8,000 sf)

Description: outdoor event space
 Function: outdoor events, gatherings
 Adjacencies: hotel rooms, event space
 Notes: requires shading, outdoor seating

Air-Conditioned Area: 30,100 sf
 Non-Air-Conditioned Area: 8,000 sf
TOTAL AREA = 38,100 sf

Views of the Dallas skyline and the Katy Trail located the rooftop terrace and pool on the North Western corner of the sixth floor of the hotel.



I.G.R.I.T. STUDENT HOUSING

PLAZA SAN JERONIMO
MEXICO CITY, MEXICO

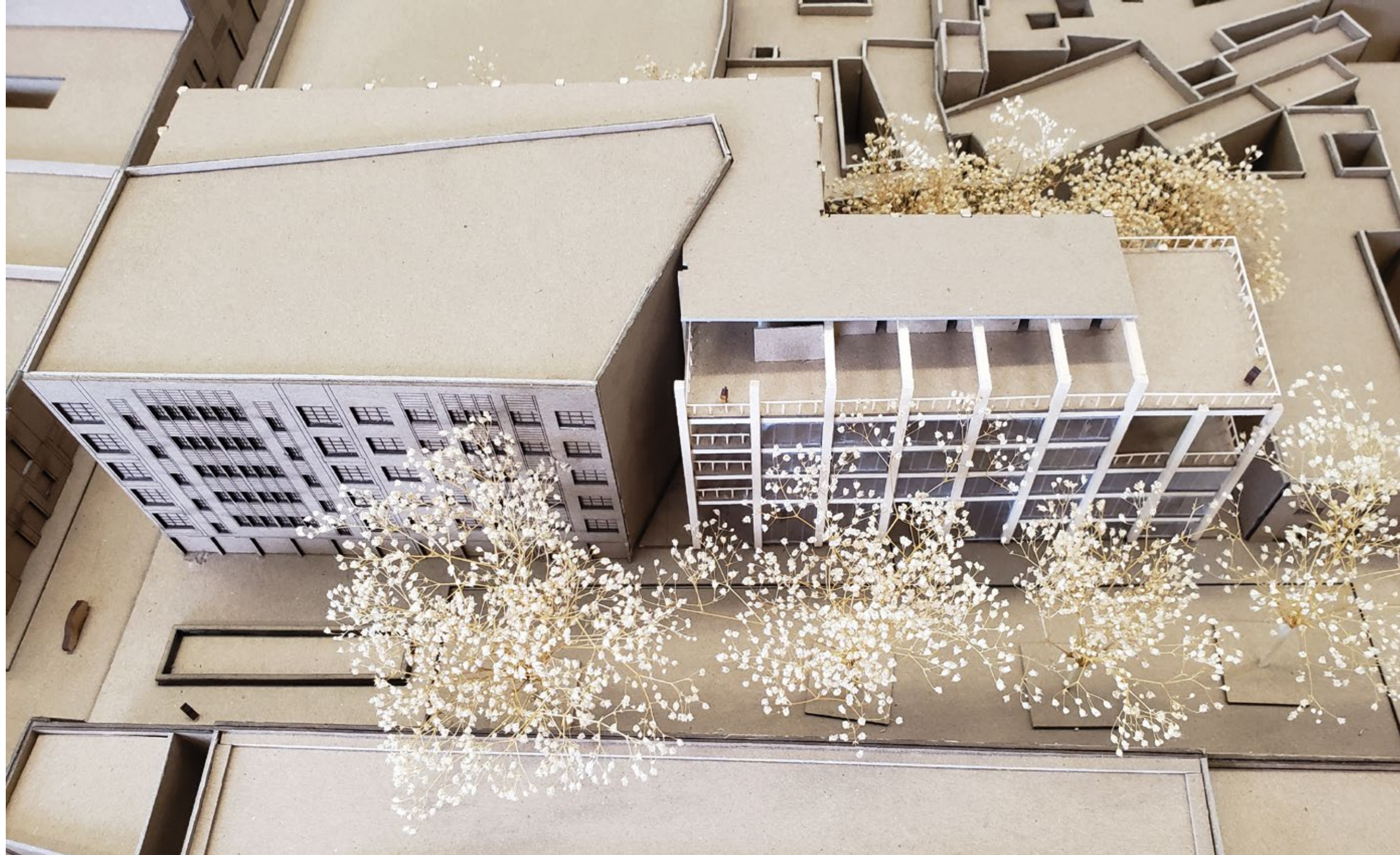
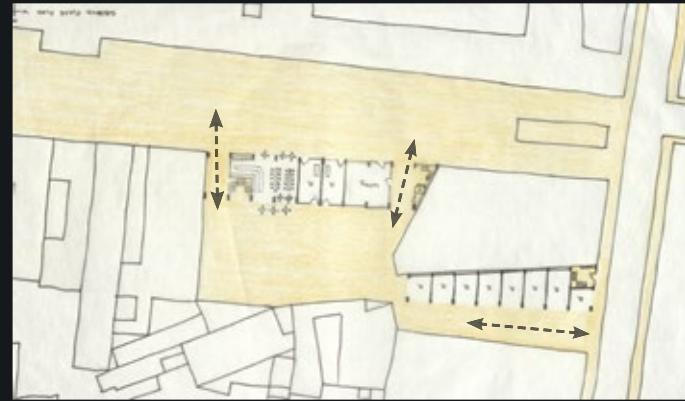




Figure ground map of site and context



Connecting the public space and pedestrian paths



Reversal of figure ground shows the void in the urban edge

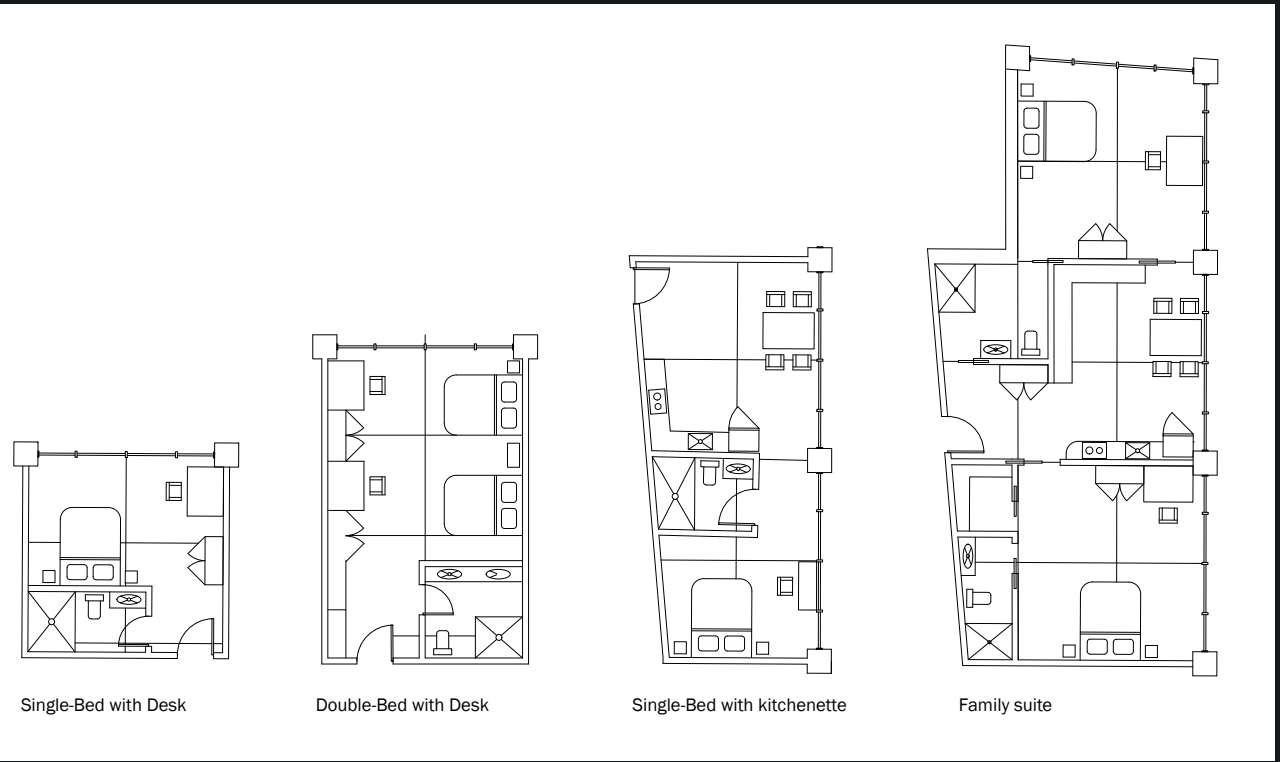


Context Model, 1/16"=1', chipboard, balsa wood, mdf.

International Graduate Research Institute of Tenochtitlan

I.G.R.I.T. - is a new research institution that allows students from all around the world to come together and collaborate with local institutions to conduct research as well as provide classroom, studio and lodging spaces for international study programs. This institution has a unique campus that is divided into different functions and distributed throughout the historic center of Mexico City. This project aims to create a space that serves as a housing complex for the I.G.R.I.T. students where they can lodge while visiting the city and conducting their research.

The selected site is nestled between San Jeronimo Plaza and Isabela Catolica Street allowing an opportunity to create a public space connecting the pedestrian plaza and bustling commercial street. The proposed site is located where one of the historical water canals used to pass. This unique condition inspired the idea to resurrect the canal celebrating the architectural history of the site and the city with a courtyard and a performative rain-collecting water feature commemorating the significant role the canals played in the morphological evolution of the city's existing urban landscape.

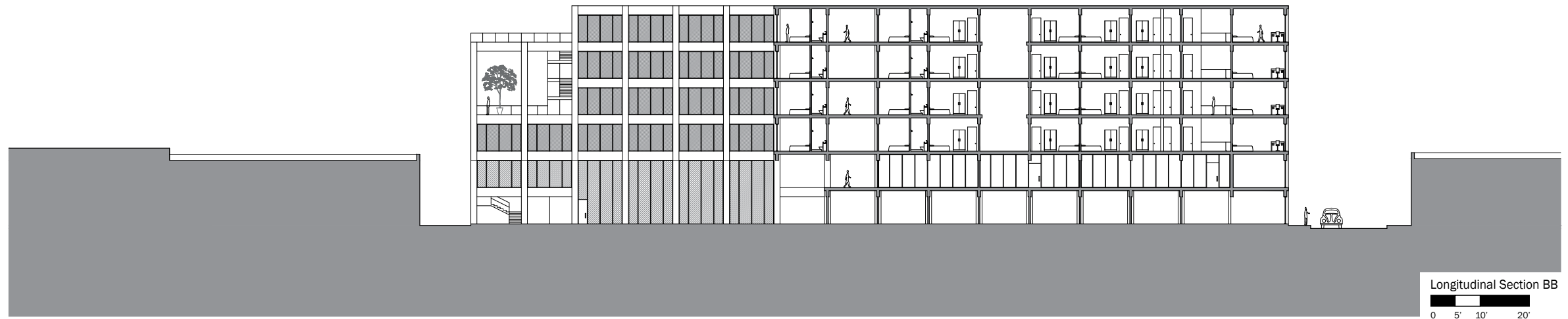


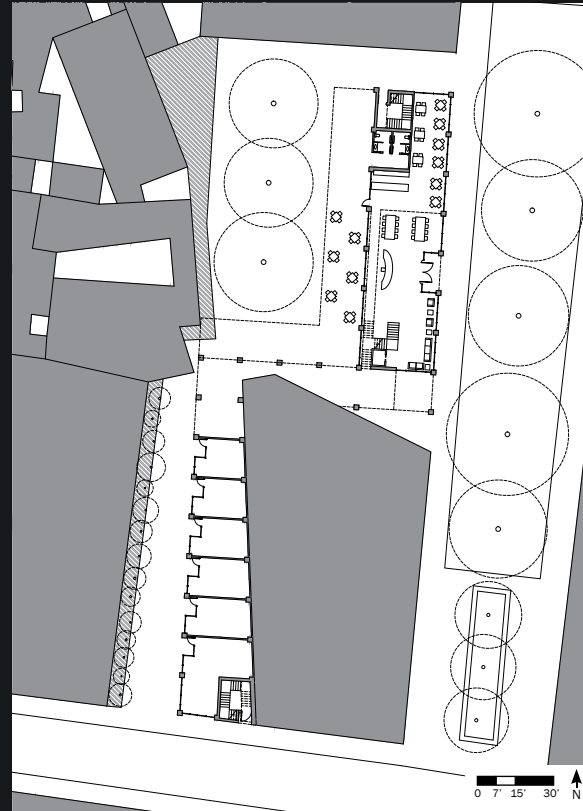
The project aims to preserve the urban edge and allow access to the historical canal as well as the existing traditional market on the north side of San Jeronimo Plaza. The proposed design connects the plaza to the busy commercial street while creating a publicly accessibly private courtyard.

Due to the location and the program demands, the projected morphed into a mixed-use building which includes retails shops, cafe and restaurant, administrative offices, meeting and social spaces, as well as lodging for international graduate students.

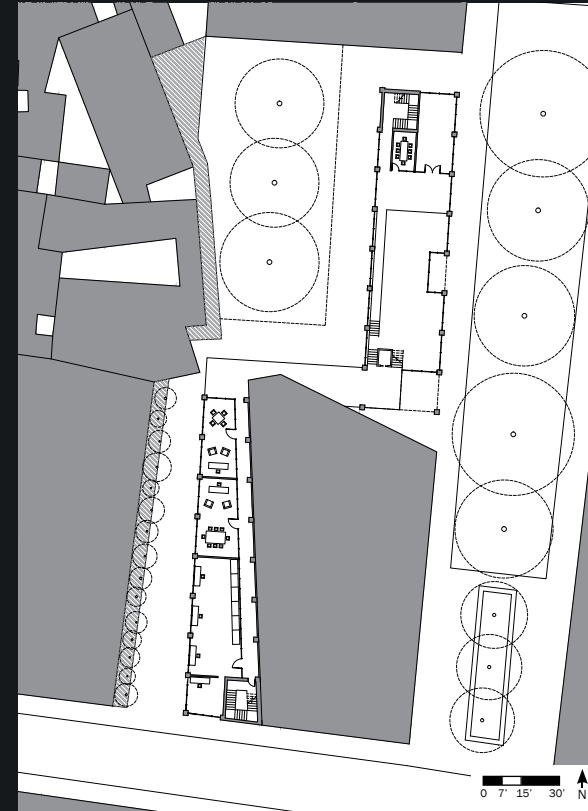
Four different types of units are offered to accommodate the varying lengths of stay for the traveling students. The services and public amenities are located on the first two levels of the building. A computer lab, meeting rooms, and administrative offices are located on the second floor.

To allow for maximum efficiency and permeability, the building utilizes a dom-ino structural system comprised of concrete columns and beams. Window glazing fills the units created from using a modular grid resulting in a strictly ordered facade.

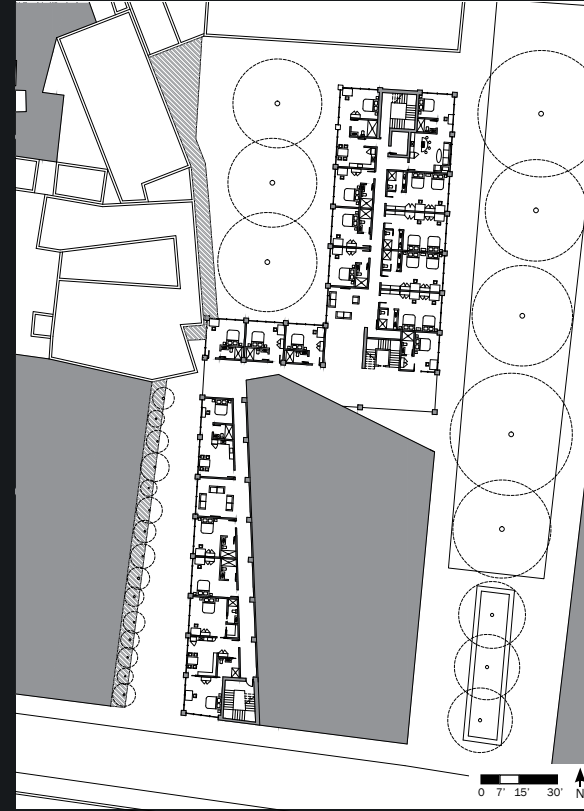




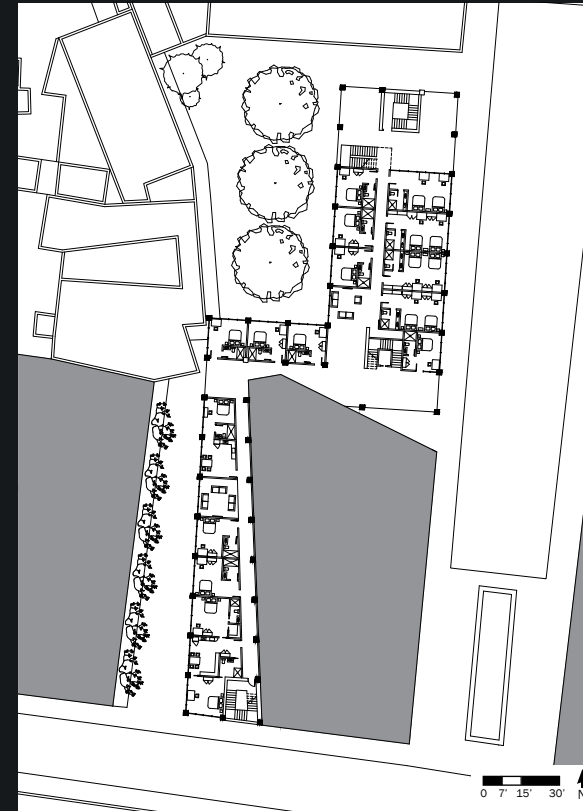
First Level



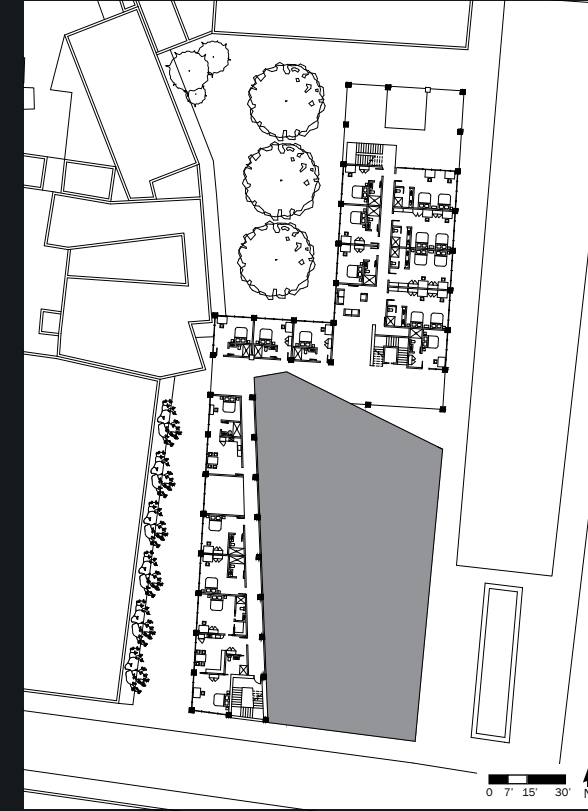
Second Level



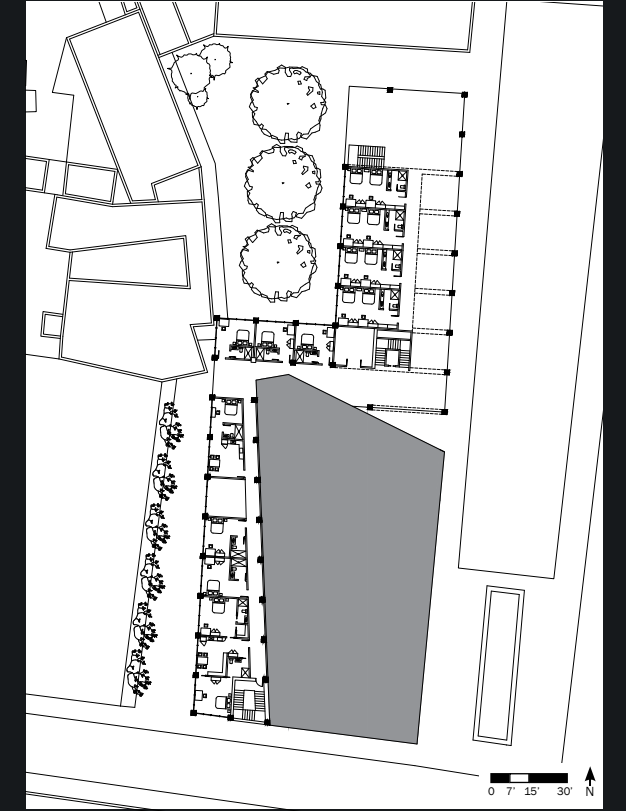
Third Level



Fourth Level



Fifth Level



Sixth Level

Entry / Lobby: (1,000 sf)

Description: building entrance
 Function: reception area, gatherings
 Adjacencies: computer lab, elevators, offices
 Notes: seating, reception desk, services

Meeting Room: (600 sf)

Description: space for professional meetings
 Function: gatherings, presentations, lectures
 Adjacencies: admin offices services, lobby,
 Notes: seating, presentation equipment

Cafe / Restaurant: (1,000 sf)

Description: outdoor and indoor restaurant
 Function: sell food and snacks to students
 Adjacencies: kitchen, social areas, services.
 Notes: circulation, small storage, outdoor patio

Student Rooms: (38,000 sf)

Description: 65 student rooms
 Function: space for students to sleep and shower
 Adjacencies: circulation, outdoor terraces, services
 Notes: sleeping area, bookshelf, beds

Circulation and Mechanical: (7,000 sf)

Description: mechanical room, stairs, elevator.
 Function: services, connection, egress.
 Adjacencies: lobby, event space, restaurant, rooms
 Notes: code and fire safety requirements.

Outdoor Terraces: (4,600 sf)

Description: outdoor event space
 Function: outdoor events, gatherings
 Adjacencies: rooms, event space
 Notes: requires shading, outdoor seating

Admin Offices: (1,850 sf)

Description: offices for admins
 Function: offices, business functions
 Adjacencies: lobby, entry, event spaces, market
 Notes: private office, office furniture

Retail Market: (4,000 sf)

Description: space for retail, small shops
 Function: retail of various goods, commercial use
 Adjacencies: street front, courtyard, outdoor space
 Notes: must be on ground level, easy access.

Computer Lab: (750 sf)

Description: area to use computers, printers, etc..
 Function: provide students access to computers
 Adjacencies: lobby, entry, restaurant, event space
 Notes: required on first or second level

Event Space: (1,000 sf)

Description: space for gatherings or social events
 Function: gatherings, dining, socializing, etc..
 Adjacencies: outdoor terrace, lobby, services
 Notes: removable seating, entertainment space

Services: (4,300 sf)

Description: storage, restrooms
 Function: shared accommodations
 Adjacencies: social spaces, lobby, restaurant
 Notes: requires shelving for storage, elevators

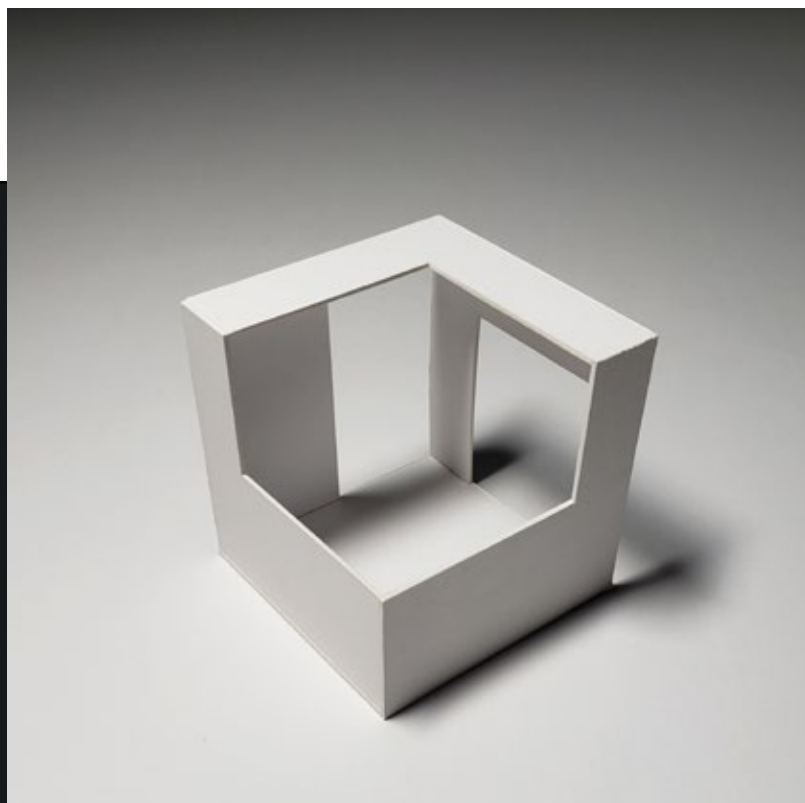
Air-Conditioned Area: 59,500 sf

Non-Air-Conditioned Area: 4,600 sf

TOTAL AREA = 64,100 sf



Building model, 1/16" = 1"
Chipboard, balsa wood



THANK YOU