

### 1.3. Chain of Command

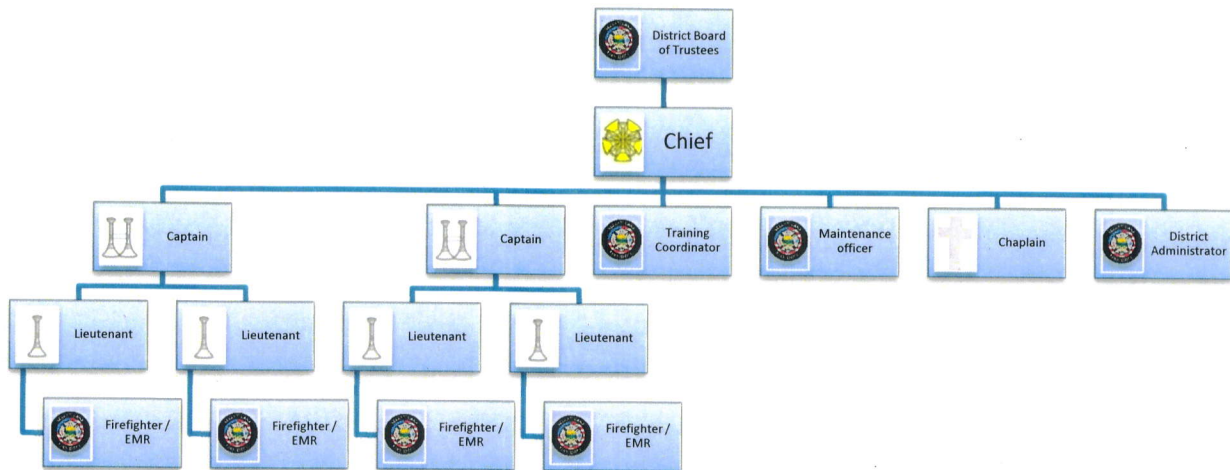
**Purpose:** The Chain of Command in the Seeley Lake Rural Fire District is the order of vested authority and responsibility by which the operations of the District shall be conducted. It serves the function of allowing information to flow in an orderly manner from Firefighter/EMT to Chief and all steps in between.

**Application:** This SOG is to be used in the management of all SLRFD personnel.

**Scope:** This policy applies to all members of the Seeley Lake Rural Fire District.

It is the responsibility of each member to know and understand the chain of command within the Seeley Lake Rural Fire District. In the event that no ranking officer is available, seniority according to membership shall be the determining factor in rank. With the absence of a ranking officer, the most senior firefighter shall be the OIC.

All communication pertaining to District issues and/or business must follow the Chain of Command. In cases of emergency or extreme urgency, the member initiating the communication must convey that urgency to the immediate ranking member. The Chain of Command is established to provide a mechanism to enhance the effectiveness of communications. The Chain of Command is a means of empowering members to address needs of the District and its members in meeting our goals and objectives. Any communications with outside agencies or other Seeley Lake Rural Fire District should also follow the Chain of Command. The chain of command shall be structured as follows:



Approval

Signed

Date Effective

3/5/18