

# AUTO MAG

NATIONAL AUTOMATIC PISTOL COLLECTORS ASSOCIATION  
BOX 15738 • TOWER GROVE STATION • ST. LOUIS, MISSOURI 63163

VOLUME XXIII - ISSUE #2

MAY 1990

## WELCOME TO NEW MEMBERS AND OLD FRIENDS

Leonard E. Bade - Ohio  
Alan Christmas - England  
Ken Descovich - California  
Joesph A. Gautreau - California  
Ronald K. Harris - California  
Lewis G. Kester, Jr. - Delaware  
William L. Morris - New Mexico  
Howard T. Pince - California  
James A. Small - Georgia  
N. J. van Gijn - Holland

Garon Camassar - Connecticut  
Harold F. Davidson, Jr. - Indiana  
Denis J. Gaudey - Florida  
Richard L. Geer - Illinois  
George Hegland - California  
Harvey R. Lipp - Washington  
Kenneth O. Nasife - California  
W. J. Sandridge - Texas  
Bud W. Smith - Florida  
James D. Vasey - Oregon

TO JOE SCHROEDER, CHRIS BEEBE, AND OTHERS FROM TOM KNOX I sincerely appreciated your suggestions to increase our yearly dues by \$10 and \$25 respectively, to be used for covering my time, etc. I also sincerely appreciate the checks received from both Fred Vilmar and Dave Ginsburg as a result of Joe's suggestion....it's nice to know you gentlemen care. I didn't take the job for the pay (obviously), but because I care about collecting and each and every one of you! Even though my spelling isn't always correct, and even though some of your material gets sidelined at times (sorry Harold, I don't know how the ad slipped by last month), and even though I don't have all the answers to all your questions that go unanswered, I really try hard to make this the best damn collecting publication in the world. Bottom line is that even though I am your commander-and-chief, I can't ask for you to send in any extra money as that was never part of the plan, but you'll never know how much the thought meant to me.

\* Last week, I was contacted by 213 TV, in Los Angeles. This firm is in the process of filming a pilot for a new series covering collecting in America. I offered them as much advice as I could, and did give them a few names of California members who I personally know, and thought would like to participate. I also offered them the use of the NAPCA video that Rod Stout made up for the convention a couple of years ago. If any of you would like to participate in this adventure, just drop me a post card. This sounds like a chance for us to finally get some positive PR, so I'm gonna help in any way I can. Besides, maybe after 43 years, I'll be 'discovered'...

27

The Auto Mag is published each month by the National Automatic Pistol Collectors Association: Thompson D. Knox, President; and Editor, Joan E. Knox, Secretary Treasurer; Ernie Lang, Vice-President; Daniel M. Byrne, Donald Crews and John R. Carlson, Governors. Executive and Editorial address: Post Office Box 15738, Tower Grove Station, St. Louis, Missouri 63163. Manuscripts and art material will be carefully considered, but will be received only with the understanding that the Editor shall not be responsible for loss. Photographs submitted should be black and white, no larger than 8x10. Unless return is requested, all photographs become the property of NAPCA. Material must be received by the 20th of the month in order to appear in the next monthly issue. The Auto Mag will not knowingly insert any text from other than reliable persons. Membership rates: \$25.00 per year for the United States, Canada and Mexico; \$35.00 per year elsewhere. All memberships expire yearly on the 31st of March. Reproduction in any manner, in whole or part, in English or other languages, is prohibited. All rights reserved throughout the world. Reprinting not permitted except by special authorization. First class postage paid at St. Louis, Missouri.

Copyright © 1989-1990 NAPCA  
All rights reserved.

## THE TOTENKOPF LUGER

by Klaus Schad

I recently acquired some new information from several books which I would like to share with the membership. Hopefully, I can shed some new light onto this mystery. Criticism and discussion are welcome.

The sources of this information are the following books: Das Ehrenbuch der Deutschen Pioniere and Die Geschichte des Deutschen Heeres im Weltkrieg 1914-1918. And, a special thanks to Jan C. Still, Reinhard Kornmayer, Bob Pedigo and Ulrich Schiers of the Wehrgeschichtliches Museum in Rastatt/Baden.

In my opinion, two important origins of the Totenkopf P.08 are discussed as Nos. 2 and 5 on page 105 of **Pistols of Germany and Its Allies in Two World Wars, Vol. I** by Jan Still. I would like to discuss the Garde-Reserve-Pionier-Regiment and the Stosstrupp of WWI in light of these new information which I have uncovered.

The Garde Reserve Pionier Regiment (G.R.P.R.) was a distinct and listed unit created in 1916 of the 3rd and 4th battalions of the Garde Pionier Bataillon. The regiment itself consisted of three battalions, approximately 3000 men, commanded by a Major Dr. Reddemann. The flamethrower troops of the G.R.P.R. were called Stosstrupps. (**Das Ehrenbuch**, pg.520). The concept of stosstrupp had been established by the G.R.P.R. and only much later integrated into other units.

It should be noted that **Das Ehrenbuch** was written by none other than Major a.D. Dr. Reddemann himself and he should have known if his flamethrowers were called Stosstrupps or not! Since the G.R.P.R. was a distinctive unit, then its Stosstrupps had to be distinctive also!

On July 28, 1916 after 150 missions, this famous regiment was honored with its highest award from the Kaiser: the Totenkopf. The award was a patch worn on the lower left uniform sleeve. From that moment on, the members of the G.R.P.R. called themselves "Die Totenkopf Pioniere." The accompanying photos taken in October 1989 at the Rastatt Museum in Baden, West Germany show this award. The G.R.P.R. was an elite unit and even after WWI, whenever the surviving members attended their veteran meetings, they proudly displayed the Totenkopf badge on their civilian clothes!

In 1915, the leader of the 3rd Company of the Garde Schützen Bataillon, Captain Willi Rohr, was transferred to the Armee Abteilung Gaede, where he reorganized the recently formed Sturm bataillon. Because of its gallantry, success and courage, this batalion was honored and named after its leader, Sturm Bataillon Rohr. His methods and tactics in modern warfare were soon adapted by most combat units. During the summer of 1916, additional Sturm bataillone were formed by order of the High Command. Sturm bataillon Rohr consisted of one transport company, one light grenade launcher company, one battery of 105mm howitzers, two machine gun companies and one platoon of

Flamethrowers. Please note that the Stosstrupps of the G.R.P.R. were permanently detached to the Sturmbataillone. (**Die Geschichte**, pg.187) Therefore, the Stosstrupps of the G.R.P.R. were an integrated unit of the Sturmbataillon wearing the Totenkopf insignia. This is contrary to the unsubstantiated opinion of some authors such as John Walter, that the Stosstrupp was never a distinctive unit with totenkopf insignia.

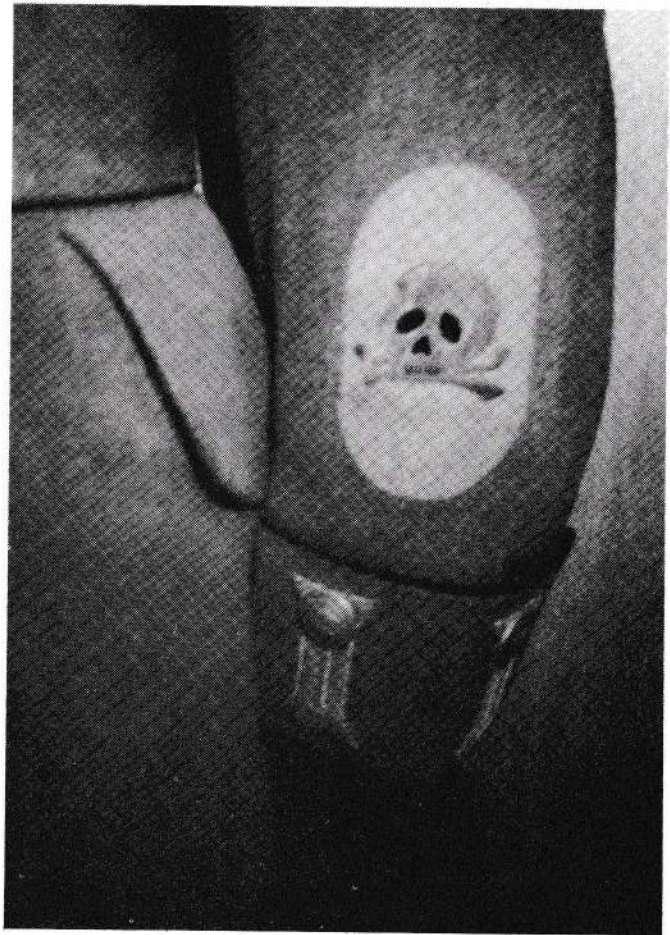
Jan Still discussed the Totenkopf Luger with a former employee of a large and well known firearms dealer/importer, who indicated to him that of tens of thousands of surplus Lugers were imported in the 1960s, over two years time approximately sixty to seventy Deaths Head Lugers were stored with other rarities in a special room, reserved for collectibles. Virtually all these Lugers had several features in common: 1. Most were 1917 and 1918 dated, all were DWM and Erfurt, with DWM predominating. A couple were 1920 reworks and all of 9mm caliber. 2. Most were matching. Proof marks were 100% military. 3. Deaths Head were stamped and not engraved. 4. Deaths Head were at least of two types. The "Lazy-S" was displayed above and under the skull. Few had the true skull and crossbones superimposed and not all were stamped sideways on the receiver. 5. Approximately 50% of the observed 60-70 Deaths Heads were received originally as destroyed guns. These had holes of approximately 1/3" drilled through the side of both receiver and barrel clear into the chamber at a 45° angle.

What of the other possible explanations of the Totenkopf insignia? The 1. and 2. Leib Husaren Regiments, Braunschweigisches Husaren Regiment Nr.17 and the Braunschweigisches Infanterie Regiment Nr.92? It is my opinion that a mix of early dated, or even one issue marked Deaths Head Luger should have been found. The Stosstrupp Hitler, SS, Weimar Republic and Freikorps? We really do not have much to go on that, especially no documented proof. An examination of Freikorps insignia shows a few units used the Totenkopf insignia. A condemnation destruction mark? The Germans are not a wasteful people. What would be the purpose for someone to come up with a Deaths Head stamp in order to discard the weapon? A simpler symbol would be more believable. However, those imported Lugers with drilled holes may lend some credibility to this theory.

I would like to agree with Randall Gibson that the "Lazy-S" does not stand for an "S" at all. It could very well symbolize the flamethrower hose spraying death to the enemy. The hoses of the heavy duty stationary equipment measured up to thirty meters (90 feet). A good chance to solve this mystery would be the discovery of a Totenkopf Luger with a unit mark. According to Kenyon, page 232 2nd column, the author is confirming the existance of many such unit marked Lugers. If the membership has any knowledge about this, then your immediate response would be greatly appreciated.

In my opinion, until definitive evidence to the contrary is found, the "origin" of the Totenkopf Luger is the G.R.P.R.!

The pictures were taken in October 1989 at the Wehrgeschichtliche Museum in Rastatt/Baden.  
The Totenkopf patch on the left lower uniform sleeve was awarded to the Garde Reserve Pionier Regiment on July 28th 1911 from Kaiser Wilhelm II. From that moment on the G.R.P.R. called themselves proudly "Die Totenkopf Pioniere".



John F. McAhon to the Imperial P08 "Volks"..

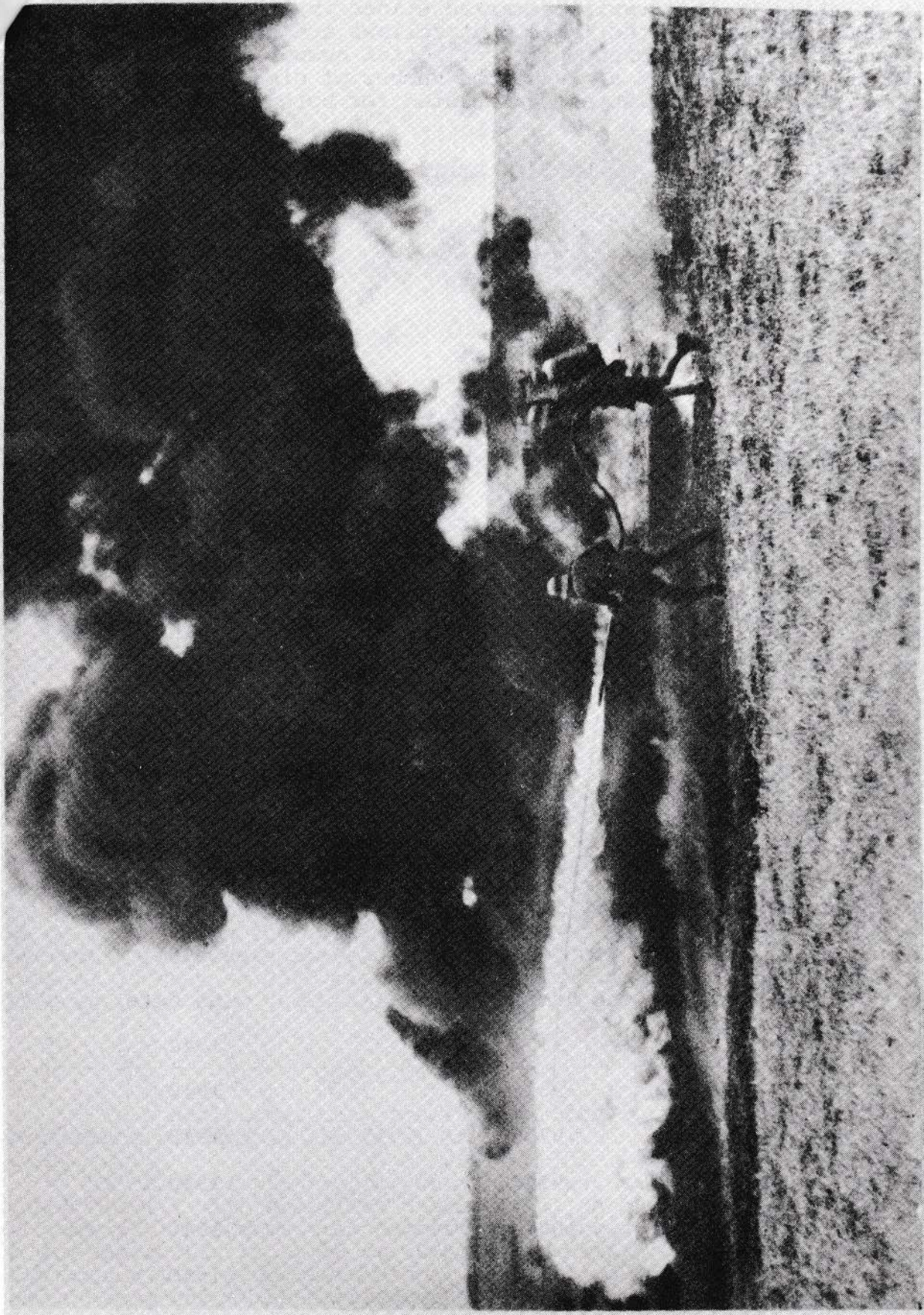
I recently acquired a 1912 Erfurt P08, ser. #7056a. One thing struck me as unusual: the rear connecting pin has the 'heraldischer Adler', or Erfurt proof eagle, on the left face of the pin. I haven't seen this before, and cannot find reference in any of the recently available documents from the German archives to explain the presence of the eagle. Does anyone have any ideas, info., etc.?

To Joe Schroeder, George Winat, Klaus Schad

I just (4-13-90) received the April edition of AM. Many thanks to all of you for the submissions of the Erfurt data. Joe, can you furnish additional data on the '17 Erfurt you wrote about...serial, etc. I'll be looking forward to the picture of the unusual proof. George, what are the different proofs, and the mark added when they retrofitted the holdopen? Klaus, I envy your list of unit marked Erfurts, and the Stuttgart-made holster. I went to high school in Stuttgart, 1958-62.

To Tom Heller and Don Hallock

Many thanks for the recent trades. Your pieces filled two gaps in the year dates, and I am just tickled pink. All I need now is a 1911 dated Erfurt, and the year dates will be complete.



Zu den modernsten Nahkampfmitteln gehörte der „Stammenwerfer“, der insbesondere gegen Unterstände, Maschinengewehrnesten und Tanks Verwendung fand. Es handelt sich um einen tragbaren zylindrischen Behälter mit langem Schlauchmundstück, aus dem mittels Preßluft brennendes Öl in einer riesigen Stichflamme geschleudert wurde. Die Entzündung erfolgte beim Ausströmen auf chemischem Wege. Die dabei entwickelte Hitze war derart, daß die Betroffenen sofort zu Kohle verbrannten. Hinter der starken Rauchwolke konnten sich die Sturmtruppen leicht entwickeln.

More data relating to the Brazilian marked slides is presented below: The DELTA columns in the table that follows are the numerical differences between the adjacent pairs of serial numbers. These DELTAs are useful in determining at a glance the number of pistols between each pair of examples. DELTAs are calculated for both the Colt and Brazilian serials.:

| COLT#   | DELTA | BRAZIL#   | DELTA | CONTRACT |
|---------|-------|-----------|-------|----------|
| C190971 |       | 953       |       | 1937     |
|         | 1571  |           | 1628  |          |
| C192542 |       | 2581      |       | 1937     |
|         | 1835  |           | 1598  |          |
| C194377 |       | 4179      |       | 1937     |
|         | 547   |           | 201   |          |
| C194924 |       | 4380      |       | 1937     |
|         | 135   |           | 71    |          |
| C195059 |       | 4451      |       | 1937     |
|         | 1004  |           | 685   |          |
| C196063 |       | 5136      |       | 1937     |
|         | 1638  |           | 2181  |          |
| C197701 |       | 7317      |       | 1937     |
|         | 365   |           | 16    |          |
| C198066 |       | 7333      |       | 1937     |
|         | 45    |           | 98    |          |
| C198111 |       | 7431      |       | 1937     |
|         | 3424  |           | 883   |          |
| C201535 |       | 8314      |       | 1940     |
|         | 49    |           | -94   |          |
| C201584 |       | 8220      |       | 1940     |
|         | 194   |           | 246   |          |
| C201778 |       | 8466      |       | 1940     |
|         | 31    |           | -11   |          |
| C201809 |       | 8455      |       | 1940     |
|         | 392   |           | 403   |          |
| C202201 |       | 8858      |       | 1940     |
|         | 182   |           | 151   |          |
| C202383 |       | 9009      |       | 1940     |
|         | 100   |           | 170   |          |
| C202483 |       | 9179      |       | 1940     |
|         | 266   |           | 257   |          |
| C202749 |       | 9436      |       | 1940     |
|         | 46    |           |       |          |
| C202795 |       | no number | -9    | no date  |
|         | 67    |           |       |          |
| C202862 |       | 9427      |       | 1940     |
|         | 219   |           | 383   |          |
| C203081 |       | 9810      |       | 1940     |
|         | 206   |           | -84   |          |
| C203287 |       | 9726      |       | 1940     |
|         | 107   |           | 240   |          |
| C203394 |       | 9966      |       | 1940     |
|         | 100   |           | 83    |          |
| C203494 |       | 10079     |       | 1940     |
|         | 296   |           | 403   |          |
| C203602 |       | 10482     |       | 1940     |
|         | 188   |           | -187  |          |
| C203790 |       | 10295     |       | 1940     |
|         | 70    |           | -69   |          |
| C203860 |       | 10226     |       | 1940     |
|         | 4     |           | -5    |          |
| C203864 |       | 10221     |       | 1940     |
|         | 307   |           | 910   |          |

|         |      |       |      |      |
|---------|------|-------|------|------|
| 71      |      | 11131 |      | 1940 |
|         | 385  |       | -348 |      |
| 4556    |      | 10783 |      | 1940 |
|         | 289  |       | 556  |      |
| C204845 |      | 11339 |      | 1940 |
|         | 25   |       | -83  |      |
| C204870 |      | 11309 |      | 1940 |
|         | 644  |       | 565  |      |
| C205514 |      | 11874 |      | 1940 |
|         | 366  |       | 408  |      |
| C205880 |      | 12282 |      | 1940 |
|         | 737  |       | 966  |      |
| C206617 |      | 13048 |      | 1940 |
|         | 200  |       | 222  |      |
| C206817 |      | 13270 |      | 1940 |
|         | 65   |       | -60  |      |
| C206882 |      | 13210 |      | 1940 |
|         | 536  |       | 634  |      |
| C207418 |      | 13844 |      | 1940 |
|         | 79   |       | -207 |      |
| C207339 |      | 13637 |      | 1940 |
|         | 1041 |       | 682  |      |
| C208380 |      | 14319 |      | 1940 |

Subtracting the highest from the lowest:

|            |              |        |       |
|------------|--------------|--------|-------|
| Highest    | Colt C208380 | Brazil | 14319 |
| Lowest     | Colt C190971 | Brazil | 953   |
| Difference | 17409        |        | 13366 |

Now taking the difference of the differences:

17409 Colt guns  
-13366 Brazilian guns  
= 4043 Non Brazilian Colt guns

This gives Brazil 76% of Colts production over the whole period. doing the same thing for the periods of the 1937 and 1940 contracts, this gives 91% and 88% of Colts output for these periods. The incremental differences between the Colt and Brazilian examples indicates that most but not all of Colts production went to Brasil between aproximately C190000 and C208000. Going by the difference in the deltas between the Colt and Brazilian numbers, Between the two contracts, (somewhere between C198500 and C201500) there was likely a group of as many as 2500 pistols which were commercial sales (as differentiated from the Brazilian contracts 1937 and 1940).

-----

This additional data seems to further corroborate the conclusions reached in the first article.

A slide of the last batch at Surplus Exchange has the Colt number C138447 with Brazilian number 7043, dated 1940. The usual Colt serial lists show this number to have been made in 1924, yet it was apparently included in the 1940 Brazilian contract. While this sounds like a complete anomaly, the slide/gun was probably a loaner/ demo gun which when returned, was reworked and shipped to Brazil. The Colt records would therefore probably show two shipping dates for this pistol. Other possible explanations include:

The pistol had been used at the Colt factory for some other purpose and with the war in the offing, they decided to get rid of it. I have seen records of individual pistols which were kept at

the factory in the possession of employees for many years, and when the employee retired the gun would be presented to them. Therefore there were guns at the factory which were out of numerical sequence. Any of these pistols could have been resurrected during a clean-up and could have been shipped.

The pistol may have been bought in 1924 by the Brazilians and then included in the marking/refinishing operation when someone found it in a drawer

The slide may not have matched the frame, or the pistol was a parts gun. And since the frame and slide are not together, this is pure conjecture.

Most people who have dug into Colts history have come across the axiom "Colt never threw anything away". If this is more or less true, there are all sorts of stories which would explain the "out of sequence" Brazilian pistol.

Note that it is spelled Brazil in English and Brasil in Spanish. The first article had the Spanish spelling because it was stamped on the slide.

#### John F. McAhon to the Membership:

Since Harold Anderson has announced the 1990 NAPCA convention, in the March issue of AM, I wish to announce that I will gladly host the convention in 1991.

Perhaps I owe an apology to Harold, and if so, please consider this as such. You see, I had charged off like a bull in a China closet and made arrangements to host this year's convention. Without at first knowing that Harold had already agreed to do same. I had the site laid on, and even had arrangements with American Airlines for greatly reduced airfares, before I found out that Harold had taken the annual onus upon himself. My apologies to you, Harold, for any inconvenience I may have caused.

At any rate, I would like to host the 1991 NAPCA convention. I have already begun plans for the event. Two of our members have become my staunchest supporters: Ralph Shattuck and Randall Gibson. I respectfully ask all of you to consider the 1991 convention spoken for.

#### To the Imperial-era P08/LP08 mavens:

Has anyone found concrete evidence that will support, or refute, the P08/LP08 same-series or different series mess. Has archival research turned up anything that may shed light on this matter? If the archives do not shed light on the matter, can we more diligently pursue data base searches, etc., to see what we can find?

In noting various figures of reported Erfurt pistols, both P08 and LP08, their survival rate seems to be about one quarter of DWM. Is this simply because the Erfurt has been overlooked, in favor of the DWM pistols? Or, have some of the estimates of Erfurt production given credit for greater production than there actually was? Figures I have seen range from a low of about 321,000 to more than 700,000. Where and how do we draw a realistic conclusion?

By the way, I'm looking for a 1911 dated Erfurt P08. Would you let me know if one becomes available in your areas? Must be all matched, and at least 90%. Address 4221 Redbud, Odessa, TX 79762. Phone 915/366-7899 (home) 1700-2100 hrs week nights and anytime on weekends, 915/335-3349 0600-1400 hrs. week days, Mon.-Fri.



TO KARL SCHAEFER FROM SCOTT MEADOWS: Your M1911 Colt, serial number 67504, was shipped on March 26, 1914 to the Adjutant General of New York, State Arsenal, 7th Ave. and 35th Street, New York, N.Y. The marking on the backstrap is a unit marking and stands for the 1st New York Cavalry, soldier number 49. All his other equipment would be likewise marked. Would be nice to find the original holster and belt so marked. The C-L marked magazine is from WWII and is not correct for the pistol. It should have a lanyard loop type. As to the shoulder stock cut, I feel it too is a later addition. In the first place the mainspring housing wasn't arched as this one is until 1924. Secondly, a number of M1911A1 type, arched mainspring housings were made up to be sold with the Lebanese imported stocks not very long ago. This may be one of those. Hope this is of interest.

TO KARL KARASH FROM SCOTT MEADOWS: Enjoyed your contribution regarding the early M1911A1 Colts. I would offer the following in response thereto:

1924 "Transitions" - I concur with your comments and my #706698 is typical of the later inspected pistols you describe. As a matter of interest, #708908 was reported with no inspection mark at all. I agree that the slides were not originally numbered and that the grips were the full checkered type which were authorized in 1923.

1937 - I believe, as you surmised, that all the 1937 production pistols have the "transition" markings. My specimen, #711024, has the large P but no H.

1938 - I believe the M1911A1 frame markings begin with the contract of 1938. My #713103 has the large P but no H.

1939 - My example, #716346, agrees with your data.

1940 - I agree with your data and also with your conclusion that all the 1940 produced pistols had walnut grips. My serial #721511 is CSR inspected and has the P proof. Serial number 717725 is also CSR inspected and lowers your range by 50 numbers.

1941 - My example, #733030 is RS inspected and has plastic grips which I am reasonably sure are original as the pistol came from the family. This would make the 730000 estimate pretty close. As you have noted, its a difficult call since grips are easily changed. Add to this that the factory records do not denote the type of grips at the time of shipment and that all parts were ultimately used up and in no particular order and you have a real dilemma. The change from blue to parkerized, which also occurred during this year, is also difficult to pin down to more than a range since there was, no doubt, overlap and pistols were often refinished. The points of change from one inspector to another generally agree with the data I have compiled from examination and input from other collectors.

Obviously, the stamped triggers in pistols 712118 and 712555 are not original to them as, as you have noted, they were not available until 1942. By the way, Ithaca came up with the design.

Hope the above is of interest. Thanks for the exchange. If you need any more data on any of my pistols, let me know.

TO THE MEMBERSHIP FROM BOB SEIJAS

A recent article in Gunweek by Charles Karwan and Mike Cunningham details a terrific method of reproducing gun markings for letters, articles etc. Better than rubbings or sketches for sure, and sometimes even better than photographs for ease of identification. It would be a great tool for the members when describing marks in AutoMag.

The tools required are a small aerosol can of Hoppe's Sight Black, and Scotch Tape (I find the old clear kind is stickier and works better than the opaque Magic Tape). Simply spray the sight black on the mark in a thin even coat, then lay a piece of tape smoothly over it. Rub with a smooth object like an old Pink Pearl eraser, and lift off the tape. You get a perfect negative of the mark as the tape picks up the carbon from the surrounding area but not from the crevices of the mark. Lay the tape on a piece of white paper and you can read the mark better than looking at the real thing. Xerox the negative if you want, or use more tape to fix it to the white paper. It shows every little line, even imperfections, and can be used on metal or wood. The sight black can simply be wiped off the gun after you are finished.



You guys who are arguing about what pistols Luftwaffe aircrew carried might be interested in this photo of P-47 pilot Dave Schilling and his homemade machine pistol. It's from a new book about Thunderbolt pilots in Europe called Zemke's Wolf Pack by Robert Freeman.



Dave Schilling with one of the many gadgets he liked to manufacture. This one was an Army Colt .45 pistol with extended ammunition clip and steadying handle to turn it into a machine pistol. It tended to spray bullets over the landscape and many a barrel was burned out.

To Ken Descovich from Peter Fitchen: Regarding P.38 serial numbers: both Walther (ac code) and Mauser (byf and SVW codes) at the beginning of each year started numbering with 1 continuing thru 9999, then reverted back to 1 with a suffix a (1a) on thru 9999a, then 1b thru 9999b, then c, then d, e. The following year, numbering would revert to 1 and proceed in similar fashion.

The main exception to this numbering system occurred at Mauser at the end of 1943 with the beginning of 1944 production. Numbering at the end of 1943 had reached the mid p suffix range and in 1944 continued on from that point. Fairly early in 1944, the alphabet was exhausted. Therefore, following 9999z, numbering began again at 1 and continued to the n suffix at the end of 1944. This is what is referred to as the second alphabet run. Obviously starting at p and ending at n did not cause any duplications and equally obviously, any gun with a p or higher suffix was an earlier P.38 than one with no suffix or an a thru n suffix. All of which means your P.38 was produced in the first week or two of 1944.

Still in his table on page 24 indicates an early q for the serial range of what he refers to as SUBVAR. 1 in which the style of the acceptance stamp is eagle o/ 135. Buxton referring to the byf44 code P.38, first alphabet run, first variation says "the serials for this variation did not revert back to 1 but continued with the 1943 sequence." (Buxton, Volume Two, page 23). He goes on to record the lowest known serial number as 5454p and the highest as 2949q (for the first alphabet run, first variation). Buxton's first alphabet run, first variation is essentially the same range of serial numbers as Still's SUBVAR. 1. Buxton goes on to define his byf44 first alphabet run, second variation as being those P.38s with some or all of the acceptance stamps in the new style of eagle o/ WaA135.

It appears therefore, that Buxton is correct (although Still is close) with regard to the serial range and, in fact, your P.38 reinforces that conclusion. Obviously, you will want to look next at all the acceptance stamps on your P.38. They should all be in the style eagle o/ 135.

Concerning serial numbers, Spreewerke (cyq and cvq codes) started numbering with 1 and continued on to 9999z without regard to year, then returned to a1 (prefix) on to a9999, then b1 thru b9999, etc. Therefore, the same serial number could conceivably occur in 1940, 41, 42, 43 and 45 for Walther, in 1942 (questionably), 43, 44, and 45 for Mauser and once for Spreewerke or on as many as ten different P.38s. Because of this problem, to effectively define any particular P.38 you must use the manufacturer's code, the year code (except with Spreewerke) and the "serial number". The serial number on your P.38 is then byf44 7320p.

Your second question is a good deal easier to answer although it poses a question in itself. As to the serial numbering of magazines, every expert source I know of agrees that Walther was the only manufacturer of P.38s that ever factory stamped serial numbers on their magazines and even they ceased this practice sometime in mid 1942. This was before production even started at Mauser (late 1942 or early 1943) and Spreewerke (early in 1943). Matching the magazines to the guns serial numbers never really made much sense since every P.38 magazine fits every P.38 anyway. The primary result of this practice is to vex serious collectors who have a supernice early Walther original and matching in every respect except the magazine serial number. (Witness my ad under "Wanted" in this issue).

Finally, the question your letter poses is how does a magazine produced by Erste Nordboehmische Metallwarenfabrik (commonly referred to as JVD) in Czechoslovakia under contract to Mauser and Spreewerke end up with a factory stamped serial number? Obviously, someone has substituted a Walther produced serial numbered magazine base plate on to a JVD acceptance stamped magazine barrel.

## LUFTWAFFE DROPPING HOLSTERS

John P. Pearson

I would like to summarize some observations concerning dropping style holsters made for various Nazi era pocket pistols. The first patterns for such holsters were probably the ones made for the Walther PP & PPK pistols by Akah, and marked on the back with a large Akah trademark and "Theurmann D.R.P. 695930". The PPK examples observed are black with black stitching, while the PP versions are brown. These Theurmann examples have slide straps riveted inside the top cover, so straps are not present on the outside of the top flap. I have never observed one of these with Luftwaffe type acceptance marks, so possibly they were a commercial item or done as a pattern for the Luftwaffe. Does anyone know when this patent was issued?

All of the remaining dropping style holsters observed have exposed straps on the outside of the top flap, and they are all in brown leather. They were made for the Browning Model 1922, the Walther PP & PPK, the Femaru Model 37 and the Mauser HSc. Has anyone observed such a holster for any other pistol models? They are always found with ink stampings inside the top flap to indicate the pistol model. They also apparently always are marked with some pattern of the Luftwaffe Acceptance stamp, either in ink inside the top flap or stamped into the leather inside the top flap, on the front of the top flap, or on the rear on the belt loop assembly. Various patterns of the Luftwaffe Acceptance stamp are observed, with an Eagle over the numbers 2 or 7 being the most common.

Although these dropping holsters are all similar, there are various makers and each used slight variations in the design. I will summarize the makers and comment on differences.

1. Georg A. Lerch, GmbH Berlin, Code hck. Only observed with 41 date. These holsters have the straps sewn and riveted to the top side of the front of the top flap. hck marked holsters have been observed for the PP and PPK only.
2. Kern, Kläger & Cie, Berlin, Code cdc. Only observed with 43 date. These have the straps sewn inside the top flap and they bend over the edge from the inside and continue over the top to the rear. They use no rivets on the straps. cdc marked holsters have been observed for the Femaru, HSc and Browning 1922.
3. Gustav Reinhardt, Code jsd. This marking is only reported on a PP holster dated 1943. Again, the top straps are sewn and riveted to the top side of the front of the top flap.
4. Other makers observed only on Browning Model 1922 holsters:
  - a) Large HK Anchor (Krieghoff) trademark stamped on rear belt loop assembly with the body, mag pouch and belt loop made of ersatz leather. These are not dated but are assumed to be late production. The Eagle 2 Acceptance mark is stamped into the front of the leather top flap.
  - b) Code jhg 43 (Gustav Genschow & Co.). These have straps folded over and riveted inside the top flap. The closure strap also has a rounded, reinforced end rather than the normal squared off reinforced end found on the other makes.



- c) In my collection is a Browning Model holster with straps folded over and sewn inside the top flap like the cdc models. No markings are on the rear belt loop. Stamped into the underside of the top flap is a small Eagle 2 and a circular maker trade-mark about 1/4 inch in diameter, shown here twice size. Does anyone know the maker for this marking?
- d) A theurmann marked Model 1922 pattern is reported but it has been modified to remove the dropping straps. It is marked on the rear belt loop "D.R.P. 69535 ". I have never observed a complete example.

Another unusual Luftwaffe pattern holster is the web and leather model made only for the Femaru M37. These are only found with the 1941 date, and are found marked Gustav Reinhardt Berlin or the codes hsy (Franz Cobau), cdc and jsd (Reinhardt's code). These are all found with the Luftwaffe Eagle 7 Acceptance mark. For the 1943 date, Femaru holsters in the dropping style are found only with the cdc code, indicating the web model was apparently abandoned for the dropping pattern. The web material suggests use in the tropical or desert regions. Why the web design only for the Femaru, when the dropping pattern was available in 1941 for the Browning 1922, PP and PPK?

All of these dropping holsters were apparently used by the Luftwaffe. What is unusual is that they are brown, when the Luftwaffe supposedly issued orders for black leather (holsters, belts, etc.) by 1941. Also, were these holsters intended only for flight crews/pilots etc, or did all Luftwaffe troupes carry this holster pattern? (see Still's Axis Pistols, page 138). I would be interested in comments from members concerning other makers or pistol variations, and any evidence of the use of these holsters within the Luftwaffe.

To John F. McAhon from Joachim Görtz

on "SNEAK SIMSONS" (AUTO MAG March 1990, p. 282)

It is correct that the Reichswehr ministry ordered the fluting of firing pins of P.08s on 17 September 1930, and I still believe that new weapons acquired after this date were furnished with fluted pins. I would however think it is dangerous to draw any conclusions from the a/m Reichswehr directive with regard to pistols bought (from Simson & Co.) before 17 September 1930. It is easily possible that the directive, while pertaining to existing weapons only, sanctioned a practice having been applied to newly manufactured pistols for the last five years ... In other words, it is possible that all Simson-made P.08s were furnished with fluted firing pins from the very beginning of Simson production, and that corresponding alteration of pistols in the Reichswehr inventory was ordered only several years later. - By the way, the police directive corresponding to the a/m Reichswehr directive was issued in May 1932; in April 1935 the alteration of police pistols was not yet completed. - For your records: I own a Simson-made P.08, serial number 6399, chamber not dated, firing pin fluted (obviously hand-made), rear connecting pin marked ".99" in compliance with the Reichswehr directive of 3 March 1932. My book on the "Pistole 08" refers (p.119 and p. 170).

TO MIKE KOSLANDISH FROM ERNIE LANG Article on Gustloff in 1986, GUN DIGEST, by Dr. Bruno Brukner. I have seen the manual in color, dated 4/43, on the Gustloff pistol.

\* Some help in identifying marks on Ruby pistols: A - Arizaga, A.; AE - Errasti, A.; AL - Aldasabal, Y.; BH - Beistegui, Hnos; HE - Echeverra, H.; LC - Grand Precision (on grips); AA - Azanza, Y. These all came from DWJ.

TO BOB WHITTINGTON FROM JOHN PEARSON In your recently published Volume II (page 37), you show the 20.10.1941 invoice from Walther to the Luftwaffe concerning the delivery of two P38s and one PPK. You concluded the P38s were ac4ls in the 'h' block. Notice that on the invoice, P38 #3090 is indicated "mit Leichtmetallgriff" which is a reference to a dural frame. I would thus suspect that this was an experimental pistol or a dural frame HP (although it would then fall into the .30 caliber range, not the dural frame HP range of 6800 to 6900). These P38s would definitely not be standard production P38s in such a delivery. Concerning the PPK, note that it was delivered with a bright brown "anuschat" pattern holster, which is the standard AKAH style with the side flap and top cover. Maybe one of our German members can read the handwritten comments on this invoice. Based on the PPK serial number of 270240, it would definitely be one of the first to be issued to the military (Still recorded 270100K as the lowest E/359 marked). Do you feel that the military purchased some PPKs which were Not WaA accepted? \* I recently observed a PPK, #174523K, c/N, high polish, with police E/L proof on frame, below mag button. This proof looks to have been applied under the blue and looks original. There are no known E/L Walthers. There were some E/c PPKs just before this time, in the one-million range. One observation: the eagle portion of this proof has a definite swastika in circle below it. Normally, these police eagles have an 'x' showing in the circle, not such a definite swastika. The gun was purchased with no premium for the proof. I am interested in opinions from other Walther collectors. Could this be like the early police E/F Sauer 38Hs - only a small batch mixed in with the E/c's?

TO MIKE ROBERTS The 'bearskin' mark on your '43 P38 holster, is for the firm AKAH (Albrecht Kind). Apparently they were allowed to use this trademark pattern rather than the normal three character alpha code. I am not aware of them ever having a code.

JOHN SLOAN STOLEN - Walther PPK, .32, black grip, flat mag, WaA359, #373935K. If anyone has any information on this pistol, please call 615-926-8646, collect.

BARRY PRINGLE The tool shown on page 273 of the 3/90 issue, is for the Swedish Nagant, 7.5mm, M1887 revolver. The crown/c marking is the same as found on Swedish M96 bayonets and muzzle covers and indicates manufacture at the government rifle factory.

TO GENE GANGAROSA, FRANK OWENS, et al FROM BOB NAGEL Thanks for the info on the DA FN HP. Frank, if you hear of that importer bringing in some of these, please let me know. I do have another question for you guys: How many stainless HPs were produced? A local shop had a stainless steel HP, but sold it before I could get a chance to see it. They said it had an engraved slide, a gold looking trigger, fixed sights, and that sort of all safties like on the old blued HPs. Possibly was it one of those commemorative HPs that Browning offered a few years back? TO FRANK OWENS Fro the Bren mag you are looking for, contact: Scherer, POB 250, Ewing, Va. 24248 615-733-2615. I understand they only have used 10mm mags (the heat treated ones) in blue finish. The last price I have on them is... you better sit down at this point...\$125. Also, their brochure indicates they have individual parts for the mags.

TO LEN ANTARIS FROM GEORGE WINAT Astra 900, 26090, E code dated.

PAUL BRADFORD Observed cone hammer Broom, #13994.

BOB STUDELSKA Observed - '43 Krieghoff #11716 & '40 Krieghoff #11219

IM BALIOU I am still collecting Singer serial numbers...any new ones turn up recently? Only twenty so far.

JACK VALENTI I am still looking for serial numbers of Dreyse 9mm pistols. Only had one response, and it is consecutive to mine. I know there are more than two of them in circulation. Also, I am desperately looking for an original mag for my pistol...anyone have a spare they would like to part with?

TO AL HOFFMEYER Thanks for the picture, sorry I have not corresponded directly. I don't think we will make the Teddy bear show this year...well, the little woman HAS to collect something too.

WALTER GOODRICH I recently purchased a P38 mag marked P.38v over ac w/E359. I can't find this marking listed in any of my books (don't have Buxton as yet) and everyone asked offers a different answer. Can someone tell me when these mags were produced and/or which P38 variations they match?

TO GENE MEDLIN & DAVE FRANCHI FROM HOWARD CROUSE My SACM 35A, E/655, #B80xA, has serial and WaA on left side of frame only - nothing on barrel or inside of slide.

\* Have in my collection, Star B #21525x, WaA251, B548; PPK, RZM, #82077x; Sauer 38H, E/F, #27875x. The latter two were purchased directly from the vet who 'procured' them from the home of Wilhelm Grimm in Munich. Grimm was a Reichleiter as well as a general in the SS. I have the supporting documentation.

JOHN LITTLE As I reported in Volume XXI, #12, a Mauser without serial number and W. Hille engraved on the side plate. I had the piece at the OGCA show in May. Only one collector made comment on it - Harold Anderson. I, like the rest, did not buy it, I just did some research for a local collector who had no interest in Mausers. After the piece was sold, I was still intrigued by the unknown, so after some help from the local librarian, I got a copy of a page from FUHRERLEXIKON. The page was for Hille, Walter, Polizeprasident. The book only covered events up to 1935. At a show last week I was told W. Hille was CEO of BMW in 1944. This piece was bought by a collector who knew what it was and it is now in his collection - win some, lose some...

To John McAhon from Don Secret: After reading your article (Mar90) in Auto Mag re:"Sneak Simpsons" I re-examined my Blank Chamber Simpson serial #9032. Right receiver marked as per "Costanzo p.299-illustration #233". The front grip strap is marked "A.S. 532.". The firing pin appears to be "factory original manufacture" and has a Simpson "Eagle/6" proof mark along with the last two digits of the serial #.

I then examined some reworked DWM & Erfurt WWI lugers and found grind marks on all of these firing pins. These reworked firing pins appear to have had the flutes "cut" into them and then lightly smoothed by turning on a lathe. Under magnification you can see that the edges of the "Proof " and "Serial #" marks show evidence of "buffing" which would seem to indicate reworking of a previously serial #ed and/or proofed firing pin. The Erfurt firing pins were marked with a crown over script letter and the last 2 serial # digits while the DWM firing pins were marked only with the last 2 serial # digits.

Looking back at my Blank Chamber Simpson, the Eagle/6 proof and serial #'s on the firing pin have very sharp and crisp edges. My Imperial WWI lugers with unfluted firing pins have these same sharp and crisp markings. This would seem to substantiate your theory that the Blank Chamber Simpson Lugers were originally fitted with "fluted" firing pins at the factory.

I have always assumed that the grip strap markings ( A.S. 532.) meant "Artillery School" gun #532, do you or the membership have any thought's on this?

TO MIKE KOSLANDISH FROM ERNIE LANG Article on Gustloff in 1986, GUN DIGEST, by Dr. Bruno Brukner. I have seen the manual in color, dated 4/43, on the Gustloff pistol.

\* Some help in identifying marks on Ruby pistols: A - Arizaga, A.; AE - Errasti, A.; AL - Aldasabal, Y.; BH - Beistegui, Hnos; HE - Echeverra, H.; LC - Grand Precision (on grips); AA - Azanza, Y. These all came from DWJ.

TO BOB WHITTINGTON FROM JOHN PEARSON In your recently published Volume II (page 37), you show the 20.10.1941 invoice from Walther to the Luftwaffe concerning the delivery of two P38s and one PPK. You concluded the P38s were ac41s in the 'h' block. Notice that on the invoice, P38 #3090 is indicated "mit Leichtmetallgriff" which is a reference to a dural frame. I would thus suspect that this was an experimental pistol or a dural frame HP (although it would then fall into the .30 caliber range, not the dural frame HP range of 6800 to 6900). These P38s would definitely not be standard production P38s in such a delivery. Concerning the PPK, note that it was delivered with a bright brown "anuschat" pattern holster, which is the standard AKAH style with the side flap and top cover. Maybe one of our German members can read the handwritten comments on this invoice. Based on the PPK serial number of 270240, it would definitely be one of the first to be issued to the military (Still recorded 270100K as the lowest E/359 marked). Do you feel that the military purchased some PPKs which were Not WaA accepted?

\* I recently observed a PPK, #174523K, c/N, high polish, with police E/L proof on frame, below mag button. This proof looks to have been applied under the blue and looks original. There are no known E/L Walthers. There were some E/c PPKs just before this time, in the one-million range. One observation: the eagle portion of this proof has a definite swastika in circle below it. Normally, these police eagles have an 'x' showing in the circle, not such a definite swastika. The gun was purchased with no premium for the proof. I am interested in opinions from other Walther collectors. Could this be like the early police E/F Sauer 38Hs - only a small batch mixed in with the E/c's?

TO MIKE ROBERTS The 'bearskin' mark on your '43 P38 holster, is for the firm AKAH (Albrecht Kind). Apparently they were allowed to use this trademark pattern rather than the normal three character alpha code. I am not aware of them ever having a code.

JOHN SLOAN STOLEN - Walther PPK, .32, black grip, flat mag, WaA359, #373935K. If anyone has any information on this pistol, please call 615-926-8646, collect.

BARRY PRINGLE The tool shown on page 273 of the 3/90 issue, is for the Swedish Nagant, 7.5mm, M1887 revolver. The crown/c marking is the same as found on Swedish M96 bayonets and muzzle covers and indicates manufacture at the government rifle factory.

TO GENE GANGAROSA, FRANK OWENS, et al FROM BOB NAGEL Thanks for the info on the DA FN HP. Frank, if you hear of that importer bringing in some of these, please let me know. I do have another question for you guys: How many stainless HPs were produced? A local shop had a stainless steel HP, but sold it before I could get a chance to see it. They said it had an engraved slide, a gold looking trigger, fixed sights, and that sort of all safties like on the old blued HPs. Possibly was it one of those commemorative HPs that Browning offered a few years back?

TO FRANK OWENS Fro the Bren mag you are looking for, contact: Scherer, POB 250, Ewing, Va. 24248 615-733-2615. I understand they only have used 10mm mags (the heat treated ones) in blue finish. The last price I have on them is... you better sit down at this point...\$125. Also, their brochure indicates they have individual parts for the mags.

TO LEN ANTARIS FROM GEORGE WINAT Astra 900, 26090, E code dated.

PAUL BRADFORD Observed cone hammer Broom, #13994.

BOB STUDELSKA Observed - '43 Krieghoff #11716 & '40 Krieghoff #11219



AM BALLOU I am still collecting Singer serial numbers...any new ones turn up recently? Only twenty so far.

JACK VALENTI I am still looking for serial numbers of Dreyse 9mm pistols. Only had one response, and it is consecutive to mine. I know there are more than two of them in circulation. Also, I am desperately looking for an original mag for my pistol...anyone have a spare they would like to part with?

TO AL HOFFMEYER Thanks for the picture, sorry I have not corresponded directly. I don't think we will make the Teddy bear show this year...well, the little woman HAS to collect something too.

WALTER GOODRICH I recently purchased a P38 mag marked P.38v over ac w/E359. I can't find this marking listed in any of my books (don't have Buxton as yet) and everyone asked offers a different answer. Can someone tell me when these mags were produced and/or which P38 variations they match?

TO GENE MEDLIN & DAVE FRANCHI FROM HOWARD CROUSE My SACM 35A, E/655, #B80xA, has serial and Waa on left side of frame only - nothing on barrel or inside of slide.

\* Have in my collection, Star B #21525x, Waa251, B548; PPK, RZM, #82077x; Sauer 38H, E/F, #27875x. The latter two were purchased directly from the vet who 'procured' them from the home of Wilhelm Grimm in Munich. Grimm was a Reichleiter as well as a general in the SS. I have the supporting documentation.

JOHN LITTLE As I reported in Volume XXI, #12, a Mauser without serial number and W. Hille engraved on the side plate. I had the piece at the OGCA show in May. Only one collector made comment on it - Harold Anderson. I, like the rest, did not buy it, I just did some research for a local collector who had no interest in Mausers. After the piece was sold, I was still intrigued by the unknown, so after some help from the local librarian, I got a copy of a page from FUHRERLEXIKON. The page was for Hille, Walter, Polizeprasident. The book only covered events up to 1935. At a show last week I was told W. Hille was CEO of BMW in 1944. This piece was bought by a collector who knew what it was and it is now in his collection - win some, lose some...

To John McAhon from Don Secrest: After reading your article (Mar90) in Auto Mag re:"Sneak Simpsons" I re-examined my Blank Chamber Simpson serial #9032. Right receiver marked as per "Costanzo p.299-illustration #233". The front grip strap is marked "A.S. 532.". The firing pin appears to be "factory original manufacture" and has a Simpson "Eagle/6" proof mark along with the last two digits of the serial #.

I then examined some reworked DWM & Erfurt WWI lugers and found grind marks on all of these firing pins. These reworked firing pins appear to have had the flutes "cut" into them and then lightly smoothed by turning on a lathe. Under magnification you can see that the edges of the "Proof " and "Serial #" marks show evidence of "buffing" which would seem to indicate reworking of a previously serial #ed and/or proofed firing pin. The Erfurt firing pins were marked with a crown over script letter and the last 2 serial # digits while the DWM firing pins were marked only with the last 2 serial # digits.

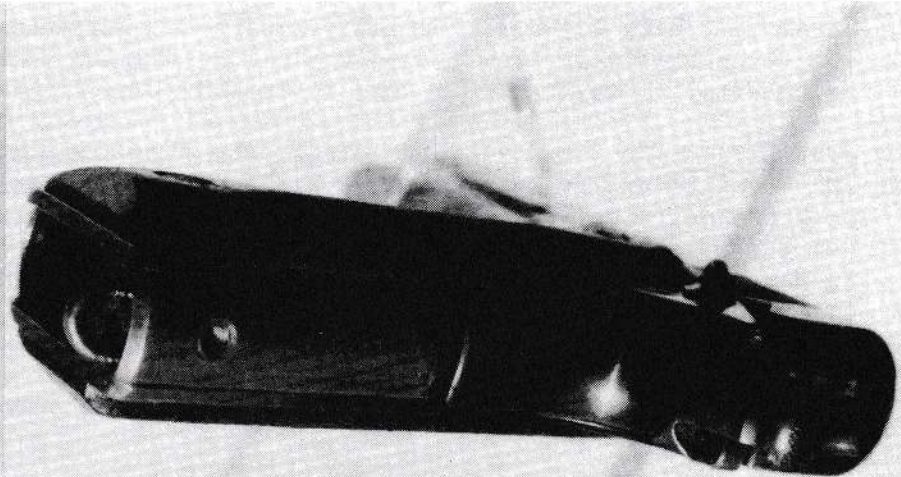
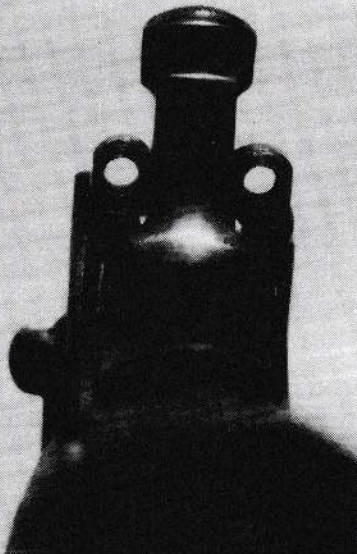
Looking back at my Blank Chamber Simpson, the Eagle/6 proof and serial #'s on the firing pin have very sharp and crisp edges. My Imperial WWI lugers with unfluted firing pins have these same sharp and crisp markings. This would seem to substantiate your theory that the Blank Chamber Simpson Lugers were originally fitted with "fluted" firing pins at the factory.

I have always assumed that the grip strap markings ( A.S. 532.) meant "Artillery School" gun #532, do you or the membership have any thought's on this?

TO STEVE DAVIS FROM KARL SCHAEFER : The production figures mentioned in AUTO MAG, issue nov 89, for Roth-Steyr M 07 pistols are compiled from financial factory records. I have no idea how this data can be related to your estimated production figures reported by year of acceptance which, by the way, make sense to me. In comparing, however, your estimated total Steyr production of 59.500 pistols M 07 with my reported total deliveries of 58.336 pistols M 07, this seems to be not a bad conformity.

TO DOM CREWS : Sorry Don, no serial number records found on 1905 Argentinian Mannlichers.

TO MEMBERSHIP : Recently saw Commercial Colt 1911, Ser Nr C 25741 modified on main spring housing and grip spur for the attachment of a shoulder stock or a shoulder stock holster (see photos). Original ?



To: Doug Coffey from Elliot Tokson I have a 1930 Commercial Broom #917140 (step barrel). I, too, would like some information on Ortgies. I have a mint .25 (in box) #88000 (some number!) and a nice .32 #76486 and a seldom seen .380 #70248. (Doesn't it sound as though all calibers were numbered together?) You might be interested to know that Gary James of Guns and Ammo once remarked that the Ortgies is one of the finest pocket autos ever made and is one of his favorites. For those of you who may not know this, the Orgies has a grip safety ~~et~~ which, when squeezed, retracts the firing pin to increase the tension on the firing pin spring to insure a solid strike on the primer without keeping the spring fully under tension when carrying the weapon loaded. (Shades of the Glock and Roth Steyr!) By the way does anyone out there know whether in the Glock pistol the firing pin spring when under partial tension (as it is when cocked) would have enough power to fire the cartridge if by some freak accident the sear should fail?

To Bailey Brower Re: treatment for fragile leather. In a recent Auto Mag someone highly recommended a product created by the British Museum to preserve their precious leather bound books. The company that carries the product is Talas, 213 W 35th St. NY, NY. (212 736 7744) They offer leather protector and leather dressing. I bought some and used them on a few holsters. In about fifty years I'll be able to tell you if they work. In their brochure they recommend for dry powdery leather a spray Krylon 1301.

BOB STUDELSKA Just purchased a couple of items that I need to ask your help on. One item is a P08 double mag pouch, but I'm not sure if it is German or U.S. The hallmark reads J. F. Kahle with a circled 'SD' below the 'J' and above the 'e'. Each side of the flap has an individual closure snap. The mag that came with a 1906 navy commercial Luger (64375), has the proof found on DWMs (in the well) which is often mistaken for the flaming bomb. This is the first time I've ever seen it on a mag - is it common to naval commercials?

TO LEN GUMOWITZ, BRUCE BYDAL & JON CLEMONS FROM LEN ANTARIS Thanks to all of you for your translations of the Astra blue 'recipe' - Tom forwarded these directly.

TO ERNIE LANG FROM RICK BARR Last summer, at the NAPCA convention, I got a W&S .38 High Velocity missing the mag...you might remember it. Well, I've advertised for a mag and written every source I know with no luck. Do you know any sources in Great Britain or Europe who might lead me to one?: POB 2335, Universal City, Tx. 78148

TO KARL KARASH FROM CHRIS SHANAHAN Thanks for the recent articles on 1911A1 pistols - very informative and much needed as there is so little published on these "just barely pre-wars".

TO SCOTT MEADOWS & JOHNNY PEPPERS I read with great interest, your replies to Ken Hogan on Colt .45 auto barrels, but does this apply to earlier civilian government models as well? I have a Colt commercial Gov't model made in 1932, that does not have the 'Colt .45 Auto' marking. It has a small 'c' in front of the lug. Naturally, I suspect the barrels originality, but the machining and blue is identical to other 'Colt .45' marked barrels.

PAUL BRAMMER Can anyone out there help me with the current whereabouts of gunsmith Walter (Bill) Goesch? In early '86, he was located in Platt Center, Nebraska: POB 8485, Kansas City, Mo. 64114

TO DAVE FRANCHI FROM GENE MEDLIN Re your inquiry in the March issue about the 35A, #B815, E/655. It is correct for the E/655 pistols to have their barrels also stamped with the WaA. When the acceptance mark changed to WaA251, the regular E/swastika came into use. Serials were added to the interior of slides and barrels in later production.

TO KARL SCHAEFER Thank you for the remarks about the Swedish Lahti marks - it explained some on mine that puzzled me.

\* I need information (serials/descriptions) of French Lugers, that is, those assembled, marked and used by the French when they occupied the Mauser plant in 1945/46. Jean Huon shows one in his book on French military auto pistols which is an LPO8!

TO MIKE VOLK PLEASE get in touch with me ASAP: 100 Golden Barrel, El Paso, Tx. 79927

TO THE MEMBERSHIP FROM ORV REICHERT

Reporting 2 P.38s....SVW46 #301-L. SN on the frame, barrel, and slide in the usual places..plus on the bottom of the grip overhang. No proofs/stars/WaA of any type. the gun is new in the Interarms box. Made up from new parts..highly buffed but not 'rounded'. the barrel (L) has the little 'RW' stamps as described on page 46 of Buxton's Vol-2 (Col-2 middle)

Another #307-L..identical to above except the grip overhang SN is missing...there are slight indentations to indicate an attempt might have been made and then removed..both have steel grips

Interesting guns!

Remember...send me P38 SNs with a brief description for my Data Base!!!!

BOB DALE I came across two manufacturers codes (on MG 34s) which I cannot find in any of my reference books - cra & pem. Can anyone ID these for me?

TO FRANK OWENS FROM WALT PERRY In '85 or so, Federal Ordnance was selling a lot of the light alloy .45 auto frames in both Commander and Gov't model lengths. All were marked RMT, etc., under the right grip. The Commander length frame included a special recoil spring to try to prevent damage to the alloy frames. The RMT, etc., stood for Ranger Machine & Tool, which I believe may have been a manufacturing 'arm' for Fed Ord. These light alloy frames appear to have been used, basically, in the assembly of 'parts box' Commanders and Gov't models.

JAMES HELLYER Observed - Colt 1902, .38, #13233; Steyr 1912, #65135; Dreyse, .32, #177566.

\* A local shop recently received 140 used .45 pistols. These seem to be a mix of two types. One has the Argentine crest & logo on the right slide, with Colt logo on the left. The other type has crest and a slightly different Argentine logo on the right, and the left slide has DGFM - (FMAD). The DGFM has serial on the right side, applied by dremel. The others have the serial on top, behind the ejection port, and repeated on barrel, right slide & frame, but in script. These are called the M1927. All the Colt marked specimens have 'CAIST. ALB. VT' on the lower trigger guard flat underside. Mags are all numbered to the pistols. Rumor has it that these were captured during the Falkland Island encounter.

To the Readership from Mike Duffy.

1. What is the lowest SN known for a .45 Colt National Match? Recently observed SN C163540.

2. Regarding 1911 A1 Wartime Barrels: I believe the following to be true. Wartime Barrels were produced under the direction of the War Production Board (WPB). There were only three manufacturers, High Standard (HS), Flannery Bolt Co. (F), and Springfield Armory (S). By far, the greatest production was High Standard, including replacement barrels. There was no pattern regarding which pistol contractor used which barrel. They were simply allocated according to availability, and all three manufacturers may likely be found in the same contract.

TO HARRY McTAGUE FROM AL WINTER - Re stuck plunger on Luger sear bar: First, with the cross pin out, soak assembly in "Liquid Wrench" available in most hardware stores (may take several days of soaking). Put unit in a glass jar with a lid to keep the liquid wrench from evaporating. Reinstall cross pin and tap on plunger with a block of wood or a plastic hammer. Do not use excessive force. You are trying to break up an internal rust problem. Do not try to break the plunger loose with the cross pin removed because the unit can fly apart and the spring and plunger could be lost. Once it comes apart, polish the plunger and the hole in the sear bar with 400 grit wet/dry paper. You may have to replace the spring and/or the plunger. Good Luck, it worked for me.

FROM TOM KNOX I recently received a non-member inquiry concerning a 9mm GL Luger carbine, that formally was in the collection of a Mr. Dan Daniels, who is now deceased. At various times, Mr. Daniels lived in Columbus, Oh., Silver Springs, Md. and Phoenix. I would normally pass such non-member inquiries along to one of the members (if I can't handle it myself), but I'm just not sure who our resident expert is on GL Lugers. If you want to respond to this one, let me know.

o Robert E. O'Connor, Jim Hellyer, and the membership:

Many thanks to Robert and Jim for their recent Erfurt information. As most of you are aware by now, my interests lie in the Erfurt P08/LP08. The following information will be greatly appreciated, regarding the Erfurts: chamber dates with serial numbers, and of course whether P08 or LP08. On the 1913 and earlier models, whether with or without hold open, or retrofitted. On the 1916 and earlier, whether with long or short sear bar. On the 1913 and 1914 dated P08's, whether with or without stock lug.

If anyone has Erfurt data base information, or observes Erfurts where ever, please make a note and share your findings with me. Whether dealer and/or collector, could you please check your current and past inventories for this information.

To Joachim Görtz, Reinhard Kornmayer, Don Rousseau, David Ginsberg and the Imperial era P08 guys:

For some time I have read reference to, and seen examples of, P08 and LP08 barrels with the Erfurt "heraldischer Adler" mounted on DWM manufactured receivers. In reading Herr Görtz' book "Die Pistole 08" the section on Die Vorschrift für die Stempelung die Pistole 08, it would seem that these Erfurt proofed barrels don't belong on the DWM guns.

If my understanding of this document is correct, as shown on pages 86 and 89 of Herr Görtz' book, the "heraldischer Adler" was not applied until after the proof firing of the complete weapon. If this is correct, where and/or when did they mate the Erfurt barrel with the DWM receiver? Was gibts?

To Doug Coffey:

Many thanks for the response, and accompanying serial number data base, to my "Sneak Simsons" submission. I am overwhelmed by your kindness, generosity and thoughtfulness, and deeply thankful for the information.

Observed

At a recent show in Sweetwater: CZ38, Serial #261200, E/L at the left rear of the trigger guard, E7 lion 39. Piece was in a black holster, ink-stamped inside the flap P39(t), maker marked cny 41, WaA14.

Astra Modelo 1921, spanish crest in front of the Astra logo on the front of the barrel housing, full rig, Ser. #11594. Also saw, and available locally, a brown full-flap holster, stud and slit closure, marked "Auto and Burglar Gun made by Ithaca Gun Co. Ithaca N.Y. The markings were in three lines on the flap of the holster.

To the membership

Does anyone know who may be making replacement lift straps for the P08 holsters? I can't seem to get the !##\*\*&%\$ T-knot in the exposed end of the thing, when I have to replace one! Also, please add the following to me wants from the last issue: individual WW1 rounds in 9mm, preferably Erfurt, but am looking for many different headstamps, and need at least one sealed box of WW1 issue ammo, again preferably Erfurt.

From Colin Doane about Rubys: Here's a list of makers of the Ruby type pistols, taken from the French book *Le Star et Le Ruby*. I remember fellow NAPCA member Jean Huon publishing a somewhat more extensive and possibly more accurate list, but I can't lay hands on it now. Possibly M. Huon would share his information with us. The letter markings for the magazines can be inferred from the makers' names. Later, for insurance, France serial numbered the magazines to match the pistols. It is quite possible that the Centre d'Archives de l'Armement has the official list of what letters go with what makers. They once indicated to me they had a lot of material on the Ruby. If anyone wants to query them, the address is 211 Grande Rue de Châteauneuf, BP # 650, 86106 Châtellerault Cedex, France. Better write in French.

Domingo Acha y Cia, Ermua.  
Jose Adalzabal, Eibar, made Imperial.  
Aguirre Zamacolas y Cia, Eibar, made Basculant and Dragon.  
Aldazabal y Leturando, Eibar.  
Alkartazuma, Guernica, made Alkar.  
Apaolozo Hermanos, Zumonago, made Paramount.  
Gaspar Arizaga, Eibar, made Mondial and Warwinck.  
Arizmendi y Goenaga, Eibar, made Singer and Boltam.  
Arizmendi Zulaica y Cia, Eibar, made Cebra.  
Armero Especialistas Reunidas, Eibar, made Omega.  
Armeria Elgoibaresta, Elgoibar, made Lusitania.  
Hijos de Calisto Arrizabalaga, Eibar, made Campeon.  
Eulogio Arostegui, Eibar, made EA and Azul.  
Azanza & Arrizabalaga, Eibar, made AA and Reims.  
Antonio Azpiro, Eibar, made Avon and Colon.  
Martin Bascaran, Eibar, made Martian and Thunder.  
Beistegui Hermanos, Eibar.  
Berasaluzze Areito Aurena y Cia, Eibar, made Allies.  
Vincenzo Bernedo y Cia, Eibar, made BC.  
Victor Bernerdo y Cia, Eibar.  
Gregorio Bolumburu, Eibar, made Bristol, Giralda, Gloria, Regina and Rex.  
Cooperative Obrera, Eibar, made Longines.  
Echasa y Arizmendi, Eibar, made Bronco, Ea and Selecta.  
Bonifacio Echeverria, Eibar, made Izarra.  
A. Echeverria, Eibar, made Vesta.  
Echealaza y Vincinai y Cia, Eibar.  
Hijos de A Echeverria, Eibar.  
Erquiaga Maguruza y Cia, Eibar.  
Erquiaga y Cia, Elgoibar, made Fiel.  
A Errasti, Eibar.  
Esperanza y Unceta, Guernica, made Astra and Victoria.  
Fabrique d'Armes de Guerre de Grande Precision, Eibar, made Libia.  
Gabilondo y Cia, Eibar, made Ruby.  
Garate y Anitua, Eibar, made Express, Danton.  
Garate Hermanos, Ermua, made Cantabria.  
Isidro Gaztanaga, Eibar, made Indien.  
Iraola y Salaverria, Eibar.  
Manufacturas de Armas de Fuego, Guernica, made Alkar.  
Ojanguren y Vidoso, Eibar, made Apavhe and Crucero.  
Orbea Hermanos, Eibar, made La Industrial.  
Retolazo Hermanos, Eibar, made Liberty and Paramount.  
Ruby Arms Co, Elgoibar et Guernica.  
San Martin y Cia, Elgoibar, made Vencendor.  
Ouvriers Reunis, Eibar, made Action.  
Santos Modesto, Eibar.  
Societa Espagnola de Armas y Municiones, Eibar, made Praga and Sdlesia.  
Thieme & Edeler, Eibar.  
Tomas de Urizar y Cia, Eibar, made Princeps.  
M Zulacia y Cia, Eibar, made Vinvitor and Royal.

PISTOL ISSUE IN THE NAZI ARMED FORCES  
Translated By Bob Whittington  
PART IV

STAFF AND STAFF COMPANY, MACHINE GUN BATTALIONS-MOTORIZED(1944)

Army(Heer) and Waffen-SS TO&E number 120 for a Staff and Staff Company, Machine Gun Battalions-Motorized(Stab und Stabskompanie Maschinengewehrbataillons-mot), dated 1 May 1944, lists an authorization of 10 officers, 3 civilians, 32 NCOs, and 156 men. Forty-seven issue pistols were authorized-nine in the staff for the battalion commander, adjutant, administrative officer, medical officer(surgeon), auxilliary surgeon, battalion motor officer, assistant motor officer, telescope sergeant, and medical sergeant; thirty-eight in the staff company for the company commander, 1st(machine gun) platoon leader, 1st platoon range finder man, eight 1st platoon motorcycle machine gunners/assist. machine gunners, four 1st platoon motorcycle shooter-men, 2nd(machine gun)platoon leader, 2nd platoon range finder man, eight 2nd platoon motorcycle machine gunners/assistant machine gunners, four 2nd platoon motorcycle shooter-men, 3rd(communications) platoon leader sergeant, civilian motor vehicle maintenance specialist, civilian weapons master, weapons sergeant, two weapons master helper men, supply sergeant, medical sergeant, and civilian paymaster.

The unit was also authorized 115 rifles, 8 G41(M) rifles with Zf.41 scope, 38 machine pistols, 8 heavy machine guns, and 1 light machine gun. The machine gun ammunition bearers in the 1st & 2nd platoons were armed with rifles. Four motorcycle shooter-men in the 1st platoon and four motorcycle shooter-men in the 2nd platoon were armed with the 8 G41(M) rifles with Zf.41 scope. The machine gunner and assistant machine gunner in the weapons section were the two pistol-armed weapons master helper men; weapons section MG ammunition bearers were not specifically designated. All 10 officers received issue pistols. Six officers were issued machine pistols in addition to pistols(battalion commander, adjutant, administrative officer, staff company commander, 1st & 2nd platoon leaders, and communications platoon leader NCO).

STAFF AND PROVISIONING PLATOON-SUPER HEAVY MACHINE GUN BATTALIONS  
(20mm ANTI-AIRCRAFT GUNS ON GROUND MOUNTS)(HORSE DRAWN)(1944)

Heer and Waffen-SS TO&E number 121a for a Stab und Versorgungszug einer ueber-schweren Maschinengewehrbataillons(2cm Flak auf Erdkampf-lafette)(besp), dated 1 November 1944, lists an authorization of 6 officers, 1 civilian, 12 NCOs, and 66 men. Eight issue pistols were authorized-three in the staff for the battalion surgeon, veterinary officer, and medical sergeant; five in the provisioning platoon for the paymaster officer, civilian weapons master, battalion clerk sergeant, farrier sergeant, and stable man.

The unit was also authorized 57 rifles, 20 machine pistols, and 1 light machine gun. The machine gunner was a provisioning platoon clerk armed with a rifle; an assistant machine gunner & MG ammo bearers were not specifically designated. Three officers were issued only machine pistols and were obligated to utilize commercial pistols(battalion commander, adjutant, and administrative officer).

WANTED

Baby, Papa & Grandpa Nambus for my personal collection - must be at least 96% or better, original & matching. Have items to trade or will buy. George Dvorak, 612-364-5247 evenings, or 612-593-4348 days

Dormus cartridge; grips and mag for new model police/military 9mm W&S. Ernie Lang, POB 2272, Cayce, S.C. 29171

WWII German armourer's equipment - headspace guages, barrel guages and related tools bearing WaA 42 proofing, Jeff Harker, POB 360483, Milpitas, Ca. 95036

Zero series P38, any Walther series, matched in 95% or better condition, please price and describe fully. Ken Kogan, Box 130, Lafayette Hill, Pa. 19444

P08 sideplate #04 - have #26 for trade or for slae. John Boncuore, 7311 W. 57th St., Summit, Il. 60501

WWI & WWII German field equipment and helmets; carrying handle and rear sight for MG15; pre-WWI European uniforms; MG13 w/drum type mag; flare pistols - Kampistolen Z Sturmpistole, LP42Z, LP42, etc. Bob Young, POB 3206, Ballwin, Mo. 63011 314-256-3377

M1911 Argentine made by Colt in 95% or better condition, price and describe fully. Howard Miller, 712 Argyle Rd., Wynnewood, Pa. 19096

Am looking for the following Imperial accepted P08 magazines:7056a, 1702a, 2563b, 8723a, 9307, 5430q, 3727m. Krieghoff mags #563 and 5792. Simson mags #6402 and 8280. Have 15 mags to trade, if they can help fill a vacant slot. Want Imperial accepted P08 cleaning rod, loading/stripping tools; Simson E/6 tool; Krieghoff early E/2 tool. Need a 1911 dated Erfurt P08, 90% or better. Seeking P08 holsters dated 1911, 1912, 1913 and 1917, also for blank chamber Simson P08 and Krieghoff P08, 1936 or earlier. John F. McAhon, 4221 Redbud, Odessa, TX, 79762. Phone 915/366-7899 (home) 1700-2100 hours week nights and anytime on weekends, 915/335-3349, 0600-1400 hours weekdays, central time.

Mag for Dreyse 9mm Armeepistol; mag (12 or 25 round) for Beretta 1918/31 semi-auto carbine. Jack Valenti, 2835 Sloat Rd., Pebble Beach, Ca. 93953  
404-646-0264 PM

TO STEVE GARDNER FROM N. J. van GIJN Would it be possible for you to send me a complete set of photos of your Vickers Luger (including close up shots of the right and left sides). Would also appreciate a photocopy of the letter. I thought I had seen everything, but this specimen is CRAZY! By the way, commercial Vickers Lugers are NEVER seen by anyone in Holland...  
\* I'm looking for copy material and/or photos or info about the Stoner 62, 63, 63A assault rifles.  
\* I'm also looking for a copy of the blue print of the metal part of the Luger stock, signed with 'Infanterie Construction Bureau': Wallebox 164, 2134 H2 Hoofddorp, Holland.



WANTED

Rem Rand 1911A1 between 1365590 & 1365988, any condition; Nazi holster for FN 1922, soft pattern, vg or better; Nazi holster for Astra 300, vg or better; Astra 300 mag; scabbard for U.S. 1917 bayonet (not USN); WWI U.S. marked first aid pouch; three 37mm aircraft flares, WWII dates. Bob McCrary, 5716 Maywood, Raytown, Mo. 64133 816-737-1904

Stevens adjustable rear target sight for 1936-37 type .45 Colt Nat'l Match pistol. Bob Seijas, 43 Stony Brook Rd., Montville, N.J. 07045 201-334-3689

Simson P08 tool, E/6 marked; Luftwaffe P08 tool, early E/2 marked; correct holster for Krieghoff early 'S'; correct holster for blank chamber Simson P08; mag for early 'S' Krieghoff #563. John McAhon, 4221 Redbud, Odessa, Tx. 79762 915-366-7899

Springfield 1911 mag, one MINT and another vg or better, please describe/price. Taps Gauthier, 967 Rosa Ave., Metairie, La. 70005 504-833-0357 PM

"10 CM." .25 autos. John Breathed, 120 Medalist, Austin, Tx. 78734

Grips for early Bolo Broom - wood or black rubber floral pattern. John Coe, NW Orchard Dr., Hamilton, Mt. 59840 406-961-3397

1934 or 1935 P08 holster, exc or better. Howard Crouse, 111 S. Wood, Paullina, Ia. 51046 712-448-3868

Pre-war cleaning rod for Walther PPK/.22; operators manuals for 1926/1932/1936 Walther Olympia pistols, cash or trade. Walter Goodrich, Rt. 1 Box 281 AA, Palmyra, Va. 22963 804-589-2661

Original factory box for 1910 Mauser. Alan Cox, 3215B Regents Park Ln., Greensboro, NC 27405

I will pay \$250 for the P38 mag or mag base plate, in any reasonable condition, with the serial number 4346b factory stamped on the base thereof. Pete Fitchen 408-458-0349

Radom, phosphate finish with wood grips; Radom, pre-war Polish issue, any date; non-French, phosphate finished HSc - interested only in as new condition. Ed Rothgeb, Box 98, Shipman, Va. 22971 804-263-5272

Left grip and mag for 1928 LeFrancis 9mm Browning long pistol. Jim Vasey, Box 444, Elkton, Or. 97436

Inglis holster stock and/or lug only with screw; original grips for FN 1903; left grip for 1908 Bayard; left wood grip or pair of original plastic grips for HSc; original set of grips for Turkish Kirikkale. Paul Brammer, POB 8485, Kansas City, Mo. 64114 816-333-6509 PM

1917 naval Luger; 39/42 P08 w/two matched mags in like new condition; '36 or '37 Krieghoff; 41/42; have the following P08 mags for trade if they match your gun: wood - 692c, 4894, 9879 plus, 5349, 2003g, 5144b plus; Krieghoff #10048; alloy - 2339s, 6699m plus, 7583m plus, 190y; 8772g, 4314r, 8953L plus. Dave Gunem, 4224 42nd Ave. S., Mpls., Mn. 55406

Warner Infallible pistols, empty boxes, spare mags, holsters marked Warner or WAG, old catalogs, ads, or photos of the Warner Factory located in Norwich or Assonet. Bill Kotrba, 621 N. Windham Rd. Ext., N. Windham, Ct. 06256

Nazi 98k's wanted - late war (1945) only, preferred codes are SVW 45, SVW MB, DOU 45 SWP 45, bcd 45. Please NO reworks or mismatches. Philippe Aube' 514-283-3616 days or 514-672-2218 evenings

SALE/TRADE

FN 1922, French naval issue (anchor on top of slide), .32, #1825, 97%, \$525; FN HP, WaA 103, tangent, #83189, Belgian holster, 95%, \$675; Mauser 1914, #169512, Prussian eagle acceptance, spare mag, dated holster, 96%, \$350; P08, 42/1939, 95%, matched mag, unmarked holster & spare mag, \$775; PPK, .22, two proper mags, \$950; PPK, E/N, factory plated, 99%, \$625; PPK, .380 BMR, some pits/95%, \$575; PP, .32, Verchromt, brownish red grips, 94%, \$975; Walther #8, 96%, AKAH holster, \$375; have two PPK, PDMs, 98% and 95% - will trade one for a PP .380 high polish WaA of equal condition. Pete Cuervo 914-225-0066

Colt M1902 Sporting Model, early #55xx with forward serrations and patent date magazine, VG, \$450; M1902 Colt Military U.S. contract #15151, refinished but sharp marks and edges, proper nickled patent date magazine, \$2500; Model 1900 Colt U.S. Navy contract, refinished as above with proper magazine as well, \$2500; Colt M1911A1, parkerized, new in the box, \$795; Model 1911's: Rem-UMC, three digit number, VG, \$895; Colt-NRA, VG, \$1750; Early Navy contract, #18xx, VG, \$1200; Another Navy #40xxx, VG, \$895. Scott Meadows, 601 Sunset, Ardmore, OK 73401. (405) 223-3988.

Springfield Armory(new) M1911A1, #6945, park., NIB, \$400.; S.A. M1911A1 factory cut-away, #7205, NIB, \$450.; Colt Govt Model, #C112082, probable re-blue, 100%, w/2-tone mag, brass cleaning rod, in wooden case, \$700.; Colt M1911/A1 Transition piece, w/ factory letter, 98%, \$1500.; DWM 1916 Luger, all match, except mag. which is correct style, has sear safety, mag. safety cut-out, Brit. proofs, frt. strap marked "L.O.120.", w/ holster (Schambach & Co., Berlin, 1929, and extra fxo 37 mag., VG, \$700.; Winchester M94 Bicentennial Comm., NIB w/sleeve, rack and 1 bx. Comm. ammo, \$750.; BAR M1918A2 parts kit, less bbl, rec., includes Bi-pod, \$295.; Ruger Playing Cards, single deck, silver box, unopened, \$200; HOLSTERS: Swedish Colt 1911, brn leather w/ 2 pouchs for mags, "lift the dot" snap fastener, belt flap hooks underside, mk'd w/ circle, M. W. and rifle on strap, \$50.; Norwegian .45 holster, lgt. brn, lift strap inside, no mag pouch, stud fastener, unmk'd, \$30.; (2) Jay-Pee "The Reliable 1" blk, swivel w/ flap, Police Service Revolver, new. \$15. ea; (2) Bucheimer USAF Air Police holsters w/ ammo pouchs, both mk'd "Holster Ass'y, GUU-1/P, FSN 1095-819-8591, J.M. Bucheimer Co. 1970, F.09063-70-C-4193", swivel type, fits S&W M15, new, \$25./set; Bianchi M66 ambid. .45 holster, blk, \$30.; Contact Jim Davis, 301-262-4704, if no answer lv message on answering machine. FFL, postage 3-day inspection.

P08, 41-BYF, 95%, Ku. Suffex, \$1550; 1906 Port. Army, 96%, Emanuel 2nd crest, \$1675; P08, Austrian B.H., 99%, \$1650; Mauser, HSC, 98%, WaA, \$322; 1900/06 Swiss, DWM, .30, 98%, Sunburst Swiss +, \$2650; Czech P-27, 98%, WaA, \$275; P-38, CYQ, 98%, \$450; P-38, CYQ, 96%, \$400; Walther PPK, .32, 95%, E/C Finger Ext Clip, \$450; Walther PPK, .32, 95%, WaA 359 (light brown grips), \$425; Walther PPK, .32, 95% finger Ext. clip E/F, \$450; Walther PP, ac, .32, 98%, WaA 359, \$475; Walther PP, .32, 95%, WaA, large finger Ext., \$425; Walther PP, ac, .32, late finish, mismatched, \$375; Beretta 1934/1941, .32, 98% nickel barrel, \$295; Mauser, Broomhandle, Red 9, 98%, (w/matching stock), \$1750; Mauser 1930 Comm., Broomhandle, DRP u AR, 7.63mm, 95% Step down Barrel, \$1050; P08 1924 Swiss Bern, .30, 99%, Rose Wood Grips, \$2250; P08 1920 Commercial, DWM, 9mm 98%, No "Germany" No Stock Lug, \$1150; P-38, ac 43, 9mm, 95%, \$495; Nagant 1895 Revolver, 7.62mm, 90%, 1937, \$235; Astra 600/43, 9mm, 98%, \$225; Frommer 1920 Stop, .32, 90%, \$155; Unique 17, .32, 95%, Nz/Eagle on barrel, \$225; P38, BYF 43, 9mm, 97%, Brown Grips, \$450; P08 Military, 1911 DWM, 9mm, 95%, \$850; Sauer 38-H, .32, 95% E/C \$395; Walther PP, .32, 95%, WaA 359, \$385; P08 1920 Comm., 4744, DWM, 95%, \$525; Beretta 1934/1944, 98% late finish, \$275; Mauser 1934, banner, .32, 98%, \$235; Astra 300, 98%, WaA 251, \$395; ECKO, Flieger Leuchtpistole, FL 24483, 98%, \$385; Bob Young (314)256-3377 P.O. Box 3206, Ballwin, MO 63011

SALE/TRADE

T94, 20.4, matched mag, as new loose weave holster w/strap, near new rig, \$1200; T94, 20.1, matched mag, tight weave holster, near new rig, \$875; 1913 DWM, added hold-open, matched mag, near new, \$1250; 1912 DWM, unit marked, no hold-open, near new, \$1200; PP, PDM, 97%, \$925; 98a, 1917 Amberg reworked S42/G, near new in & out, \$700; Sauer 38H, E/F, 99%, \$450; Sauer 38H, E/C, 99%, \$425. Ed Rothgeb, Box 98, Shipman, Va. 22971 804-263-5272

P38s: ac41, first variation, matched mag, 97%, \$550; ac43, FN slide, dual tone, 99½%, \$995; bfy 44, 99½%, \$450; Star B, LPN, 99½%, \$350; T14, 5.1, 97%, \$350; Service Ace, as new in box, \$525; pre-war Woodsman, 6", 97%, \$375; S&W M39-2, 100%, \$300; RIFLES: K98, byf 44, 99%, \$400; Rem P17, dark bore, 98%, \$175. Will consider trades for commercial, pre-war 1911 & 1911A1s. Chris 203-438-5820

Sauer 1913, 15391, W.A. & SCH. N.11 unit marked, 85%, original black holster dated '16, original waist belt with plain heavy brass buckle indicating French mfg., spare mag, \$250 plus \$3 shipping & FFL. Bob McCrary, 5716 Maywood, Raytown, Mo. 64133 816-737-1904

LP08 holster, Rudolf Marx/Koln A/RH & F.A.R. 1915, light brown leather showing some abrasions, stitching intact, cleaning rod & tool, \$300 (\$175 for holster only); 1920s, U.S. made belt holster for LP08, green felt zip-up lining, vg, \$100; LP08 holster, '14, converted to belt loop and snap closure, rod pouch removed, \$50; LP08 holster, repaired, dyed black, repro stock, straps, rod & tool, \$250; LP08 holster, stock straps, rod, tool and double mag pouch, brand new Asian made repro, \$300; original Persian LP08 rig, complete as above, exc, \$350; original 1920 commercial LP08 stock, unmarked, exc, \$350; Odin Internat'l repro stocks, new, LP08 @ \$75, naval @ \$60; repro LP08 or C96 cleaning rods, \$20 each. Tom Heller, POB 578, San Bruno, Ca. 94066 415-359-2290

Have five VZ 1922 (Nickl) Czech army pistols for sale or trade, SASE for descriptive list, Bill Kotrba, 621 N. Windham Rd. Ext., N. Windham, Ct. 06256

P38, ac44, FN slide, post war Czech, Vopo accepted, #5953e, proper holster, 100%, \$600; PPKs: 775163, c/N, 90 degree, ext. mag, spare mag, 98%, \$550; 867371, c/N, 90 degree, ext. & flat bottom mags, 98%, \$550; 249744, c/N, ext. & flat bottom mags, capture papers, 98%, \$550; 310593, E/N, ext. & flat bottom mags, 98%, \$550; 347855, E/N, ext & flat bottom mags, 98%, \$550; 416294, black grip/ext., spare flat bottom mag, 98%, \$550. Austin Crow, P. O. Box 932, Gainesville, Ga. 30503 404-534-3636 days

A. J. Savage 1911, 90%, \$625; Argentine DGF/M/FMAP, 97%, \$375; Russian Colt, 97%, \$1550; Rem UNC, 96%, \$750; Singer, 98%, \$8000; Springfield NRA, 90%, \$2050. Bill Jenkins, POB 643, Cedar Falls, Ia. 50613 319-236-1118

Colt 1903 hammerless-Type I, .32 ACP. This is early hi-polished beauty in excellent + condition. Factory letter included. Grips are perfect, mag is correct and original to gun. \$375.00. Colt Police Positive 32, nickel--First Year Production. SN 52,9XX 95%+ original nickel. First year features \$235.00. Colt magazines: 32 all blue-late war; 32 two-tone, 1930's and two-tone 1920's \$36 each. 380 1920's two-tone, \$45.00. Original Colt booklet "Colt on the Trail" (second edition, 1934, excellent condition (Colt #AL 117) \$27 Remington counter display case for 22 shells. The case is glass fronted, and has partitions for 5 stacks of different boxes. Paper label on top lists prices, etc.. Wood is in fine shape, glass original. These are scarce (ca. 1950's) \$50.00. Colt catalogs 1929 (#A-87) Exc. with price sheet 7 1/2 x 10 x 40 pages \$45.00; 1930 (A-87) V.G. cover dirty upper left corner slight damage, no price sheet \$30.00. Price list for catalog December 4, 1922, pink in color, \$7.00. Dave Smith, (414) 547-5802 evenings.

SALE/TRADE

Bolo Mauser cleaning rod; "Geschichte der Mauser Werke", 1938 factory produced history of the firm. James Hellyer, Box 22074, Fish Hook, 7975, Republic of South Africa

FN 22, Waa 140, 50%, \$100; CZ27, Waa76, 97%, safety not working, \$120; Mab D, Waa 251, 80%, \$110; PPK, E/c, 90% high polish, \$475; PP, NSKK, slide pitted/ markings clear, \$950; Sauer 38H, E/c, 90%, \$250; Radom, Waa77, 90%, take down, \$225; Colt 1911, 98%, \$1200; Colt 1911, Brit/W prefix, 93%, \$975; Norwegian 1914, '27, 93%, \$525; Springfield 1911, 85%, early mag, \$1050; Prewar ace, 65%, \$495; Model 70, factory scroll engraved, custom shop box, new, \$900; prewar National Match, fixed sights, factory checkered front strap, 99%, \$1300; Remington M51, .32, boxed w/instructions, as new, \$500; cased Lowe Borchardt, stock, holster, clips, oiler, 98%, \$9000. Three days/include FFL & \$10 postage. Steve Gardner, POB 594, Las Vegas, N.M. 87701 505-452-7929 evenings

Have the following mag bottoms only for sale - all Mauser P08 for rolled steel mags: droop E/63 - 47351 plus, 4716h plus, 99050, 7670L; stick E/63 - 8794x plus, 9849t plus, 3768s, 7368t, 5794y, 1852y; E/83 - 7931h, 5559g, 6782n, 6632n plus; large stick #/63 - 5093w. \$25 each or will trade for exc P38 mags, Mauser or Walther. Gerry Tomek, 1326 Mel Ros Dr., Aberdeen, S.D. 57401 605-226-0714 pm

LUGERS: 06/24 Swiss, near new, has 40% pressure proof on receiver, vg Bern holster, \$2450; 1923 SAFE/LOADED, 99% blue/98% straw, \$1275; P38, ac44, FN frame, 96%, \$575; Colt Officers Model Target, .22/6", '38, exc, \$425; SIG 210-6, 99%, micro adjustable sights, original green box #ed to gun, \$1750. Mark Finnell 904-642-1440 PM

Browning HP, pre T series, wood grips, near new, \$600; Colt Mid-range National Match, '60, NIB, \$650; Colt 1908, .380, 68xx, 60%, \$225; Browning 1955, .380, 99% in pouch, \$275. Jerry Ellis 305-235-2841 9am to 6pm

Hungarian 29M, #558, Hungarian military acceptance on guard, 98%, \$325. Howard Crouse, 111 S. Wood, Paullina, Ia. 51046 712-448-3868

Pre 1916 slotted mag for Colt 1911, \$50; pair of 1911 large diamond grips for 1911, as new, \$35; also have numerous American military SMGs & LMGs. Jim Ballou, 122 Lafayette Rd. Rt. 1, Salisbury, Ma. 01952

"INTERNATIONAL ARMAMENT", two volume set, vg, no dust jacket, \$75. Don Secrest, 4747 Riverwalk Tr., Lilburn, Ga. 30247

PISTOLS, Walther PP,EN, .22LR, 3022xxP 99%, \$850. Walther PP, Waa359, 9mmK, 1994xxP, matched mag, 98%, \$2500. Unusual post-war P.38, 6" barrel, steel frame, SN 02x, NIB, 2 mags, cl. rod, target, \$1500. Pre-war numbered boxes for Walther PP: 814870, 871332, 963657, 128438P, 146894P, 161180P, 163355P, 166366P, 185818P, Numbered mags for Walther PP: 750870, 125024P, 204441P, Numbered mags for Walther PPK: 764472, 990177, 261730K, 280464K, 314221K, 363924K. Numbered bases for PP or PPK: 226471, 331418, 199185. Numbered mags for Walther P.38: 03515, 04724, 09637, 010635+, 182c, 7312d, and for Swedish HP: 1621, 1763. Numbered holsters for police pistols: Sauer Behorden 208585, 099. Sauer 38H 048, Steyr 08/34: 14484, 26743 (This could be for a Dreyse) Mauser M1914 490469. Mauser HSc 753043, 858916. If you have the pistol for any of the numbered items above, I will trade items, or buy or trade for your pistol. Harold Anderson P.O.Box 55486, Lexington, KY 40555-5486

JULY 28-29 1990 JULY 28-29 1990 JULY 28-29 1990 JULY 28-29  
1990 NAPCA CONVENTION 1990 NAPCA CONVENTION 1990 NAPCA CONV

Please make your reservations now as there is a large trade show in Louisville the same week-end. We have a block of rooms saved, but when those are taken, there may not be any rooms available in town. If you cannot get a room, call me and perhaps I can help. SEE YOU IN JULY! Harold Anderson (W) (502) 863-0707 (H) (606) 299-2503

NAPCA Convention Headquarters  
P. O. Box 55632  
Lexington, KY 40555

I would like to reserve the following:

\_\_\_ Display tables (30"x96") @ \$25 each  
\_\_\_ Banquet tickets @ \$15.75 each

Total enclosed

Name \_\_\_\_\_

Address \_\_\_\_\_

City \_\_\_\_\_ State \_\_\_\_\_ Zip \_\_\_\_\_

Special Requests \_\_\_\_\_

ARRIVAL DATE

DEPARTURE DATE

GUARANTEED

YES  NO

CHECK IN TIME: 3:00 PM  
CHECK OUT TIME: 12:00 Noon

RESERVATION CANCELLED AT 8 PM. UNLESS GUARANTEED  
BY AMERICAN EXPRESS, MASTER CARD OR VISA

National Automatic  
Pistol Collectors Assn.

EXP DATE \_\_\_\_\_

July 27, 28, 29, 1990

OR FIRST NIGHTS DEPOSIT  
A GUARANTEED RESERVATION MEANS THE RESERVATION WILL BE HELD FOR THE FIRST  
NIGHT OF ARRIVAL ONLY

48 HOURS NOTICE REQUIRED FOR REFUND

\_\_\_ \$38 Single  
\_\_\_ \$42 Double

PLEASE RESERVE

SINGLE (ONE PERSON ONLY)  
 2 DOUBLE BEDS ( ) NO. PERSONS

Plus 9.2% State and Local Tax

RESERVATIONS MUST BE  
RECEIVED BY July 13 FOR  
CONVENTION RATE.

NAME \_\_\_\_\_

ADDRESS \_\_\_\_\_

CITY \_\_\_\_\_ STATE \_\_\_\_\_ ZIP \_\_\_\_\_

FIRM \_\_\_\_\_

CITY \_\_\_\_\_ STATE \_\_\_\_\_

  
The  
**HURSTBOURNE**  
Hotel and Conference Center

9700 Bluegrass Parkway  
Louisville, KY 40299  
502-491-4830



N.A.P.C.A.  
 Box 15738  
 St Louis MO  
 63163-0738

date: 8 April 1990

TO THE MEMBERSHIP FROM ORV REICHERT:

The following is a list of Stolen Pistols (all P.38s) that have been reported to me: If you know of any of these guns, pls call me at 415-458-2833.

| CODE   | NUMBER | DATE  | CODE     | NUMBER | DATE         |
|--------|--------|-------|----------|--------|--------------|
| MOD HP | H-1824 |       | AC44     | 9849-H | 04 87        |
| MOD HP | 2764   | 03 90 | AC44     | 6065-I | 04 87        |
| MOD HP | 15705  | 04 87 | AC45     | 652    | 04 87        |
| AC45   | 026181 | 10 82 | BYF42    | 1469   | 03 90        |
| AC45   | 026419 | 00 80 | BYF43    | 1859-G | 03 90        |
| BANNER | 02764  | 03 90 | BYF43    | 9745-0 | 04 87        |
| BANNER | 07964  | 03 90 | BYF44    | 6613-R | 04 87        |
| 480    | 408    | 03 90 | BYF44    | 1580-V | 03 90        |
| 480    | 4278   | 04 87 | AC44     | 9733-C | 03 90        |
| AC40   | 2018-B | 04 87 | BYF44    | 7103-D | 03 90        |
| AC40   | 6315-B | 03 90 | AC43     | 2522-E | 03 90        |
| AC41   | 5634   | 04 87 | SVW45    | 4532-E | 04 87        |
| AC41   | 9202-F | 04 87 | SVW45    | 8437-E | 03 90        |
| AC41   | 3511-H | 04 87 | SVW45    | 309-G  | 01 81        |
| AC41   | 7493-J | 03 90 | SVW45    | 899-H  | 04 87        |
| AC41   | 9008-J | 04 87 | SVW45    | 3632-H | 03 90        |
| AC42   | 2056   | 04 87 | SVW46    | 5872-K | 03 90        |
| AC42   | 710-J  | 03 90 | SVW46    | 7727-K | 04 87        |
| AC43   | 4298-K | 04 87 | SVW46    | 7827-K | 04 87        |
| AC43   | 588-M  | 04 87 | CYQ      | 7094-M | 04 87        |
| AC43   | 8204-N | 04 87 | P38 (LW) | 8313   | 04 87        |
| AC44   | 6258-F | 04 87 | P1       | "      | 230209 04 87 |
| AC44   | 4132-H | 04 87 | P1       | "      | 315141 04 87 |