

This is a brief overview of the legitimate variations of the SS rework "Death Head" P08.

Important Note:

The DH stamps are an acceptance following repair or modification. Any new condition guns the SS received from the Army, or any weapons in SS inventory that were considered field serviceable were not marked because there was no reason to do so. ***It is not a property mark!***

Type 1 (Subvariation 1)

Probably the earliest reworks, dating to late 1936/early 1937, with the early type ∞/skull acceptance is facing the "wrong" way. All examples of this variation are commercially proofed in the "Suhl" style, with the Crown/N stamped on the left side of the receiver and frame, the top of the breech block, and barrel. All chamber dates are scrubbed. Reblue and polishing is sometimes a bit amateurish.

Early DH Type 1 SN 3281





Early Type 1 SN 6745





Early Type 1 SN 9450





Type 1 (Subvariation 2)
Identical to the 1st subvariation except the acceptance is stamped to face down the barrel.

Late Type 1 DH SN 2867





Late Type 1 DH SN 7609





Late Type 1 DH (DDR Rework) SN 1553 (possibly renumbered by the DDR)



Type 2 (probably the most common)

The Type 2 likely dates to 1938, and includes a change in acceptance die and a change in the proof house. The identical die used on these has been seen on SS Gew98 reworks, all of which have commercial proof dates in 1938. All of the Type 2 guns are proofed in the "Zella-Mehlis" style with the Crown/N stamped sideways on the right side of the receiver, the sides of the breech block and toggle, and the barrel. The barrel also has Zella-Mehlis style barrel gauge markings also. Chamber dates are no longer scrubbed. **Note:** (probably all) of the SS rifle proofing was performed at Zella-Mehlis.

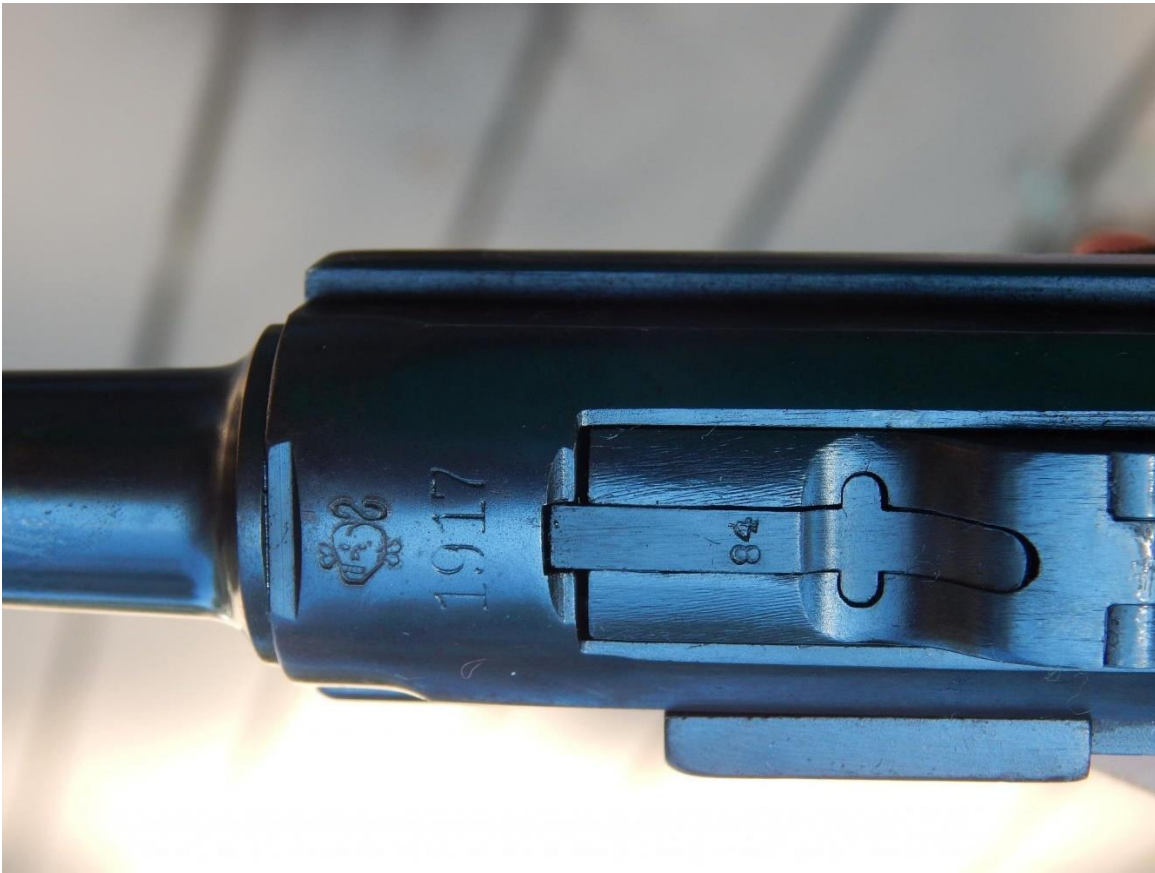


Type 2 DH SN 98



Type 2 DH SN 4984





Type 3 (**suspect**)

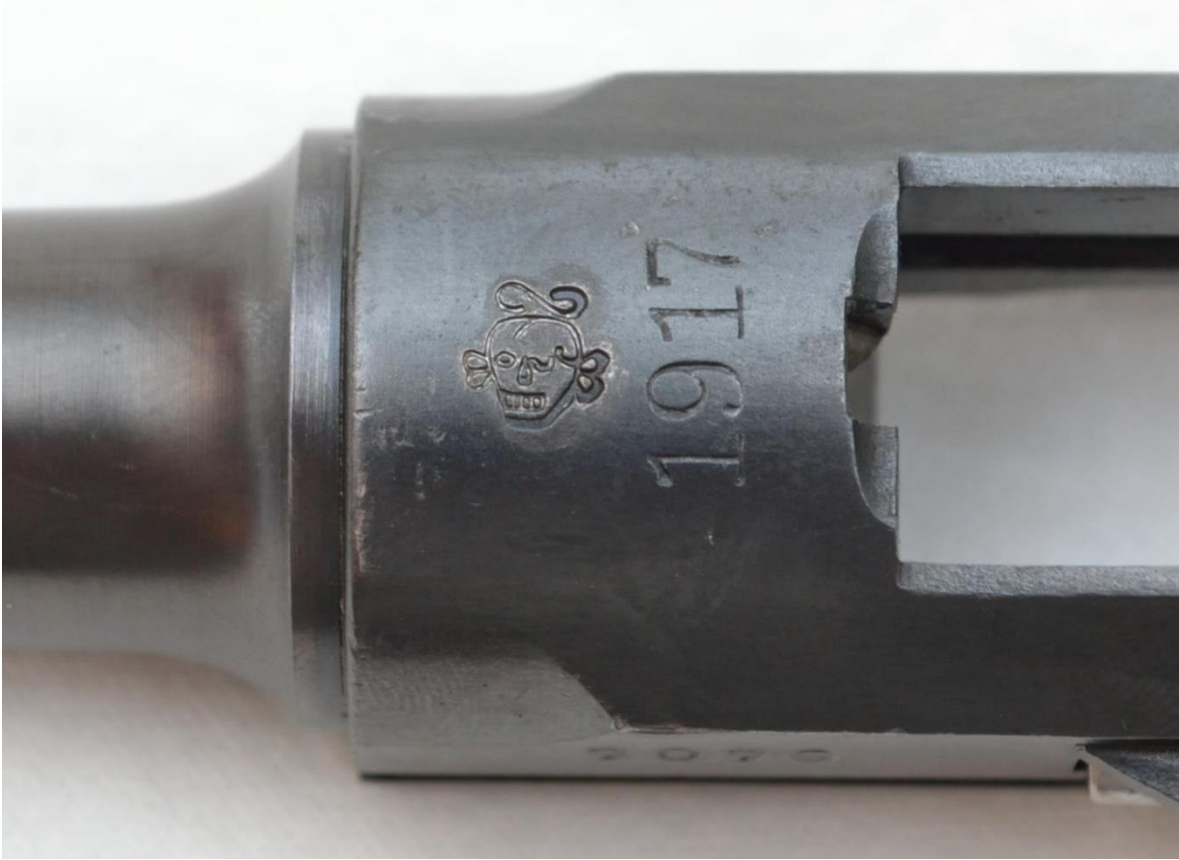
The Type 3 is identical to the Type 2 except for a change in the acceptance die. Possibly 1939? Some of these look...not great, and I am very suspicious of them. I consider this type to be suspect at best. This die has not been observed on any rifles, however 1939 dated ∞/skull reworks are not often seen.

Type 3(?) SN 4087





Type 3(?) SN 7076





Type 4 (SECRET)

This type is **[REDACTED]**. Unfortunately, these are exceedingly rare (I am aware of only two) and I have no photos I can share.

Other types?

It is very possible that the other two SS depots in operation 1936-1939 (+ and =) were also reworking pistols. However, I have only ever seen one attributed to + and only one low resolution photo. It is impossible to tell if it is legitimate or not.

By 1941, the Waffen-SS is slowly integrated into the Army's logistical system, and the field divisions are almost completely armed with standard Heer production weapons. With regular deliveries of new production weaponry, the old WW1 era junk was no longer required, and the SS conversion/rework program fizzles out in 1940/41, though depots continued repairing damaged weapons until the end of the war. A lot of this older stuff likely ended up in SS training units (the rifles are almost always completely mismatched and worn out) or SS-TV units, both of which the Heer flatly refused to arm.