

April 1976

RALPH E SHATTUCK, 6661 CASTLE DR, BIRMINGHAM, MICH 48010

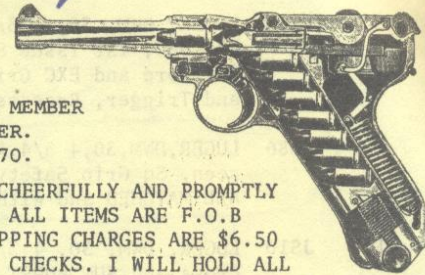
PHONE: 313 851 7107 or 626 9752

LIFE MEMBER OF THE OHIO, MICHIGAN, HOUSTON GUN COLLECTORS

MEMBER OF DALLAS, GEORGIA, TENN, CINN and ROYAL OAK. CHARTER MEMBER

OF MISSOURI and ROCHESTER GUN COLLECTORS. NRA ENDOWMENT MEMBER.

TECH EDITOR OF ARMS GAZETTE: NATIONAL DISTRIBUTOR OF THE TP-70.



ALL PISTOLS ARE GUARANTEED TO BE AS DESCRIBED OR YOUR MONEY CHEERFULLY AND PROMPTLY REFUNDED IF SHIPPED BACK TO ME WITHIN 3 DAYS AFTER RECEIVED. ALL ITEMS ARE F.O.B DETROIT. I MUST HAVE A COPY OF A FEDERAL LIC TO SHIP TO. SHIPPING CHARGES ARE \$6.50 PER WEAPON UNDER \$500.00 and \$8.00 OVER \$500.00. NO PERSONAL CHECKS. I WILL HOLD ALL WEAPONS FOR 4 DAYS ON PHONE CALLS. IF I AM NOT HOME, MY WIFE NANCY WILL HOLD THE WEAPONS. I SUGGEST CALLING THE SAME DAY YOU RECEIVE THE LIST. MY PRICES ARE NORMALLY BELOW THE CURRENT RETAIL MARKET AND ARE AIMED FOR THE COLLECTOR AND SHOOTER. SUBSCRIPTION RATES; SINGLE LIST \$.060..FOR YEAR...\$3.00...OVERSEA'S RATE IS \$10.00

LIST 170

ITEM STOCK NO

- 1 6540 LUGER, 9mm, DWM, 11 7/8, #24394. ONE THE RAREST OF ALL LUGER CARBINES. THE 9mm 1902. THIS IS THE ARGENTINA MILITARY ACADEMY 1902 CARBINE. The Contract was for 50 Carbines in 9mm. ONLY 50 made in 9mm. Restored. MINT ORIGINAL Wood. FORESTOCK, Grips, Shoulder stock that matches the Carbine. B.U.G PROOFED. MINT STRAW, 100% Finish, ARGENTINE SEAL IN THE STOCK. ALL MATCHED.....\$3500.00
- 2 6543 LUGER, 30, 11 7/8, #24329, DWM. THE SUPER RARE EAGLE 1902 CARBINE. LESS THEN 5 KNOWN EAGLE CARBINES. From a Leading Collector..ALL MATCHED and ORIG. EXC BORE, MINT FORESTOCK and GRIPS and STRAW, 99%.ALL MATCHED, DEEP EAGLE on the Chamber..STOEGER ERA..TOP COLLECTION CARBINE VALUED AT \$5000.00 at only a fraction of the True value.....\$4100 00
- 3 INJ LUGER, 30, 11 7/8, DWM, #8939t. THE SUPER RARE 1920 CARBINE, without forestock. This rare variation is SEEN in Kenyon. 11 7/8 Barrel with ramp sight. VERY few seen in collections..AND IT IS MINT..ONLY.....\$1350.00
- 4 SP10 LUGER, DWM, 3 7/8, 30, #9453..COMPLETELY MINT 1920 CUTAWAY. This is from a TOP COLLECTOR who broke up his collection. There isn't a Better CUTAWAY available. (INCLUDING MINE)..ALL MATCHED, SALESMAN SAMPLE. Shown in KENYON..A MINT PIECE.....\$1000.00
- 5 JS3 LUGER, DWM, 9mm, 4", #22734..THE SUPER RARE 1902 FAT BARREL..ONLY 700 MADE. THIS IS THE 1902 AMERICAN EAGLE. This is a TOP COLLECTION EAGLE THAT APPEARS once in a Life time in Collecting. With only 700 Made..Where do you find them? ALL MATCHED and 99% MINT IN AND OUT ORIG FINISH.....\$2500.00
- 6 6563 LUGER, MAUSER, 4", 9mm, THE VERY LUGER SHOWN ON PAGE 268 KENYON. 1935 PERSIAN . THE RAREST OF THE MAUSER CONTRACTS. ONLY 2000 MADE in 4". The CLASSIC of the PERSIANS..NEAR MINT ORIG FINISH and COMPLETELY LEGAL to OWN. MINT GRIPS and ALL MATCHED with a PERSIAN MAG.....ALL FARSE NUMBERS.....\$4000.00
- 7 6566 LUGER, DWM, 30 4 3/4, #1004, 1900 SWISS. The COMMERCIAL/MILITARY 1900 SWISS. THE FIRST CLASSIC CONTRACT LUGER..MINT BORE AND GRIPS, SECOND ISSUE SAFETY, NARROW TRIGGER, SQ GRIP, 97% ORIG MINTY FINISH, SLIM TAPPERBD CLASSIC BARREL. RECESSED BREACH BLOCK, TOGGLE LOCK..ALL MATCHED..TOPS and RARE.....\$850.00
- 6551 LUGER, DWM, 30, 4 3/4, #15396. THE VERY RARE 1900 PORTUGUESE COMMERCIAL. ONLY 1000 MADE. One the rarest of the 1900 Contracts. Portuguese Property Marked. B.U.G PROOFED, MINT BORE and STRAW, EXC GRIPS, EXC to Near MINT...\$1000.00

WILL BE AT THE FOLLOWING SHOWS..COME AND VISIT ME..MISSOURI ARMS..IN ST LOUIS..June 5-6
THE OHIO GUN COLLECTORS MAY 7-8, NASHVILLE SHOW..MAY 15-16, DALLAS SHOW JUNE 11-13

ITEM STOCK

- 9 6544 LUGER, DWM, 30, 4 3/4, #4494. 1900 COMMERCIAL, SWISS CONTRACT COMMERCIAL. BUG PROOFED, 1st Issue SAFETY. This is a BEAUTIFUL One of a Kind 1900 Commercial. EXC Bore and EXC Grips and STRAW. 99% Beautiful RICH Rust Blue. Narrow Safety and Trigger, Recessed Breach Block, Toggle Lock, Slim Tapered Barrel...\$750.00
 - 10 6586 LUGER, DWM, 30, 4 3/4, #11711. MINT IN AND OUT. 1906 SWISS POLICE. The Best I have seen. Sq Grip Safety, Slim Tapered Barrel, Shield and Cross on the Chamber. ALL MATCHED and with a ORIG HOLSTER..The BEST.....\$775.00
 - 11 JS10 LUGER, DWM, 30, 4 3/4, #2470i. THE HARDEST SWISS TO FIND..The 1906/20 SWISS. Cross and SUN BURST on the CHAMBER, 4 3/4 Slim Tapered Barrel, Sq Grip Safety. MINT BORE, EXC FINISH, ALL MATCHED SERIALS, EXC MAG..A MUST.....\$600.00
 - 12 JS-9 LUGER, BERN, 4 3/4, 30, #23171. THE CLASSIC of the SWISS..The 1924 BERN. The FIRST LUGER to be Made outside of GERMANY. Classic BORDERED GRIPS. THE BEST available..COMPLETELY MINT IN AND OUT.....\$700.00
 - 13 6581 LUGER, BERN, 4 3/4, 30, #16367. The 06/24 EARLY BERN. A CLASSIC 24 SWISS in every Respect. MINT IN AND OUT. NOTE PAGE 212 KENYON..Classic Bern Grips. TOP OF THE LINE 1924 SWISS BERN.....\$700.00
 - 14 JS-8 LUGER, BERN 4 3/4, 30, #58528. THE FAMOUS 1929 SWISS. The FIRST LUGER to incorporate 10 MAJOR CHANGES in DESIGN. SWISS MILITARY. SLIM TAPERED BARREL. ALL MATCHED with DARK BROWN GRIPS..MINT IN AND OUT.....\$700.00
 - 15 6582 LUGER, BERN 30, #25392, 4 3/4. THE SWISS COMMERCIAL. ONLY 1700 MADE. THIS is the VERY SAME LUGER THATS SHOWN on PAGE 215 KENYON..ALL MATCHED 1929 SWISS COMMERCIAL. THIS IS A P-CODE..P-25392..TOPS and RARE.....\$800.00
 - 16 6592 LUGER, DWM, 9mm, 4", #12513..THE RARE 1906/29 DUTCH AIRFORCE LUGER. ALL MATCHED SERIALS. EXC Bore, Sq Grip safety, SAFETY MARKED "RUST with ARROW. Good Finish A MUST for all Collectors and a LOW PRICE.....\$325.00
 - 17 6580 LUGER, DWM, 30, 4 3/4, #906 BRAZILIAN. EXC PLUS GRIPS, ALL MATCHED serials with .98% Finish..Blank Chamber with a Slim Tapered Barrel, Sq Grip Safety. BRAZILIAN PROOFED..RARE VARIATION with a LOW PRICE....ONLY.....\$350.00
 - 18 6591 LUGER, 9mm, DWM, 4", #38267..The RARE 1906 9mm EAGLE..There were ONLY 2700 MADE in 9mm. FEW are seen. Sq Grip safety, Deep eagle..EXC Orig Finish with a 9mm Mag..MATCHED...MECH EXC.....\$550.00
 - 19 MC-2 LUGER, DWM, 30, 4 3/4, #67001..THE HANS TAUSCHER 1906 EAGLE so Listed in the World of LUGERS BOOK..Slim Tapered Barrel, Deep EAGLE, EXC STRAW and GRIPS, MINT BORE, 98% ORIG BLUE, Nitro Proofed, with RARE HOLSTER..MATCHED....\$750.00
 - 20 CLC LUGER, DWM, 30, 4 3/4, #29802...Classic 1906 AMERICAN EAGLE with Slim Tapered 4 3/4 Barrel, DEEP EAGLE, 98% RICH ORIG BLUE, MINT GRIPS, MAG and Near Mint Straw..TOP COLLECTION EAGLE.....\$725.00
 - 21 RB94 LUGER, DWM, 4 3/4, 30, #55034. MINT BORE 1906 AMERICAN EAGLE. MINT STRAW and MAG. DEEP EAGLE..98% ORIG NEAR MINT FINISH. Nitro Proofed..MATCHED...Sq Grip Safety and Classic Tapered Barrel.....One of the BEST AVAILABLE....\$650.00
 - 22 RB93 LUGER, DWM, 4 3/4, 30, #4480..1906 EAGLE, Slim Tapered Barrel, Deep Eagle on the Chamber, ALL MATCHED, Sq Grip Safety. ALL ORIGINAL, EXC in and OUT. This is a EXC BUY for all you collectors.....-..\$500.00
 - 23 PF 1 LUGER, DWM, 6", 9mm, #8419a. 1906 NAVY 2nd Issue. 100/200 Meter Sights and CLASSIC 6" Navy Barrel. Nickel Plated..SHOOTER, Sq Grip Safety.....\$250.00
- EXTRA SPECIAL; HEANEL STAINLESS MAGS...\$35.00 EACH, ;WOOD BOTTOM MAG BUTTON's...MINT...\$6.50 ORIGINAL FRONT SIGHT FINE TUNED ADJUSTOR...SUPER RARE.....\$20.00

ITEM	STOCK		
24	TK	*LUGER, DWM, 6", 9mm, #1216. ALL MATCHED 1906 NAVY 2nd Issue. 100/200 Meter rear sights, EXC Grips and Mag, Sq Grip safety, VG Bore, VG to EXC orig Finish. ITD 2430 Proofed on the Back Straps.....A STEAL	\$675.00
35	JS-1	LUGER, DWM, 9mm, 6", #3900. 1st Issue Alt Navy. One of the More rare of the 06 Navy Variations. 100/200 Meter Sights..Navy Proofed, Sq Grip Safety, BACK STRAP MARKED W.K 260. EXC Orig Finish with a EXC Bore. MATCHED....	\$700.00
26	6595	LUGER, ERFURT, 9mm, 4", #9974..RARE THIRD ISSUE MILITARY ERFURT DATED 1912. MINT BORE and Grips and STRAW, NEAR MINT ORIG FINISH with 98%. MINT MAG. ALL MATCHED SERIALS..THIS IS A COLLECTION LUGER.....	\$335.00
27	6596	LUGER, DWM, 9mm, 4", #7070. THIRD ISSUE MILITARY DWM, CHAMBER DATED 1912. NO HOLD OPEN VARIATION. ALL MATCHED SERIALS, EXC Grips and Straw, VG to EXC Orig Finish...STEAL this Rare Variation.....	\$235.00
28	S365	LUGER, DWM, 9mm, 4", #3850b..Third issue Military chamber Dated 1913. ALL MATCHED and Mech EXC. No Hold open variation..VG to EXC.....STEAL	\$220.00
29	6597	LUGER, DWM, 9mm, 4", #3165..1914 MILITARY CHAMBER DATED 1915..One of the Harder dated Lugers to find. ALL MATCHED SERIALS, VG to EXC FINISH, ENGLISH FLAMING BOMB PROOFED....SUPER BUY.....	\$235.00
30	PC6	LUGER, DWM, 4", 9mm, #6039b..1914 MILITARY CHAMBER DATED 1917..This piece is a little rarer then that..It has the SIMSON Proof along with a SEAR SAFETY. MILITARY PROOFED. EXC Wood Bottom Mag and BORE and GRIPS. EXC Orig Finish. ALL MATCHED SERIALS...This is ONE HELL OF A STEAL.....	\$235.00
31	MJ\$ BS 1	LUGER, DWM/SIMSON, 9mm, 4", #9070r. This is a 1920 WEIMAR, that is a Scares variation. ALL MATCHED, SIMSON Proofed, VG with EXC STRAW. STEAL.....	\$225.00
32	6602	LUGER, DWM, 30, 3 7/8, #4786i..THIS IS A BASIC COLLECTION LUGER..1920 COMMERCIAL. This piece is a EXC Collection Luger. ALL MATCHED. MINT BORE, GRIPS AND STRAW. 98% ORIG FINISH..EXC PLUS ORIG BLUE....STEAL.....	\$240.00
33	6603	LUGER, DWM, 30, 3 7/8, #5622k..BASIC 1920 COMMERCIAL..REALLY a Fine Piece. MINT BORE, GRIPS, STRAW and MAG. ALL MATCHED, 98% Orig BLUE..STEAL.....	\$240.00
34	6601	LUGER, DWM, 30, 3 7/8, #90052..THE RARE 1923 SAFE/LOADED MARKED COMMERCIAL BLANK CHAMBER, SAFETY MARKED "SAFE" and EXTRACTOR MARKED "LOADED"... ALL MATCHED, EXC GRIPS AND STRAW AND MAG. VG to EXC FINISH (ORIG)..	\$275.00
35	6593	LUGER, SIMSON, 9mm, 4", #4116..This is the 1923 SIMSON. This is a Very IMPORTANT LUGER as it is One of the MANUFACTURE VARIATIONS..BLANK CHAMBER, SIMSON TOGGLE. ALL MATCHED, EXC ORIG FINISH..ALL PARTS are Simson Proofed. One Hell of a BUY for any collector.....	\$350.00
36	C271	LUGER, DWM/MAUSER, 9mm, 4"..ONE HELL OF A BUY..THE SUPER RARE ORDINANCE CUTAWAY. There are FEWER THAN 5 KNOWN..COMPLETE CUTAWAY..AND MINT..ORIG..	\$1750.00
37	6594	LUGER, MAUSER/DWM, 9mm, 4", #4982t..SØPER VARIATION..1933 SNEAK. This Luger is a MUST for all Collectors..Reciever marked WaA66..Blank Chamber, ALL MATCHED, MINT BORE, VG to EXC Finish, STRAWED PARTS..KENYON 238..STEAL.....	\$250.00
38	C271	THGER, OBERNDORF, 9mm, 4", #7185..RAREST VARIATION IN THIS CLASS..SEEN IN JONES. THE TOGGEL IS MARKED 1934 OBERNDORF, CHAMBER MARKED WITH A BANNER..2 Known. VG original and all Matched..Find another One.....	\$2000.00
39	6585	LUGER, MAUSER BANNER, 4 3/4, 30, #2312. THE RARE 1935 GNR MAUSER BANNER. SQ SAFETY, GNR on the Chamber, BANNER on the TOGGLE, Slim Tapped Barrel, MATCHED. MINT GNR..564 MADE, MINT STRAW AND GRIPS, 99% ORIGINAL..THE BEST..	\$675.00

ITEM	STOCK	DESCRIPTION	PRICE
40	6565	LUGER, KRIEGHOFF, 9mm, 4", #7315..THE FIRST FULL DATED KRIEGHOFF. DATED 1936 . THE GERMAN AIRFORCE LUGER made by Krieghoff. MINT BORE, STRAWED PARTS and MINT GRIPS. 98% ORIG FINISH..ALL MATCHED INCLUDING MAG. ..ONLY.....\$700.00	
41	6564	LUGER, Krieghoff, 9mm, 4", #7784..THE SECOND YEAR OF FULL DATED KRIEGHOFF. CHAMBER DATED 1937 HK.MINT BORE AND GRIPS..STRAWED PARTS. 99% ORIG RICH BLUE. ALL MATCHED SERIALS..Top of the Line.....AIRFORCE LUGER.....\$750.00	
42	JS5	LUGER, Krieghoff, 9mm, 4", #8215. CHAMBER DATED 1937 KRIEGHOFF. German AIRFORCE Luger. EXC BORE, MINT STRAW and GRIPS and MAG. EXC Finish..ALL MATCHED. This is a Hell of a Buy for the Collector.....\$675.00	
43	6589	LUGER, MAUSER, 9mm, 4", 196e. The 1935 MAUSER S/42. CHAMBER DATED with a "G". 63 Proofs. ALL MATCHED INCLUDING MAG. EXC STRAW, GRIPS and FINISH. A EXC BUY for a Collection Luger.....\$325.00	
44	S348	LUGER, MAUSER, 9mm, 4", #3649..The FIRST FULL DATED S/42. CHAMBER DATED 1936. Toggle Coded S/42. EXC Straw, Grips, 98% Orig. ALL MATCHED including Mag. This is a Hell of a Buy for a S/42.....\$275.00	
45	6538	LUGER, MAUSER, 9mm, 4", #4523r..NEAR MINT Chamber Dated 1939 Nazi Military. Togg Marked S/42. This is the Year of the Toggle Change. A Very desireable Collection Luger....Mech EXC...All Matched.....\$275.00	
46	6177	LUGER, MAUSER, 9mm, 4", #2785r..The FAMOUS 42 Coded Toggle Military, Chamber dated 1939. MINTY FINISH and GRIPS with 99% Blue and ALL MATCHED. TOPS..\$325.00	
47	6579	LUGER, 9mm, 4", MAUSER, #420d..CHAMBER DATED 1940 NAZI MILITARY TOGGEE CODED 42. THIS PIECE IS SO OUTSTANDING I WISH I OWN IT..COMPLETELY MINT..ORIG with a DEEP FINISH..ALL MATCHED with the No 2 MAG..MINT WALNUT GRIPS..TOPS.....\$345.00	
48	O.W3	LUGER, MAUSER, 4", 9mm, #6612r..THE FAMOUS and RARE MAUSER EASTERN AIRFORCE LUGER. MAUSER BUILT for KREIGHOFF. TOGGLE CODED 42 and CHAMBER DATED 41. The 41/42. ALL MATCHED SERIALS and 99% Orig Blue, N mint Bore..TOPS and ONLY.....\$450.00	
49	6587	LUGER, MAUSER, 4", 9mm, #8953t..CHAMBER DATED 41, CODED TOGGLE..BYF. The BYF 41. This piece was brought Back from a GI..ALL MATCHED, Nickel Plated, MINT IN AND OUT and MECH EXC..Black Plastic ORIG GRIPS.....ONLY,,,,,,,\$185.00	
50	6590	LUGER, MAUSER, 9mm, 4", #202. The FAMOUS BLACK WIDOW. CHAMBER DATED 41 Toggle Coded BYF. ALL MATCHED SERIALS and ORIG BLUE..EXC..MECH EXC..ONLY.....\$285.00	
51	6583	LUGER, MAUSER BANNER, 9mm, 4", #1654y..THE ELITE OF THE MAUSER LUGERS. CHAMBER DATED 1941. TOGGLE CODED WITH FULL MAUSER BANNER. EAGLE L and NAZI COMMERCIAL PROOFED. MINT BORE AND GRIPS, ALL MATCHED. SEAR SAFETY, NEAR MINT to MINT.99% ORIG..\$425.00	
52	6584	LUGER, MAUSER BANNER, 9mm, 4", #3186y. CHAMBER DATED 1942. TOGGLE with FULL MAUSER BANNER. SEAR SAFETY, EAGLE L and NAZI COMMERCIAL. ALL MATCHED SERIALS. MINT IN AND OUT..THE BEST.....\$450.00	
53	6547	LUGER, 9mm, 6", #NONE..THE FAMOUS 1969 CUTAWAY LUGER. ONLY 4 MADE with a 6" BARREL. This is a RARE VARIATION and MOST DESIREABLE to OWN..BOXED, MINT..\$800.00	
54	RS2	MAUSER, BROOMHANDLE =9mm, #43071..THE FAMOUS "RED" NINE MAUSER BOLO BH.. WITH a ORIGINAL LEATHER HOLSTER. This is a POLICE BH, 99% ORIG FINISH.. This Red 9 has a VERY RARE SU-4 PROOF..A OUTSTANDING MAUSER..THE BEST BAR NONE.....\$475.00	
55	6512	MAUSER, BROOMHANDLE, 30, #232339, 1912 MAUSER BH, 5.5" Barrel..MATCHED, MECH EXC, EXC BORE, 50/1000 Meter Sights, WOOD wood Grips, SPECIAL WIDE TRIGGER for SHOOTING. 100% NICKEL..MECHANICALLY SUBPERB..A SHOOTER.....\$225.00	
EXTRA SPECIAL:..ORIGINAL LEATHER HOLSTER FOR MAUSER BH 5.5 " ..EXC ORIGINAL.....\$50.00			

ITEM	STOCK		
56	6556	MAUSER, 25 Cal, #244819, RARE PORTUGUESE CONTRACT 1910 MAUSER POCKET 25 Cal. THIS VARIATION IS SEEN IN ALL THE MAUSER BOOKS..VERY RARE WHEN YOU FIND IT MINT..THIS IS A MINT ONE,,IN AND OUT.....BEAUTIFUL GRIPS..	\$150.00
57	6560	WALTHER, 32, #106527P. PRESENTATION WALTHER PP. NAZI ERA..MINT BORE and GRIPS. TOTALLY ENGRAVED, PRESENTATION: "DER KREISLEITER SEINEM FAHRER ZWISEHENBERGER!" Super Condition and a RARE NAZI PRESENTATION..ONLY.....	\$600.00
58	6520	WALTHER, 32, #974380..RARE NAZI ERA. MINT BORE, Grips, Extension Mag, 98%. GRIP STRAPS MARKED RFV 9914w .. TOPS..and a Rarer Variation...ONLY....	\$225.00
59	5601	WALTHER, pp, 32, #182847P. RARE PARTY GRIP MARKED NAZI PP. MARKED R.J. EXC to MINTY..98%, EXT MAG..TOPS and RARE.....	\$225.00
60	6522	WALTHER, PP, 32, #158630P. A RARE VARIATION that I haven't seen. ALL MATCHED with a EXTENSION MAG. 99% Orig Finish, SLIDE (RECIEVER) DATED 1940. NAZI Commercial Proofed..Tops and a EXC COLLECTION PP.....	\$200.00
61	6318	WALTHER, PPK, 32, #..NONE..TOTALLY IN THE WHITE..NEVER FINISH ..NO MAKERS NAME..BLACK GRIPS, EXT MAG..WHAT IS IT..EXPERIMENTAL???PX ???, LUNCH BOX?? What ever it is..Its a RARE PPK..and Valued over \$300.. SELL PRICED..	\$220.00
62	6560	WALTHER, PPK, NAZI, #36062K..PPK NAZI, 32. MINT BORE, EXC FINISH...ONLY	\$130.00
63	PC4	WALTHER, P-38, 9mm, #7082c. NAZI ERA P-38 CODED AC 42..EXC BORE and GRIPS EXC ORIGINAL FINISH..SUBPERB COLLECTION PIECE..ONLY.....	\$175.00
64	6550	WALTHER, P-38, 9mm, #25602..THE RARE MOD P-38. MINT IN AND OUT. MATCHED. WALTHER BANNER..WAFFENFABRIK-WALTHER-ZELLA MEHLSI(THUR). NAZI ERA...	\$350.00
	6549	WALTHER, 9mm, P 38 #9261f. P-38 Coded AC 44..MINT BORE and GRIPS, NEAR MINT-ORIG FINISH..ALL MATCHED	\$145.00
66	6545	WALTHER, P-38, 9mm #9205..CODED P-38..CYO..MINT BORE and GRIPS, MATCHED, MECH EXC. NAZI PROOBED....ORIGINAL...ONLY.....	\$145.00
67	6224	WALTHER, P-38, #9061c, 9mm..TOPS..EXC P-38 Coded AC-42 with a MATCHING MAG. VERY RARE to find a Matching Mag..NAZI Proofed. MINT BORE and GRIPS....	\$200.00
68	6465	WALTHER, P-38, 9mm, #5025K..SUPER RARE ..P-38 Coded SVW 46 ..One of a Kind that is IMPOSSIBLE to Find..MINT Bore and 100%..STEAL.....	\$315.00
69	6146	WALTHER, P-38, 9mm, #026735 P-38 CODED AC-45..THE "O" SERIES. MINT BORE and GRIPS. 99% ORIG BLUE..SUPER RARE VARIATION...a STEAL.....	\$250.00
70	S-5	NAMBU.8mm, #54721, NAGOYA B LTG..Coded 19.6. MINT BORE, Godd Finish, T-14, with MINT HOLSTER..SUPER BUY.....	\$115.00
71	S3	NAMBU, 8mm, #4248, THE VERY RARE PAPA NAMBU. This is a Collector Dream. It has a Holster and the Condition is Very Good...ONLY.....	\$300.00
72	6552	NAMBU, 8mm, #26876..TYPE 14..CODED 12.2..MINT BORE and GRIPS, EXC STRAW and Finish..ALL MATCHED with HOLSTER....SUPER BUY..ONLY.....	\$140.00
73	6555	NAMBU, 8mm, #3150..Type 14, CODED 18.11. MINT IN AND OUT with HOLSTER. NEW One of the Best..Large Guard.....	\$140.00
74	6553	NAMBU, 8mm, #2895, NAGOYA, CODED 3.7..Small Guard. MINT BORE and GRIPS, EXC BLUE..ALL MATCHED..COLLECTION QUALITY.....	\$140.00
75	6559	COLT:..1903 Second Issue, 32CAL..HARD RUBBER GRIPS, EXC BORE, VG FINISH and ALL MATCHED..MECH EXC..A STEAL.....	\$75.00

- 76 6554 ARMY 45 AUTO, #1064792, This is the U.S.SWITCH AND SINGLE..This is the FIRST TOTAL MINT US AND S I have had..MARKED U S & S Swissvale Pa.....\$300.00
- 77 6558 STEYR, 9mm, #3942v..This is a MINTY 1917 STEYR..98% Orig with a ORIG RARE HOLSTER with STRIPPER CLIPS and AMMO..TOP RIG and a Rare COMBINATION..\$150.00
- 78 6561 BERNARDELLI, 25 Cal, #37765..DATED 1951..IMPOSSIBLE TO FIND. This a TOTAL MINT 25 Cal AUTO and is a TOP CONDITION AUTO..A STEAL.....\$55.00
- 79 6513 SMITH and WESSON, 45, #19403..HOW DID THIS GET ON MY LIST??? A REVOLVER.. A RARE 1917 MODEL S AND W...45 Cal D.A..99% ORIG..MECH EXC.....\$150.00
- 80 RES SNAIL DRUM..2nd Issue, with COVER. THIS IS A RARE ONE..as it has a METAL CLIP attached to Drum for hooking the DRUM TO BELT..EXC ORIG.....\$220.00
- 81 RES1 2nd ISSUE LOADER..ORIGINAL, EXC CONDITION..A RARE ACCESSORY.....\$225.00
MORE SUBPERB LUGERS FROM A TOP COLLECTION
- 82 RG1 LUGER, DWM, 9mm, #1620..THE SUPER RARE DEATH-HEAD LUGER, DATED MILITARY DWM..1916..DEEP DEATH-HEAD over Date..TRUELY A EXC DEATH HEAD..ALL MATCHED. I have had only a FEW over the LAST SEVERAL YEARS....RARE.....\$700.00
- 83 RG2 LUGER, DWM, 9mm, 4". #410..THE SUPER RARE.."K.I 1933" LUGER..One of the MOST WANTED of the EARLY NAZI LUGERS. One of 2 I have had in the LAST 5 YEARS...YES 5 YEARS..DWM TOGGLE, CHAMBER DATED 1933 KI..ALL MATCHED and VERY GOOD PLUS..90%.....STEAL.... \$800.00
- 84 **SOLD** RG3 LUGER, DWM/MAUSER, 9mm, 4", #4258..THE MA MARKED RECIEVER..NAVY MAUSER. GRIPS or Grip Strap MARKED 0-2633 ..SAM COSTANZO TAKE NOTE..90% ORIG FINISH..MIXED Numbers..ORIGINAL..and VERY RARE.....
- 85 RG4 LUGER, MAUSER, 9mm, 4", #7225..ONE OF THE RAREST OF THE NAZI ISSUE MAUSERS ... IN FACT THIS RARE LUGER WAS SHOWN IN THE ARMS GAZETTE as being one of the RAREST DATED MAUSER MILITARY'S.. ASK..THE WORLD OF LUGERS.. CHAMBER DATED 1940..TOGGLE MARKED BYF..THE ONLY EXC ONE KNOWN except in the COLLECTION of the LEADING MAUSER COLLECTOR..RECIEVER MARKED H2AJT20..MATCHED...\$475.00
- 86 RG5 LUGER, DWM/MAUSER, 9mm, #3918r..The RARE SU-38 MARKED RECEIVER. Chamber is Blank. EXC STRAWED PARTS, 97% EXC FINISH, MATCHED..A RARE VARIATION....\$325.00
- 87 RG6 ~~THE~~ LUGER, DWM/SIMSON/MAUSER, 9mm, 4", #3106r..THE RARE SIMSON PROOFED LUGER with a MATCHING HOLSTER .A RIG..SEAR SAFETY..96% EXC ORIG BLUE, BLANK CHAMBER...A EXCEPTIONAL NAZI REWORK LUGER..A MUST.....\$325.00
- 88 RG7 LUGER, MAUSER/DWM, 9mm, #6797a..NAZI ERA...Chamber DATED 1918/20, DWM Toggle. BUT..THE RECIEVER IS MARKED WITH LARGE GW-3 ...What can you say after I SAY...MINT.....This is a GEM, a JEWEL.....\$400.00
- 89 6571 LUGER, MAUSER BANNER, 4", 9mm, #8204y..ONE OF THE RAREST BANNERS. CHAMBER DATED 42. THE TWO DIGET CHAMBER..JUST 42..EXC BORE, EXC BLACK PLASTIC (ORIG) GRIPS, and EXC FXO MAG..ALL MATCHED, Blued Parts, NAZI COMMERCIAL PROOFED ONLY VG to EXC BLUE..ALL MATCHED..RARE.....ONLY.....\$350.00
- 90 6567 LUGER, MAUSER BANNER, 30. 4 3/4. #2492v..THE RAREST GNR KNOWN..NOTE SERIAL.. THE HIGJEST NO KNOWN. ONLY Two of these Serials KNOWN. This is a 2nd Issue GNR..NOT YET PUBLISHED INFORMATION...THIS THANKS TO THE WORLD OF LUGERS. THIS IS THE NAVY GNR. MINT BORE and GRIPS, EXC STRAW and ORIG FINISH. SLIM TAPPERED BARREL, SQ Grip SAFETY, GNR on the CHAMBER...ALL MATCHED..ONLY..\$725.00

DON'T MISS THE MISSOURI ARMS COLLECTORS SHOW.JUNE 5-6..ST. LOUIS MISSOURI.THE FIRST SHOW..

THE WORLD OF LUGERS NEEDS YOUR HELP

WE NEED THE BANNER SERIAL RANGES..PLEASE SEND US YOUR SERIALS COMPLETE WITH SUFFIX'S and CHAMBER DATES...WE ARE COMPILING THIS INFORMATION FOR YOU THE COLLECTOR.....

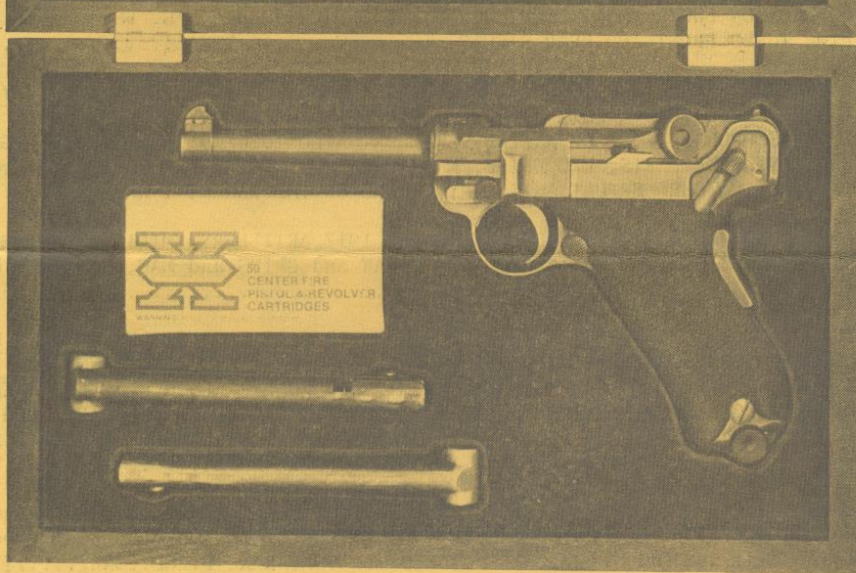
WE ALSO NEED NAVY PROPERTY NUMBERS. These are the Numbers on the BACK STRAP of the NAVY LUGERS..PLEASE..WE NEED YOUR HELP.....SAM AND I THANK YOU.....

ITEM STOCK

PAGE 7

- 91 6574 LUGER, BANNER, 9mm, 4" #1693.. SUPER RARE 1940 DATED MAUSER BANNER, One TWO I HAVE SEEN and Know Of. WHY?, First of all it DOESN'T HAVE STANDARD NAZI PROOFS for a BANNER..IT HAS ONLY the 655 and Eagle with NAZI PROOF on Right Side..NO EAGLE L, F. C..NO NAZI COMMERCIAL PROOF...MINT BORE, EXC GRIPS and ORIG BLUE..NEAR MINT, Blued Parts..THIS PIECE (THE OTHER ONE SOLD IN CALIF for Over \$1000.00) is Grossly UNDER PRICED..TOPS.....\$750.00
- 92 6525 LUGER, MAUSER, 9mm, 4", #6783e. RARE NAZI NAVY. 1940/42. PROPERTY MARKED N 4789. This is One of the RARE MAUSER \$2 Marked Toggles..Chamber Dated 1940. NEAR MINT BORE and FINISH and GRIPS..ALL ORIG FINISH. NAZI NAVY MAG....\$525.00
- 93 5327 LUGER, DWM, 9mm, 8", #5804h. CHAMBER DATED 1910 DWM ARTILLERY..TOP of the LINE COLLECTION LUGER. MINT BORE, STRAW and EXC GRIPS and MAG. 99% ORIG BLUE. FINE TUNED FRONT AND REAR SIGHTS..THE BEST..... STEAL.....\$600.00
- 94 6509 LUGER, ERFURT, 9mm, 8", #5786m. SUPER RARE DOUBLE DATED ERFURT ARTILLERY NAVY. I HAVE NEVER SEEN A 1917 DATED or 1920 DATED ARTILLERY alone a NAVY. THIS IS PROBABLY ONE OF A KIND..CHAMBER DATED 1920/1917, EXC BORE, VG PLUS BLUE, STRAWED PARTS, EXC GRIPS, NAVY PROOFED..M with ANCHOR Plus N Proofed. THIS ALL MATCHED ERFURT ARTILLERY is ONE OF THE RAREST I HAVE SEEN.....\$550.00
- 95 6524 LUGER, DWM, 9mm, 8", #2105g..CHAMBER DATED 1917 ARTILLERY. MILITARY..FINE TUNED REAR SIGHTS, VG FINISH (BLUE), EXC STRAW and GRIPS and MAG, VG BORE. MATCHED. THIS IS A EXC BUY for your....MECH EXC.....\$350.00
- 96 6179 LUGER, DWM, 30, 4 3/4, #6372..THIS IS THE SUPER RARE TEST EAGLE COMPLETE WITH HOLSTER..YES..COMPLETE..THIS IS PROBABLY THE RAREST 1900 RIG YOU CAN GET. 1900 TEST EAGLE, SQ GRIP SAFETY, SLIM TAPPED BARREL, RECESSED BREACH BLOCK-DISHED TOGGLES..ALL MATCHED, EXC FINISH AND STRAW, MAG AND GRIPS, 2nd Issue SAFETY, NARROW TRIGGER and Sq GRIP SAFETY..This is a \$2500 VALUE RIG for ONLY.....(REMEMBER ONLY 1000 TESTS WERE MADE).....\$1650.00
- 97 6387 LUGER, DWM, 16", 9mm, #1478..SUPER RARE 1920/23 STOEGER'S..Side of Receiver Marked A.F.STOEGER INC..ONLY 2 16' KNOWN..One of the Most Unusual Pieces I have had..99% Orig BLUE..ALL MATCHED...a VERY RARE PIECE..ONLY.....\$1900.00
- 98 6476 LUGER, DWM, 30, 5 7/8, #18831..SUPER RARE 1900 PORTUGUESE COMMERCIAL. NEVER before Advertized..PROTOTYPE BARREL..5 7/8, PROPERTY MARKED 84. Barrel Serialized and Portuguese Proofed..ALL MATCHED including MAG, EXC PLUS BORE and 98% Finish, EXC STRAW. RECESSED BREACH BLOCK, Dished Toggles, Sq Grip Safety....VALUED AT OVER \$2000.00.....ONLY.....\$900.00
- 99 6483 LUGER, DWM, 9mm, 6", #13907..1923 DWM/KRIEGHOFF..Rare 6" BARREL, Blank Chamber, and MINT BORE, GRIPS, EXC STRAW, 98% BLUE, MATCHED..Receiver MARKED HK..5. First time I have seen this One..A SLEEPER..VALUED OVER \$600...ONLY....\$325.00
- 100 6517 LUGER, KRIEGHOFF, 9mm, 4", #11660. TOTALLY MINT AND ORIGINAL 1942 DATED Krieghoff..Krieghoff Suhl Toggle..ALL MATCHED INCLUDING THE MAG. I have Only SEEN ONE BETTER..(MINE)..and Mines Not all MATCHED like this..THE BEST..\$1250.00
- 101 6533 LUGER, MAUSER, 9mm, 4", #3398s..SHOOTER. CHAMBER DATED 1937, Toggle Marked S/42. THATS all Matched with a EXC BORE and a NEARLY PERFECT FINISH..99%..ALL MATCHED EXCEPT GRIPS and MAG....A GREAT BUY.....\$195.00

**A QUALITY,
FRENCH FITTED,
HANDCRAFTED CASE
FOR YOUR LUGER,
ONLY \$45⁰⁰!**



That's right! Quality and pride of workmanship from the 19th century still exists today in Pelson French fitted Luger cases. Constructed entirely by hand of the finest woods and materials available with each case fitted to the individual model Luger. Plush lined in royal purple velvet with cartridge box and two magazine compartments. Exterior covered in tough vinyl with solid brass fittings. Completely American made, not an import they are available at \$45.00 each for the 9mm Parabellum with 4" barrel and the 7.65mm with 4 $\frac{3}{4}$ " barrel only. Custom cases are available for other Luger models. **SATISFACTION GUARANTEED.**

Ralph E. Shattuck
6661 Castle Drive
Birmingham, Mich. 48010

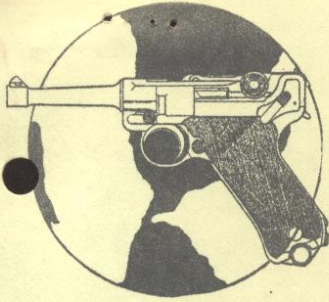
Sir: Please send me _____ Pelson French fitted cases for _____ model Luger. Enclosed \$45.00, plus \$2.00 for postage and handling on each case.

Total _____

Name _____

Address _____

State _____ Zip _____



World of Lugers



The Luger Belt Buckle

\$5.95

NEWS LETTER FROM THE WORLD OF LUGERS

FIRST OF ALL: ANY ONE READING THE SHOTGUN NEWS..BE CAREFUL..I WOULD SUGGEST BEFORE BUYING FROM ONE DOUGLAS JOHNSON OF 3318 OLIVER PL, NORTH MINN, MINN CHECK WITH JACK PROCTOR OF THE SAME TOWN, EARL LAMPARTER OF OAK LAWN ILL AND ROBERT SMITH OF MIAMI, FLA..

STOLEN: 1902 LUGER CARBINE #24141, MINT..FROM HERB PICKLES OF VIRGINIA..CONTACT ME.. STOLEN FROM SAM BROOKS; stolen between 11:30PM APR 3 and 6:20 AM APRIL 4th 1976 in VIRGINIA ALSO; ARTILLERY DOUBLE DATE NAVY #926c, DATED 1920/1917 DWM; 1923 SIMSON and CO, #5981, 9mm, MINT; K DATED S/42, 9mm, #618, Proofed O-37, 90%; G dated S/42, 9mm, #6289a proofed B90 S-92, 90%; S/42 Dated 1936, #7906d, MINT; 1939/42, #7884u, 9mm, 95%; 41/42 #3524n, No P-08 on Frame, 97%; MAUSER BANNER DATED 1941, 9mm, #1763y, Eagle L, 100%; BYF DATED 42, #4702c, Eagle 135, 92%; LATE S CODED KRIEGHOFF, #4004, 98%; P-38 Coded BYF 44, #4312v, 98%; P-38 Coded AC 44, #3038i, 98%;

OK COLLECTORS..LET'S HELP OUR FRIENDS..A REWARD IS OFFERED FOR THE RECOVERY OF THE ABOVE LUGERS FROM THE WORLD OF LUGERS. JUST CONTACT EITHER SAM COSTANZO OR RALPH SHATTUCK..

BOOKS TO HELP YOU COLLECT

LUGER MANUAL \$2.00 POSTAGE INCLUD FOR THIRD CLASS MAIL
WORLD OF LUGERS BY SAM COSTANZO ..SERIALS NUMBERS OF LUGERS ISSUED TO GERMAN AGENTS IN THE UNITED STATES BETWEEN 1913 and 1916...\$5.50 POST PAID
LUGERS AT RANDOM By Charles Kenyon..400 Pages, 500 Photos..THE BOOK ON LUGERS.. \$16.50 PPD
U.S TEST TRIALS 1900 LUGERS..COMPLETE REVISED ADDITION..BY M. REESE..\$5.50 PPD
LUGER TIPS VOL 1..BRAND NEW ..BY REESE..HISTORY, VITAL BASIC STATISTICS on the Luger
A MUST FOR ALL BEGINNERS and ADVNCE COLLECTORS.....\$7.50 PPD