

The Luger Journal

NUMBER TWENTY TWO

THE LUGER JOURNAL IS PUBLISHED BY ROBERT B. MARVIN, POST OFFICE BOX 12206, FLANTATION, FLORIDA. ALL RIGHTS ARE RESERVED.

SUBSCRIPTION : \$5.00 FOR 12 ISSUES. EACH SUBSCRIBER MAY HAVE 20 WORDS OF AD SPACE FREE PER MONTH, SPACE PERMITTING, EACH ADDITIONAL WORD 2¢.

SINGLE COPIES 50¢

EDITORIAL COMMENT

We are deeply pleased with the warm reception that this paper has received from our readers the past few months. We have received many warm comments on our new and improved use of photographs, made possible by improved new techniques in photo-reproduction, and those that were kind enough to write have our thanks. Incidentally we need more photos for future issues—both common and rare Lugers—so if you have any snapshots send them in and let us take a look at them. If we run them the contributor will receive the credit for the photo.

We are happy to report that quite a few readers wrote in as contributor-supporters for our new, soon to be published, IDENTIFICATION AND PRICING OF LUGER PISTOLES. We thank them for their support. If any other readers wish to be listed in this new work, or are interested in just helping with our work please refer to last months issue, page FIVE, for details. We hope to go to press on this soon so if you want your name listed please let us hear from you as soon as possible.

Mauser Lugers

In this issue the Mauser story continues with the S/42 dated series, dated either 1936, 1937, 1938, 1939 or 1940 (all four digit dates). In a way these are the "classic" Mausers for they were made in the "best" years, so to speak, of the Nazi era. The THIRD REICH was at its peak and the best man-power and materials were allocated to the production of these side-arms. While they are not nearly "rare", in the real sense of the word, they are, in better collector condition not nearly as common as they were once considered. They are fine pieces, and most shoot very well, and that is the trouble with the decreasing supply of these items. Many were, and are, being used as shooters. The piece in this article was rescued from an ardent shooter who put many, many rounds through this all matching rig, with two matching magazines and perfect matching holster. When I found it it was just about ready to be converted, as he called it, to a 6" target barrel. While this is not the rarest pistol in the world, the thought of altering it did give me heart-burn.

BACKGROUND

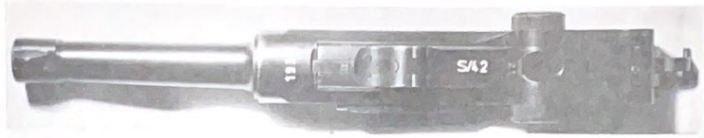
There is little historical information that needs to be added, at this point, the S/42 DATED is a continuation of the Mauser production S/42 coded Lugers that began with the K-Dates, continued with the G-Dates, and which ended with these dated types. Just why Mauser choose to drop the code year is really just a matter of speculation, though it is probably accurate to suppose that the Germans no longer found it necessary to conceal the date of manufacturer of their arms.

DESCRIPTION

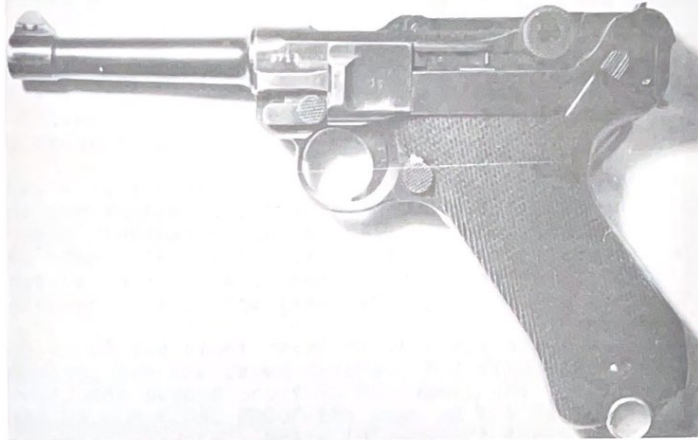
Number 6713 n is, as stated above, excellent for this type Luger. There are only a very few wear spots on this piece and it is typical in every way. The toggle picture in photo No.1 shows the deep, typical Mauser imprint, and the strictly military numbering system employed by Mauser.

(CONTINUED ON PAGE THREE)

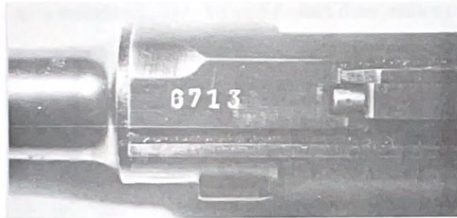
The Luger Journal



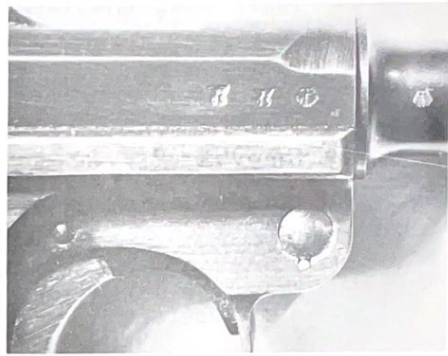
No. 1



No. 2



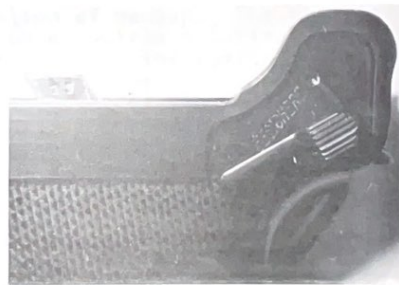
No. 3



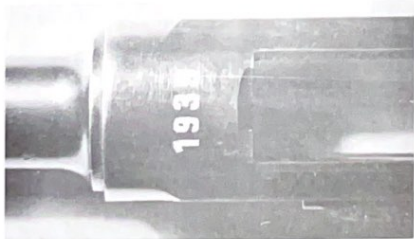
No. 5



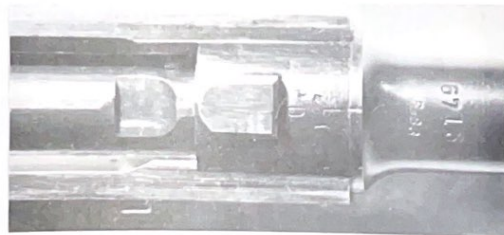
No. 4



No. 6



No. 7



No. 8

Note in photo No. 7 the tool marks that run across the chamber area. This too is common to Mauser military Lugers of this era, though the K-Dates, featured in last months issue, had a more "commercial" finish similar to the early DWM Lugers. Incidentally the comparison between DWM and the K-Dates in last months issue was made by THE LUGER JOURNAL and was between two of our selected pieces. The quality of other K-dates may be better or worse, depending on many things, and of course the quality of DWM pieces varied greatly as well.

Tool marks are quite evident in most of the pictures in this issue, though the internal bearing surfaces are as smooth as glass. The parts were well fitted and the piece works well, is tight fitting, but has no binding spots in operation.

In photo No. 4 is a close-up of the right grip. The checkering is finely done and evenly cut, though the checkering on the slope area is not as well finished as on the flat surfaces. The left grip is comparable. The color is the original reddish tinted walnut, well aged but not yet stained with gun oil or sweat. Both grips fit very well and are marked with the last two digits of the serial number.

Photo No. 5 is of the right receiver area and shows one example of Mauser proofing, for the dated S/42's. The first proof is the Eagle over 63 proof, the second proof is the same, the third and final proof is the MAUSER FINAL PROOF-the same as the FINAL PROOF on last months illustrated K-Date. While this is not the most common combination of proofing for dated S/42 Lugers it cannot be considered rare. A thought about proofing at this point is in order and that is that proofing by itself seldom makes any particular Luger rare. While a particular Luger may have peculiar proofs that don't agree with the accepted standard of what that Luger is supposed to have, in the way of proofing, such variations in proofing seldom increase the value of a piece to any major degree. There are exceptions of course but as in the case of this particular Luger, proofed as it is with earlier proofs than the chamber date indicates, does not really, in my opinion, greatly alter the value of this Luger.

In photo No. 6 can be seen one manufacturing variation of the Luger frame and that is the bulge that is apparent in the rear most portion the frame area. While many Mauser Lugers have a flat, straight up and down frame in this area, many other Mausers have this bulge. We do not know why there is this variation in frame design and just out of curiosity if any readers have any ideas on this subject let us hear from them.

FINISH

The finish of this piece is another variation of Mauser. The blue is the speed blue type, blued all over without any straw coloring. The finish varies from part to part to a minor degree, the ejector being a more brownish color than the rest of the toggle assembly. The frame portion is a little less bright than the top part of the toggle due to the higher polish put on the toggle area. In the few areas where the blue is worn off bright shiny metal shows through. Over-all the piece is about 98% original blue

VALUE

A few years ago this complete rig could be bought, when found, for about \$75. to \$100. In this condition and with 2 matching clips and holster. Today, current market prices vary from \$125.00 to \$175.00 depending on area, demand, trade or cash and a few other variables. Price in the Florida area is about in the middle if it is a collector selling, toward the higher figure if its from a shop or dealer. The great variable is CONDITION. Naturally all collectors look for condition but in the more common, or less scarce models-depending on how you care to put it, condition is the PRIME FACTOR and does mean a great deal in price.