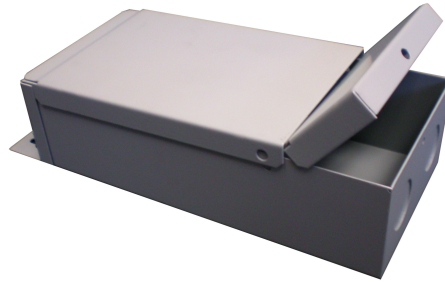




SPECIFICATION SHEET

12VDC MAGNETIC DIMMABLE LED POWER SUPPLIES



FEATURES

- 3 YEAR FREE REPLACEMENT WARRANTY
- FULLY DIMMABLE, WITH LOW-VOLTAGE MAGNETIC DIMMER
- 1/8" STEEL, POWDER COATED NEMA 3R CASE
- STANDARD WITH MANDATORY SECONDARY PROTECTION
- MEET CLASS 2 OUTPUT LIMITS
- 12 VOLT "DC" RATED OUTPUT
- MEETS OR EXCEEDS ALL UL, CUL, ANSI/UL, CSA REQUIREMENTS.

REQUIREMENTS

- MEETS THE REQUIREMENTS FOR UL STANDARDS 2108 AND 1838
- MANDATORY SECONDARY PROTECTION, AS STATED IN THE NATIONAL ELECTRIC CODE ARTICLE 411, (1993, 1996, 1999, 2002, 2005 AND 2008)
- MAY BE USED WITH INDIVIDUAL "LISTED" COMPONENTS TO MEET "SYSTEM" REQUIREMENTS, AS LONG AS ALL PARTS LISTED TO SAME ANSI/UL STANDARD

	120 WATT	180 WATT	240 WATT	300 WATT
PART NUMBER	SEB12DC-120W-3R	SEB12DC-180W-3R	SEB12DC-240W-3R	SEB12DC-300W-3R
PRIMARY VOLTAGE	120VAC-1A MAX	120VAC-1A MAX	120VAC-1A MAX	120VAC-1A MAX
OUTPUT VOLTAGE	12VDC-10A MAX	12VDC-15A	12VDC-20A MAX	12VDC-25A MAX
BREAKERS	2x5A	3x5A	4x5A	5x5A
FREQUENCY	60 Hz	60 Hz	60 Hz	60 Hz
DIMENSIONS	14" x 8" x 5"	14" x 8" x 5"	14" x 8" x 5"	14" x 8" x 5"
WEIGHT	10 LBS.	12 LBS.	4 LBS.	17 LBS.