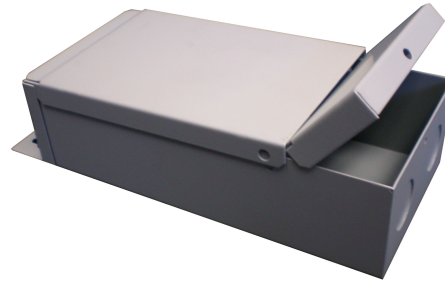




SPECIFICATION SHEET

24VDC MAGNETIC DIMMABLE LED POWER SUPPLIES



FEATURES

- 3 YEAR FREE REPLACEMENT WARRANTY
- FULLY DIMMABLE, WITH LOW-VOLTAGE MAGNETIC DIMMER
- 1/8" STEEL, POWDER COATED NEMA 3R CASE
- STANDARD WITH MANDATORY SECONDARY PROTECTION
- MEET CLASS 2 OUTPUT LIMITS
- 24 VOLT "DC" RATED OUTPUT
- MEETS OR EXCEEDS ALL UL, CUL, ANSI/UL, CSA REQUIREMENTS.

REQUIREMENTS

- MEETS THE REQUIREMENTS FOR UL STANDARDS 2108 AND 1838
- MANDATORY SECONDARY PROTECTION, AS STATED IN THE NATIONAL ELECTRIC CODE ARTICLE 411, (1993, 1996, 1999, 2002, 2005 AND 2008)
- MAY BE USED WITH INDIVIDUAL "LISTED" COMPONENTS TO MEET "SYSTEM" REQUIREMENTS, AS LONG AS ALL PARTS LISTED TO SAME ANSI/UL STANDARD

	24 WATT	40 WATT	60 WATT	96 WATT
<b>PART NUMBER</b>	SEB24AC-24W-3R-277	SEB24AC-40W-3R-277	SEB24AC-60W-3R-277	SEB24AC-96W-3R-277
<b>PRIMARY VOLTAGE</b>	277VAC-1A MAX	277VAC-1A MAX	277VAC-1A MAX	277VAC-1A MAX
<b>OUTPUT VOLTAGE</b>	24VAC-1A MAX	24VAC-2A	24VAC-2.5A MAX	24VAC-4A MAX
<b>BREAKERS</b>	1x1A	1x2A	1x2.5A	1x4A
<b>FREQUENCY</b>	60 Hz	60 Hz	60 Hz	60 Hz
<b>DIMENSIONS</b>	8.5" x 3.5" x 2.5"	8.5" x 3.5" x 3"	8.5" x 3.5" x 3"	8.5" x 3.5" x 3"
<b>WEIGHT</b>	3 LBS.	3.5 LBS.	5 LBS.	5 LBS.