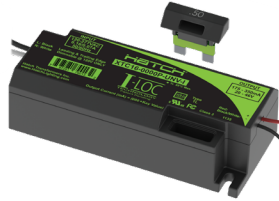


I-LOC KEY PROGRAMMABLE CONSTANT CURRENT LED DRIVERS

XTC



- Plastic Housing
- Side Lead
- Phase
- 16W-34W
- 175mA-1050mA
- Smallest Form Factor

XAC



- Metal Housing
- Side Lead
- Phase or 0-10V
- 16W-34W
- 175mA-1050mA

XRC



- Metal Housing
- Bottom Feed
- Phase or 0-10V
- 16W-34W
- 175mA-1050mA

The I-LOC family of Key Programmable Constant Current LED Drivers use a 'pick and click' technology for rapidly programming the output current. Featuring a full set of keys that allow each driver to be programmed down to 50% of the maximum output current, no additional programming tools or software are required. This reduces driver inventory and provides maximum flexibility when it comes to factory operations.

KEY BENEFITS FOR OEMs

- Faster speed to market
- Fewer SKUs to stock
- No special training
- No extra programming equipment
- Cross platform capability

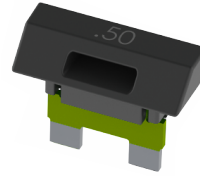
I-LOC MODEL SELECTOR GUIDE

| Part Number | Max. Power | Output Current Range | Output Voltage Range | Dimming | Leads |
|-------------------|------------|----------------------|----------------------|----------|--------|
| XTC16-0350P-UNV-I | 16W | 175-350mA | 24-46VDC | Phase | Side |
| XAC16-0350P-UNV-I | | | | | Side |
| XRC16-0350P-UNV-I | | | | | Bottom |
| XAC16-0350Z-UNV-I | | | | 0-10V | Side |
| XRC16-0350Z-UNV-I | | | | | Bottom |
| XTC32-0700P-UNV-I | 32W | 350-700mA | 24-46VDC | Phase | Side |
| XAC32-0700P-UNV-I | | | | | Side |
| XRC32-0700P-UNV-I | | | | | Bottom |
| XAC32-0700Z-UNV-I | | | | 0-10V | Side |
| XRC32-0700Z-UNV-I | | | | | Bottom |
| XTC34-1050P-UNV-I | 34W | 525-1050mA | 14-32VDC | Phase | Side |
| XAC34-1050P-UNV-I | | | | | Side |
| XRC34-1050P-UNV-I | | | | | Bottom |
| XAC34-1050Z-UNV-I | | | | 17-32VDC | 0-10V |
| XRC34-1050Z-UNV-I | | | Bottom | | |

*All models can be used in non-dimming applications.



I-LOC KEY PROGRAMMABLE CONSTANT CURRENT LED DRIVER KEYS



Hatch I-LOC LED drivers give designers an easy way to optimize fixture designs and specification documents with selectable output current in lower wattage drivers. Manufacturing engineers like the simple process documentation and ease of integration into the production flow without adding computer workstations, software management, cables, or programming hardware.

The chart below gives the list of keys and the output current that each will program for the LED drivers. Simply choose the wattage, select the output current from the chart, pick the key, and click it into the driver. The keys are interchangeable across the model numbers and allow customization of the output current from 100% to 50%.

I-LOC LED Drivers feature either phase dimming or 0-10V dimming. The 0-10V dimming designs will dim down to 1% of the adjusted output current.

For complete specifications, please visit hatchlighting.com to view full product performance and output graphs.

I-LOC KEY SELECTOR GUIDE

| 16W MODELS | | 32W MODELS | | 34W MODELS | | Key Part Number | Drive Factor/ Key Label |
|---------------------|------------------|---------------------|------------------|---------------------|------------------|-----------------|----------------------------|
| Output Current (mA) | Output Power (W) | Output Current (mA) | Output Power (W) | Output Current (mA) | Output Power (W) | | |
| 350 | 16 | 700 | 32 | 1050 | 34 | XA100 | 1.00 |
| 343 | 16 | 686 | 32 | 1029 | 33 | XB098 | 0.98 |
| 333 | 16 | 665 | 31 | 998 | 32 | XC095 | 0.95 |
| 326 | 15 | 651 | 30 | 977 | 32 | XD093 | 0.93 |
| 315 | 15 | 630 | 29 | 945 | 31 | XE090 | 0.90 |
| 308 | 15 | 616 | 29 | 924 | 30 | XF088 | 0.88 |
| 298 | 14 | 595 | 28 | 893 | 29 | XG085 | 0.85 |
| 291 | 14 | 581 | 27 | 872 | 28 | XH083 | 0.83 |
| 280 | 13 | 560 | 26 | 840 | 27 | XI080 | 0.80 |
| 273 | 13 | 546 | 26 | 819 | 26 | XJ078 | 0.78 |
| 263 | 13 | 525 | 25 | 788 | 26 | XK075 | 0.75 |
| 256 | 12 | 511 | 24 | 767 | 25 | XL073 | 0.73 |
| 245 | 12 | 490 | 23 | 735 | 24 | XM070 | 0.70 |
| 238 | 11 | 476 | 22 | 714 | 23 | XN068 | 0.68 |
| 228 | 11 | 455 | 21 | 683 | 22 | XO065 | 0.65 |
| 221 | 11 | 441 | 21 | 662 | 22 | XP063 | 0.63 |
| 210 | 10 | 420 | 20 | 630 | 21 | XQ060 | 0.60 |
| 203 | 10 | 406 | 19 | 609 | 20 | XR058 | 0.58 |
| 193 | 9 | 385 | 18 | 578 | 19 | XS055 | 0.55 |
| 186 | 9 | 371 | 17 | 557 | 18 | XT053 | 0.53 |
| 175 | 8 | 350 | 16 | 525 | 17 | XU050 | 0.50 |