

Do You Have a Lead Service Line?

Answer a few questions to protect your family's health and help your utility identify the drinking water service line materials in your community

NEBRASKA

Good Life. Great Resources.

DEPT. OF ENVIRONMENT AND ENERGY

Adverse Health Effects of Lead

Drinking water that contains lead can damage a developing brain. It is especially harmful for children 6 and under and in adults, lead can increase blood pressure. With your help, your utility can reduce elevated levels of lead in your community.

Source of Lead

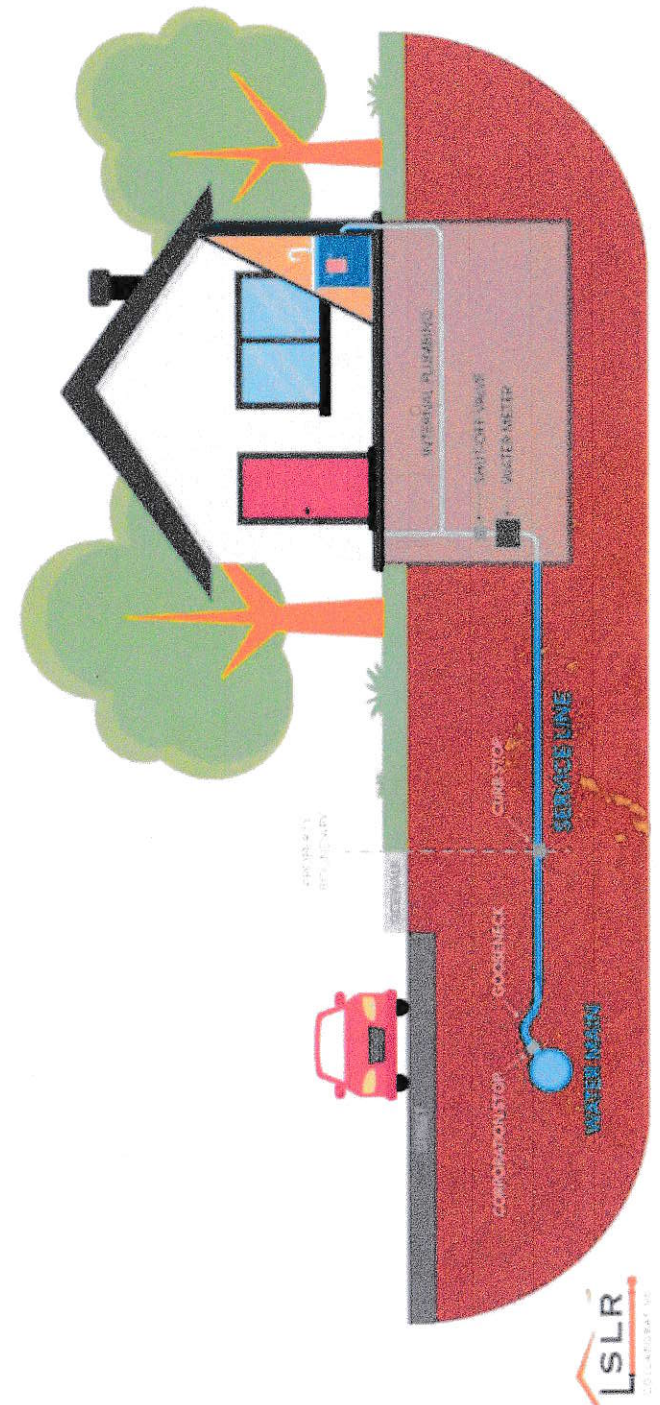
Your water system tests for lead levels regularly, but as you know, the source of lead in drinking water is often lead pipes and plumbing components in the distribution system that provides drinking water to your home.

Service Lines

Drinking water for your home is delivered from the water main to your home by a service line. Service lines can contain lead. Identifying homes with lead service lines or lead components is crucial because corrosion of these materials over time can cause lead to accumulate in your drinking water.

Take Action Now

Be a part of the solution.
This is a large project and your utility needs your help!



How to Determine If I Have a Lead Service

Check your records. Have you completed maintenance on your service line? Do you know when your home was built? If your home is older than 1988 and has the original service line or plumbing, then your home may have a lead service line or a lead component.

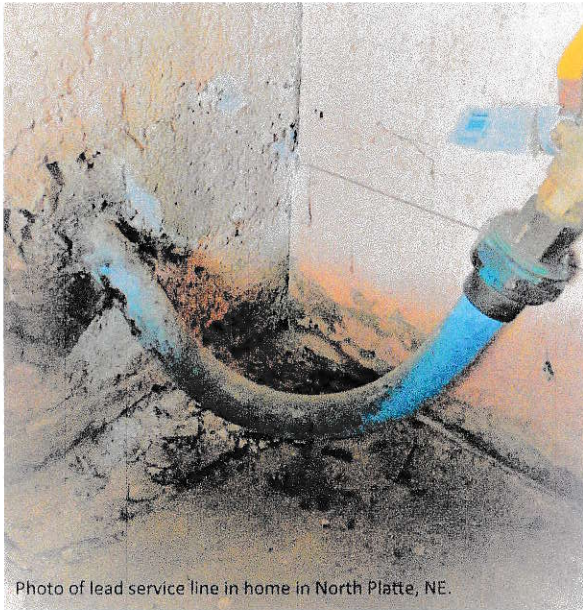


Photo of lead service line in home in North Platte, NE.

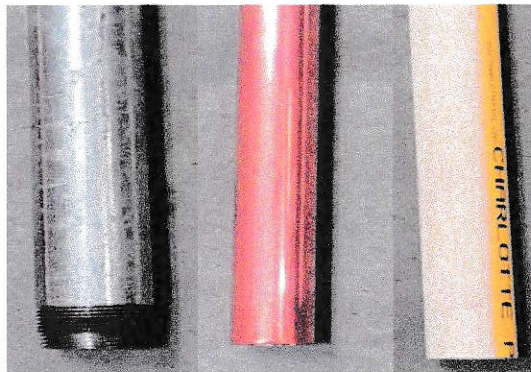
Inspect the service line yourself. You can save time and money and inspect the service line yourself. These lines typically enter your home through the wall facing the street on the lowest level but each setup can be unique to each home. If you do not own your home, please contact the homeowner for this information.

Is it Lead?

Start with a magnet or scratch test. Gently scratch the surface of the pipe with a coin. If the pipe is soft, easily scraped, silver, and a magnet doesn't stick, it is most likely **lead**.

If Not Lead, Then What ?

1. Does a magnet stick? If so and the line is dull grey when scratched, this portion of the service line is **galvanized steel**.
2. If the magnet doesn't stick, it is same color as a penny when scratched or has greenish blue build up, this portion of the service line is **copper**.
3. If the magnet doesn't stick, it is white-ish yellow or grey, is joined with a clamp, screw or glue, this portion of the service line is **plastic or Chlorinated polyvinyl chloride (CPVC)**.



If you are still unsure about the materials present and have questions contact us.

Sources: EPA.gov, Lead Service Line Replacement Collaborative, "How Can I Find Out If I Have a Lead Service Line?" Betanzo, 2020.

Please Provide the Following Information

Name: _____

Address: _____

Year home was built: _____

Is the original Service Line material still present? (Yes, No or Unknown):

Service Line Material (Lead, Non-Lead, Galvanized or Unknown):

Are there other Lead Materials present? (Unknown, None, Goose Neck, Pig Tail, or other):

Once complete, please return this flyer to your water utility

