

**2015  
East Polk  
Soil and Water  
Conservation District  
Annual Plan of  
Operations**

## East Polk SWCD 2015 Annual Plan

### Mission Statement:

The purpose of the District as granted by Minnesota Statutes 103C:

The misuse of soil and water resources of the state and its effects on the health, safety, and general welfare of each citizen of the state, brought about the establishment of the 91 Soil and Water Conservation Districts in Minnesota. The Districts, as originally organized, were to offer assistance in rural areas only. In 1972, the Minnesota Legislation recognized the valuable role Districts could play in urban areas and amended Chapter 40 to bring all land areas of the state under the authority of the Districts. The purpose of the districts is to assist landowners in applying proper practices for the conservation of soil erosion, land resource planning and development, reduction of siltation, and flood prevention. Also included is the conservation development, utilization and management of the water of the state, preserving natural areas and the fish and wildlife which inhabit them. The districts also have the authority to guide and assist in the wise use of public lands.

The 2015 Annual Plan addresses the priority goals of the SWCD Board of Supervisors. The Board of Supervisors adopted the County's Local Water Management Plan as the Comprehensive Plan for the District. The District has also adopted the Biennial Budget Request (BBR) submitted to BWSR as their Annual Plan. This plan is a supplement to the BBR.

The purpose of this plan is to protect land and water resources through the promotion and implementation of Best Management Practices through the County and associated Watersheds. The plan will focus on four priority areas of concern. For detailed discussions refer to the County's Local Water Management Plan. This plan also makes reference to Polk County's Feedlot Plan. Both plans are available in the District office.

### **Purpose of the Local Water Management Plan:**

The purpose of the updated Local Water Management Plan (LWMP) is to identify existing and potential problems and opportunities for protection, management and development of water resources and related land resources in Polk County. Pursuant to the requirements of MN. Stat. 103B311 subd.4, the five requirements of this plan are as follows:

1. The plan must cover the entire county.
2. The plan must address problems in the context of watershed units and groundwater Systems.
3. The plan must be based upon principals of sound hydrologic management of water, Effective environmental protection, and efficient management.

4. The plan must be consistent with local water management plans prepared by counties and watershed management organizations wholly or partially within a single watershed unit or ground water system.
5. The plan will cover a ten year period (2012 – 2022) with an implementation plan that will cover a five year period (2012 – 2017) and will then be update for the remaining five years.

### **PRIORITY CONCERN I**

The Polk County Local Water Management Plan will focus on protection and enhancement of surface water quality. Specific areas of focus will be:

- Lake Region in the eastern part of the county, with specific focus on the human impacts.
  - Increases in development around smaller, non-recreational lakes and larger wetland complexes should be assessed to determine if adverse impacts have affected the water quality of these smaller bodies of water.
  - For nearly all of the lakes in this ecoregion phosphorus is the limiting factor. Major management efforts related to water quality are directed at limiting the amount of phosphorus loading into the lakes.
  - Sediment loading has also become a major concern to the water quality of the lakes. Proper land use management and implementation of Best Management Practices needs to be analyzed and addressed.
- Surface water and ground waters in the western part of the county.
  - The City of East Grand Forks receives its public water supply from the Red Lake River.
  - The Red Lake River is impaired for turbidity and management efforts should focus on sediment loading into the Red Lake River and its tributaries.
- In addition to the above mentions specific areas of concern for Polk County, The County Board, Watershed Districts and SWCD's will actively pursue efforts to address surface water quality concerns within the county.

Although surface water is of primary concern for Polk County we will be responsive to the need to monitor and protect our groundwater resources. We will participate to our fullest capacity but state and federal agencies such as Minnesota Department of Health (MDH), and USGS will need to be the primary source for groundwater protection and management.

### **PRIORITY CONCERN II**

Due to the fluvial geomorphic characteristics of the Red River of the North Basin, Polk County is subject to frequent flooding. Some factors such as topography and increase precipitation are unmanageable, but other factors such as flood plain encroachment, channelization of waterways, land use practices and effective private drainage into public systems, are factors that can be assessed for *Best Management Practices*.

- Polk County Local Water Management Plan will focus on the quantity of water passing through the County and its associated watersheds by inventorying, assessing and evaluating the drainage infrastructure.

### **PRIORITY CONCERN III**

Polk County is concerned with the preservation and enhancement of its natural resources. The geology of Polk County is divided into 3 distinct areas; the glacial-lake plain, glacial lake washed till plain and glacial moraine region. These major areas, because of their size, unique geographical features, and wide diversity of natural resources are of significant benefit to the area and citizens.

- Polk County in cooperation with other local, state, and federal agencies will work to restore, enhance and protect these areas through programs and projects that accomplish this; cautious it is not done at the expense of the local economy.

### **PRIORITY CONCERN IV**

Polk County Local Water Management Plan will identify any new or yet to date undiscovered exotic and invasive species for prevention and management practices.

# Polk County Water Plan Goals and Objectives

## Priority Concern #1

The Polk County Local Water Management Plan will focus on protection and enhancement of surface water quality. Specific areas of focus will be:

- Lake Region in the eastern part of the county, with specific focus on the human impacts.
  - Increases in development around smaller, non-recreational lakes and larger wetland complexes should be assessed to determine if adverse impacts have affected the water quality of these smaller bodies of water.
  - For nearly all of the lakes in this ecoregion phosphorus is the limiting factor. Major management efforts related to water quality are directed at limiting the amount of phosphorus loading into the lakes.
  - Sediment loading has become a major concern to the water quality of the lakes. Proper land use management and implementation of Best Management Practices needs to be analyzed and addressed.
- Surface water and ground waters in the western part of the county.
  - The City of East Grand Forks receives its public water supply from the Red Lake River.
  - The Red Lake River is impaired for turbidity and management efforts should focus on sediment loading into the Red Lake River and its tributaries.
- In addition to the above mentions specific areas of concern for Polk County, The County Board, Watershed Districts and SWCD's will actively pursue efforts to address surface water quality concerns within the county.
- Although surface water is of primary concern for Polk County we will be responsive to the need to monitor and protect our groundwater resources. We will participate to our fullest capacity but state and federal agencies such as Minnesota Department of Health (MDH), and USGS will need to be the primary source for groundwater protection and management.

**Goal:** Improve the water quality of rivers and streams from the point they enter Polk County. Our goal is to attain/maintain a fishable/swimmable status of all lakes in the county, with the overall goal for all waters in Polk County to meet or exceed state water quality standards.

To meet this goal Polk County will need to coordinate its efforts with those having authority/interest to attend to water quality concerns in the watersheds shared with Polk County.

Until additional targeting efforts are applied the following have been identified as the county's priority project areas based on a collaborative approach to water quality issues, readiness of projects, and willingness of project stakeholders. These and other future projects will be further defined and identified in the SWCD annual planning process.

Priority Areas: Projects identified in the Sand Hill River Watershed include the upper reaches of the Sand Hill Watershed, Fertile Airport site located west of Fertile, Carlson site located west of Winger, Environmental Learning Center stream bank erosion project, and ditch systems that

drain within 1 mile of a river or a county ditch system. Other potential projects include the Maple Lake Diversion Clean Water project, areas within 1 mile of a well head protection area, the sealing of unused and unsealed wells, educate, market and install Ag BMPs based with whole farm planning. Priorities around the lakes region include educating shoreland owners on lake-scaping, working with new developments on natural environmental lakes, and lake shed assessments on Union, Sarah and Maple Lake and wetland retention to improve water quality entering Lake Sarah.

**1) Objective:** Identify areas of agricultural land use, especially in those areas with sensitive ground water and surface water resources for the installation of erosion and sediment control practices to reduce sedimentation into rivers, lakes, and wetlands with priority given to land with a Land Management Plan. Pursue funds to do Land Management Plans to accelerate implementation on needed areas with priority to source water protection.

- Action: Install BMP's to address the resource needs such as grassed waterways, sediment control basins, side inlet pipes, minimum tillage or no-till.
- Action: Develop a cost share program, which may supplement existing programs.
- Action: Provide technical assistance.
- Action: Provide financial support by seeking grant, Ag BMP loans, or working with agency/ special group partners (example such as NRCS, Deer Hunters Assoc, Ducks Unlimited, Pheasants Forever, and Turkey Federation).
- Action: Target areas for land retirement programs into RIM, CRP, WRP, walk-in- lands, wetland banking, or other programs available.
- Action: Apply targeting tool to acres of the county.

**2) Objective:** Maintain and where practical improve the water quality of rivers, lakes, and groundwater resources.

- Action: Utilize monitoring data to establish an attainable range for water quality.
- Action: Continue to support the Red River Basin River Watch Program.
- Action: Continue participation in the Citizen Stream Monitoring Program.
- Action: Continue taking water elevation readings on designated lakes.
- Action: Continue MNDNR observation well readings.
- Action: Continue citizens' rainfall monitoring program.
- Action: Set up lake monitoring programs.
- Action: Implement the Lake Improvement Districts lake plans.
- Action: Implement the Watershed District plans.

**3) Objective:** Assist in the development of Major Watershed Restoration and Protection Project (MWRPP) including TMDL's for waters listed as impaired and Protection Plans for surface waters not impaired.

- Action: Use resources to assist with and confirm listed waters on the TMDL impaired list.
- Action: Develop a water quality monitoring program.
- Action: Pursue grants and funding opportunities that will support the county's surface water protection and improvement efforts.
- Action: Once TMDL Implementation Plans are developed, high prioritize their implementation.

**4) Objective:** Promote and educate the citizens of Polk County about the wise use of our natural resources as it pertains to water quality.

- Action: Participate at the Polk County fair with educational displays.
- Action: Participate in presentations to schools, River Watch, agency meetings, and other educational events.
- Action: Put out timely news releases and newsletters.
- Action: Conduct tours and demonstrations.

**5) Objective:** Polk County has 82 feedlots that are registered, with an additional 35 smaller operations that are not required to be registered. Many of these feedlots are located next to rivers, lakes or wetlands that may have the potential to impact water quality. Polk County has an approved Animal Feedlot and Manure Management Plan.

- Action: Conduct site visits and inspection as required in the County Feedlot Plan.
- Action: Provide landowners information on feedlot registration, permitting, regulations, and rule requirements.
- Action: Provide educational and technical information.
- Action: Seek grants or cost share for financial assistance to correct issue with priority given to riparian lots, and high priority to those on impaired waters.

#### **Priority Concern #2**

Due to the fluvial geomorphic characteristics of the Red River of the North Basin, Polk County is subject to frequent flooding. Some factors such as topography and increase precipitation are unmanageable, but other factors such as flood plain encroachment, channelization of waterways, land use practices and effective private drainage into public systems, are factors that can be assessed for *Best Management Practices*.

- Polk County Local Water Management Plan will focus on the quantity of water passing through the County and its associated watersheds by inventorying, assessing and evaluating the drainage infrastructure.

**Goal:** Manage waters in Polk County in a manner that reduces flood damages within the County as well as the Red River Basin. Goals that have been established and will be recognized by Polk County are:

1) The Red River Basin Commission 20% Flow Reduction Strategy which indicate a 35% peak flow reduction on the Sand Hill River at Climax and a 35% peak flow reduction on the Red Lake River at Crookston. To meet these goals Polk County will need to coordinate its efforts with other counties and watershed districts to attain these peak flow reduction in the watersheds shared with Polk County. (May want to include the document as an appendix)

2) The Flood Damage Reduction Work Group Mediation Agreement which include but not limited to:

Prevent damage to farm structures, homes, and communities.

a. Promote the construction of farmstead ring dikes built to a minimum of 2 feet of freeboard over the flood of record, or 1 foot above the administrative 100-year flood, whichever is greater.

b. Promote the construction of community setback levees and floodwalls built to the flood of record plus uncertainty (3 feet) or the 100-year flood plus uncertainty, whichever is greater.

c. Promote the acquisition and permanent removal of flood-prone structures and establishment of greenways within the 100-year flood plain.

d. Accelerate flood insurance studies, flood plain remapping and hydraulic/hydrologic studies in poorly defined or unmapped areas.

e. Accelerate comprehensive watershed and systems approaches to basin management.

f. Discourage the development of structures within the 100-year flood plain, with the exception of those approved in a community's flood plain ordinances.

3. Reduce damage to farmland by:

a. Providing protection against a ten-year summer storm event for intensively farmed agricultural land;

b. Maintaining existing levels of flood protection when consistent with a comprehensive watershed management plan; and

c. Providing a higher level of protection, e.g., 25-year event, when feasible at a minimal incremental cost.

Until additional targeting efforts are applied the following have been identified as the county's priority project areas based on a collaborative approach to water quality issues, readiness of projects, and willingness of project stakeholders. These and other future projects will be further defined and identified in the Annual Planning process.

Priority Areas: validate that all ditch systems are functioning properly with the right culvert size, and proper BMP's associated with that ditch system, be it a private, county or watershed ditch. Making sure that absentee landowners are maintaining the natural water courses so water movement isn't impeded. Address water impoundments or any wetland improvements or dikes



that hold water back so it does not alter the drainage system or change the water table so it will have an adverse affect on neighboring property, multi-purpose drainage Assessments, and wetland restoration through the state banking program to hold back water.

**1) Objective:** Ensure that county, township, watershed and private ditch systems adequately address the drainage needed to support agriculture without negatively impacting water quality and other natural resources, as well as economic impacts to the infrastructure of Polk County.

- Action: Establish design standards for the repair, maintenance, improvement, and establishment of agricultural drainage systems.
- Action: Determine if ditch systems are of adequate size.
- Action: Identify needed BMP's such as buffer strips and side inlet pipes.
- Action: Assess and modify, if needed, Polk County ditch rules and ordinances.
- Action: Assess and modify, if needed Polk County ditch and culvert permitting.
- Action: Assess adequacy of the drainage infrastructure.
- Action: Conduct a culvert inventory.
- Action: Identify and map private ditch systems to better understand water movement within the ditch system and county.
- Action: Assess need to record tiling activity that is presently unregulated.
- Action: Work with Watershed Districts on proper permitting for tiling on private land.
- Action: Address the need for beaver control in public and private ditch systems.

**2) Objective:** Identify key areas within the County that are prone to flooding and implement proper actions to address flood prevention.

- Action: Use targeting tools to prioritize.
- Action: Establishment of BMP's that will reduce and/or slow down water movement through the County.
- Action: Identify site for water retention through land retirement programs such as the RIM/WRP or Agricultural Wetland Banking programs.
- Action: Carry out goals and objectives in Watershed District 10 year plans.
- Action: Seek funding to assist landowners in flooded areas of the County; this could include MN Recover funds, emergency funding and FEMA funding.

### Priority Concern #3

Polk County is concerned with the preservation and enhancement of its natural resources. The geology of Polk County is divided into 3 distinct areas; the glacial-lake plain, glacial lake washed till plain and glacial moraine region. These major areas, because of their size, unique geographical features, and wide diversity of natural resources are of significant benefit to the area and citizens.

- Polk County in cooperation with other local, state, and federal agencies will work to restore, enhance and protect these areas through programs and projects that accomplish this; cautious it is not done at the expense of the local economy.

Goal: Participate in the restoration, conservation, and protection of key areas providing unique ecological values and recreational opportunities.

Until additional targeting efforts are applied the following have been identified as the county's priority project areas based on a collaborative approach to water quality issues, readiness of projects, and willingness of project stakeholders. These and other future projects will be further defined and identified in the Annual Planning process.

Priority Areas: Conservation Reserve Program (CRP) acres that will be expiring in upcoming years which are located in the "high conservation potential" areas identified on the EBI map. Areas that protect or restore rare natural features as identified in the Minnesota County Biological Survey (MCBS). Priority will also be given to those areas or which a land management plan has been developed to ensure proper conservation and habitat goals are met.

**1) Objective:** Identify, restore, and protect grassland, wetland, and woodland habitats and key natural areas with multiple benefits to Polk County and its Citizens.

- Action: Seek funding opportunities with existing or future land retirement or easement programs, with cooperating partners.
- Action: Minimize land use impacts of potential land use changes by the installation of BMP's.

**2) Objective:** Recognize terrestrial areas that are unique to the County such as native prairie sites in the glacial beach ridge areas, and wetland areas of the lake region.

- Action: Seek funding opportunities with existing or future land retirement or easement programs, with cooperating partners.
- Action: Minimize land use impacts of potential land use changes by the installation of BMP's.

**3) Objective:** Protect and identify areas of threatened or endangered species

- Action: Promote education of species are threatened or endangered.
- Action: Minimize land use impacts of potential land use changes by the installation of BMP's.

**4) Objective:** Preserve high quality wetlands within Polk County for their best functional values.

- Action: Identify wetlands that are of high value for banking credits, easements, flood storage, and wildlife.
- Action: Offer cost share and other incentives to landowners to participate in restoration of wetlands.
- Action: Assist with development of Agricultural Wetland Banking program.

**Priority Concern #4**

Polk County Local Water Management Plan will identify any new or yet to date undiscovered exotic and invasive plant and invasive species for prevention and management practices.

**Goal:** Reduce invasive species impacts within Polk County.

Until additional targeting efforts are applied the following have been identified as the county's priority project areas based on a collaborative approach to water quality issues, readiness of projects, and willingness of project stakeholders. These and other future projects will be further defined and identified in the Annual Planning process.

Priority Areas: Address invasive species along road right-of-ways, absentee landowner's property, and local state and federal lands, aiming to prevent the spread of aquatic invasive species.

**1) Objective:** Control invasive species by prevention, reduction and elimination.

- Action: Map know sites and species occurrence.
- Action: Conduct public education on the invasive species by public meeting, mailings, news releases and newsletters
- Action: Seek funding though cooperating partners and grants.

**2) Objective:** Continue support of the Polk County Cooperative Weed Management Area

- Action: Have a central clearinghouse to compile all data collected.
- Action: Continue to have meetings to keep the PCCWM group active.
- Action: Keep the public informed of the PCCWM group activities.

## District Annual Plan Action Items

Goal #1: Improve the water quality of rivers and streams from the point they enter Polk County. Our goal is to attain/maintain a fishable/swimmable status of all lakes in the county, with the overall goal for all waters in Polk County to meet or exceed state water quality standards.

A: Objective: Continue to be the designated county feedlot officer in charge of the Polk County Feedlot Program as required by state rule requirements 7020. The SWCD has been delegated this program by the Polk County Commissioners.

Action: Carry out the 2014-2015 County feedlot Program Delegation Agreement and Work Plan. This work plan is available in the SWCD office or can be viewed on the District WEB page.

Lead/Role: EPSWCD – coordinate work plan activities  
Partners/roles: MPCA – guidance, funding  
Polk County – financial

Priority: High

B: Objective: Be partners within the Joint Power Boar to offer AgBMP's to assist landowners to obtain low interest loans from local lending institutes. These loans are for conservation practices that improve water quality.

Action: Contact local lending institutions on program categories/requirements.

Action: Assist with landowner sign-up and program guidance.

Lead/Role: EPSWCD – technical  
JPB - technical/Administrative  
Dept. of Ag – funding

Priority: Medium

C: Objective: Coordinate activities to make sure the County meets the requirements of the Wetland Conservation Act.

Action: Act as the LGU for Polk County

Action: Work with local, state, and federal agencies to identify wetland jurisdiction on proposed projects.

Action: Assist with replacement plans, band deposits/withdrawals, and related paper work.

Action: Provide timely technical assistance to landowners.  
Action: Be the official repository of the National Wetland Inventory Maps.

Action: Administer all program activities.  
Action: Work with producers on Ag Banking/wetland restoration sites.  
Action: Assist landowners for potential enrollment into the Ag banking Program.

Lead/Role: EPSWCD – administration/technical  
Partners/Role: BWSR – technical/financial  
Polk County – financial  
MNDNR – technical  
Army Corp Engineers – technical  
FSA/NRCS – technical

Priority: High

D: Objective: Enroll marginal lands into retirement programs. This includes RIM, CRP, WRP, Walk in Lands, Wetland Banking, Impoundments and buffers.

Action: Conduct surveys/meetings to gather landowner interest of programs.  
Action: Contact landowners for enrollment into retirement programs.

Lead/Role: EPSWCD – technical/financial  
FSA/NRCS – technical/financial  
BWSR – technical/financial  
Watershed Districts – technical/financial

Priority: High

E. Objective: Education activities to inform the public on District activities, programs and events.

Action: Host invasive species talks to area students and lake groups.  
Action: Put out newspaper articles, newsletters, have tours, demonstrations and fair booth.  
Action: Participate in conservation days, Envirothon, water festival and arbor day activities.

Lead/Role: EPSWCD – technical/financial  
Area SWCD's – technical/financial  
UMN Extension – technical  
Polk County Envir. Service – technical  
NRCS – technical  
MNDND/USFWS – technical  
Watershed districts – technical/financial  
Dept. of Ag – technical/financial

Priority: High

F. Objective: Administer the Priority Concerns and action items as identified in the Polk County Water Plan. Plan period is from 2012 thru 2022.

Action: Implement the action items identified to address the objectives to reach the Polk County Water Plan goals. (complete plan can be reviewed on the District WEB page eastpolkswcd.org)

Lead/Role: EPSWCD – technical/financial  
WPSWCD – technical/financial  
Polk County – technical/financial  
Polk County Water Plan Task Force – technical

Priority: High

## Goal #2: Manage waters in Polk County in a manner that reduces flood damages within the County as well as the Red River Basin.

A. Objective: Ensure that county, township, watershed, and private ditch systems adequately address the drainage needs to support agriculture without negatively impacting water quality and other natural resources, as well as economic impacts to the infrastructure of Polk County.

- Action: Determine if ditch systems are of adequate design.
- Action: Identify needed BMP's and buffers.
- Action: Assess the need to record tiling activities.
- Action: Promote to landowners better drainage management.
- Action: Promote correct drainage by utilizing drainage grade breaks.
- Action: Address the need for beaver control in all drainage systems.

Lead/Role: EPSWCD – technical  
Watershed Districts – technical  
Ag consultants – technical  
FSA/NRCS – technical

Priority: High

**Goal #3: Participate in the restoration, conservation, and protection of key areas providing unique ecological values and recreational opportunities.**

A: Objective: The EPSWCD will continue to provide services to BWSR and the landowners in working on the Vesedahl Mitigation Banking site.

Action: Assist BWSR with their goals and objectives of the site.

Action: Assist landowners with their concerns of the management of the site.

Lead/Role:                               BWSR/MNDOT/MNDNR – technical/financial  
  EPSWCD – technical  
  Sand Hill Watershed – technical/financial

Priority: High

**Goal #4: Identify any new or yet to date undiscovered exotic and invasive species for prevention and management practices.**

A: Objective: Curb the spread and minimize harmful effects on no-native species and their impacts within the District.

Action: Coordinate efforts with local, county, and state authorities to establish prevention and Management activities.

Action: Continue to seek funding sources to assist townships with noxious weed control.

Action: Participate in Polk Counties Cooperative Weed Management Task Force.

Action: give presentations to groups, schools, and lake associations as requested.

Lead/Role”                               EPSWCD – technical  
  BWSR – technical/financial  
  Watershed Districts – technical/financial  
  Polk County Cooperative Weed MGMTA Work Group – technical  
  FSA/NRCS – technical/financial  
  Townships – technical/financial  
  MNDNR/USFWS/Dept Ag – technical/financial

Priority: High

## Conservation Service Delivery

A. Tax Forfeit Lands: Parcel coming up for sale from the county are reviewed by the District to determine if there are any wetlands, unused wells or is considered highly erodible.

Priority: High

B. Tree Program: The District has trees available for planting field windbreaks, shelterbelts, reforestation and wildlife. Assistance is available for species selection, planning, planting, and maintenance.

Priority: Low

C. ReInvest In Minnesota: The SWCD works with potential landowners to enroll into this easement program. Site inspections on enrolled easements are completed by BWSR schedule.

D. Data Collection and Monitoring: The SWCD has 11 volunteer rainfall monitors that send in monthly reports (April – November). These reports are then sent to the State Climatologist to be included into the state wide rainfall collection. The District monitors monthly 1 MNDNR observation well in Hill River Township. The District reads the lake levels on 10 lakes for the MNDNR during the open water season. The district also partakes in the MPCA Citizens Stream Monitoring program on the Lost River, Clearwater River, Sand Hill River, Hill River and Poplar River. The rivers are monitored for appearance, recreational suitability, rainfall events and water temperature. Monitoring is done April thru November.

## Partnership Planning

The following projects are in various stages of development.

A. Red Lake Watershed District has identified potential sites within their legal ditch systems that need either side inlet pipes, erosion control structures and/or buffer strips. The Red Lake Watershed district has available yearly to the SWCD \$12,500 to install conservation practices within the Red Lake Watershed.

B. The Sand Hill River Watershed District has partner with the SWCD to supply \$50,000 for conservation practices within the watershed. This money has been instrumental in receiving Clean Water Assistance Grants.

C. Contribution Agreements with NRCS. If applicable the SWCD will assist with contribution agreements if they become available.

D. Co-Host Red River Valley Conservation Service Area 1. The East Polk SWCD is co-host with Becker SWCD that is the host district to administer the technical service provider for Area 1.



## Grants

In 2008 Minnesota voters approved the Clean Water, Land & Legacy Amendment to the constitution to:

- protect drinking water sources
- protect, enhance, and restore wetlands, prairie, forests, and fish, game and wildlife habitat
- preserve arts and cultural heritage
- protect, enhance, and restore lakes, rivers, streams, and groundwater

The Amendment increases the sales and tax by three-eighths of one percent on taxable sales starting July 1, 2009 continuing through 2034. Those dollars are dedicated to four funds: Outdoor Heritage Fund, Clean Water Fund, Parks and Trails Fund, and Arts and Cultural Heritage Funds.

In 2011 the District receive from the Clean Water Funds \$281,083 with an inkind contribution of \$137,380.89 for a total of \$418,463.89 to install 68 water and sediment basins within the Sand Hill Watershed.

In 2012 the District receive from the Clean Water Funds \$251,680 with inkind contributions of \$131,414.20 for a total of \$347,094.20 to install 76 water and sediment basins within the Sand Hill Watershed.

In 2014 the District receive from the Clean Water Funds \$364,880 with a proposed match of \$175,000 for a total of \$539,880. Presently there 3 completed project, 6 projects waiting Board approval and 10 sites waiting for engineering plans.

In 2015 the District receive from the Clean Water Funds \$253,800 with a proposed match of \$150,000 for a total of \$403,800. The SWCD has 9 landowners waiting for engineering service in the spring 2015 with plan designs to be ready in the fall 2015.

The District is cooperating with the Red Lake Watershed doing water testing on 3 sites for their Surface Water Assessment Grant (SWAG). Water samples will be taken on set dates throughout the monitoring season and sent to a certified lab for analysis.

## Potential Grants

- 1) Buffers – this could be broken down into (a) buffers around natural environmental lakes, (b) along the Sand Hill River, Poplar River and Hill River, and (c) along county ditch systems. This could either be a Clean Water Project or Accelerated Implementation Grant
- 2) Sediment basins along the Hill River and the Poplar River in the Red Lake Watershed.
- 3) Accelerated Implementation Grant for working with landowner's farm planning on expiring CRP contracts.
- 3) Cooperative Weed Management Grant to work with township official on weed issues. This was received in the past.
- 4) Carlson Coulee Clean Water Assistance Practice Grant to control erosion in the Carlson Coulee. Working with the Sand Hill River Watershed District.
- 5) Fertile Learning Center Erosion would be a Clean Water Assistance Practice Grant to help control erosion within the Sand Hill River. Also working with the Sand Hill Watershed District and the Fertile Learning Center.
- 5) One Watershed One Plan – Work in conjunction with the Sand Hill River Watershed District and Polk County to apply for the plan.
- 6) Work with the Lake Associations to apply for a Community Partners Grant to assist the Lake Associations with outreach educational activities. This could also be associated with Polk County's invasive species project.
- 7) Work with Apiaries to identify areas where there are bee hive colonies placed. Identify areas where more are needed for pollination. Identify if there is adequate grass/legumes in the area and how to improve. More of an educational activity applying for an Accelerated Implementation Grant

## State Cost – Share Program

In East Polk County there is approximately 293,000 acres of cropland. 97% has the potential to erode at a rate greater than "T", the allowable rate.

Priority Area 1: A high percent of the land in Critical Area 1 is susceptible to water erosion due to steep slopes or severe wind erosion caused by open, unprotected sandy soils. Soil loss is estimated to be anywhere from 7-18 tons per acre per year. Erosion is a serious problem in areas along the Clearwater River, Lost River, and the Sand Hill River where private and county ditches and tile enter.

Priority Area 2: Wind and water erosion is not as critical due to moderate slopes and sandy soils protected to some degree by wooded areas. Soil loss will range from 6-12 tons per acre per year.

Priority Area 3: Soils composed of peat or till. The soil topography is on nearly level ground. Scattered areas have critical soil loss. Soil loss will usually be less than 5 ton per acre per year.

### FY 14 Cost-share

This money has been encumber for water and sediment basin installation in Hill River Township. Survey and design completed and project is ready to be constructed. The Red Lake Watershed district has committed \$12,500 towards the cost of this project.

### FY15 Cost-share

A site has been identified in Hill River Township. The site has been surveyed waiting for engineer design. Once cost estimates are final the district will present to the Red lake Watershed District to receive additional funds.

## District FY 2016-17 BBR

In 2012, BWSR implemented the initial Biennial Budget Request to collect information on local government conservation and water management resource needs for FY 2016-17.

- a) Conservation Delivery - \$37,656 to administer SWCD programs
- b) State Cost- Share - \$50,732 to apply more conservation on the land
- c) Conservation Easements - \$316 for RIM inspections
- e) Shoreland Restoration - \$113,675 cost share for restoration projects along lakeshore
- f) Sand Hill River Carlson Project - \$500,000 channel stabilization of 4,300’
- g) Sand Hill River Learning Center - \$200,391 stabilize 1,200’ of shoreline
- h) MN Prairie Conservation Plan - \$120,000 for planning and assessment
- i) Red Lake Watershed - \$314,000 to install side water inlet pipes into rivers and county ditches
- j) Sand Hill River \$533,280 to install water and sediment basins
- k) Red Lake Watershed - \$246,480 to install water and sediment basins
- l) County/Townships - \$37,500 to work with invasive species control
- m) Sand Hill River Monitoring - \$22,226 to monitor water quality out of sediment basins
- n) Polk County - \$26,500 to track and educate on Natural Development lakes
- o) Polk County ditch systems - \$26,500 to identify conservation needs on County ditches
- p) Polk County – to inventory bee yard locations, identify where there is shortage

## East Polk SWCD Staff analyst for 2015

Staff: Full time district Manager  
Full time district technician  
Part time district bookkeeper  
RRVCSA 1 Engineer – as requested  
5 district supervisors

To assist the SWCD in carrying out the Districts work plan, assistance is received from supporting staff/agencies:

Sand Hill River Watershed District	Neighboring SWCD’s
Red Lake Watershed District	BWSR
Polk County	MN Dept of Natural Resources
FSA/NRCS	MN Pollution Control Agency
Univ. of MN Extension	US Army Corp of Engineers
Lake improvement Districts	US fish wildlife Service
Townships	Dept of Ag
MASWCD	

## 2015 EAST POLK SWCD BUDGET

### REVENUES




State Grant	\$18,828.00
RIM	149.00
County Appropriation	41,160.00
NRB Grant	
CLWP	11,958.00
WCA	21,641.00
Feedlot	3,750.00
Tree Program	6,000.00
Interest	700.00
RL WTSH- SWAG	3,442.00
State Cost-share	10,293.00
CWA FY 12 Final Payment	25,168.00
Reserve Funds	70,674.00
Total Revenue	\$213,763.00

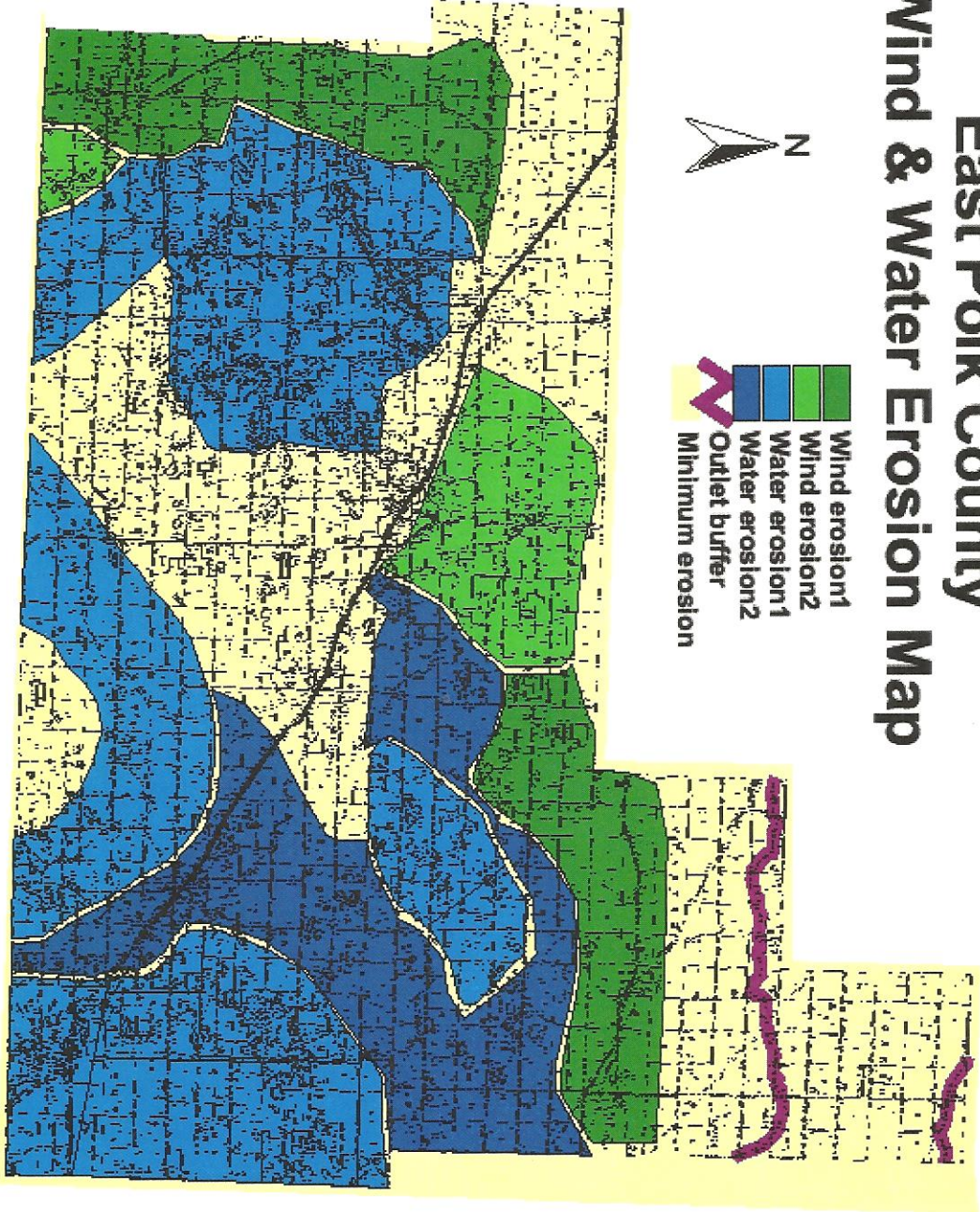
### EXPENDITURES

Employee Salary	\$129,905.00
Fica & Medicare	9,418.00
Pera	9,937.00
Supervisor Compensation	5,000.00
Supervisor Expense	3,000.00
Employee Expense	4,000.00
Office Maintenance	5,000.00
Supplies/Copy Machine	3,000.00
Office Rent	1,710.00
Pick-up Maintenance	4,000.00
Fees/Dues	6,000.00
Information & Education	3,000.00
Capital Outlay	15,000.00
Trees	4,500.00
State Cost share	10,293.00
Total Expenditures	\$213,763.00

# East Polk County Wind & Water Erosion Map

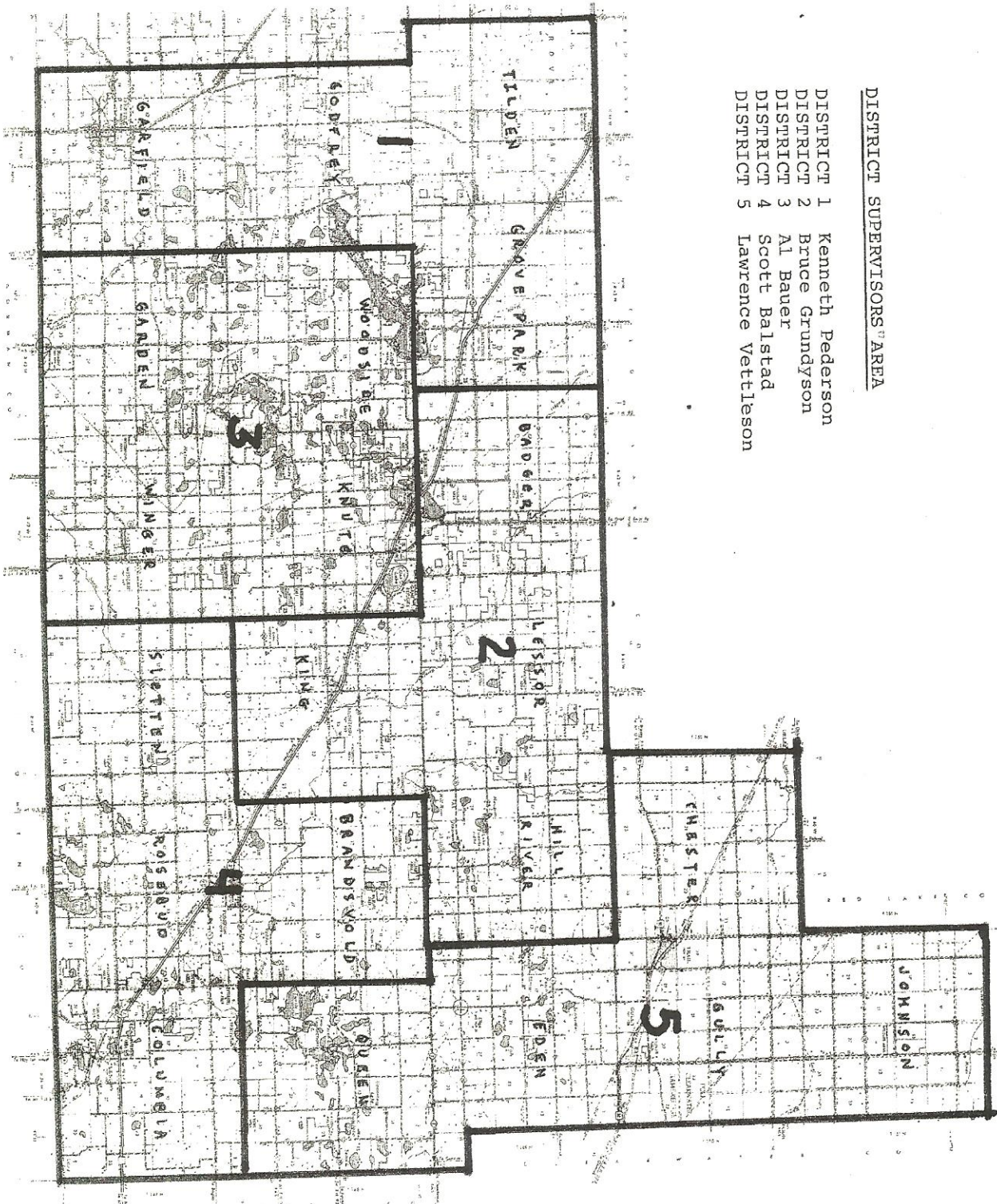


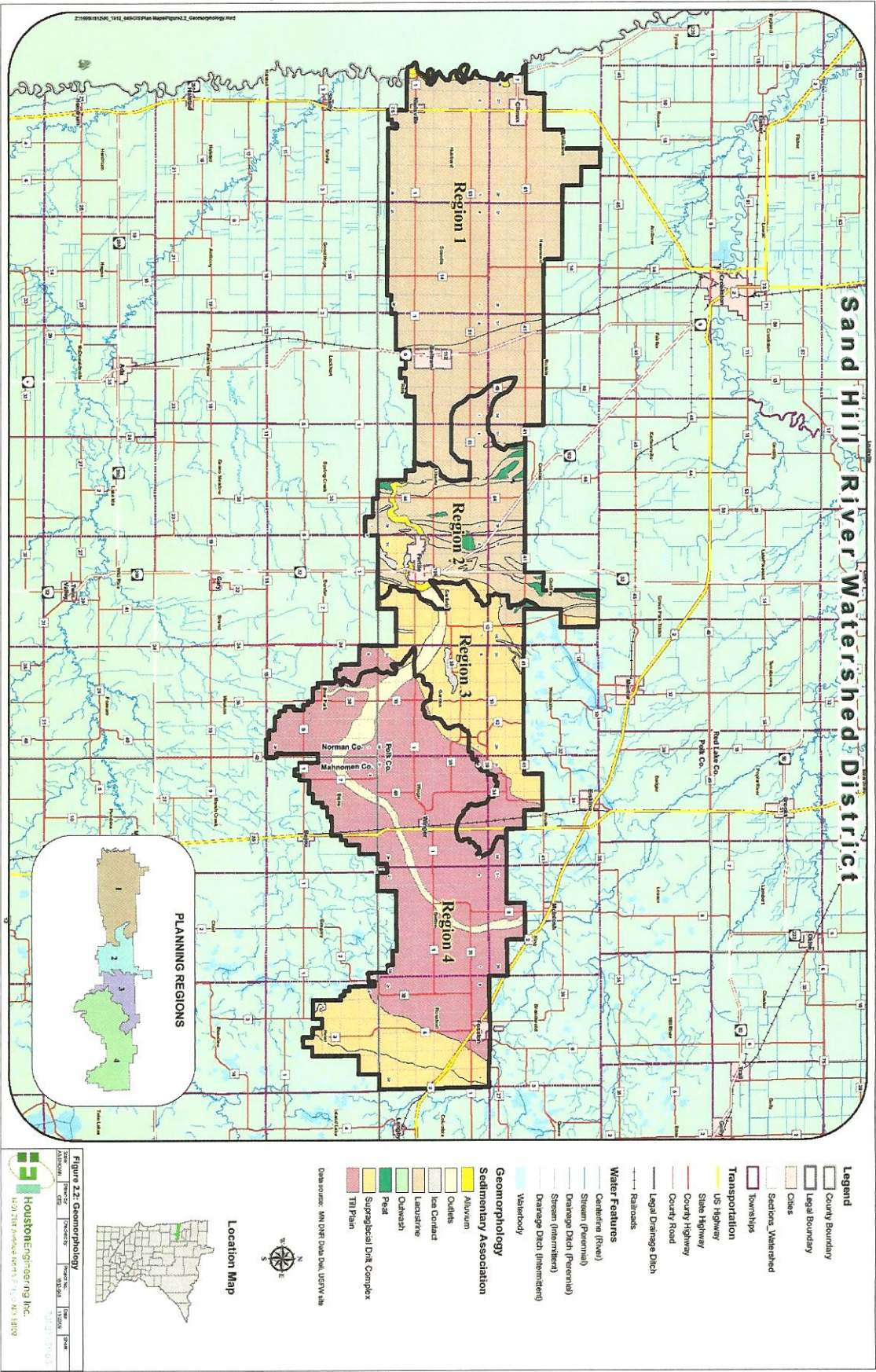
-  Wind erosion1
-  Wind erosion2
-  Water erosion1
-  Water erosion2
-  Outlet buffer
-  Minimum erosion



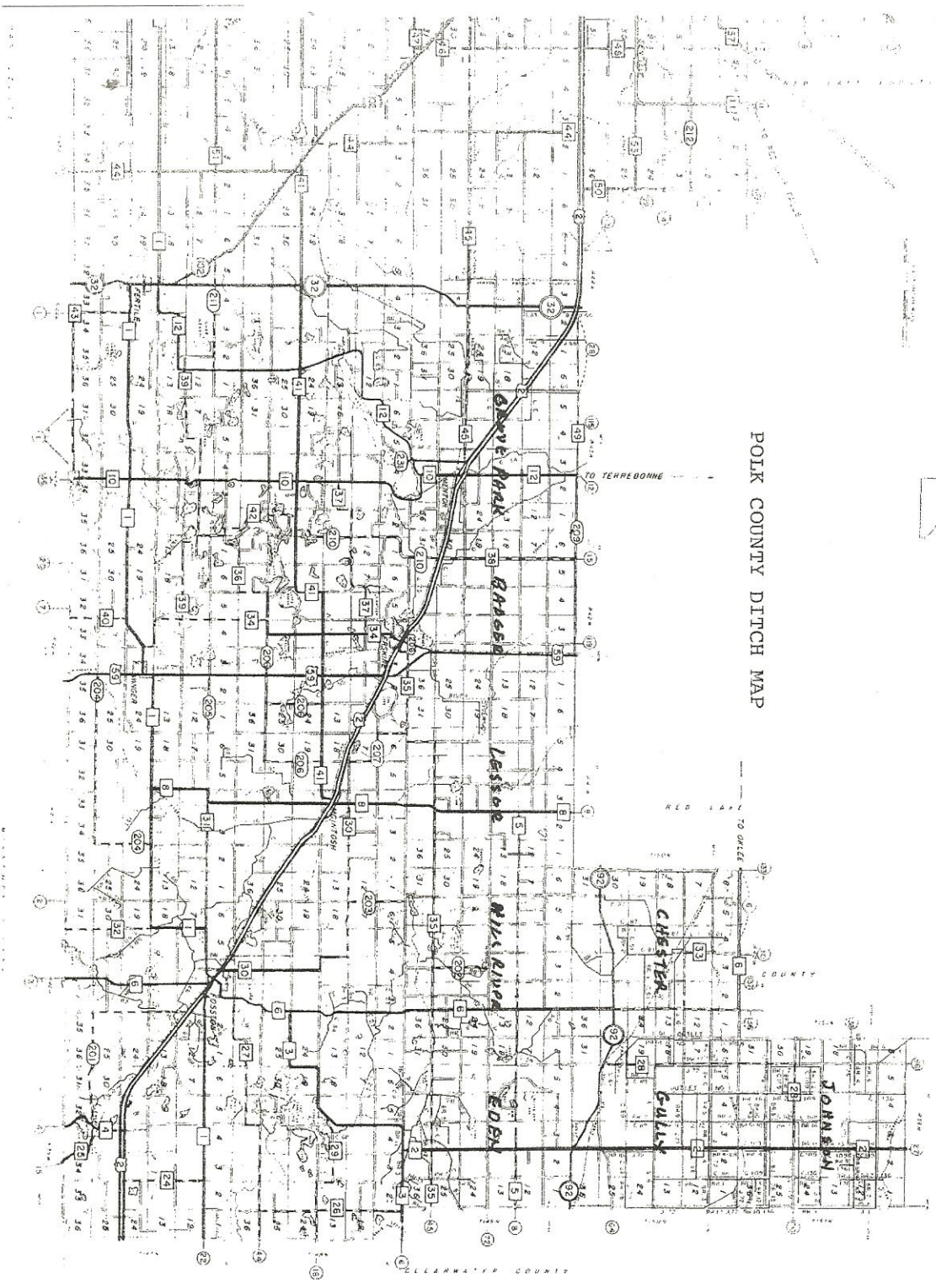
DISTRICT SUPERVISORS' AREA

- DISTRICT 1 Kenneth Pederson
- DISTRICT 2 Bruce Grundyson
- DISTRICT 3 Al Bauer
- DISTRICT 4 Scott Balstad
- DISTRICT 5 Lawrence Vettleson









POLK COUNTY DITCH MAP