

Quality ID #430: Prevention of Post-Operative Nausea and Vomiting (PONV) – Combination Therapy
– National Quality Strategy Domain: Patient Safety
– Meaningful Measure Area: Preventive Care

2022 COLLECTION TYPE:

MIPS CLINICAL QUALITY MEASURES (CQMS)

MEASURE TYPE:

Process – High Priority

DESCRIPTION:

Percentage of patients, aged 18 years and older, who undergo a procedure under an inhalational general anesthetic, AND who have three or more risk factors for post-operative nausea and vomiting (PONV), who receive combination therapy consisting of at least two prophylactic pharmacologic anti-emetic agents of different classes preoperatively and/or intraoperatively.

INSTRUCTIONS:

This measure is to be submitted **each time** any procedure including surgical, therapeutic or diagnostic under an inhalational general anesthetic is performed during the performance period. There is no diagnosis associated with this measure. It is anticipated that Merit-based Incentive Payment System (MIPS) eligible clinicians who provide the listed anesthesia services as specified in the denominator coding will submit this measure.

Measure Submission Type:

Measure data may be submitted by individual MIPS eligible clinicians, groups, or third party intermediaries. The listed denominator criteria are used to identify the intended patient population. The numerator options included in this specification are used to submit the quality actions as allowed by the measure. The quality data codes listed do not need to be submitted by MIPS eligible clinicians, groups, or third party intermediaries that utilize this modality for submissions; however, these codes may be submitted for those third party intermediaries that utilize Medicare Part B claims data. For more information regarding Application Programming Interface (API), please refer to the Quality Payment Program (QPP) website.

DENOMINATOR:

All patients, aged 18 years and older, who undergo any procedure including surgical, therapeutic or diagnostic under an inhalational general anesthetic, AND who have three or more risk factors for PONV

Definition:

PONV Risk Factors – The following are risk factors for PONV:

- Female gender
- History of PONV
- History of motion sickness
- Non-smoker
- Intended administration of opioids for post-operative analgesia. This includes use of opioids given intraoperatively and whose effects extend into the post anesthesia care unit (PACU) or post-operative period, or opioids given in the PACU, or opioids given after discharge from the PACU.

Denominator Criteria (Eligible Cases):

Patients aged ≥ 18 years on date of service

AND

Patient procedure during the performance period (CPT): 00100, 00102, 00103, 00104, 00120, 00124, 00126, 00140, 00142, 00144, 00145, 00147, 00148, 00160, 00162, 00164, 00170, 00172, 00174, 00176, 00190, 00192, 00210, 00211, 00212, 00214, 00215, 00216, 00218, 00220, 00222, 00300, 00320, 00322, 00350, 00352, 00400, 00402, 00404, 00406, 00410, 00450, 00454, 00470, 00472, 00474, 00500, 00520,

00522, 00524, 00528, 00529, 00530, 00532, 00534, 00537, 00539, 00540, 00541, 00542, 00546, 00548, 00550, 00560, 00566, 00580, 00600, 00604, 00620, 00625, 00626, 00630, 00632, 00635, 00640, 00670, 00700, 00702, 00730, 00731, 00732, 00750, 00752, 00754, 00756, 00770, 00790, 00792, 00794, 00796, 00797, 00800, 00802, 00811, 00812, 00813, 00820, 00830, 00832, 00840, 00842, 00844, 00846, 00848, 00851, 00860, 00862, 00864, 00865, 00866, 00868, 00870, 00872, 00873, 00880, 00882, 00902, 00904, 00906, 00908, 00910, 00912, 00914, 00916, 00918, 00920, 00921, 00922, 00924, 00926, 00928, 00930, 00932, 00934, 00936, 00938, 00940, 00942, 00944, 00948, 00950, 00952, 01112, 01120, 01130, 01140, 01150, 01160, 01170, 01173, 01200, 01202, 01210, 01212, 01214, 01215, 01220, 01230, 01232, 01234, 01250, 01260, 01270, 01272, 01274, 01320, 01340, 01360, 01380, 01382, 01390, 01392, 01400, 01402, 01404, 01420, 01430, 01432, 01440, 01442, 01444, 01462, 01464, 01470, 01472, 01474, 01480, 01482, 01484, 01486, 01490, 01500, 01502, 01520, 01522, 01610, 01620, 01622, 01630, 01634, 01636, 01638, 01650, 01652, 01654, 01656, 01670, 01680, 01710, 01712, 01714, 01716, 01730, 01732, 01740, 01742, 01744, 01756, 01758, 01760, 01770, 01772, 01780, 01782, 01810, 01820, 01829, 01830, 01832, 01840, 01842, 01844, 01850, 01852, 01860, 01924, 01925, 01926, 01930, 01931, 01932, 01933, 01937, 01938, 01939, 01940, 01941, 01942, 01951, 01952, 01961, 01962, 01963, 01965, 01966

WITHOUT

Telehealth Modifier: GQ, GT, 95, POS 02

AND

Patient received inhalational anesthetic agent: 4554F

AND

Patient exhibits 3 or more risk factors for post-operative nausea and vomiting: 4556F

NUMERATOR:

Patients who receive combination therapy consisting of at least two prophylactic pharmacologic anti-emetic agents of different classes preoperatively and/or intraoperatively

Definition:

Anti-emetics Therapy – The recommended first- and second-line classes of pharmacologic anti-emetics for PONV prophylaxis in patients at moderate to severe risk of PONV include (but are not limited to):

- NK-1 Receptor Antagonists
- 5-Hydroxytryptamine (5-HT₃) Receptor Antagonists
- Glucocorticoids
- Propofol for induction and maintenance of anesthesia
- Phenothiazines
- Phenylethylamines
- Butyrophenones
- Antihistamines
- Anticholinergics

NUMERATOR NOTE: *The foregoing list of medications/drug names is based on clinical guidelines and other evidence. The specified drugs were selected based on the strength of evidence for their clinical effectiveness. This list of selected drugs may not be current. Physicians and other health care professionals should refer to the FDA's web site page entitled "Drug Safety Communications" for up-to-date drug recall and alert information when prescribing medications.*

Numerator Options:

Performance Met:

Patient received at least 2 prophylactic pharmacologic anti-emetic agents of different classes preoperatively and/or intraoperatively (**G9775**)

OR

Denominator Exception:

Documentation of medical reason for not receiving at least 2 prophylactic pharmacologic anti-emetic agents of

different classes preoperatively and/or intraoperatively (e.g., intolerance or other medical reason) (G9776)

OR

Performance Not Met:

Patient did not receive at least 2 prophylactic pharmacologic anti-emetic agents of different classes preoperatively and/or intraoperatively (G9777)

RATIONALE:

Postoperative nausea and vomiting (PONV) is an important patient-centered outcome of anesthesia care. PONV is highly dis-satisfying to patients, although rarely life-threatening. A large body of scientific literature has defined risk factors for PONV; demonstrated effective prophylactic regimes based on these risk factors, and demonstrated high variability in this outcome across individual centers and providers. Further, a number of papers have shown that performance can be assessed at the level of individual providers -- the outcome is common enough that sufficient power exists to assess variability and improvement at this level.

CLINICAL RECOMMENDATION STATEMENTS:

Practice Guidelines for Postanesthetic Care; American Society of Anesthesiologists, 2013

Anti-emetic agents should be used for the prevention and treatment of nausea and vomiting when indicated.

Multiple anti-emetic agents may be used for the prevention and treatment of nausea and vomiting when indicated.

Fourth Consensus Guidelines for the Management of Postoperative Nausea and Vomiting; Society for Ambulatory Anesthesia (SAMBA), 2020

Administer prophylactic therapy with combination (≥ 2) interventions/multimodal therapy in patients at high risk for PONV.

COPYRIGHT:

The Measure is not a clinical guideline, does not establish a standard of medical care, and has not been tested for all potential applications.

The Measure, while copyrighted, can be reproduced and distributed, without modification, for noncommercial purposes, e.g., use by health care providers in connection with their practices. Commercial use is defined as the sale, license, or distribution of the Measure for commercial gain, or incorporation of the Measure into a product or service that is sold, licensed or distributed for commercial gain.

Commercial uses of the Measure require a license agreement between the user and ASA be responsible for any use of the Measure.

The PCPI's and AMA's significant past efforts and contributions to the development and updating of the Measures are acknowledged.

ASA is solely responsible for the review and enhancement ("Maintenance") of the Measure as of July 1, 2020.

ASA encourages use of the Measure by other health care professionals, where appropriate.

THE MEASURE AND SPECIFICATIONS ARE PROVIDED "AS IS" WITHOUT WARRANTY OF ANY KIND.

©2021 ASA. All Rights Reserved.

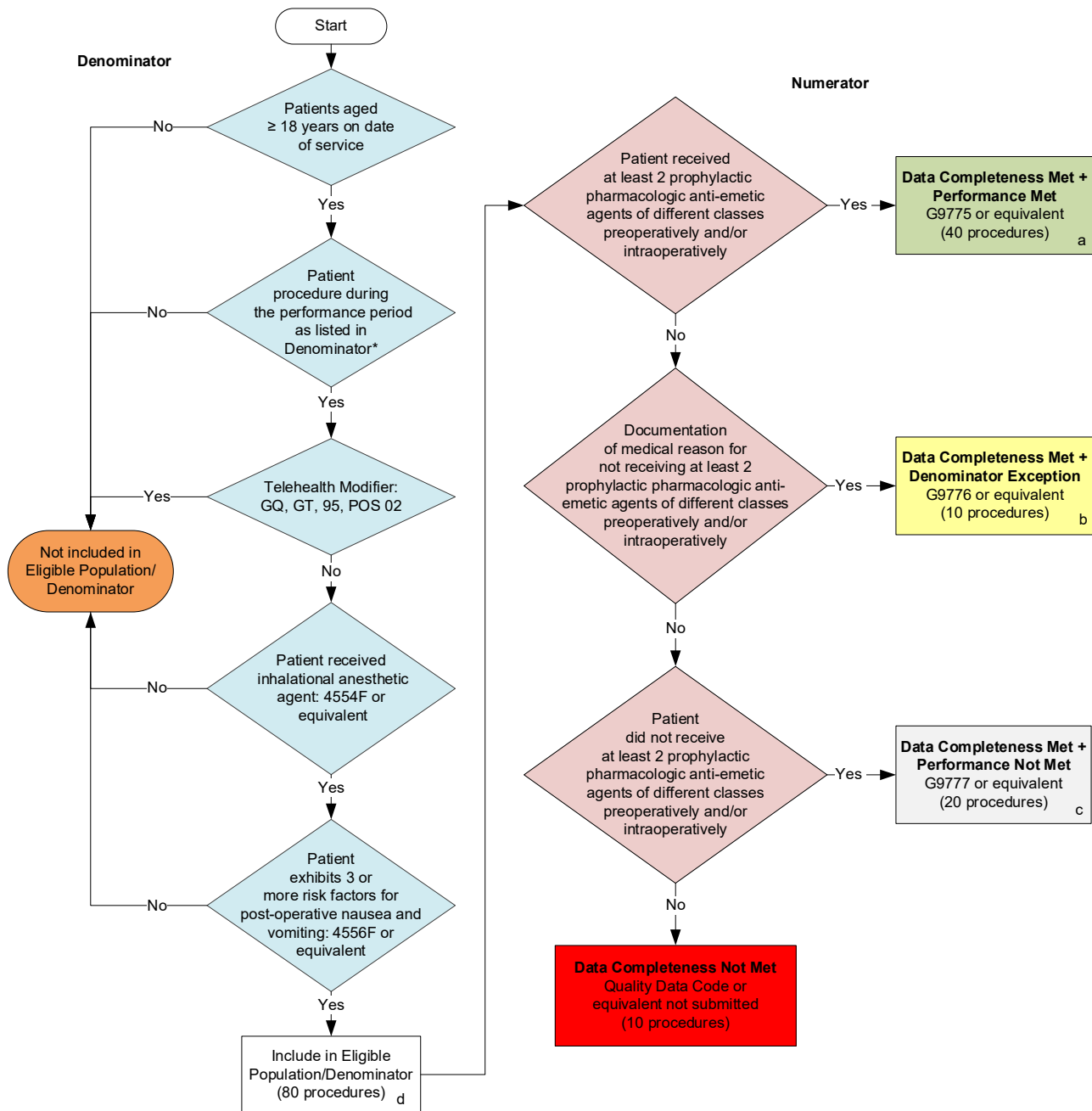
Limited proprietary coding may be contained in the Measure specifications for convenience. A license agreement must be

entered prior to a third party's use of Current Procedural Terminology (CPT®) or other proprietary code set contained in the Measures. Any other use of CPT or other coding by the third party is strictly prohibited. AQI, ASA and its members, the AMA, and former members of the PCPI disclaim all liability for use or accuracy of any CPT or other coding contained in the specifications.

CPT® contained in the Measures specifications is copyright 2004-2021 American Medical Association. LOINC® copyright 2004-2021 Regenstrief Institute, Inc. SNOMED CLINICAL TERMS (SNOMED CT®) copyright 2004-2021. The International Health Terminology Standards Development Organisation (IHTSDO). ICD-10 is copyright 2021 World Health Organization. All Rights Reserved.

2022 Clinical Quality Measure Flow for Quality ID #430: Prevention of Post-Operative Nausea and Vomiting (PONV) - Combination Therapy

Disclaimer: Refer to the measure specification for specific coding and instructions to submit this measure.



SAMPLE CALCULATIONS

Data Completeness=

$$\frac{\text{Performance Met (a=40 procedures)} + \text{Denominator Exception (b=10 procedures)} + \text{Performance Not Met (c=20 procedures)}}{\text{Eligible Population / Denominator (d=80 procedures)}} = \frac{70 \text{ procedures}}{80 \text{ procedures}} = 87.50\%$$

Performance Rate=

$$\frac{\text{Performance Met (a=40 procedures)}}{\text{Data Completeness Numerator (70 procedures) - Denominator Exception (b=10 procedures)}} = \frac{40 \text{ procedures}}{60 \text{ procedures}} = 66.66\%$$

*See the posted measure specification for specific coding and instructions to submit this measure.

NOTE: Submission Frequency: Procedure

CPT only copyright 2021 American Medical Association. All rights reserved.
The measure diagrams were developed by CMS as a supplemental resource to be used in conjunction with the measure specifications. They should not be used alone or as a substitution for the measure specification.

v6

**2022 Clinical Quality Measure Flow Narrative for Quality ID #430:
Prevention of Post-Operative Nausea and Vomiting (PONV) - Combination Therapy**

Disclaimer: Refer to the measure specification for specific coding and instructions to submit this measure.

1. Start with Denominator
2. Check *Patients aged greater than or equal to 18 years on date of service*:
 - a. If *Patients aged greater than or equal to 18 years on date of service* equals No, do not include in *Eligible Population/Denominator*. Stop processing.
 - b. If *Patients aged greater than or equal to 18 years on date of service* equals Yes, proceed to check *Patient procedure during the performance period as listed in Denominator**.
3. Check *Patient procedure during the performance period as listed in Denominator**:
 - a. If *Patient procedure during the performance period as listed in Denominator** equals No, do not include in *Eligible Population/Denominator*. Stop processing.
 - b. If *Patient procedure during the performance period as listed in Denominator** equals Yes, proceed to check *Telehealth Modifier*.
4. Check *Telehealth Modifier*:
 - a. If *Telehealth Modifier* equals Yes, do not include in *Eligible Population/Denominator*. Stop processing.
 - b. If *Telehealth Modifier* equals No, proceed to check *Patient received inhalational anesthetic agent*.
5. Check *Patient received inhalational anesthetic agent*:
 - a. If *Patient received inhalational anesthetic agent* equals No, do not include in *Eligible Population/Denominator*. Stop processing.
 - b. If *Patient received inhalational anesthetic agent* equals Yes, proceed to check *Patient exhibits 3 or more risk factors for post-operative nausea and vomiting*.
6. Check *Patient exhibits 3 or more risk factors for post-operative nausea and vomiting*:
 - a. If *Patient exhibits 3 or more risk factors for post-operative nausea and vomiting* equals No, do not include in *Eligible Population/Denominator*. Stop processing.
 - b. If *Patient exhibits 3 or more risk factors for post-operative nausea and vomiting* equals Yes, include in *Eligible Population/Denominator*.
7. Denominator Population:
 - a. Denominator Population is all Eligible Procedures in the Denominator. Denominator is represented as Denominator in the Sample Calculation listed at the end of this document. Letter d equals 80 procedures in the Sample Calculation.
8. Start Numerator
9. Check *Patient received at least 2 prophylactic pharmacologic anti-emetic agents of different classes preoperatively and/or intraoperatively*:

- a. If *Patient received at least 2 prophylactic pharmacologic anti-emetic agents of different classes preoperatively and/or intraoperatively* equals Yes, include in *Data Completeness Met and Performance Met*.
 - *Data Completeness Met and Performance Met* letter is represented in the Data Completeness and Performance Rate in the Sample Calculation listed at the end of this document. Letter a equals 40 procedures in the Sample Calculation.
 - b. If *Patient received at least 2 prophylactic pharmacologic anti-emetic agents of different classes preoperatively and/or intraoperatively* equals No, proceed to check *Documentation of medical reason(s) for not receiving at least 2 prophylactic pharmacologic anti-emetic agents of different classes preoperatively and intraoperatively*.
10. Check *Documentation of medical reason for not receiving at least 2 prophylactic pharmacologic anti-emetic agents of different classes preoperatively and intraoperatively*:
- a. If *Documentation of medical reason for not receiving at least 2 prophylactic pharmacologic anti-emetic agents of different classes preoperatively and intraoperatively* equals Yes, include in *Data Completeness Met and Denominator Exception*.
 - *Data Completeness Met and Denominator Exception* letter is represented in the Data Completeness and Performance Rate in the Sample Calculation listed at the end of this document. Letter b equals 10 procedures in the Sample Calculation.
 - b. If *Documentation of medical reason for not receiving at least 2 prophylactic pharmacologic anti-emetic agents of different classes preoperatively and intraoperatively* equals No, proceed check *Patient did not receive at least 2 prophylactic pharmacologic anti-emetic agents of different classes preoperatively and/or intraoperatively*.
11. Check *Patient did not receive at least 2 prophylactic pharmacologic anti-emetic agents of different classes preoperatively and/or intraoperatively*:
- a. If *Patient did not receive at least 2 prophylactic pharmacologic anti-emetic agents of different classes preoperatively and/or intraoperatively* equals Yes, include in *Data Completeness Met and Performance Not Met*.
 - *Data Completeness Met and Performance Not Met* letter is represented in the Data Completeness Rate in the Sample Calculation listed at the end of this document. Letter c equals 20 procedures in the Sample Calculation.
 - b. If *Patient did not receive at least 2 prophylactic pharmacologic anti-emetic agents of different classes preoperatively and/or intraoperatively* equals No, proceed to check *Data Completeness Not Met*.
12. Check *Data Completeness Not Met*:
- If *Data Completeness Not Met*, the Quality Data Code or equivalent was not submitted. 10 procedures have been subtracted from the Data Completeness Numerator in the Sample Calculation.

Sample Calculations

Data Completeness equals Performance Met (a equals 40 procedures) plus Denominator Exception (b equals 10 procedures) Plus Performance Not Met (c equals 20 procedures) divided by Eligible Population/Denominator (d equals 80 procedures). All equals 70 divided by 80 procedures. All equals 87.5 percent.

Performance Rate equals Performance Met (a equals 40 procedures) divided by Data Completeness Numerator (70 procedures) minus Denominator Exception (b equals 10 procedures). All equals 40 procedures divided by 60 procedures. All equals 66.66 percent.

*See the posted measure specification for specific coding and instructions to submit this measure.

NOTE: Submission Frequency: Procedure

The measure diagrams were developed by CMS as a supplemental resource to be used in conjunction with the measure specifications. They should not be used alone or as a substitution for the measure specification.