

## Routes to enjoy and areas to discover on route to the hostel

### O Corazón da Ribeira Sacra.

**[BY CLICKING ON THE BLUE LINKS, YOU HAVE ACCESS TO THE ROUTES IN GOOGLE MAPS](#)**

#### RUTA DE TURISMO PARTIENDO DESDE LUGO

**[Taking the exit 488 on the A6](#)**, you can go towards Lugo, taking the 1st exit of the roundabout, taking the LU - 11 road.

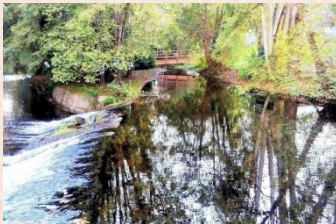
In Lugo we can enjoy the impressive city walls, or the cathedral, which is a mixture of several architectural eras, built in the center of the city and is a World Heritage Site

since 2015, the city also has multiple churches from the Roman period and the area of the old town, which is among the most outstanding in Galicia, we can also visit an ancient Roman complex in the House of Mosaics.



**[From the previous exit of the A6](#)**, at the same roundabout, taking the 4th exit, on the CG 2.2 northbound, following this road we will arrive in 20 minutes to Sarria.

This beautiful Jacobean village has been one of the starting points of the Camino de Santiago on its French side since the Middle Ages, in addition we can visit the Museo do Pan, where you can still taste the tradition, or enjoy the multiple green hiking routes through the Monte de Santa Cristina, or the Foz das Aceas route, which runs next to the Sarria River, and is dotted with historical monuments, from small churches of the fourteenth century to mills or bridges.



The next area to discover is Monforte de Lemos, the capital of the Riveira Sacra, to reach this beautiful natural place, **[we must join the CG 2.2 from Sarria](#)** heading north, without having to take any detour, or in case of going directly without passing through Sarria, we would only **[have to follow the CG 2.2 directly](#)**.



In Monforte we will find a wide variety of historical places among which to get lost during our stay, the Tower of Homage is perfectly visible from the entrance to the city, and its views of the valley are something spectacular, next to it



we can find both the Palacio Condal and the Benedictine Monastery of San Vicente del Pino, both show different architectural styles, given the different remodelling suffered over the centuries.

The city also has several museums and exhibitions, among which the Museum of Sacred Art of the Poor Clare Mothers,



which houses one of the most important collections of Italian art of the seventeenth century in Spain, then we have the Pinacoteca del Cardenal, which although it has a smaller space houses in its collection works by painters such as El Greco and Azzolino, Another of the great attractions of the area is the Ribeira Sacra Wine Center, which is located in a fourteenth-century building and has a magnificent exhibition where visitors delve into the secrets of the wine of the Ribeira Sacra, also having a tasting room, rations where you can taste products from the area and a large shop where you can find wines with the D.O of the area.



For those who like to enjoy nature and really special spaces, the area has tourist routes that border the canyons of the Rio Sil, which are dotted with viewpoints with unique views of the canyons and meanders, as well as the large vineyards.



Finally when leaving Monforte, we will go towards A Abeleda, taking [the regional road LU 903](#) that will take us to the destination without any detour.

A Abeleda is one of the places where you can take a tour of the Rio Sil by catamaran (Phone reservations 988 215 100), the views it offers of the vineyards in the area are really spectacular and contrast greatly with the views we can have from the elevated parts of the canyons of the river, in places like the Mirador das Penas de Matacans, or the Mirador de Castro Candela.



The other great feature of the area of A Abeleda is gastronomic, especially wine tourism, since here are wineries where you can taste D.O. Ribeira Sacra wines, try rations and dishes of local products, both for dinner and lunch, in addition they have inns and restaurants of high quality with homemade food thanks to the use of products of local origin.

Our route ends at the [Pension O Corazon da Ribeira Sacra](#), where you can rest quietly after spending a day of enjoyment on this beautiful route.

