



YOUR NEIGH-BORHOOD HULLABALOO

CREATED & EDITED BY HEATHER CARDER

12 Horse Zodiac signs –

Does your horse match their character? By Rachel Major

Is your horse a free-spirited jumper? An adventurous trail horse? A determined champion? Find out now with our short guide to the 12 horse zodiac signs!

You may be surprised at how many personality traits in our horses can be explained by their equine zodiac. A peek into the astrological realm can provide insights into your relationship with your horse that you may never have considered. All you need is the birth date of your horse to get started on a journey towards a better understanding. Whether you believe in zodiac signs or not, it will be fun to find out how accurate your horse's sign truly is.

Capricorn-The Dedicated Destrier December 22-January 19

Strengths: Ambitious, Realistic, Wise.

Weaknesses: Unforgiving, pessimistic, dissatisfied.

Around The Stable: Silly antics withing the herd don't impress this horse. As a battle-hardened war horse, the Capricorn is pragmatic and serious. They often come across as an old soul in a young body, and their wise nature has a palpable affect on any herd. With a

tendency to have low self confidence, the Capricorn horse wants to appear strong at all times. Their determined spirit will work for you in any capacity with a serious attitude and buckets of grit. Underneath the Capricorn's gruff exterior, you will find a horse that will never let you down. These horses are most comfortable living in an environment with clear boundaries and rules. They rely on structure and are less likely to be spontaneous than other horses. Capricorn horses also need honest appreciation for their efforts as they have a sensitive personality.

Aquarius – The Rabble Rouser January 20 –February 18

Strengths: Inventive, outgoing, friendly.

Weaknesses: Aloof, temperamental, uncooperative.

Around the Stable: Don't expect this horse to always be in the same place you left them. An idealistic and intellectual horse, this freedom seeker will push the boundaries around itself. Don't be surprised if your Aquarius equine challenges you as they like to do their own thing. Horses born under this sign feel most secure and relaxed in the company of other horses. In humans, they treasure honesty and authenticity and always strive to discover what's beneath the surface. Smart and eager to

please, the Aquarius horse's problem-solving skills perform well in the show ring and on the trail. Boredom frustrates these horses, so if you don't keep their minds engaged they may take matters into their own hands and end up causing more trouble.

Pisces – A Faithful Foal February 19- March 20

Strengths: Compassionate, fair-minded, affectionate.

Weaknesses: Sad, fearful, reactive.

Around the Stable: The barn cat's best friend. This horse is devastated every time they bail to go mousing. Their dreamy personality and intuitive nature make the Pisces a very interesting horse to be around. They are generally passionate horses with a very friendly nature that makes them good around children. Extremely affectionate and faithful, the Pisces horse has the highest potential for a lifelong emotional connection that is like no other horse's. Gentleness, love, and security are the keys to this horse's heart. Pisces horses seem to have a taste for music and enjoy working with a tune in the background. They do require a certain level of mental stimulation to keep motivated during training, so be sure to mix things up.

Continued on page 11

Wildwood Farm
CLIPS & CLOPS
Oak Harbor

December 2021

NIGHTWATCH® Smart Halter

Nightwatch® is a smart halter which monitors your horse's safety during the night when no one is present in the barn. The device can monitor your horse's heart rate, respiratory rate, activity, motion, and even his posture. You can access this data anytime through the Nightwatch app on your phone. Nightwatch analyzes the data and can alert you when your horse may be distressed and in need of assistance, such as during a colic or casting episode.

Nightwatch requires that your horse wears either the breakaway halter or safety collar at night in order for the device to be properly positioned. The halter or collar contains multiple sensors, processors, transceivers, and rechargeable batteries.

How does Nightwatch® work?

The NIGHTWATCH® smart halter™ uses a variety of sensors to collect real-time data on your horse's vital signs and behavior, while advanced computational software analyzes this data and calculates a quantifiable measure of their relative distress (ie, EDI® score) on a 10-point scale. When a user-defined threshold of distress is breached, NIGHTWATCH® will alert you via text, call, and/or email so you can intervene sooner.



What vital signs does Nightwatch® monitor?

The NIGHTWATCH® smart halter™ uses novel radiofrequency technology (ie, ultra-wideband impulse radar [UWB-IR]) to monitor your horse's heart rate and respiration, the two most important vital signs that correlate with pain and distress in horses. UWB-IR is a safe and very low energy radio frequency technology that measures physical changes in the vasculature and soft tissue beneath your horse's skin that correlate with their heart rate and respiration.

For the best experience, Nightwatch® recommends that a dedicated WiFi (2.4 GHz) network be available where you are using the NIGHTWATCH® smart halter™. There are some areas in the US and Canada with limited cellular (3G) coverage. However, unlike voice transmission, the smart halter™ requires only minimal cellular signal for transmission of data when not connected to a WiFi network.

www.smarthalter.com

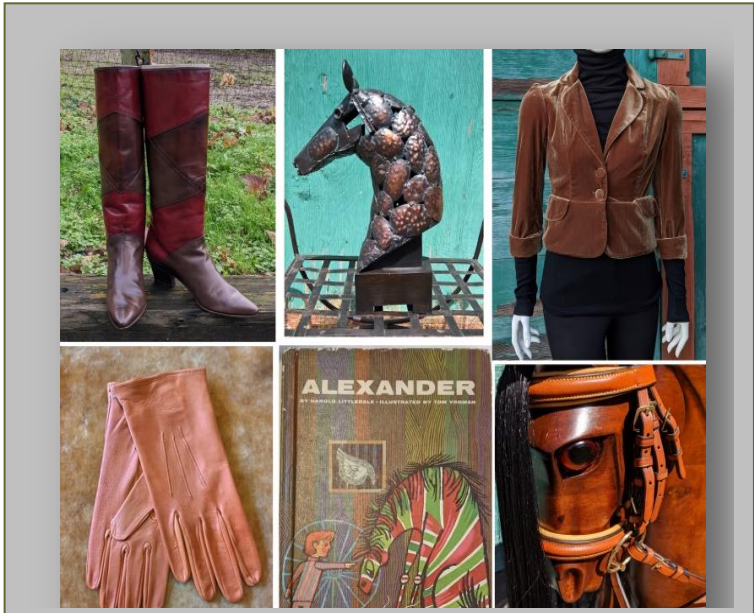


Our store is open 12:00pm – 7:00pm Monday,
Wednesday, Friday & Saturday

Shop online!
www.thenoblehorsevintage.com
www.theurbanequustrian.com



New Items for December

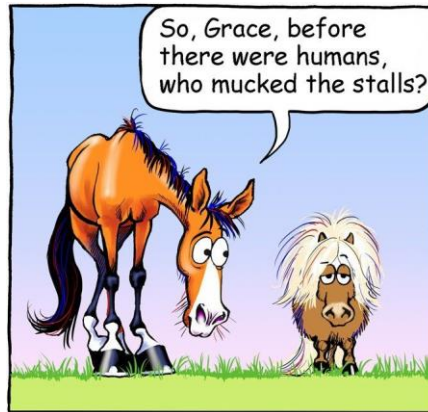




LUNGE LESSONS ARE IMPORTANT BUT TRY TO FIND SOMEONE....



www.funnyhorsecartoons.com



©2018 A.E. SABO • www.offthepace.net

OFF THE PACE | DIVA CHALKCHASER & Jockey Filep Szabo

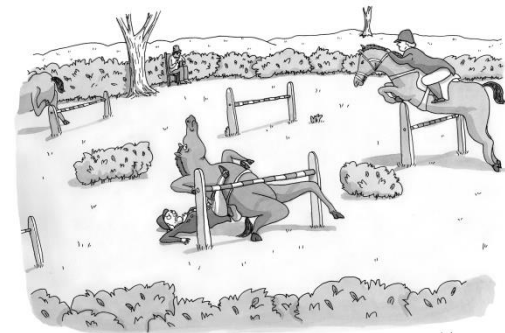
HOOVES & HORNS BY A.W. ERWIN



.....if your first date was on horseback."



Horse Artist



Kanin



WHAT PONIES ASK SANTA FOR



www.papermustang.eu

WILDWOOD FARM B&B



This is your moment.

Today at Wildwood Farm B&B



A Paramedic
*Found a little more sparkle and a
little less stress...*

Immerse yourself in the equestrian world at Wildwood Farm B&B located on beautiful Whidbey Island.

Our ranch has a long history of igniting the spark between horses and humans, whether you want a small introduction or total immersion.

Come experience the power of possibility with these magnificent creatures and explore the abundance of silent repose.

www.wildwoodfarmbandb.com

WILDWOOD FARM HAS IT ALL!

PACIFIC NORTHWEST
PNWA
Riding Academy



“A pony is a childhood dream; a horse is an adult treasure.”

-Rebecca Carroll



“I call my horses “Divine Mirrors” – they reflect back the emotions you put in. If you put in love and respect and kindness and curiosity, the horse will return that.”

Allan Hamilton



WWW.PNWRiding.com

**PACIFIC NORTHWEST
RIDING ACADEMY**

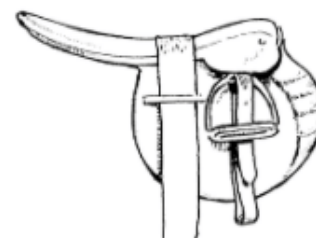
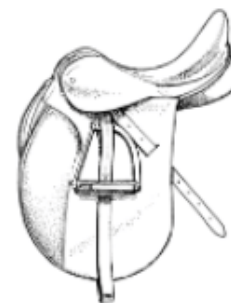
Free Horse Activity Pages

white-oak-stables.com



Parts of the Saddle

W L Y D L F P F Z F C B L A O H W L Z O K N Z F U W S U A F
 U R E H W U P A D B F Z C L T Y N D M J U D O K G L T M D S
 J Q W N R Z G B N L A V M R O F R E V O C D A E R T G W J O
 E I L R A H M B T K I G I B W R U R U X G U G N I S U O H S
 C H I L H P K B K Y D G H V L N E K Q X C L T C U R K N X E
 P T D D X A O W R U G L G Y I U R E T Y C P V P W P D X I A
 S A O V E X S E C I K L X J I B M K N I H I A F Y Y T J J T
 D A K D G P P H N U V M T H Z L L C B K K A C E D Y E O I O
 Y U K N U E X G E A Z P S V E E Q O Y X M F V D H K R M Y U
 S Z R B E Y D O K P D P P M L V I Y D L E J J L Y V Y G O K
 C E W K I E N G L I S H W S T I R R U P L E A T H E R L I C
 G N T D E O R K L G W G U N N A T S S X G N H A T R I T X
 H D R Q T M F V H W V M G G A S H G A R C W Q O W R O R K Q
 S O H I P U I S D D E U J N C D L Q D G R U Z L S I Y T O G
 C H B H J A Z Y Q Z Z S P W S V E W D U Q B R F C K N W G R
 H A G B O G B V H A Y P T L S Z Z G L F U F G Z E S P P I M
 E J J I L K R T M H E A Q E E H X E E G E S Z I X U T G X T
 X Z Z P F E O A O E P R K V R M E R F D P N Z D P K G N Z Y
 T G P T O P S R R P E T K I N N M Y L W W I D R P I H J P W
 P M O H S E N T I O J S T W I S T O A D H Q N E N T H Z P K
 W D S T H B N Q R G C E O H C N O C P K A H U G R G C J C F
 N T C W I S S L M A H I A P Y L I T R B F C S R K O J O W M
 O B B L E P O G G V P T N U O J V K J H H L E L N Y M C N M
 T C L G U L L E T M I I N F L E P L W C O S T I E A J K D H
 W E O J K A L J O B K K Z M N C X X T D U M R Q Y M Q E F X
 T N R S X L M U K A V A G C A E R E X S Z U S N B O R Y X J
 K H A F Q M D E X I Q T A Q Y K Y N Q R J A F R E L U V M M
 Y S T X F M C J M Z A M S U G D D Y X A G H U P R V H C N L
 Y U U Y V P K C S B T F A E N X L X Q U E S Q Z I H A K M V
 B K V F M X W O C M H E A V G N O N K R N V C S G E Q C U B



- | | | | | | |
|-------------|----------|---------------|---------|-----------------|---------------|
| BILLET | BLEVINS | CANTLE | CONCHO | ENGLISH | FENDER |
| GIRTH | GULLET | HOBBLE STRAP | HORN | HOUSING | JOCKEY KEEPER |
| PANEL | KNEEROLL | POMMEL | RIGGING | SWELL | RIGGING DEE |
| SADDLE FLAP | SEAT | STIRRUP | SKIRT | TIE STRAP | TWIST |
| TREAD COVER | WESTERN | <u>LATIGO</u> | FORK | STIRRUP LEATHER | |

Solve this question by filling in the missing letters in bold above.

Do ___u__i__e to ri___ in a__en__lis__ or __est__n__ ___le?

Nutrition Corner

Protein – An important Nutrient.

Protein may be the most misunderstood nutrient class when it comes to feeding horses. Protein is used in the formation of tissue, such as muscle, as well as to make hormones, enzymes, and antibodies.

Protein supplied to the horse beyond requirements cannot be stored by the animal for later use. Instead, it is degraded. While this degradation can provide some energy for the animal, urea is produced and must be excreted in the urine. This provides additional work for the kidney and increases water loss from the body. At the same time, research suggests that excess dietary protein may affect acid-base balance as well as calcium retention, both of which may be of concern in athletic and growing horses. This, combined with the fact that protein is one of the more expensive aspects of horse rations, suggests that horses should be fed to meet protein (or more appropriate, amino acid) needs without greatly exceeding them. Protein required by the mature horse at maintenance is simply to maintain homeostasis. At all times, the body is breaking down and rebuilding tissue, as well as creating hormones, enzymes, and antibodies. At the same time, a small

amount of protein is lost via feces, urine, and sweat. Still, in most mature horses at maintenance can easily have their protein requirement met by good quality forage (either hay or pasture). Horses at maintenance that are deficient protein will generally have weight loss, in the form of muscle loss, even as their energy needs are being met.

Generally, additional feed supplied to meet the increased energy demands of the working horse is adequate to meet the slightly increased amino acid need. Again, overfeeding of protein to the athletic horse should be avoided as it may negatively impact acid-base balance and calcium retention. Exercising horses that are still growing should be carefully fed to maintain proper growth without over-supplementation.

Total tract protein digestibility in forages may range from 73-83% for alfalfa, to 57-64% for orchard hay; however, prececal digestibility (that which is occurring in the small intestine) is only about 28.5% and 16.8% respectively.

WILDWOOD FARM AND TRIPLE CROWN FEEDS.
Our partnership with Triple Crown began in 2014 through a promotion with the USEF encouraging farm members to compare their current feeding programs with Triple Crown products. We have found the TC products to be superior over other products primarily because of the EquiMix technology and the research support of a leading edge team including independent representatives of Equine Universities, Medical clinics and top level riders and trainers

MEET MAX

Maxamillian (Max) came to Wildwood Farm in August of 2020, an adoption gift by a long-time friend of the farm who knew we would give this then-20 yr old the perfect home for the last years of his life.

Max is a leopard appaloosa, meaning he has "Spots" all over his body that resemble leopard spots – a beautiful coat pattern that makes him not only handsome, but really eye-catching.

Max had a career as a Western show horse and won many championships in halter, western pleasure and western performance classes in his native Tennessee. In 2018, when he was 18, he was given an injection that caused his body to react adversely and he foundered; although the damage to his front feet were minimal it did end his show career.

He was purchased as a trail horse and brought to Washington State, but he was a little too tall for his new owner to climb on safely (she had some disabilities) so he was offered to us.

Today Max enjoys being a part of our riding



academy and is also a great trail horse for our guests. He has many fans including one of our instructors, Sarah, who had her school pictures taken with/on him.

The most familiar and characteristic of the appaloosa patterns is probably the full leopard pattern which gives the leopard complex its name. A lot of people get confused by these patterns because they think of them as being about the *spots*. In fact, spots are a side-effect of the *absence of white*. Appaloosa patterns are simply a type of *white* pattern. The dark spots on a full leopard are not spots *on* white but *holes* in the white, revealing the horse's coat color 'underneath'. So for instance a genetically black horse will have black 'spots' and a chestnut will have brown 'spots'

A chat with AMBER MARSHALL The young star of HEARTLAND

Interviewed by Ken Amoroso

To say the least, Amber Marshall has the ultimate dream job. The vibrant young star of television's Heartland is enjoying her twelfth season on the popular Canadian based series as the lead character, Amy Fleming. For a self-professed lover of animals and an avid horsewoman who enjoys her free time riding her beloved equines in the beautiful outdoor spaces of Canada's vast rural landscapes, the age-old adage "art imitates life" is an understatement.

You have a lot of animals. Why are these furry friends so important to you?

Animals have always been a huge part of my life. From when I was three years old, I wrote a song about how I was going to be a farmer when I grew up. My parents were just so accommodating with all the little critters I wanted to bring home. We had dogs, cats, and rabbits. Then when I was five, I went to a fair that had pony rides, and that was it. I had to do this. We ended up leasing a pony named Tony. My parents would take me out to this farm every weekend and lead me around on Tony, and from there my passion just grew. I started taking hunter jumper lessons, and I got my first Quarter Horse when I was 12. Now I have dogs, cats, horses, cows, rabbits, chickens, turkeys, and everything under the sun, and I just love every minute of it.

Tell us about your horses, both on and off set. How big a role do they play in your life?

Horses are a huge part of my life and they've become more so since I've been on Heartland. For me, they're not just coworkers, they make my job so much more fun and enjoyable. Some of my favorite scenes are shot with horses, because they're just so real and they're always in the moment. At home, we have incredible horses. I have a beautiful black horse named Hawk. He looks like Spartan on the show. Everyone always asks, "Oh, does he play on the show?" But those are my babies, and that's what I get to go home to. Although I don't work with **them** on set, they do photo shoots with me all the time, and they know the drill.

Landing the role of Amy Fleming on Heartland. How did you get the part?

I never really thought it would be a long-term thing. Being an actor, we're used to doing pilots that never go past that first episode. At the time the calls went out for Heartland, I was on a pilot and wasn't able to make it in for any of the auditions. On the way home my agent called me. He said, "There is this role that is perfect for you, and they're going to camera next week and they still haven't found anyone." He said, "I'll send you the script, take a look and put something on tape." After reading the script I put together a tape and sent it off. At the beginning of my audition I said, "Hi, I'm Amber Marshall and I have two horses. I love acting and I love writing." My producer still says to this day, "We didn't even need to see the rest." He's like, "Just in that moment we were like, yes!" I think the fact that I had horses and I loved acting just brought it all together.

Describe a day in the life on set of Heartland

The funny thing about Heartland is it's so similar to my everyday life. So a lot of times I'll wake up and I go out and I feed my horses, and then I go to work. Then I go out and pretend to feed my horses, and it's just such a funny thing, because there's not many occupations like it. For me, being on set is just so comfortable, because I'm right in my element. We film in a beautiful location—Millarville, Alberta, Canada,—my office has the best view I could ever imagine. We're outside in some of the most beautiful places in the world and I think to myself every day, This is my job. I am paid to come here and ride horses in some of the most beautiful locations. How did I luck out on this? So, I'm still very blessed every day to be able to do what I do.

What does Amber like to do?

I think that Amber and my character, Amy, are very similar people. You know, I love horses, I love the ranch lifestyle, so for me, on my off time, I do a lot of things that my character does on screen. One of my favorites is coming out to my friend's ranch to gather bulls in the hills, or go down to the river and just go for a nice ride, or even take the tubes down and just go for a nice river float. It's a time to relax and enjoy and not worry about the hustle and bustle of everything that's going on. I'm not much of a city person. I don't like going into town unless I have to. So whenever I have time off, I like to just relax, go for a ride, go fly-fishing, do something where it's just quiet

You have a pretty substantial fan base, how do you stay connected?

Social media has made that so much easier. I talk to people all over the world, and get instant feedback on things that we're doing on set, and what they want to see in Heartland—what kind of pictures they want to see, my animals and projects I'm working on. For me, Instagram has been a great outlet because I love taking photos. I like to share my experiences with everyone else. I've never been into the whole selfie thing, so on my social media I make a point of showing things through my eyes as opposed to seeing myself doing those things. So you'll find a lot of animal photos, that's primarily what takes over my Instagram. I find it's rewarding for me to be able to share with other people in hopes they'll get some joy out of it too.

What's on the horizon for you professionally?

I never, ever thought Heartland would go this long. I think this is every actor's dream, but it's very rarely a reality. I'm going to hang out here on this ranch as long as I can. I think it's one of those jobs where you can't become complacent, because every day is something new and you're working with animals and beautiful places. I hope Heartland goes on for a long time, but when it doesn't and when that day finally comes, I want to take some time just to enjoy my animals and my family and my ranch. For me it's always about keeping things fresh. I don't know if I will pursue acting after this. I love it and if things come to me, I'm not going to turn them down, but I'll always keep my eye open for different doors opening.

HORSES IN THE CHRISTMAS SPIRIT!



MERRY CHRISTMAS

Each Christmas, the Welsh Try to Outsmart a Horse Skull Puppet

Then they drink.

BY ERIC GRUNDHAUSER DECEMBER 21, 2017



CHRISTMAS CREATURES ARE ALL THE rage. From the Alpine Krampus tradition to Iceland's Yule Lads, there's no shortage of fascinating anti-Santas hiding out there in the world. One seasonal specimen that's more likely to inspire nightmares than visions of sugar plums is the Mari Lwyd of South Wales, a festive, skeletal horse spirit with a penchant for rhymes.

In the simplest terms, the Mari Lwyd custom involves a group of revelers carrying a horse skull door to door and demanding entry through song. The focus is on the Mari Lwyd itself, a jaw-articulated equine skull decorated with ribbons, ornaments, and festive bits and bobs, plus a sheet draped over the person carrying it, giving the whole thing a ghostly appearance. Mari Lwyd caroling generally takes place around Christmas and New Year's, though sometimes also in mid-summer or Halloween.

Traditionally, when arriving at a house, a Mari Lwyd troupe will sing out a challenge to the people inside before performing a sort of call-and-response called a "pwnco." Anyone inside the house is then tasked with replying in a rhyme scheme even wittier than the creature's. After the rhyme battle, the Mari Lwyd is allowed inside, where the players are given food and drink before heading out to darken someone else's doorstep.

While the exact origins of the tradition are unclear, like the Krampus, the Mari Lwyd seems to have its roots in pre-Christian, pagan tradition. In an article over at [Hyperallergic](#), Allison Meier points out that the spectral horse

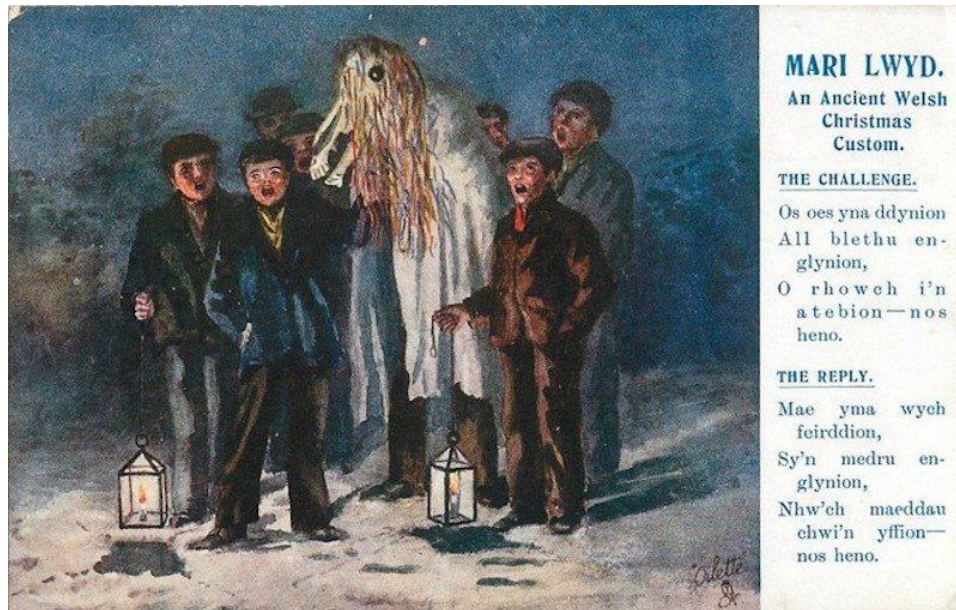
figure has also been linked with other “white horse” imagery found in U.K. culture, including the medieval Welsh literary figure Rhiannon. And while the Mari Lwyd is a tradition unique to Wales, the veneration of a domesticated animal—and the horse in particular—as a mythic symbol can of course be found all over the globe.

The name Mari Lwyd is sometimes considered to mean “gray mare,” although another translation of the name, which can be found on the website of the National Museum of Wales, is “Holy Mary.” The explanation behind this latter translation correlates the festival with a Christian attempt to appropriate the local custom in the regions it was practiced

While the true origins of the custom are clouded by time, it has survived sporadically since at least the 1800s, despite backlash against its pagan roots and its booze-soaked reputation. The rough outline of the tradition remains intact, though its modern display has changed over time and can depend on the town. In the village of Llangynwyd, for instance, where the Mari Lwyd is brought out around New Year’s, revelers tend to visit pubs as well as houses and stop to harass passersby on the street.

In general there is often a roguish, merry air to the whole undertaking, and the legend of the Mari Lwyd is highly adaptable. In a 2013 video put out by Music Traditions Wales, an organization that has worked to keep the custom alive by creating flat-pack artificial Mari Lwyds for anyone who doesn’t have a horse’s skull, one man recalls his father warning that the Mari Lwyd would take him away if he misbehaved.

Even if you aren’t in Wales, there’s no time like the present to mix up your Christmas traditions and make a Mari Lwyd of your very own. You don’t even have to use a real horse skull. You’ll be helping to keep a Welsh tradition alive, plus possibly freaking out your neighbors.



Aries –The War Horse**March 21 – April 19****Strengths:** Intuitive, aggressive, Passionate **Weaknesses:** Moody, Impatient, Impulsive

Around the Stable: Fast and furious, this horse loves to kick up its heels and run! The Aries horse's fiery demeanor leads to a desire to always be the boss. Born a natural leader, this horse tends to act first and think later. Because of this impulsiveness, Aries horses require firm guidance to help them manage their bursting energy. On the pasture, this horse is likely to be high in the pecking order. In the show ring, their fire and flashy movement will catch the eyes of judges, competitors, and crowds. The Aries horse may be a challenge for some to handle, but in the right hands, their character will shine. These horses certainly enjoy a challenge and are extremely competitive. When waiting for their turn to enter the ring, they quickly grow impatient and often prance around. However, when the time comes, the Aries horse sure knows how to have fun!

Taurus – The Preening Prancer**April 20 – May 20****Strengths:** Realistic, dependable, devoted **Weaknesses:** Stubborn, possessive, unbending

Around the Stable: Instead of a pouty rump-to-the-door, this horse displays a big show of affection when you arrive. In a Taurus horse, you have found a good-tempered and loyal companion. Always happy to see you, this horse will kick up a fuss if you don't pay them attention once you get to the barn. Although these horses can be stubborn and willful at times, they can also form extremely strong bonds with their humans. A Taurus horse loves nothing more than a steady routine and a caring grooming session. They love to get comfortable and relax under your massaging hands, so regular grooming is important in bonding with this horse. They are also very food-oriented, so make sure you have a well-balanced feeding schedule in place. What Taurus horses despise the most are new situations and any changes in routine. Make sure to always stay calm and patient when introducing something new, and do it very gradually. Otherwise, this horse might entirely refuse to cooperate and will make your life a lot more difficult.

Gemini – A Split Rein Traveler**May 21 – June 20****Strengths:** Gentle, Affectionate, Versatile **Weaknesses:** Indecisive, Nervous, Inconsistent

Around the Stable: She loves a good bath, and an immediate roll in the mud afterwards. The Gemini horse is characterized by duality. Their actions one day are often completely different from the next, and their personality always has two sides. This makes the Gemini horse an unpredictable equine that will keep you on your toes! Horses born under this sign need constant stimulation to keep them from getting bored. They are very playful and enjoy playing fun games with you. They are also curious by nature and like versatility in their routine. The Gemini horse is a social butterfly that may want to spend more time with the herd when you're waiting for them to come in. They hate being alone and are quick to make friends with horses as well as other animals. Gemini horses also have a good sense of humor and crave the opportunities to express it.

Cancer – Tenderhearted Trotter**June 21 – July 22****Strengths:** Nurturing, emotional, intuitive **Weaknesses:** Moody, insecure, suspicious

Around the Stable: This loner likes long trots on the beach, at sunset, with you and only you. A hard exterior shields the highly sensitive interior of your Cancer horse. This horse's desire is guided by emotion, and how they feel in the moment will determine their actions. They also tend to bottle things up and need emotional space to express their feelings. It's not easy to get the Cancer horse to open up to you, however, the reward is great once you've won their affection. They are often one-person-horses that are happiest spending time with their special person. This is not the best horse to lend to your friends and you may hear comments about them acting differently in the company of strangers. This careful fellow is a great companion for the trail. The Cancer horse's intuitive ability and tenacious nature make them an excellent navigator of the challenges in the wild. Treasure this horse as they are yours forever.

LEO –The Brave Bronco**July 23- August 22****Strengths:** Courageous, passionate, forgiving **Weaknesses:** Arrogant, Stubborn, Lazy

Around the Stable: Extra treats are a sure way to this horse's heart! The Leo horse has a dignified passion to succeed and impress. This horse shines brightest at competitions as it loves being in the center of attention. Ignore their passion and you may see their lazy side take hold. This horse desires greatness, even if only in your eyes. Shower them with affection and love and you will have won their loyalty forever. If you make mistakes along the way, a sincere effort to make things right will be well received. These brave horses will run to the end of the Earth for you if you reward them each time they push for the finish. Great with livestock, the Leo horse can help you with your chores without fear or hesitation.

Virgo –Dressage Dynamo**August 23 – September 22****Strengths:** Kind, Stable, Perceptive **Weaknesses:** Shy, Worrier, Uptight

Around the Stable: This horse appreciates a tidy stable and a thorough groom! Grounded and in touch with her senses, the Virgo horse may need a push to relax and enjoy themselves. Their hard-working nature is a treasure and makes them perfect for classical riding competitions. Give your Virgo horse plenty of mental stimulation and you will not be disappointed with their performance! A love for the center stage will have the Virgo horse preening and showing off to the judges. Set them up for success and enjoy the fruits of your hard labor together with every blue ribbon she brings you. Virgo horses can be very adaptable to the world around them so long as you allow them the time and space to analyze new things. Sudden changes or high expectations will stress them out and result in a negative attitude. Make sure your Virgo horse is mentally and physically prepared for what you ask them to do.

Wildwood Farm CLIPS & CLOPS Oak Harbor

2326 Happy Valley Rd
Oak Harbor WA 98277

Libra – The Peaceful Pony September 23 – October 22

Strengths: Fair, Trusting, Intellectual

Weaknesses: Indecisive, Grudgy, Meek

Around the Stable: With you on her back, she'll work extra hard to enjoy your laughter! Charming with a desire to be liked, Libra horses are the flower children of the barn. A seeker of balance, they enjoy the company of horses and people alike. Libra horses will do whatever it takes to keep the peace, and you'll see them avoiding conflict in the herd whenever possible. This amiable horse will enjoy intellectual and physical challenges. They are happy with every rider and have the patience and kindness to help the less experienced. These horses will go out of their way to please their human companions and expect nothing but fairness in return. The Libra horse is quick to trust and conform to its surroundings, often realizing they have made a bad choice when it's too late. Reassuring music, affection, or a lavish soapy bubble bath can ease your Libra horse's raving emotions.

Scorpio – The Cowboy's Companion October 23- November 21

Strengths: Competitive, Passionate, Calm

Weaknesses: Jealous, Violent, Distrusting

Around the Stable: Expect a nip on the shoulder if you pay too much attention to this horse's stall mates. The natural resourcefulness of the Scorpio horse is part of why they are every cowboy's best friend. Brave and trustworthy, this horse will react intensely if needed. Scorpio horses are very protective of themselves and very self-sufficient. This horse's intuitive nature may reveal itself when you are working together. To get along with Scorpio horses, you need to convince them that you are the leader using gentleness and firmness. If you try to use force and intimidation, this horse will only shut down and become a defensive beast that bites and kicks. Once you've earned their respect, the Scorpio horse will be your best friend. At the same time, they won't want to share you with others and will be sure to let you know when you pay too much attention to other horses.

Sagittarius – The Free-Spirited Filly November 22 – December 21

Strengths: Inquisitive, generous, optimistic

Weaknesses: Reckless, impatient, temperamental

Around the Stable: High fences are just a fun challenge for this spirited horse! Naturally curious, the Sagittarius horse enjoys exploring the world around them. They constantly crave new knowledge and require variety in their training routine in order to be efficient. An excellent traveler, the Sagittarius horse is supremely well suited to the free and bold challenge of field hunting and steeplechasing. Their reckless side can be focused on tackling jump courses and racing across wide-open fields. The Sagittarius horse's desire to experience as much of the world as possible will make your adventures together fulfilling and unique. Horses born under this sign desire freedom and thrive in large open areas. When confined to stables, they become prone to depression and injury and will try to set themselves free. Sagittarius horses can be excellent escape artists when their freedom is limited, so refrain from locking this horse up.

