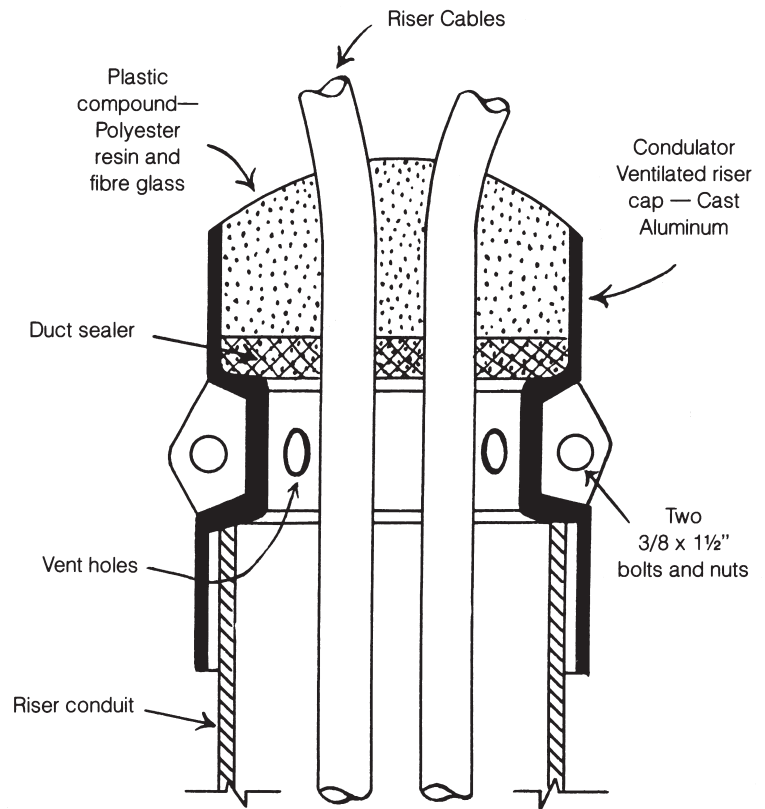


# CONDULATORS KEEP CABLES COOL!

## TYPICAL CONDULATOR TERMINATION

- 1** Pull cables into riser and allow them to settle naturally. Remove any grease or dirt from cable sheathes to 6" above top of riser duct. The plastic compound adheres tenaciously to cables, and no additional cable support is needed for any normal riser.
- 2** Install both halves of condulator ventilated riser cap onto top of conduit and tighten bolts. Small end of cap fits Type 40 and Type 80 PVC plastic conduit, rigid metal conduit or plastic pipe. Large end fits half size larger rigid metal conduit. Ventilated riser caps are available in 2", 3", 4", 5" and 6" sizes. Install ½" layer of duct sealer compound around cables.
- 3** Add catalyst to can of plastic resin and fibre glass. Curing time varies inversely with ambient air temperature, and complete hardening will take ten minutes at 80 degrees F and a half hour at 34 degrees F.
- 4** Fill top section of riser cap with resin mixture, work it between cables and build up to one inch above top of cap to aid in shedding water.



### A PARTIAL LIST OF CONDULATOR DISTRIBUTORS

**CED/Twin State Electric Supply**  
Wilder, VT.

**Consolidated Electrical Distributors**  
Barre, VT.

**Northeast Electrical Distributors**  
Brockton, MA.

**Electrical Wholesalers, Inc.**  
Cranston, R.I.

**Gilman Electrical Supply**  
Bangor, ME.

**Graybar Electric Co.**

**National Grid**

**Green Mountain Electric Supply**  
Colchester, VT.

**Standard Electric Co.**  
Bangor, ME.

**Walsh Electric Supply**  
Colchester, VT.

**Westinghouse Electric Supply**

**CLS Electrical Distributors**

**Yankee Electric Supply**  
Winooski, VT.

**REMARKS:** Tests indicate an ambient air temperature of about 5 degrees C lower in a ventilated riser than in a sealed one. The current carrying capacity thus gained will be about 6 to 12 percent, depending on cable construction. The cap, without dangerous short radius bends, secures any number or size of cables against slipping back into conduit. Cables are dryer in a ventilated riser, and thus there will be less likelihood of electrolytic corrosion of metallic sheathed cables. Gas leakage into conduit systems will be vented out through ventilated riser, minimizing the danger of manhole explosions.

**HAPPINESS IS  
A COOL RISER**

**ROBERTS ELECTRICAL PRODUCTS CO.**

219 FIAT AVENUE • CRANSTON, R.I. 02910

[www.robertselectricalproducts.com](http://www.robertselectricalproducts.com)

# ROBERTS ELECTRICAL PRODUCTS CO.

219 FIAT AVENUE • CRANSTON, R.I. 02910

www.robertselectricalproducts.com

## DO YOU BELIEVE IN VENTILATION?

Risers ventilated with CONDULATORS are COOLER and DRYER!

Over thirty years of actual installation experience with CONDULATOR terminated risers has proven their merits. Thousands of them are installed across the U. S. with all types of conduit materials and cable constructions — voltages from 120V to 34.5KV.

## CONDULATORS SAVE SEVEN WAYS

1. Cost less than any other conduit termination
2. Require less labor to install
3. Permit shorter conduit and cable runs
4. Increase cable capacity by conduit ventilation
5. Keep conduit and cables dry — minimize corrosion
6. Fit all conduit materials including Type 40 and 80 PVC plastic conduit, rigid metal, and Type I and II fibreduct.
7. Fit all sizes and numbers of cables without special fittings yet support cables securely.

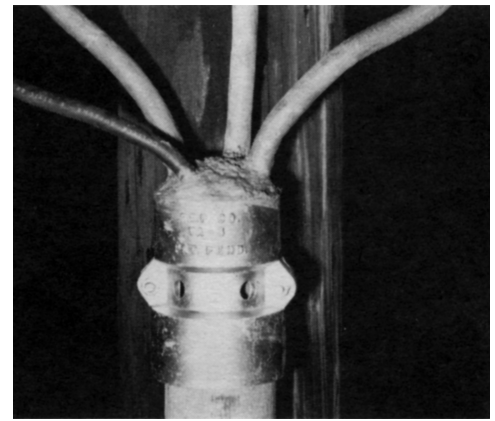
## COMPLETE KIT MAKES INSTALLATION A SNAP!

CONDULATORS fit the following Conduits:

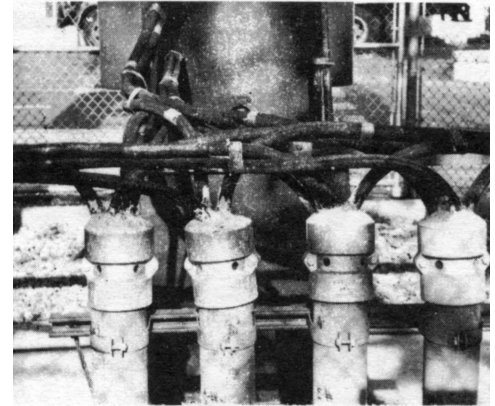
Cat. No.	Steel Conduit	Type I and Type II Fibreduct	Type 40 and Type 80 PVC Plastic Conduit
VAK-2	2" + 2½"	2"	2"
VAK-3	3" + 3½"	3"	3"
VAK-4	4" + 4½"	4"	4"
VAK-5	5"	5"	5"
VAK-6	6"	6"	6"

Each kit contains sufficient fiberglass putty, hardener, duct sealing compound, spatula, and sandpaper with instructions for making a complete installation.

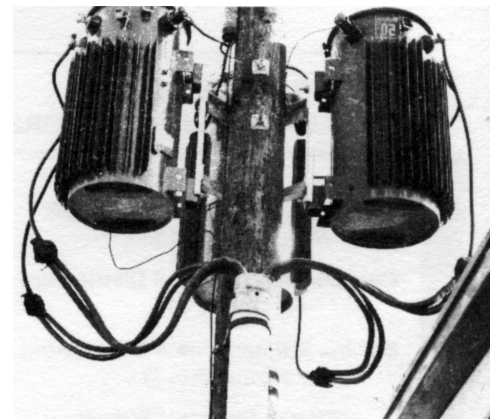
**CONDUIT VENTILATORS = CONDULATORS**  
**Condulators Keep Cables Cool!**



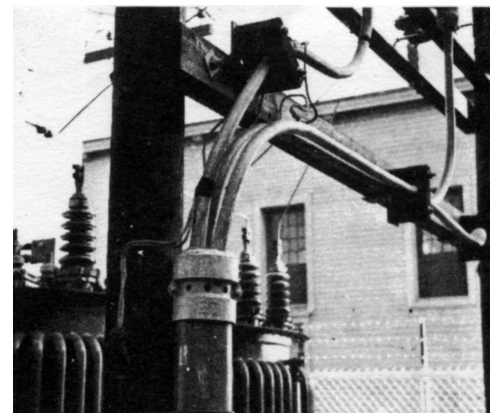
3" CONDULATOR on 3" Conduit  
with 4.16 KV Riser.



Four 4" CONDULATORS on 4"  
Steel Conduit with 120/208 V  
service to manufacturer.  
No secondary bus required!



5" CONDULATOR on 5" PVC Conduit  
with 120/208 V service to motel.



5" CONDULATOR on 5" Steel Conduit  
with 23,000 V service to substation.