

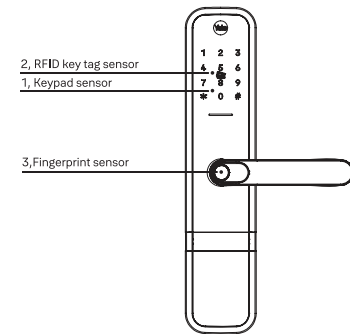
Size:180*115mm 16pages 460*360mm



3. Usage of Product

3.1 Unlock method

3.1.1 Fingerprint, PIN code and RFID key tag



Fingerprint, PIN code and RFID key tag

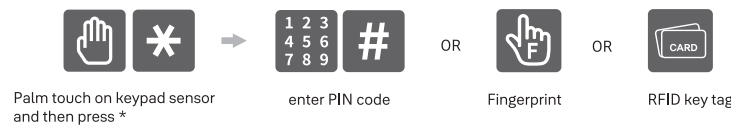
- 1, Palm touch to activate the keypad, enter PIN code and press (#) to confirm.
- 2, Place RFID key tag on RFID key tag sensor.
- 3, Place registered fingerprint on fingerprint sensor.

Notes

- Security enhancement to enter any number before or after entering a PIN code to prevent the PIN code from being exposed.
The real password is placed first or last, for Example: (*****123888 Or 123888*****)+(#), "*****" is password.

3.1.2 Unlock door with smart etiquette

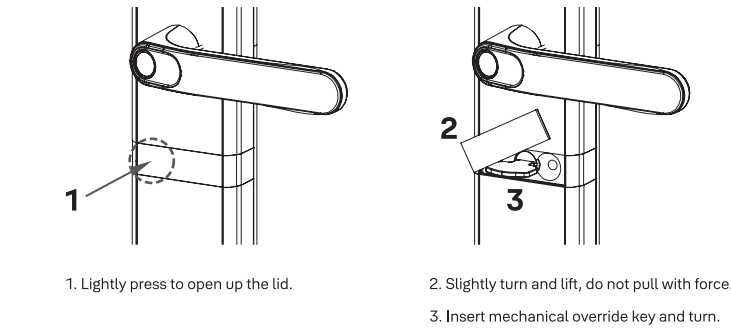
Activate silent mode to unlock the smart lock in silent. (voice notification muted)



--06--

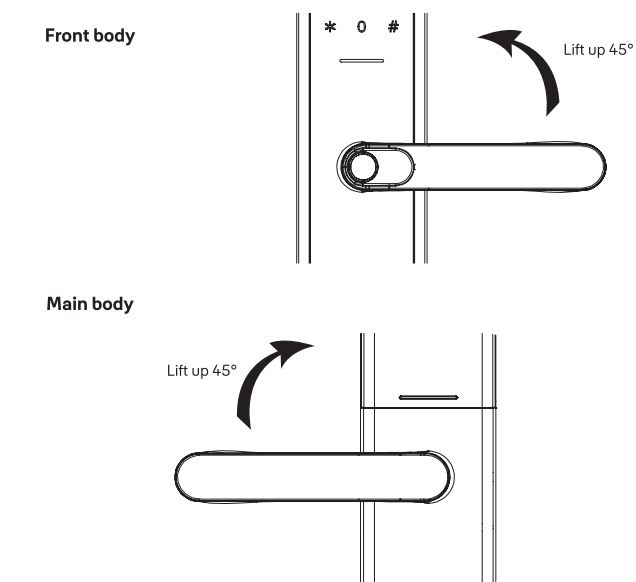
3.1.3 Mechanical override key

In the event of an emergency, such as forgetting password, running out of battery or other unexpected circumstances, the mechanical override key can be used as back up to unlock the product.



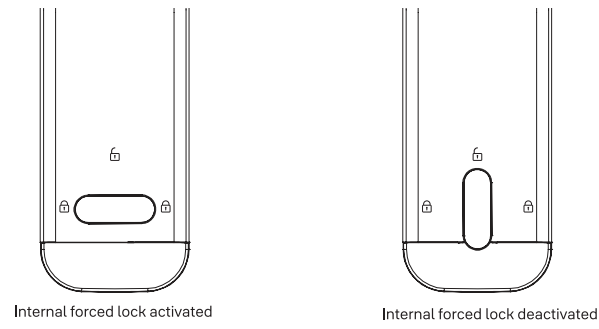
3.2 Secure the Lock

Once the door is closed, lift up handle to secure the lock.



--07--

3.3 Internal forced lock



Alarm

Once internal forced lock function is activated, **all credentials** such as fingerprint, PIN code, RFID key tag and override key will be **NOT** able to unlock.

3.4 Protection and alarms

3.4.1 Low battery alarm

When the battery power is low, voice guide will be prompted "low battery, please replace new battery" for every subsequent unlocking operation. At the same time, The red led will turn on, in the situation, the digital lock can only be operated about 50-60 times. Please be reminded to replace with new batteries as soon as possible when the voice prompted.

--08--

3.4.2 Tampering alarm

A tampering alarm will be triggered when the front body is detached forcefully.

To deactivate the alarm, please press the Registration button(R).

3.4.3 3-mins lock-out

When either fingerprint, RFID key tag or PIN code accumulated with 5 failed attempts within 3 minutes, the 3-mins lock-out will be triggered with keypad backlight flashes.

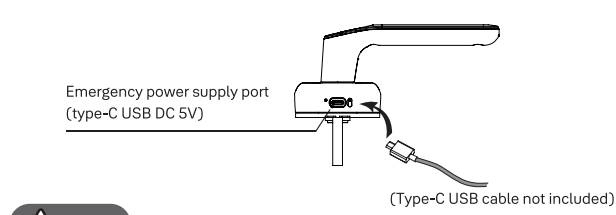
1. The 3-mins lock-out will be lifted after 3 mins.
2. Other deactivation methods:
(1) Press the Registration button (R) at the main body.
(2) For networking version, the 3-mins lock-out can be deactivated by using Yale Home APP unlock function.

Notes

- When alarm is triggered, the alarm will be deactivated automatically after 3 mins, or to deactivate it manually, please press registration button.

3.5 Emergency power supply

When the product is out of battery and not able to operate, an emergency power supply can be plugged into the emergency power supply port via type-C USB cable for emergency access.



Notes

- Emergency power supply is only used for emergency purpose and it is not recommended for frequent use.
- DC 5V power supply is needed with Type-C USB cable.
- Battery charging is not supported.

--09--

3.6 About battery

3.6.1 Battery lifespan

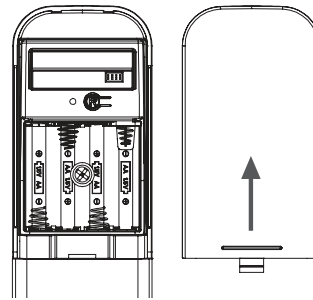
Powered by 4 x AA Alkaline batteries. Estimated lifespan is around 1 year (daily 10 times usage, however, it may vary depending on actual usage.)

3.6.2 Low battery alarm

Please be reminded to replace with new batteries as soon as possible when the voice prompted.

3.6.3 How to change battery

1. Remove battery cover from main body
2. Remove old batteries and replace with new batteries
3. Secure the battery cover

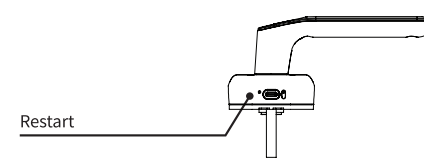


Notes

- For new battery replacement, please change all 4 x AA Alkaline batteries, do not mix old and new batteries or mix different battery brand as it may affect the product performance.

3.7 System restart

In the event if there is any system error and not able to operate the product, use a tool to press the system restart button for a reboot.



--10--

3.8 Yale Home App* & Yale Connect Wi-Fi Bridge/Hub** set-up guide

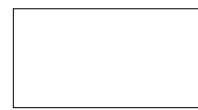
* For CONNECTED version lock only. Please follow manual section 2.12 Bluetooth setting to do "Bluetooth set" before using Yale Home App.

** The Yale Connect Wi-Fi Bridge /Hub is NOT included.

Step1: Download the Yale Home App from the Google Play Store or Apple App Store.



Step2: Scan the QR code which can be found on the back of your smart lock or below and follow the in-app instructions.



If you have any questions, please contact us at:

www.yalehome.com

Google Play and the Google Play logo are trademarks of Google LLC.

Apple, the Apple logo, iPhone, and iPad are trademarks of Apple Inc., registered in the U.S. and other countries and regions. App Store is a service mark of Apple Inc.

--11--

4. Daily maintenance

1. Do not install the product in an outdoor environment with direct exposure to weather.
2. To prevent dirt on keypad and fingerprint sensor area, we recommend to use soft cloth for wipes. Do not spray water directly or wipe with chemicals such as benzene, gasoline or alcohol.
3. Please use good quality alkaline batteries. It is recommended to replace the batteries every 10 months and check for battery leakages periodically.
4. It is recommended to batteries the battery immediately when "low battery" alarm is triggered to avoid any inconvenience.
5. Adjustment of the striker plate is recommended if the deadbolt is not able to retract or recede well due to door deformation.
6. The mortise may be damaged if the door is closed hard with the deadbolt protruded.
7. Please keep at least 1 mechanical override key out of the house (office / parents' house) for emergency use when needed.
8. When the battery is out, an emergency power supply can be used through the emergency power supply port via type-C USB cable for emergency emergency power supply.

--12--