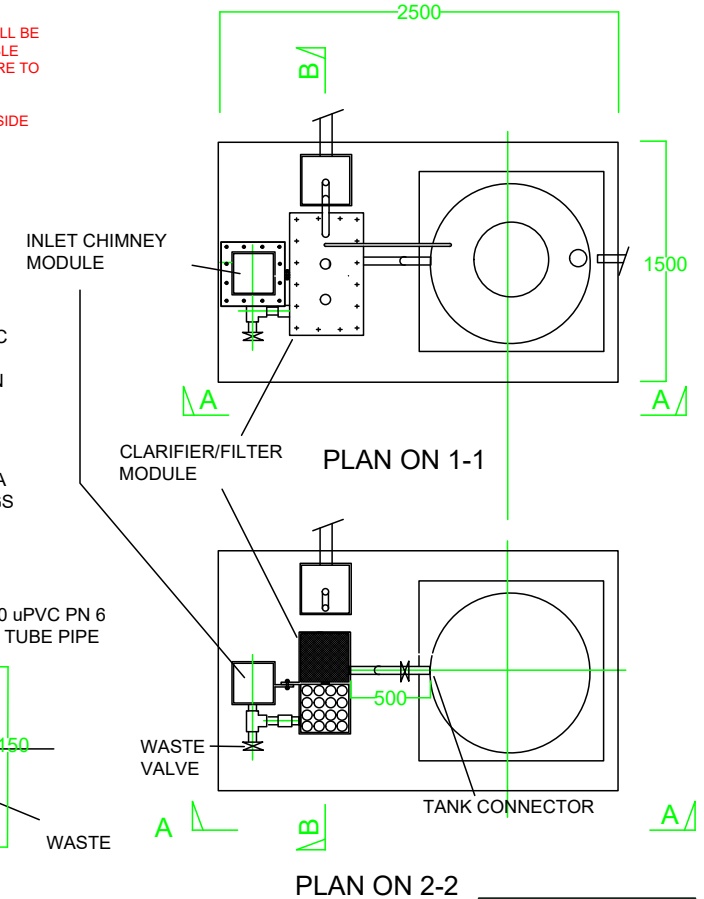
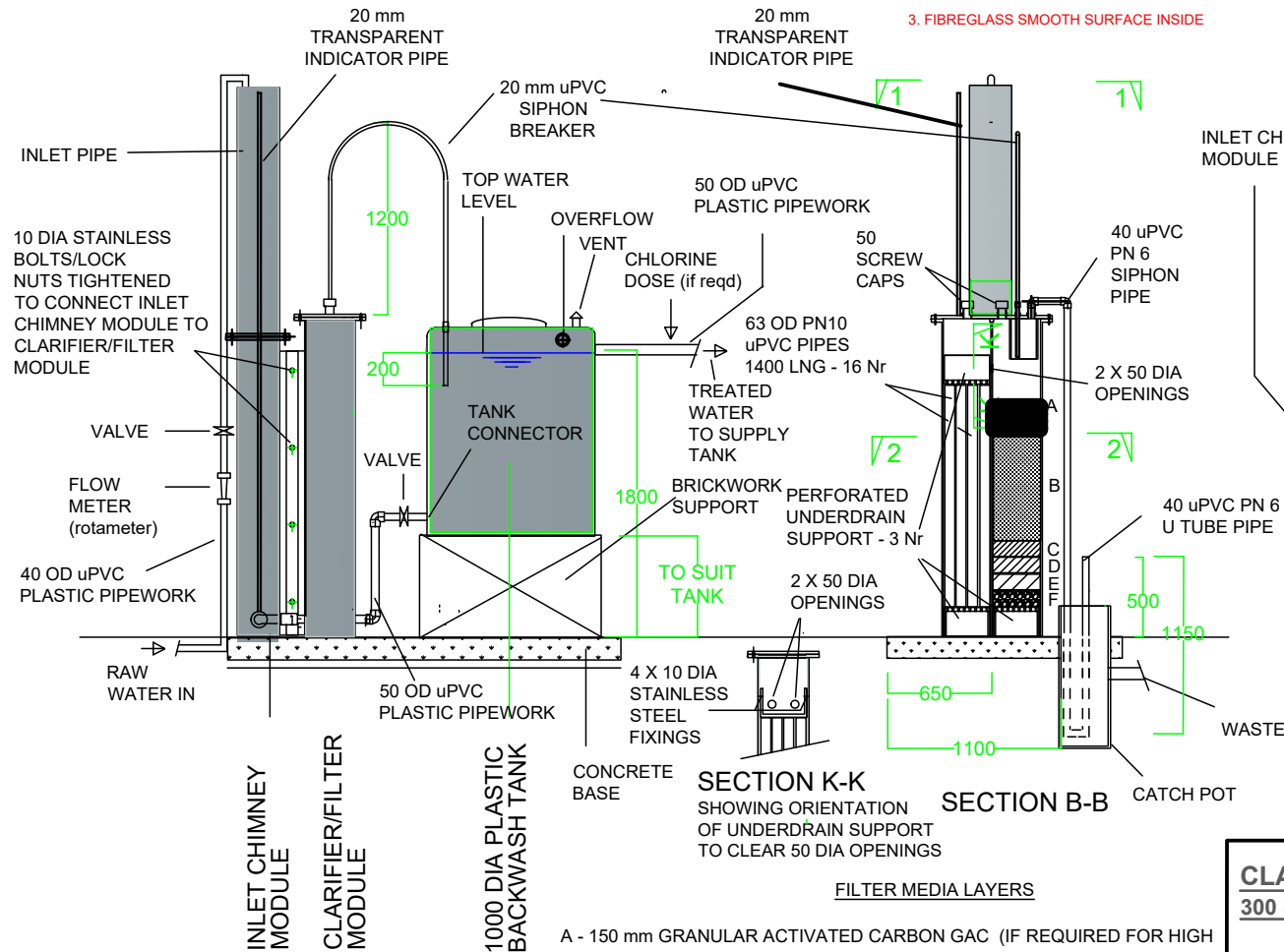


Treated water produced using equipment defined on this drawing shall be subject to a regular sampling and testing regime which shall demonstrate it satisfies national standards for drinking water quality before it is used for potable consumption.

#### NOTES

1. ALL DIMENSIONS ARE IN MM.
2. MATERIALS OF MANUFACTURE SHALL BE SUITABLE FOR CONTACT WITH POTABLE WATER AND FOR EXTERNAL EXPOSURE TO THE SUN
3. FIBREGLASS SMOOTH SURFACE INSIDE



#### CLARIWASH SELF-WASHING FILTER 300 SQUARE CLARIFIER/ FILTER (MODULAR)

#### DRG 1 ASSEMBLED ARRANGEMENTS

REVISION 2 - Nov 25