

# SPOON-FED ADDICTION

A Supernatural Horror Noir Feature  
by Silvano Williams

---

"Grief doesn't die. It spreads."

All character portraits are AI-generated concept art for visual development only.  
The script is a direct adaptation of the novella written by Silvano Williams.



# Logline

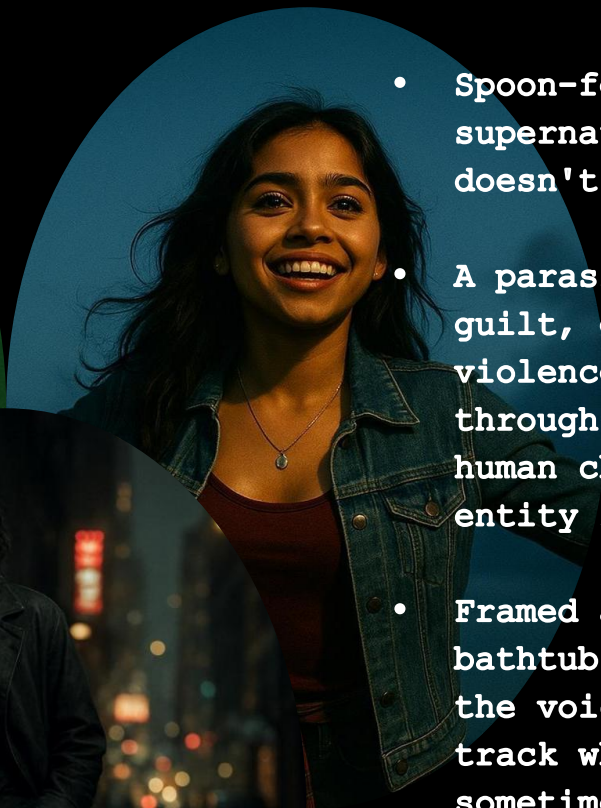
---

Feature, 116 pages

Fueled by LSD and grief, a drug dealer unleashes a violent revenge spree—only to realize he isn't the avenger but the carrier of a parasitic shadow; his goodbye kiss unknowingly marks the sheriff's sheltered teenage daughter as its next host.

# The Vision

---



- Spoon-fed Addiction is a non-linear supernatural noir about grief that doesn't die with its host—it spreads.
- A parasitic darkness feeds on Adiran's guilt, grows through a night of violence, and transfers to Angela through a single manipulated kiss. The human characters are carriers. The entity is what survives.
- Framed as two testimonies—Adiran's bathtub confession and Angela's diary—the voiceover runs like a confession track while the images deepen and sometimes contradict his account.
- Built as a four-act psychological collapse (not a three-act redemption), it tracks a contagion moving from one broken host to the next. Adapted from Silvano Williams' novella of the same name.



# SETPIECES / SIGNATURE SEQUENCES

- A gasoline trail races across a lawn—then the entire house erupts into a furious fireball, debris raining down as a shadowed silhouette flickers in the blaze.
- A highway stop becomes a nightmare: sirens, spotlight, and a split-second decision that turns the road into a kill zone.
- Scottie is dragged into the dark and left on train tracks—headlights bloom, steel screams, and the shadows swallow him before impact.
- Mary's murder is hallucinated in real-time on the windshield glass—a loop of trauma obscuring the road ahead.
- A blood-filled bathtub confession keeps cutting back in—steam, police radio, and the sense that something is forming in the room with him.
- Sterling forces Adiran under the bathwater—sound collapses, shadows coil, and Veronica surfaces with one word: "Breathe".

Production footprint: Houston streets/highways + residential interiors; signature practical house fire + train-track sequence (selective effects). Character-driven, POV-forward.

# Narrative Design – 4 Acts

---

A 4-act structure built around Adiran's psyche:

1. THE WOUND – The originating trauma.
2. THE FALL – The slow burn gives way to violence.
3. THE VOID – Delusion and collapse.
4. THE INFECTION – Pain passed on to Angela (and, implicitly, to us).



# Core Story – Myth Replacing Memory

---

The narrative tracks two connected lives.

## Angela

- Introspective girl in a strict, fractured home.
- Encounters Adiran at the edge of collapse and filters him through a fairy-tale lens—the beast who can be saved.
- Never witnesses the violence directly; she reconstructs it through fragments, fear, and imagination.
- Functions as the in-world “audience” for his confession.

## Adiran

- A dealer rotting in guilt over Veronica’s death.
- After Mary is killed, he and Seth spiral into a night of violence under the shadows’ influence.
- Bleeding out, he narrates the story he built around his grief—one that tragically pulls Angela into his worldview.



# The Catalysts for the Collapse

---



Veronica

*The Original Wound*

- Adiran's first love.
- Accidental, drug-fueled rooftop fall.
- Defines his guilt and self-image.



Mary

*The Trigger*

- Calm, commanding, spiritually grounded.
- Her murder triggers the surrender to the shadows.



Seth

*The Last Line*

- Loyal best friend and partner in the collapse.
- Dies in the final shootout, leaving Adiran completely alone.



# Angela – The “Dangerous Void”



- Angela embodies fairy-tale logic colliding with real darkness.
- Raised in a strict, hypocritical home under an authoritarian father.
- She meets Adiran at the edge of collapse. He tells her God wants him dead, that he's going to Hell-and she steps closer, not away.
- The Beauty and the Beast poster isn't decoration; it's her framework. She believes love transforms.
- In her diary, she builds a version of him where she's Belle, and he's the beast waiting to be saved.
- Her final entry becomes the transfer point—his damage crossing into her life, not through ignorance, but through devotion.

## THE CONTAGION SPREADS

- The contagion crosses into the “law.” As Sterling drowns Adiran, the shadows climb Sterling's arm—showing the darkness can take anyone once grief makes an opening.



A man with dark hair is lying in a bathtub, his eyes closed. A woman's face is visible in the water next to him. The scene is dimly lit, with a greenish tint. The bathtub is white and the tiles around it are dark.

## Adiran – Tragic Engine, Not Hero

---

Adiran drives the story, but is not meant to be admired.

- Hollowed by guilt; misreads his own trauma and uses it to justify more harm.
- The film is framed as his one-sided conversation from the tub—his last performance.
- The audience is pulled into his logic, riding his confession the way Angela does.
- He is not a romantic antihero; his influence corrodes everyone around him.

# Title Meaning – Spoon-fed Addiction

---

## The Victim's Addiction:

- A generation "spoon-fed" comfort and protection.
- Angela meets real darkness with fairy-tale logic—believing love can transform the beast.
- She isn't defenseless. She makes a tragic choice.

## The Viewer's Addiction:

- Our habit of romanticizing the "tortured soul."
- Like Angela, we consume Adiran's story as truth—even as the images complicate it.



# Visual Language & Tone

---

Supernatural horror grounded in psychological realism.

The shadows aren't metaphors—they're a force of nature, the physical weight of trauma that waits for grief to crack someone open. They spread like contagion, hollowing their hosts until there's nothing left to take.

## Motifs:

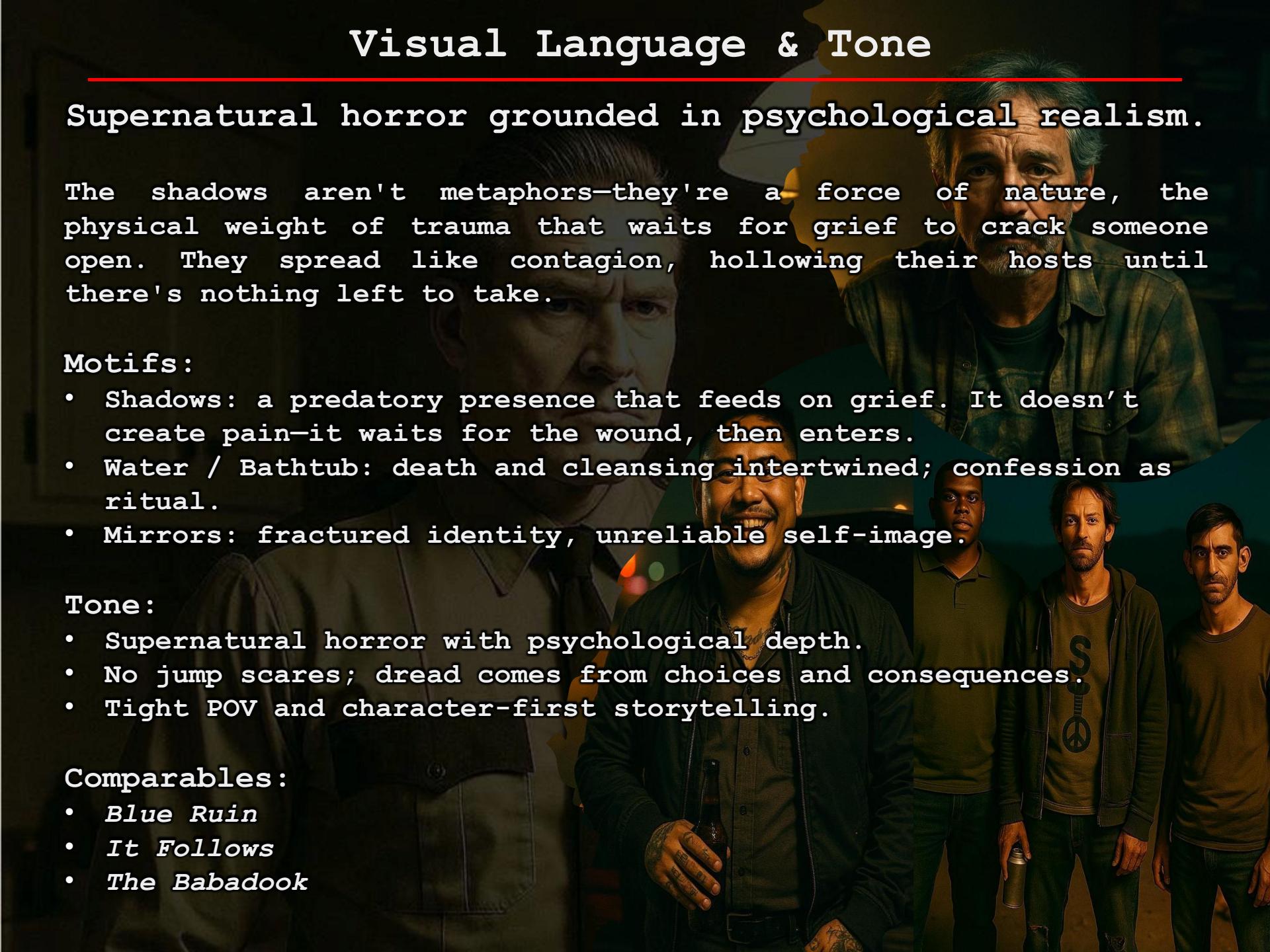
- Shadows: a predatory presence that feeds on grief. It doesn't create pain—it waits for the wound, then enters.
- Water / Bathtub: death and cleansing intertwined; confession as ritual.
- Mirrors: fractured identity, unreliable self-image.

## Tone:

- Supernatural horror with psychological depth.
- No jump scares; dread comes from choices and consequences.
- Tight POV and character-first storytelling.

## Comparables:

- *Blue Ruin*
- *It Follows*
- *The Babadook*





# Author & Authenticity

## Writer's note:

"I'm a Puerto Rican-born writer shaped by Houston's Alief in the '90s. Spoon-fed Addiction draws from places and people I knew firsthand—unfiltered, specific, and human.

The film doesn't sanitize darkness or glamorize it. It's about grief as contagion—how damage gets retold, reshaped, and passed on."

— Silvano Williams



## Contact:

- Email: [silvano@silvanowilliams.com](mailto:silvano@silvanowilliams.com)
- Web: [www.silvanowilliams.com](http://www.silvanowilliams.com)



All character portraits are AI-generated concept art for visual development only.  
The script is a direct adaptation of the novella written by Silvano Williams.