

CASE STUDY

Modern Motorized Shade System Blends State-of-the-Art Technology with Ultra-low energy consumption in Stunning Desert Luxury Oasis



CEDIA
MEMBER

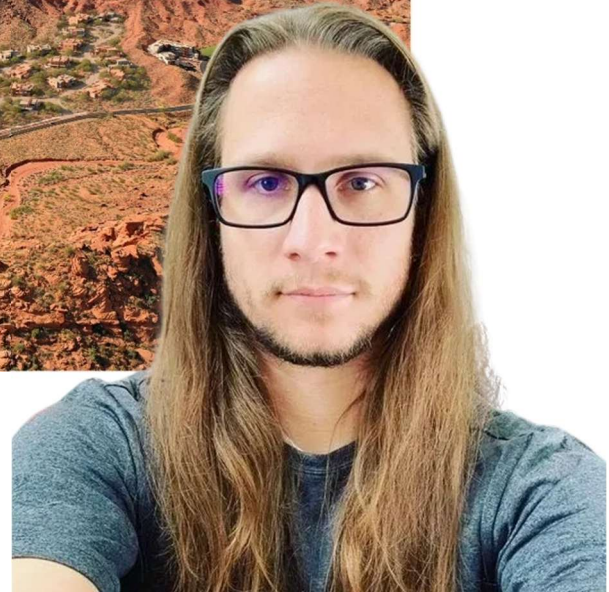


www.ModernAtomix.com



INTRODUCTION

Padre Canyon is a place where a unique shade of red makes the sky look brilliantly blue. Open, untouched spaces beckon us to live fully and appreciate the things that lead us there. Nestled among countless natural wonders, it could only be here that we find the Ultra Luxury development at Padre Canyon by Sentierre.



CHALLENGES

Nicholas Klafke, owner of Desert Sun Technology was tasked with matching the natural beauty of the site with the state-of-the-art gear and keeping it invisible. Nicholas reached out to Jason Felix of Performance Plus Marketing to partner on procuring the best of breed in lighting, shades and controls. With Loxone controls in place for lighting and automation, Draper at Home shades powered by Modern Atomics Reaktor keeps sustainability and saving energy as a high priority.

LOXONE

DRAPER[®] AT HOME



One issue was the contractor who pulled the wire on the project had used a two-conductor cable to the windows. This is common for some basic RF shades, but the developers wanted more two-way controls which required more conductors. Enter Modern Atomics amazing shade codecs which when paired with the company's flagship Reaktor do the best of both. Two conductors, full two-way control, and save up to 99.75% of all quiescent current typically drawn from motorized shades.

Reaktor can save the typical Shade project more than 412KWh annually.



www.ModernAtomics.com





After the shades are fully installed and the fascias have been applied you would not know about a wiring issue.



RESULTS:

“Beautiful! Reaktor is simply a better solution for powering motorized shades. Nothing else even comes close!” – Nicholas Klafke



Reaktor has been securely placed inside a wall-mounted EIA Enclosure using an optional Long Rack Ear and have been fully supported by both front and rear rack ears.

A shielded Keystone RJ45 is connected to the included passive PoE injector.

The motors are connected via Modern Atomics Shade Codecs which encode and decode the converted 2 conductor wiring to the 5 position 485 ports on the rear of the unit.



MADE
IN USA

www.ModernAtomics.com

+1 (844)-771-8725 TOLLFREE 24/7/365 LIVE SUPPORT

