

# Reaktor™ DC-22 PDU

# RF / RS-485

## Product Overview:



Reaktor™ is a Patent-pending Plenum-rated Rack Mount, Din-Rail-Mount, or Wall-Mount low-voltage Power Distribution Unit for Somfy® SDN® motors & 485 six-port data hub with 22 motor ports and 2 non-powered BUS IN and BUS OUT ports for extending the 485-bus line to other PDUs, data hubs, or control system processors.

Reaktor™ can work with any Somfy® SDN® 24VDC low voltage or line voltage motor.

A built-in Ammeter can show the amount of quiescent current and max current draw from all motors.

## Technical Specifications:

- Input: 24 ~ 48 VDC, .5A (BUS IN RJ45)
- 14 Rear Motor Outputs; 24 VDC (8Nm)
- 8 Front Motor Outputs: 24 VDC (1Nm)
- 6 Device ports: 24VDC (RJ45)
- Material: Powder coated steel enclosure
- Dimensions: (1.75 in. H) x (8.51 in. W) x (10.5 in. D)  
(44.5mm H) x (215.9mm W) x (254mm D)
- Maximum Wiring Distance
  - Rear motor ports: Up to 100m per motor port.  
2, 4 or 5 position wire with 12AWG for power
  - Front PDU ports: Up to 50m per motor port.  
UTP with minimum 23AWG
  - Front device ports: Up to 50m per device port
- Operating Temperature Range: 0~70°C (> 40°C de-rating)
- Shipping Weight: 8.5 lbs. [3.87kg]
- Indoor use only

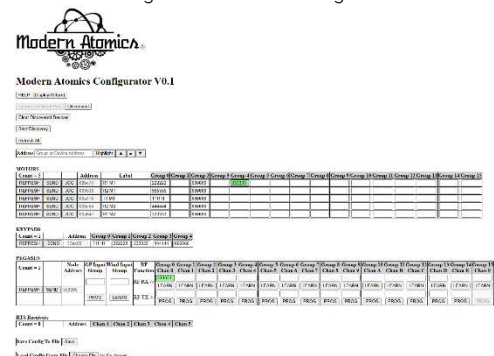
## Features summary:

- Enables power for 22 ports
- Built-in 6-port 485 Data Hub
- Works with All Somfy® SDN® Motors
- Certified IEC 62368-1 & CB 60950-1
- Meets USA EISA 2007
- Meets Energy Efficiency DOE Level VI
- Meets Code of Conduct Version 5 Tier 2
- Over Current Protection
- Over Temperature Protection
- EN61000-4-2: Air discharge: ±15KV, contact discharge: ±8KV meet criterion A
- EN61000-4-3: 80~1000MHz,3V.m,80%AM(1kHz),meet criterion A
- EN61000-4-4: Impulse: ± 1kV applied to L,N,meet criterion A
- EN61000-4-5: ± 1kV applied differential mode,meet criterion A
- RS-232 port for integration with Bond via Optional FLEX IP
- Can auto program keypads and RF remotes and make groups
- Can also set Limits on a single Somfy® SDN® motor in case no limit tool is onsite.
- Includes a FREE Limitator LM-1 Limit Setting tool and works with the Modern Atomics Configuration motor configuration software



## PDU Options:

- Optional Ammeter gauge orientation 12, 3, 6 or 9 o'clock
- Optional Wall-Mounted 16'x12'x4" enclosure with Lid
- Optional 5.08pitch screw down removable Terminal blocks
- Optional PDU vertical and horizontal joining



CEDIA MEMBER

©2025 MODERN ATOMICS LLC | #340843 JUNE 2026

All brands, products, and trademarks are the property of their respective owners

[www.ModernAtoms.com](http://www.ModernAtoms.com)

23438 Texas Highway 35, Palacios,  
Texas 77465, United States

+1 (844) 771-8725

# Reaktor™ DC-22 PDU

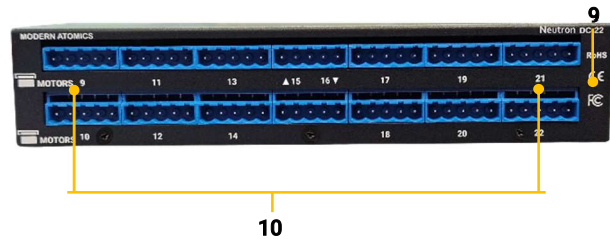
# RF / RS-485

## Connections & Indicators:

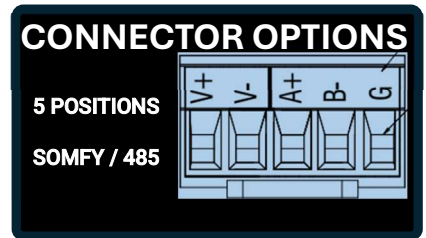
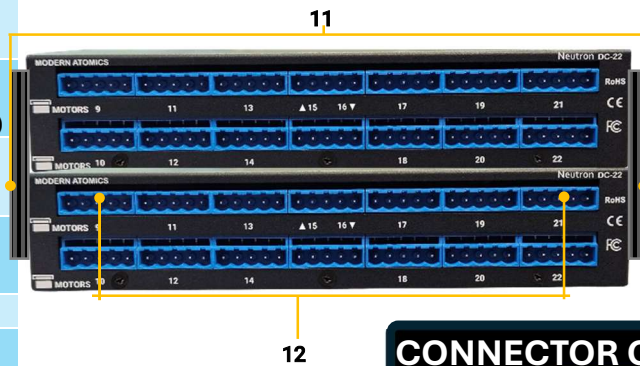
ELEMENT	DESCRIPTION
1	<b>Ammeter</b> Indicates current Amperage Output from [0~22] A @ 24VDC
2	<b>DEVICE PORTS</b> 6-485 Devices-Keypads/RF RCVERS
3	<b>485 BUS IN PORT</b> DC INPUT / System expansion & 3 <sup>rd</sup> Party Control Processor Port
4	<b>FRONT 485 MOTOR PORTS</b> 8-485 Motor Ports (2Nm max)
5	<b>Meter Calibration</b> Voltage Meter Calibration Control adjust with flathead screwdriver
6	<b>RESET SWITCH</b> Press to test or perform warm restart and Hold to Hibernate
7	<b>ESM STATUS</b> GREEN=Charged, Amber=Need Charge
8	<b>485 BUS OUT PORT</b> Non-powered / System expansion & 3 <sup>rd</sup> Party Control Processor Port
9	<b>NFPA Plenum Rated Enclosure</b> Can be mounted inside Air-Return spaces when using Plenum rated motor and data cables (Not included)
10	<b>5.08 PITCH TERMINAL BLOCKS 5 Pos</b> 14 Removable screw-down Motor Port Terminal Blocks for up to 12AWG wire & upto 100m(8Nm max)
11	<b>NFPA Plenum Rated Enclosure</b> Can be mounted inside Air-Return spaces when using Plenum rated motor and data cables (Not included)
12	<b>5.08 PITCH TERMINAL BLOCKS 5 Pos</b> 28 Removable screw-down Motor Port Terminal Blocks for up to 12AWG wire & up to 100m 8Nm max
13	<b>TEST/PROG KEYS</b> Used to test motors and create groups and prog keypads and RF remotes
14	<b>ECO MODE</b> Turn on and off ECO mode



FRONT VIEW

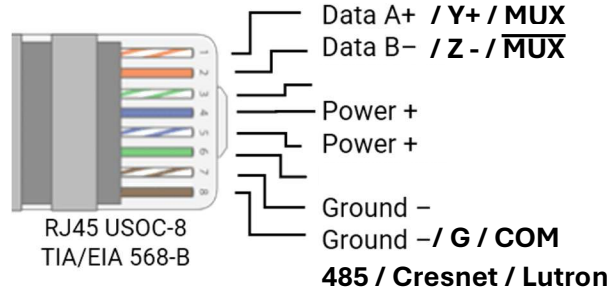
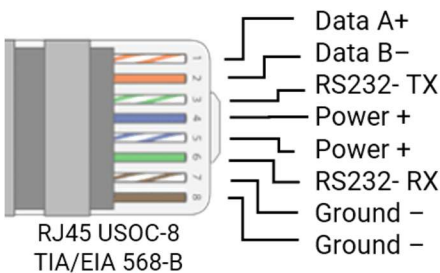


REAR VIEW



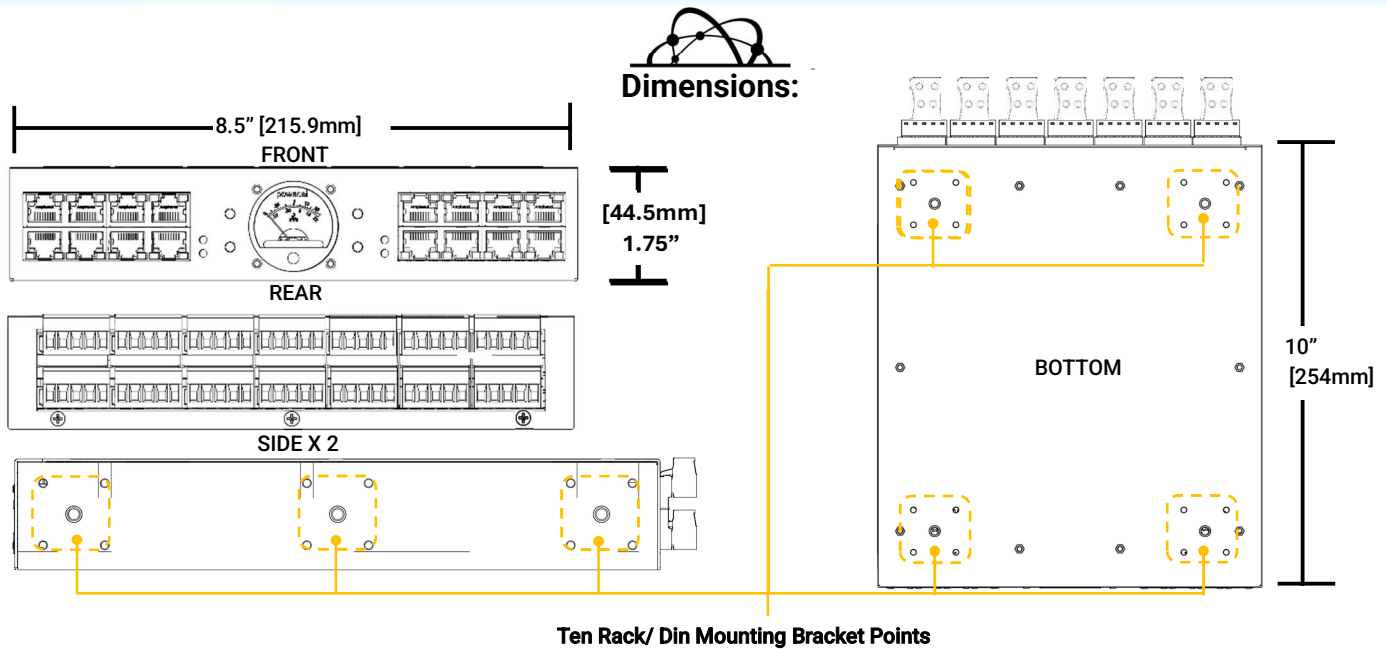
## Motor/Device Cable pinouts:

[ 2 ] BUS OUT - PORT      [ 3/7 ] BUS IN / MOTOR PORT



# Reaktor™ DC-22 PDU

# RF / RS-485



## Compatible Devices:

**485 DEVICES:**

- Any Somfy® SDN® MOTOR
- Any Somfy® RTS® Keypad or remote
- Any Somfy® SDN V2 device
- Any Bond® Remote or Bond Bridge Pro with Flex IP
- SI TRO.Y/2 Hub
- SI 16 port data hub
- SI PEGASUS Rf Transceiver
- Modern Atomics Tokamak
- Modern Atomics Limitator LM-1**

Horizontal stack may require optional din rail kit

LONG and MID Rack Ears and 1RU JOINER KITS NOT INCLUDED & sold separately

Reaktor is not a Lutron® or Crestron® approved power supply. Reaktor does not qualify as a Somfy® Power Distribution Device for the Somfy® UL Listing as a Shade Operator.

## Included in ALL Versions

- (1) PDU
- (14) 5.08 pitch Terminal Blocks
- (14) 3" Wire ties
- (1) Passive PoE Injector with AC Cable



Specifications are subject to change without notice



CEDIA MEMBER

©2025 MODERN ATOMICS LLC | #340843 JUNE 2026

All brands, products, and trademarks are the property of their respective owners

[www.ModernAtoms.com](http://www.ModernAtoms.com)

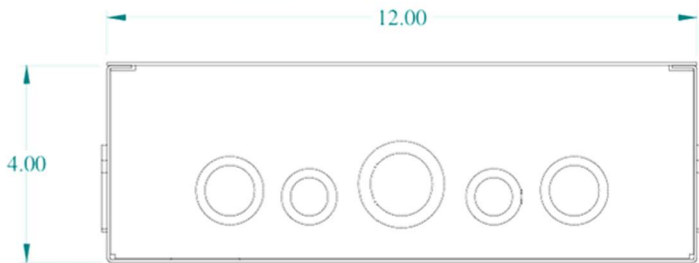
23438 Texas Highway 35, Palacios, Texas 77465, United States

+1 (844) 771-8725

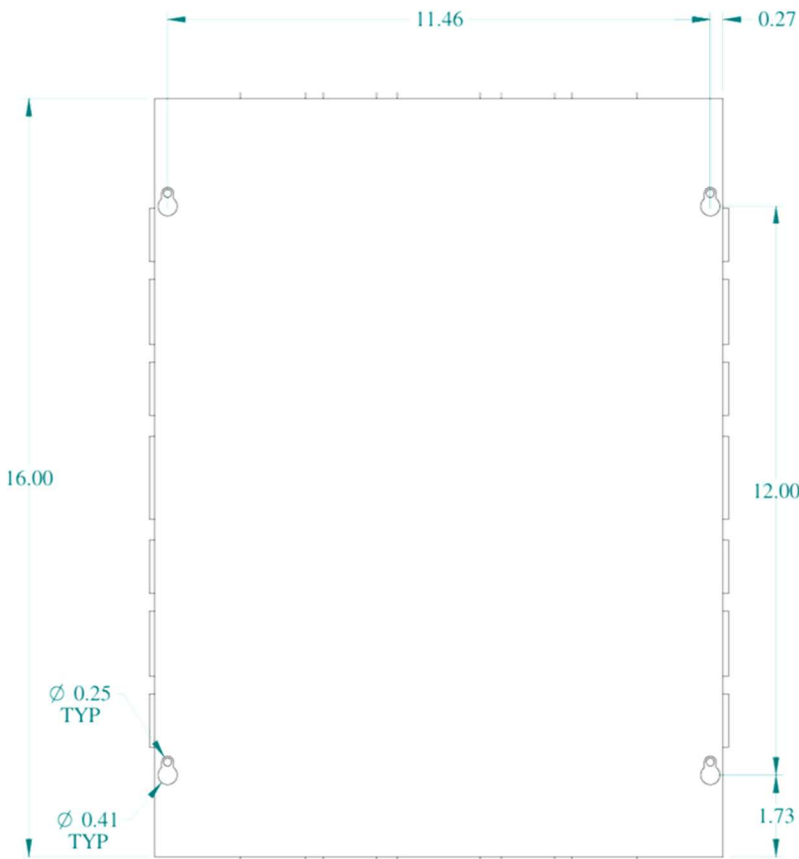
Reaktor™

RKT-DC-22

**Optional Enclosure Dimensions:**

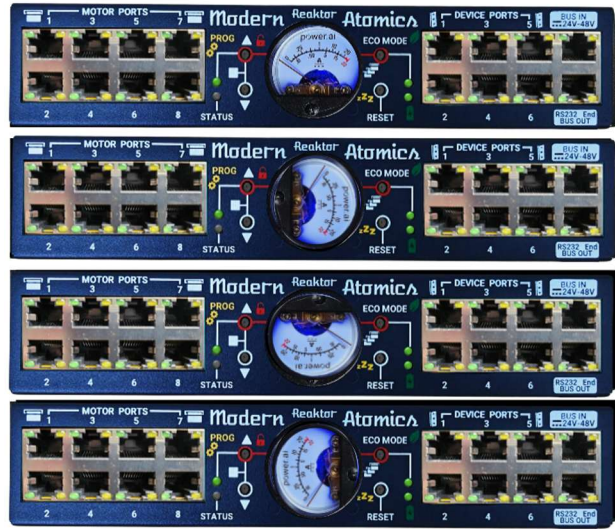


FRONT VIEW



TOP VIEW

**OPTIONAL GAUGE ORIENTATION:**



12 O'clock  
DEFAULT

3 O'clock  
OPTION

6 O'clock  
OPTION

9 O'clock  
OPTION

**MODEL SKU OPTIONS:**

PART NUMBER	MOTOR PORTS	TYPICAL MOTOR TYPE	TYPICAL BRANDS	VOLTAGE OPTIONS
RKT-DC-22	22	485	Somfy® SDN®	24



CEDIA MEMBER

©2025 MODERN ATOMICS LLC | #340843 JUNE 2026

All brands, products, and trademarks are the property of their respective owners

[www.ModernAtoms.com](http://www.ModernAtoms.com)

23438 Texas Highway 35, Palacios,  
Texas 77465, United States

+1 (844) 771-8725