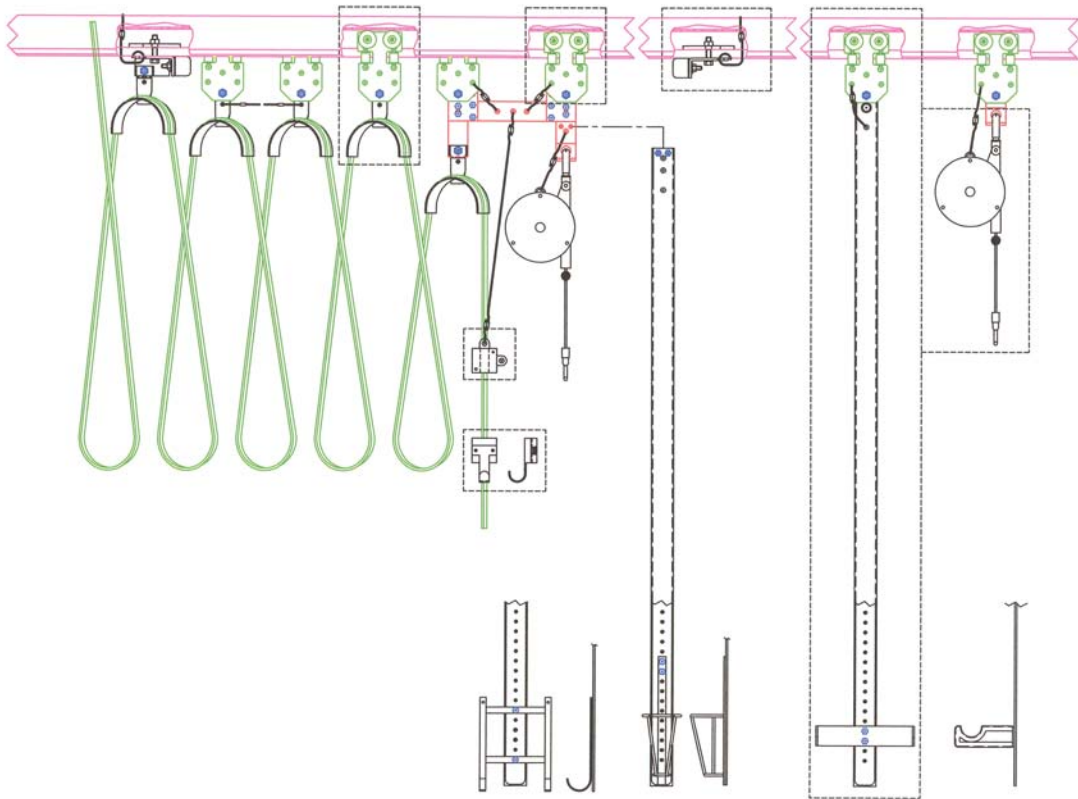




ACUMEN TECHNOLOGIES, INC.

Festoon Products Catalog

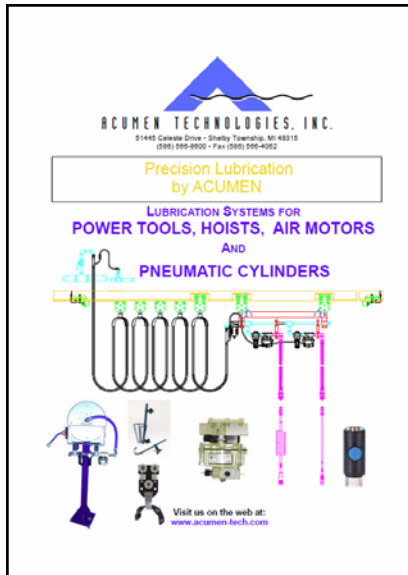


**51445 Celeste Drive
Shelby Twp., MI 48315
Phone: 586-566-8600
Fax: 586-566-4062**

All Acumen Festoon Products are designed to provide an orderly festooning of your electrical cable or air hose minimizing wear and tear. The combination of trolleys, saddles, clamps, tool hooks, rail stops and balancers provide a complete engineered system to elimi-

nate your festooning problems. If you don't see what you are looking for in the catalog please call or e-mail us, we may have a custom product to meet your needs.

See Our Catalogs For Other Acumen Products.



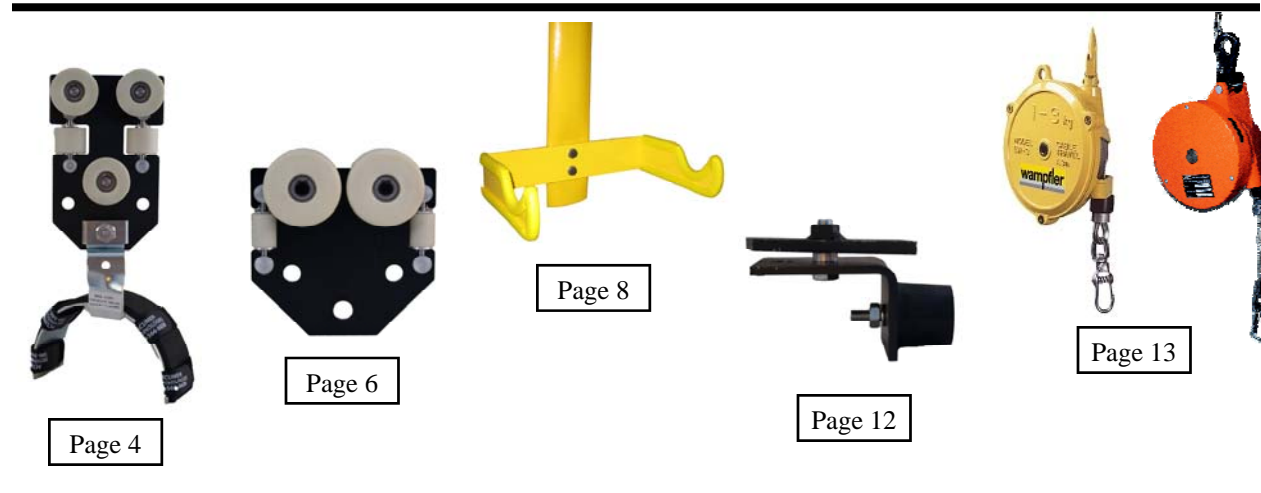
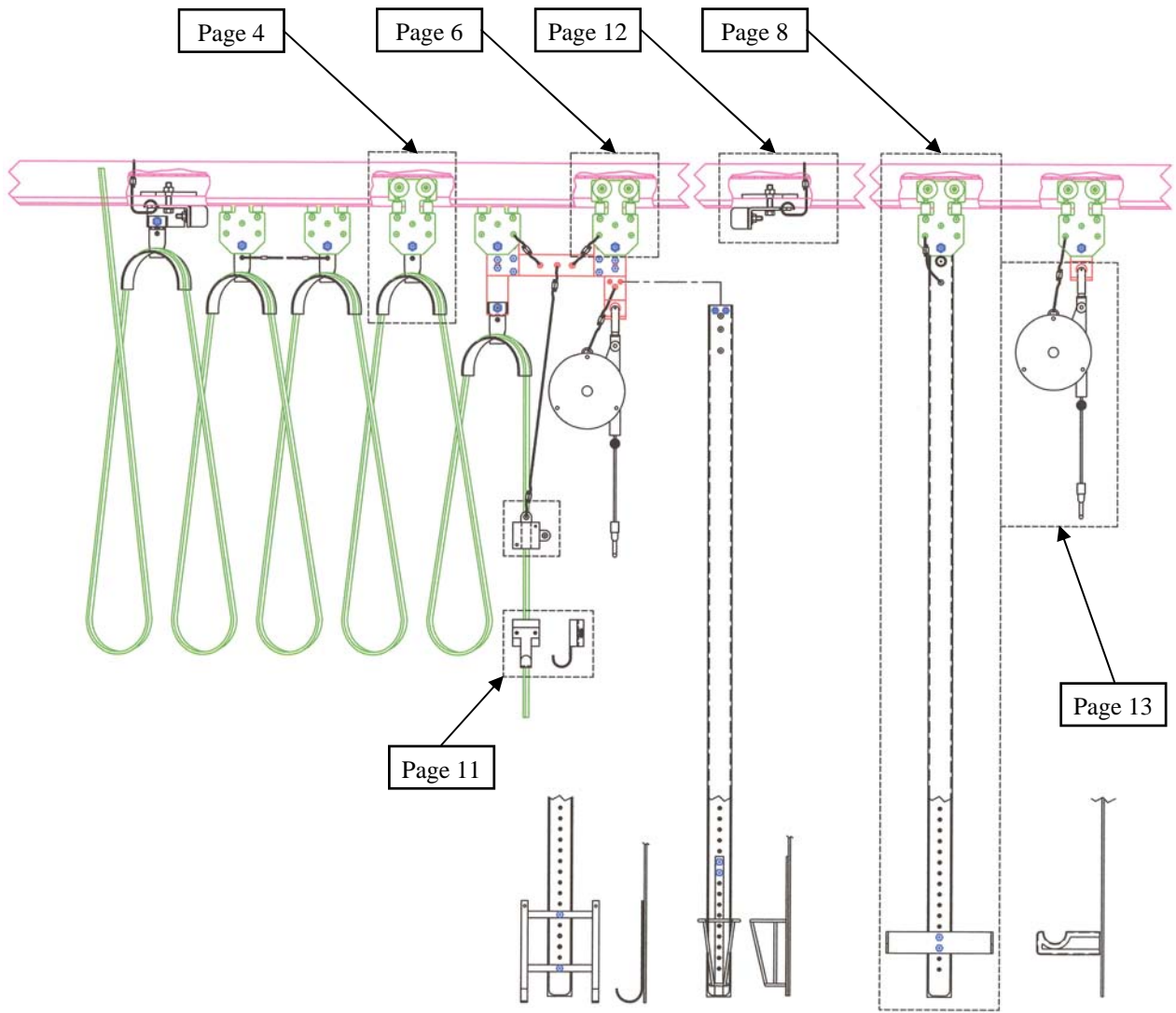
Lubrication Systems For Power Tools, Hoists, Air Motors & Pneumatic Cylinders



Lubrication Systems For Chains & Drilling Systems



Lubrication Systems For Spindle Bearings



FCT	E	V	6.25	B	A
------------	----------	----------	-------------	----------	----------

Festoon Cable Trolley

Saddle/Trolley Type

- A-Saddle with 1/2" Bolt, Nut & Spacer
- B-Saddle Only
- C-Saddle with 1/4" Snap Hook
- D-Saddle with 3/8" Snap hook
- E-Saddle & Trolley for Unified ETA4 Rail
- F-Saddle & Trolley for Unified ETA8 Rail
- G-Saddle & Trolley for Knight 4100 Rail
- H-Saddle & Trolley for Knight 4500-7500 Rail
- I-Saddle & Trolley for Knight 5300 Rail
- J-Saddle & Trolley for Knight 5500-5700 Rail
- K-Saddle & Trolley for Demag KBK I Rail
- L-Saddle & Trolley for Demag KBK II,III Rail
- M-Saddle & Trolley for Zimmerman ZRA1 Rail
- N-Saddle & Trolley for Zimmerman ZRA2 Rail
- O-Saddle & Trolley for 4" I Beam
- P-Saddle & Trolley for Demag KBK 100 Rail
- Q-Saddle & Trolley for Duct O Wire, Aluma-Track
- R-Saddle & Trolley for 3" I-Beam
- S-Saddle & Trolley for Zimmerman ZRAT Rail
- T-Saddle & Trolley for Unistrut Rail
- U-Saddle & Trolley for Klien 19.5mm Rail
- V-Saddle & Trolley for 3.25 Flange, Flat Rail
- W-Saddle & Trolley for 3.33 Flange, Flat Rail
(fits 0.438 and 0.688 thick flange)
- X-Saddle & Trolley for 6" I-Beam
- Y-Saddle & Trolley for ZRS2,ZRS3 Rail
- Z-Saddle & Trolley for Knight TR2000 Rail
- 01-Saddle & Trolley for Lode Rail 500lb
- 02-Saddel & Trolley for Gorbel GLC, GLM 500lb Rail
- 03-Saddle & Trolley for Hubbell WS50 & WA50 Rail
- 04-Saddle & Trolley for Wampfler C-Rail Track 40
- 05-Saddle & Trolley for Gorbel GLC, GLM 250lb Rail
- 06-Saddle & Trolley for Gorbel AL, ALM 150lb Rail
- 07-Saddle & Trolley for Gorbel AL, ALM 250/500lb
- 08-Saddle & Trolley for Gorbel AL, ALM1000lb Rail
- 09-Saddle & Trolley for Gorbel GLC, GLM 1000lb Rail
- 10-Saddle & Trolley for Gorbel GLC, GLM
2000/4000lb Rail
- 11-Saddle & Trolley for Hollywood Rail
- 12-Saddle & Trolley for Alfarail ARS200
- 13-Saddle & Trolley for Alfarail ARS500/ARS500H
- 14-Saddle & Trolley for CES 060260 Rail
- 15-Saddle & Trolley for 4" I-Beam, Dual Wheel
- 16-Saddle & Trolley for 3" I-Beam, Dual Wheel
- 17-Saddle & Trolley for 3.25 Flange, Flat Rail, Dual
- 18-Saddle & Trolley for 3.33 Flange, Flat Rail, Dual
- 19-Saddle & Trolley for 6" I-Beam, Dual Wheel

Hold Down

- V-Velcro
- B-Bolt Down

Saddle Diameter

2.00", 6.25", 12" (Inches)

Saddle Angle

- A-0 Degrees
- B-30 Degrees

Options

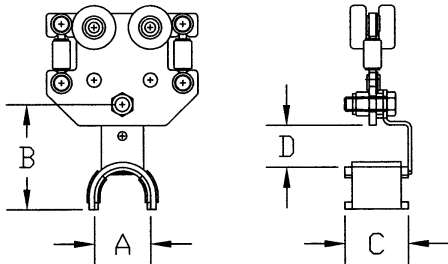
- No Options-Leave Blank
- A-Dual Trolley (optional on 12' saddle only)
- B-12" Stacker Saddle Only

Saddle/Trolley Type Continued

- 20-Saddle & Trolley for Hollywood Rail Dual Wheel
- 21-Saddle & Trolley for Hollywood Rail Quad Wheel
- 22-Saddle & Trolley for Knight HAD3000/3500 Dual
- 23-Saddle & Trolley for Knight HAD3000/3500 Quad
- 24-Saddle & Trolley for RA S0001
- 25-Saddle & Trolley for Zimmerman ZRAT Dual Wheel
- 26-Saddle & Trolley for Jomat 61000
- 27-Saddle & Trolley for Gorbel AL, ALM 2000/4000
- 28-Saddle & Trolley for Unified ETA-4 Short Body
- 29-Saddle & Trolley for Unified ETA-8 Short Body
- 30-Saddle & Trolley for Knight 4100 Short Body
- 31-Saddle & Trolley for Knight 7500 Short Body
- 32-Saddle & Trolley for Besta 66XX.XX Rail
- 33-Saddle & Trolley for ACCO Jr. Rail
- 34-Saddle & Trolley for 2.60 Steel Rail
- 35-Saddle & Trolley for Wampfler W5 Trax
- 36-Saddle & Trolley for W4-13 Flat Rail

The Acumen Festoon Cable Trolley is uniquely designed for flat or round electrical cable or hose. A large trolley selection is available to fit most manufacturer's tool rail. Our unique design helps to provide an orderly festooning of your electrical cables or air hose minimizing wear and tear. The saddles are positioned at a 30 degree angle to the tool rail which allows the hose or cable to store neatly in the home position and take up minimal space. The Velcro straps allow quick installation and adjustment without damaging the electrical cables.

2" Diameter Festoon Cable Trolley

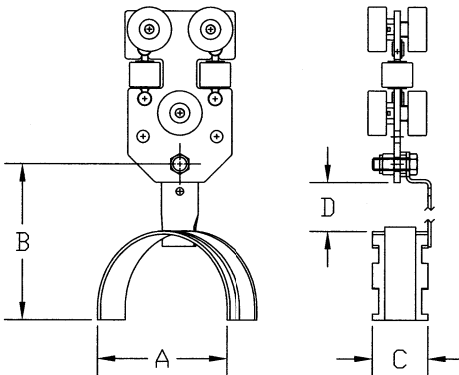


A-Diameter 2"
 B-Height 3.75"
 C-Width 2.25"
 D-Max. Cable Diameter 1.50"

Maximum Load Capacity: 50lbs



6.25" Diameter Festoon Cable Trolley

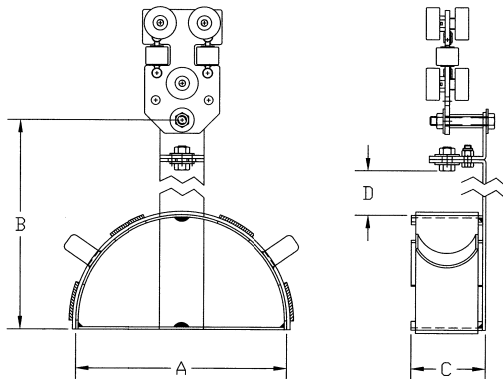


A-Diameter 6.25"
 B-Height 6.375"
 C-Width 2.25"
 D-Max. Cable Diameter 2.00"

Maximum Load Capacity: 100lbs



12" Diameter Festoon Cable Trolley



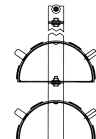
A-Diameter 12"
 B-Height 11.86"
 C-Width 4.00"
 D-Max. Cable Diameter 2.53"

Maximum Load Capacity:
 Single Trolley 100lbs
 Dual Trolley 200lbs



Saddle Shown 30 Degrees Out Of Position.
 Saddle Can Be Rotated And Locked Right Or Left 30 Degrees

Saddles Can Be Stacked To
 Handle Additional Cable Bundles



Festoon Trolley

Trolley Type

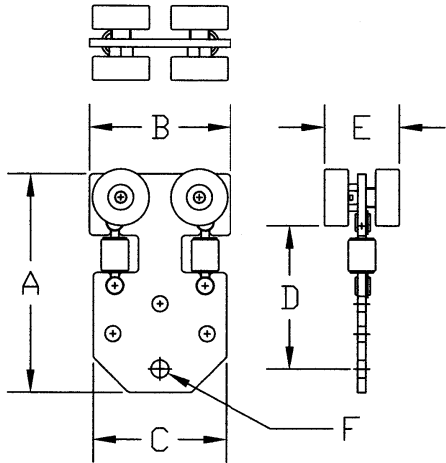
- E-Trolley for Unified ETA4 Rail
- F-Trolley for Unified ETA8 Rail
- G-Trolley for Knight 4100 Rail
- H-Trolley for Knight 4500-7500 Rail
- I-Trolley for Knight 5300 Rail
- J-Trolley for Knight 5500-5700 Rail
- K-Trolley for Demag KBK I Rail
- L-Trolley for Demag KBK II,III Rail
- M-Trolley for Zimmerman ZRA1 Rail
- N-Trolley for Zimmerman ZRA2 Rail
- O-Trolley for 4" I Beam
- P-Trolley for Demag KBK 100 Rail
- Q-Trolley for Duct-O-Wire, Aluma-Track
- R-Trolley for 3" I Beam
- S-Trolley for Zimmerman ZRAT Rail
- T-Trolley for Unistrut Rail
- U-Trolley for Klien 19.5mm Rail
- V-Trolley for 3.25 Flange, Flat Rail
- W-Trolley for 3.33 Flange, Flat Rail
(fits 0.438 and 0.688 thick flange)
- X-Trolley for 6" I-Beam
- Y-Trolley for ZRS2, ZRS3 Rail
- Z-Trolley for Knight TR2000 Rail
- 01-Trolley for Lode Rail 500lb
- 02-Trolley for Gorbel GLC, GLM 500lb Rail
- 03-Trolley for Hubbell WS50 & WA50 Rail
- 04-Trolley for Wampfler C-Rail Track 40
- 05-Trolley for Gorbel GLC, GLM 250lb Rail
- 06-Trolley for Gorbel AL, ALM 150lb Rail
- 07-Trolley for Gorbel AL, ALM 250/500lb
- 08-Trolley for Gorbel AL, ALM 1000lb Rail
- 09-Trolley for Gorbel GLC, GLM 1000lb Rail
- 10-Trolley for Gorbel GLC, GLM
2000/4000lb Rail
- 11-Trolley for Hollywood Rail
- 12-Trolley for Alfarail ARS200
- 13-Trolley for Alfarail ARS500/ARS500H
- 14-Trolley for CES 860260 Rail
- 15-Trolley for 4" I-Beam, Dual Wheel
- 16-Trolley for 3" I-Beam, Dual Wheel
- 17-Trolley for 3.25 Flange, Flat Rail, Dual Wheel
- 18-Trolley for 3.33 Flange, Flat Rail, Dual Wheel
- 19-Trolley for 6" I-Beam, Dual Wheel

Options

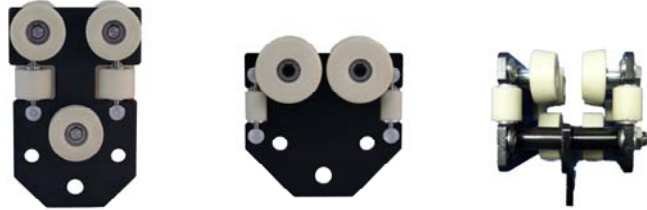
- No Option**-Leave Blank
- A-Trolley with 1/4" Snap Hook
- B-Trolley 3/8" Snap hook
- C-Trolley with 1/2" Bolt & Nut
- D-Trolley with attachment for
Tool Bar

Trolley Type Continued

- 20-Trolley for Hollywood Rail Dual Wheel
- 21-Trolley for Hollywood Rail Quad Wheel
- 22-Trolley for Knight HAD3000/3500 Dual
- 23-Trolley for Knight HAD3000/3500 Quad
- 24-Trolley for RA S0001
- 25-Trolley for Zimmerman ZRAT Dual Wheel
- 26-Trolley for Jomat 61000
- 27-Trolley for Gorbel AL, ALM 2000/4000
- 28-Trolley for Unified ETA-4 Short Body
- 29-Trolley for Unified ETA-8 Short Body
- 30-Trolley for Knight 4100 Short Body
- 31-Trolley for Knight 7500 Short Body
- 32-Trolley for Besta 66XX.XX Rail
- 33-Trolley for ACCO Jr. Rail
- 34-Trolley for Rail
- 35-Trolley for Wampfler W5 Trax
- 36-Trolley for W4-13 Flat Rail

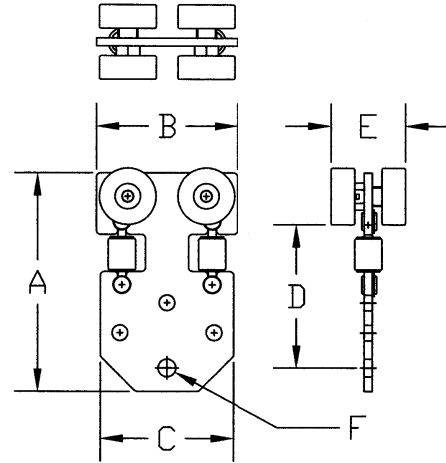
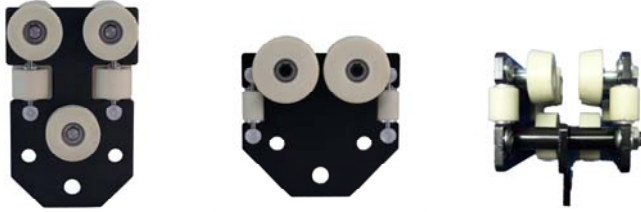


The Acumen Festoon Trolley is uniquely designed with side rollers and anti-kick up wheels to prevent the trolley from locking in the rail. Not all festooning applications apply the load directly below the trolley. Even when a side load is applied the trolley will move smoothly in the rail.



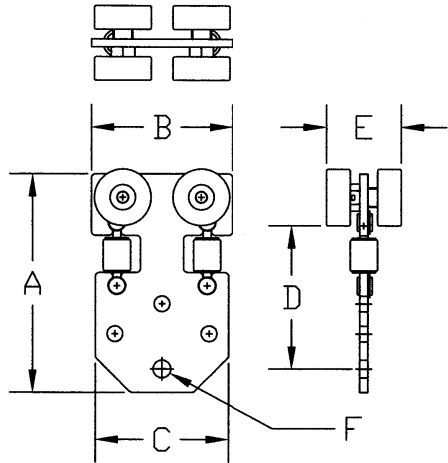
Part Number	Max. Load (lbs)	A	B	C	D	E	F	Wt.
FTE	200	7	4.5	4.25	4.59	2.38	Ø .56	
FTF	200	7	4.5	4.25	4.59	2.75	Ø .56	
FTG	200	7	4.5	4.25	4.59	2.38	Ø .56	
FTH	200	7	4.5	4.25	4.59	2.75	Ø .56	
FTI	200	5	5.38	5.38	2.56	1.71	Ø .56	
FTJ	200	7	4.5	4.25	4.38	2.64	Ø .56	
FTK	200	5	5.38	5.38	2.56	1.71	Ø .56	
FTL	200	7	4.5	4.25	4.38	2.64	Ø .56	
FTM	200	5	5.38	5.38	2.56	1.71	Ø .56	
FTN	200	7	4.5	4.25	4.38	2.64	Ø .56	
FTO	200	5.1	5.75	5.75	2.79	2.50	Ø .56	
FTP	200	5	5.38	5.38	2.91	1.58	Ø .56	
FTQ	200	-	-	-	-	-	Ø .56	
FTR	200	5.1	5.75	5.75	2.73	2.25	Ø .56	
FTS	200	5	5.38	5.38	2.91	1.58	Ø .56	
FTT	200	4	5.38	5.38	2.19	1.25	Ø .56	
FTU	200	-	-	-	-	-	Ø .56	
FTV	200	-	-	-	-	-	Ø .56	
FTW	200	5.6	5.75	5.75	3.41	3.25	Ø .56	
FTX	200	-	-	-	-	-	Ø .56	
FTY	200	7	4.5	4.25	4.38	2.64	Ø .56	
FTZ	200	4	5.38	5.38	2.16	1.58	Ø .56	
FT01	200	4	5.38	5.38	1.98	1.58	Ø .56	
FT02	200	4	5.38	5.38	1.98	1.58	Ø .56	
FT03	200	4	5.38	5.38	2.10	1.19	Ø .56	
FT04	200	4	5.38	5.38	2.10	1.19	Ø .56	

The Acumen Festoon Trolley is uniquely designed with side rollers and anti-kick up wheels to prevent the trolley from locking in the rail. Not all festooning applications apply the load directly below the trolley. Even when a side load is applied the trolley will move smoothly in the rail.

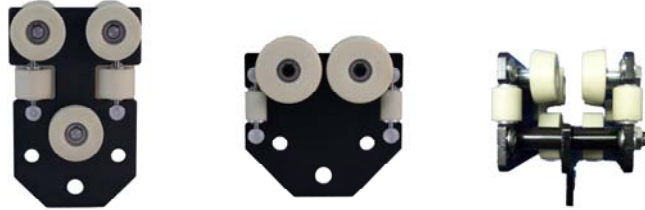


Part Number	Max. Load (lbs)	A	B	C	D	E	F	Wt.
FT05	200	4	5.38	5.38	2.10	1.35	Ø .56	
FT06	200	4	5.38	5.38	-	-	Ø .56	
FT07	200	4	5.38	5.38	1.77	1.71	Ø .56	
FT08	200	6	7.50	7.50	3.13	2.64	Ø .56	
FT09	200	6	7.50	7.50	3.13	2.64	Ø .56	
FT10	200	6.3	7.50	7.50	3.13	2.64	Ø .56	
FT11	200		-	-	-	-	Ø .56	
FT12	200	4	5.38	5.38	2.12	1.58	Ø .56	
FT13	200	4	5.38	5.38	1.84	2.38	Ø .56	
FT14	200	7	4.50	4.25	4.38	2.64	Ø .56	
FT15	100	6	5.00	3.75	3.59	2.50	Ø .56	
FT16	100	6	5.00	3.75	3.59	2.25	Ø .56	
FT17	100	6.5	5.00	3.75	4.09	3.09	Ø .56	
FT18	100	6.5	5.00	3.75	4.09	3.17	Ø .56	
FT19	100	6	5	3.75	3.59	3.17	Ø .56	
FT20	-	-	-	-	-	-	Ø .56	
FT21	-	-	-	-	-	-	Ø .56	
FT22	-	-	-	-	-	-	Ø .56	
FT23	-	-	-	-	-	-	Ø .56	
FT24	-	-	-	-	-	-	Ø .56	
FT25							Ø .56	
FT26							Ø .56	
FT27							Ø .56	
FT28							Ø .56	
FT29							Ø .56	
FT30							Ø .56	

Festoon Trolley



The Acumen Festoon Trolley is uniquely designed with side rollers and anti-kick up wheels to prevent the trolley from locking in the rail . Not all festooning applications apply the load directly below the trolley. Even when a side load is applied the trolley will move smoothly in the rail.



Part Number	Max. Load (lbs)	A	B	C	D	E	F	Wt.
FT31	200	7	4.5	4.25	4.59	2.38	Ø .56	
FT32	50	3.5	6.5	5.25	3.31	2.78	Ø .56	
FT33								
FT34								
FT35								
FT36								

TSB	A	72	A		
------------	----------	-----------	----------	--	--

Tool Support Bar

Trolley Type

- A-Bar Only with 1/2" Bolt, Nut & Spacer
- B-Bar Only, 9/16" Mounting Hole
- C-Bar Only with Holes for Universal Steel
- D-Bar Only with Special Mounting, See "S" Numbers *
- E-Bar & Trolley for Unified ETA4 Rail
- F-Bar & Trolley for Unified ETA8 Rail
- G-Bar & Trolley for Knight 4100 Rail
- H-Bar & Trolley for Knight 4500-7500 Rail
- I-Bar & Trolley for Knight 5300 Rail
- J-Bar & Trolley for Knight 5500-5700 Rail
- K-Bar & Trolley for Demag KBK I Rail
- L-Bar & Trolley for Demag KBK II,III Rail
- M-Bar & Trolley for Zimmerman ZRA1 Rail
- N-Bar & Trolley for Zimmerman ZRA2 Rail
- O-Bar & Trolley for 4" I Beam
- P-Bar & Trolley for Demag KBK 100 Rail
- Q-Bar & Trolley for Duct O Wire, Aluma-Track
- R-Bar & Trolley for 3" I-Beam
- S-Bar & Trolley for Zimmerman ZRAT Rail
- T-Bar & Trolley for Unistrut Rail
- U-Bar & Trolley for Klien 19.5mm Rail
- V-Bar & Trolley for 3.25 Flange, Flat Rail
- W-Bar & Trolley for 3.33 Flange, Flat Rail
(fits 0.438 and 0.688 thick flange)
- X-Bar & Trolley for 6" I-Beam
- Y-Bar & Trolley for ZRS2,ZRS3 Rail
- Z-Bar & Trolley for Knight TR2000 Rail
- 01-Bar & Trolley for Lode Rail 500lb
- 02-Bar & Trolley for Gorbelt GLC, GLM 500lb Rail
- 03-Bar & Trolley for Hubbell WS50 & WA50 Rail
- 04-Bar & Trolley for Wampfler C-Rail Track 40
- 05-Bar & Trolley for Gorbelt GLC, GLM 250lb Rail
- 06-Bar & Trolley for Gorbelt AL, ALM 150lb Rail
- 07-Bar & Trolley for Gorbelt AL, ALM 250/500lb
- 08-Bar & Trolley for Gorbelt AL, ALM 1000lb Rail
- 09-Bar & Trolley for Gorbelt GLC, GLM 1000lb Rail
- 10-Bar & Trolley for Gorbelt GLC, GLM
2000/4000lb Rail
- 11-Bar & Trolley for Hollywood Rail
- 12-Bar & Trolley for Alfarail ARS200
- 13-Bar & Trolley for Alfarail ARS500/ARS500H
- 14-Bar & Trolley for CES 060260 Rail
- 15-NA
- 16-NA
- 17-NA
- 18-NA
- 19-NA

Bar Length Inches

Note: To determine bar length. Measure distance from bottom of the tool rail to the floor. Subtract trolley dimension D (Page 7). Subtract desired height off floor.

Tool Support Type

- A-6" Cage (TS-6C)
- B-8" Cage (TS-8C)
- C-Single "J" Hook (TS-1J)
- D-Double J, 10" Cradle for Right Angle Tools (TS-10J)

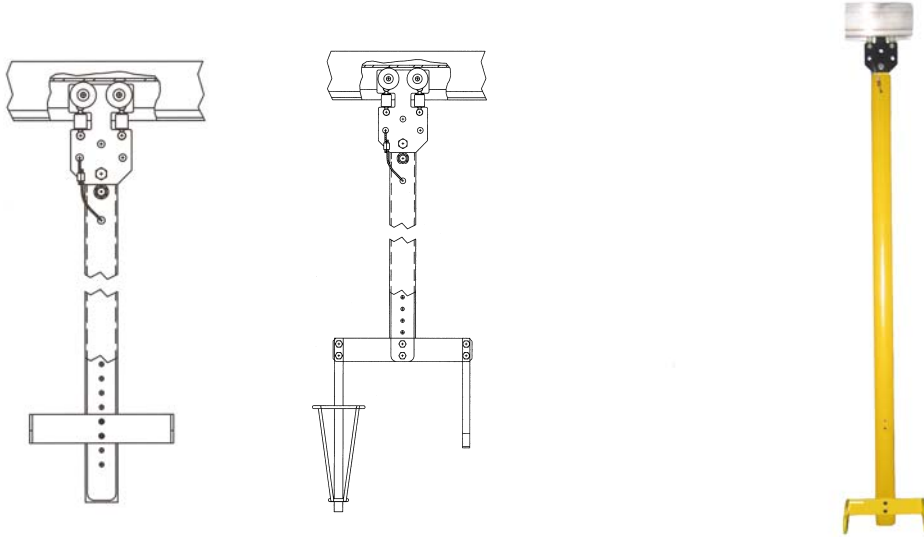
2nd Tool Support Type

3rd Tool Support Type

* Trolley Type D
Bar Only With Custom Mounting Holes
See Acumen "S" Numbers

Trolley Type Continued

- 20-NA
- 21-Bar & Trolley for Hollywood Rail Quad Wheel
- 22-NA
- 23-Bar & Trolley for Knight HAD3000/3500 Quad
- 24-Bar & Trolley for RA S0001
- 25-Saddle & Trolley for Zimmerman ZRAT Dual Wheel
- 26-Bar & Trolley for Jomat 61000
- 27-Bar & Trolley for Gorbelt AL, ALM 2000/4000
- 28-NA
- 29-NA
- 30-NA
- 31-NA
- 32-Bar & Trolley for Besta 66XX.XX Rail
- 33-Bar & Trolley for ACCO Jr. Rail
- 34-Bar & Trolley for 2.60 Steel Rail
- 35-Bar & Trolley for Wampfler W5 Trax
- 36-Bar & Trolley for W4-13 Flat Rail



A-6" Cage



B-8" Cage



C-Single "J" Hook



D-Double "J" 10" Wide

Cable Clamp Block

CCB	1	F	0.00 X 0.00
-----	---	---	-------------

Cable Clamp Block

Number Of Cable Slots

Type Of Cable

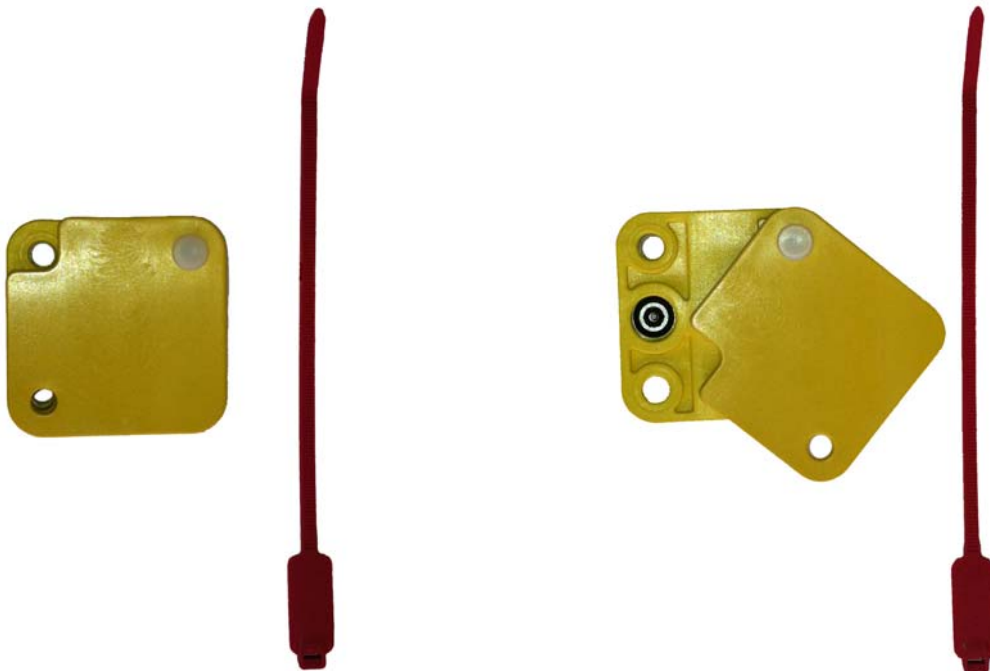
- F-Flat Cable
- R-Round Cable

Cable Dimension Or Diameter

Flat Cable = 0.00" X 0.00"
 Round Cable = 0.00

Common Cables:
 Atlas Copco Tensor Flat Cable = 0.32 X 0.70

Tamperproof Cover Swivels
 Up To Expose The Clamp Screws.
 Error Proofing Tag Hole Is Provided.



Cable Tool Support

CTS	F	0.00 X 0.00
-----	---	-------------

Cable Tool Support

Type Of Cable

- F-Flat Cable
- R-Round Cable

Cable Dimension Or Diameter

Flat Cable = 0.00" X 0.00"

Round Cable = 0.00"

Common Cables:

Atlas Copco Tensor ST Flat Cable = 0.32 X 0.70

Atlas Copco Tensor S Flat Cable=0.34 X 0.83



Cable Tool Support Attaches Directly To Flat or Round Cable

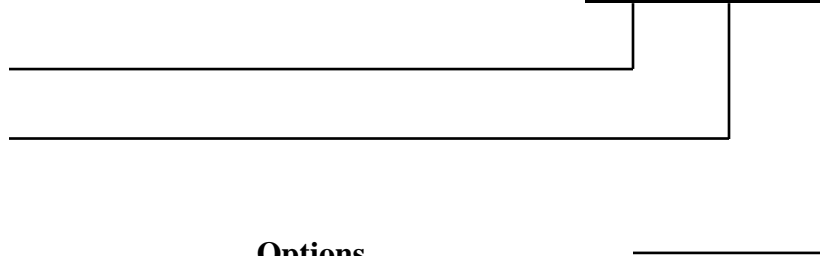
Mid Rail Stop

Rail Type

- E-Stop for Unified ETA4 Rail
- F-Stop for Unified ETA8 Rail
- G-Stop for Knight 4100 Rail
- H-Stop for Knight 4500-7500 Rail
- I-Stop for Knight 5300 Rail
- J-Stop for Knight 5500-5700 Rail
- K-Stop for Demag KBK I Rail
- L-Stop for Demag KBK II, IIL Rail
- M-Stop for Zimmerman ZRA1 Rail
- N-Stop for Zimmerman ZRA2 Rail
- O-Stop for 4" I Beam
- P-Stop for Demag KBK 100 Rail
- Q-Stop for Duct O Wire, Aluma-Track
- R-Stop for 3" I-Beam
- S-Stop for Zimmerman ZRAT Rail
- T-Stop for Unistrut Rail
- U-Stop for Klien 19.5mm Rail
- V-Stop for 3.25 Flange, Flat Rail
- W-Stop for 3.33 Flange, Flat Rail
(fits 0.438 and 0.688 thick flange)
- X-Stop for 6" I-Beam
- Y-Stop for ZRS2,ZRS3 Rail
- Z-Stop for Knight TR2000 Rail
- 01-Stop for Lode Rail 500lb
- 02-Stop for Gorbel GLC, GLM 500lb Rail
- 03-Stop for Hubbell WS50 & WA50 Rail
- 04-Stop for Wampfler C-Rail Track 40
- 05-Stop for Gorbel GLC, GLM 250lb Rail
- 06-Stop for Gorbel AL, ALM 150lb Rail
- 07-Stop for Gorbel AL, ALM 250/500lb
- 08-Stop for Gorbel AL, ALM1000lb Rail
- 09-Stop for Gorbel GLC, GLM 1000lb Rail
- 10-Stop for Gorbel GLC, GLM
2000/4000lb Rail
- 11-Stop for Hollywood Rail
- 12-Stop for Alfarail ARS200
- 13-Stop for Alfarail ARS500/ARS500H
- 14-Stop for CES 860260 Rail
- 15-NA
- 16-NA
- 17-NA
- 18-NA
- 19-NA



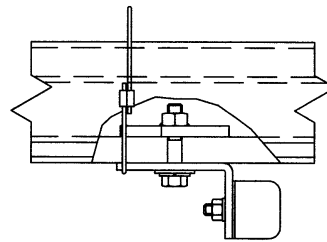
MRS	E	
-----	---	--



Options

- No Option-Leave Blank
- A-Orange Paint
- B-Tamperproof Bolt
- C-Stationary Saddle Flange

Note: All mid rail stops include safety cable.



Rail Type Continued

- 20-Stop for Hollywood Rail Dual Wheel
- 21-Stop for Hollywood Rail Quad Wheel
- 22-Stop for Knight HAD3000/3500 Dual
- 23-Stop for Knight HAD3000/3500 Quad
- 24-Stop for RA S0001
- 25-NA
- 26-Stop for Jomat 61000
- 27-Stop for Gorbel AL, ALM 2000/4000
- 28-NA
- 29-NA
- 30-NA
- 31-NA
- 32-Stop for Besta 66XX.XX Rail
- 33-Stop for ACCO Jr. Rail
- 34-Stop for 2.60 Steel Rail
- 35-Stop for Wampfler W5 Trax
- 36-Stop for W4-13 Flat Rail

Wampfler, Endo

- True Zero Gravity, with no drifting
- Tapered Drum, quality springs and bearings provide smooth travel.
- Tension Adjustment is easy and precise.
- EK-0 has casting made of high impact ABS plastic.
- EW series features cast aluminum case and forged swivel hook.

Model	Capacity lbs	Cable Travel	Dia. Of Cable	Weight lbs
EK-0	1.1-3.3	39.40"	3mm	1.10
EW-3	2.2-6.6	51.20"	3mm	3.10
EW-4	4.4-8.8	51.20"	3mm	3.20
EW-5	5.5-11.0	51.20"	3mm	3.30
EW-9	9.9-19.8	51.20"	4mm	7.50
EW-15	19.8-33.1	51.20"	4mm	8.40



Packers Kromer

Series 7228, Lightweight, Zero Gravity

- Locking Safety Hanger
- High Impact Housing
- Drum Lock Slot
- Steel Cable
- Quick Change Cable
- Safety Detent Models 3,4,5
- Stepless Tension Adjustment
- Safety Chain Installed
- Riveted Cold Rolled Spring
- Locking Safety Hook

Model	Capacity lbs	Cable Travel	Dia. Of Cable	Weight lbs
7228-1	.88-2.65	58.8"	3mm	3
7228-2	2.65-5.73	58.8"	3mm	3
7228-3	5.73-8.38	58.8"	3mm	3
7228-4	8.38-11.4	58.8"	3mm	3
7228-5	11.4-14.3	58.8"	3mm	3



Series 7230, Intermediate, Zero Gravity

- Floating Rotating Suspension
- High Impact Housing
- Recessed Safe Adjustments
- Safety Drum Lock
- Stepless Tension Adjustment
- Quick Change Cable
- Automatic Safety Detent
- Safety Chain Installed
- Riveted Cold Rolled Spring
- Optional Ratchet Lock (7231)

Model	Capacity lbs	Cable Travel	Dia. Of Cable	Weight lbs
7230-1	6.6-11	78"	3mm	8.5
7230-2	10.0-15	78"	3mm	8.5
7230-3	13.3-22	78"	3mm	8.5
7230-4	20.0-30	78"	3mm	8.5
7230-5	28.7-37	78"	3mm	8.5
7230-6	35.3-46.3	78"	3mm	8.5



Plastic Cable Saddles

FHP20133-16	Cable Clip, 10mm-16mm
FHP20133-25	Cable Clip, 17mm-25mm
FHP20133-36	Cable Clip, 26mm-36mm
FHP20133-50	Cable Clip, 37mm-50mm

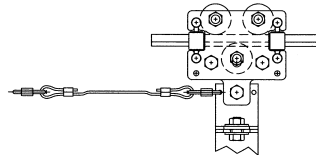


Trolley/Saddle Towing Cables

100 000062 00	1/8" 7X19 Steel Cable, Bulk
100 000063 00	Aluminum Oval Sleeve



Contact Acumen For Complete Cable Assemblies



Hooks

100 000744 00	1/4" Snap Hook
100 000054 00	3/8" Snap Hook
100 006289 00	1/4" Quick Link, Pear Shape



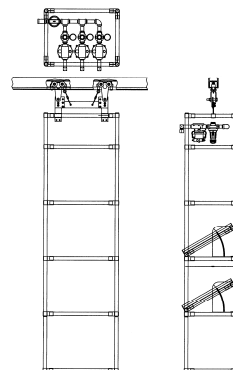
Miscellaneous

500 006365 00	Balancer Attachment Tab, 1" Diameter Balancer Hole, With 1/2" Bolt & Lock Nut, 3.5" Long
---------------	--



Contact Acumen Technologies for:

- Custom Suspension Options
- Tool & Parts Carrier Assemblies "Line Side Limos"
- Self Retracting Coiled Electrical Cable Assemblies



The following formulas are general guidelines for calculating the length of cable/hose and number of trolley/saddles needed. Differences in cable diameter, bend radius and desired extended tension will affect the calculations. This formula is based on a 1 to 1.8 ratio, travel length to actual length.

To Calculate Total Cable/Hose Length:

$$L=(t \cdot 1.8)+a+b$$

To Calculate Number of Trolley/Saddles Needed:

$$n=(L-a-b)/((d \cdot 2)+f)$$

t=[inches] Travel Length

L=[inches] Total Cable/Hose Length

d=[inches] Desired Drop From Festoon Cable Trolley

a=[inches] Additional Cable/Hose to Reach Source

b=[inches] Additional Cable/Hose to Reach Device

n=Number of Trolley/Saddles Needed

f=Acumen Saddle Factor

2" Saddle f=6.28

6.25" Saddle f=19.64

12" Saddle f=37.70

1/2" Diameter Hose Example

t=20ft (240") Travel Length

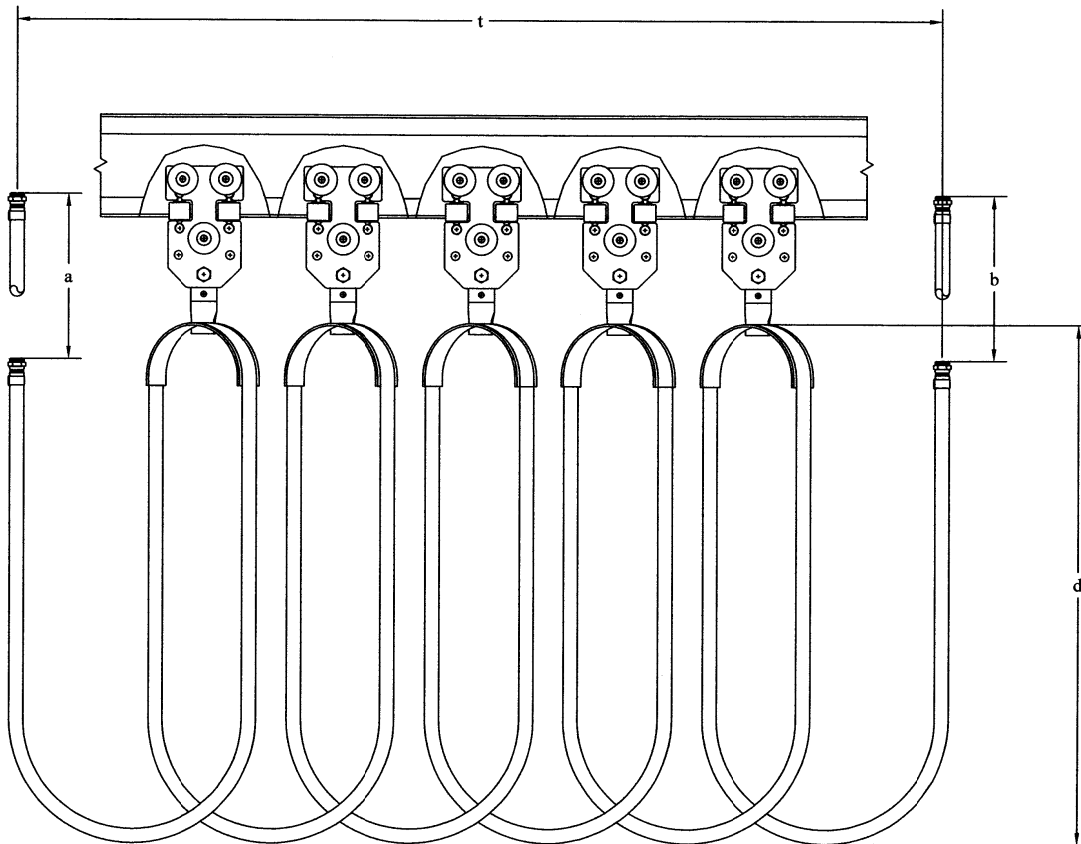
d=30" Desired Drop

a=0 Additional Cable/Hose

b=0 Additional Cable/Hose

L= 36ft (432") Total Cable/Hose Length

n=6 Trolley/Saddles Needed





ACUMEN TECHNOLOGIES, INC.

EXPRESS LIMITED WARRANTY

Acumen Technologies, Inc. warrants to the Purchaser that the equipment delivered will be free from defects in material and workmanship for one year from date of purchase. This warranty does not cover normal service parts or parts that fail due to chemical attack*, abuse, improper service or use. The foregoing warranty is exclusive and in lieu of all other warranties whether written, oral, expressed or implied, including any WARRANTY OF MERCHANTABILITY OR FITNESS FOR A PARTICULAR PURPOSE which are hereby expressly disclaimed.

If it appears within one year of the date of purchase that the equipment has not met the warranties above and the Purchaser notifies Acumen promptly, Acumen will correct any defect, at its option, either by repairing any defective part or at Acumen's sole option by making available at Acumen's plant a repaired or replacement part.

In no event will Acumen Technologies, Inc. be liable for losses due to business interruption, loss of profit, personal injury, cost of delay, or any special, indirect, incidental, or consequential damages.

* It is extremely important that our products be used in the proper environment. ABS, Polycarbonate, Nylon, Acetyl and other plastics are especially vulnerable to attack by certain chemicals and their fumes including compressor oils, cleaners, solvents, etc. Please consult with your chemical supplier to determine whether their products are compatible with components used in our products.

PLEASE CONTACT THE FACTORY FOR THE AUTHORIZED DISTRIBUTOR IN YOUR AREA.

RETURNS

Products may be returned to the factory, subject to inspection only upon express consent by Acumen Technologies, Inc. All returns are restricted to current standard goods in suitable condition for resale. Restock charges will apply. Please call for a Returned Goods Authorization Number.

DISTRIBUTED BY:

Catalog Number: FPC2013