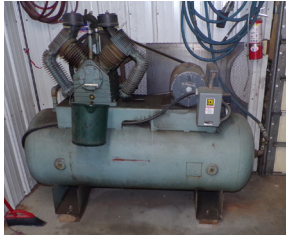


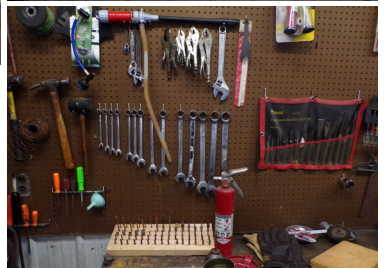
AUCTION

THURSDAY, AUGUST 1, 2024 • 5 PM

Location: 571 West Mary, Beatrice, NE (intersection of South Sumner & West Mary)



RESTROOMS ON GROUNDS



PICKUPS (SELL AT 6:00 PM)

2017 Chevrolet Colorado LT pickup, VIN: 1GCGTCEN8H1159544, 35,772 miles, V6 VBT Direct Injection engine, elec 4WD, 4-Door, all electric accessories, touch screen stereo w/ Bluetooth & Apple Car Play, front bucket seats & rear bench seat, running boards, Linex bed liner & Wrangler M-S 255/65R17 Rubber (Good) - LOOKS NEW
 2009 Ford Ranger XLT pickup, VIN: 1FTYR10D89PA23256, 130,040 miles, 2.3L engine, 2WD, bucket seats, elec accessories, Linex bed liner, Hankook 225/70R15 Rubber (85%), rear fender rust, Note: Cadillac hood ornament

RIDING LAWN MOWER • LAWN TRACTOR • PUSH BLADE • MOWER DECK (SELL AT 6:15 PM)

2015 Grasshopper Zero Turn riding lawn mower, VIN: 6514035, 52" Duramax power fold cut, 337 hours, Kohler 694 Command Pro gas engine - SUPER CLEAN
 JD 400 lawn tractor, Serial #: 080280, Vanguard 23 HP V-Twin engine, 3 Pt hyd, JD hyd tilt 54" wide x 19" tall push blade, JD 5' PTO belly mower & 26 x 12.00 rear Rubber w/wheel weights - SUPER SHARP
 JD hyd tilt 54" x 16" tall push blade
 Agri-Fab 2-wheel PT fertilizer spreader
 PT 2-wheel 40" boom 20-gal poly sprayer w/Hi-Low Gulf Series electric pump
 Sears 3.5 HP lawn edger
 Vintage JD walking plow, excellent
 Vintage No. 4965 walking plow, excellent

**** To View Above 2-Categories Call, Dennis Henrichs 402-239-8741, Ryan Sommerhalder 402-335-7937 ****

GUNS & AMMO (SELL AT 6:45 PM)

Winchester Mod. 70 30.06 SPRG, S/N G1233478, Leupold scope
 Remington Mod. 1100 12ga. magnum, 3", S/N N396631M
 Bushnell 4 x Banner wide angle binoculars • (5-Boxes) 300 Rem Ultra Mag 180 gr • (2-Boxes) Rem 30.06 SPRG 180 gr • Rem 308 Win 180 gr • Winchester 30.06 SPRG 150 gr • Winchester 22 Win Mag 45 gr • misc. 22 rounds • Winchester & Remington 12 & 20 ga 8 shot • (11-Boxes) A-A trap load • Winchester 62-Pc universal gun cleaning kit • MEC 600 Junior shell reloader • rods/reels, dip net and (2) tackle boxes • Brinkman Q-Beam spot light • (8) Beam duck decanters • (4) Budweiser Millenium Limited Edition qt. bottle w/4-12oz. beer glass sets & OTHER ITEMS.

HOUSEHOLD & MISCELLANEOUS

Haire apt. size refrig • Kenmore 3 cu ft freezer • Red Stone infrared elec heater • Energy Star humidifier • silverware & kitchen knives • large Igloo cooler • 1-gal SS hand sprayer • 8' ground rod • bungee cords • air chucks • ½" air hose • 1-gal WD 40 • 2 4-D weed killer • cleaning fluids • wood sealants • Bussmann blade fuse assortment • Taylor 11lb capacity battery scale • wood carving set • 20-gal garbage cans • large pet caddy • 11" (20) rubber tarp straps • shop brooms • new Truper alum scoop • Velux 21" x 37 7/8" new skylight • Werner FG 10' step ladder • numerous trophies • Parmak elec fencer • painted metal lawn chairs • steel bench chair • (2) nice yard gates • traps • Dempster cistern pump, Nice • Pagoma No. 2 lantern • Coca Cola wall mount bottle opener & OTHER SMALL ITEMS.

TERMS: Cash or Check with proper I D. No property removed until settlement is made. All bids off at Buyer's Risk. Not responsible for accidents or theft.

AIR COMPRESSOR • TOOLS

National 2-cylinder single phase 200-gal air compressor, S/N 95459, w/Century 10 HP elec motor • 8-ton adjustable 4-wheel engine life • iron 4-leg work top stand w/6" vise, 3'x 6' • DeWalt: 18V impact, 4 ½" 18V cut off tool, 18V reciprocating saw, 6 ½" circular saw, 18V hammer drill • Craftsman industrial 8" 1 HP wheel grinder on stand • Earthquake ST 20V impact wrench • (2) 11R C-clamp Vise Grips, 7R, 10R & (8) assorted Vise Grips • Pittsburg: 9-Pc hollow punch set, 21-Pc ¼" SAE/Metric socket set, 14-Pc punch & chisel set & ½" 13-Pc impact socket set • Craftsman 16-ga 6.5 HP wet/dry vacuum & 60-Pc ¼" Mechanics socket set • China 12-Pc comb wrench set, 3/8"-1 ¼" • hyd floor jack • ratchets & breaker bars • Signature 50Amp battery charger • Master 75 & 80,000 BTU kerosene heaters • (2) HM 4-wheel iron shop carts • ball peen hammers • receivers w/hitch balls • ext cords • wheel barrow • Co-op 5-gal gas cans • Shop Craft ½" drill press & OTHER SMALL ITEMS.

PAUL SPRANDEL ESTATE WILL SELL THE FOLLOWING:

GUNS (SELL AT 6:45 PM)

Ruger Mark II 22/45 Target Pistol 22 Cal. S/N 224-32461
 Winchester Mod. 30-30 Win S/N 15494792
 Winchester Mod. 1200 20ga. S/N L646399
 Marlin Mod. 70 22 Cal. Semi Auto S/N 15494792
 Remington Mod. 12C 22 Cal. Pump S/N 575005
 Remington Mod. 572 Field Master 22 Cal. Pump S/N 1654069
 Ithaca Mod. M66 Super Single 410ga. S/N 660741074
 Mossberg Mod. 18 5D B 20ga. Bolt Action
 Mossberg Mod. 18 3D B 410ga. Bolt Action
 Triumph Montgomery Ward Single Shot 12ga.
 Daisy BB Guns Consisting of Heddon Mod.102 – Mod.111B – Mod.25 – Mod.98
 Crossman Pell Clip 22 Cal. Pellet Gun
 NOTE: All guns to be sold according to FFL guide lines.

Ammo consisting of (6-Boxes) 12ga. • (50-Boxes) 20ga. • 410ga. • (4) old 12ga. boxes • (1) 30-30 • 22 long rifle • duck & goose Calls • other mouth calls • Misc. knives • (2) 4x15 Simmons scopes • leather ammo belts • gun cleaning supplies • hard & soft-shell gun cases • (2) gun cabinets (1) oak 10 and (1) Dbl. door 12-gun cabinet & OTHER RELATED ITEMS.

MISCELLANEOUS

Magic Chef dorm refrig • Sanborn ¾ HP air compressor • small Dempster frog • small Dempster horse • Craftsman & Husky 3/8" sockets • S&K Allen wrenches • other ¼" & 3/8" sockets • 3/8" & ½" deep wells • Craftsman 2-drawer tool box • Regal 10-drawer tool chest • many box & open end wrenches • 10-plus Vice Grips • Craftsman belt sander • Delta 1" belt & disc sander • Makita 3" hand planer • Craftsman 3/8" drill • Craftsman cordless stapler • Tool Shop 6" bench grinder • Skill Saw • Milwaukee Sawzall • Ryobi hand router • Skill hammer drill • 4" right angle grinder • 6 & 12 volt battery charger • 6" cutoff saw • alum squares & yard sticks • hand saws • tin snips • ext cords • planes • 4" vise • Skill bit set • right angle screwdriver • elec sander • elec & plumbing supplies • many tape measures • C-Clamps • Leatherman tool • nut driver set • 72" & 48" levels • 20-hole organizer • post hole digger • shovels • alum scoop • cob fork-brooms & bolt cutter • gas cans • bench drill press • saw horses • 1 HP router • router bits • elec nailer • Skil jig saw & sander • (3) pipe clamps • ammo box • ratchet straps • Poulan gas blower • 4-wheel cart • hammers • plumbing wrenches • (6) bar clamps • jack stands • sm. shop vac • hand sprayer • jumper cables • receiver hitch • Craftsman 10" miter • Workmate • crow & pry bars • chisels & punches • nails & screws • tool belt • 7 ¼" & 10" saw blades • 4-shelf metal stand • log chains • (5) open end fishing reels & other fishing equipment & OTHER SMALL ITEMS.

GARY ROLENC ESTATE

PAUL SPRANDEL ESTATE



LOG ON: www.beatrice77.net
 CLICK: "The Auctioneers"
 FOR AUCTION LISTING W/PICTURES

CLERKS:

Ton-Sol Clerking - Ph: 402-239-8741



RICK JURGENS
 Wymore • 402-520-0350

DENNIS HENRICHS
 Beatrice • 402-239-8741

GALE "SLIM" HARDIN
 Blue Springs • 402-520-2911

RYAN SOMMERHALDER
 Virginia • 402-335-7937