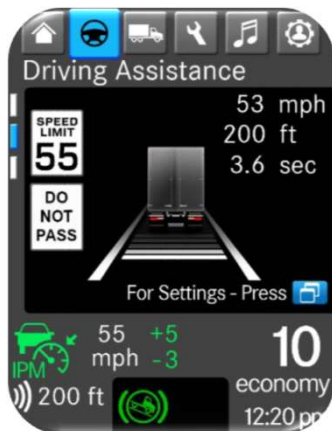


DT12- Descent Control Mode

Key points:

- To activate descent control, set engine brakes to position 1, 2 or 3.
- While engine brakes are **actively braking**, set cruise control to your desired descent speed.
- Each time you let off the service brake, your new speed will be your new Descent Control speed. *
- To resume normal cruise control, shift the engine brake stalk to the Off/Auto position.



Descent
Control Icon



After releasing the service brakes, a notification will display in the dash notifying that a new descent speed has been set.