

# SGA – Trailer Connection



Bobtail

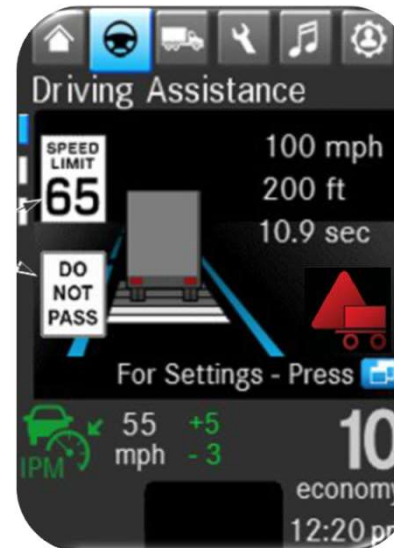


Trailer  
Detected



Tractor  
Only Due  
To Fault

A lamp in the dash will notify the driver if a compatible ABS - equipped trailer has been recognized as connected by the system and will operate in conjunction with the passenger side A-pillar with **caution** (amber) and **warning** (red) illuminations.



Caution



Warning