

Testing

Our Quality Assurance Laboratory is equipped with testing facilities to assess:

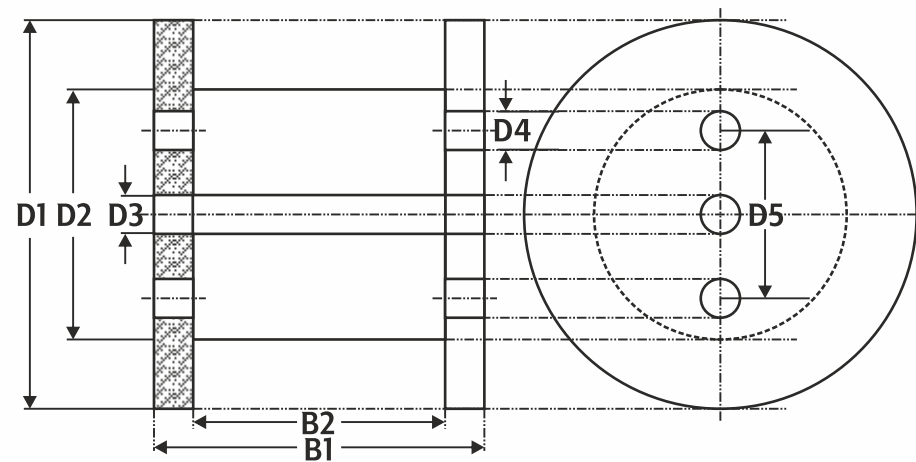
- ✕ Physical Properties
- ✕ Mechanical Properties
- ✕ Electrical Properties
- ✕ Thermal Properties
- ✕ Chemical Properties

Reference Specifications

CTC construction can be tailored to customer specifications in order to improve specific performance for winding. Standard and customised products are designed to meet international norms such as International Electrotechnical Commission (IEC), International Standards Organization (ISO), Deutsch Industries Norm (DIN) and respective national standards.

Production Scope (Packing)

KSH Standard Reel Sizes (Returnable Reels)



D1 Flange mm	D2 Core mm	D3 Bore mm	D4 Driving Hole mm	D5 Distance Of Driving Hole mm	B1 Total Outer Width mm	B2 Total Inner Width mm	Reel Tare Weight Apr. Kg	Fill Weight Apr. Kg
1250	900	82	55	560	630	530	120	1300
1400	900	82	55	560	630	530	140	1500
1600	1000	82	55	560	630	530	180	2500
1800	1100	82	55	560	1000	530	280	5000
2000	1200	82	55	560	1200	530	380	7500

**Flange Thickness 50mm

** Drum sizes shown are as per KSH standard. Other sizes as per requirement can be provided.



INTERNATIONAL

www.kshinternational.com

Continuously Transposed Cables (CTC)



Typical Applications

- ✕ Oil Filled Power Transformers
- ✕ HVDC Transformers
- ✕ Large Distribution Transformers
- ✕ 765 Kv EHV Transformers and Reactors
- ✕ 1200 Kv EHV Transformers