



**RYCO STOCKS A FULL LINE OF HOSE
FITTINGS FOR ALL BRANDS OF WETPUMPS**

Ryco O-Ring QD is interchangeable with Innovac/Transvac®, and much more rugged. Most fittings are available in Aluminum and Stainless Steel.

SUCTION HOSE:

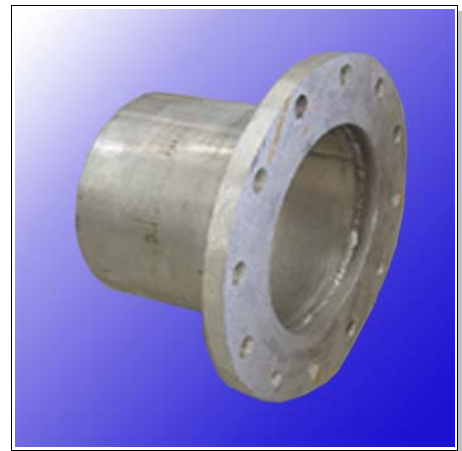
- 6", 8", 10", 12" and 14"

HOSE FITTINGS:

- ASA Flanges
- QDs
- Hose Clamps
- Suction Inlets
- Elbows
- Tees
- Y-Valves



HOSE CLAMPS



HOSE FITTINGS



RAINWAY QD



RYCO QD

(compatible with Innovac/Transvac®)

SPECIFICATIONS MAY CHANGE, CONTACT RYCO FOR SPECIFIC APPLICATIONS

Address: 6810 220th St. SW
Mountlake Terrace, WA 98043
USA

Phone: 425-744-0444
Fax: 425-673-2666

Web: rycous.com
E-mail: sales@rycous.com

WETPUMP HOSE QUICK DISCONNECTS

There are 4 types of aluminum hose connections commonly used on Fish Wetpumps.

Each has advantages.

Ryco stocks all types.

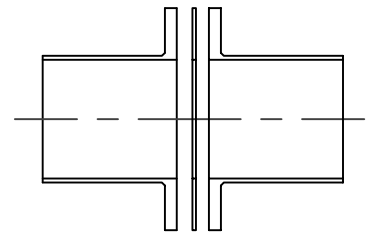
DESCRIPTIONS:

1. **ASA FLANGE:** Simplest and most rugged, available worldwide in all industries. With flat rubber gasket and galvanized steel bolts/nuts/lockwashers.

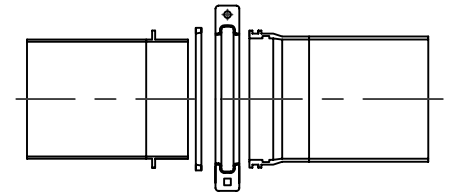
2. **TRAVIS QD:** Primarily used for irrigation, inexpensive, can only be used on pressure. With 2-piece mild steel clamp and V-ring seal.

3. **INNOVAC WETPUMP QD:** Widely used in North America, light weight, with stamped stainless 2-piece stainless clamp and 3/16" O-Ring.

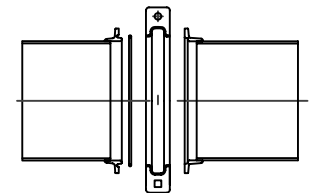
4. **RYCO WETPUMP HVY.QD:** Ryco Standard, heavier than Innovac, cleaner inside for smoother flow, with rolled and welded heavy clamp and 3/16" O-Ring. All parts of this clamp are interchangeable with Innovac.



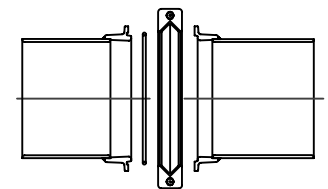
ASA FLANGE



RAINWAY QD

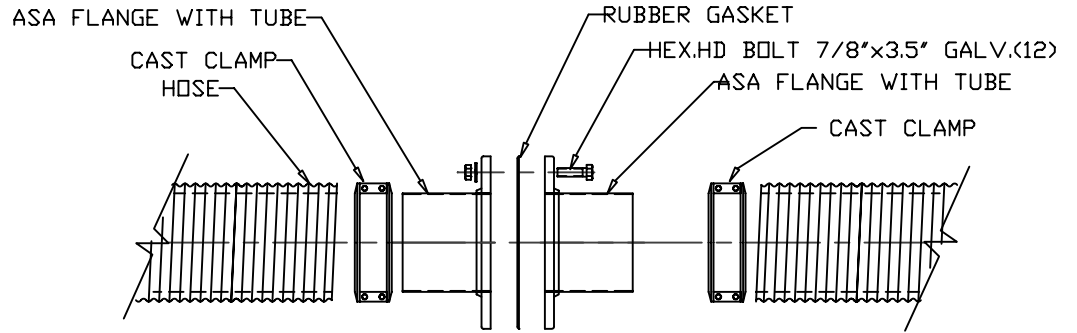


INNOVAC QD

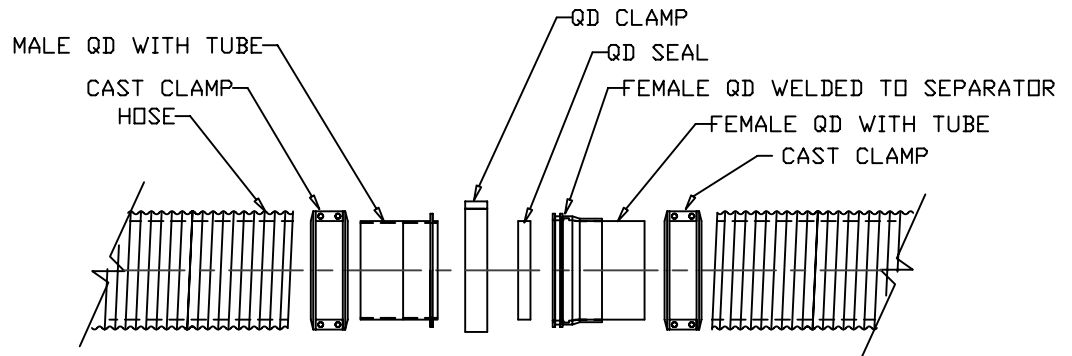


RYCO HVY.QD

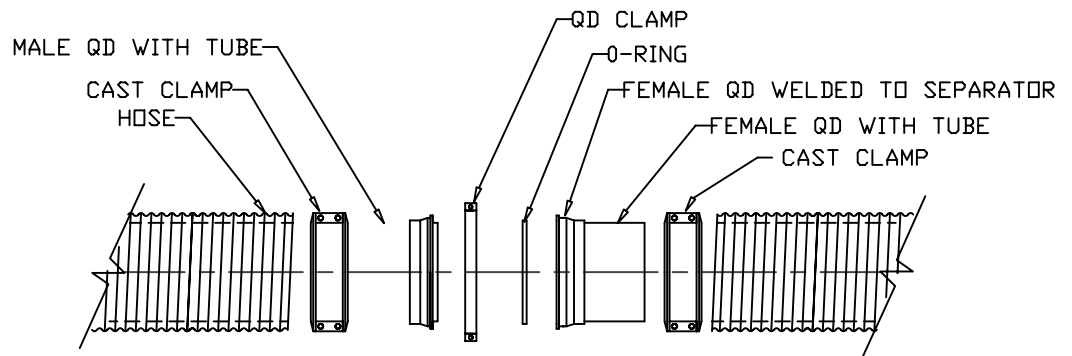
#902B HOSE ASSEMBLIES



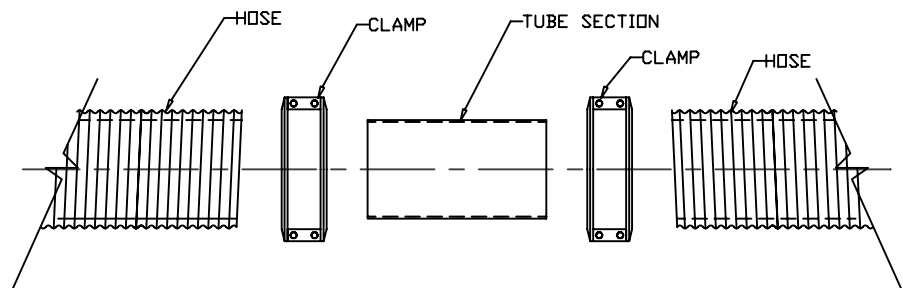
ASA FLANGE



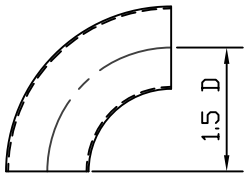
TRAVIS QUICK DISCONNECT



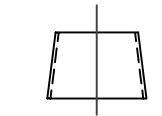
O-RING CLAMP
RYCO, INNOVAC, TRANSVAC, ETI



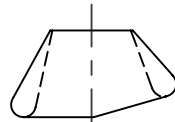
HOSE SPLICE



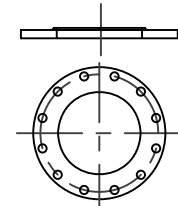
ELBOW, LONG RADIUS
D3001-20



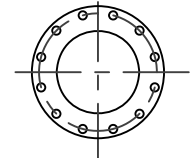
CAST REDUCER
TRAVIS



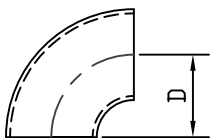
NOZZLE
D3001-46



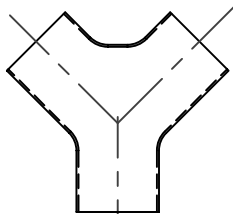
ASA FLANGE
A1105



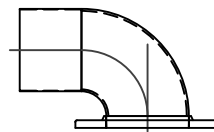
GASKET, FLAT FACE



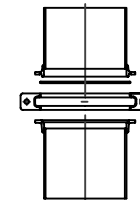
ELBOW, MEDIUM RADIUS
FRASER



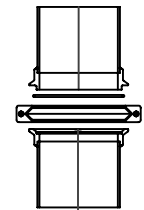
WYE, LONG RADIUS
A3001-60



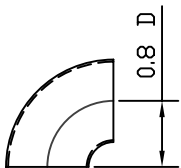
FITTING, FLANGE x ELL x TUBE
A1101-17



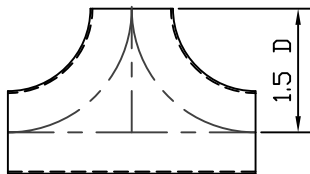
INNOVAC QD
A1101-20



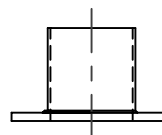
RYCO XHVVY.QD
A1101-26



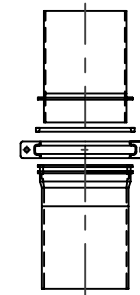
ELBOW, SHORT RADIUS
TRAVIS



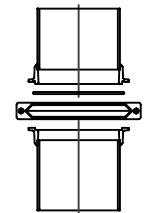
TEE, LONG RADIUS
D3001-06



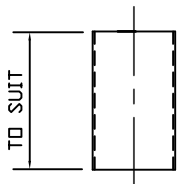
FITTING, FLANGE x TUBE
A1101-15



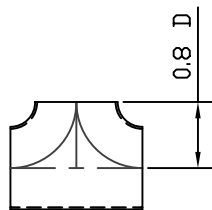
RAINWAY QD



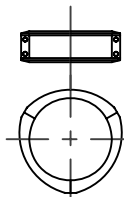
RYCO HVVY.QD
A1101-23



TUBE SECTION

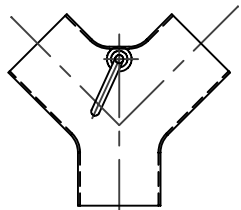


TEE, SHORT RADIUS
TRAVIS

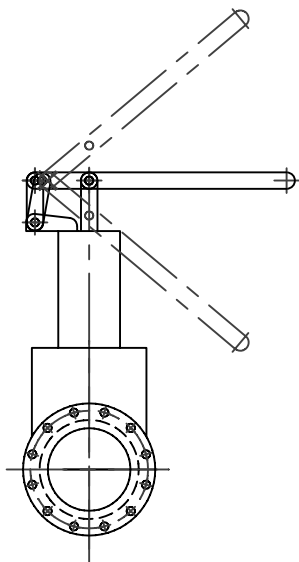


HOSE CLAMP, 3 PIECE CAST
A1101-18

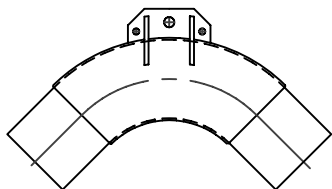
QUICK DISCONNECTS



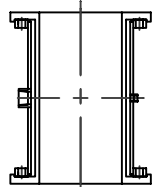
WYE VALVE
D4076



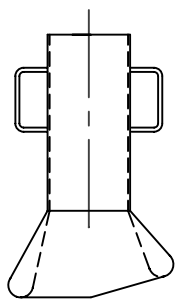
SLIDE GATE VALVE
W/MANUAL OPERATOR



LIFTING ELBOW
D3001-30



BLADDER VALVE
D4758



SUCTION ELBOW
D3001-50