

Pronounced as [ômbē]

Board of Directors Biographies



Chair:
Irene Reyes

Founder of AWMB (pronounced as ômbē) dba Black and Minority Contractors is also **CEO and Founder of Excel Supply Company.**
excelsupplycompoany.com

Irene Reyes, an enthusiastic, tenacious, compassionate, and vivacious individual is better known as “the Glove Lady®” and “the Supply Lady®” is the CEO and Founder of Excel Supply Company in Fife, WA. Just unexpectedly, Ms. Reyes decided one day the best way to give back to the community was to form a non-profit, AWMB which she initially funded this organization in 2017. Ms. Reyes made her first sale of twenty boxes of gloves by telephone from her one-bedroom apartment worth \$120 and with limited capital. As an importer, distributor, and manufacturer for almost 29 years and several millions in revenues, the company continues to thrive and diversify in the supply chain solutions for the public and private sectors providing medical, safety, office, and cleaning supplies. EXCEL has been certified in several states as a woman, minority, DBE, SBA 8a, SBA Hub-zone, SDB, company since 1995. By utilizing resources offered by both the federal and local government, she competitively won bids thereby was awarded three federal GSA Contracts. Ms. Reyes has strong conviction in giving back to the community, equality, advocacy and achieving legislative actions for the benefit of woman and minority owned businesses. She was an Advisory Board Member for the Washington State Small Business Development Center, which is a U.S. Small Business Administration funded program that assists established small businesses grow to the next level. Irene Reyes has served on numerous boards for small businesses, although she finds it most compelling to serve on the Advisory Board of the (OMWBE) WA Office of Minority Women Business Enterprises and as a Governor Inslee’s appointed advisory board member of WA DES CPARB, Capitol Projects Advisory Review Board. Ms. Reyes also serves on the Pierce County Workforce Central and NAMC WA. Ms. Reyes continues to write and speak for statewide functions, meetings related to business development, empowerment for emerging or start-up businesses, woman and minority business barriers, government contracting, time management, marketing, and the integration of technology with every business aspect. The Glove Lady® and Supply Lady® started a consulting business, Certo Consulting, LLC on the side dedicated to sharing almost three decades of experience to small and emerging businesses on bidding, government contracting and procurement. In 2022, Ms. Reyes Established Manol Development, LLC that distributes and erects metal buildings.



Vice Chair:
Elisa Young, J.D., C.D.E.

Senior Consultant Corporate Services Director of Diversity Equity & Inclusion.
www.parametrix.com

Elisa Young has worked as an Attorney and an Equity, Diversity & Inclusion Advisor for more than 12 years representing and consulting individuals, families, businesses, non-profits and government. Elisa’s diverse background, legal training, private and public experience and ability to meet goals are strategic assets which give her the ability to formulate successful solutions. She has negotiated successful business transactions and represented families, individuals and small businesses, providing consulting in business and program diversity, anti-discrimination frameworks and supplier diversity initiatives. After practicing law for over 10 years, Ms. Young transitioned to the public sector, using her legal background to strategically advise and consult executive leadership on state and federal compliance, policies and programs related to EEO, Title XI, Title XII, Accessibility, and foundational principles of Equity, Diversity & Inclusion. Prior to that, she managed supplier diversity for the State of Washington and led the accessibility programs for the Washington State DSHS. Being uniquely positioned in the practice of law and it’s cross-cultural capabilities, Ms. Young possesses an exceptional ability to respond to the challenges of an ever-evolving workforce by spearheading internal and external initiatives from design through execution, resulting in effective outcomes that are precise, practical, persuasive, equitable and sustainable. Ms. Young is a Certified Diversity Executive, a graduate of The Ohio State University College of Law and Oakwood University (HBCU), where she earned double BBA’s in Business Administration and Accounting.



Treasurer:
Morris Aldridge

Executive Director of Planning and Construction for Tacoma Public Schools.
www.tacomaschools.org

Morris Aldridge stands at the front of the replacement and renovation projects for one of the largest school districts in Washington State as Executive Director of Planning and Construction for Tacoma Public Schools.

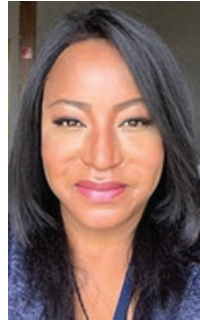
Tacoma Public Schools (TPS) is the main school district for Tacoma, Washington. Composed of 35 elementary schools, 11 middle schools, 10 high schools and 4 early learning centers. TPS serves more than 30,000 students in preschool through grade 12 and over 5,000 employees, making them one of the largest employers in the greater Tacoma area. Morris has spent the last 3 years piloting new projects and implementing innovative school design ideas for TPS. He is currently overseeing Washington State's first K-12 public school design-build project. Embracing the core values of innovation, integrity and growth, Morris consistently ranks among top visionaries in educational programs and projects. Throughout his 30-year tenure, Morris has been a lighthouse in the learning environment serving as teacher, principal and assistant superintendent of public schools in Texas. Morris holds a Master of Arts degree from the Texas University. Morris Aldridge is also a valued speaker in facilities planning, capital projects and construction bond projects.



Secretary: Robin Strom

Diversity Manager, Andersen Construction
www.andersen-const.com

Robin Strom has been in the industry for 14 years and brings years of experience working with diversity compliance programs. Robin is passionate about creating opportunities to develop connections and integrate diversity and racial equality goals into all facets of Andersen Construction's business approach, including long- and short-term strategies, community involvement, and racial and gender workforce opportunities. Most recently she created a diversity program for joint venture partners working on a large construction project in Redmond WA for a confidential high-tech client. Robin has managed diversity contract compliance programs for Federal DBE and SBA programs as well as managed programs for OFCCP compliance for construction projects. Robin has earned Diversity Professional Credentials from Morgan State as a Certified Compliance Administrator (CCA) and a Master Compliance Administrator (MCA).



Director: Linda Womack

Linda Lee Womack is the **Director of Small Business Finance and Community Support for WA Department of Commerce.**
www.commerce.wa.gov

Since 2016, she has been responsible for targeting Minority-Owned enterprises with technical and strategic business consulting to increase their capacity to create jobs. Under her leadership she has assisted Minority-owned businesses in the region secure over \$220M in contracting and financing opportunities. Prior to her role as the business center director, Linda operated a boutique Korean interpretation/translation firm specializing in cultural brokering, business contracts, and medical interpretations. Prior to opening her firm in 2015 Linda spent twelve years in Asia working as a "go-to-market" and global marketing strategist Samsung, AIG International, and the Korean Tourism Organization to increase their presence globally. She received her bachelor's degree in Business Administration from the University of Washington- Tacoma and holds an MBA from the Helsinki School of Economics. She also served as the treasurer (2019-2021) for the National Association of Minority Contractors – Washington Chapter and on the board of Trustees for AGC-Washington.



Director: Young Song

Owner and Founder, Young Song Consulting, LLC.
songconsultingllc.com

Young brings more than 20 years of experience working for prime contractors during his entire career. He began his career as a field engineer, working on the Tacoma Narrows Bridge Design-Build. He then worked his way up as a superintendent, structures manager, project manager, and regional manager, gaining experience not only in the field, but also in estimating and scheduling, while successfully delivering projects. Throughout his career with prime contractors, he had the opportunity to work with S/DBE firms, recruiting, engaging with, and mentoring them on multiple projects. In 2017, Young recognized his calling to work more closely with the S/DBE community, helping not only certified firms, but also prime contractors in understanding how to better engage the community and ensure that work packages are sized correctly. He has worked directly with more than 15 UDBE and FSBE firms in the Pacific Northwest, Canada and Alaska to provide business mentoring and assistance since opening his own firm. Construction management professional services including highway, road, street, bridge, and alternative delivery.



Director:
Shana Greenberg
Barehand, Esq. CDE,

Procurement Inclusion and
Equity Program Manager
Washington State
Department of Enterprise
Services
des.wa.gov

Shana Greenberg Barehand, originally from Los Angeles, is Mono Indian from the Cold Springs Rancheria in California. Shana has a law degree from Arizona State University and a Bachelor's in psychology from Cal State Long Beach. Shana entirely supported herself through college and law school. Her previous jobs include working at the Southern California Indian Center, Indian education program counselor, waitressing, and bar tending. As an attorney she has worked at the U.S Environmental Protection Agency as an environmental enforcement attorney, the Federal Communications Commission as the senior tribal advisor to the Commissioner, and the Tribal Liaison for the Washington State Department of Revenue. Her expertise in establishing and leading innovative new programs led her to the DES where she established the Procurement, Inclusion and Equity Program, which helps lead the state's effort to procure more goods and services from small, diverse, veteran owned businesses.

In a volunteer capacity, she coaches soccer, serves on the Tumwater School Districts Equity Committee and is the co-founder of the Wa-Ya Outdoor Institute, the State's only outdoor camp that teaches outdoor adventure, STEM, and intertwines indigenous culture and knowledge. In the past she has served as the Treasurer of the National Native American Bar Association, Chair of the advisory board for the Washington Internships for Native Students (WINS), Washington DC, and is a founding board member and past Treasurer for the Society of American Indian Government Employees.

Shana is married to actor/filmmaker Jeffrey Barehand and has five children. As a family they participate in a diverse array of experiences such as volunteering for important causes, going to Pow Wows, and snowboarding.



Director: Lily Keeffe

Supplier Diversity
Manager Children's
Hospital

www.seattlechildrens.org

Lily is known for casting a vision and captaining high-level strategic initiatives, steering paradigm shifts across the continuum of government, public service, private organizations, and social impact spaces. She is also recognized as a transformational leader who drives customer adoption, raises community awareness, supports accountability mechanisms, and evolves programs for long-term, sustainable growth. I am at my best when analyzing weak integration points across the value chain while mobilizing cross-functional teams to deploy solutions. She enjoys and thrives by attracting, developing, and retaining the best talent needed to capacitate businesses for sustainable growth and profitability. Her peers know me as a dedicated and servant leader who drives top levels of employee performance while building world-class talent. Extensive experience in DBE and SBP Programs, business counseling, outreach and well versed in compliance for federal, state and local government.



Director: Carrie Whitton

Outreach + Inclusion
Manager, Forma
Construction.

formacc.com

Carrie brings over 18 years' experience in construction business development and operations. At FORMA, she works closely with project teams to develop, implement, and assess contract-specific inclusion plans—evaluating the data and adjusting to provide an ever-greater number of subcontracting and mentorship opportunities for historically underutilized businesses. In this role Carrie interfaces with the offices of W/MBE, DBE, VOB, BEE, and SBA subcontractors and suppliers—providing mentorship, resources, and assistance with the contractual requirements of the public process. Previously she worked for Sound Transit as a Contracts Specialist and owned a small design services business. Carrie was raised in rural Montana and has a Bachelor of Arts in Social Work from the University of Montana.



Director: Jason Frazier

Jason Frazier has been a **Project Manager and General Superintendent** for 30 years with various construction experience and a proven history of managing self-performed work and overseeing subcontracted scopes.

www.briccivil.com

Jason brings a multitude of experience managing civil infrastructure, heavy highway projects and structural building projects. He is experienced in federal, state, and local government construction projects. Jason grew up in Grants Pass, Oregon and he started his career in Construction in his family's General Construction business at an early age where he collaborated with his father, uncles, and grandfather in residential and light commercial construction. After attending college, Jason owned and operated his own general construction company in Southern Oregon, prior to joining the Carpenters Union to further his career in construction. Jason is still a standing member of local 196 Piledrivers in Fife, WA (22-year member) and currently is active in the NW market as a Regional Manager with Brice Constructors Inc. an 8a Native owned Alaskan company that is based out of Anchorage AK. Brice currently has offices in Anchorage AK, Federal Way, WA, Houston TX, Morgan City, Louisiana, Salt Lake City UT, and Florida. Brice has sixteen subsidiary companies located in Alaska and the lower forty-eight. His certifications and training include Journeyman Carpenter/Pile Driver, Willamette Carpenters Training Center- Superintendent Training Program, LEED Training OSHA 10, OSHA 30, Superintendent Safety Training (AGC), Rigging Certification, Welding Certification (D1.4, Light Gauge, rebar, pile splice, pipe) and First Aid Certified. He is passionate to help small and minority firms get to the next level by training, sub-contracting and networking.



**Director:
Robynne Thaxton**

Thaxton Parkinson PLLC is a Mercer Island based law and consulting firm. Robynne Thaxton (formerly Robynne Parkinson) is the **Managing Member of Thaxton Parkinson PLLC.**

thaxtonpark.com

Robynne is one of the leading experts in construction law and alternative procurement both in Washington State and on a national basis. Robynne has a passion for helping folks in the construction industry understand and deliver best practices in alternative procurement and is very active with construction industry organizations.

Robynne served on the National Design Build Institute of America Board of Directors from 2010 - 2016. She also serves on the Washington State Capital Projects Advisory Review Board. In addition, she is the co-chair of the DBIA Progressive Design-Build Committee and was the Vice Chair of the DBIA Education Committee and the former chair of the DBIA National Legal and Legislation Committee, where she continues to serve and is instrumental in drafting and revising the DBIA form Design-Build contracts and subcontracts. Robynne has been a DBIA designated Design-Build Professional since 2005 and is in the first class of Design-Build Designated Fellow. Robynne was named as a Washington Super Lawyer in 2010-2021. She is also the 2021 recipient of the DBIA Distinguished Leader award. A list of Robynne's projects can be found in the resume below. Recent clients include the cities of Seattle, Portland, Tacoma, Spokane, and Richland; Los Angeles County; Sound Transit; the Port of Seattle; the Washington State Department of Enterprise Services; the Washington State Department of Transportation; the University of California System; the University of California at San Diego; Western Washington University; and Bonneville Power Administration.

Robynne also has a separate consulting firm: Progressive Design-Build Consulting, LLC. Robynne's services with PDBC is limited to consulting only, and she does not perform legal work under this company; however, having two firms allows Robynne full flexibility to support clients in multiple jurisdictions and with many different types of projects.

Both Thaxton Parkinson PLLC and Progressive Design-Build Consulting, LLC are certified by the Washington State Office of Minority and Women Business Enterprises as a Federal DBE and State WBE.

When not assisting clients, Robynne can be found hiking, boating, wrangling her dogs, or hanging out with her husband and kids.



**Director:
Tamaka Thornton, JD,**

**Community and
Citizenship Director for
Turner
Construction-Seattle.**

*[www.turnerconstruction.com/
office-network/seattle](http://www.turnerconstruction.com/office-network/seattle)*

Tamaka has over 20 years' experience within public, private, and legal sectors specializing in diversity within the construction and transportation industries working with clients and agencies to develop, administer, and monitor community-outreach programs and contractor-diversity/inclusion programs to ensure participation from traditionally underutilized small, women, and minority owned businesses.

Previously, Ms. Thornton held the position of Disadvantaged Business Enterprise (DBE) Program Manager at Seattle-Tacoma International Airport and Regional M/W/DBE Diversity Manager-West Division for Dragados USA, in which she provided MWDBE Program Compliance oversight and monitoring of M/S/W/DBE programs and outreach efforts.

Ms. Thornton has worked with project's Construction and Procurement Departments to ensure that underrepresented/marginalized businesses were afforded an opportunity to bid and work on the projects based on their expertise and overall firm's capabilities. She has worked on several key transit and heavy civil construction, GC/CM, Design-build, Design-bid-build, and P3 highway construction projects focusing on DBE and Labor Contract Compliance in Texas, North Carolina, California, Washington(state), and Arizona. Also, she previously worked at the Birmingham International Airport (Birmingham, AL) and with the law firm of Gentle, Turner, Sexton & Harbison on several multi-million/billion-dollar Personal Injury/Property Class Action lawsuits.

Currently, Ms. Thornton is responsible for Turner Seattle's overall diversity and inclusion business program including compliance, as well as Youth Engagement, Workforce Development-Apprenticeship project goals (Proposal thru Closeout phase), and Community Service. Furthermore, Ms. Thornton facilitates training personnel and engaging the community and trade partners in delivering the best diversity and inclusion initiatives. She is a graduate of Faulkner University (BS), University of Phoenix (MBA, MHR), and Miles Law School (HBCU).