



Absher Construction Company

ASSOCIATION OF WOMEN AND MINORITY BUSINESSES

MAY 8, 2024

AWMB CONNECT

CORE VALUES:

We care about people

We are servant leaders

We do things right

We do right things

AWMB CONNECT

MISC

- Signatory Carpenters and Laborers Union
- Self-Preform Concrete and Framing
- Office Locations:
 - Puyallup, WA
 - Bellevue, WA
 - Wenatchee, WA

AWMB CONNECT

Absher maintains a healthy balance of procurement types:

Competitive-Bid

Negotiated Design-Build

General Contractor/Construction Manager (GCCM)

AWMB CONNECT

Project Examples:

DOD (FY23 UEPH Barracks, JBLM Fleet Replacement Squadron Expansion)

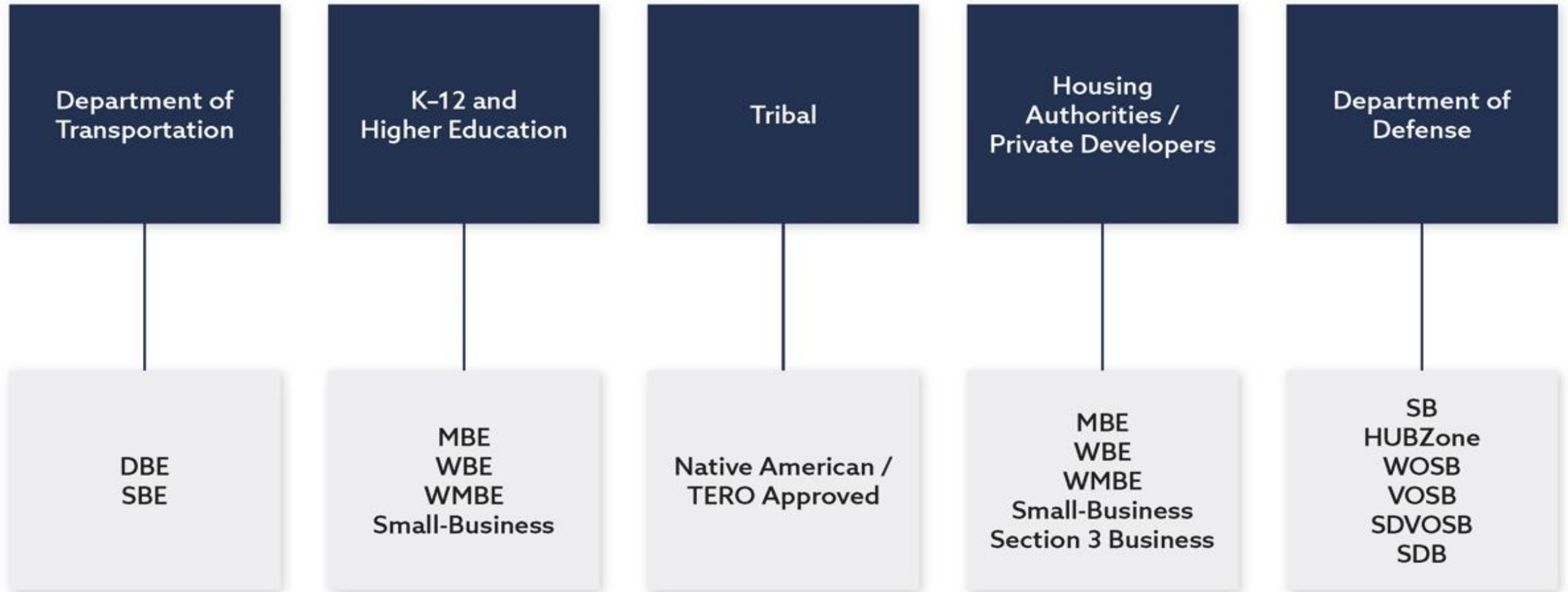
DOT (Auburn and Kent Stations, Pierce Transit)

K12 (Tacoma Public Schools, Highline Public School, Seattle Public Schools, North Thurston Public Schools)

Higher Education (Pierce College STEM)

SMALL BUSINESS ESSENTIALS

Small Business Essentials organizational chart by clients and certifications.



AWMB CONNECT

Current Bid Opportunities:

Sound Transit Auburn Station Parking – DBE 6%

PROJECT DESCRIPTION: (Bid Phase Summer 2024)

The Auburn Station Parking and Access improvement project is to provide facilities that enhance access to the commuter rail station. The project includes a new parking garage located at 1st Street Northwest. The project is expected to be complete by 2027.

Contact: Project Manager Jared Blakeman, Jared.Blakeman@Absherco.com

AWMB CONNECT

Current Bid Opportunities:

Sound Transit Kent Station Parking and Access Improvements – SB 15%

PROJECT DESCRIPTION: (Bid Phase December 2024)

The Kent Station Parking and Access Improvements project is a design-build of 465 stall 4-story parking garage and associated utility, roadway, lighting, landscape and hardscape improvements. Project also includes design-build of King County Metro bus layover and comfort station, 12 bus stalls with 3 EV design bus charging system. The project is expected to achieve substantial completion by 2027.

Contact: Project Manager Jessica Tibbets, Jessica.Tibbete@Absherco.com

AWMB CONNECT

Current Bid Opportunities:

Seattle Public Schools John Muir Elementary – MBE 20% / WBE 6%

PROJECT DESCRIPTION: Occupied Campus (Bid 5-24-2024)

The John Muir Early Learning Addition and Miscellaneous Improvements GC/CM project includes a four-classroom early learning addition with before and after school child care support spaces; upgrades to the fire suppression system; replacement of the domestic water heater system; modernization of the existing loading dock, site improvements to the playground and off-site improvements within the public right-of-way to facilitate delivery access. Project complete by August 2025.

Contact: Sam Glandon-Hall, Lead Estimator Sam.Glandon-Hall@Absherco.com

AWMB CONNECT

Current Bid Opportunities:

Oak Harbor Public Schools: Bids 5-21-2024 / 2:00 p.m. (PT)

PROJECT DESCRIPTION:

Full replacement of the existing Crescent Harbor Elementary School. The new school building will be approximately 80,000 SF, built on the existing playfields on the south end of the site while the existing school building is in operation. After the new building is occupied, the existing building will be abated and demolished and new playfields, hard surface play, parking, landscaping, bus drop-off and parent drop-off areas will be completed. The project is expected to be complete by 2027.

Contact: Lead Kurt Balmer, Estimator Kurt.Balmer@Absherco.com

AWMB CONNECT

Subcontracting Opportunities:

Scopes not limited to:		
Demolition / Abatement	Masonry	Rough Carpentry
Structural Steel	Interior Finishes	Casework
Joint Sealants	Shingle / Metal Roof	Siding
Gutters	Drywall	Acoustical Ceiling
Flooring	Painting	HVAC and Plumbing
Electrical	Earthwork and Utilities	Landscaping
Asphalt Paving	Signage	Concrete*
*Absher self-perform concrete		

SMALL BUSINESS ESSENTIALS

How small businesses connect with Absher:

- Subcontractor and Supplier Registration Form (SmartBid Data)
- <https://www.absherco.com/subcontracting-opportunities/>



The image shows a screenshot of a web browser displaying the Absher Subcontractor/Supplier SmartBid Registration Form. The page has a dark blue header with the text "Absher Subcontractor/Supplier SmartBid Registration Form". Below the header, the form is titled "Company Information" and contains three numbered sections:

1. Full Company Name:
Enter your answer
2. Mailing Address:
Enter your answer
3. Phone Number:

AWMB CONNECT

Stephanie Caldwell

Director of Diversity, Equity, and Community Engagement

Stephanie.Caldwell@Absherco.com

(253) 845-9544