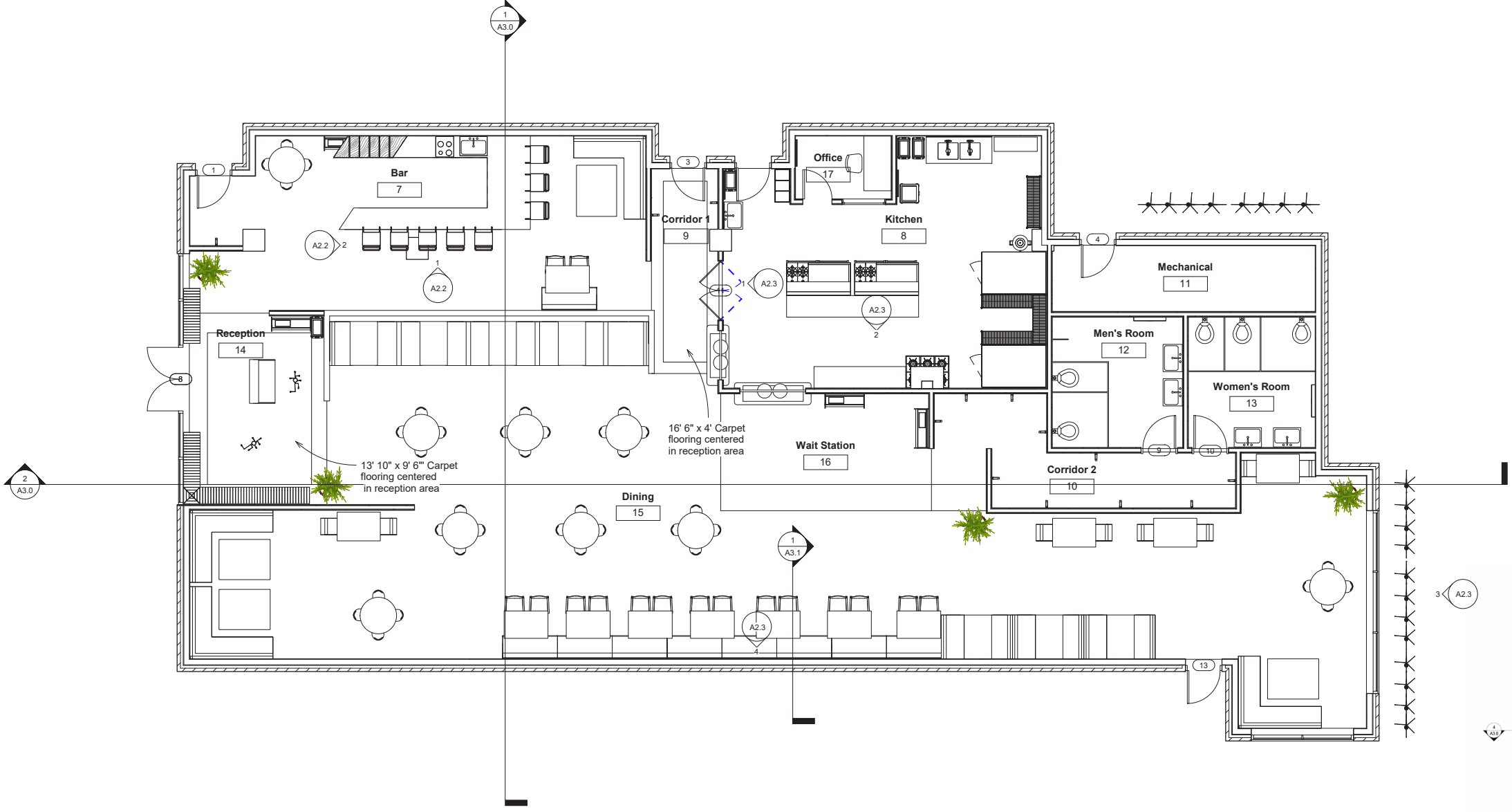




INTERIOR DESIGN
PORTFOLIO
.....
brit mckinney

COMMERCIAL TENANT IMPROVEMENT



FURNITURE FLOOR PLAN
SCALE 3/16" = 1' - 0"

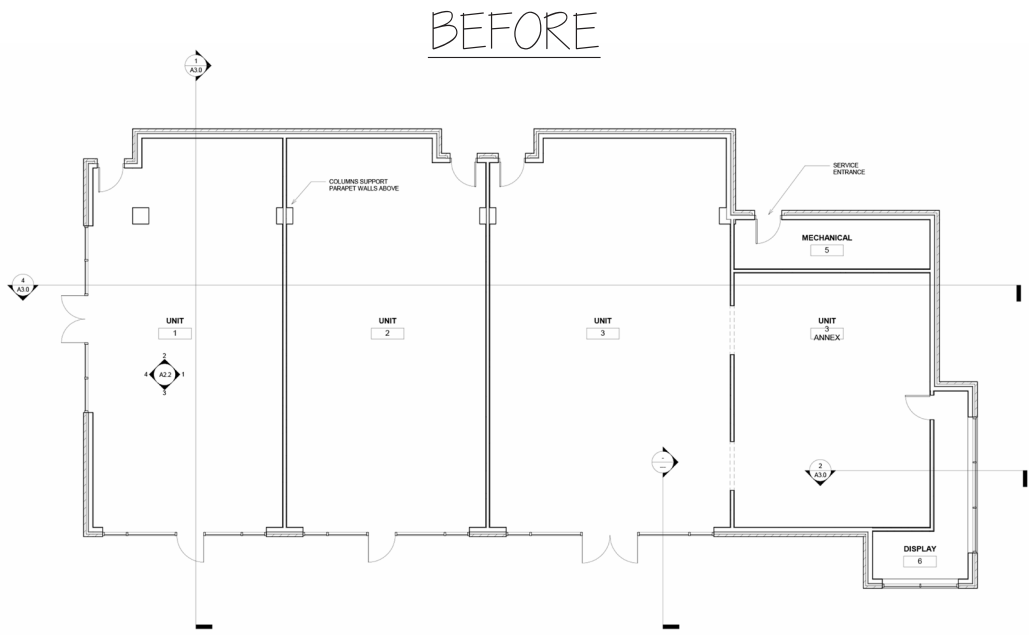
Produced in Autodesk Revit
Labeled at original scale

Objective:

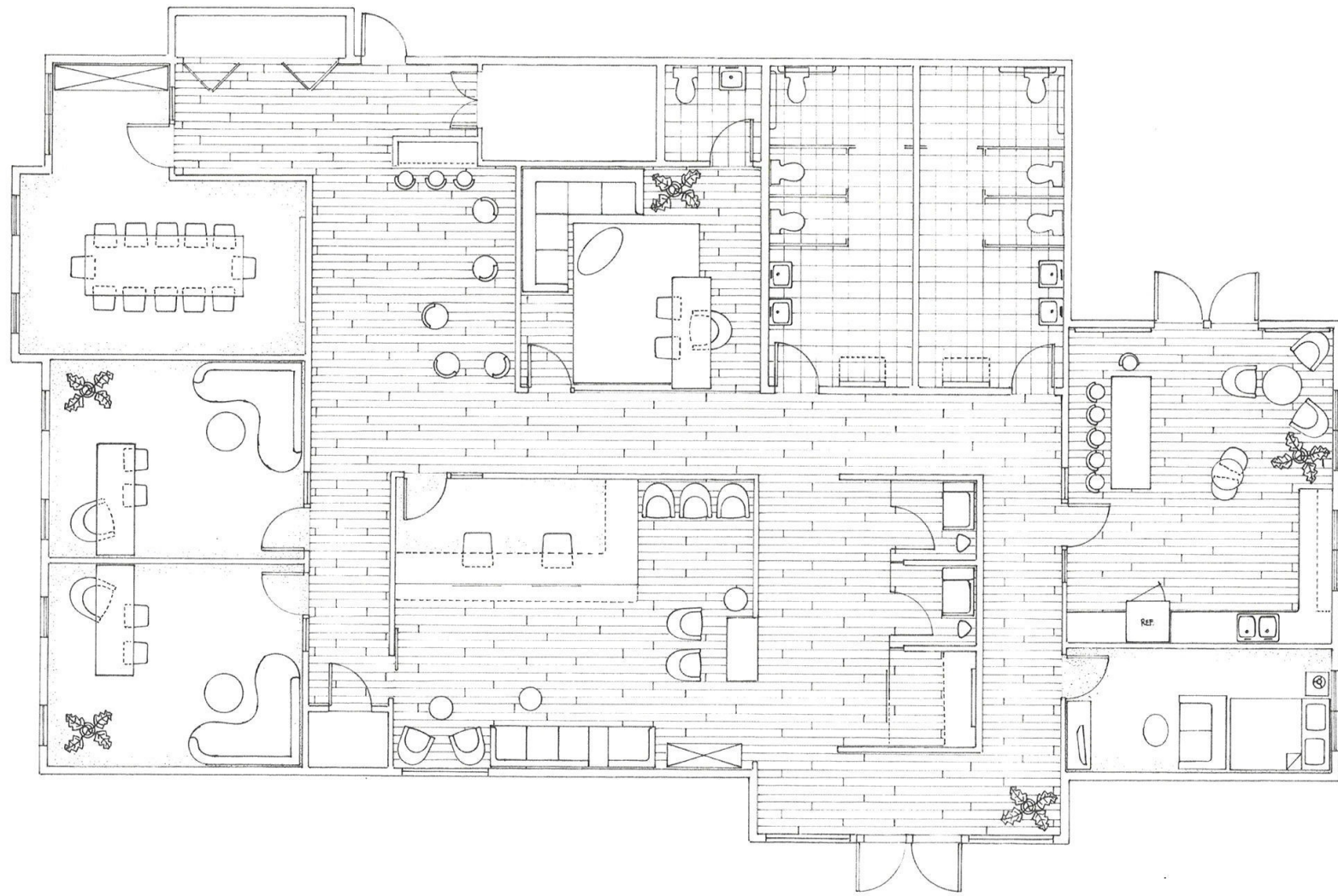
Design a commercial business space within an existing strip mall building.

Solution:

Space is converted into a restaurant including kitchen, foyer, bar, restrooms, booth and table dining areas.



DOUGLAS FIR HEALTH & WELLNESS CENTER



FURNITURE FLOOR PLAN
SCALE 1/4" = 1' - 0"

Produced in pen & ink
Labeled at original scale

Objective:

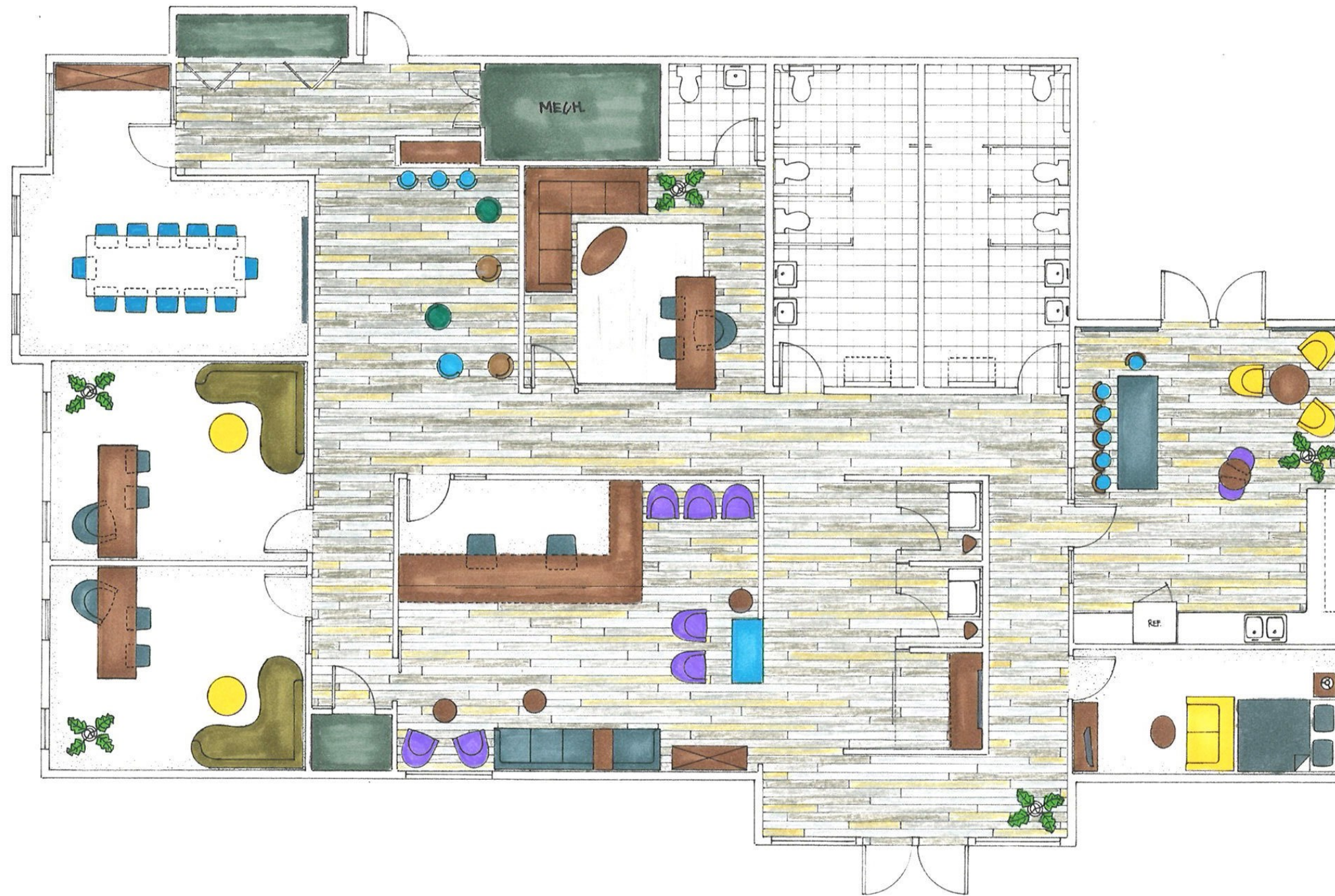
Design a commercial office space within existing sq footage of a multi-business building. Space must accommodate >12 working employees, with 3 private offices, and support business needs, keeping aligned with client's design interest.

Solution:

Space has been designed to meet client and patient needs, including ADA considerations, a private wellness room for employees and/or nursing individuals, kitchen, outdoor patio, restrooms, individual conference/call rooms, larger conference room, reception and waiting areas, lounge/study hall, and 3 offices.

Produced in pen & ink
Hand rendered in marker





FURNITURE FLOOR PLAN
SCALE 1/4" = 1' - 0"

Produced in pen & ink
Hand rendered in marker & color pencil
Labeled at original scale





FURNITURE
selections

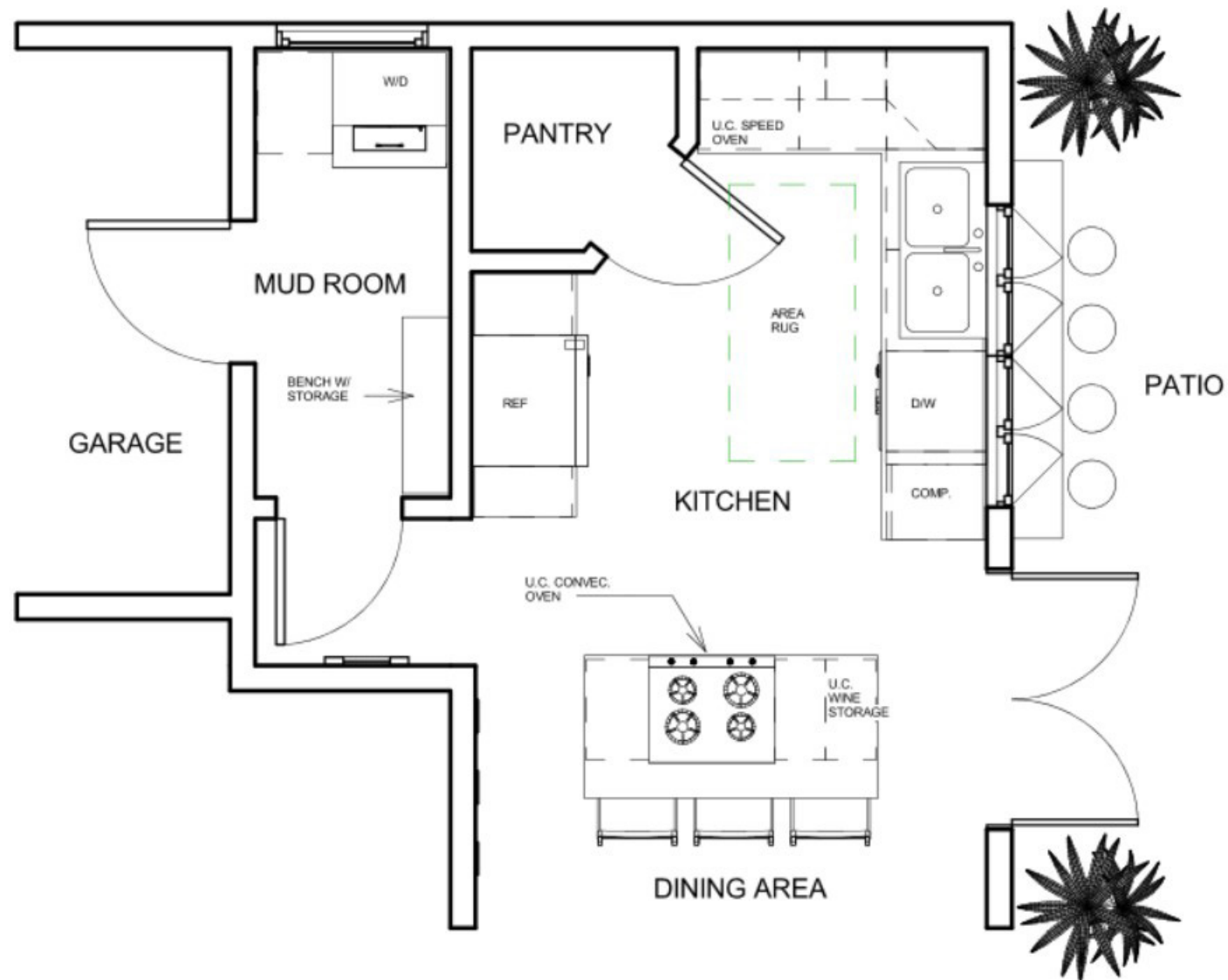


COLOR DRAWINGS

Produced & rendered by hand with Prismacolor pencil on Vellum paper



TAYLOR KITCHEN REMODEL



FURNITURE FLOOR PLAN

SCALE 1/4" = 1' - 0"

Produced in Autodesk Revit
Labeled at original scale



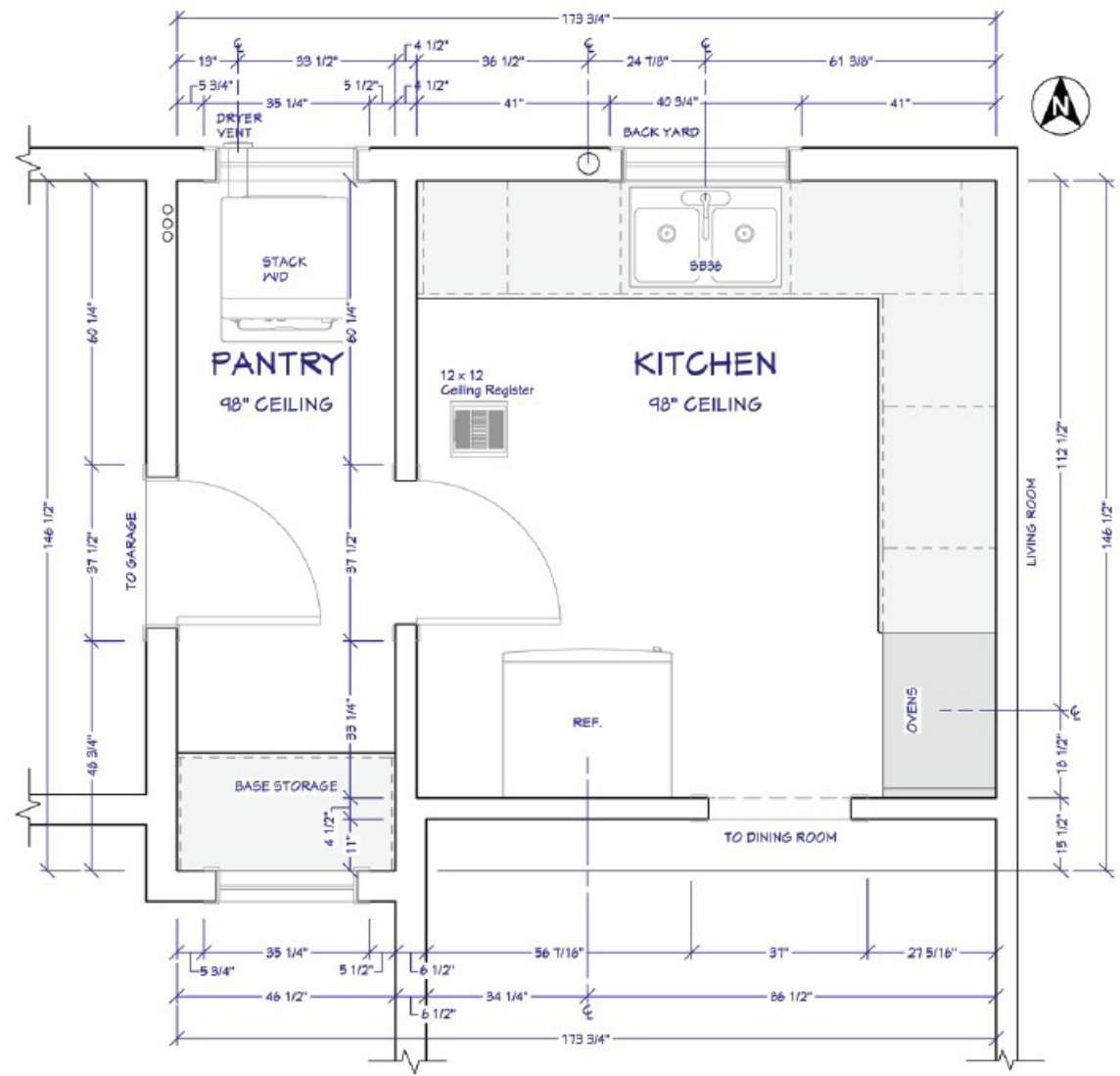
Objective:

The family relocated to a home in Colorado with sweeping views of the Boulder Mountains. The kitchen was small and outdated. The client wished to have a kitchen that could accommodate the entire family working in the kitchen together, while enjoying the view beyond.

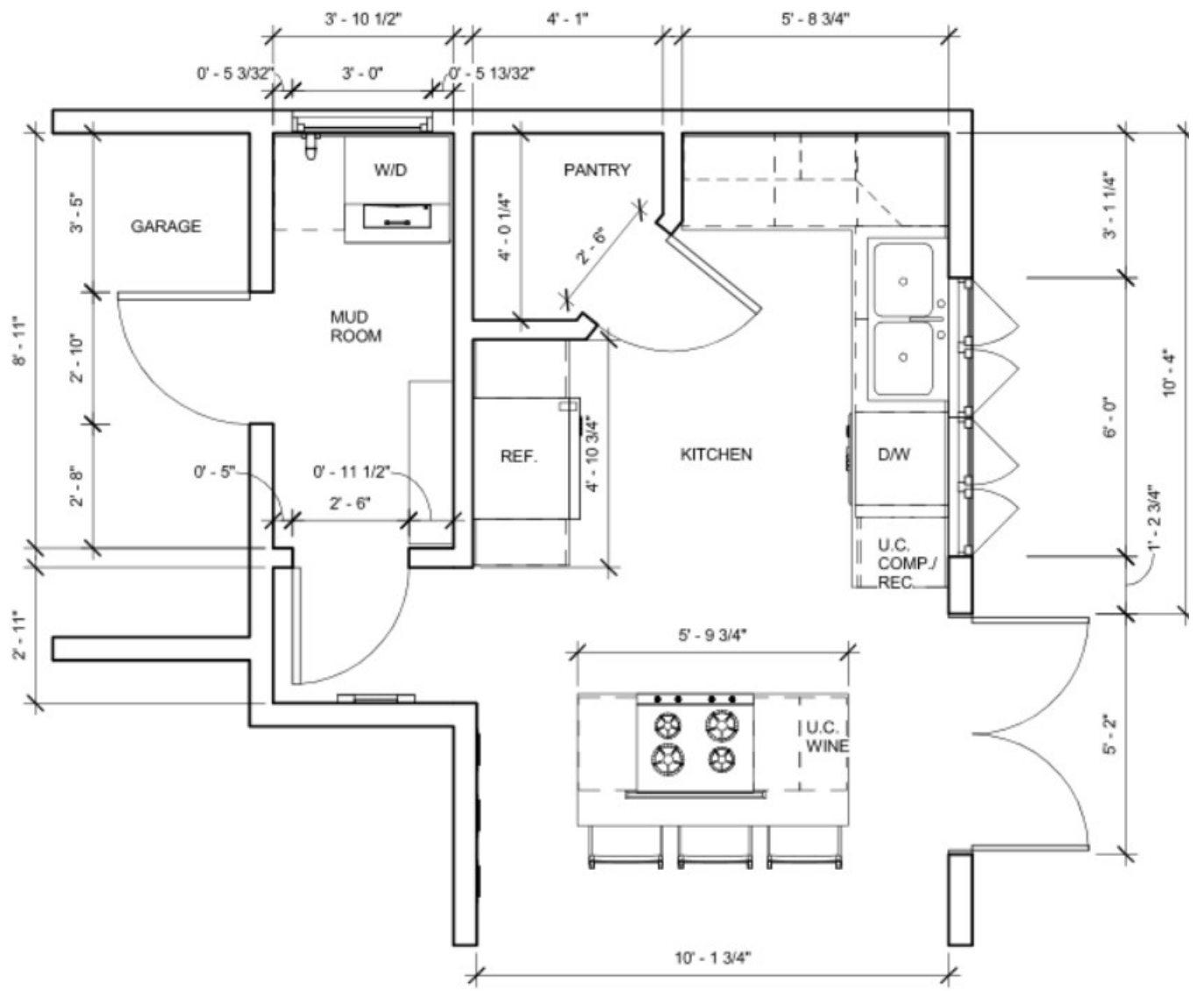
Solution:

The design included removing/altering several existing walls to create an open-concept floor plan between the kitchen and living room, as well as separating the pantry from the entryway to the garage, allowing for a laundry room/mud room to exist. Large french doors open to the back patio, which is integrated into the kitchen by use of folding glass windows above the sink area.

BEFORE



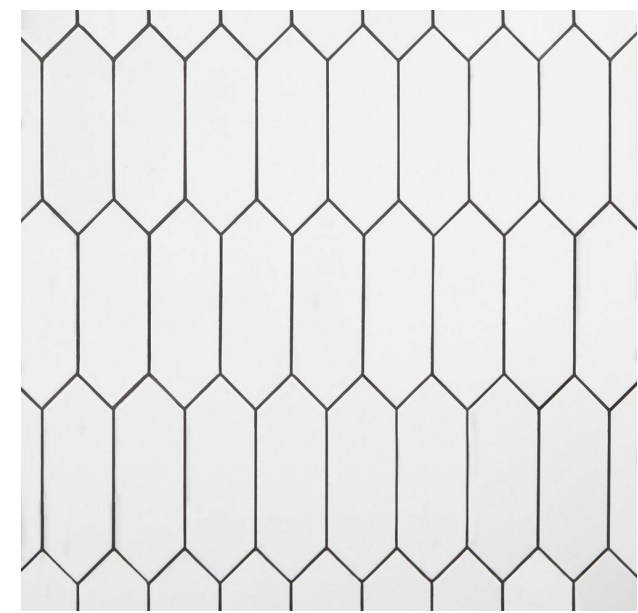
AFTER



DIMENSION FLOOR PLAN

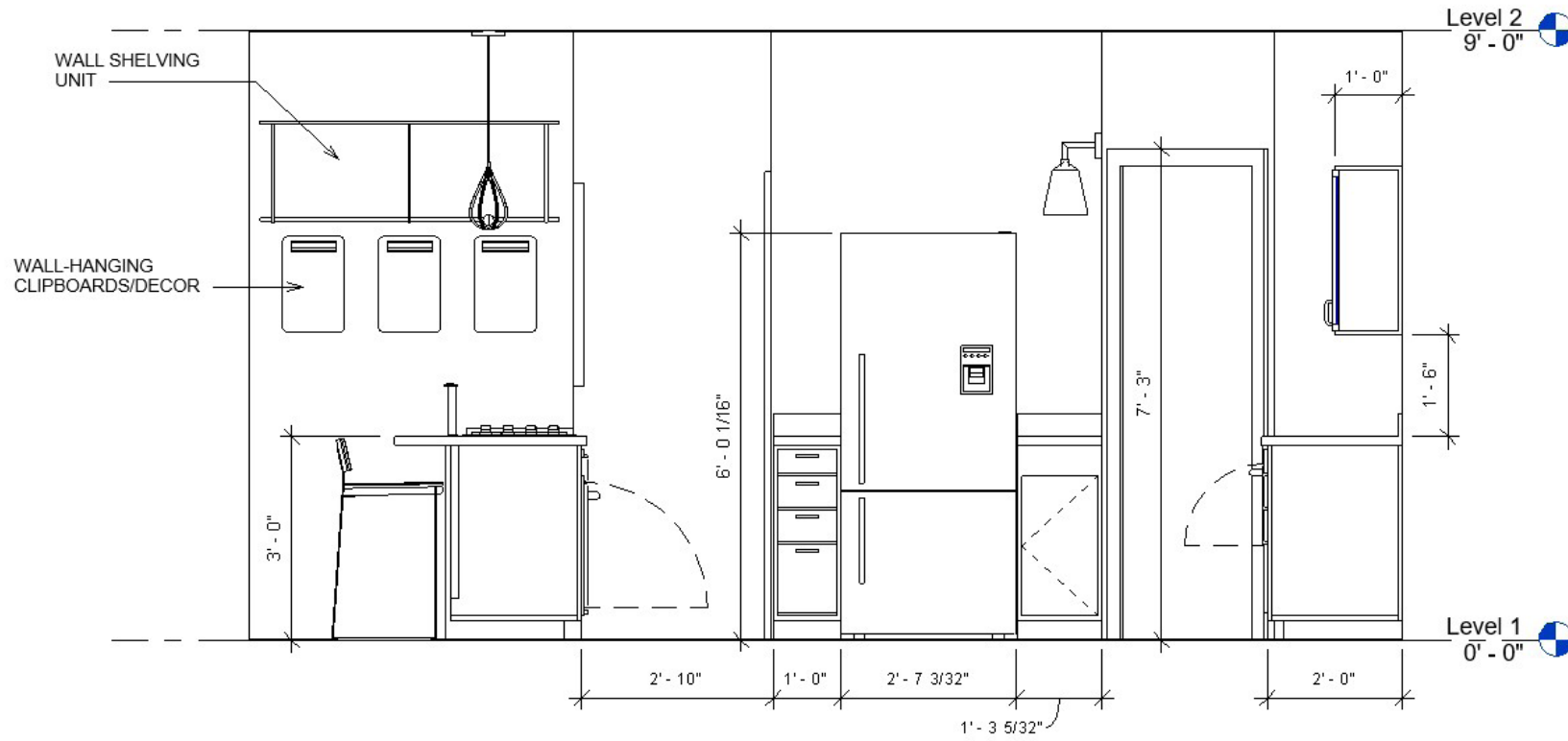
SCALE 1/4"=1'-0"

Produced in Autodesk Revit
Labeled at original scale

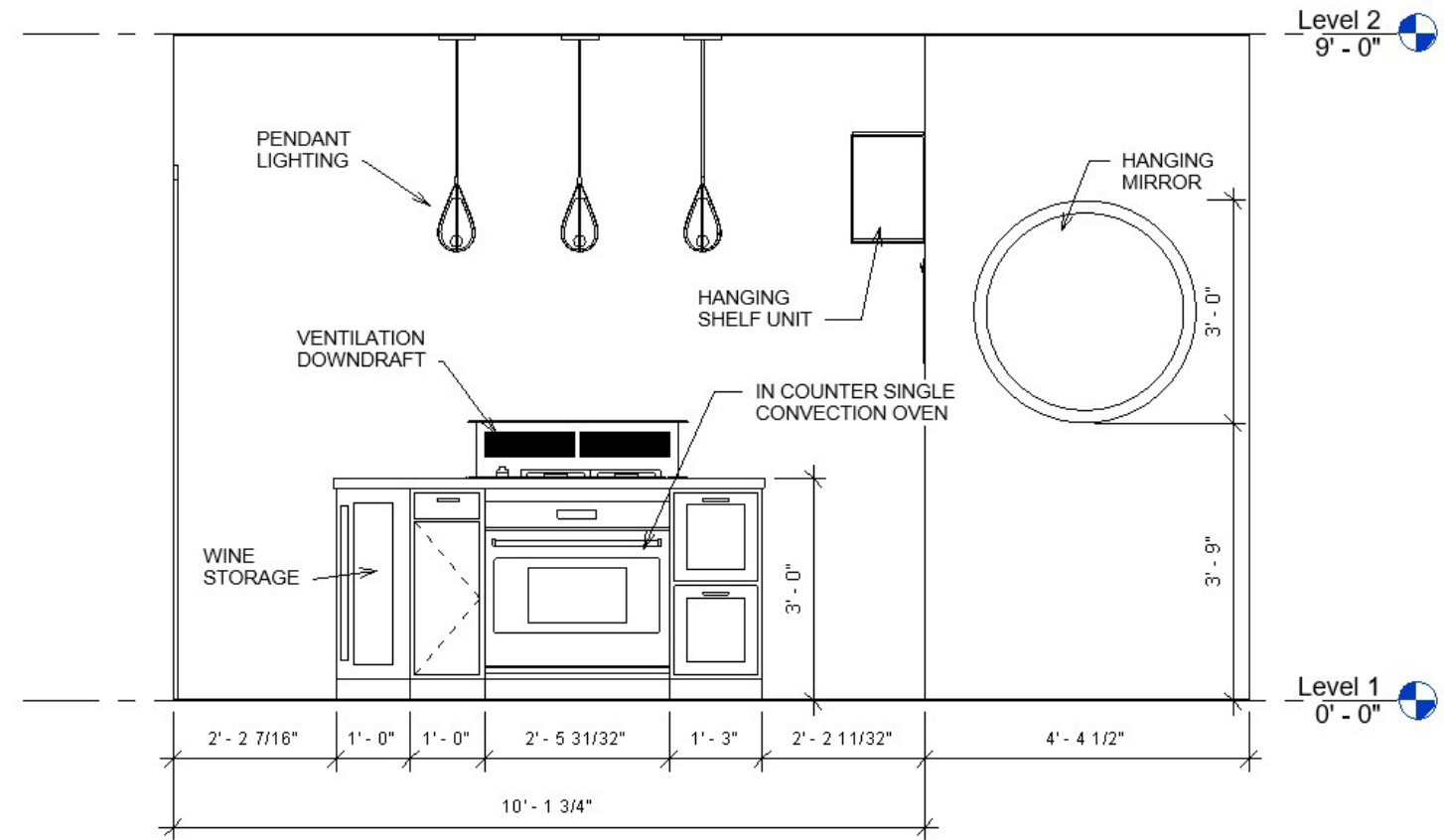


FINISHES & materials

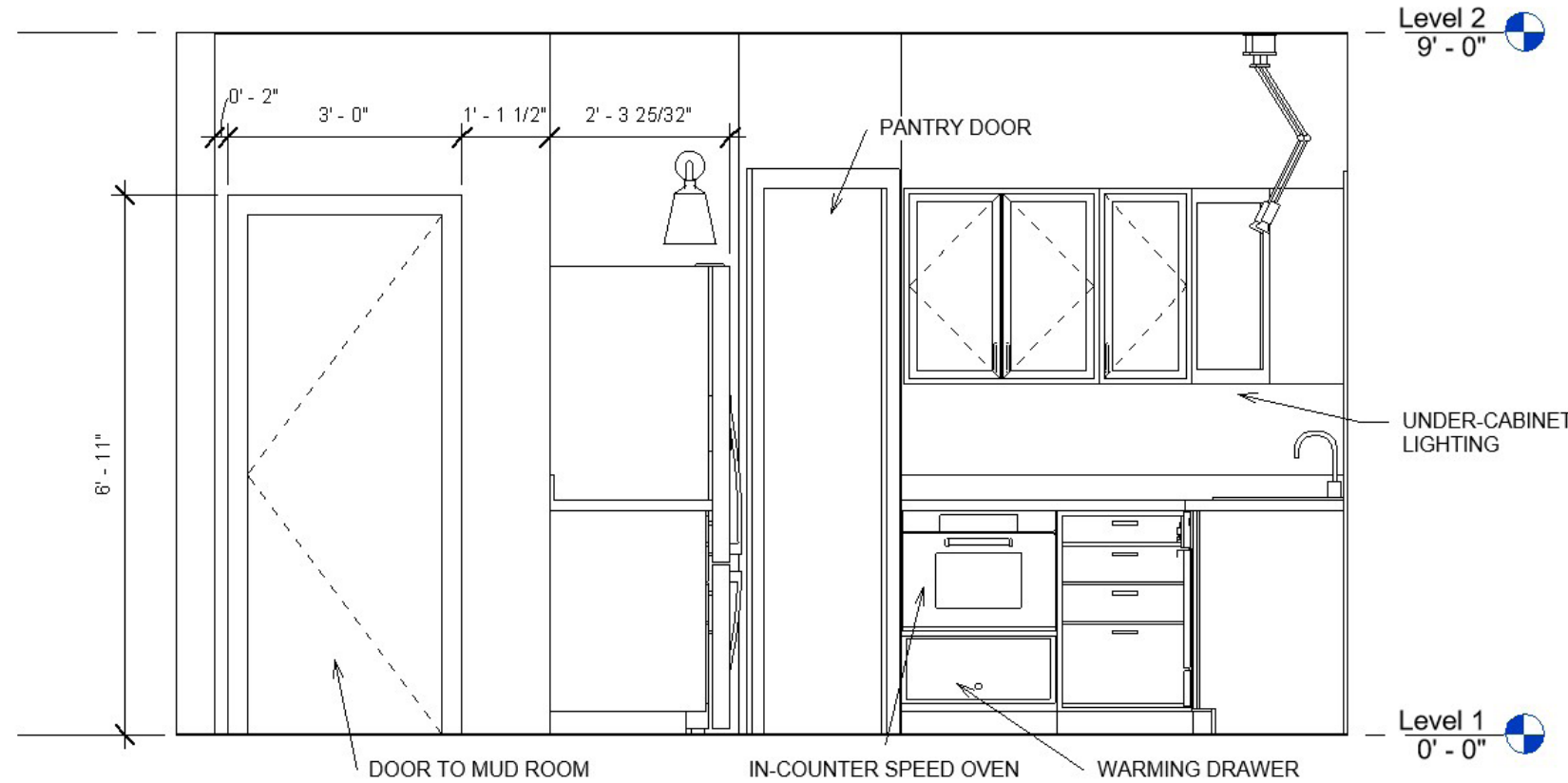




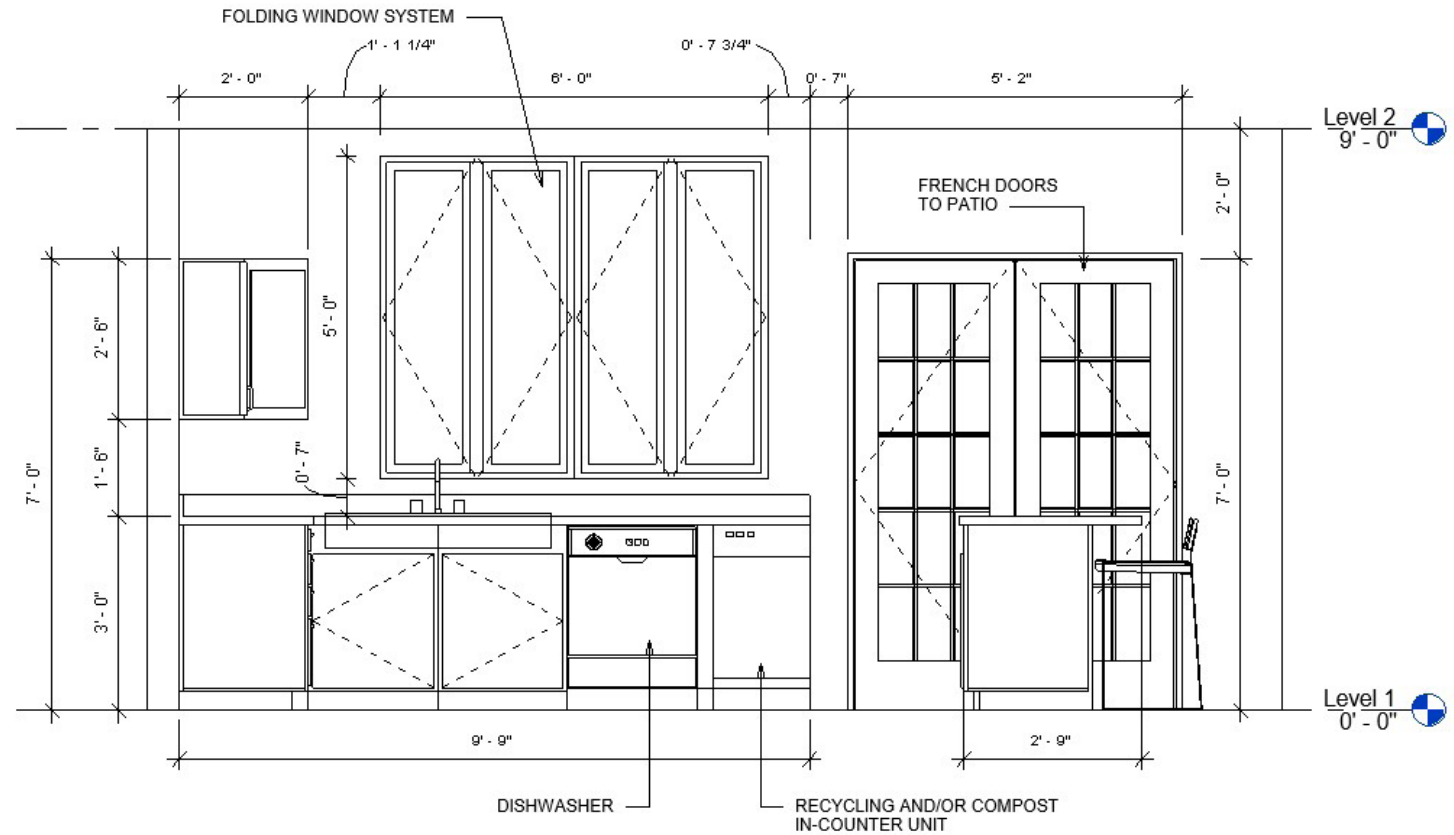
② Kitchen Elevation - West
1/2" = 1'-0"



④ Kitchen Elevation - South
1/2" = 1'-0"

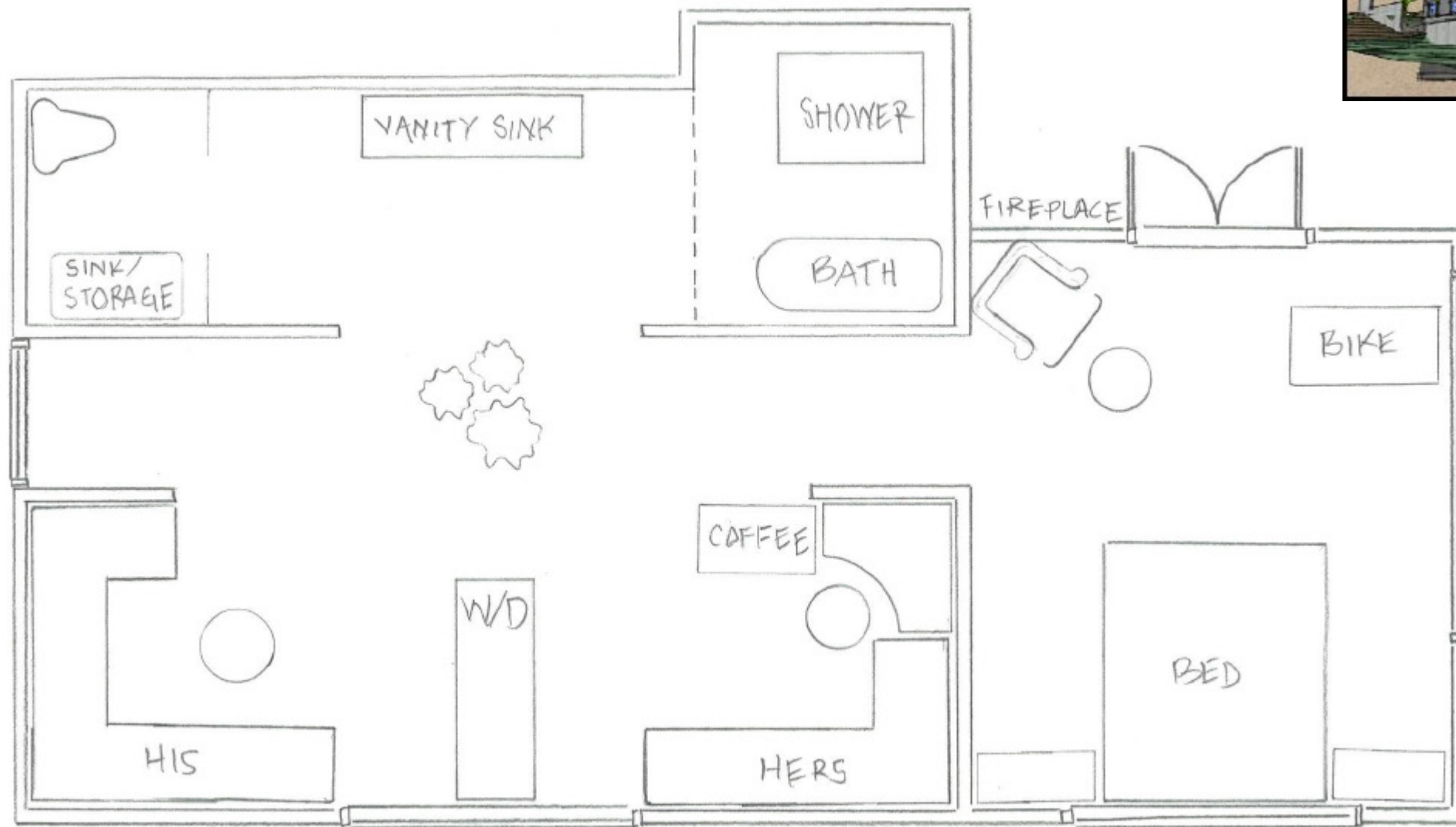
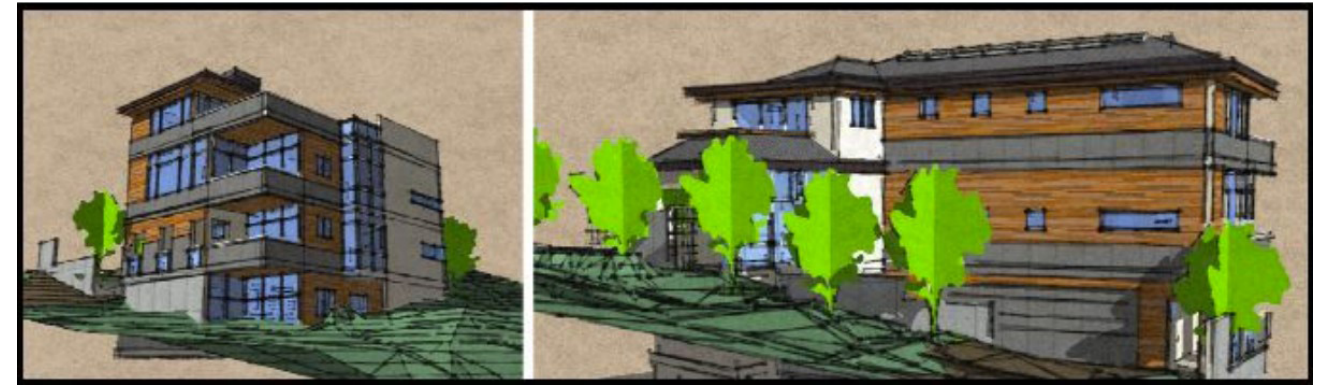


③ Kitchen Elevation - North
1/2" = 1'-0"



① Kitchen Elevation - East
1/2" = 1'-0"

BELVEDIERE MASTER SUITE



Objective:

The client relocated from the East Coast to the desirable Belvidere neighborhood in West Seattle, Washington. The home had sweeping views of the mountains, bay, and Downtown Seattle. The client wanted to bring aspects of their natural surroundings into their master suite, while also intertwining their styles, comfort and functionality.

Solution:

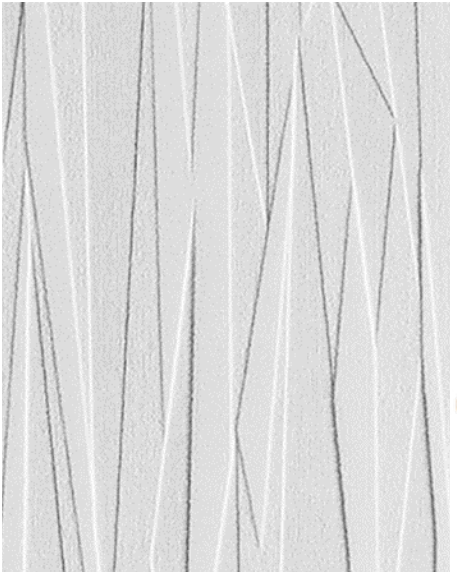
The design included polished cement and marble flooring, high quality materials throughout, ceiling windows above the entire hallway, and large windows to allow for views of the nearby mountains.

FURNITURE FLOOR PLAN

SCALE 1/4" = 1' - 0"

Produced in pen & ink
Labeled at original scale





FINISHES & materials



VIBEO RECORDING STUDIO

Objective:

Create a commercial office space within existing property unit. Must accommodate at least 12 employees and private offices.

Solution:

Designed a professional record label and recording studio, including an indoor atrium for lounging. Fully functioning recording studio includes private booths and instrument storage space, as well as separate entry for ease-of-use. Reception area features a coffee bar and large custom Lumicor room divider.



Produced in Autodesk Revit
Labeled at original scale

FURNITURE FLOOR PLAN

SCALE 1/4" = 1' - 0"



SHELLEY HOME & PARK

