



United States  
Department of  
Agriculture

## Stutsman County, North Dakota

### Farm 9974

**S13 T139N R63W**  
**2017 Program Year**

Map Created March 13, 2017



0 315 630 1,260  
Feet

#### Unless Otherwise Noted:

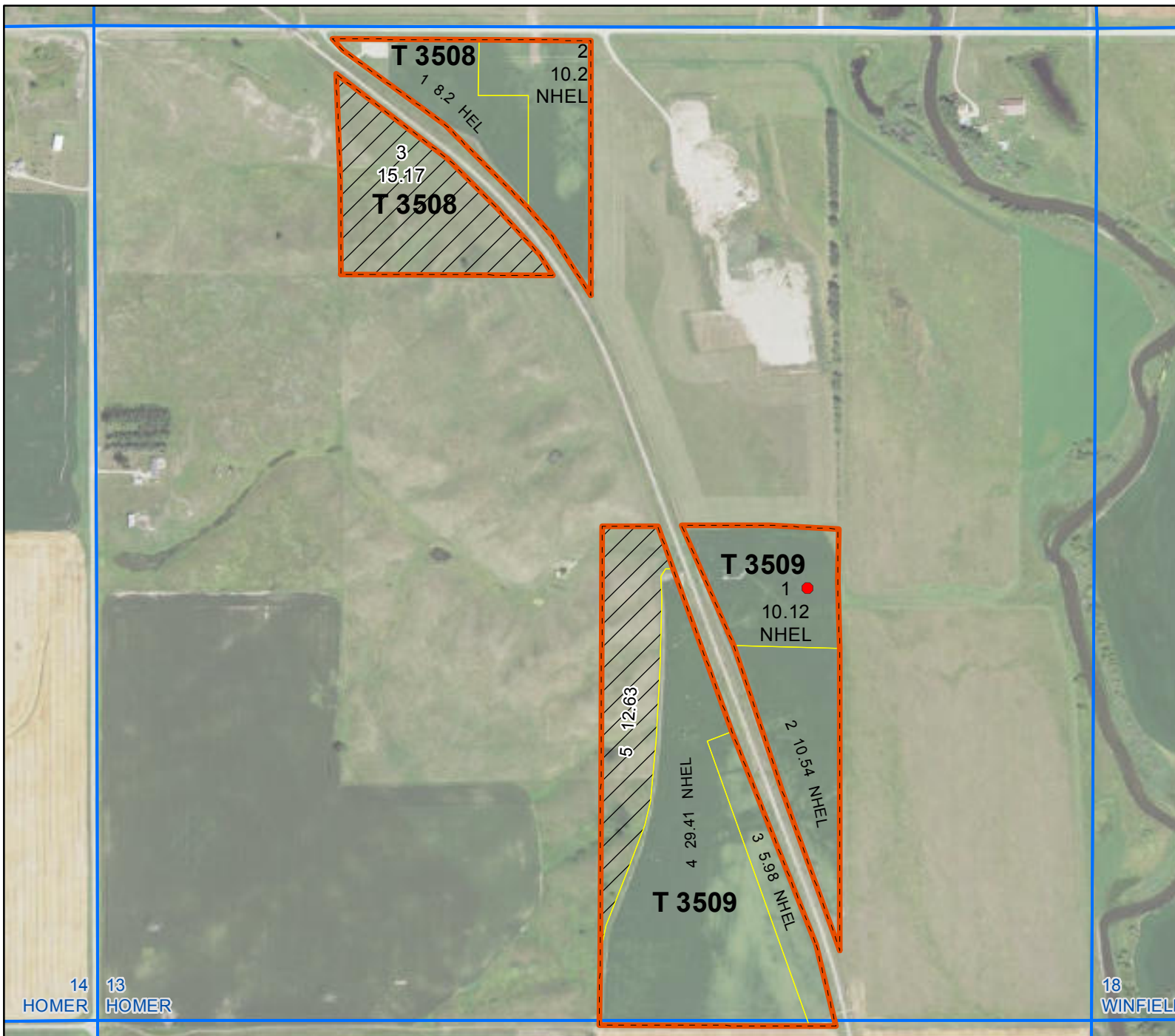
Alfalfa = for Forage  
Barley = Spring for Grain  
Canola = Spring for Processing  
Corn = Yellow for Grain  
Flax = Common for Grain  
Grass = GMA for Grazing  
Mixed Forage = IGS for Grazing  
Oats = Spring for Grain  
Soybeans = Common for Grain  
Sunflowers = Oil for Grain  
Wheat = Spring for Grain  
All fields are non-irrigated  
Shares are 100% to operator

#### Common Land Unit

- Tract Boundary
- Non-Cropland
- Cropland
- PLSS

#### Wetland Determination Identifiers

- Restricted Use
- Limited Restrictions
- Exempt from Conservation Compliance Provisions

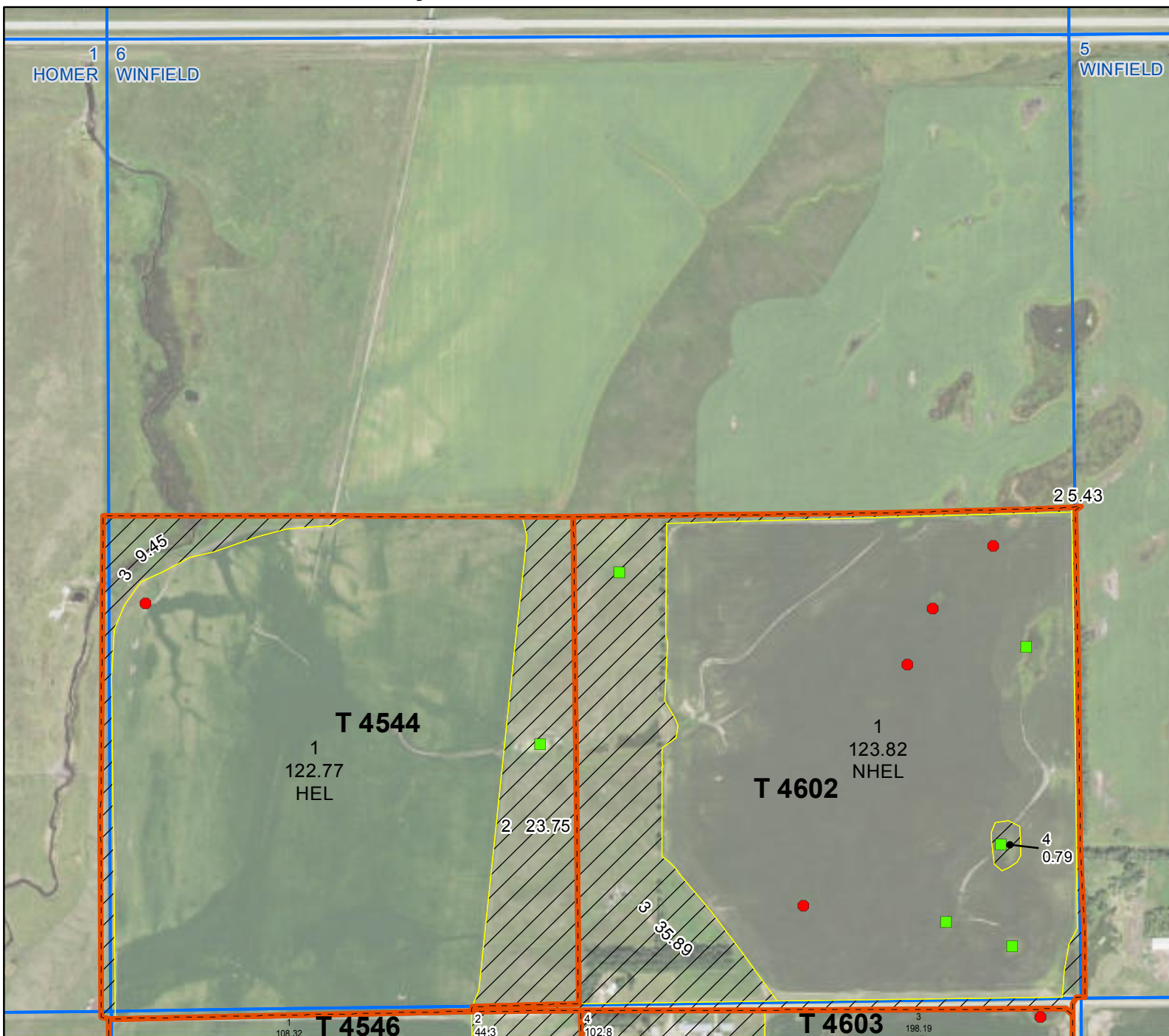


United States Department of Agriculture (USDA) Farm Service Agency (FSA) maps are for FSA Program administration only. This map does not represent a legal survey or reflect actual ownership; rather it depicts the information provided directly from the producer and/or National Agricultural Imagery Program (NAIP) imagery. The producer accepts the data 'as is' and assumes all risks associated with its use. USDA-FSA assumes no responsibility for actual or consequential damage incurred as a result of any user's reliance on this data outside FSA Programs. Wetland identifiers do not represent the size, shape, or specific determination of the area. Refer to your original determination (CPA-026 and attached maps) for exact boundaries and determinations or contact USDA Natural Resources Conservation Service (NRCS). **The imagery displayed on this map was collected in calendar year 2016.**



United States  
Department of  
Agriculture

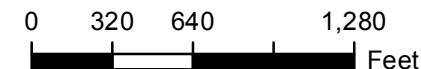
## Stutsman County, North Dakota



### Farm 9974

**S6 T139N R62W**  
**2017 Program Year**

Map Created March 13, 2017



#### Unless Otherwise Noted:

- Alfalfa = for Forage
- Barley = Spring for Grain
- Canola = Spring for Processing
- Corn = Yellow for Grain
- Flax = Common for Grain
- Grass = GMA for Grazing
- Mixed Forage = IGS for Grazing
- Oats = Spring for Grain
- Soybeans = Common for Grain
- Sunflowers = Oil for Grain
- Wheat = Spring for Grain
- All fields are non-irrigated
- Shares are 100% to operator

#### Common Land Unit

- Tract Boundary
- Non-Cropland
- Cropland
- PLSS

#### Wetland Determination Identifiers

- Restricted Use
- Limited Restrictions
- Exempt from Conservation Compliance Provisions

United States Department of Agriculture (USDA) Farm Service Agency (FSA) maps are for FSA Program administration only. This map does not represent a legal survey or reflect actual ownership; rather it depicts the information provided directly from the producer and/or National Agricultural Imagery Program (NAIP) imagery. The producer accepts the data 'as is' and assumes all risks associated with its use. USDA-FSA assumes no responsibility for actual or consequential damage incurred as a result of any user's reliance on this data outside FSA Programs. Wetland identifiers do not represent the size, shape, or specific determination of the area. Refer to your original determination (CPA-026 and attached maps) for exact boundaries and determinations or contact USDA Natural Resources Conservation Service (NRCS). **The imagery displayed on this map was collected in calendar year 2016.**





United States  
Department of  
Agriculture

## Stutsman County, North Dakota

### Farm 9974

**S7 T139N R62W**  
**2017 Program Year**

Map Created March 13, 2017



0 325 650 1,300  
Feet

#### Unless Otherwise Noted:

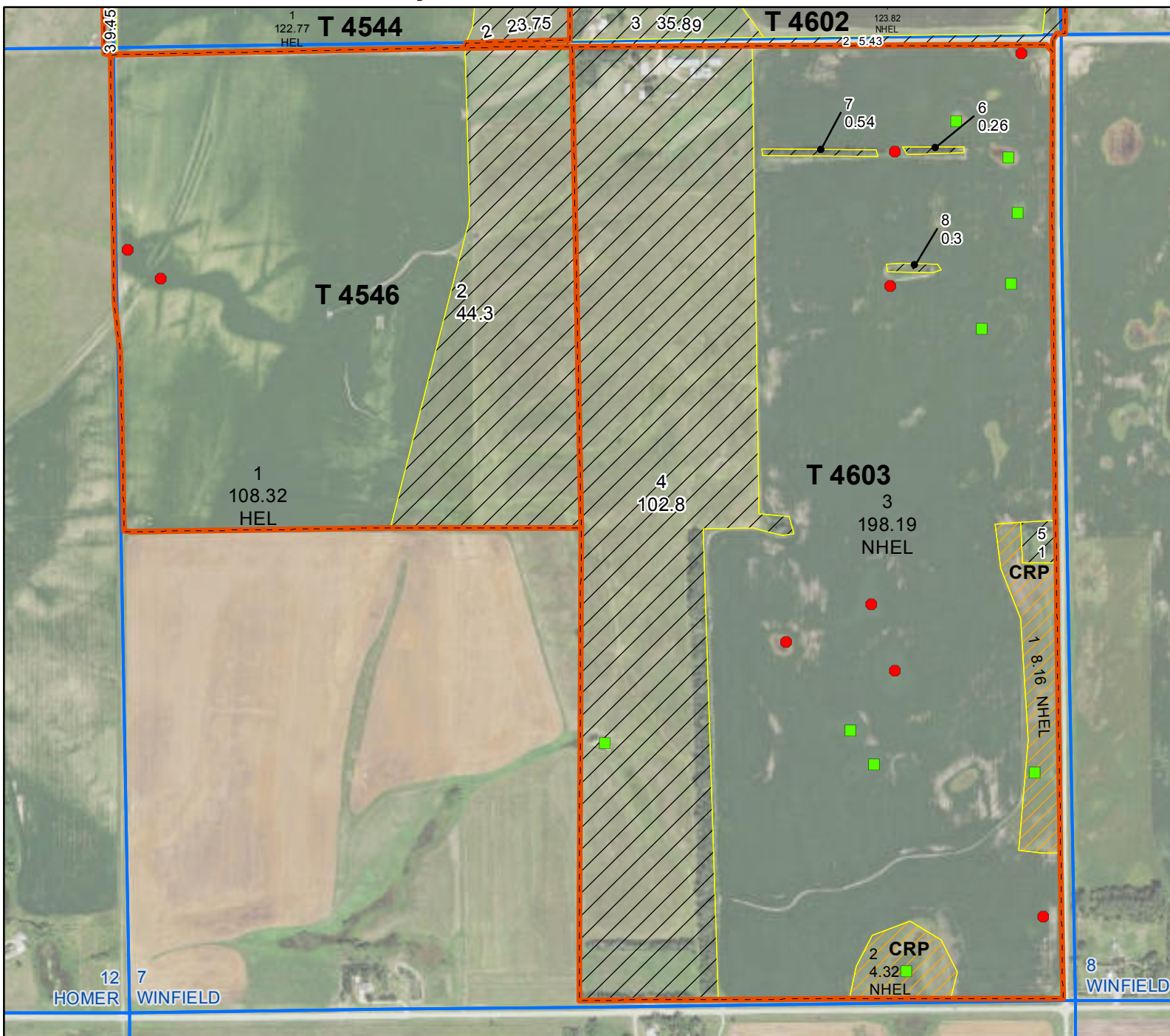
- Alfalfa = for Forage
- Barley = Spring for Grain
- Canola = Spring for Processing
- Corn = Yellow for Grain
- Flax = Common for Grain
- Grass = GMA for Grazing
- Mixed Forage = IGS for Grazing
- Oats = Spring for Grain
- Soybeans = Common for Grain
- Sunflowers = Oil for Grain
- Wheat = Spring for Grain
- All fields are non-irrigated
- Shares are 100% to operator

#### Common Land Unit

- Tract Boundary
- Non-Cropland
- Cropland
- CRP
- PLSS

#### Wetland Determination Identifiers

- Restricted Use
- Limited Restrictions
- Exempt from Conservation Compliance Provisions



United States Department of Agriculture (USDA) Farm Service Agency (FSA) maps are for FSA Program administration only. This map does not represent a legal survey or reflect actual ownership; rather it depicts the information provided directly from the producer and/or National Agricultural Imagery Program (NAIP) imagery. The producer accepts the data 'as is' and assumes all risks associated with its use. USDA-FSA assumes no responsibility for actual or consequential damage incurred as a result of any user's reliance on this data outside FSA Programs. Wetland identifiers do not represent the size, shape, or specific determination of the area. Refer to your original determination (CPA-026 and attached maps) for exact boundaries and determinations or contact USDA Natural Resources Conservation Service (NRCS). **The imagery displayed on this map was collected in calendar year 2016.**