

*In the center
of the Flint Hills*

**TS HEREFORDS &
QUARTER HORSES**

Cottonwood Falls, Kansas



Saturday, February 25, 2023

59th Annual

Sale

*At The
Ranch*

Welcome Everyone to Our 59th Annual Production Sale!

For over half a century, we've strived to develop quality Herefords & Quarter Horses for the commercial cattlemen and women. It's important now, more than ever, to invest wisely in genetics that will add to your bottom line. As we've seen this past fall, calf prices continue to reward the commercial cattleman, especially the premiums that are paid for the black baldie replacement female.

Our Hereford bulls are all backed by the most productive females in the cattle business...the Line 1 cow. Our bulls are packed with maternal performance that will sire replacement females that are easy fleshing, strong milkers, fertile, and possess good udders. We have utilized various outcross sires to maximize performance which equals profitability in today's cow-calf climate.

Our Quarter Horse program is based around developing young prospects that will make excellent working ranch horses. These horses are bred to be very athletic, have excellent dispositions, stout and sound conformation, and have tremendous cow-sense. To round out the package, we strive to breed for color and style.

Our cattle and horses are developed for the real world by year round grazing in the Flint Hills, and are supplemented in the winter months. It is our pleasure to once again have JC Cattle Co., Dwight, KS, participating in the bull sale with their offering. In what has become tradition, we are also pleased to feature commercial females from some of our past bull customers.

We welcome visitors anytime, and if we can ever be of assistance, please let us know. We look forward to seeing you sale day!

Wes and Richell Bailey
(620) 583-4172 (mobile)



Find us on Facebook at [Facebook.com/TSHerefords](https://www.facebook.com/TSHerefords)

TS HEREFORDS & QUARTER HORSES

59th Annual Sale

Saturday, February 25, 2023 • 12:30 p.m.

At the Ranch

1764 Norton Creek Rd. • Cottonwood Falls, KS

Sale location

**5 miles south, 1/2 mile east and 1/2 mile south of
Cottonwood Falls**

Sale Day Contacts

Wes & Richell Bailey	(620) 583-4172
Marcia Bailey	(620) 583-3351
Cindy Brown	(785) 761-8994
Jason Brown	(785) 223-7684

Sale Staff

Justin B. Stout, Auctioneer	(913) 645-5136
Doug Paul, <i>The Stock Exchange</i>	(405) 820-3982
Joe Rickabaugh, <i>Hereford World</i>	(785) 633-3188
Tim Lackey, <i>Kansas Stockman</i>	(660) 676-2193
Tom Granzow, <i>Kansas Hereford Assn.</i>	(785) 466-6790

A complimentary lunch will be served at 11:30 a.m.

**Videos on all of the bulls and horses selling can be viewed on
DVAuction.com or on [Facebook.com/TSHerefords](https://www.facebook.com/TSHerefords)**

Photography by Lori Brown & Richell Bailey.

Sale Broadcast Live on

DVAuction

All lots sell under the suggested Terms and Conditions of the American Hereford Association. All persons attending the sale do so at their own risk. The owners or sale staff assumes no liability, for property loss or accidents that may occur.

AQHA Transfer

Certificate transfers will be made by the seller, but cost will be added to purchase price when making settlement. Costs set by AQHA are \$40.00 for current members, and \$105.00 for non-members. All horses will have Coggins and health papers. Colts have been microchipped and is listed on their registration. All colts will be transferred to buyer upon completion of sale.



Performance Information

Certificate transfers will be made by the seller, but cost of \$5.00 will be added to purchase price when making settlement.

TS BULLS

As yearlings, TS bulls are weighed and turned out on native pasture with free choice mineral/salt all summer. In October, they are developed on a silage/hay/corn ration, but still run on pasture until sale time. They are ready to go to work. Bulls have been dewormed, vaccinated with a 5 way viral vaccine (IBR, BVD, BVD type 2, PI3, BRSV), 7 way blackleg with somnus, and vibrio-lepto 5. BVD- PI tested, semen and trich tested within 30 days of sale date.

JC BULLS

JC bulls have been wormed and vaccinated with 7-way Black Leg/with Haemophilus; Micro Plasma; Bova Shield 5; semen and Trich tested. Bulls will be accompanied with health papers.

HEIFERS

TS Ranch heifers have been dewormed, calthood vaccinated, 7 way blackleg with somnus, 5 way viral vaccine and vibrio-lepto 5. BVD-PI testing has been done. All bred heifers will be pregnancy tested.

Hereford Breed Average EPD's

CE	BW	WW	YW	MM	M&G	MCE	SC	FAT	REA	MARB
2.2	3.0	51	83	23	49	1.8	0.9	0.010	0.36	0.09

Calving Ease Direct (CE)

CE EPDs are based on calving ease scores and birth weights. More positive EPDs are favorable and indicate easier calving.

Birth Weight (BW)

Birth weight is an indicator of calving ease. Larger BW EPDs usually, but not always, indicate more calving difficulty.

Weaning Weight (WW)

WW EPD reflects pre-weaning growth.

Yearling Weight (YW)

YW EPD reflects differences in the 365-day adjusted yearling weight for progeny. It is the best estimate of total growth.

Maternal Milk (MM)

The milking ability of a sire's daughters is expressed in pounds of calf weaned.

Maternal Milk & Growth (M&G)

M&G reflects what the sire is expected to transmit to his daughters for a combination of growth genetics through weaning and milking ability.

Calving Ease Maternal (MCE)

Indicates how easily a sire's daughters will calve at 2 years of age.

Scrotal Circumference (SC)

SC EPD is the best estimate of fertility. It's reflected to the bull's own semen quantity and quality.

Rib Fat (FAT)

Sires with low FAT EPDs are expected to produce leaner progeny.

Ribeye Area (REA)

Sires with relatively higher REA EPDs are expected to produce better-muscled and higher percentage yielding slaughter progeny.

Marbling (MARB)

Breeding cattle with higher MARB EPDs should produce slaughter progeny with a higher degree of IMF and quality grades.

HEREFORD REFERENCE SIRES

A CHURCHILL SPIRIT 185Y

43184047 — Calved: January 25, 2011 — Tattoo: RE 185

GOLDEN-OAK FUSION 3S
GOLDEN OAK OUTCROSS 18U
 P42963135

GOLDEN-OAK 60D MALLORY 15M

GOLDEN-OAK 4J MAXUM 28M
 NCX MISS JR NELLIE 528N
 RU DUSTER 60D
 GOLDEN-OAK P183 GLORIA 25G

GH RAMBO 279R
CHURCHILL LADY 7202T ET
 42856776 CL 1 DOMINETTE 301N

GH NEON 17N
 HR GOLD DOMINO 251E
 CL 1 DOMINO 9126J 1ET
 CL 1 DOMINETTE 8184H

CE	BW	WW	YW	MM	M&G	MCE	SC	FAT	REA	MARB
6.3	1.9	52	100	39	65	8.8	1.2	0.031	0.78	-0.06

B NICHOLS 352 VICTOR 513Z

43610170 — Calved: March 25, 2015 — Tattoo: RE 513Z

TH 122 711 VICTOR 719T
NICHOLS VICTOR 35Z
 43395133 NICHOLS 3147 LADY 1154 ET

DRF JWR PRINCE VICTOR 711
 KBCR 19D DOMINETTE 122
 MH MONUMENT 3147
 ER L1 DOMINETTE N224

CHURCHILL SENSATION 028X
NICHOLS LADY 31
 43395130 NICHOLS LADY 1131

UPS DOMINO 3027
 CHURCHILL LADY 7202T ET
 NICHOLS TORNADO 8090
 UPS MISS DOMINO 6366

CE	BW	WW	YW	MM	M&G	MCE	SC	FAT	REA	MARB
12.8	0.2	57	92	28	56	4.0	1.3	0.031	0.31	0.00

C CK MR ON TARGET J103

42827294 — Calved: February 7, 2007 — Tattoo: RE J103

CL1DOMINO 9126J
UPS DOMINO 3027
 42426386 UPS MISS DIAMOND 1353

HH ADVANCE 767G
 CL 1 DOMINETTE 490
 SH DIAMOND 881
 UPS MS MILEHIGH 8330

MARK DOMINO 819
CK MS DONALD B0077
 42190939 CK MS MONTANA 5056

NX MARK CLASS 4411
 MCR PMH DOMINET 53
 F MR POWER 217
 CK PRIMETTE 9240

CE	BW	WW	YW	MM	M&G	MCE	SC	FAT	REA	MARB
7.8	1.8	40	65	27	47	1.8	0.7	0.011	0.30	0.33

D APH EASY COMPANY F124 ET

43965648 — Calved: March 8, 2018 — Tattoo: RE F124

SHF RIB EYE M326 R117
NJW 98S R117 RIBEYE 88X ET
 43094146 NJW 9126J DEW DOMINO 98S

KCF BENNETT 3008 M326
 HVH MISS HUDSON 83K 8M
 CL 1 DOMINO 9126J 1ET
 NJW 57G DEW 5M

NJW 73S M326 TRUST 100W ET
ASM 705 100W MISS ABIGAIL 303A
 P43400504 ASM 122L MISS 705ET

KCF BENNETT 3008 M326
 NJW P606 72N DAYDREAM 73S
 REMITALL ONLINE 122L
 KSU MISS 6052F 308 ET

CE	BW	WW	YW	MM	M&G	MCE	SC	FAT	REA	MARB
10.5	.3	48	76	30	54	5.8	0.9	-0.022	0.39	0.23

HEREFORD BULLS



1 TS VIC 5132 1825 2152

44286897 — Calved: March 15, 2021 — Tattoo: RE 2152

NICHOLS VICTOR 352
NICHOLS 352 VICTOR 5132
 43610170 NICHOLS LADY 31

TH 122 71VICTOR719T
 NICHOLS 3147 LADY 1154 ET
 CHURCHILL SENSATION 028X
 NICHOLS LADY 1131

CK MR ON TARGET J103
MISS TS J103 0914
 43929188 MISS 5145180914W

UPS DOMINO 3027
 CK MS DONALD B0077
 EE 484 332514
 TS LADY EXPLOSION ADV 518

CE	BW	WW	YW	MM	M&G	MCE	SC	FAT	REA	MARB	Act BW	Act WW	Act YW
9.0	1.3	46	75	23	46	4.3	1.0	0.008	0.19	0.08	59	565	770

2 TS F124 1902 2125

44286872 — Calved: February 20, 2021 — Tattoo: RE 2125

NJW 98S R117 RIBEYE 88X ET
APH EASY COMPANY F124 ET
 43965648 ASM 705 100W MISS ABIGAIL 303A

SHF RIB EYE M326 R117
 NJW 9126J DEW DOMINO 98S
 NJW 73S M326 TRUST 100W ET
 ASM 122L MISS 705ET

CHURCHILL SPIRIT 185Y
MISS TS SPIRIT 1425 1902
 44043564 MISS TS J103 EXP 1425

GOLDEN OAK OUTCROSS 18U
 CHURCHILL LADY 7202 ET
 CK MR ON TARGET J103
 LADY 0623 DIAMOND 1048

CE	BW	WW	YW	MM	M&G	MCE	SC	FAT	REA	MARB	Act BW	Act WW	Act YW
8.0	1.1	45	79	28	51	6.1	0.9	-0.002	0.51	0.18	43	505	760



HEREFORD BULLS



3 TS J103 1010 2155

44286844 — Calved: March 22, 2021 — Tattoo: RE 2155

UPS DOMINO 3027
CK MR ON TARGET J103
 42827294 CK MS DONALD B0077

CL 1 DOMINO 9126J 1ET
 UPS MISS DIAMOND 1353
 MARK DOMINO 819
 CK MS MONTANA 5056

TS HARLAND EXPLOSION 0736
MISS HARLAND DOM 1010
 43105291 TS 411 447 0801

CJH HARLAND 408
 MISS TS DOMINETTE 4
 MCR 552 GOLD DOMINO 411 ET
 TS LADY EXPLOSION 447

CE	BW	WW	YW	MM	M&G	MCE	SC	FAT	REA	MARB	Act BW	Act WW	Act YW
5.1	3.1	45	72	23	45	2.3	0.7	0.008	0.21	0.20	67	570	805



4 FTS J103 1813 2118

44286926 — Calved: February 20, 2021 — Tattoo: RE 2118

UPS DOMINO 3027
CK MR ON TARGET J103
 42827294 CK MS DONALD B0077

CL 1 DOMINO 9126J 1ET
 UPS MISS DIAMOND 1353
 MARK DOMINO 819
 CK MS MONTANA 5056

CHURCHILL SPIRIT 185Y
MISS TS 185Y 1530 1813
 43929177 MISS TS J103 0929 1530

GOLDEN OAK OUTCROSS 18U
 CHURCHILL LADY 7202T ET
 CK MR ON TARGET J103
 MISS 514 520 0929W

CE	BW	WW	YW	MM	M&G	MCE	SC	FAT	REA	MARB	Act BW	Act WW	Act YW
8.0	1.3	38	65	26	45	4.1	0.8	0.018	0.36	0.25	64	590	750

HEREFORD BULLS

5 TS J103 1553 2142

44286888 — Calved: March 1, 2021 — Tattoo: RE 2142

UPS DOMINO 3027
CK MR ON TARGET J103
 42827294 CK MS DONALD B0077

CL 1 DOMINO 9126J 1ET
 UPS MISS DIAMOND 1353
 MARK DOMINO 819
 CK MS MONTANA 5056

JLB W26 ADVANCE 1190
MISS TS W26 ADV 1139 1553
 43621796 MISS TS 0623 APACHE 1139

GO LARRY W26
 K&B MS 6067 EXCEL 9179W
 EE 0024 8114 5315
 RAFTER O APACHE ROSEBUD 319N

CE	BW	WW	YW	MM	M&G	MCE	SC	FAT	REA	MARB	Act BW	Act WW	Act YW
6.2	2.0	42	65	26	47	3.8	0.8	-0.002	0.32	0.24	60	605	755

6 TS VIC 5132 1753 2130

44286876 — Calved: February 28, 2021 — Tattoo: RE 2130

NICHOLS VICTOR 352
NICHOLS 352 VICTOR 5132
 43610170 NICHOLS LADY 31

TH 122 711 VICTOR 719T
 NICHOLS 3147 LADY 1154 ET
 CHURCHILL SENSATION 028X
 NICHOLS LADY 1131

CHURCHILL SPIRIT 185Y
MISS TS SPIRIT 1127 1753
 43834427 MISS TS 0736 EE 1127

GOLDEN OAK OUTCROSS 18U
 CHURCHILL LADY 7202T ET
 TS HARLAND EXPLOSION 0736
 MISS 5315 415 0910W

CE	BW	WW	YW	MM	M&G	MCE	SC	FAT	REA	MARB	Act BW	Act WW	Act YW
7.9	2.0	55	93	25	53	4.6	1.2	0.018	0.41	-0.01	58	660	900

7 COMMERCIAL BULL

00000000 — Calved: February 21, 2020 — Tattoo: RE 2121

UPS DOMINO 3027
CK MR ON TARGET J103
 42827294 CK MS DONALD B0077

CL 1 DOMINO 9126J 1ET
 UPS MISS DIAMOND 1353
 MARK DOMINO 819
 CK MS MONTANA 5056

HARLAND BREEDING

CE	BW	WW	YW	MM	M&G	MCE	SC	FAT	REA	MARB	Act BW	Act WW	Act YW
											65	570	815

8 TS J103 164 2107

44394360 — Calved: February 18, 2021 — Tattoo: RE 2107

UPS DOMINO 3027
CK MR ON TARGET J103
 42827294 CK MS DONALD B0077

CL 1 DOMINO 9126J 1ET
 UPS MISS DIAMOND 1353
 MARK DOMINO 819
 CK MS MONTANA 5056

TS HARLAND EXPLOSION 0736
MISS 1608S TS HARLAND 164
 43713316 LADY FLINT DALLAS 5

CJH HARLAND 408
 MISS TS DOMINETTE 4
 CK DALLAS 4039
 LF DOMINETTE 7212

CE	BW	WW	YW	MM	M&G	MCE	SC	FAT	REA	MARB	Act BW	Act WW	Act YW
5.4	3.1	41	67	20	41	3.7	0.7	0.008	0.17	0.21	53	590	805

HEREFORD BULLS

9

TS J103 1317 2141

44286887 — Calved: March 6, 2021 — Tattoo: RE 2141

UPS DOMINO 3027
CK MR ON TARGET J103
 42827294 CK MS DONALD B0077

CL 1 DOMINO 9126J 1ET
 UPS MISS DIAMOND 1353
 MARK DOMINO 819
 CK MS MONTANA 5056

TS HARLAND EXPLOSION 0736
MISS TS HARLAND 0654 1317
 43420035 MISS TS LEGACY 0654

CJH HARLAND 408
 MISS TS DOMINETTE 4
 MCR 552 GOLD DOMINO 411 ET
 TS JR LADY LEGACY 5

CE	BW	WW	YW	MM	M&G	MCE	SC	FAT	REA	MARB	Act BW	Act WW	Act YW
8.5	2.1	41	60	23	43	6.6	0.7	0.008	0.25	0.21	52	660	800

10

TS F124 1956 2139

44286884 — Calved: March 3, 2021 — Tattoo: RE 2139

NJW 98S R117 RIBEYE 88X ET
APH EASY COMPANY F124 ET
 43965648 ASM 705 100W MISS ABIGAIL 303A

SHF RIB EYE M326 R117
 NJW 9126J DEW DOMINO 98S
 NJW 73S M326 TRUST 100W ET
 ASM 122L MISS 705ET

CHURCHILL SPIRIT 185Y
MISS TS SPIRIT 1268 1956
 44043577 MCR J103 GOLD DOMINET 1268

GOLDEN OAK OUTCROSS 18U
 CHURCHILL LADY 7202T ET
 CK MR ON TARGET J103
 MCR L91 DOMINET 687 ET

CE	BW	WW	YW	MM	M&G	MCE	SC	FAT	REA	MARB	Act BW	Act WW	Act YW
6.4	1.5	47	79	32	55	4.7	1.0	-0.012	0.60	0.17	38	560	770

11

TS J103 1270 2154

44286899 — Calved: March 22, 2021 — Tattoo: RE 2154

UPS DOMINO 3027
CK MR ON TARGET J103
 42827294 CK MS DONALD B0077

CL 1 DOMINO 9126J 1ET
 UPS MISS DIAMOND 1353
 MARK DOMINO 819
 CK MS MONTANA 5056

CK MR ON TARGET J103
MISS TS CK J103 687 1270
 42827294 MCR L91 DOMINET 687 ET

UPS DOMINO 3027
 CK MS DONALD B0077
 S PURE GOLD 160A L91
 PPF MCR MARK DOMINET 184

CE	BW	WW	YW	MM	M&G	MCE	SC	FAT	REA	MARB	Act BW	Act WW	Act YW
4.9	2.8	46	72	28	51	-0.2	0.9	-0.002	0.38	0.29	73	635	830

12

TS VIC 5132 1857 2112

44286921 — Calved: February 18, 2021 — Tattoo: RE 2112

NICHOLS VICTOR 352
NICHOLS 352 VICTOR 5132
 43610170 NICHOLS LADY 31

TH 122 711 VICTOR 719T
 NICHOLS 3147 LADY 1154 ET
 CHURCHILL SENSATION 028X
 NICHOLS LADY 1131

NICHOLS 352 VICTOR 5132
TS VIC 5132 1667 1857
 43963296 MISS TS J103 0918 1667

NICHOLS VICTOR 352
 NICHOLS LADY 31
 CK MR ON TARGET J103
 MISS 0623 0664S 0918W

CE	BW	WW	YW	MM	M&G	MCE	SC	FAT	REA	MARB	Act BW	Act WW	Act YW
10.0	0.8	51	78	23	49	2.3	1.1	0.008	0.22	0.03	42	630	755

HEREFORD BULLS

13 TS J103 1823 2128

44286875 — Calved: February 27, 2021 — Tattoo: RE 2128

UPS DOMINO 3027
CK MR ON TARGET J103
 42827294 CK MS DONALD B0077

CL 1 DOMINO 9126J 1ET
 UPS MISS DIAMOND 1353
 MARK DOMINO 819
 CK MS MONTANA 5056

CHURCHILL SPIRIT 185Y
MISS TS 185Y 1415 1823
 43929164 MISS TS J103 EE 1415

GOLDEN OAK OUTCROSS 18U
 CHURCHILL LADY 7202T ET
 CK MR ON TARGET J103
 MISS 5315 415 0910W

CE	BW	WW	YW	MM	M&G	MCE	SC	FAT	REA	MARB	Act BW	Act WW	Act YW
7.1	2.5	46	74	28	51	4.2	0.9	0.008	0.46	0.24	60	655	840

14 TS F124 1930 2165

44286933 — Calved: March 11, 2021 — Tattoo: RE 2165

NJW 98S R117 RIBEYE 88X ET
APH EASY COMPANY F124 ET
 43965648 ASM 705 100W MISS ABIGAIL 303A

SHF RIB EYE M326 R117
 NJW 9126J DEW DOMINO 98S
 NJW 73S M326 TRUST 100W ET
 ASM 122L MISS 705ET

CHURCHILL SPIRIT 185Y
MISS TS SPIRIT 1305 1930
 44043575 MISS TS HARLAND 357 1305

GOLDEN OAK OUTCROSS 18U
 CHURCHILL LADY 7202T ET
 TS HARLAND EXPLOSION 0736
 MISS TS ADV STAR 1

CE	BW	WW	YW	MM	M&G	MCE	SC	FAT	REA	MARB	Act BW	Act WW	Act YW
7.2	2.4	54	92	32	58	5.8	1.0	-0.012	0.56	0.13	55	605	890



15 TS F124 1900 2126

44286873 — Calved: February 23, 2021 — Tattoo: RE 2126

NJW 98S R117 RIBEYE 88X ET
APH EASY COMPANY F124 ET
 43965648 ASM 705 100W MISS ABIGAIL 303A

SHF RIB EYE M326 R117
 NJW 9126J DEW DOMINO 98S
 NJW 73S M326 TRUST 100W ET
 ASM 122L MISS 705ET

CHURCHILL SPIRIT 185Y
MISS TS SPIRIT 1643 1900
 44043544 MISS TS W26 1441 1643

GOLDEN OAK OUTCROSS 18U
 CHURCHILL LADY 7202T ET
 JLB W26 ADVANCE 1190
 MISS TS J103 DOM 1441

CE	BW	WW	YW	MM	M&G	MCE	SC	FAT	REA	MARB	Act BW	Act WW	Act YW
8.0	1.6	53	89	32	58	5.8	1.0	-0.012	0.63	0.18	68	610	855

HEREFORD BULLS

16 TS VIC 5132 1762 2135

44286880 — Calved: March 4, 2021 — Tattoo: RE 2135

NICHOLS VICTOR 352
NICHOLS 352 VICTOR 5132
 43610170 NICHOLS LADY 31

CHURCHILL SPIRIT 185Y
MISS TS J103 0910 1504
 43621819 MISS 0623 APACHE 1139

TH 122 711 VICTOR 719T
 NICHOLS 3147 LADY 1154 ET
 CHURCHILL SENSATION 028X
 NICHOLS LADY 1131

GOLDEN OAK OUTCROSS 18U
 CHURCHILL LADY 7202T ET
 EE 0024 8114 5315
 RAFTER O APACHE ROSEBUD 319N

CE	BW	WW	YW	MM	M&G	MCE	SC	FAT	REA	MARB	Act BW	Act WW	Act YW
8.6	1.1	48	83	27	51	4.8	1.2	0.008	0.39	0.00	45	600	815

17 TS J103 1752 2147

44286894 — Calved: March 10, 2021 — Tattoo: RE 2147

UPS DOMINO 3027
CK MR ON TARGET J103
 42827294 CK MS DONALD B0077

CHURCHILL SPIRIT 185Y
MISS TS SPIRIT 1028 1752
 43834417 MISS HARLAND STEALTH 1028

CL 1 DOMINO 9126J 1ET
 UPS MISS DIAMOND 1353
 MARK DOMINO 819
 CK MS MONTANA 5056

GOLDEN OAK OUTCROSS 18U
 CHURCHILL LADY 7202T ET
 CJH HARLAND 408
 MISS TS JR LEGACY

CE	BW	WW	YW	MM	M&G	MCE	SC	FAT	REA	MARB	Act BW	Act WW	Act YW
8.3	1.5	40	70	27	47	3.3	0.9	0.018	0.34	0.23	65	655	835

18 TS VIC 5132 1818 2146

44286893 — Calved: February 24, 2021 — Tattoo: RE 2146

NICHOLS VICTOR 352
NICHOLS 352 VICTOR 5132
 43610170 NICHOLS LADY 31

CK MR ON TARGET J103
MISS TS J103 1010 1818
 43929136 MISS HARLAND DOM 1010

TH 122 711 VICTOR 719T
 NICHOLS 3147 LADY 1154 ET
 CHURCHILL SENSATION 028X
 NICHOLS LADY 1131

UPS DOMINO 3027
 CK MS DONALD B0077
 TS HARLAND EXPLOSION 0736
 TS 411 447 0801

CE	BW	WW	YW	MM	M&G	MCE	SC	FAT	REA	MARB	Act BW	Act WW	Act YW
8.6	1.2	44	76	22	45	2.9	1.0	0.008	0.17	0.08	61	555	805

19 TS J103 1314 2140

44286886 — Calved: March 7, 2021 — Tattoo: RE 2140

UPS DOMINO 3027
CK MR ON TARGET J103
 42827294 CK MS DONALD B0077

TS HARLAND EXPLOSION 0736
MISS TS HARLAND 0664 1314
 43420034 MS TS EXPLOSION DOM 0664

CL 1 DOMINO 9126J 1ET
 UPS MISS DIAMOND 1353
 MARK DOMINO 819
 CK MS MONTANA 5056

CJH HARLAND 408
 MISS TS DOMINETTE 4
 EXPLOSION K 1116
 LF L1 DOMINETTE 5100

CE	BW	WW	YW	MM	M&G	MCE	SC	FAT	REA	MARB	Act BW	Act WW	Act YW
6.3	3.3	47	71	25	48	5.6	0.8	0.008	0.20	0.22	58	675	830

HEREFORD BULLS

20 SSBM3J3 [BLACK BALDY]

00000000 — Calved: April 3, 2021 — Tattoo: RE

UPS DOMINO 3027
CHURCHILL SENSATION 028X
43092364 CHURCHILL LADY 7202T ET

CL 1 DOMINO 9126J 1ET
 UPS MISS DIAMOND 1353
 GH RAMBO 279R
 CL 1 DOMINETTE 301N

BISMARCK (WIGGINS RANCH ANGUS)

CE	BW	WW	YW	MM	M&G	MCE	SC	FAT	REA	MARB	Act BW	Act WW	Act YW
												692	

21 TS J103 1801 2157

44286901 — Calved: March 23, 2021 — Tattoo: RE 2157

UPS DOMINO 3027
CK MR ON TARGET J103
44286901 CK MS DONALD B0077

CL 1 DOMINO 9126J 1ET
 UPS MISS DIAMOND 1353
 MARK DOMINO 819
 CK MS MONTANA 5056

CHURCHILL SPIRIT 185Y
MISS TS 185Y 1531 1801
43929178 MISS TS J103 687 1531

GOLDEN OAK OUTCROSS 18U
 CHURCH LADY 7202T ET
 CK MR ON TARGET J103
 MCR L91 DOMINET 687 ET

CE	BW	WW	YW	MM	M&G	MCE	SC	FAT	REA	MARB	Act BW	Act WW	Act YW
6.6	2.4	45	77	30	53	0.8	0.3	0.008	0.46	0.24	62	585	810

22 TS VIC 5132 1520 2136

44286881 — Calved: March 3, 2021 — Tattoo: RE 2136

NICHOLS VICTOR 352
NICHOLS 352 VICTOR 5132
43610170 NICHOLS LADY 31

TH 122 711 VICTOR 719T
 NICHOLS 3147 LADY 1154 ET
 CHURCHILL SENSATION 028X
 NICHOLS LADY 1131

CK MR ON TARGET J103
MISS TS J 0820 1520 1520
43621825 TS 514 1056 0820

UPS DOMINO 3027
 CK MS DONALD B0077
 EE 484 332 514
 TS LADY BARON ADV 3

CE	BW	WW	YW	MM	M&G	MCE	SC	FAT	REA	MARB	Act BW	Act WW	Act YW
9.4	1.0	41	71	18	39	4.6	0.9	0.008	0.16	0.08	61	510	725

23 TS J103 1664 2163

44286931 — Calved: April 2, 2021 — Tattoo: RE 2163

USP DOMINO 3027
CK MR ON TARGET J103
42827294 CK MS DONALD B0077

CL 1 DOMINO 9126J 1ET
 UPS MISS DIAMOND 1353
 MARK DOMINO 819
 CK MS MONTANA 5056

TS HARLAND EXPLOSION 0736
MISS TS HARLAND 335 1664
43713319 RAFTER O APACHE ROSEBUD 335N

CJH HARLAND 08
 MISS TS DOMINETTE 4
 RAFTER O APACHE 901
 RAFTER O LADY BLAIR 002

CE	BW	WW	YW	MM	M&G	MCE	SC	FAT	REA	MARB	Act BW	Act WW	Act YW
5.5	3.3	45	65	26	49	5.1	0.8	0.008	0.23	0.20	61	610	730

HEREFORD BULLS



24 TS VIC 5132 1531 2120

44286859 — Calved: February 23, 2021 — Tattoo: RE 2120

NICHOLS VICTOR 352
NICHOLS 352 VICTOR 5132
 43610170 NICHOLS LADY 31

CK MR ON TARGET J103
MISS TS J103 687 1531
 43621829 MCR L91 DOMINET 687 ET

TH 122 711 VICTOR 719T
 NICHOLS 3147 LADY 1154 ET
 CHURCHILL SENSATION 028X
 NICHOLS LADY 1131

UPS DOMINO 3027
 CK MS DONALD B0077
 -S PURE GOLD 160A L91
 PPF MCR MARK DOMINET 184

CE	BW	WW	YW	MM	M&G	MCE	SC	FAT	REA	MARB	Act BW	Act WW	Act YW
6.8	2.0	50	83	26	51	2.5	1.1	-0.002	0.33	0.08	85	695	915



25 TS VIC 5132 1845 2145

44286892 — Calved: February 26, 2021 — Tattoo: RE 2145

NICHOLS VICTOR 352
NICHOLS 352 VICTOR 5132
 43610170 NICHOLS LADY 31

CK MR ON TARGET J103
MISS TS J103 1429 1845
 43929166 MISS TS J103 EE 1429

TH 122 711 VICTOR 719T
 NICHOLS 3147 LADY 1154 ET
 CHURCHILL SENSATION 028X
 NICHOLS LADY 1131

UPS DOMINO 3027
 CK MS DONALD B0077
 CK MR ON TARGET J103
 MISS 514 520 0929W

CE	BW	WW	YW	MM	M&G	MCE	SC	FAT	REA	MARB	Act BW	Act WW	Act YW
9.8	0.7	44	68	22	44	3.2	1.0	0.008	0.22	0.13	64	545	660

HEREFORD BULLS

26 COMMERCIAL BULL

00000000 — Calved: February 19, 2021 — Tattoo: RE 2117

USP DOMINO 3027
CK MR ON TARGET J103
42827294 CK MS DONALD B0077

CL 1 DOMINO 9126J 1ET
 UPS MISS DIAMOND 1353
 MARK DOMINO 819
 CK MS MONTANA 5056

HARLAND BREEDING

CE	BW	WW	YW	MM	M&G	MCE	SC	FAT	REA	MARB	Act BW	Act WW	Act YW
											56	570	800

27 TS VIC 5132 1756 2164

44286932 — Calved: April 7, 2021 — Tattoo: RE 2164

NICHOLS VICTOR 352
NICHOLS 352 VICTOR 5132
43610170 NICHOLS LADY 31

TH 122 711 VICTOR 719T
 NICHOLS 3147 LADY 1154 ET
 CHURCHILL SENSATION 028X
 NICHOLS LADY 1131

JLB W26 ADVANCE 1190
MISS TS W26 1546 1756
43837428 MISS TS 0736 1010 1546

GO LARRY W26
 K&B MS 6067 EXCEL 9179W
 TS HARLAND EXPLOSION 0736
 MISS HARLAND DOM 1010

CE	BW	WW	YW	MM	M&G	MCE	SC	FAT	REA	MARB	Act BW	Act WW	Act YW
5.9	2.1	55	88	25	52	2.1	1.1	0.008	0.27	0.02	61	545	830

28 TS VIC 5132 1504 2103

44286912 — Calved: February 4, 2021 — Tattoo: RE 2103

NICHOLS VICTOR 352
NICHOLS 352 VICTOR 5132
43610170 NICHOLS LADY 31

TH 122 711 VICTOR 719T
 NICHOLS 3147 LADY 1154 ET
 CHURCHILL SENSATION 028X
 NICHOLS LADY 1131

CK MR ON TARGET J103
MISS TS J103 0910 1504
43621819 MISS 5315 415 0910W

UPS DOMINO 3027
 CK MS DONALD B0077
 EE 0024 8114 5315
 TS LADY STEALTH 415

CE	BW	WW	YW	MM	M&G	MCE	SC	FAT	REA	MARB	Act BW	Act WW	Act YW
8.9	0.7	40	69	21	41	3.5	.9	0.008	0.19	0.09	65	570	815

29 SSUB3J [BLACK BROCKLE FACE]

00000000 — Calved: March 10, 2021 — Tattoo: RE

UPS DOMINO 3027
CHURCHILL SENSATION 028X
43092364 CHURCHILL LADY 7202T ET

CL 1 DOMINO 9126J 1ET
 UPS MISS DIAMOND 1353
 GH RAMBO 279R
 CL 1 DOMINETTE 301N

ULTRABLACK ANGUS (WIGGINS RANCH)

CE	BW	WW	YW	MM	M&G	MCE	SC	FAT	REA	MARB	Act BW	Act WW	Act YW
												760	

HEREFORD BULLS

30 JLB GOLD CATAPULT 2109

44401554 — Calved: February 5, 2021 — Tattoo: RE 2109

CRR 719 CATAPULT 109
RCR GOLD CATAPULT 15109 ET
 43585008 RCR AURUM MISS 02088

TH 122 711 VICTOR 719T
 CRR 4037 ECLIPSE 808
 C -S PURE GOLD 98170
 RCR MISS 98036 1ET

RCR L1 DOM AURUM 08153
A/S LADY AURUM 339
 43404986 A/S BO DELL 722

BR L1 ADVANCE 6017 ET
 RCR AURUM MISS 02088
 UPS BOOMER 4231
 KICKIN ASH

CE	BW	WW	YW	MM	M&G	MCE	SC	FAT	REA	MARB	Act BW	5/31 Wt
-0.5	3.6	53	83	32	59	1.8	0.8	-0.032	0.41	0.02	76	1105

31 JLB 6011 BELLE AIR 2107

44401558 — Calved: February 7, 2021 — Tattoo: RE 2107

BAR S LHF 028 240
BR BELLE AIR 6011
 43724674 BR BELLE 4082 ET

CHURCHILL SENSATOIN 028X
 CHURCHILL LADY 078X
 GOLDEN OAK OUTCROSS 18U
 BR CSF BRIELLE 8052 ET

CL 1 DOMINO 955W
JLD A/S LADY DOMINO 428
 43510996 A/S MS DYNASTY 108

CL 1 DOMINO 637S 1ET
 CL 1 DOMINETTE 5152R
 UPS ODYSSEY 6207
 A/S BO DELL 821

CE	BW	WW	YW	MM	M&G	MCE	SC	FAT	REA	MARB	Act BW	5/31 Wt
0.4	3.0	57	98	36	65	1.0	1.8	0.038	0.58	0.31	73	1135

JC kept a full brother in 2022 to use for in herd use. Dam is exceptional.

32 JLB GOLD CATAPULT 2111

44401568 — Calved: February 8, 2021 — Tattoo: RE 2111

CRR 719 CATAPULT 109
RCR GOLD CATAPULT 15109 ET
 43585008 RCR AURUM MISS 02088

TH 122 711 VICTOR 719T
 CRR 4037 ECLIPSE 808
 C -S PURE GOLD 98170
 RCR MISS 98036 1ET

CHURCHILL SENSATION 028X
JLB MS SENSATION 1701
 43987156 JLB LADY LEGACY 1461

UPS DOMINO 3027
 CHURCHILL LADY 7202T ET
 JLB W26 LEGACY 1101
 JLB LADY HEADLINE 9583

CE	BW	WW	YW	MM	M&G	MCE	SC	FAT	REA	MARB	Act BW	5/31 Wt
1.0	3.1	56	88	33	61	1.1	1.1	-0.012	0.36	0.01	85	1165



HEREFORD BULLS



33 JLB 6011 BELLE AIR 2114

44421493 — Calved: February 26, 2021 — Tattoo: RE 2114

BAR S LHF 028 240
BR BELLE AIR 6011
 43724674 BR BELLE 4082 ET

DHD TURBO HH 1103
JLB HEATHER 1412
 43514418 JLB 9279 HOLLY 1209

CHURCHILL SENSATION 028X
 CHURCHILL LADY 078X
 GOLDEN OAK OUTCROSS 18U
 BR CSF BRIELLE 8052 ET

CHURCHILL HOLLAND 987W ET
 CHURCHILL LADY 962W
 ECR L18 EXTRA DEEP 9279
 JL MISS GOLD 514

CE	BW	WW	YW	MM	M&G	MCE	SC	FAT	REA	MARB	Act BW	5/31 Wt
0.7	3.9	63	101	34	65	1.2	1.6	0.033	.62	0.31	88	1075



34 JLB 1858 DOM 2116

44401555 — Calved: February 27, 2021 — Tattoo: RE 2116

CK MR ON TARGET J103
TS DOM J103 1399 1858
 43929162 MISS TS W26 EE 1399

H EXCEL 011 ET
A/S CASIE 362
 43405671 D/S MISS DOMINO 001

UPS DOMINO 3027
 CK MS DONALD B0077
 JLB W26 ADVANCE 1190
 MISS TS 5315 DOM 1119

GO EXCEL L18
 H PHYLLIS 6062 ET
 A/S DR ADVANCE 602
 A/S BO DELL 814

CE	BW	WW	YW	MM	M&G	MCE	SC	FAT	REA	MARB	Act BW	5/31 Wt
2.9	2.9	50	82	30	55	2.4	0.9	-0.012	0.39	0.17	79	1105

HEREFORD BULLS

35 JLB GOLD CATAPULT 2119

44401565 — Calved: March 1, 2021 — Tattoo: RE 2119

CRR 719 CATAPULT 109
RCR GOLD CATAPULT 15109 ET
 43585008 RCR AURUM MISS 02088

ECR 7195 DOMINO 0272 ET
JLB 0272 MS DOMINO 1613
 43780319 JLB LADY EXCEL 1404

TH 122 711 VICTOR 719T
 CRR 4037 ECLIPSE 808
 C -S PURE GOLD 98170
 RCR MISS 98036 1ET

HH ADVANCE 7195T
 IH 270 MARKIE 2233
 A/S EXCEL 238
 JL MISS ADVANCE 435P 0673

CE	BW	WW	YW	MM	M&G	MCE	SC	FAT	REA	MARB	Act BW	5/31 Wt
-1.5	4.4	49	79	28	52	0.0	0.8	-0.032	0.21	0.00	72	1095

36 JLB GOLD CATAPULT 2126

44401545 — Calved: March 8, 2021 — Tattoo: RE 2126

CRR 719 CATAPULT 109
RCR GOLD CATAPULT 15109 ET
 43585008 RCR AURUM MISS 02088

UPS ODYSSEY 7128
PMH MS OBSESSION 006 ET
 43139516 MOHICAN LASS 151L

TH 122 711 VICTOR 719T
 CRR 4037 ECLIPSE 808
 C -S PURE GOLD 98170
 RCR MISS 98036 1ET

UPS ODYSSEY 1ET
 UPS MISS DIAMOND 0857
 REMITAL BOOMER 46B
 FSL VICTORIA 579 16F

CE	BW	WW	YW	MM	M&G	MCE	SC	FAT	REA	MARB	Act BW	5/31 Wt
-0.5	4.3	48	81	25	50	-0.4	0.7	-0.022	0.30	-0.01	94	1060

37 JC CATAPULT 2161

44333382 — Calved: March 9, 2021 — Tattoo: RE 2161

CRR 719 CATAPULT 109
RCR GOLD CATAPULT 15109 ET
 43585008 RCR AURUM MISS 02088

ECR 7195 DOMINO 0272 ET
JC MISS ADVANCE 323
 43461378 JC MISS ADVANCE 718

TH 122 711 VICTOR 719T
 CRR 4037 ECLIPSE 808
 C -S PURE GOLD 98170
 RCR MISS 98036 1ET

HH ADVANCE 7195T
 IH 270 MARKIE 2233
 CJH HARLAND 408
 JC LADY ENDURANCE 344

CE	BW	WW	YW	MM	M&G	MCE	SC	FAT	REA	MARB	Act BW	5/31 Wt
3.6	2.4	48	76	24	48	2.0	0.9	-0.002	0.17	0.08	67	1230



HEREFORD BULLS



38 JC TS DOMINO 2159

44345504 — Calved: March 9, 2021 — Tattoo: RE 2159

CK MR ON TARGET J103
TS DOM J103 1399 1858
 43929162 MISS TS W26 EE 1399

A/S EXCEL 238
JC MISS ADVANCE 766
 43891140 JC DOMINETTE 032

UPS DOMINO 3027
 CK MS DONALD B0077
 JLB W26 ADVANCE 1190
 MISS TS 5315 DOM 1119

H EXCEL 011 ET
 AS MS ODYSSEY 936
 DPH TUCKER 277T
 MCR L1 MARK DOMINET 422

CE	BW	WW	YW	MM	M&G	MCE	SC	FAT	REA	MARB	Act BW	5/31 Wt
2.4	3.5	52	84	30	56	2.0	0.9	-0.012	0.43	0.15	72	1120

39 JLB D56 CONTENDER 2128 ET

44421574 — Calved: March 9, 2021 — Tattoo: RE 2128

UPS SENSATION 2296 ET
KJ BJ 58Z CONTENDER D56 ET
 43770756 MSU RACHAEL 58Z ET

CRR ABOUT TIME 743
MCGURK KOLT WINT E TIME 363 ET
 43829038 TTT SWEET RED WINE

CHURCHILL SENSATION 028X
 UPS JT MISS NEON 7811 1ET
 FELTONS LEGEND 242
 MSU TCF RACHAEL ET 54N

THM DURANGO 4037
 CRR D03 CASSIE 206
 GOLDEN OAK OUTCROSS 18U
 R SWEET RED WINE 039

CE	BW	WW	YW	MM	M&G	MCE	SC	FAT	REA	MARB	Act BW	5/31 Wt
0.7	3.8	57	88	32	60	-0.1	1.1	0.003	0.69	0.08	98	1045

Scurred.

40 JC CATAPULT 2158

44355922 — Calved: March 10, 2021 — Tattoo: RE 2158

CRR 719 CATAPULT 109
RCR GOLD CATAPULT 15109 ET
 43585008 RCR AURUM MISS 02088

ECR 2109 DOMINO 4171
JC DOMINETTE 720
 43891144 JC MISS ADVANCE 167

TH 122 711 VICTOR 719T
 CRR 4037 ECLIPSE 808
 C -S PURE GOLD 98170
 RCR MISS 98036 1ET

CL 1 DOMINO 2109Z
 ECR 860 DOMINETTE 0232
 JL OUTBREAK 0655
 JC MISS ADVANCE 528

CE	BW	WW	YW	MM	M&G	MCE	SC	FAT	REA	MARB	Act BW	5/31 Wt
-4.8	5.7	56	93	27	55	-1.8	0.8	-0.022	0.32	-0.07	82	1190

HEREFORD BULLS

41 JC TS DOMINO 2158A

44345505 — Calved: March 10, 2021 — Tattoo: RE 2158A

CK MR ON TARGET J103
TS DOM J103 1399 1858
 43929162 MISS TS W26 EE 1399

A/S EXCEL 238
JC MISS ADVANCE 814
 44006694 JC MISS ADVANCE 411

UPS DOMINO 3027
 CK MS DONALD B0077
 JLB W26 ADVANCE 1190
 MISS TS 5315 DOM 1119

H EXCEL 011 ET
 AS MS ODYSSEY 936
 JLB W26 LEGACY 1101
 JC MISS ADVANCE 915

CE	BW	WW	YW	MM	M&G	MCE	SC	FAT	REA	MARB	Act BW	5/31 Wt
1.3	3.6	51	84	29	54	0.8	0.9	-0.012	0.42	0.15	70	1120



42 JLB 1858 DOM 2130

44401552 — Calved: March 11, 2021 — Tattoo: RE 2130

CK MR ON TARGET J103
TS DOM J103 1399 1858
 43929162 MISS TS W26 EE 1399

UPS DOMINO 3027
A/S CARLEY 307
 43405659 A/S MS DYNASTY 114

UPS DOMINO 3027
 CK MS DONALD B0077
 JLB W26 ADVANCE 1190
 MISS TS 5315 DOM 1119

CL 1 DOMINO 9126J 1ET
 UPS MISS DIAMOND 1353
 UPS ODYSSEY 6207
 A/S BO DELL 814

CE	BW	WW	YW	MM	M&G	MCE	SC	FAT	REA	MARB	Act BW	5/31 Wt
3.5	2.8	50	83	32	57	3.6	0.9	0.008	0.41	0.26	84	1055

43 JC TS DOMINO 2162

44345507 — Calved: March 11, 2021 — Tattoo: RE 2162

CK MR ON TARGET J103
TS DOM J103 1399 1858
 43929162 MISS TS W26 EE 1399

A/S EXCEL 238
JC MISS ADVANCE 622
 43772313 JC DOMINETTE 286

UPS DOMINO 3027
 CK MS DONALD B0077
 JLB W26 ADVANCE 1190
 MISS TS 5315 DOM 1119

H EXCEL 011 ET
 AS MS ODYSSEY 936
 ECR 7195 DOMINO 0272 ET
 JC MISS ADVANCE 935

CE	BW	WW	YW	MM	M&G	MCE	SC	FAT	REA	MARB	Act BW	5/31 Wt
-1.5	5.1	54	88	29	56	-0.7	0.8	-0.012	0.35	0.14	82	1100

HEREFORD BULLS

44 JC TS DOMINO 2165

44345508 — Calved: March 11, 2021 — Tattoo: RE 2165

CK MR ON TARGET J103
TS DOM J103 1399 1858
 43929162 MISS TS W26 EE 1399

ECR 2109 DOMINO 4171
JC DOMINETTE 668
 43415350 JC MISS ADVANCE 182

UPS DOMINO 3027
 CK MS DONALD B0077
 JLB W26 ADVANCE 1190
 MISS TS 5315 DOM 1119

CL 1 DOMINO 2109Z
 ECR 860 DOMINETTE 0232
 JL OUTBREAK 0655
 JC MISS ADVANCE 442

CE	BW	WW	YW	MM	M&G	MCE	SC	FAT	REA	MARB	Act BW	5/31 Wt
3.1	2.6	48	80	27	51	0.9	0.9	0.008	0.40	0.16	68	1025

45 JC CATAPULT 2166

44333386 — Calved: March 13, 2021 — Tattoo: RE 2166

CRR 719 CATAPULT 109
RCR GOLD CATAPULT 15109 ET
 43585008 RCR AURUM MISS 02088

A/S EXCEL 238
JC MISS ADVANCE 476
 43625263 JC MISS ADVANCE 140

TH 122 711 VICTOR 719T
 CRR 4037 ECLIPSE 808
 C-S PURE GOLD 98170
 RCR MISS 98036 1ET

H EXCEL 011 ET
 AS MS ODYSSEY 936
 GO LARRY W26
 JC MISS ADVANCE 835

CE	BW	WW	YW	MM	M&G	MCE	SC	FAT	REA	MARB	Act BW	5/31 Wt
-0.1	3.8	54	85	27	54	1.4	0.8	-0.032	0.32	-0.01	73	945

46 JC TS DOMINO 2167

44345509 — Calved: March 14, 2021 — Tattoo: RE 2167

CK MR ON TARGET J103
TS DOM J103 1399 1858
 43929162 MISS TS W26 EE 1399

A/S EXCEL 238
JC MISS ADVANCE 842
 43514781 JC ISS ADVANCE 331

UPS DOMINO 3027
 CK MS DONALD B0077
 JLB W26 ADVANCE 1190
 MISS TS 5315 DOM 1119

H EXCEL 011 ET
 AS MS ODYSSEY 936
 ECR 7195 DOMINO 0272 ET
 JC MISS ADVANCE 735

CE	BW	WW	YW	MM	M&G	MCE	SC	FAT	REA	MARB	Act BW	5/31 Wt
1.5	3.5	50	81	29	54	1.4	0.8	-0.012	0.37	0.18	70	1080

47 JC TS DOMINO 2153

44345510 — Calved: March 16, 2021 — Tattoo: RE 2153

CK MR ON TARGET J103
TS DOM J103 1399 1858
 43929162 MISS TS W26 EE 1399

A/S EXCEL 238
JC MISS ADVANCE 429
 43637541 JC MISS ADVANCE 102

UPS DOMINO 3027
 CK MS DONALD B0077
 JLB W26 ADVANCE 1190
 MISS TS 5315 DOM 1119

H EXCEL 011 ET
 AS MS ODYSSEY 936
 JL OUTBREAK 0655
 JC DOMINETTE 270

CE	BW	WW	YW	MM	M&G	MCE	SC	FAT	REA	MARB	Act BW	5/31 Wt
-1.2	4.8	51	84	28	53	0.0	0.8	-0.012	0.35	0.12	80	1215

HEREFORD BULLS

48 JC CATAPULT 2157

44333413 — Calved: March 19, 2021 — Tattoo: RE 2157

CRR 719 CATAPULT 109
RCR GOLD CATAPULT 15109 ET
 43585008 RCR AURUM MISS 02088

ECR 7195 DOMINO 0272 ET
JC DOMINETTE 509
 43366820 JC DOMINETTE 032

TH 122 711 VICTOR 719T
 CRR 4037 ECLIPSE 808
 C -S PURE GOLD 98170
 RCR MISS 98036 1ET
 HH ADVANCE 7195T
 IH 270 MARKIE 2233
 DPH TUCKER 277T
 MCR L1 MARK DOMINET 422

CE	BW	WW	YW	MM	M&G	MCE	SC	FAT	REA	MARB	Act BW	5/31 Wt
2.1	3.0	48	76	26	50	1.6	0.7	-0.032	0.30	0.02	70	1210

49 JC CATAPULT 2170

44333387 — Calved: March 20, 2021 — Tattoo: RE 2170

CRR 719 CATAPULT 109
RCR GOLD CATAPULT 15109 ET
 43585008 RCR AURUM MISS 02088

ECR 2109 DOMINO 4171
JC DOMINETTE 602
 43776312 JC DOMINETTE 348

TH 122 711 VICTOR 719T
 CRR 4037 ECLIPSE 808
 C -S PURE GOLD 98170
 RCR MISS 98036 1ET
 CL 1 DOMINO 2109Z
 ECR 860 DOMINETTE 0232
 ECR 7195 DOMINO 0272 ET
 JC MISS ADVANCE 140

CE	BW	WW	YW	MM	M&G	MCE	SC	FAT	REA	MARB	Act BW	5/31 Wt
-0.6	3.5	56	90	27	55	-0.7	0.8	-0.012	0.36	-0.01	75	1025



50 JLB GOLD CATAPULT 2143

44401566 — Calved: March 25, 2021 — Tattoo: RE 2143

CRR 719 CATAPULT 109
RCR GOLD CATAPULT 15109 ET
 43585008 RCR AURUM MISS 02088

JLB W26 LEGACY 1101
JLB LADY LEGACY 1663
 43780773 A/S BO DELL 722

TH 122 711 VICTOR 719T
 CRR 4037 ECLIPSE 808
 C -S PURE GOLD 98170
 RCR MISS 98036 1ET
 GO LARRY W26
 BR GEISHA 8003 ET
 UPS BOOMER 4231
 KICKIN ASH

CE	BW	WW	YW	MM	M&G	MCE	SC	FAT	REA	MARB	Act BW	5/31 Wt
-1.1	3.9	50	83	29	55	0.8	0.9	-0.032	0.37	-0.01	83	1125

HEREFORD BULLS

51 JLB E756 CAPITAL 2146

144401571 — Calved: March 31, 2021 — Tattoo: RE 2146

UPS HUTTON 4249 ET
LHF 4249 CAPITAL E756
P43805031 LHF 20T LEADING LADY 433B

NJW 73S 980 HUTTON 109Z ET
 SHF LADY M326 U33 ET
 WLC HAROLDSONS 13P MAXX ET 20T
 LHF LEADING LADY 633S ET

JLB 1103 TURBO 1466 ET
JLB 1466 MS TURBO 1747
43886084 A/S CASIE 245

DHD TURBO HH 1103
 JL LADY DIAMOND 5830
 H EXCEL 011 ET
 A/S BO DELL 722

CE	BW	WW	YW	MM	M&G	MCE	SC	FAT	REA	MARB	Act BW	5/31 Wt
0.0	3.0	50	90	23	48	1.8	1.0	0.028	0.46	0.18	79	1070

Polled.

52 JC ADVANCE 2172

44356003 — Calved: April 5, 2021 — Tattoo: RE 2172

DHD TURBO HH 1103
JLB 1103 TURBO 1466 ET
43678817 JL LADY DIAMOND 5830

CHURCHILL HOLLAND 987W ET
 CHURCHILL LADY 962W
 OXH DIAMOND 0222
 SVR STERLING ROSE 8305

A/S EXCEL 238
JC MISS ADVANCE 1661
44356000 JC DOMINETTE 313

H EXCEL 011 ET
 AS MS ODYSSEY 936
 ECR L18 EXTRA DEEP 9279
 JC DOMINETTE 903 ET

CE	BW	WW	YW	MM	M&G	MCE	SC	FAT	REA	MARB	Act BW	5/31 Wt
1.6	2.8	45	75	25	48	1.5	0.5	-0.002	0.41	0.10	70	1250

53 JLB TUCKER 2186

44421502 — Calved: April 10, 2021 — Tattoo: RE 2186

CRR 719 CATAPULT 109
TCC TUCKER 1900 ET
44401977 TCC MISS SHELBY 82 ET

TH 122 711 VICTOR 719T
 CRR 4037 ECLIPSE 808
 ANKONIAN MIDAS 72
 LCC TWO TIMIN 438 ET

JCS HOMEBREW 4616 ET
JLB LADY HOMEBREW 1915
44109261 JLD A/S LADY DOMINO 428

NJW 73S W18 HOMETOWN 10Y ET
 JCS MISS KITTY 9200
 CL 1 DOMINO 955W
 A/S MS DYNASTY 108

CE	BW	WW	YW	MM	M&G	MCE	SC	FAT	REA	MARB	Act BW	5/31 Wt
-3.5	4.4	52	89	27	52	-2.1	0.9	-0.032	0.44	-0.17	81	990

54 COMMERCIAL BULL

00000000 — Calved: March 19, 2021 — Tattoo: RE 2135

UPS SPARTAN 3310
DR SPARTAN
U43990539 DR MISS DIAMOND 608

UPS SPARTAN 1282
 UPS DOMINO 0092
 DR WASTIN TIME 417
 CC CAMO 429

RCR GOLD CATAPULT 15109 ET
JLB HEIDE 1820F
43956247 JLB HEATHER 1412

CRR 719 CATAPULT 109
 RCR AURUM MISS 02088
 DHO TURBO HH 1103
 JLB 9279 HOLLY 1209

CE	BW	WW	YW	MM	M&G	MCE	SC	FAT	REA	MARB	Act BW	5/31 Wt
											77	1055

Sire died before we could do DNA for AHA. Selling without papers, but still an excellent bull!



TS FEMALES

100

TS Ranch - Wes - 620-583-4172

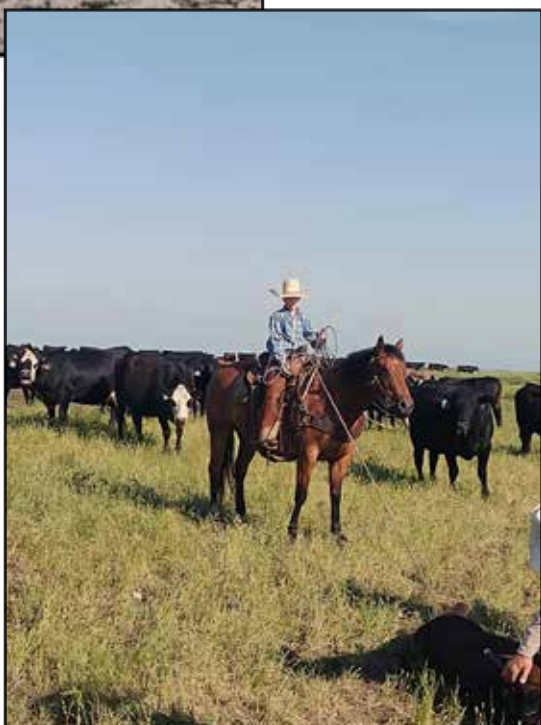
- A)** 4 hd. purebred Registered Hereford spring bred 1st calf heifers. Bred to C Bell Heir 0281 ET. Exposed May 7th - October 4th, 2022
- B)** 4 hd. purebred Commercial Hereford spring bred 1st calf heifers. Bred to C Bell Heir 0281 ET. Exposed May 7th - October 4th, 2022
- C)** 6 hd. Commercial BWF 2 yr. old 1st calf spring bred heifers. Bred to low birth wt. KW black Angus bull. Exposed May 7th - October 2nd, 2022
- D)** 6 hd. Commercial RWF and Hereford 2 yr. old 1st calf spring bred heifers. Bred to low birth wt. KW black Angus bull. Exposed May 7th - October 2nd, 2022



TS RANCH



TS RANCH



QUARTER HORSE REFERENCE SIRES



TR KIT REY

Sorrel Stallion • Foaled: April 26, 2006 • 4820030

TR DUAL REY
3795517

DUAL REY
PEPPYS MISTY OAKS

PRETTY LITTLE KITTY
2422293

SMART LITTLE LENA
DOC'S KITTY

DUAL PEP
NURSE REY
CANDY BAR PEPPY
OAKS MISTY PEPPY
DOC O'LENA
SMART PEPPY
DOC BAR
KITTY BUCK

Wes Bailey is riding this stallion, working cattle on the ranch. Bred to one of the great sires of all times, by NCHA Horse of the year, TR DUAL REY. PRETTY LITTLE KITTY is a full sister to SMART LITTLE KITTY, making this horse genetically a maternal half brother to HIGH BROW CAT.

QUARTER HORSE REFERENCE SIRES



HAIRPIN SURE IS BLUE

Gray Stallion • Foaled: May 10, 2000 • 4083366

VALENTINE RED ROGERS
2924635

GOOSEBERRY
MISS DUSTY DOT

BLUE VALENTINE
FOX HASTINGS
MISTY CARBERRY
DUSTY ROGERS
JET SMOOTH
OLE HEART'S GAL
TWO ROCKS
BEGO BLUE LADY

SURE IS SMOOTH
1986197

SMOOTH AT HEART
BLUE TWO ROCKS

“Blue”, as we all call him, came to us from the Birdwell Ranch, Fletcher, OK. He has proven to be an excellent cross on Rawhide bred mares.

QUARTER HORSE REFERENCE SIRES



CRR HURRICANE CAT

Bay Roan Stallion • Foaled: March 20, 2005 • 4706294

CATS RHETT
3651584

HIGH BROW CAT
SCARLET DANCE

MORIAS BLUE BOON
4331572

DUALS BLUE BOON
LITTLE MORIA

HIGH BROW HICKORY
SMART LITTLE KITTY
PEPPY SAN BADGER
CHICLYNX
DUAL PEP
ROYAL BLUE BOON
SMART LITTLE LENA
MORIA SUGAR

Hurricane is a finished cutter with NCHA winnings. His offspring show great athleticism with bite. He is a proven producer of some outstanding offspring in the arena, or your own personal remuda. His conformation and willingness to please carries through his offspring with a strong roan trait.

QUARTER HORSES

60 IMA DUAL REY RAWHIDE

Buckskin Stallion • Foaled: May 12, 2022 • Reg. #6185231

TR KIT REY
4820030

TR DUAL REY
PRETTY LITTLE KITTY

GOLD BARS POPPY
5072142

FANCY ZAN GOLD BAR
FRIDAYS MISTY

DUAL REY
PEPPYS MISTY OAKS
SMART LITTLE LENA
DOC'S KITTY
ZANS RAWHIDE
MISS FANCY RAWHIDE
DANDEES GOOD FRIDAY
TRIXES PRIDE

- Powerful and stout colt. This colt is going to be a superstar for someone! Full sister went to California last year for \$7,750.
- Star, broken strip and snip. Left fore pastern white. Right fore half pastern white. Socks on hind feet. No other markings.

61 RAWHIDE STORMY GIRL

Bay Roan Mare • Foaled: April 16, 2022 • Reg. #6197232

CRR HURRICANE CAT
4706294

CATS RHETT
MORIAS BLUE BOON

MISS RAWHIDE BABE
4867451

ZANS RAWHIDE
DUDES SUN BABE

HIGH BROW CAT
SCARLET DANCE
DUALS BLUE BOON
LITTLE MORIA
ZAN PARR BAR
TYREE'S HONEY
SUN OTOES DUDE
IMA ZANNY BABE

- We really like this cross on Hurricane. Should be athletic and smart. She will excel in any direction you decide to take her.
- White hairs in forehead. Left fore half pastern white. Hind pasterns white. Dark spots on hind coronets. No other markings.

62 SURE IS BLUECAT

Red Roan Mare • May 19, 2022 • Reg. #6189468

HAIRPIN SURE IS BLUE
4083366

VALENTINE RED ROGERS
SURE IS SMOOTH

SMART MAY CAT
5330185

RCS DOC STARLIGHT
RC SMART LITTLE LADY

GOOSEBERRY
MISS DUSTY DOT
SMOOTH AT HEART
BLUE TWO ROCKS
DOSEYS STAR
CORCHAS CAMEO JEWEL
SMARTEST LITTLE CAT
LESLIES DAWN STAR

- This filly can really move. She is light on her feet and moves off her hind-end naturally. Should be able to really run... her momma is fast.
- Star. All coronets white. No other markings.

QUARTER HORSES



QUARTER HORSES

63 BLUES ZANS OTOE

Sorrel Stallion • Foaled: May 11, 2022 • Reg. #6185240

HAIRPIN SURE IS BLUE 4083366	VALENTINE RED ROGERS	GOOSEBERRY
	SURE IS SMOOTH	MISS DUSTY DOT
ZANS SUN OTOES 5103234	SUN OTOES DUDE	SMOOTH AT HEART
	ZANS PACIFIC WIMPET	BLUE TWO ROCKS
		SUN OTOE
		GOLD BAILEY GIRL 71
		ZANS RAWHIDE
		OTOES WIMPY PAC

- Wow! This colt is a standout now! Well built, big hip, he is going to be a superstar horse. This cross has produced big, quiet and cowy horses.
- Star. Left fore coronet white. Right fore pastern white. Left hind half pastern white. Roan in flanks. No other markings.

64 WR HIGH MOON CAT

Sorrel Mare • Foaled: April 30, 2022 • Reg. #6179052

CRR HURRICANE CAT 4706294	CATS RHETT	HIGH BROW CAT
	MORIAS BLUE BOON	SCARLET DANCE
JE MOON N BACK 5563110	THIS CATS PEPPY	DUALS BLUE BOON
	HALF MOON FANTASY	LITTLE MORIA
		HIGH BROW CAT
		LIL SALLY PEPPY
		DRY DOC
		LAVENDER LASS

- Look at the hip on this double bred High Brow Cat filly.
- Strip and snip. Socks on hind feet. No other markings.

65 POPULAR RESORT CAT

Bay Roan Mare • Foaled: May 7, 2022 • Reg. #6185243

CRR HURRICANE CAT 4706294	CATS RHETT	HIGH BROW CAT
	MORIAS BLUE BOON	SCARLET DANCE
RAWHIDE RESORT BABE 5336172	POPULAR RESORTFIGURE	DUALS BLUE BOON
	MISS RAWHIDE BABE	LITTLE MORIA
		DUAL PEP
		BAR J JACKIE
		ZANS RAWHIDE
		DUDES SUN BABE

- Colts from this cross have been outstanding to train and ride. Dam is out of AQHA Super Horse "Popular Resort Figure". Cross her with CRR Hurricane Cat is an automatic win win!
- Star. Right hind coronet white. Dark spots on right hind coronet. No other markings.

QUARTER HORSES



QUARTER HORSES

66 CUTTERS BLUE MATE

Brown Mare • Foaled: May 24, 2022 • Reg. #6182627

HAIRPIN SURE IS BLUE
4083366 VALENTINE RED ROGERS
SURE IS SMOOTH

HICKORY CUTTER BILL
4662128 BLACK HICKORY MATE
COCOS BAR QUEEN

GOOSEBERRY
MISS DUSTY DOT
SMOOTH AT HEART
BLUE TWO ROCKS
SMART MATE
MOLLY O HICKORY
KING CHROME BARS
COCO R6

- Old cow-bred lineage "Smart Mate" mare. Great conformation and muscling on this colt. Very unique color with roan flakes throughout her.
- Star, broken strip and snip. White on lower lip. Right fore half pastern white. Left hind half pastern white. Dark spot on left hind coronet. Right hind pastern white. Roan in flanks and white hair at root of tail. No other markings.

67 BLUES FAIRFAX BOY

Sorrel Stallion • Foaled: May 24, 2022 • Reg. #6182631

HAIRPIN SURE IS BLUE
4083366 VALENTINE RED ROGERS
SURE IS SMOOTH

STARLET JODIE
5210399 JODIES RONDO
STARLET LEO MISS

GOOSEBERRY
MISS DUSTY DOT
SMOOTH AT HEART
BLUE TWO ROCKS
JODY FAIRFAX
PRICES MISTY LADY 75
HUDDY BOY
PRICES STARLET LEO

- We would likely call her a Dun now that the dorsel strip is becoming more visible.
- Star, strip, and snip. Fore coronets partially white. Left hind coronet partially white. Right hind sock. No other markings.

68 BLUES HAIRPIN WIMPET

Bay Roan Mare • Foaled: April 24, 2022 • Reg. #6194123

TR KIT REY
4820030 TR DUAL REY
PRETTY LITTLE KITTY

BLUES PETITE SUE
5839049 HAIRPIN SURE IS BLUE
ZANS PACIFIC WIMPET

DUAL REY
PEPPYS MISTY OAKS
SMART LITTLE LENA
DOC'S KITTY
VALENTINE RED ROGERS
SURE IS SMOOTH
ZANS RAWHIDE
OTOES WIMPY PAC

- Full brother last year was 2nd highest selling colt. This colt will be quiet and well built when she grows up.
- Star. White above left eye. White above right eye. White on bridge of nose. No other markings.

QUARTER HORSES



QUARTER HORSES

69 WR HOT PEPPER CAT

Bay Roan Mare • Foaled: August 1, 2022 • Reg. #6187786

CRR HURRICANE CAT
4706294
CATS RHETT
MORIAS BLUE BOON

OLENAS CHILI PEPPER
4955117
BLACK HICKORY MATE
OLENA SAN PEPPY

HIGH BROW CAT
SCARLET DANCE
DUALS BLUE BOON
LITTLE MORIA
SMART MATE
MOLLY O HICKORY
LENA FAJITA
MS PERA

- You usually have to go to big name horse sale to find a colt this nice and bred this good. Wes is such a believer in this cross that he has 3 of the same pedigree in his own herd.
- Star and snip. White above left eye. White above right eye. White on upper lip. No other markings.

70 HICKS ROAN BALOU

Red Roan Stallion • Foaled: June 20, 2022 • Reg. #6209507

BLUE LIL HICKORY
5282522
BOON A LITTLE
MISS HICKORY WHEEL

MISS KITTY REY BALOU
5622648
TR KIT REY
LACY BALOU

SMART LITTLE LENA
AUTUMN BOON
DOC'S HICKORY
MISS PEPPY WHEELING
TR DUAL REY
PRETTY LITTLE KITTY
TWO SOCKS TARI
JODY BALOU

- A June born colt with some catching up to do, but all the cow you could want on his pedigree.
- Star. White on upper lip. Fore half pasterns white. Left hind half pastern white, Dark spot on left hind coronet. No other markings.

71 WR OLEANA REY

Sorrel Mare • Foaled: April 27, 2022 • Reg. #6196067

TR KIT REY
4820030
TR DUAL REY
PRETTY LITTLE KITTY

HURRICANES CATFISH
5194026
CRR HURRICANE CAT
OLENA SAN PEPPY

DUAL REY
PEPPYS MISTY OAKS
SMART LITTLE LENA
DOC'S KITTY
CATS RHETT
MORIAS BLUE BOON
LENA FAJITA
MS PERA

- Flashy sorrel with chrome. This awesome filly is built to perform and will take you to the winners circle. Pretty confident she will eat a cow up!
- Star, strip, and snip. Left fore pastern white. Right fore sock. Left hind sock. Dark spot on left hind heel. Right hind pastern white. No other markings.

QUARTER HORSES



QUARTER HORSES

72 SURE IS SUNSHINE

Gray Mare • Foaled: April 23, 2022 • Reg. #6185241

HAIRPIN SURE IS BLUE
4083366 VALENTINE RED ROGERS
SURE IS SMOOTH

RAWHIDES SUNSHINE
4273845 ZANS RAWHIDE
OTOES SUNNY GIRL

GOOSEBERRY
MISS DUSTY DOT
SMOOTH AT HEART
BLUE TWO ROCKS
ZAN PARR BAR
TYREE'S HONEY
SUN OTOE
GOLD BAILEY GIRL 71

- Great Elmore Stout foundation bred colt. Very big boned, well made colt. Think she will gray out, but not 100% sure.
- No markings.

73 SALLIE MAE REY

Brown Mare • Foaled: May 4, 2022 • Reg. #6178113

TR KIT REY
4820030 TR DUAL REY
PRETTY LITTLE KITTY

SAH ZANSPEPPYBREEZE
5475074 SAH DRIFT N ZAN 919
SENNES ZANS RAWHIDE

DUAL REY
PEPPYS MISTY OAKS
SMART LITTLE LENA
DOC'S KITTY
BLUES ORPHAN DRIFT
SAH GIAS RAWHIDE
ZANS RAWHIDE BUCK
SR DOCS PEPPY BREEZE

- Cute, clean headed colt with a nice hip. "Sallie" is quiet, calm and always in your back pocket. Her momma sells in Lot 74.
- Star and snip. Left fore heel white. Right fore coronet white. Left hind sock. Right hind coronet white. No other markings.

74 SAH ZANSPEPPYBREEZE

Brown Mare • Foaled: May 3, 2012 • Reg. #5475074

SAH DRIFT N ZAN 919
5229933 BLUES ORPHAN DRIFT
SAH GIAS RAWHIDE

SENNES ZANS RAWHIDE
4656504 ZANS RAWHIDE BUCK
SR DOC PEPPY BREEZE

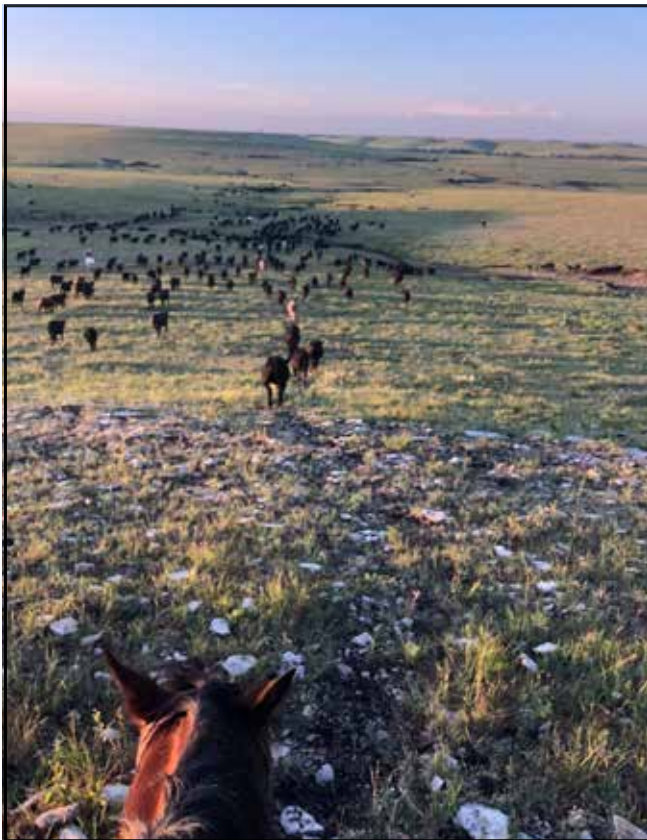
LEO HANCOCK HAYES
MISS SUSITA HANCOCK
ZANDOREL BUCK
YOGI GIA
ZANS RAWHIDE
COCOS BAR QUEEN
HACKBERRYS STAR
CEDARS SUNNY DOC

- "Pepper" is a solid ranch horse. Wayne Bailey has used her extensively since 2015 in the Flint Hills. Push cattle, get gates, doctor yearlings, she has seen it all and raised 2 really nice colts while still being used. Great to shoe, no buck or spooks. Walk her up to the back of trailer for easy mounting. She has always ran with all his other mares and geldings, but she likes to rule the roost. She is quiet and a smooth traveler.
- Star. Left hind pastern white. Dark spot on left hind coronet. Right hind coronet white. Branded WB on left thigh. No other markings.

QUARTER HORSES



SEE YA NEXT YEAR!



*In the center
of the Fair Hills*



1764 Norton Creek Rd.
Cottonwood Falls, KS 66845

**PLEASE BRING
YOUR CATALOG
WITH YOU SALE DAY**

Catalogs by Kansas Graphics, Inc.
620-273-6111
www.kansasgraphicsinc.com