

BLS-5000

Scientia LLC
 ODA #: AG-R1055293IHH
 314-401-2501

Sample Type: Hemp Cannabinoid Product
 Sample Date: 6/19/2020
 Analysis Date: 6/25/2020
 Report Date: 6/30/2020

Metric Batch ID:
 Metric Sample ID:

Harvest/Process Date:
 Report ID: LS-200630-31
 Sample Plan ID:
 Sample Procedure: 160721_LAB-SOP_SampleCollection-v008

Potency

Potency Analysis Date: 6/25/2020
 Potency Batch ID: CAN_062520B
 Potency Method: JAOAC 2015.1

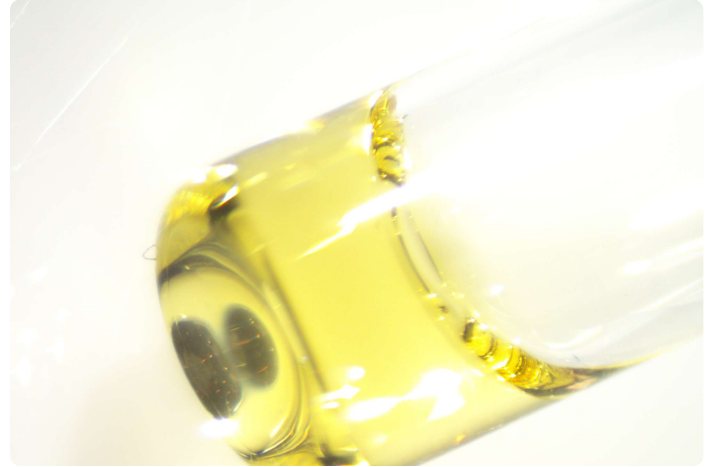
196 mg/g

Total CBD
 19.6%

ND

Total THC
 ND

Samples: MGC-XGD-CDR



Analyte	Description	LOQ	RPD (%)	Min.	Max.	Conc.	Unit: mg/g
Δ9THC	Delta-9 Tetrahydrocannabinol	0.080	-	-	-	ND	
THCA	Tetrahydrocannabinolic acid	0.080	-	-	-	ND	
CBD	Cannabidiol	0.080	-	-	-	196	
CBDA	Cannabidiolic acid	0.080	-	-	-	0.787	
Δ8THC	Delta-8 Tetrahydrocannabinol*	0.080	-	-	-	ND	
THCV	Tetrahydrocannabivarin*	0.080	-	-	-	ND	
CBG	Cannabigerol*	0.080	-	-	-	10.0	
CBGA	Cannabigerolic acid*	0.080	-	-	-	0.388	
CBC	Cannabichromene*	0.080	-	-	-	ND	
CBCA	Cannabichromenic acid*	0.080	-	-	-	ND	
CBN	Cannabinol	0.080	-	-	-	ND	
Total THC	Δ9THC + (THCA × 0.877)		-	-	-	ND	
Total CBD	CBD + (CBDA × 0.877)		-	-	-	196	
Total			-	-	-	207	


 Bryce Kidd, Ph.D.
 Lab Director


 Aaron Troyer
 Chief Science Officer

This data cannot be used for OLCC or OHA compliance for usable marijuana or marijuana products and is provided for Research and Development purposes only.



BLS-5000

Scientia LLC
ODA #: AG-R1055293IHH

314-401-2501

Sample Type: Hemp Cannabinoid Product
Sample Date: 6/19/2020
Analysis Date: 6/25/2020
Report Date: 6/30/2020

Metric Batch ID:

Metric Sample ID:

Harvest/Process Date:
Report ID: LS-200630-31
Sample Plan ID:
Sample Procedure: 160721_LAB-
SOP_SampleCollection-v008

Qualifier Flag Descriptions

J	Reported result is an estimate - the value is less than the minimum calibration level but greater than the estimated detection limit (EDL)
U	The analyte was not detected in the sample at the estimated detection limit (EDL)
E	Exceeds calibration range
D	Dilution data - result was obtained from the analysis of a dilution
B	Analyte found in sample and associated blank
C	Co-eluting compound
R	Relative Percent Difference (RPD) outside control limits
NR	Analyte not reported because of problems in sample preparation or analysis
ND	Non-Detect
X	Results from reinjection/repeat/re-column data
EMC	Estimated maximum possible concentration - indicates that a peak is detected but did not meet the method required criteria
M	Manual integration
PS	Peaks split
HB	Control acceptance criteria are exceeded high and the associated sample is below the detection limit
LB	Control acceptance criteria are exceeded low and the associated sample exceeds the regulatory limit
ME	Marginal Exceedance
LR	Low Recovery Analyte
LOQ	Limit of Quantitation