

1055293-VOS-HSO-500-082520

Scientia LLC
 ODA #: AG-R1055293IHH
 314-401-2501

Sample Type: Tinctures
 Sample Date: 8/27/2020
 Analysis Date: 9/1/2020
 Report Date: 9/3/2020

Metric Batch ID:
 Metric Sample ID:

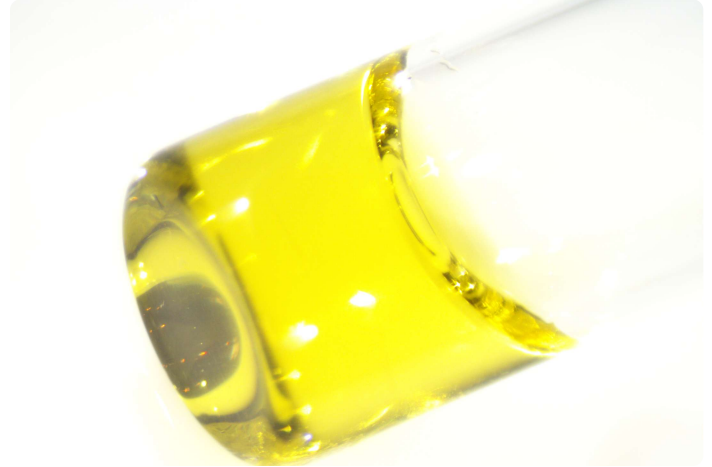
Harvest/Process Date: 8/26/2020
 Report ID: LS-200903-32
 Sample Plan ID:
 Sample Procedure: 160721_LAB-SOP_SampleCollection-v008

Potency

Potency Analysis Date: 9/1/2020
 Potency Batch ID: CAN_090120A
 Potency Method: JAOAC 2015.1

16.6 mg/mL Total CBD
 1.78%

0.0600 mg/mL Total THC
 0.0645%



Samples: JTH-MJW-GSF

Analyte	Description	LOQ	RPD (%)	Min.	Max.	Conc.	Unit: mg/mL
Δ9THC	Delta-9 Tetrahydrocannabinol	0.074	-	-	-	0.600	
THCA	Tetrahydrocannabinolic acid	0.074	-	-	-	ND	
CBD	Cannabidiol	0.074	-	-	-	16.6	
CBDA	Cannabidiolic acid	0.074	-	-	-	ND	
Δ8THC	Delta-8 Tetrahydrocannabinol*	0.074	-	-	-	ND	
THCV	Tetrahydrocannabivarin*	0.074	-	-	-	ND	
CBG	Cannabigerol*	0.074	-	-	-	14.9	
CBGA	Cannabigerolic acid*	0.074	-	-	-	ND	
CBC	Cannabichromene*	0.074	-	-	-	ND	
CBCA	Cannabichromenic acid*	0.074	-	-	-	ND	
CBN	Cannabinol	0.074	-	-	-	<LOQ	
Total THC	Δ9THC + (THCA × 0.877)		-	-	-	0.600	
Total CBD	CBD + (CBDA × 0.877)		-	-	-	16.6	
Total			-	-	-	32.1	


 Bryce Kidd, Ph.D.
 Lab Director


 Aaron Troyer
 Chief Science Officer





1055293-VOS-HSO-500-082520

Scientia LLC
ODA #: AG-R1055293IHH
314-401-2501

Sample Type: Tinctures
Sample Date: 8/27/2020
Analysis Date: 9/1/2020
Report Date: 9/3/2020

Metric Batch ID:
Metric Sample ID:

Harvest/Process Date: 8/26/2020
Report ID: LS-200903-32
Sample Plan ID:
Sample Procedure: 160721_LAB-SOP_SampleCollection-v008

Qualifier Flag Descriptions

- J Reported result is an estimate - the value is less than the minimum calibration level but greater than the estimated detection limit (EDL)
- U The analyte was not detected in the sample at the estimated detection limit (EDL)
- E Exceeds calibration range
- D Dilution data - result was obtained from the analysis of a dilution
- B Analyte found in sample and associated blank
- C Co-eluting compound
- R Relative Percent Difference (RPD) outside control limits
- NR Analyte not reported because of problems in sample preparation or analysis
- ND Non-Detect
- X Results from reinjection/repeat/re-column data
- EMC Estimated maximum possible concentration - indicates that a peak is detected but did not meet the method required criteria
- M Manual integration
- PS Peaks split
- HB Control acceptance criteria are exceeded high and the associated sample is below the detection limit
- LB Control acceptance criteria are exceeded low and the associated sample exceeds the regulatory limit
- ME Marginal Exceedance
- LR Low Recovery Analyte
- LOQ Limit of Quantitation