

## Drought Resistant Herds and Pastures

GWYMAC Inc



### Building Drought Resistant Herds and Robust Pastures

#### The issue

Due to many years of drought conditions and high rainfall deficiencies, the impact on graziers has been extremely high with affected productivity and production leading to a decline in stock numbers and depleted and stressed pastures and grasses. As a result, many discussions at landcare meetings have been focusing on how we can sustainably manage our farms going forward, particularly in drier conditions.

#### The solution

Gwymac Landcare partnered with the Bruderhof Community, Kit Pharo cattle company and Geoff Bassett from Farm Mojo to run a 'building drought resistant herds and robust pastures' workshop. The workshop is designed for graziers to focus on practice change in the future, to not only maintain production in the good seasons but to also manage farms over the drier conditions.

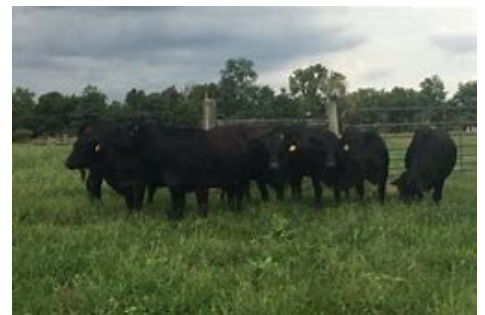
#### The impact

A one day workshop was held at the Bruderhof community at Danthonnia, Inverell. 78 participants from all over the state attended the day.

Participants were highly engaged with Kit Pharos' presentation titled 'Dare to be a herd quitter'. Kit advocates a different way of thinking outside of mainstream cattle production. The presentation included topics focusing on increasing production per acre not per animal and the benefits of moderate sized cattle that are grass based and genetics chosen for heat tolerance and hair coat, which are low input and easy fleshing.

Geoff Bassett from Farm Mojo presented on building robust pastures and participants learned about rotational grazing systems and management of grass production. Geoff discussed the benefits in creating robust pastures, how to get your soils right and the importance of biodiversity. He stressed the importance of starting on your best paddocks first, always using biological seed inoculants and liquid fertilisers and keeping active microbes in the soil structure which let air and water into the soil, thus capturing and storing more rainfall.

A great day was had by all with many inspired conversations at the end of the workshop. The catering presented by the Bruderhof community was impressive and delicious.



#### Key facts

- Grass based genetics is key
- Focus on \$ per acre not \$ per animal
- Increasing production per acre assists with increasing profits
- Healthy soils comes with biodiversity
- Active microbes benefit soil structure

#### Project Partners



This initiative made possible by the NSW Landcare Program. A collaboration of Local Land Services and Landcare NSW Inc. supported by the NSW Government.

