

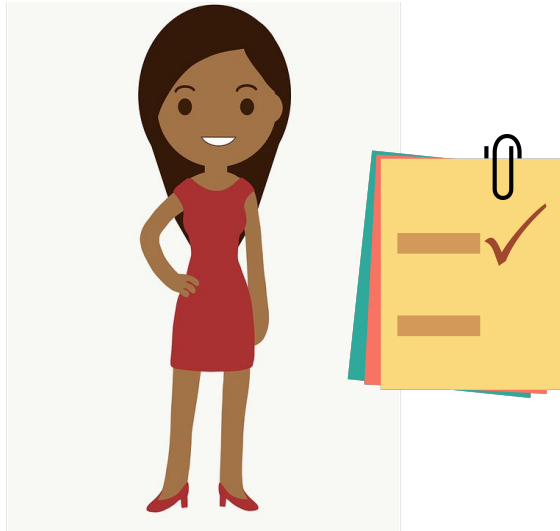


What can it do for you?

 **Ternary Security Model™**

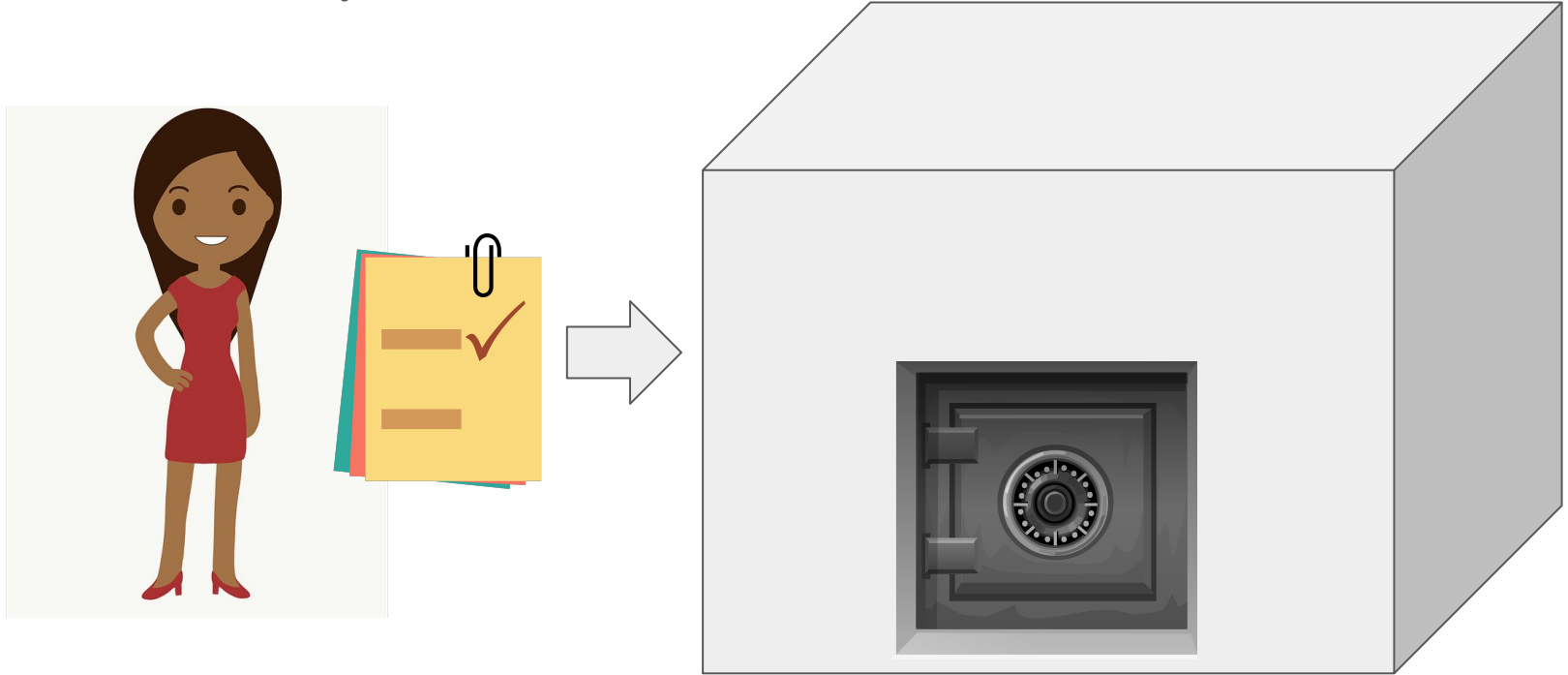
# Digital Lockboxes

When it comes to protecting data...



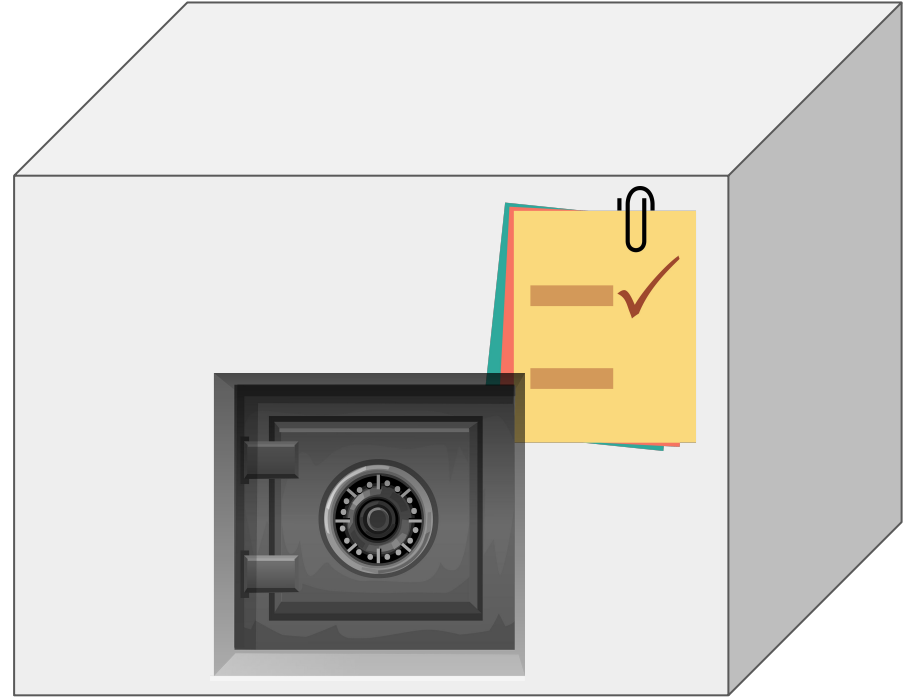
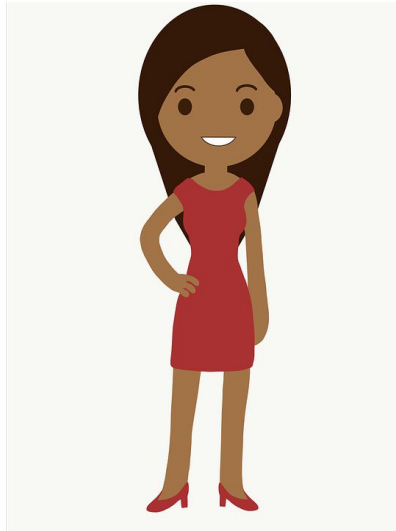
# Digital Lockboxes

Digital lockboxes are very secure



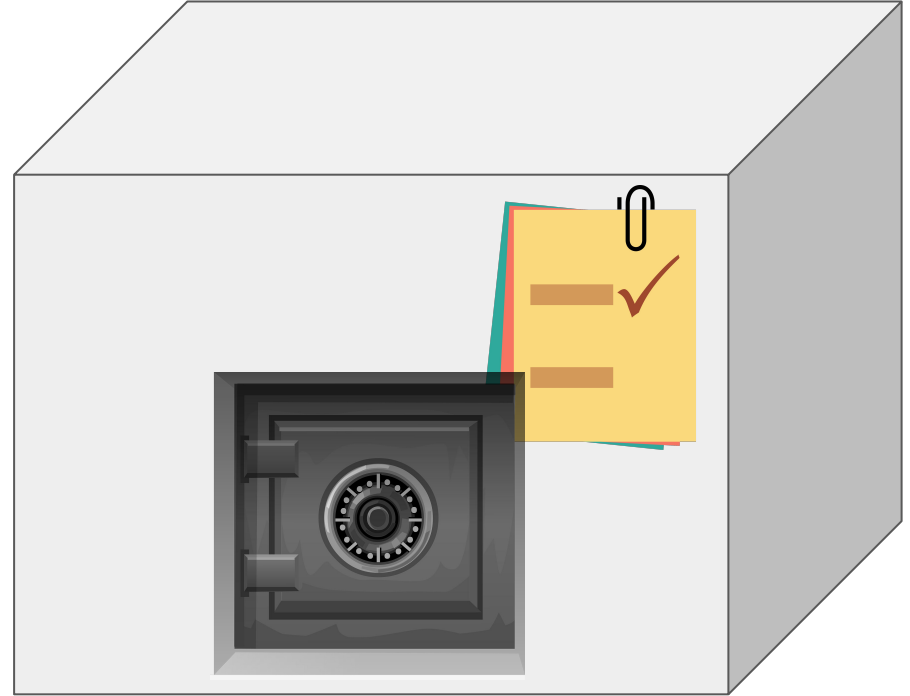
# Digital Lockboxes

At protecting digital assets



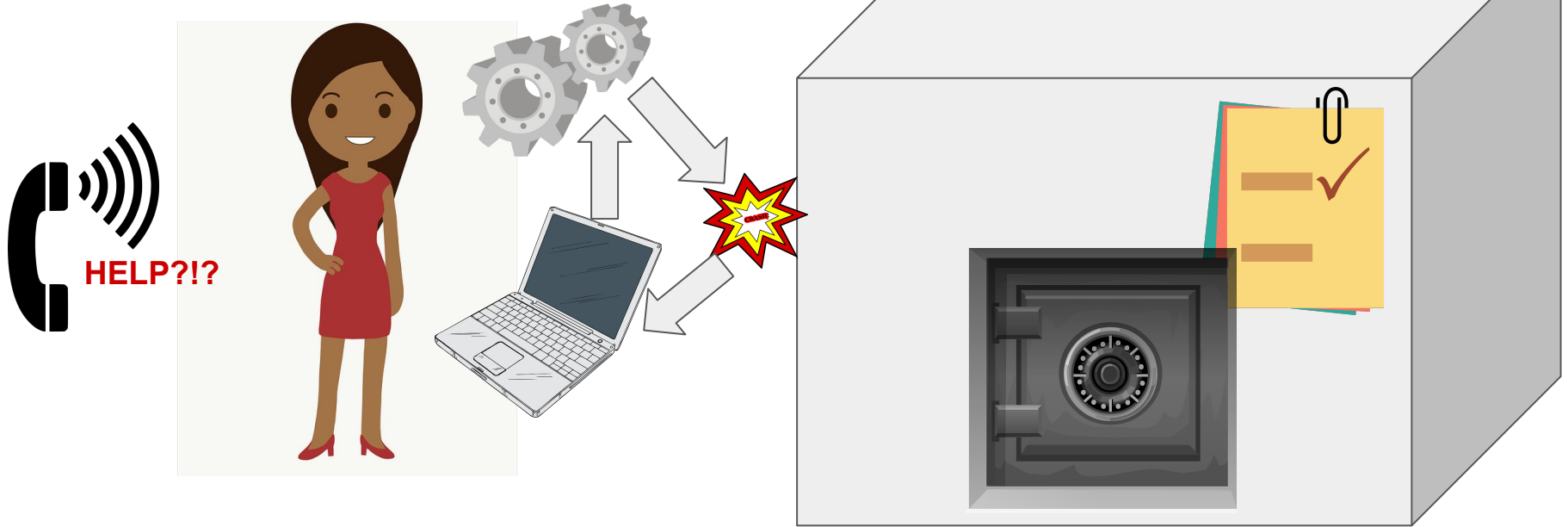
# Digital Lockboxes

But can be hard to work with when data is needed...



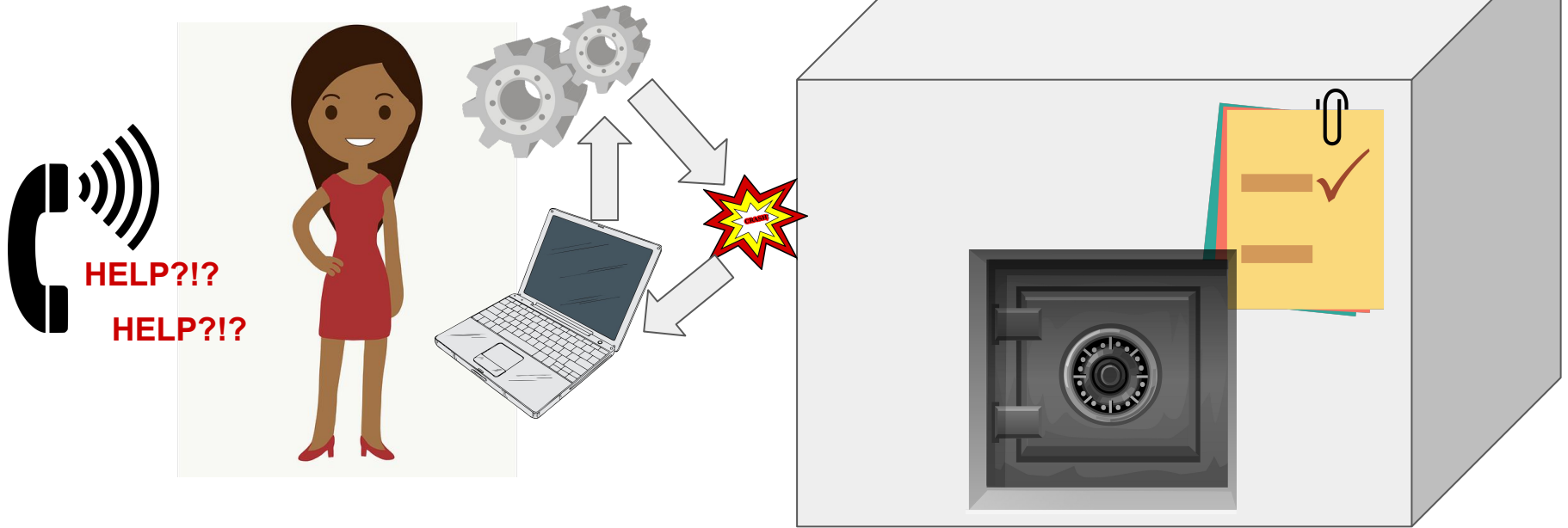
# Digital Lockboxes

Because they are typically not very auto-interactive...



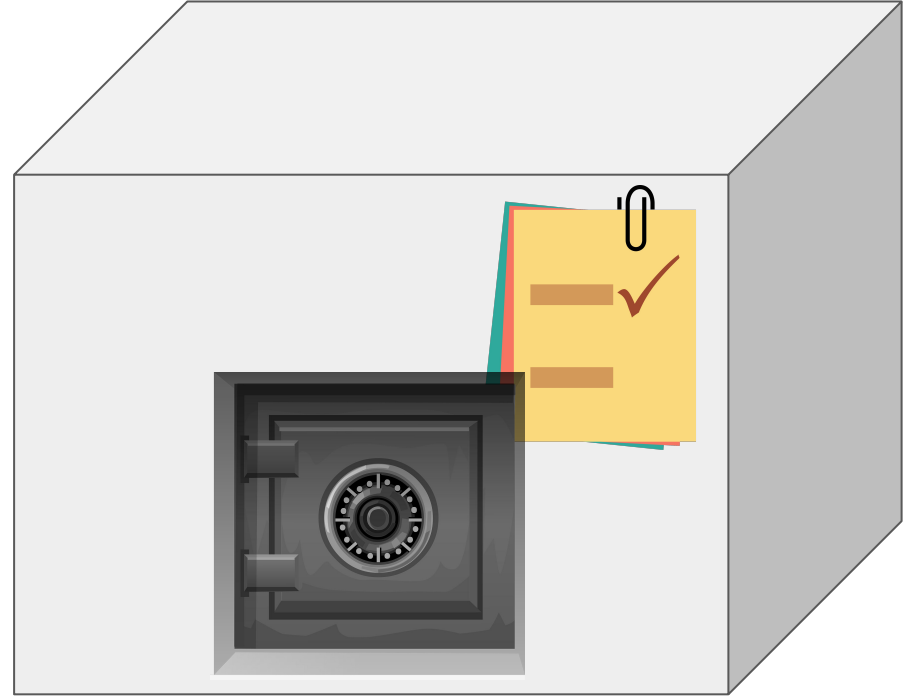
# Digital Lockboxes

And not easy to open up for use...



# Digital Lockboxes

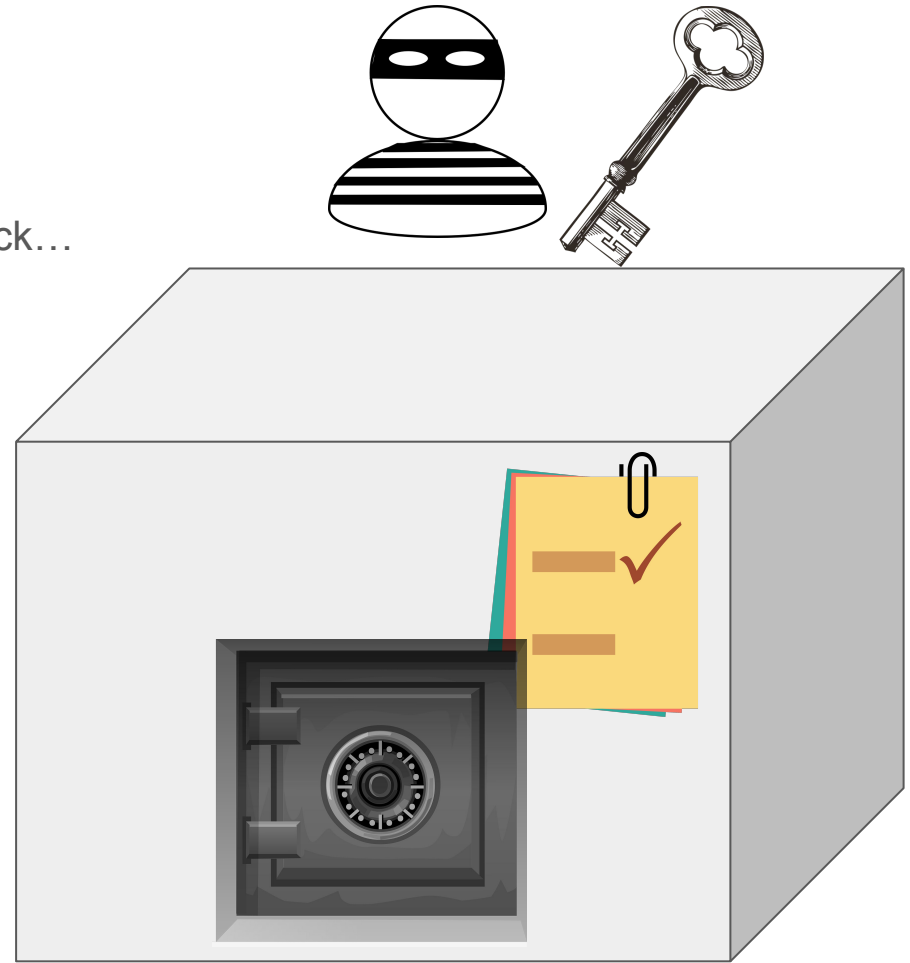
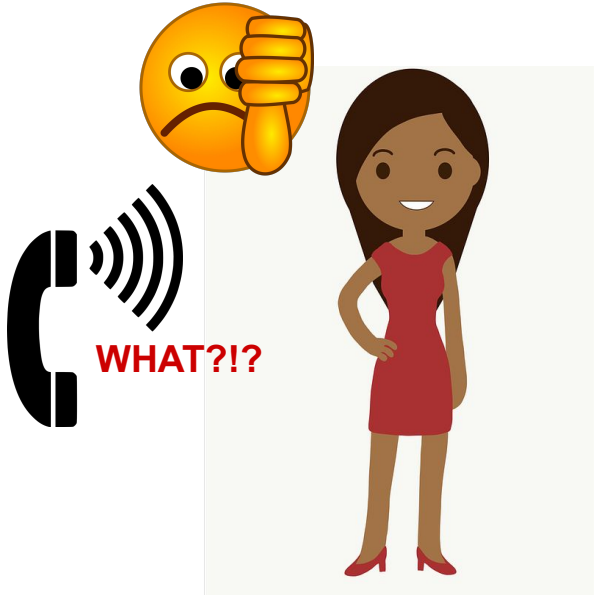
Without manual intervention with the key...



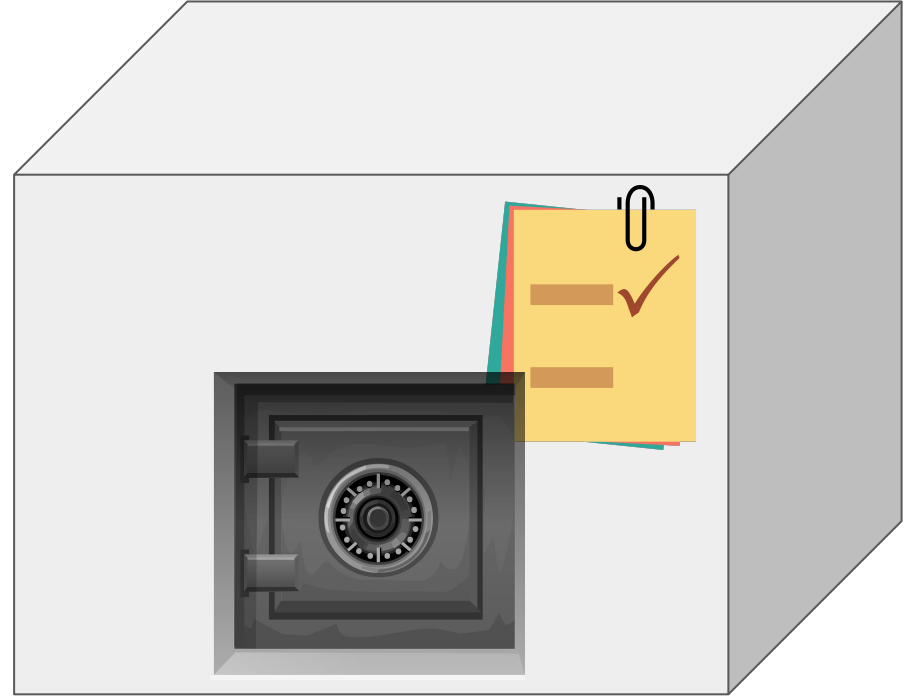
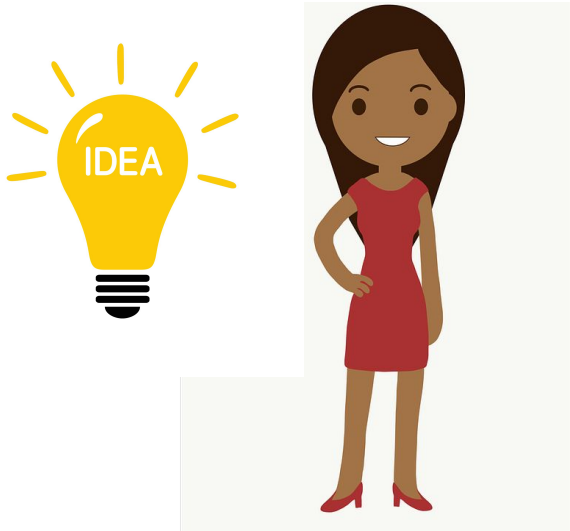


# Digital Lockboxes

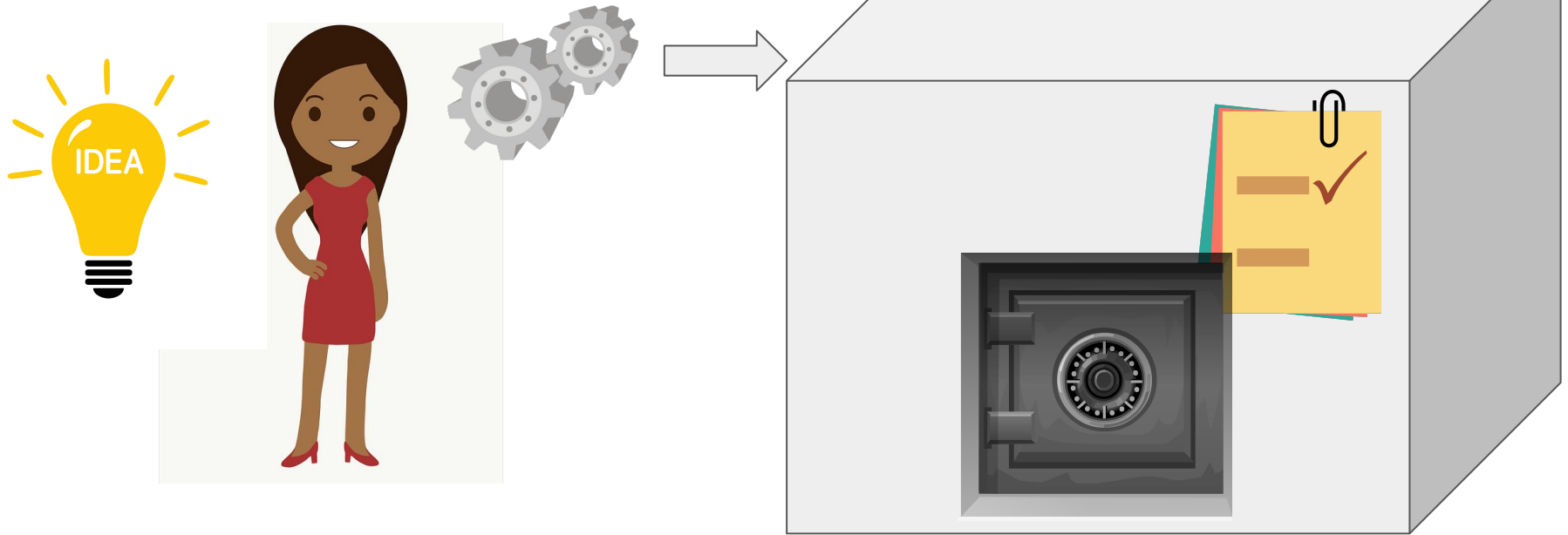
Which also makes them vulnerable to inside attack...



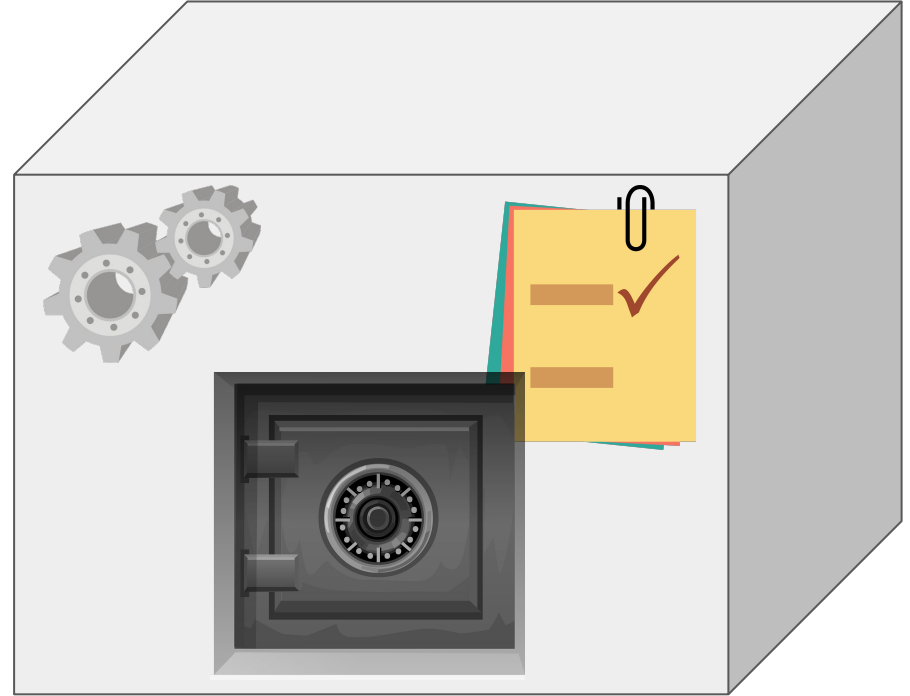
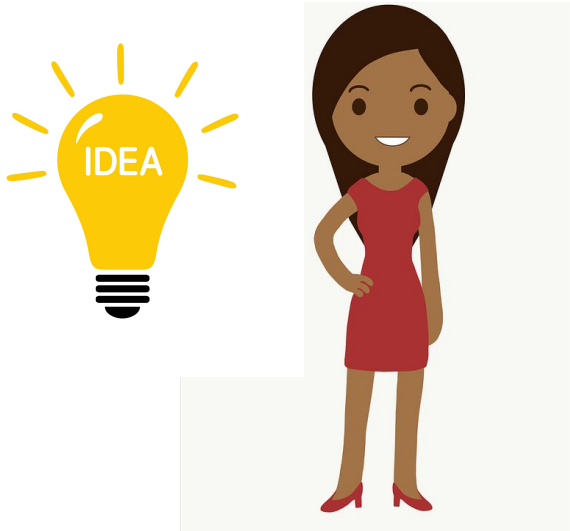
But what if you could customize your lockbox...



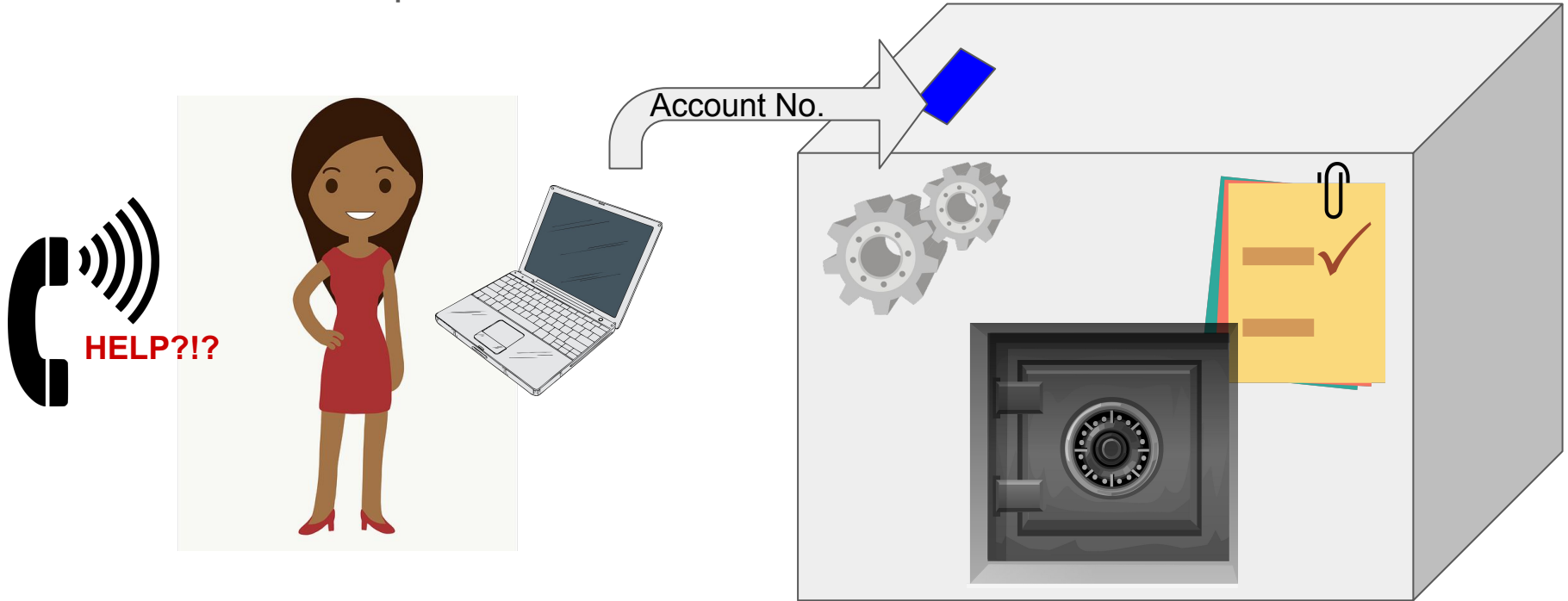
To make it interactive



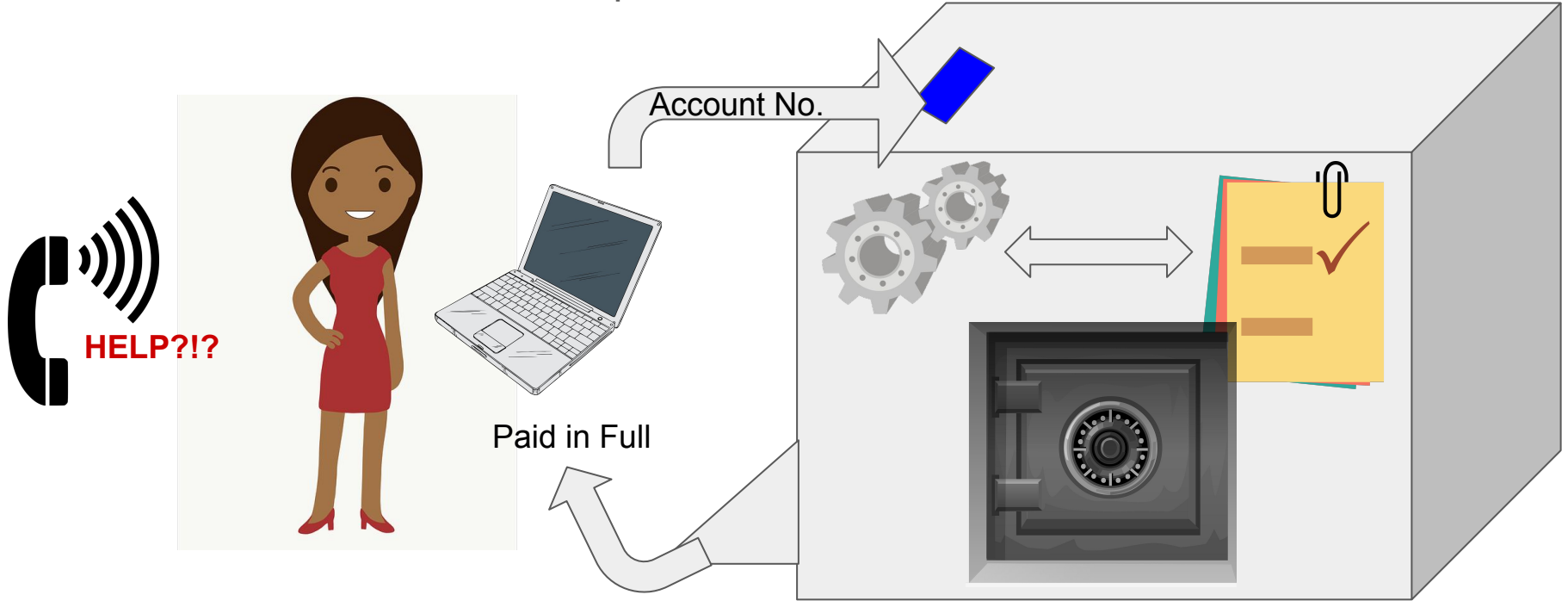
With your logic and AI inside...



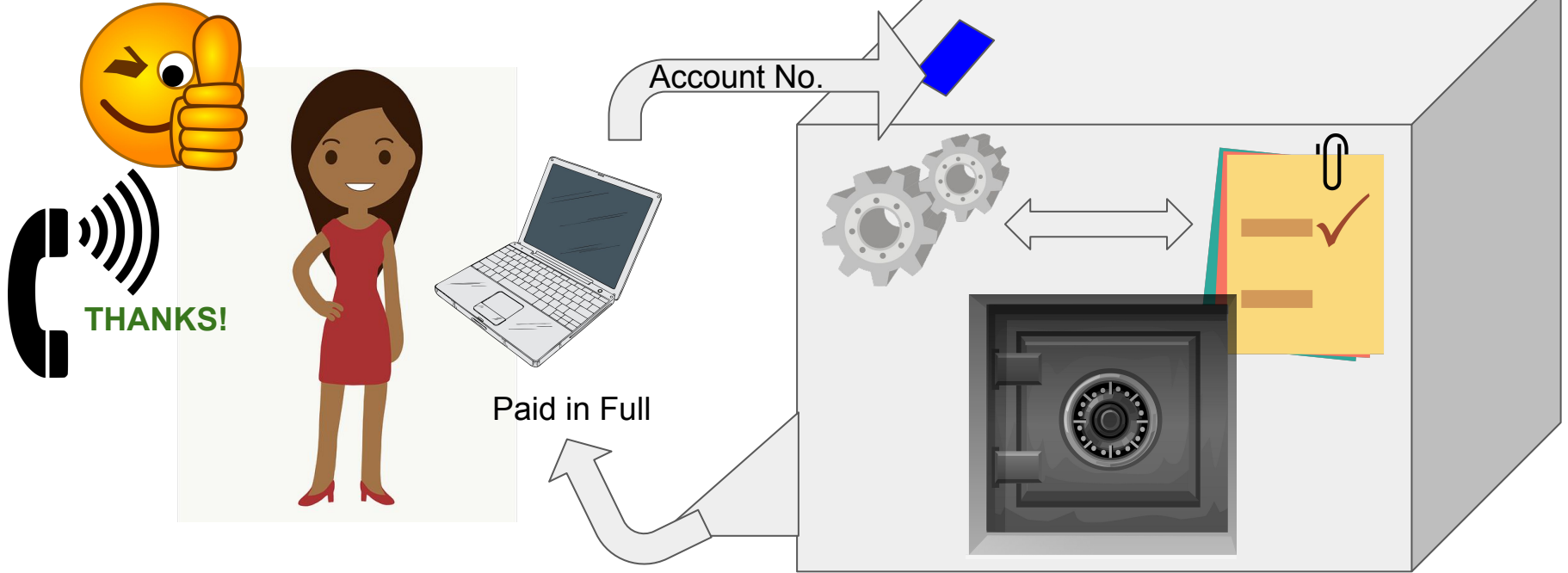
And customizable inputs...



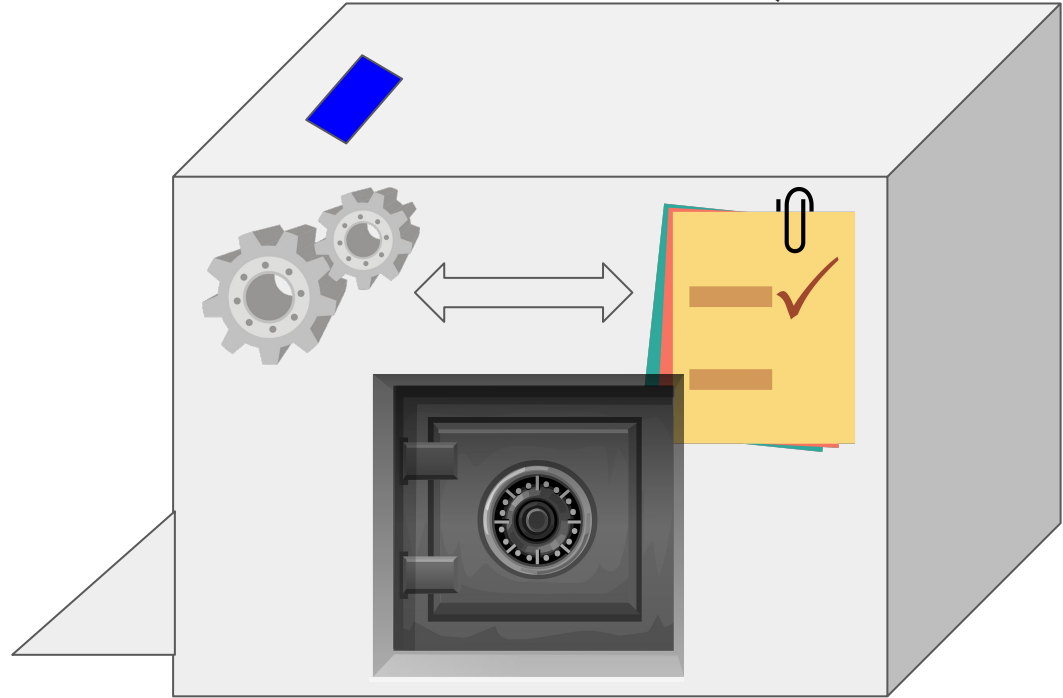
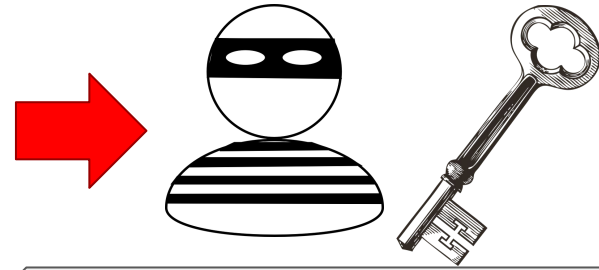
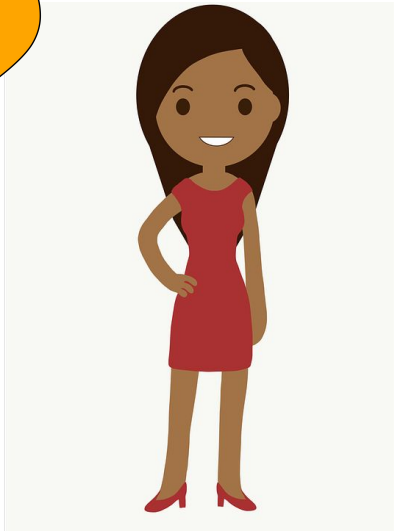
To return actionable but safe outputs..



Without requiring the key or manual intervention...

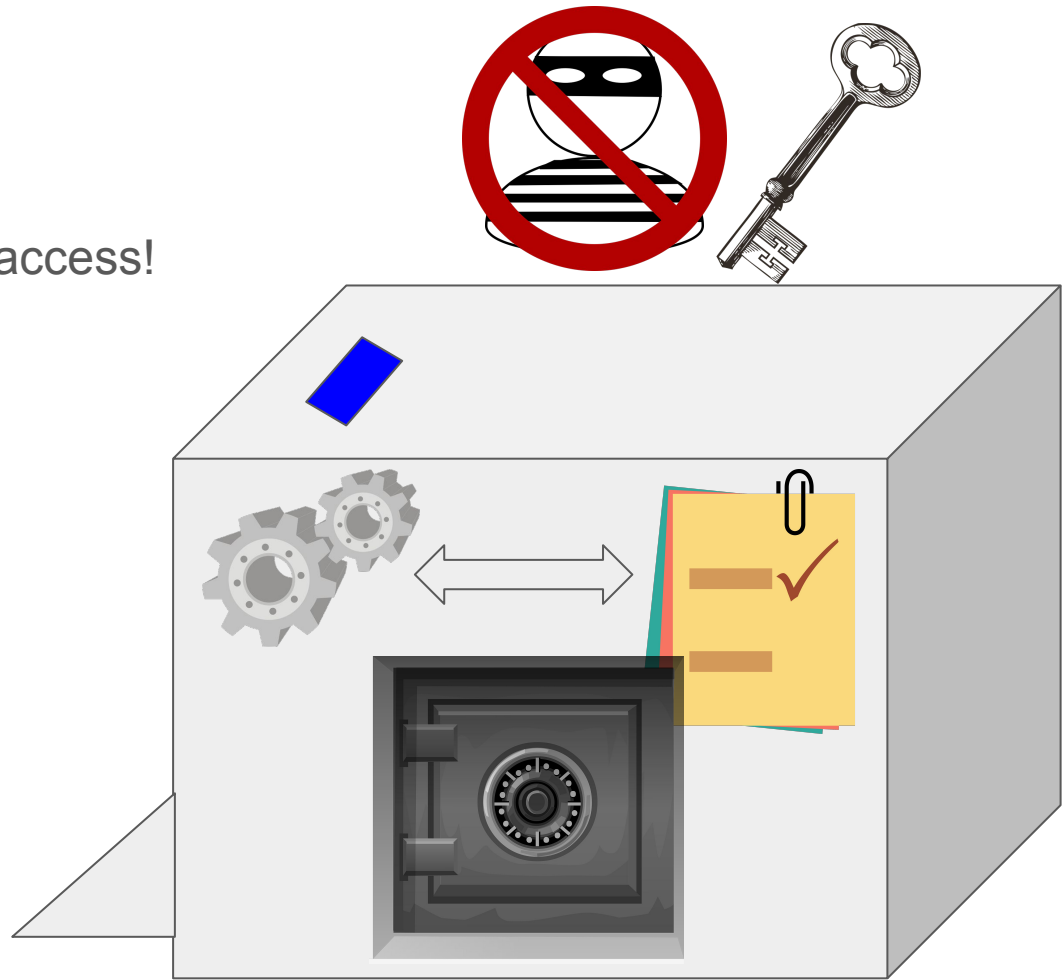
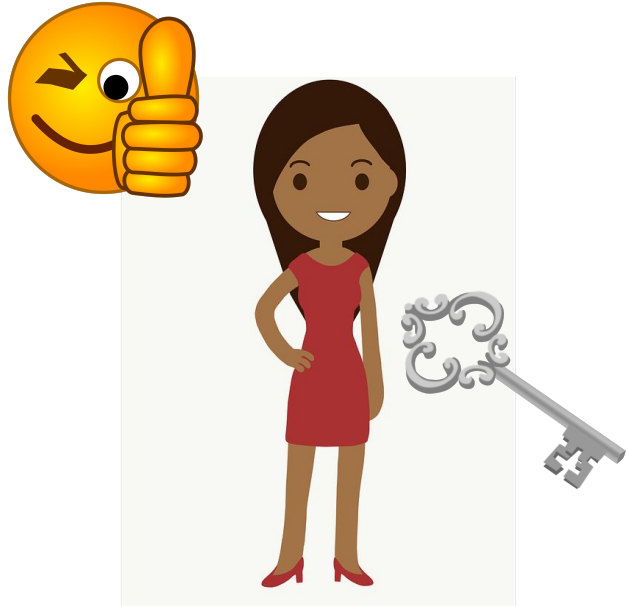


But what about those **insider threats**?



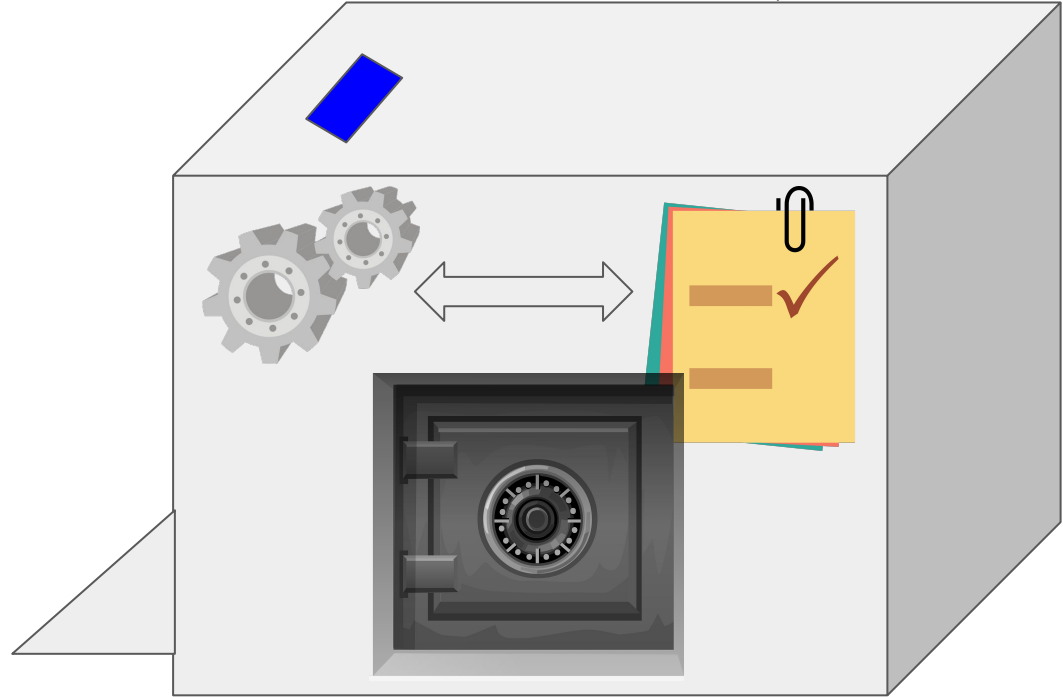
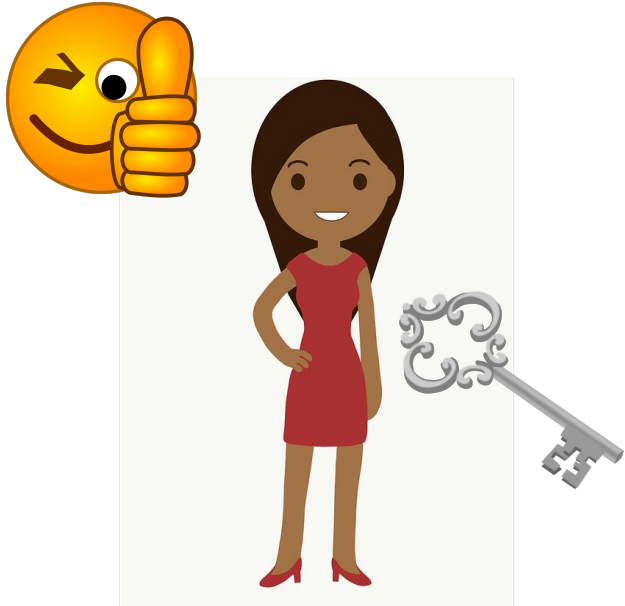


You can require **multiple keys** to access!

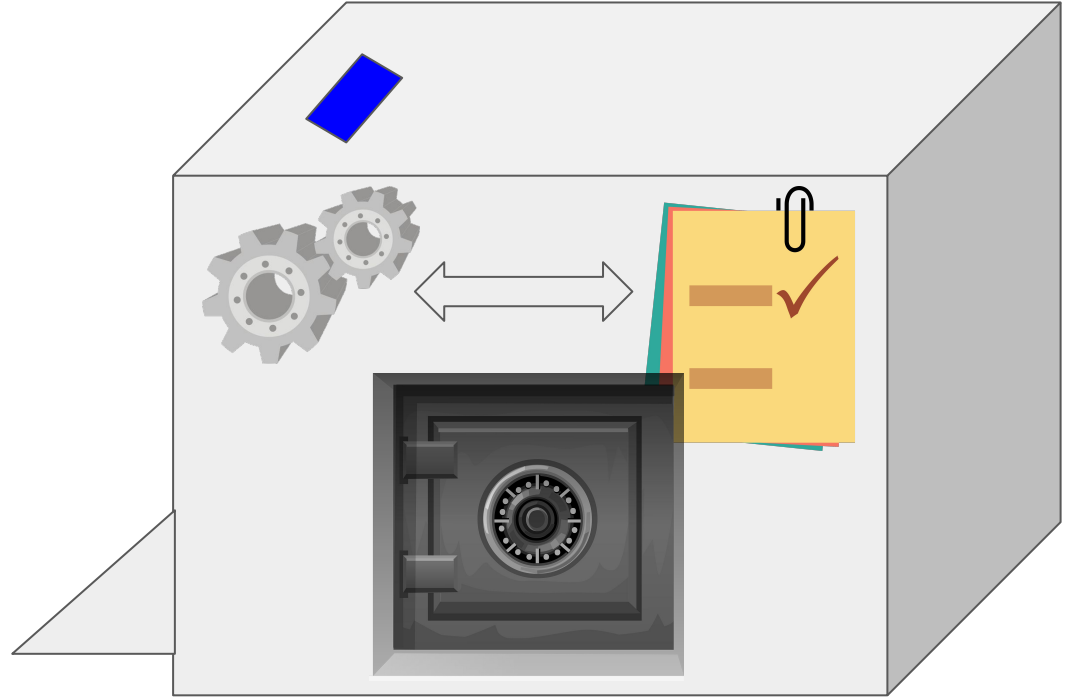
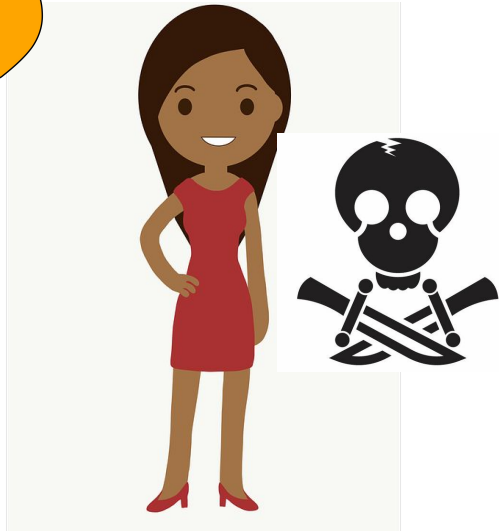




Residing in **separate Domains** if needed...

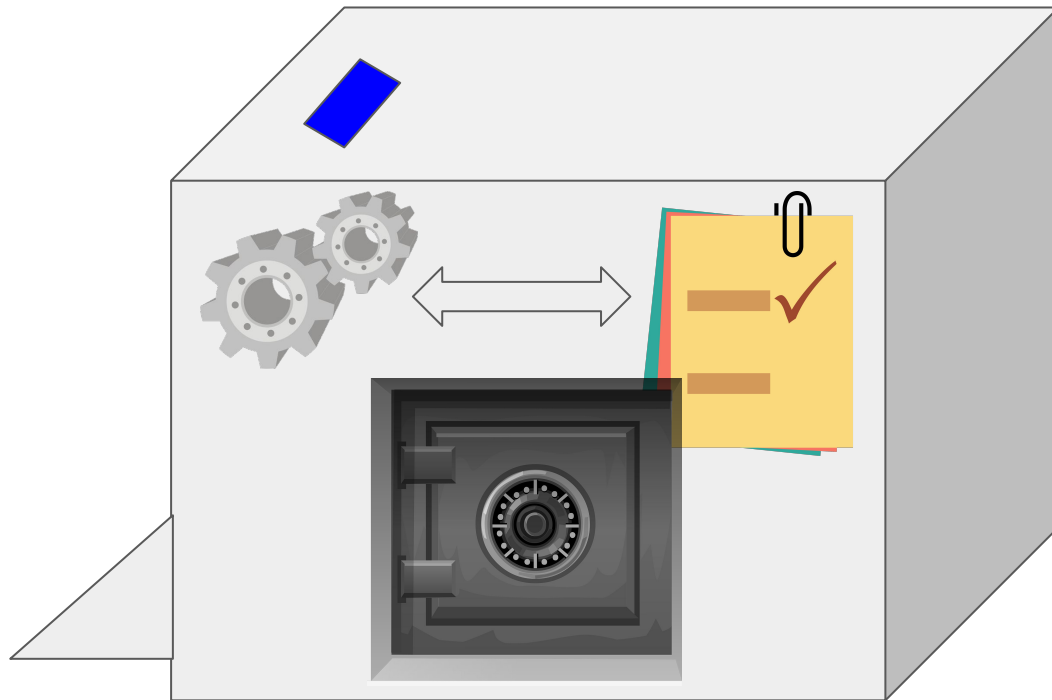


What about **Ransomware**?



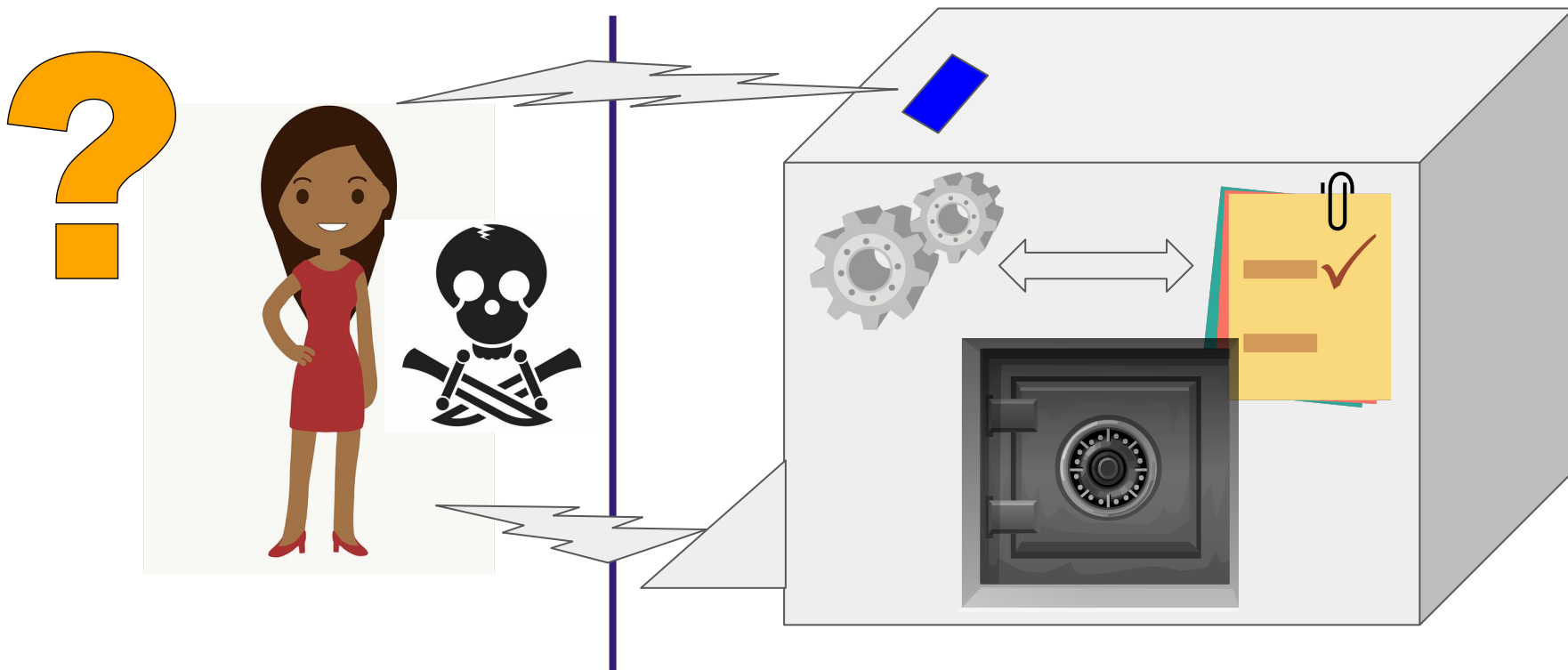
1. With the TSM Lockbox multi-domain option...

What about **Ransomware**?



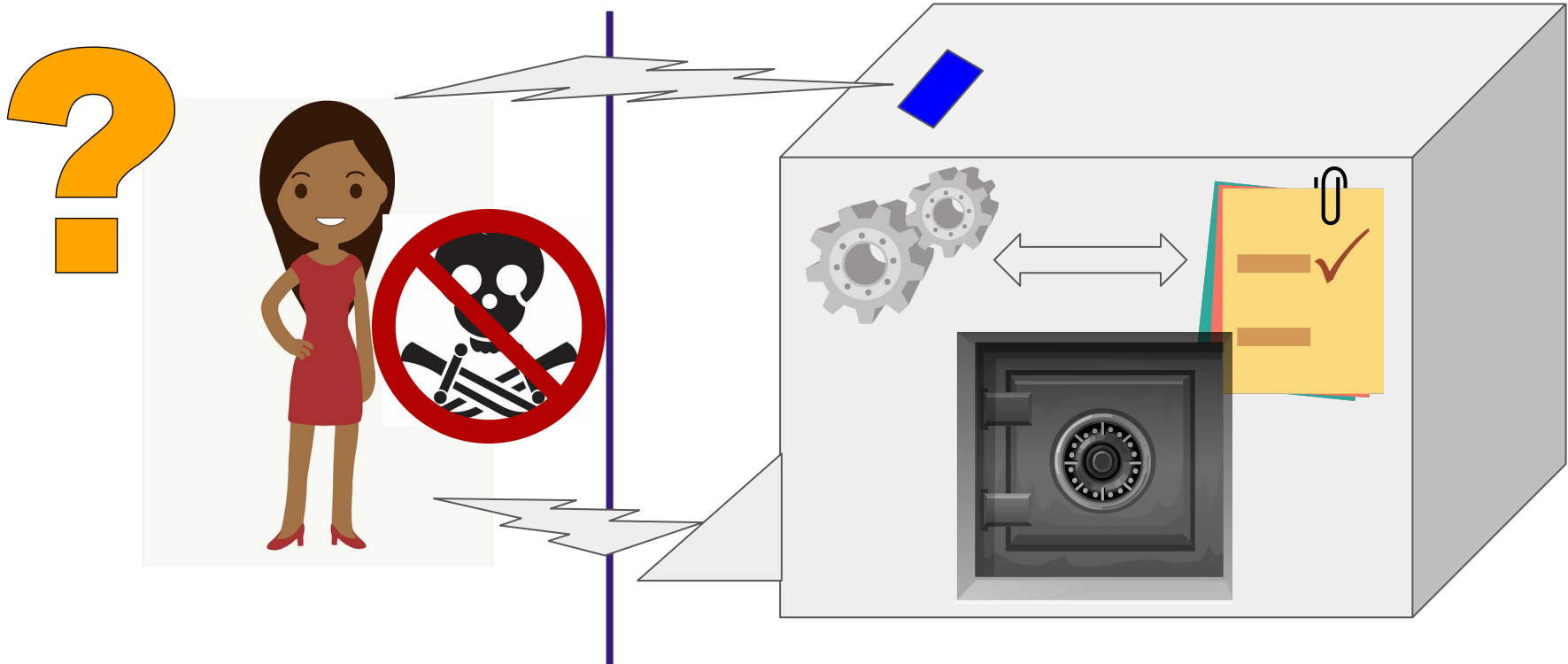
1. With the TSM Lockbox multi-domain option...
2. Requiring minimal access for safe inputs and outputs...

What about **Ransomware**?



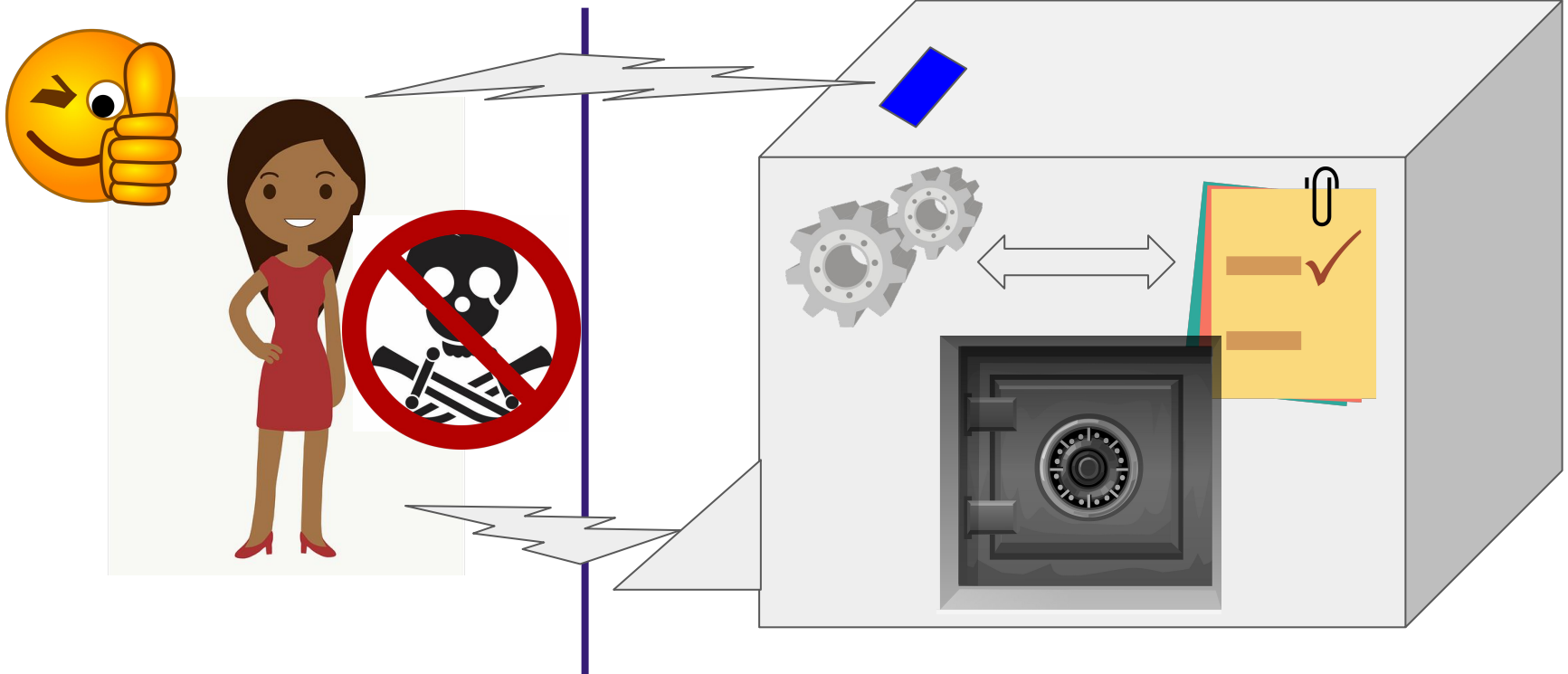
1. With the TSM Lockbox multi-domain option...
2. Requiring minimal access for safe inputs and outputs...
3. Important systems can be kept safe from Ransomware attacks

What about **Ramsomware**?

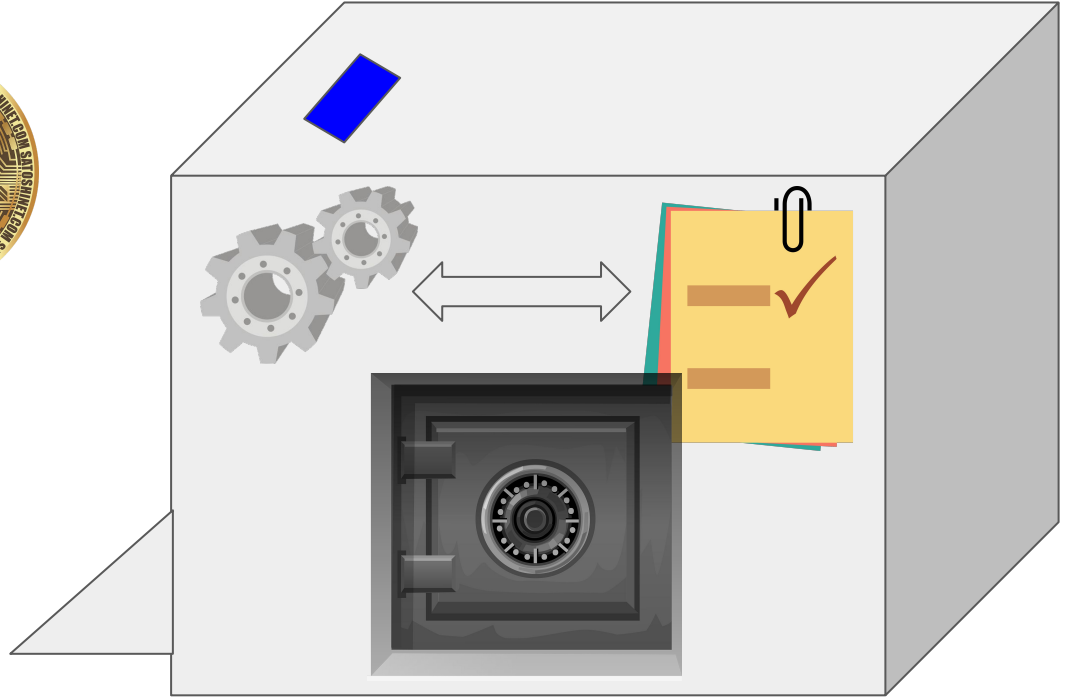
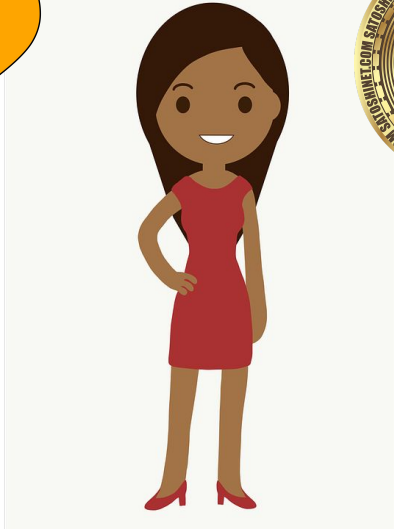


1. Due to the TSM Lockbox multi-domain option...
2. Requiring minimal access for safe inputs and outputs...
3. Important systems can be kept safe from Ransomware attacks
4. While also providing the backups to quickly get you back up and running

What about **Ramsomware**?



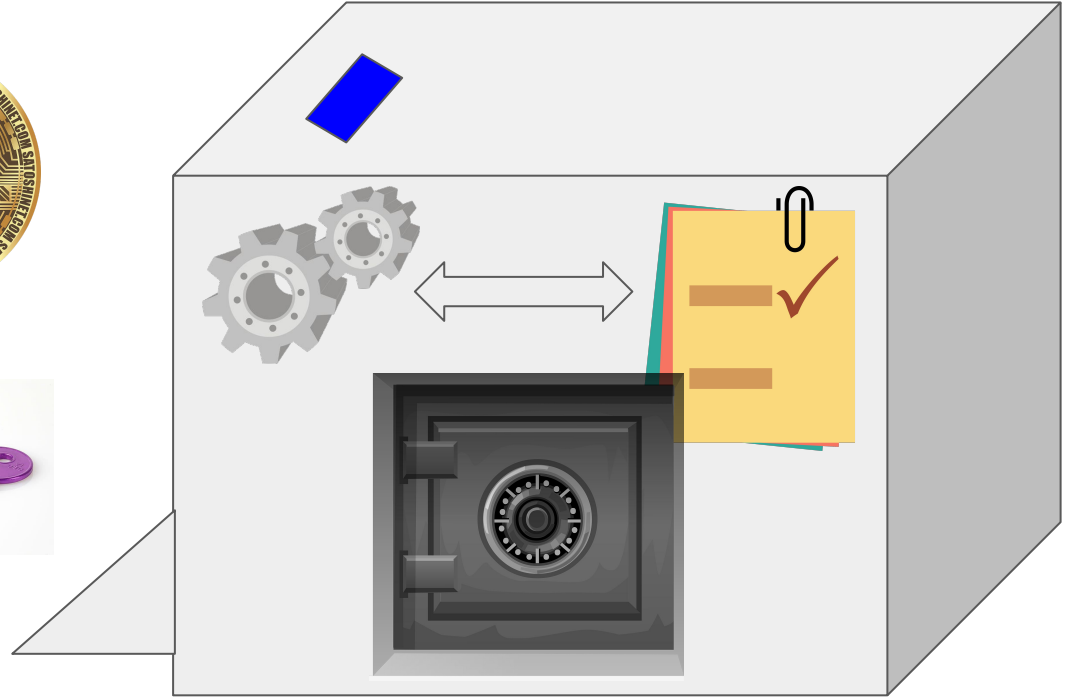
What about **Crypto**?





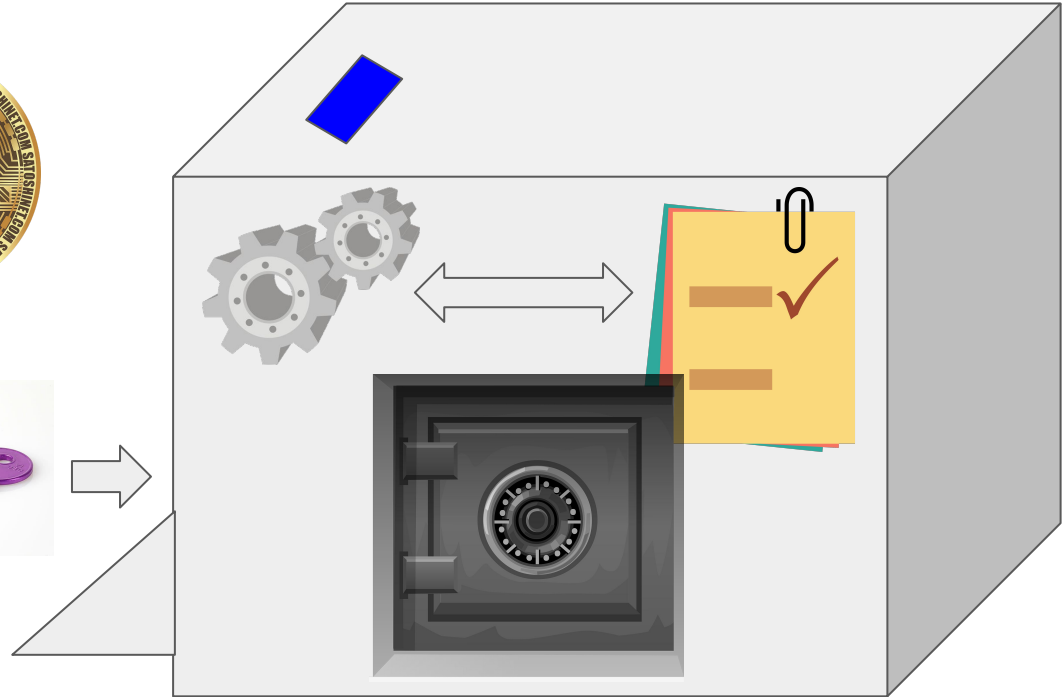
1. Most Crypto heists come from stealing the Crypto Keys

What about **Crypto**?



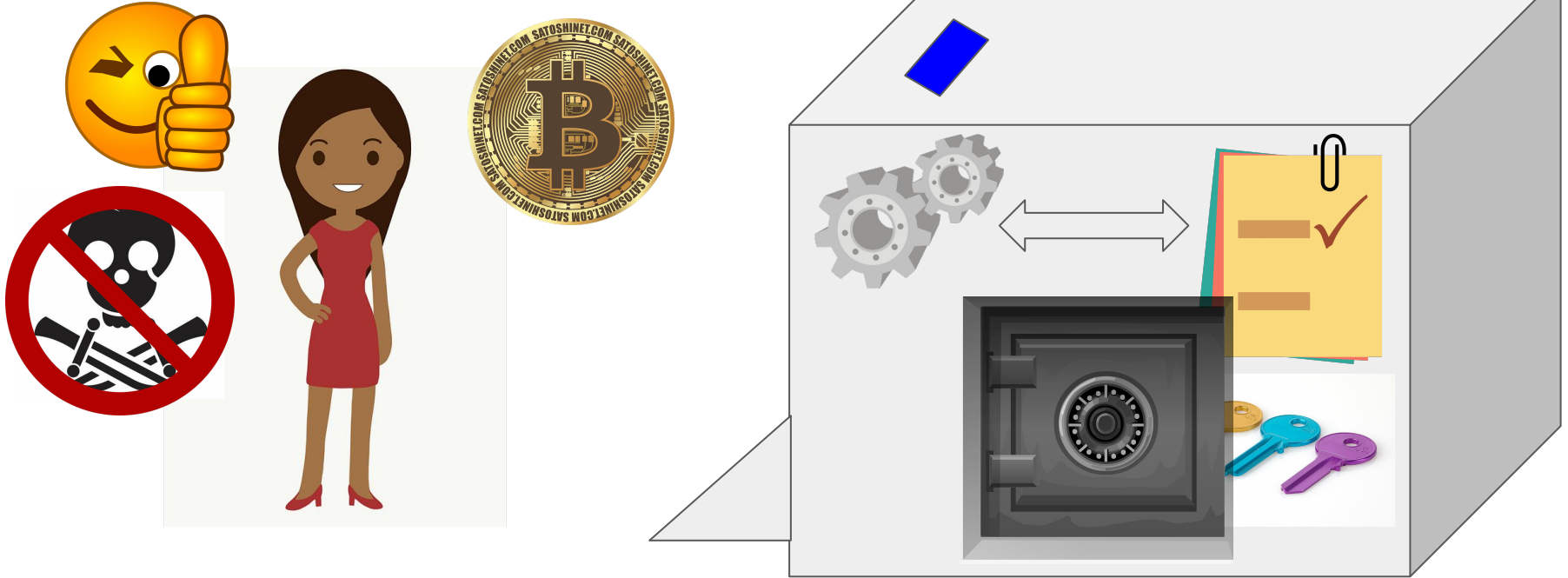
1. Most Crypto heists come from stealing the Crypto Keys
2. These keys can also be stored in a TSM Lockbox

What about **Crypto**?



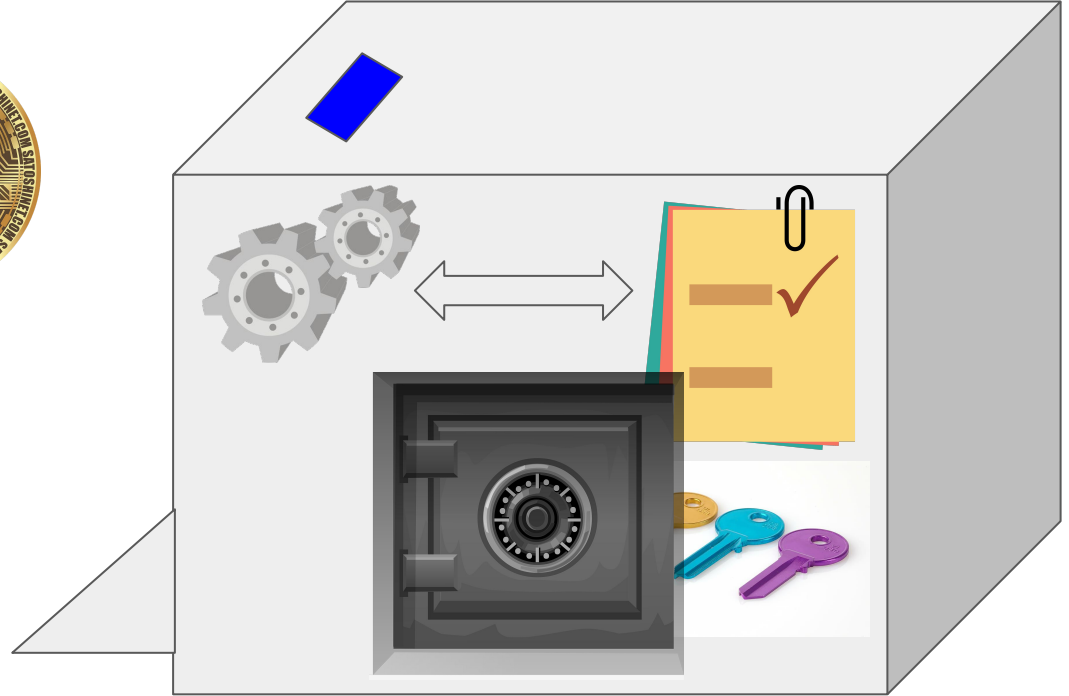
1. Most Crypto heists come from stealing the Crypto Keys
2. These keys can also be stored in a TSM Lockbox
3. Where they are safe from Ransomware

What about **Crypto**?



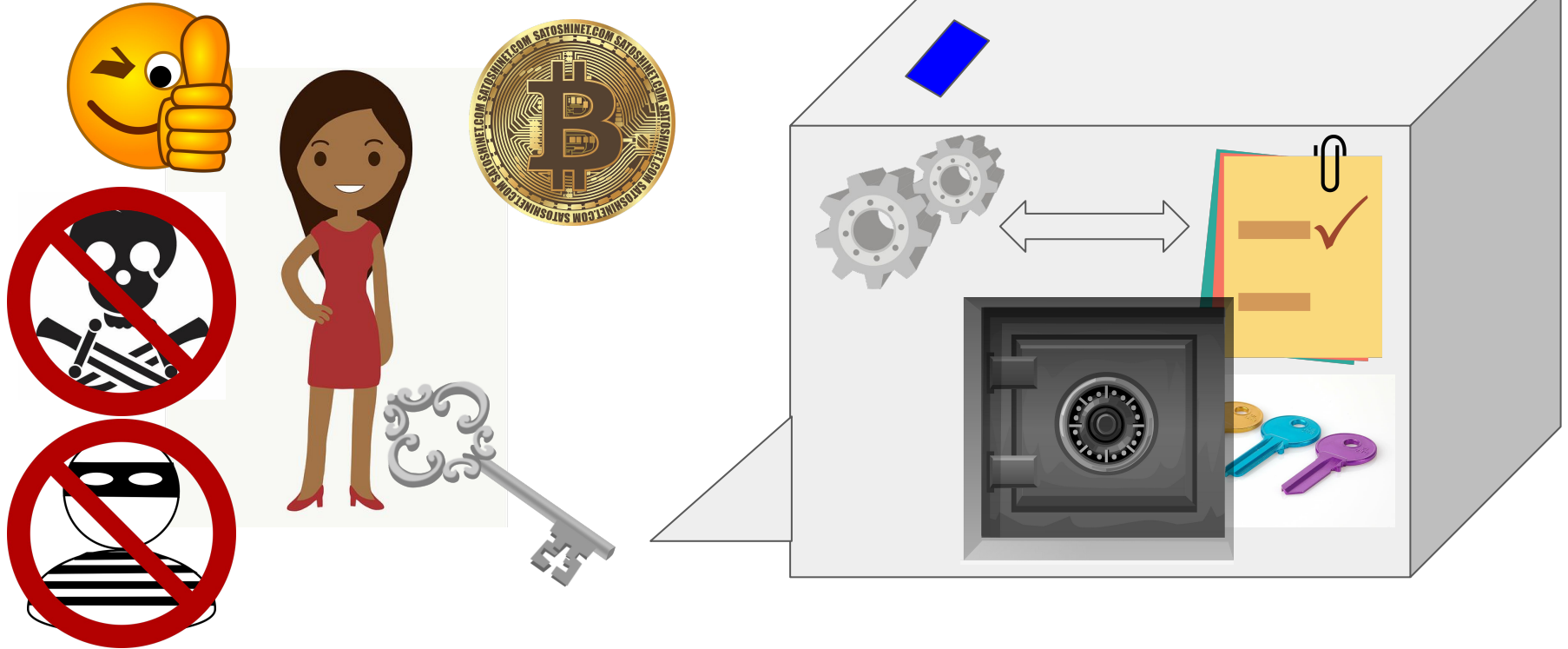
1. Most Crypto heists come from stealing the Crypto Keys
2. These keys can also be stored in a TSM Lockbox
3. Where they are safe from Ransomware
4. And heists

What about **Crypto**?



1. Most Crypto heists come from stealing the Crypto Keys
2. These keys can also be stored in a TSM Lockbox
3. Where they are safe from Ransomware
4. And heists - **because you hold the key!**

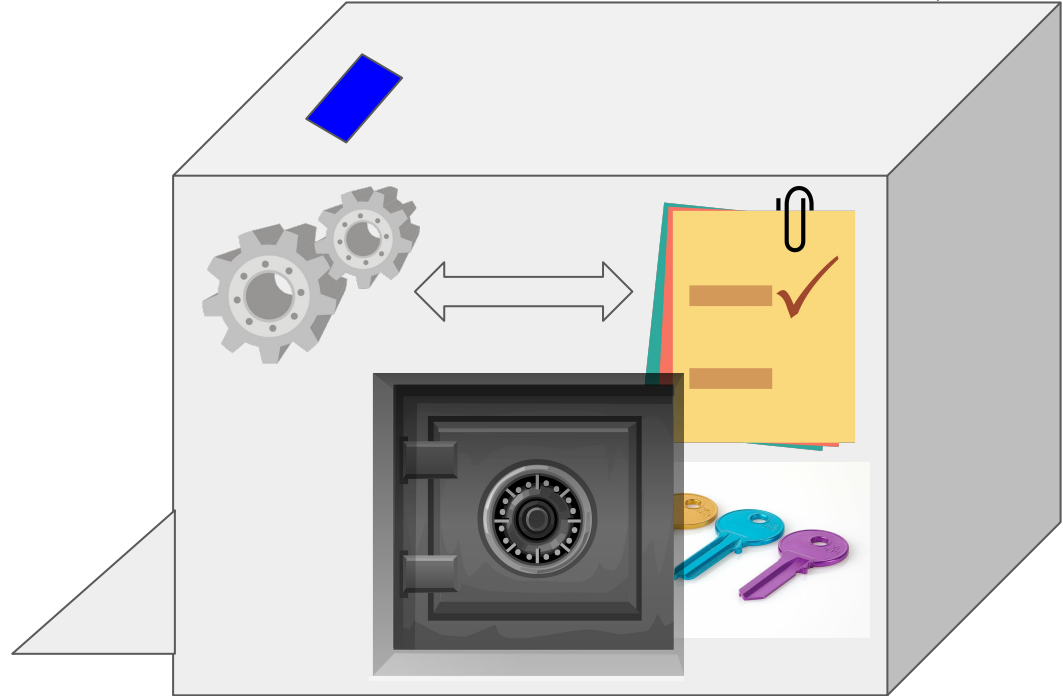
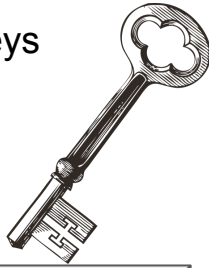
What about Crypto?



## What about Crypto?

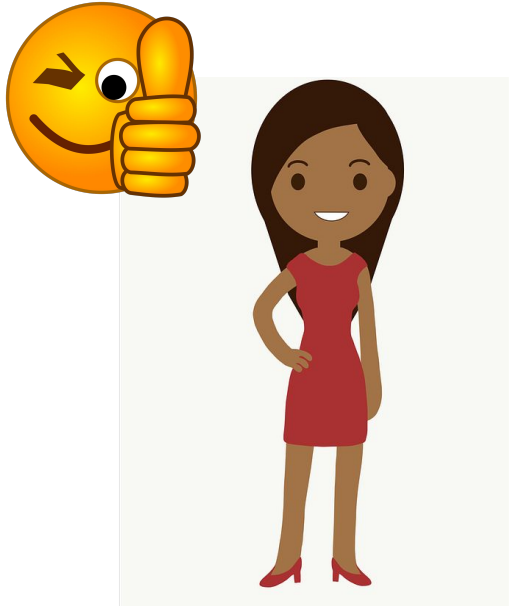


1. Most Crypto heists come from stealing the Crypto Keys
2. These keys can also be stored in a TSM Lockbox
3. Where they are safe from Ransomware
4. And heists - **because you hold the key!**
5. **And can require multi-domain keys for access!!**



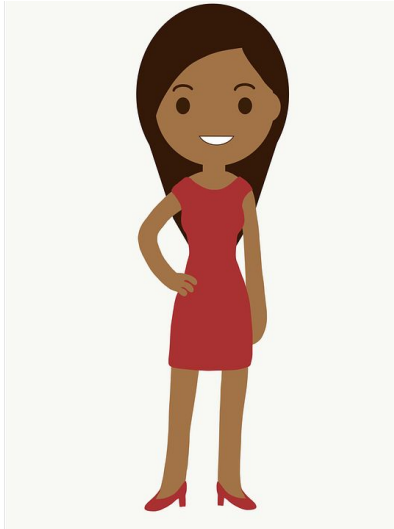


Ready to learn more about the TSM Cyber SCIF?





Visit us today...



**Visit:** [ternarysecuritymodel.com](http://ternarysecuritymodel.com)

**Contact:** [info@jjdsoftware.com](mailto:info@jjdsoftware.com)

