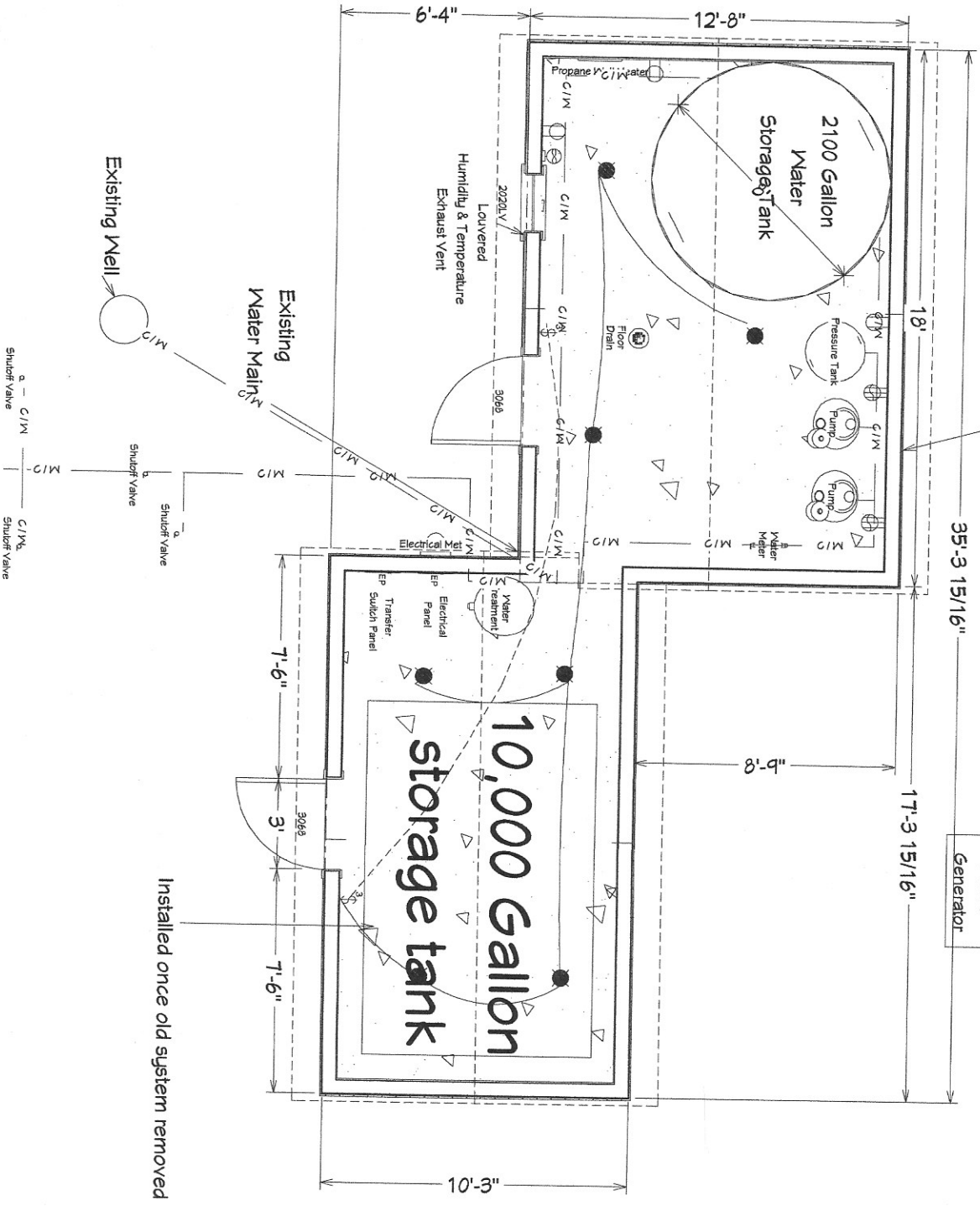


Addition to Existing Pump House

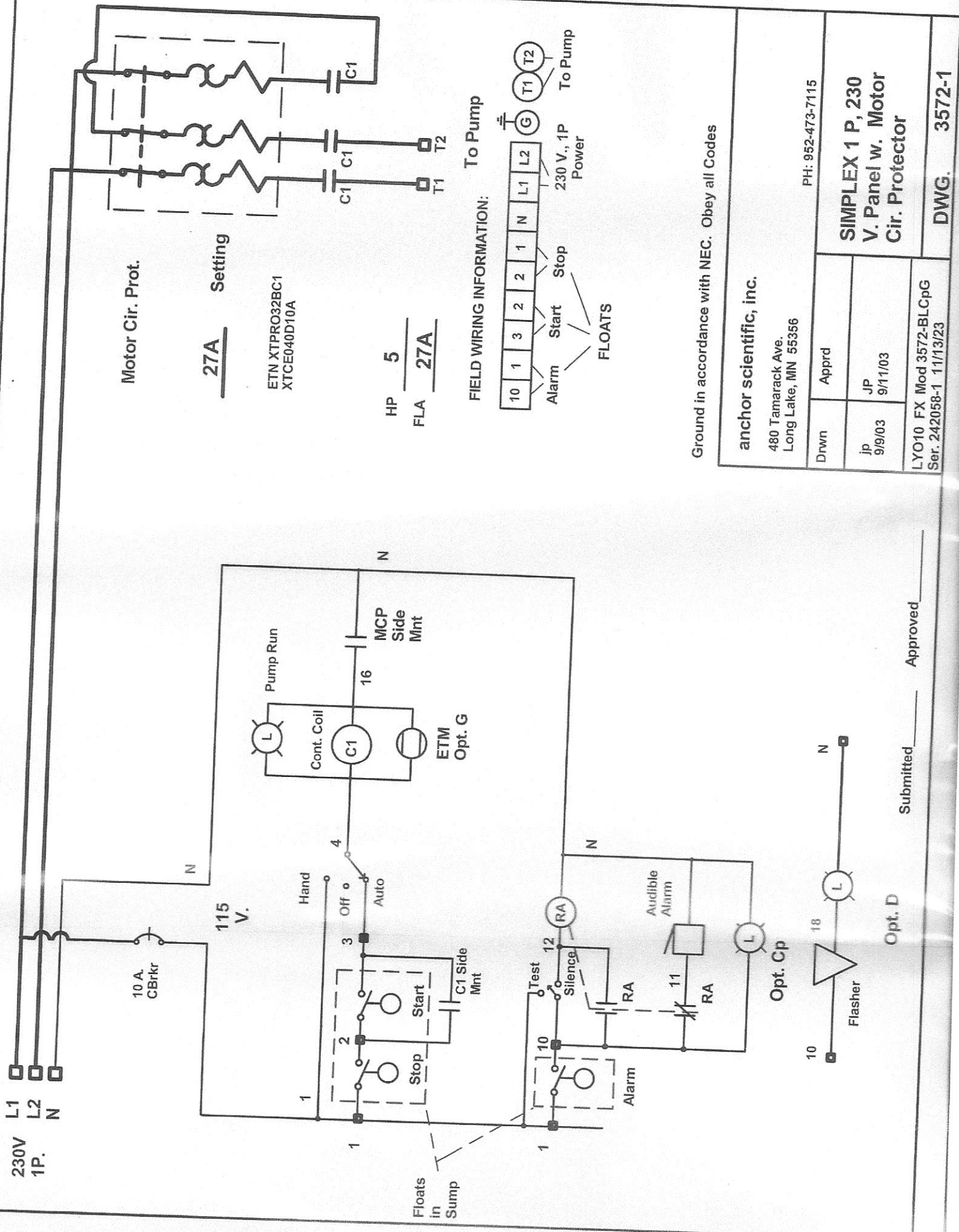
Existing Pump House

Future Generator

- NOTES:**
- Pumps: Goulds
Gou225V3NH4C60
7.5 HP, 230V, 3 phase
 - Controllers: Goulds
GOUAVA10075C0FOXOX1 VDF
 - Well pump controller: Anchor Scientific simplex controller Model 35T2.5 HP, 230 V single phase with high/low level alarm and elapse time meter
 - 3" Water line
 - 220V Three Phase outlet
 - 110V Duplex outlet
 - Three Way Switch
 - Ceiling lights



Installed once old system removed



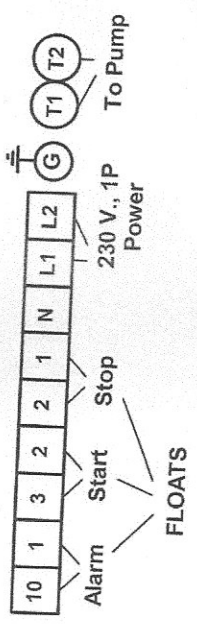
Motor Cir. Prot.

27A Setting

ETM XTPRO32BC1
XTCE040D10A

HP 5
FLA 27A

FIELD WIRING INFORMATION:



Ground in accordance with NEC. Obey all Codes

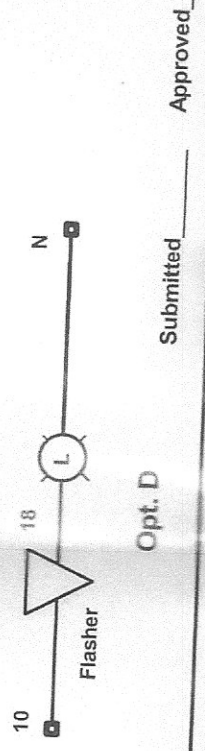
anchor scientific, inc.
480 Tamarack Ave.
Long Lake, MN 55356

PH: 952-473-7115

Dwnn	Apprd
JP 9/9/03	JP 9/11/03
LYO10 FX Mod 3572-BLCpG Ser. 242058-1 11/13/23	

**SIMPLEX 1 P, 230
V. Panel w. Motor
Cir. Protector**

DWG. 3572-1



Submitted _____ Approved _____



