



Waste Management answers questions from your community.

Question: I noticed a lot of trucks and activity in my neighborhood ,what has happened?

As you know, Waste Management services your community. Each year we put many miles on our trucks and haul tons of waste. We purchase the toughest trucks in the industry, however as tough as our trucks are, we do have mechanical malfunctions. Some of those malfunctions are the occasional oil or a hydraulic line breaking. When an oil or hydraulic line breaks, Waste Management and Collier County send special teams to assess and remedy the situation as smoothly as possible. This is the reason for all the activity in your neighborhood.

Question: So, what is going to happen now?

Waste management's cleanup team is working at this moment to remove the spill.

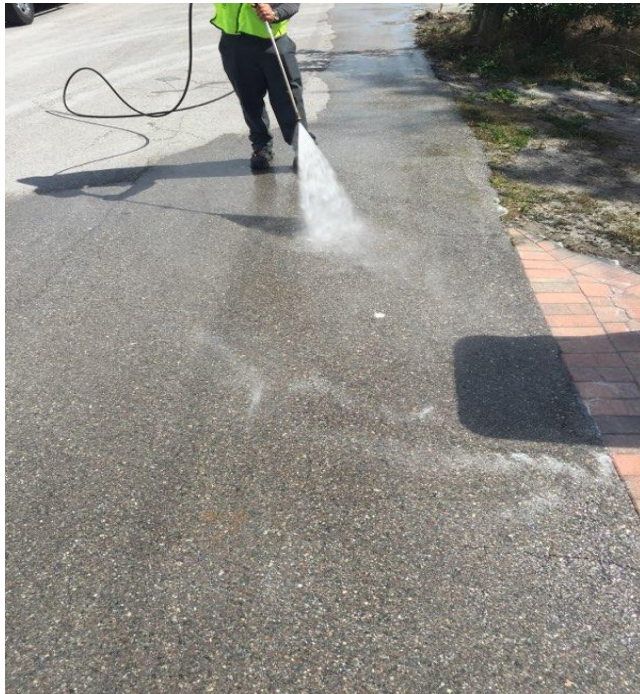
Question: How are they going to clean up the spill?

The cleanup process is in three phases.

Phase one, a powder absorbent is applied to all pooling fluids. The absorbent is crushed and brushed into the liquid and is absorbed. By the end of day one and phase one, all actual fluids and absorbents are responsibly removed from the property and all that remains is a stain on the surface of the asphalt.



Phase two, to remove the stains, Waste Management uses a very mild biodegradable soap. In many ways, it is similar to Dawn dishwashing liquid. This soap is designed to gently lift the stain slowly over a longer period of time, rather than harsh chemicals that are quicker, not biodegradable and would break down the composition of the asphalt. Waste Management has been doing this for many years and when it comes to removing stains from asphalt, pavers, or cement, gentle soap and time produces the best results.



Question: *The stain looks darker now than it did in the beginning of the process, what is going on?*

You are correct, the stain will appear darker for short period time. When the soaps are exposed to sunlight, heat and the stain itself, the soap reacts by turning a dark brown. This is only temporary and will fade over the next few weeks.

After the brown appearance of the soap fades, a slight remnant of the stain will remain but the soap will continue to work over the next few weeks.

Phase three, the soap cannot be applied again for least 30 days or we risk breaking down the composition of the asphalt. After 30 days, we do a follow-up inspection and reapply the soap if necessary. As the weeks pass you will notice the stain becoming lighter and will

eventually disappear. Depending on follow-up applications that can be anywhere between one and four months.

In short, it is a slow process but one that works.

We apologize for the inconvenience and thank you for your patience.

Below is some before and after photographs

