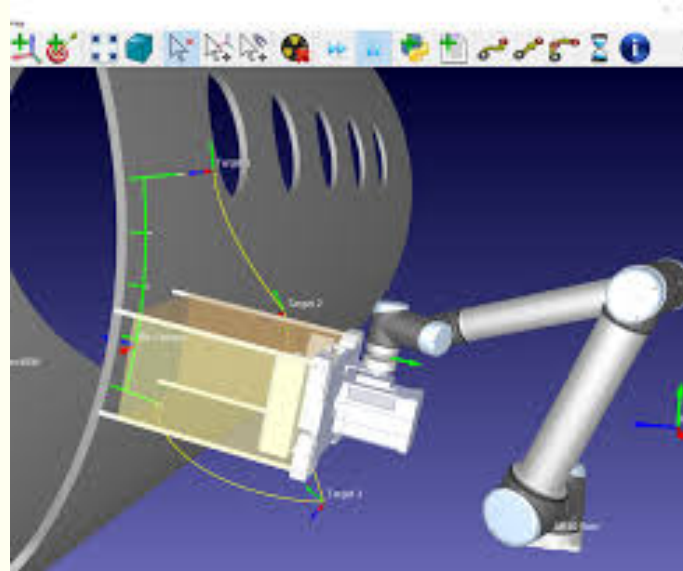


INTRODUCING



OFFLINE PROGRAMMING AND SIMULATION
SOFTWARE FOR INDUSTRIAL ROBOTS



KEY POINTS

Robot Machining

Use your robot arm like a 5-axis milling machine (CNC) or a 3D printer. Simulate and convert NC programs to robot programs (G-code or APT-CLS files). RoboDK will automatically optimize the robot path, avoiding singularities, axis limits and collisions

Offline Programming Software

Simulation and Offline Programming of industrial robots has never been easier. Create your virtual environment to simulate your application in a matter of minutes. Easily generate robot programs offline for any robot controller. You don't need to learn vendor-specific programming anymore

Robot Library

Access an extensive library of industrial robot arms, external axes and tools from over 40 different robot manufacturers. Easily use any robot for any application, such as machining, welding, cutting, painting, inspection, deburring, and more!

Robot Accuracy

Your robot arm is not accurate enough? Calibrate your robot arm to improve accuracy and production results. Run ISO9283 robot performance tests.

Export Programs to your Robot

RoboDK Post Processors support many robot controllers, including: ABB RAPID (mod/prg) Fanuc LS (LS/TP) KUKA KRC/IIWA (SRC/java) Motoman Inform (JBI) Universal Robots (URP/script)...and much more!

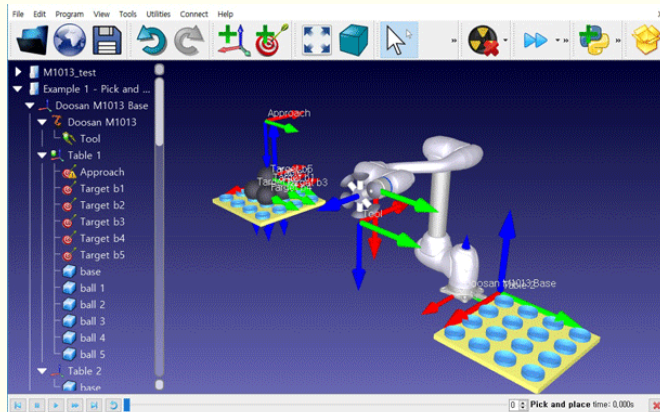
What is best about RoboDK?

- No programming skills are required with RoboDK's intuitive interface
- You can easily program any robot offline with just a few clicks
- RoboDK has an extensive library with over 500 robot arms

What is RoboDK

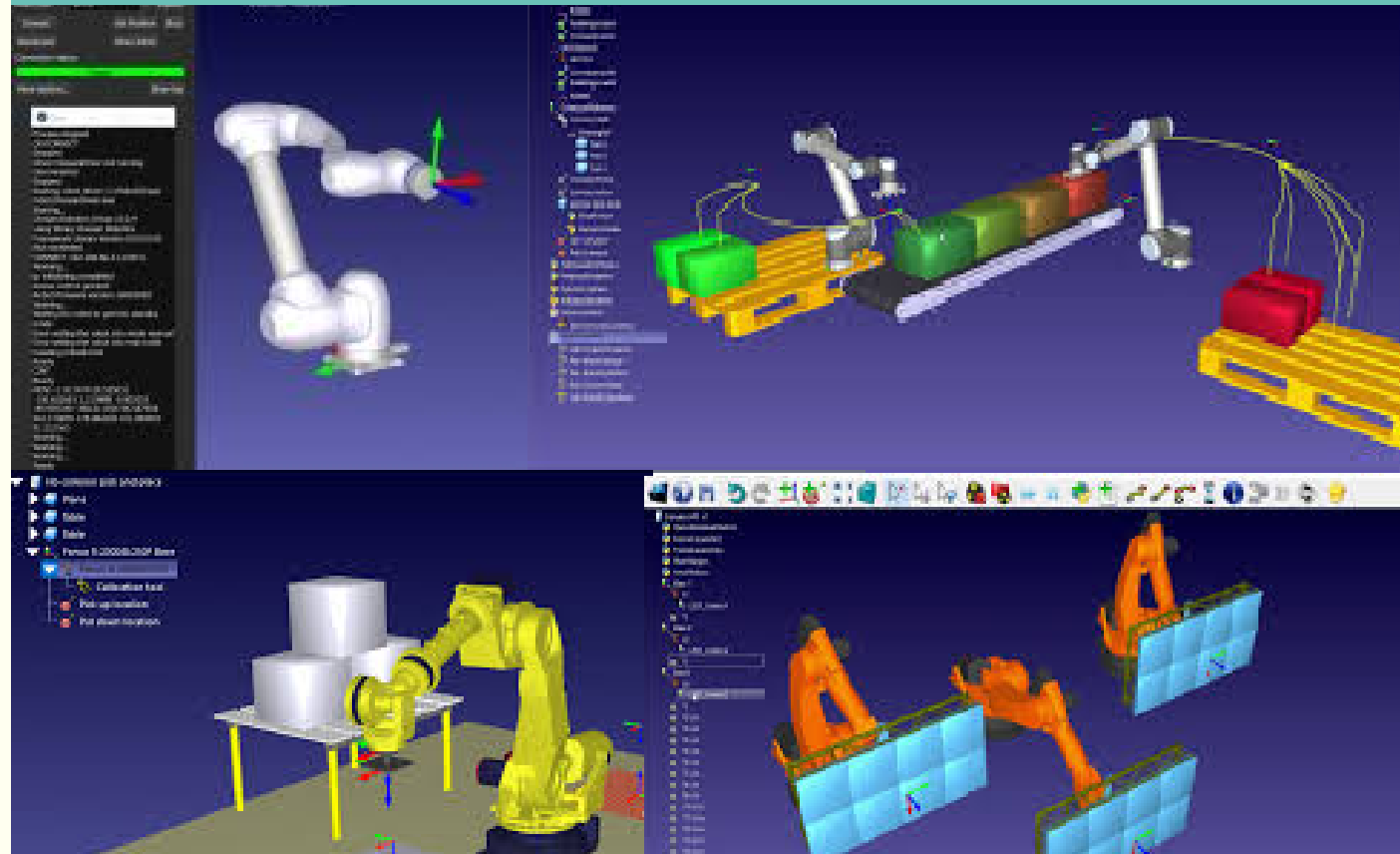
RoboDK is a powerful and cost-effective simulator for industrial robots and robot programming.

RoboDK simulation software allows you to get the most out of your robot.



Autobots is the
Authorized Partner for
RoboDK.

Get in touch for free 30
day License to check out
the features



CONTACT US

25,Crescent Road, West Shenoy Nagar,
Chennai - 600 030

www.autobots-inc.com

email : contact@autobots-inc.com

