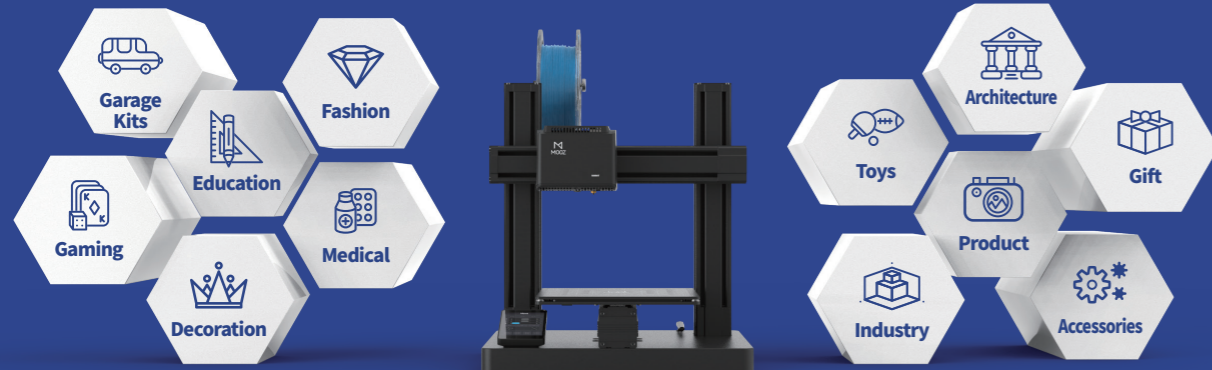


## Applications



## Product Parameters

### General

Overall Dimensions	355 * 355 * 390mm
Adapter Input	100-240V-50/60Hz, 1.8A Max.
Adapter Output	12V-10A
Frame Material	Aluminum alloys
Operation Panel	3.5-inch color touchscreen
Connectivity	WiFi, USB cable, USB flash drive
Net Weight	10kg
Shipping Weight	15kg
Shipping Size	X460 * Y425 * Z510mm
Certifications	CE ROHS FCC MIC MSIP NCC C-TICK

### Laser Engraving

Work Area	X200 * Y200mm
Laser Power	1.6W
Laser Class	Class 4
Laser Service Life	4000hrs (non-continuous using)
Supported Materials	Wood, bamboo, leather, paper, plastic, fabric, no-transparent acrylic
Supported Files Types	JPEG, JPG, PNG, SVG, etc.

### CNC Carving

Work Area	X200 * Y200mm
Spindle Speed	8000rpm Max.
CNC Chuck Clamping Range	0-4mm
Size of Standard CNC Bit	3.175mm * 0.3mm * 30° V cutter, 1.5mm spiral milling cutter
Supported Materials	Wood, bamboo, acrylic, PCB, carbon fiber sheet, plastic, etc.

### 3D Printing

3D Printing Technology	FDM
Nozzle Diameter	0.4mm
Layer Resolution	0.05-0.3mm
Filament Diameter	1.75mm
Nozzle Temperature	250° C Max.
Nozzle Material	Brass
Extruder	Direct dual-drive extruder, 2.35 reduction ratio
Heat Bed Material	Glass platform + Flexible steel print sheet
Heat Bed Temp.	80°C Max. (at 25° C ambient temperature)
Forming Size	X200 * Y200 * Z190mm
Supported Materials	PLA, TPU, PETG, Flexible, etc.
Supported Files Types	STL, OBJ, JPEG, JPG, PNG, etc.
Effective printing speed	0-80mm/s
Ambient operating	10-40° C, 10-90% RH non condensing
Filament Runout Sensor	Mechanical switch, build inside 3D printing module
Leveling	Automatic Z-axis compensation, with magnetic independent auto leveling module
Power Loss Resume	Supported

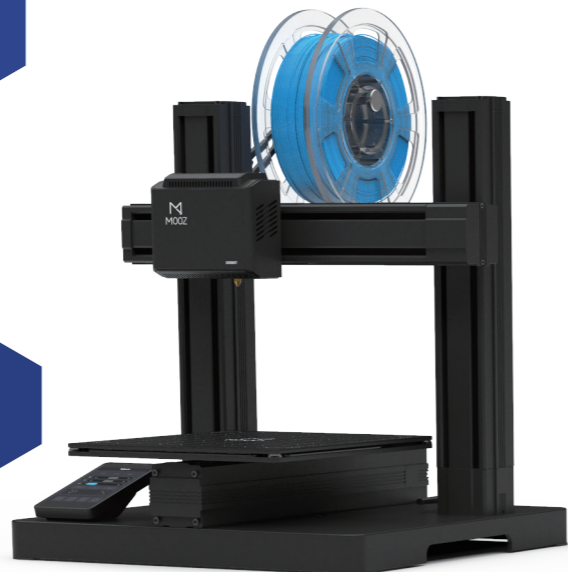


**MOOZ-2 PLUS**  
Multifunctional Modular 3D Printer



@dobotarm

Tel: +86-0755-33100907 | Email: info@dobot.cc | Web: www.dobot.cc  
Address: Floor 9-10, Building 2, Chongwen Garden, Nanshan iPark,  
No. 3370 Liuxian Blvd, Nanshan District, Shenzhen, China



# 3-in-1 3D Printer, CNC Carver and Laser Engraver

MOOZ-2 PLUS is a versatile, affordable, multifunctional desktop modular 3D printer. It can do 3D printing, laser engraving and CNC carving when installed with corresponding end tools. MOOZ-2 PLUS has garnered thousands of users across the globe and won many internationally-acclaimed awards including the Red Dot Design Award 2018, IF DESIGN AWARD 2018 for its cutting-edge R&D and advanced design concept.

## Greater Build Volume for Greater Ideas

The upgraded MOOZ-2 PLUS expands the effective print area to 200\*200\*190mm (7.87\*7.87\*7.48in), almost 3.5 times its original area of 130\*130\*130mm (4.72\*4.72\*4.72in). This elevation gives you more freedom to print larger and more complex models.

The linear module transmission solution has been optimized to ensure rigid and consistent 3D printing results with high transmission precision.



## Feature-Rich Mobile APP with Intuitive Control

Jam-packed with functions, MOOZ-2 PLUS APP has a user-friendly interface and includes straightforward guide to the printing process. The Wi-Fi enabled APP allows you to control the printer with your mobile or tablet.

## Unlock Your Creative Potential

MOOZ-2 PLUS is engineered to be modular and standardized, so experienced users can tweak the machine with interchangeable modules to match their needs, and beginners can get into printing and engraving real quick.

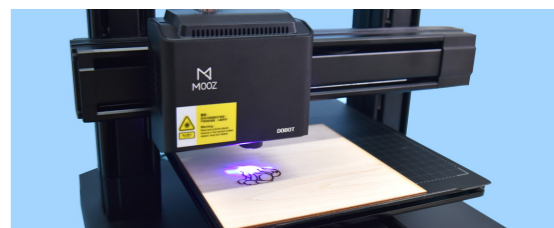
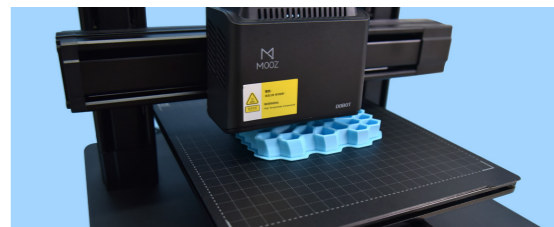


## Powerful and Intuitive Features Ignite Your Creativity

MOOZ-2 PLUS is designed with an upgraded heated bed, which comprises a magnetic removable glass platform and a flexible steel print sheet. The glass platform possesses a high modulus of elasticity and is thermally stable. Therefore, it remains flat and will ensure your bed's leveling remains consistent throughout. After printing is finished, you can easily take down the flexible steel print sheet together with the print, gently bend the steel sheet, and the print will be popped off easily. In case of the running out of filament or power failure mid-print, MOOZ-2 PLUS will pause automatically and resume printing until a new spool of filament is loaded or power regained. With a removable auto-leveling module, MOOZ-2 PLUS requires no manual bed leveling with complex leveling systems, making print bed calibration quick and easy. The latest deceleration dual-drive extruder delivers consistent extrusion and makes a better fit for TPU and other flexible filaments, giving users a smooth 3D printing experience.

MOOZ-2 PLUS comes with a 1.6w laser unit, which, compared to the old 0.5w one, is able to engrave 3 times faster and cut through some thin materials.

MOOZ-2 PLUS is also designed for CNC carving. The CNC clamps have been optimized to hold the material more securely. An MDF board is added to separate the material and platform, making CNC carving safer.

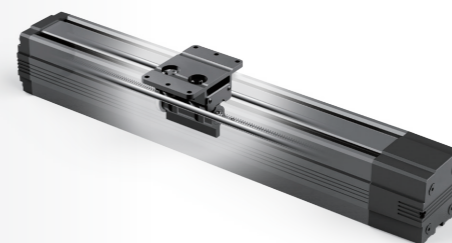
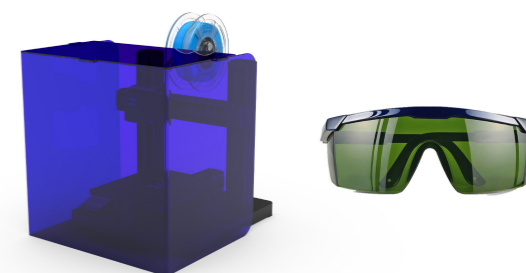


## Touch Control Panel with Upgraded User Interface

Responsive and easy to use, the touch control panel provides user-friendly operation instructions, helping users with minimal printing experience getting into 3D printing in a snap.

## Safety Goggles and Shield

MOOZ-2 PLUS comes with a pair of goggles for laser engraving and CNC carving. Also, a safety sensor featured protective shield is provided to cover the machine during operation. If the shield is opened or removed during laser engraving and CNC carving, the sensor will be triggered to pause the operation automatically for safety.



## High-Strength Bearing Steel Roller Rail for Greater Rigidity & Transmission Accuracy

MOOZ-2 PLUS adopts industrial high strength bearing steel roller rail, stepping motor and lead screw. Precise movements and 0.02mm positioning repeatability make your creation exquisite and well-crafted. The 3D printer's frame is made of aerospace grade aluminum to make the frame more stable and reduce vibration during operation.