

Hecate

Goddess of the Crossroads

Hecate is the ancient goddess of witchcraft, magic, and crossroads. Associated with the moon and underworld, she guides through liminal spaces and shadow work. Often depicted with torches and keys, she offers protection, transformation, and wisdom to those who seek her guidance.

Correspondences

Title: Goddess of Witchcraft,

Magic, Crossroads, and the Underworld

Symbols: Keys, Torches,

Crossroads, Serpents, Dogs

Animals: Dogs (especially

black), Snakes, Owls, Wolves

Colors: Black, Silver, Purple, Red

Elements: Fire, Earth, Water

Planets: Moon, Pluto

Herbs: Mugwort, Lavender,

Garlic, Cypress, Belladonna

Crystals: Obsidian, Moonstone,

Labradorite, Onyx, Hematite

Offerings: Eggs, Garlic, Wine,

Bread, Honey, Coins



Hecate's Correspondences

Day: Monday

Deity Associations:

Persephone, Demeter,

Hermes

Moon Phase: Dark Moon,

New Moon

Sabbat: Samhain

Astrological Signs: Scorpio,

Cancer

Sacred Plants: Yew, Willow,

Datura

Invocation to Hecate

"Hecate of the Crossroads, Guardian of the Night,
With your torches, guide me through the darkness,
I call upon your wisdom, your strength, and your sight,
Illuminate the path and bless my magic tonight.
So mote it be."

Hecate's Ritual for Shadow Work

You will need:

Black candle

Obsidian stone

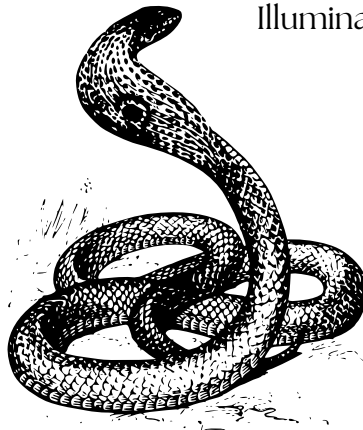
Mugwort incense

Mirror

Journal and pen

Instructions:

1. Light the candle and incense. Sit in front of the mirror and gaze into it.
2. Hold the obsidian for grounding and begin meditating on your shadow side.
3. Invoke Hecate for guidance using the provided invocation.
4. Write down what you discover, and after the ritual, bury the page as an act of release.



Work with Hecate

Shadow Work: Call upon Hecate to guide you in exploring your shadow self and releasing fear or blockages.
Crossroads Rituals: Perform rituals at physical or symbolic crossroads to seek guidance, protection, or make important decisions.

Protection Magic: Light a black candle and invoke Hecate's power for protection and banishment spells.

Divination: Use Hecate's influence for scrying, tarot readings, or other forms of divination, especially under the dark moon.