



Above is an image of the 18th Street steel deck truss bridge.

PURPOSE OF THE STUDY

The 18th Street Bridge over the Kansas River is one of the few remaining deck truss bridges on the state highway system. Built in 1959, the bridge has undergone numerous rehabilitations over its 60-year life. The bridge is nearing the end of its service life and any further rehabilitation beyond the repairs conducted in 2018 can no longer cost-effectively maintain this structure. Therefore, it is important that KDOT determine a solution for replacement of the bridge before further rehabilitation is required.

2018 Repairs

In the summer of 2017, a bridge inspection revealed the bridge was in deteriorating condition and in need of repairs. While the bridge was never considered unsafe, it was important to address existing corrosion and prevent further deterioration. Repair plans were developed and the bridge was closed to traffic in April of 2018. Work included significant repairs to the existing steel truss.

Repairs were completed and the bridge reopened to traffic in December of 2018. It is estimated that the repairs will extend the service life of the bridge 5 to 10 years.

Study Approach

The Bridge Replacement Study will consist of three phases. The study team is now finishing Phase I which has focused on understanding the current status of the bridge and the various components that could impact the replacement solution. Using the information gathered during Phase I, bridge replacement alternatives will be evaluated during Phase II and a preferred alternative for replacement will be selected. Phase III will present the preferred alternative at a public meeting and in a final study report.

Project Area

The study limits are generally along 18th Street Expressway (US-69) from Steele Road interchange to Kansas Avenue (K-32) in Kansas City, Kansas and Wyandotte County.



Traffic & Safety

Analysis of the anticipated future traffic determined that the existing roadway has capacity to safely and efficiently carry the current and projected traffic volumes both on the 18th Street Expressway and at each of the study intersections. As the bridge replacement alternatives are developed, opportunities to improve safety at individual intersections in addition to improving the reliability of the traffic flow on 18th Street will be analyzed. KDOT will conduct an additional high-level safety analysis to identify critical locations and potential benefits of future alternatives.

River and floodway

The current bridge does not have adequate clearance over the river and levees. During extreme high water events, the bridge spans can gather debris, which can affect the river's flow capacity.

18th Street Bridge Replacement Study

KDOT Project No. 69-105 KA-4881 01



**500
RESPONSES**



NEWS

**TOP WAYS TO BE
INFORMED**

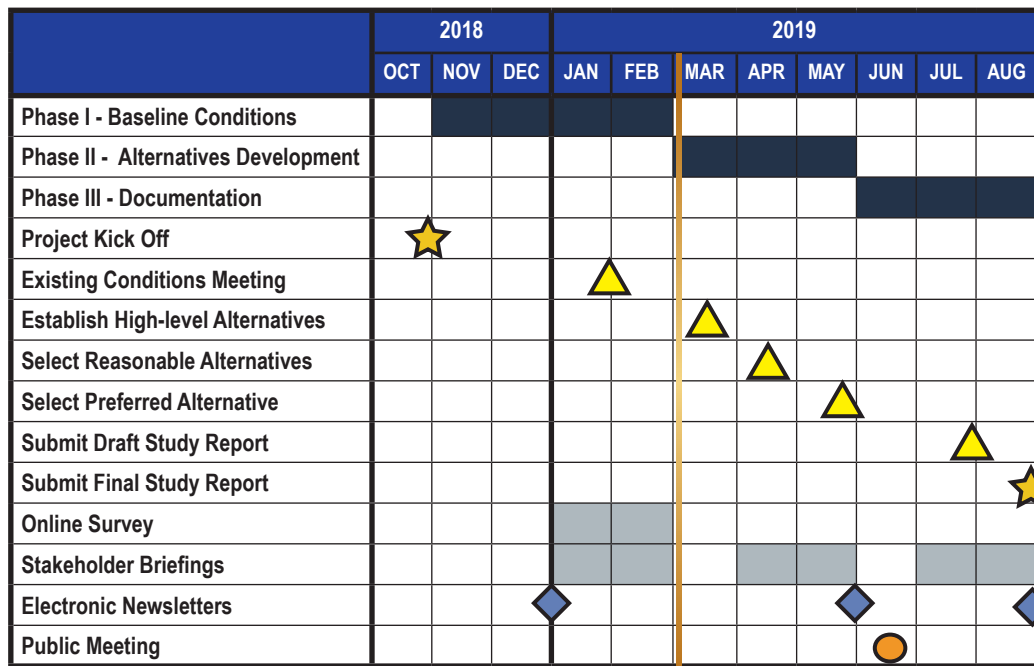
Variable message boards, news media/tv and Intelligent Transportation System (ITS) signs are the top three ways people get information regarding traffic, detours and construction.

Survey

We are listening! In January, an online survey was distributed to the community seeking public input to help assess improvement options for the 18th Street Bridge.

We received nearly 500 responses. Feedback confirms the importance of this corridor to the community, with most respondents using the 18th Street Bridge daily for their travel to/from work, shopping, medical appointments, and school. Respondents noted that the recent closure of the bridge had significant impact for those traveling the bridge daily and added additional travel time to their daily trips. Respondents also indicated they would like to see enhancements such as lighting improvements and bicycle and pedestrian accommodations. Other key findings from the survey include:

- Most people would like the construction done in the shortest amount of time, without compromising safety.
- Quality communication about alternate routes and anticipated travel times is most important during construction.
- Drivers indicated that a delay of 6-10 minutes during construction was acceptable for the work to get done safely and efficiently.



Legend

- Project Study Phases
- Public Involvement Activities
- ★ Kick Off/Completion Milestones
- ▲ Key Project Milestones
- ◆ Public Information Touch Points
- Public Meeting

WE ARE HERE

The 18th Street Bridge Replacement Study project kicked off in November of 2018 and a Preferred Alternative will be recommended by fall of 2019. A public meeting will be held in the summer of 2019 to provide information to the community. The public meeting will be an open house format to allow an opportunity to ask the project team questions about the project and preferred alternatives.

No funding has been identified for further design or construction of this project at this time.

For more information, please contact:

Benjamin Ware, PE | Road Design Leader
 700 SW Harrison St.
 Topeka, KS 66603
 785-368-8247
 Benjamin.Ware@ks.gov

