

# MDC COMMUNITY COST SHARE PROGRAMS

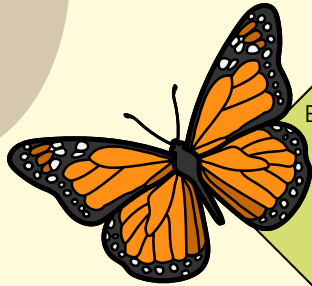


Missouri Department of Conservation's Community Cost Share Programs promote sustainable development practices and the establishment of natural resource conservation practices in municipal and community areas.



## COMMUNITY CONSERVATION

Community Conservation encourages participants to establish conservation practices in their communities with the guidance of local conservation experts. This program promotes the establishment of native plants, the use of sustainable development practices, and other public benefits through cost-share projects.



## ELIGIBLE CONSERVATION PRACTICES

Eligible projects include but are not limited to: native grass and pollinator plantings, forest and woodland management, invasive species control, and aquatic resource management. In addition, other practices eligible for cost-share include urban green space planning, engineered drawings, and training of staff on conservation-related programs.

## COMMUNITY FORESTRY

Community Forestry Cost-Share encourages communities to have a sustainable and comprehensive community forestry program with the guidance of a community forestry professional. This program promotes tree benefits through the proper management and care of trees.



## ELIGIBLE FORESTRY PRACTICES

Eligible projects include but are not limited to: tree plantings, hazard tree removals and pruning, and tree inventories. In addition, other practices eligible for cost share include assistance with city right-of-ways, assistance changing municipal tree ordinances, community readiness plans, training to improve community forestry, and development and/or distribution of tree-care-related educational materials.



## PROPOSING A PROJECT

Check our [local contacts](#) webpage to be connected with a Community Conservation Team member. After contacting us, a team member will reach out to schedule a site visit and meeting to discuss the project. Proposed projects will be reviewed by the Regional Community Conservation Team based on regional priorities.



# MDC COMMUNITY COST SHARE PROGRAMS



## FUNDING ELIGIBILITY



Eligible property includes lands that are in public ownership, such as municipal and county parks and schools, or open to the public, such as, but not limited to, community spaces, neighborhood common grounds, and land owned by non-profit organizations.

## PROJECT FUNDING PROCESS

Due to limited funding, cost share funds are available on a first-come, first-served basis beginning annually in July, though the team will accept new projects and start planning all year long. Don't be afraid to reach out and inquire about your project, even if it is later in the year.



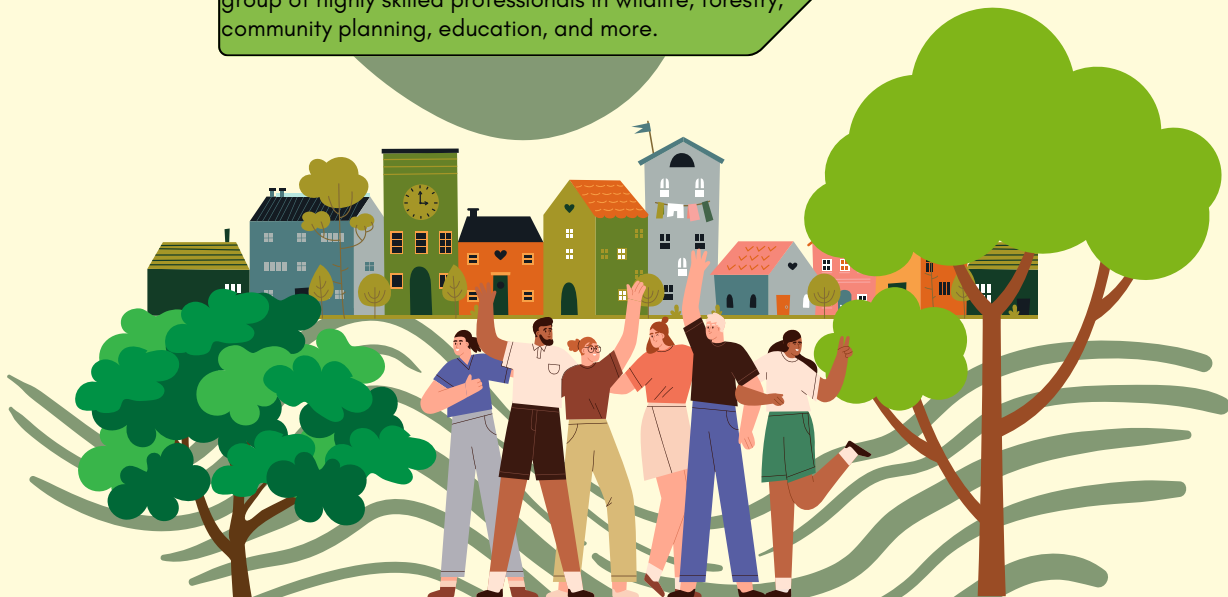
## IN-KIND MATCHES

In-kind matches can minimize cash outlays for communities and organizations. Partners can provide their contribution to the cost-share project through in-kind matches, as well as actual cash match. Examples of in-kind matches include labor of volunteers and staff, contractor costs, purchasing of materials or supplies, use of partner equipment, and educational expenses.



## OTHER ASSISTANCE

Our Community Conservation Team is available to aid in the project planning process, troubleshoot when issues arise, and connect partners with other organizations that can provide additional technical assistance. Our Community Conservation Team is made up of a diverse group of highly skilled professionals in wildlife, forestry, community planning, education, and more.



# MDC COMMUNITY COST SHARE TIER SYSTEM



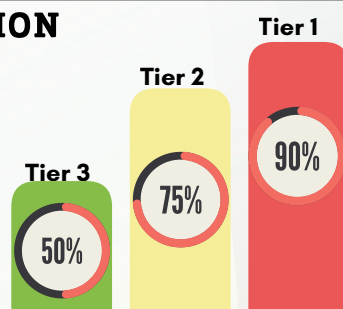
## COMMUNITY CONSERVATION TIERS

MDC has worked hard to develop a Community Cost Share system. Through a strategic approach, based on environmental and social justice factors, a Community Conservation Tier system has been created in order to prioritize cost share funding allocation.

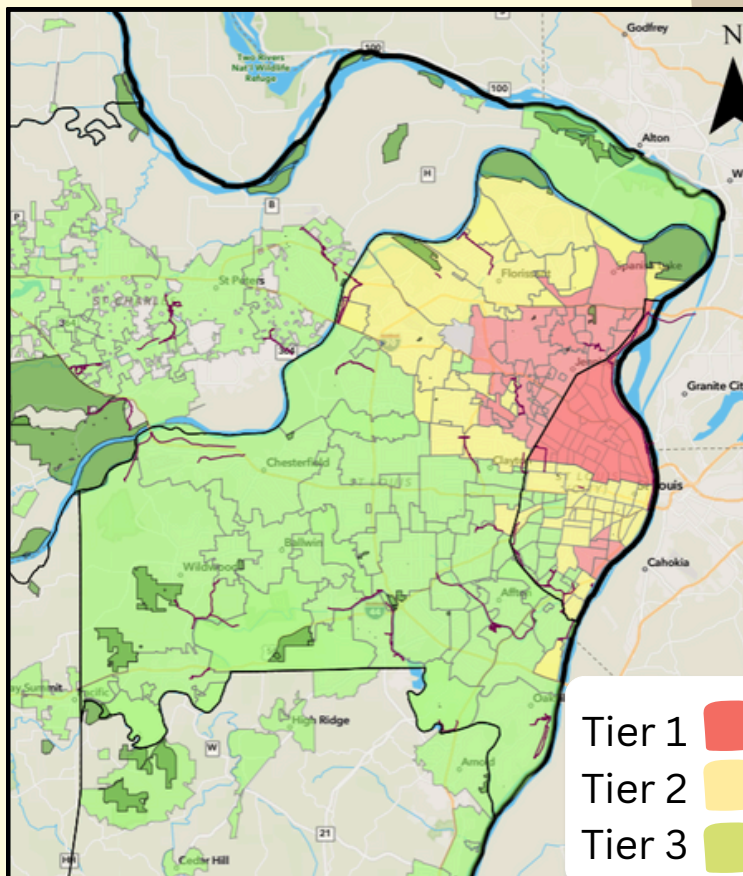


## COMMUNITY CONSERVATION TIERED APPROACH

Based on the Tier system that was developed, Cost Share funds are now allocated strategically based on community location. Tree City USA communities are eligible for higher reimbursement rates for Community Forestry Cost Share.



## SAINT LOUIS REGION COMMUNITY CONSERVATION TIER MAP



# MDC COMMUNITY CONSERVATION TEAM



## COMMUNITY AND PRIVATE LAND UNIT SUPERVISOR

Oversees the staff, funding, and technical assistance to communities and partners for long term community conservation projects, initiatives, and policies.

[ERIN.SHANK@MDC.MO.GOV](mailto:ERIN.SHANK@MDC.MO.GOV)



## COMMUNITY PLANNER

Provides technical and fiscal assistance to community projects, organizes trainings and community events, and collaborates with partners on green workforce development.

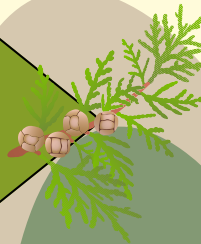
[AISHA.MUHAMMAD@MDC.MO.GOV](mailto:AISHA.MUHAMMAD@MDC.MO.GOV)



## COMMUNITY FORESTERS

Provides technical assistance and funding to communities, neighborhoods, and partners for the management and enhancement of their tree canopy.

[EVAN.PARKER@MDC.MO.GOV](mailto:EVAN.PARKER@MDC.MO.GOV)  
[AMANDA.WOOD@MDC.MO.GOV](mailto:AMANDA.WOOD@MDC.MO.GOV)



## COMMUNITY AND PRIVATE LAND CONSERVATIONIST

Provides technical assistance to communities, neighborhoods, and private landowners looking to improve their forest, fish, or wildlife habitat.

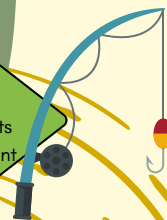
[PHOEBE.ELLIS@MDC.MO.GOV](mailto:PHOEBE.ELLIS@MDC.MO.GOV)



## COMMUNITY AND PRIVATE LANDS FISHERIES BIOLOGIST

Provides technical assistance to communities, neighborhoods, and private landowners looking to improve their aquatic resources. Assists partners with public fishing events and aquatic resource management support.

[JOHN.SCHULTE@MDC.MO.GOV](mailto:JOHN.SCHULTE@MDC.MO.GOV)



## URBAN WILDLIFE BIOLOGIST

Provides technical assistance on wildlife habitat improvement projects and woodland habitat improvements. Provides guidance to communities on wildlife issues such as white-tailed deer management, and nuisance abatement for waterfowl and coyotes.

[MIRANDA.WILKINSON@MDC.MO.GOV](mailto:MIRANDA.WILKINSON@MDC.MO.GOV)

