



PUEBLO OF ISLETA

P. O. BOX 1270, ISLETA, NM 87022

October 19, 2020

Dear Pueblo of Isleta Community:

In recent weeks we have all seen the number of positive COVID-19 cases spike across New Mexico. Now we find rising case numbers right here in our community. More than ever we must come together and stop the spread of this dangerous virus in its tracks. We all have a responsibility to protect one another, our elders and our children. Please review the following information carefully with your family so that we may work together to contain COVID-19.

- **COVID-19 Cases Are Spiking in Our Community and State-Wide.**

Circulating reports from all governmental levels indicate an alarming rise in the number of COVID-19 cases that have emerged since the Labor Day weekend. The Pueblo of Isleta is included in this reality, as we too are experiencing a spike in confirmed positive cases. In this month alone, we are receiving notification almost daily. I am sincerely concerned about this situation and implore your help.

- **Our Community Must Be Vigilant and Follow COVID Safe Practices.**

It is apparent that we have let our guard down, and as a result, the COVID-19 virus has crept into our community and is spreading quickly. The Health Center has kept me informed of the recent case investigations and has reported that families continue to host and participate in social gatherings. These activities are primary sources of COVID-19 infection spread and are not COVID Safe Practices. It is only a matter of time before someone in our community gets severely ill or dies. I understand that we are all tired and anxious to return to the normalcy we knew ten (10) months ago, however, the fact remains that the disease is still alive and present and we must continue to adhere to the mandates established throughout this pandemic.

- **Executive Orders Setting a Curfew and other Public Health Orders Are Still in Effect and Will Be Enforced.**

Executive Orders for setting curfew, to restricting access to all non-residents, and the Public Health Emergency Order 2020-02, requiring mask wearing in public, mandatory 14-day quarantine for travel or visitors, and prohibiting mass gatherings, remain in effect and must be complied with. These Orders will be enforced pursuant to the Pueblo of Isleta Communicable Disease Code, Title 40, Section 40.10.1. Any person who violates any provision of the Code will be subject to criminal prosecution and criminal penalties, including up to 90 days' imprisonment, 180 hours of community



service, a fine up to \$300, or a combination of all three. All of these documents, including the Communicable Disease Code, and other related orders can be found at www.islclinic.com. Also included with this letter are copies of key Orders.

- **Our Community Members Must Assist with Contact Tracing in Order to Control the Spread of COVID-19 at the Pueblo of Isleta.**

The Health Center has also reported that some community members are not willingly participating in critical case investigation and contact tracing. Please understand that case investigation and contact tracing are essential to prevent further spread of COVID-19. Attached you will find a CDC informational sheet on what to expect when a contact tracer calls you. As a community member, you have the responsibility to cooperate with the Tribal Health Officer or their designee in the investigation of cases, suspected cases, outbreaks, and suspected outbreaks of COVID-19.

- **Community Members Must Comply with All COVID-19 Infection Control Measures or Face Involuntary Detention.**

We all have a responsibility to comply with isolation and quarantine orders, and must notify the Tribal Health Officer of any case, suspected case, outbreak, or potential outbreak of the COVID-19 disease. This expectation is defined in the Pueblo of Isleta Communicable Disease Code, Title 40, Section 40.6.9. The Tribal Health Officer will now actively issue Involuntary Detention Orders as a result of recent non-compliance of individuals who have refused to follow voluntary isolation and quarantine orders. This is necessary for the safety of all members of our community. Any person who fails to follow voluntary isolation or quarantine orders will be subject to Involuntary Detention, which will be enforced through Tribal Court, and may include additional criminal prosecution and criminal penalties.

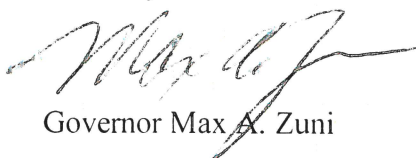
- **Community COVID-19 Testing Event October 22nd.**

Due to continued reports of social gatherings within our community, we do not know how long COVID-19 will continue to spread. For this reason, the Health Center is requesting community members get tested at the community testing event this Thursday, October 22, 2020 from 9:00 to 11:00am. Attached is a flyer giving more information about this event. I ask for your help in sharing this testing opportunity with others. Everyone's participation is necessary to help contain the alarming COVID-19 spread rate in our community.

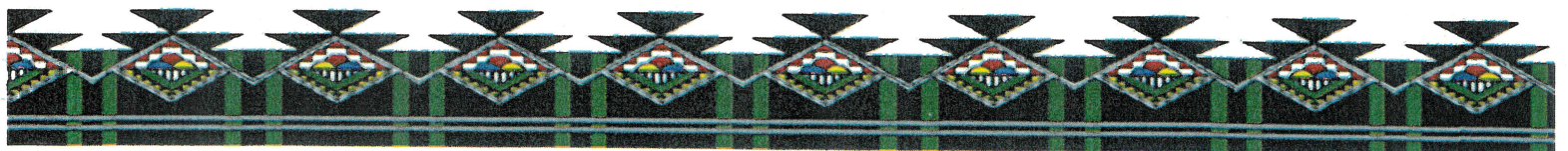
- **We Are All in this Together.**

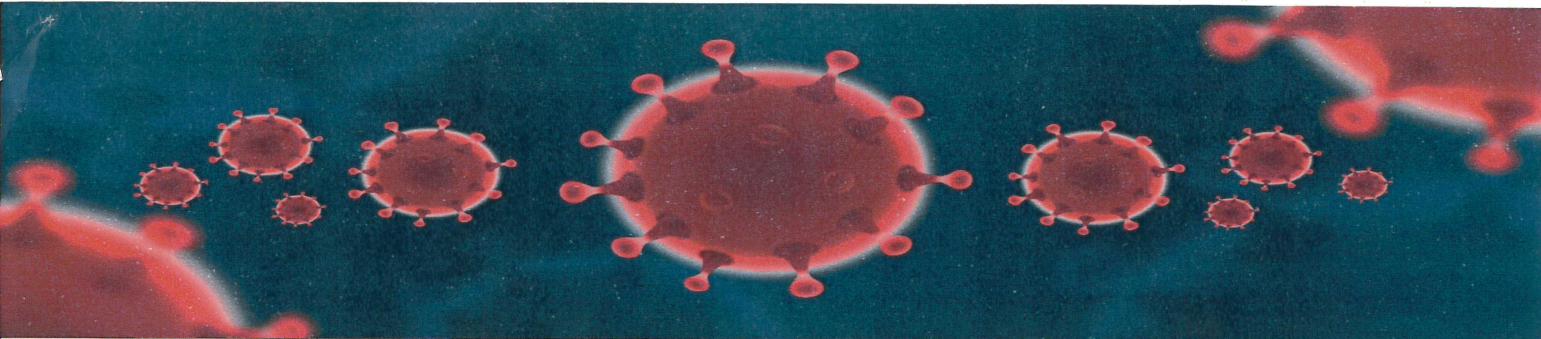
In closing, I implore that you take this disease seriously. Thank you for your attention in reviewing this important information regarding our community's health and safety.

Sincerely,



Governor Max A. Zuni





FREE DRIVE-THRU & WALK-IN COVID-19 TESTING EVENT

Thursday, October 22, 2020
9:00am – 11:00am
Main Recreation Center

- For Isleta Tribal Community Members
- Please call 869-4595 to Pre-Register
- Walk-In's Welcome

COVID-19: Why is Testing So Important?

Isleta Health Center, Stephanie Barela, 869-4479

TESTING IS THE BEST WAY TO HELP PREVENT THE SPREAD OF COVID-19.

- Testing lets you know your status of COVID-19 at the time of testing although results may take longer.
- It identifies positive COVID-19 cases quickly. This allows people to get treatment early and inform the person they must stay away from others and isolate in order to reduce the risk of spreading the virus.
- It helps investigators determine who might be a close contact of the infected person so that those people can quarantine and get tested to potentially prevent the spread.

PLEASE ANSWER ALL CONTACT TRACER PHONE CALLS AND ANSWER QUESTIONS HONESTLY.

20% OF CORONAVIRUS INFECTIONS ARE ASYMPTOMATIC, BUT ARE STILL CONTAGIOUS.

- That is, 1 in 5 people with COVID19 have no symptoms at all, but can infect others. So, even though you might feel completely fine, you could still be getting others sick, which is why it is important to get tested even if you feel normal.
- You could also spread the virus if you are pre-symptomatic, meaning that you might feel fine right now, but you could be COVID19 positive and still spread the virus before you start to feel any symptoms. Because of this, it is very important to always wear a mask when around others, wash your hands often, not touch your eyes, nose, or mouth, and stay at least 6 feet away from others. Simply being near someone who is COVID19 positive can infect you with the virus, even if the person feels normal!

Help Keep Isleta Healthy, get tested for COVID19!



PUEBLO OF ISLETA

1 SAGEBRUSH STREET
P.O. BOX 580
ISLETA, NM 87022

PUBLIC HEALTH EMERGENCY ORDER 2020-02

PUEBLO OF ISLETA

JULY 30, 2020

1. The intent and purpose of this Public Health Emergency Order is to prevent and mitigate community spread of COVID-19 within the Pueblo of Isleta.

THEREFORE, NOTICE IS GIVEN that, pursuant to the Tribal Health Officer authority set forth in Title 40, Communicable Disease Code, Pueblo of Isleta, effective May 11, 2020, as adopted by Tribal Council Resolution No. 2020-016 on May 7, 2020, I hereby order that:

- A. All individuals two years of age and older within the external boundaries of the Pueblo of Isleta are required to wear a mask while in public, except when eating, drinking or exercising.
- B. Any person who travels outside of the state of New Mexico for any reason is required to quarantine for 14 days upon their return. Any person who makes contact or visits such a person in quarantine is required to subsequently quarantine for 14 days from the date of last contact of the person in quarantine.
- C. Any visitor from outside of the state of New Mexico is required to quarantine for 14 days prior to making any contact with any other person.
- D. Any person or household member that allows a visitor from outside the state of New Mexico is required to subsequently quarantine for an additional 14 days from the date of last contact with the visitor.
- E. Mass gatherings are prohibited.

NOTICE IS FURTHER GIVEN that the all persons within the external boundaries of the Pueblo of Isleta must abide by the following preventive measures:

1. All persons should perform frequent hand washing with soap and water for at least 20 seconds, or frequently use a hand sanitizer that contains at least 60% alcohol.
2. Maintain social and physical distancing. Keep at least 6 feet away from others when out of the home.
3. Avoid touching the face, nose, eyes or mouth.



PUEBLO OF ISLETA

1 SAGEBRUSH STREET
P.O. BOX 580
ISLETA, NM 87022

Definitions:

1. Mask: A facial covering designed to filter breathing through both the nose and mouth and thereby contain or limit respiratory droplets. A mask must snugly cover the face around both the nose and mouth. This may be a commercially made facemask or a homemade cloth face covering such as those found on the Centers for Disease Control and Prevention (CDC) website: <https://www.cdc.gov/coronavirus/2019-ncov/prevent-getting-sick/diy-cloth-face-coverings.html>
2. Public: Any area outside of an individual's residence wherein one could come in close contact with someone not from the individual's household.
3. Visitor: Any person, including tribal members, arriving from outside of the state of New Mexico.
4. Quarantine: The physical separation of someone potentially exposed to infection from others. Quarantine helps prevent spread of disease that can occur before a person knows they are sick or if they are infected but have no symptoms. People in quarantine are required stay in a designated location of residence at all times, remain separate from all others, and monitor their health for the entire quarantine period.
5. Mass gathering: Any public gathering, private gathering, organized event, or other grouping that it brings together (five) 5 or more individuals and a single room or connected space, confined outdoor space or open outdoor space. Businesses, workplaces, houses of worship, and places of lodging do not qualify as mass gatherings but must adhere to all applicable reopening policies and Executive Orders.

NOTICE IS FURTHER GIVEN that this Order shall take effect Thursday, July 30, 2020 at 6:00 PM, and shall remain in effect until otherwise ended by a subsequent Public Health Emergency Order.

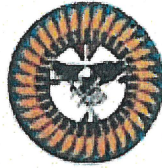
ADDITIONAL ORDERS WILL FOLLOW AS CONDITIONS WARRANT, SO ORDERED THIS 30th DAY OF JULY, 2020.

A handwritten signature in black ink, appearing to read 'Riley Nelson', written over a horizontal line.

Riley Nelson M.D.
Tribal Health Officer
Isleta Health Center Medical Director

Concur

A handwritten signature in blue ink, appearing to read 'Max A. Zuni', written over a horizontal line.
Max A. Zuni, Governor



PUEBLO OF ISLETA
P. O. BOX 1270, ISLETA, NM 87022

March 23, 2020

EXECUTIVE ORDER RESTRICTING ACCESS TO ALL NON-RESIDENTS

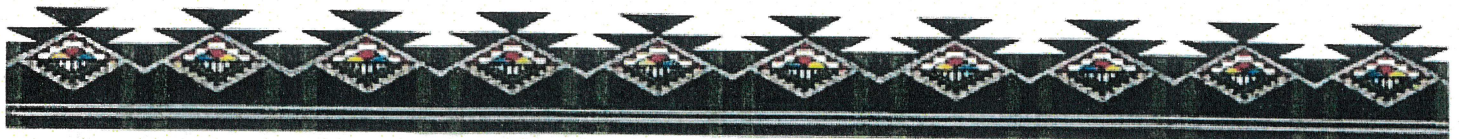
On March 13, 2020 the Pueblo of Isleta Tribal Council enacted Resolution No. 2020-011, Authorization for a Declaration of Emergency and an Emergency Operations Plan, to respond to the Coronavirus (COVID-19) pandemic. For the reasons stated in Resolution No. 2020-011, I, Governor Max Zuni, by virtue of the authority vested in me by the constitution and laws of the Pueblo of Isleta, hereby ORDER and DIRECT:

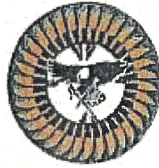
1. Restricting access to all non residents until further notice. All persons who do not lawfully reside within the exterior boundaries of the Isleta Indian Reservation will be denied access into and through Isleta Pueblo Housing Districts, effective immediately.
2. The following essential services are exempt from this Order including, but not limited to:
 - a. Home Health Care Providers
 - b. Delivery Trucks
 - c. Emergency Home Repair Services
 - d. Public Utilities

This Order supersedes any previous orders, proclamations or directives in conflict.

This Order shall take effect immediately and shall remain in effect until the Governor rescinds it.

Max A. Zuni
Governor
Pueblo of Isleta





PUEBLO OF ISLETA
P. O. BOX 1270, ISLETA, NM 87022

April 2, 2020

EXECUTIVE ORDER SETTING A CURFEW FOR ALL TRIBAL RESIDENTS

On March 13, 2020 the Pueblo of Isleta Tribal Council enacted Resolution No. 2020-011, Authorization for a Declaration of Emergency and an Emergency Operations Plan, to respond to the Coronavirus (COVID-19) pandemic. For the reasons stated in Resolution No. 2020-011, I, Governor Max Zuni, by virtue of the authority vested in me by the constitution and laws of the Pueblo of Isleta, hereby ORDER and DIRECT:

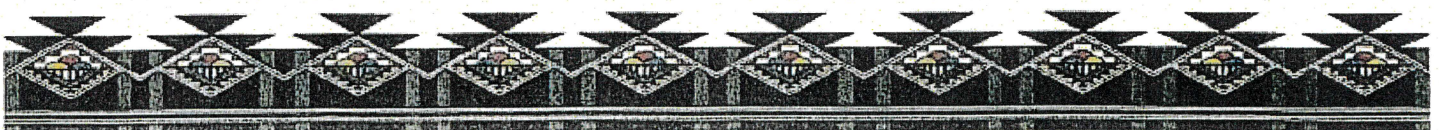
1. A curfew is imposed for all persons lawfully residing within the exterior boundaries of the Isleta Indian Reservation between 9:00 p.m. and 6:00 a.m.
2. Any person who must travel due to work or emergency situations during the curfew hours is exempt from this Order.

This Order supersedes any previous orders, proclamations or directives in conflict.

This Order shall take effect immediately and shall remain in effect until the Governor rescinds it.

A handwritten signature in cursive script, appearing to read "Max A. Zuni".

Max A. Zuni
Governor
Pueblo of Isleta

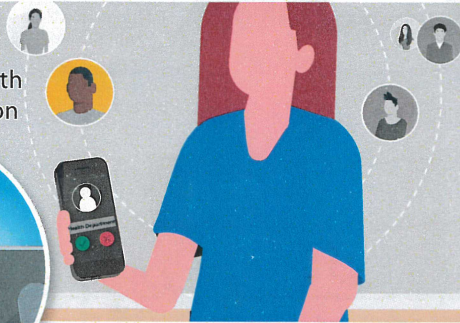


Contact Tracing: Do your part to keep your family, friends, and community safe.

WHAT YOU CAN EXPECT TO HAPPEN DURING CONTACT TRACING IF YOU HAVE BEEN DIAGNOSED WITH COVID-19.

1

If you have been diagnosed with COVID-19, a public health worker will call you to check on your health.



They will ask you who you've been in contact with and where you spent time while you were sick and may have spread COVID-19 to others.

Any information you share with public health workers is **CONFIDENTIAL**.

This means that your personal and medical information will be kept private.

2

You will also be asked to **stay at home and self-isolate**, if you are not doing so already.

Self-isolation means **staying at home in a specific room away from other people and pets, and using a separate bathroom, if possible.**

Self-isolation helps slow the spread of COVID-19 and can keep your family, friends, and community safe.



3



If you need **support or assistance** while self-isolating, the health department or a local community organization **may be able to provide assistance.**

Continue to monitor your health. **If your symptoms worsen or become severe, you should seek medical care.** Severe symptoms include trouble breathing, persistent pain or pressure in the chest, confusion, inability to wake or stay awake, or bluish lips or face.

[cdc.gov/COVID19](https://www.cdc.gov/COVID19)



U.S. Department of
Health and Human Services
Centers for Disease
Control and Prevention

CONTACT TRACING: WHAT TO EXPECT IF YOU MAY HAVE BEEN EXPOSED TO SOMEONE WITH COVID-19

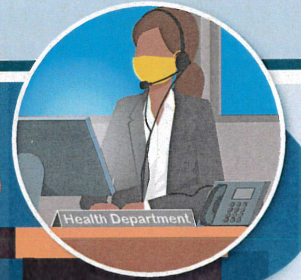
1

If you have been in close contact with someone who has COVID-19, a public health worker will call you to inform you that you may have been exposed to COVID-19.



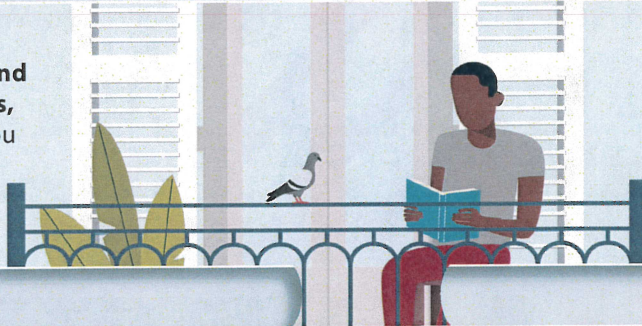
Any information you share with public health workers is **CONFIDENTIAL**.

This means that your personal and medical information will be kept private.



2

You should stay at home and self-quarantine for 14 days, starting from the last day you were possibly exposed to COVID-19.



Self-quarantine means **staying home, monitoring your health, and maintaining social distancing** (at least 6 feet) from others at all times.

3

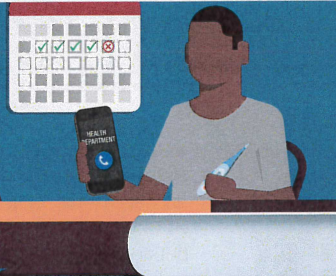
The **public health worker can provide information** about COVID-19 testing in your area.

If you need **support or assistance** with self-quarantine, your health department or community organizations may be able to provide assistance.



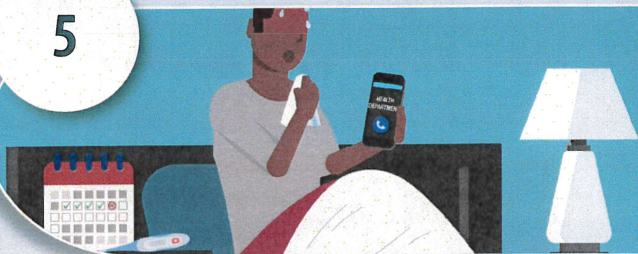
4

You should take your temperature twice a day, watch for fever and other symptoms of COVID-19, and notify your health department if you develop symptoms.



5

If you become ill during the 14 days of self-quarantine, you should notify the health department and seek medical care if your symptoms worsen or become severe. Emergency warning signs include **trouble breathing, persistent pain or pressure in the chest, confusion, inability to wake or stay awake, or bluish lips or face**.



We can all work together to help slow the spread of COVID-19.

Do your part to keep your family and your community safe: **Answer the call to slow the spread.**

