



Proudly Made in INDIA

INTEGRAL CABLE AND INTERCONNECT LLP

An ISO 9001-2015 certified company



# Highest Quality Standard Connectors

- ❖ Experience over 15 years
- ❖ Inhouse design & Manufacturing
- ❖ Pan India Presence
- ❖ Circular connector series
- ❖ An ISO 9001-2015 certified company
- ❖ Rectangular connector for aviation and Robotic industry
- ❖ Open for customized connectors as per customer voice
- ❖ Power & signal combo connector for EV

## Our Features:



**WaterProofing**  
IP67/IP68/IP69



**Rugged**  
Miniature Design




**Heavy duty**  
Robust, strong connectors



**Flammability**  
UL94V-0




**Positive Locking**



**Working Temp.**  
-45°C to +105°C




**RoHS Compliance**



**Custom Connector**



**Polarization**  
Avoid Wrong Mating



**High Mating Cycle**

## IC SERIES

- ◆ Rugged Miniature design
- ◆ Pin configuration of upto 8 signal & upto 4 power pins
- ◆ Current rating : Signal pins – 3 Amps with silver plating & 5 Amps with Gold plating  
Power pins – 10 Amps with silver plating & 20 Amps with gold plating
- ◆ IP67 / IP68 waterproofing
- ◆ UL94V-0 flammability rating material
- ◆ Positive locking keyways – Cannot be mis-mated
- ◆ Working temperature of -45°C to +105°C
- ◆ Metal body male connector available
- ◆ Front mounting & rear mounting available
- ◆ PCB mountable available



## EC SERIES

- ◆ Rugged design
- ◆ Pin configuration:
  1. 19 pin signal connector
  2. 3 Power + 7 signal combo connector
  3. 5 Power pin connector
  4. 4 Power pin connector
- ◆ Current rating :  
Signal pins – 3 Amps with silver plating & 5 Amps with Gold plating  
Power pins – 25 Amps with silver plating & 30 Amps with gold plating  
IP67 / IP68 waterproofing
- ◆ UL94V-0 flammability rating material
- ◆ Positive locking keyways – Cannot be mis-mated
- ◆ Working temperature of -45°C to +105°C
- ◆ Metal and plastic threadlock coupler available



## PS SERIES

- ◆ Integrated combo design of 2 power + 4 signal & 2 power + 6 signal
- ◆ Heavy duty, robust & strong connectors
- ◆ Polarization provided by insulator to avoid wrong mating
- ◆ Working temperature of -45°C to +105°C
- ◆ IP protection for individual female connector in mating condition as per IS/IEC 60529:2001
- ◆ Proper locking provided to sustain vibration conditions
- ◆ Solder type terminal to makes easier onsite installation
- ◆ High mating cycles



## BS SERIES

- ◆ Integrated combo design of 2 power + 8 signal
- ◆ Heavy duty, robust & strong connectors
- ◆ UL94V-0 flammability rating material
- ◆ Polarization provided by insulator to avoid wrong mating
- ◆ Metal guide for blind mating
- ◆ Working temperature of -45°C to +105°C
- ◆ IP protection for individual female connector in mating condition as per IS/IEC 60529:2001
- ◆ Solder type terminal to makes easier onsite installation
- ◆ High mating cycles
- ◆ HV insulation



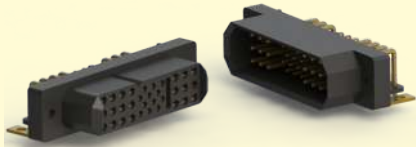
## CT SERIES

- Integrated combo design of 2 power + 4 signal & 3 Power
- Heavy duty, robust & strong connectors
- Positive locking
- RoHS compliance
- Right angle & straight options available
- UL94V-0 flammability rating material
- Working temperature of  $-45^{\circ}\text{C}$  to  $+105^{\circ}\text{C}$
- IP protection in mating condition
- Solder type terminal to makes easier onsite installation
- High mating cycles
- High current rating coming soon



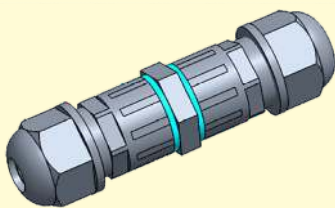
## RS SERIES

- PCB mountable right angle power + signal combo
- UL94V-0 flammability rating material
- Working temperature of  $-45^{\circ}\text{C}$  to  $+105^{\circ}\text{C}$
- Polarization provided by insulator to avoid wrong mating



## SD SERIES

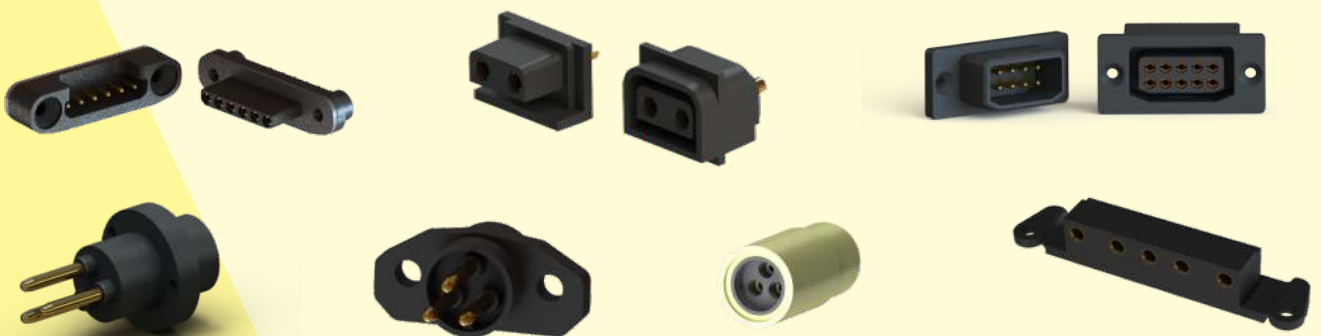
- 2 Pin male + 2 pin female combo connector
- Under water application
- Working temperature of  $-40^{\circ}\text{C}$  to  $+60^{\circ}\text{C}$



## TS SERIES

- IP 67 rating
- Screw terminal connector
- 2 pin & 3 pin
- Working temperature of  $-45^{\circ}\text{C}$  to  $+105^{\circ}\text{C}$

## CUSTOMIZED CONNECTORS



## Industries We Served

- Automotive
- IOT
- Medical
- LED Lighting
- Drones
- Robotics
- Under water
- Sensor
- Submersible pumps
- Scuba diving
- Power supplies
- Petro chemical
- Telecom
- Industrial equipment
- Aviation
- Solar



## INTEGRAL CABLE AND INTERCONNECT LLP

### Manufacturing Facility:

S.no. 44/5, Narhe Industrial association lane no.1, Narhe , Pune-411041

**Sales office:** Hyderabad & Pune.

**Distributor Location:** Bengaluru, Mumbai, Delhi, Hyderabad, Pune.

👤 Roshan Ballamwar  
☎ +91 9030038247  
✉ roshan@integralconnect.in

👤 Pavan Kumar Pottluri  
☎ +91 7659806789  
✉ pavan@integralconnect.in