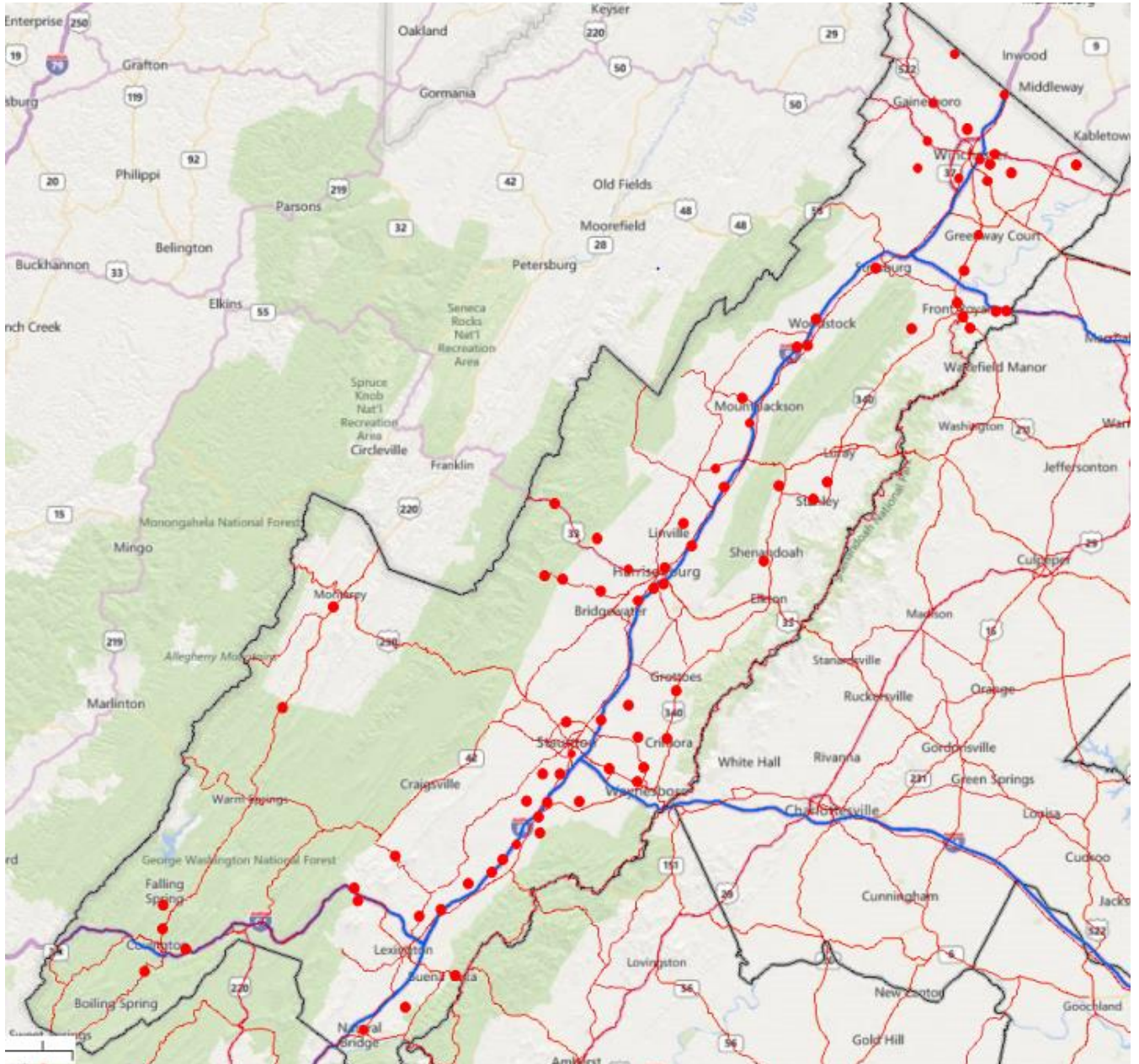


Northwestern
Regional Operations

2016 STAUNTON DISTRICT FATALITY REPORT



February 2016

The following summarizes the details associated with fatal crashes that occurred in the Staunton District during calendar year 2016. Most data is presented in either chart or table form and is focused on the location, types of crashes, and contributing factors that may have played a part in the crash.

As compared to previous years, 2016 saw the following:

- Comparable number of speed related crashes,
- Comparable number of unbelted victims,
- Less number of drivers at fault who were drinking.

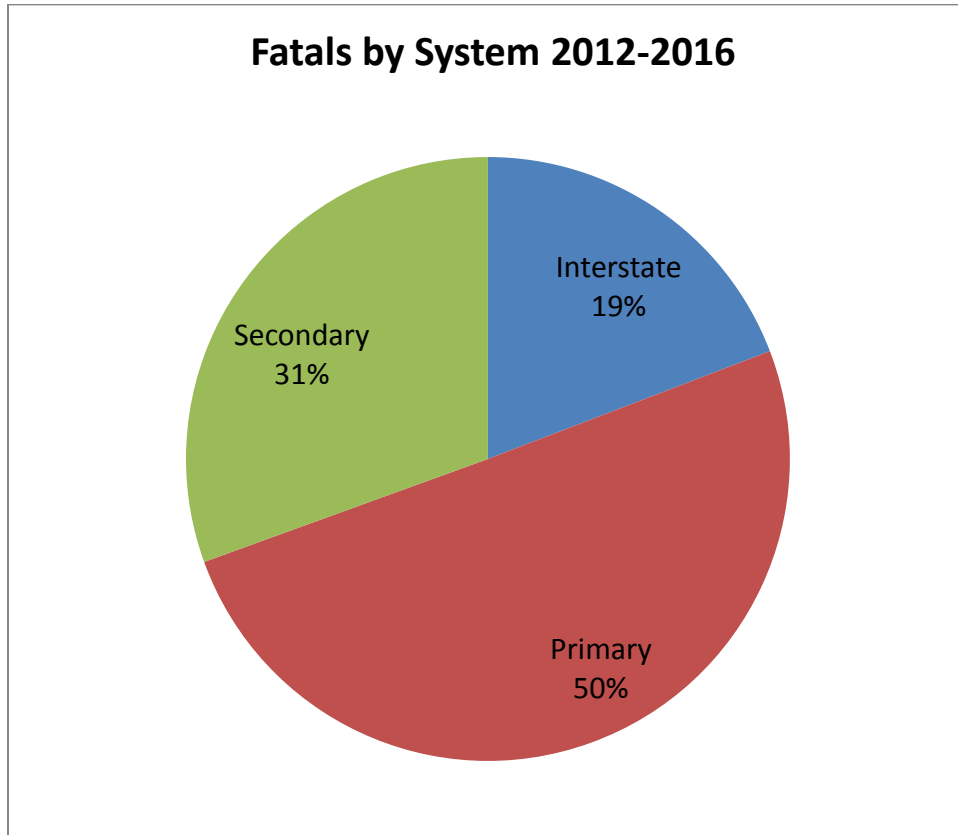
20 of 83 (24%) fatalities in the District occurred in Augusta County.

A typical fatal crash would involve:

- A male driver,
- Exceeding the speed limit or maximum safe speed,
- Departing their lane,
- Victim was not wearing a seat belt.

<u>Table of Contents</u>	<u>Page</u>
Fatals by System	2
Fatals by County	4
Fatals by Crash Type	6
The Driver at Fault	7
Seat Belt Usage	8

FATALS BY SYSTEM



2016 Fatalities by Crash Types, by Highway System

Crash Type	Interstate	Primary	Secondary
Fixed Object Off Road	8	14	18
Angle	2	7	4
Head-On	-	8	1
Rear End	4	3	-
Pedestrian	1	6	-
Sideswipe	1	1	-
Non-Collision	-	2	1
Other	1	1	-
Total All Types	17	42	24

2015 Contributing Factors to Fatalities by Highway System

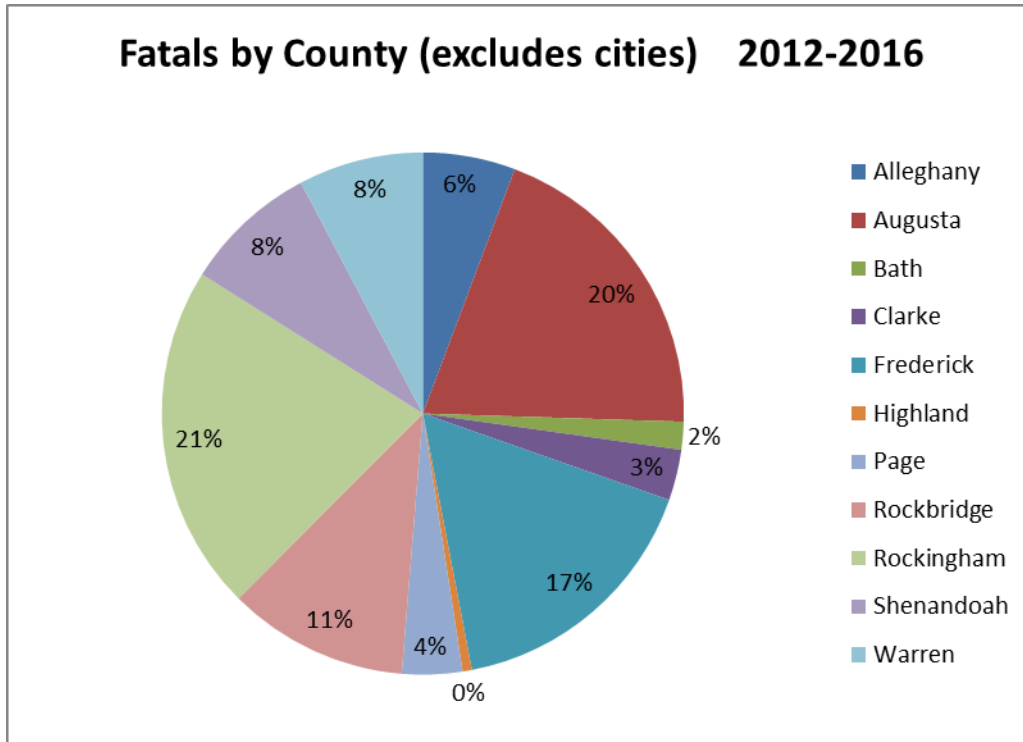
Contributing Factors *	Interstate (17)	Primary (42)	Secondary (24)
Speed	2	18	14
DUI	3	1	4
Congestion	2	-	-
Snow/Ice	-	1	-
Cell Phone	1	1	1
Asleep	2	-	-
Distraction Other	1	2	-
Driver Fatigue	2	-	1
Illness	1	3	-
Low Light	7	14	9
Curved Alignment	2	12	13
Wet Pavement	1	5	4

* Some crashes may have multiple contributing factors

- 27 fatalities (33%) occurred on curved roadway alignment
- 11 fatalities (13%) occurred on wet/snow/ice pavement surface
- 30 fatalities (36%) occurred in low light conditions
- 34 fatalities (41%) driver exceeded speed limit or maximum safe speed

Patterns of concern: Roadway Departure, Speed, Unbelted victims.

FATALS BY COUNTY



County totals exclude fatalities in Cities and Towns that maintain their own roads. (2 in Front Royal, 1 in Winchester, 2 in Harrisonburg, 1 in Waynesboro for 2016)

Summaries for those Counties with 5 or more fatalities during 2016

2016 Fatalities by Crash Type/County

Crash Type	Augusta	Rockingham	Frederick	Rockbridge	Shenandoah	Warren
Fixed Object Off Road	10	7	6	6	2	2
Angle	5	4	-	1	1	1
Pedestrian	2	1	-	-	1	-
Head – On	3	-	-	-	-	1
Rear End	-	-	1	1	2	2
Non-Collision	-	1	2	-	-	-
Side Swipe	-	-	-	1	-	-
Other	-	1	1	-	-	-
Total All Types	20	14	10	9	6	6

2016 Contributing Factors to Fatalities by County

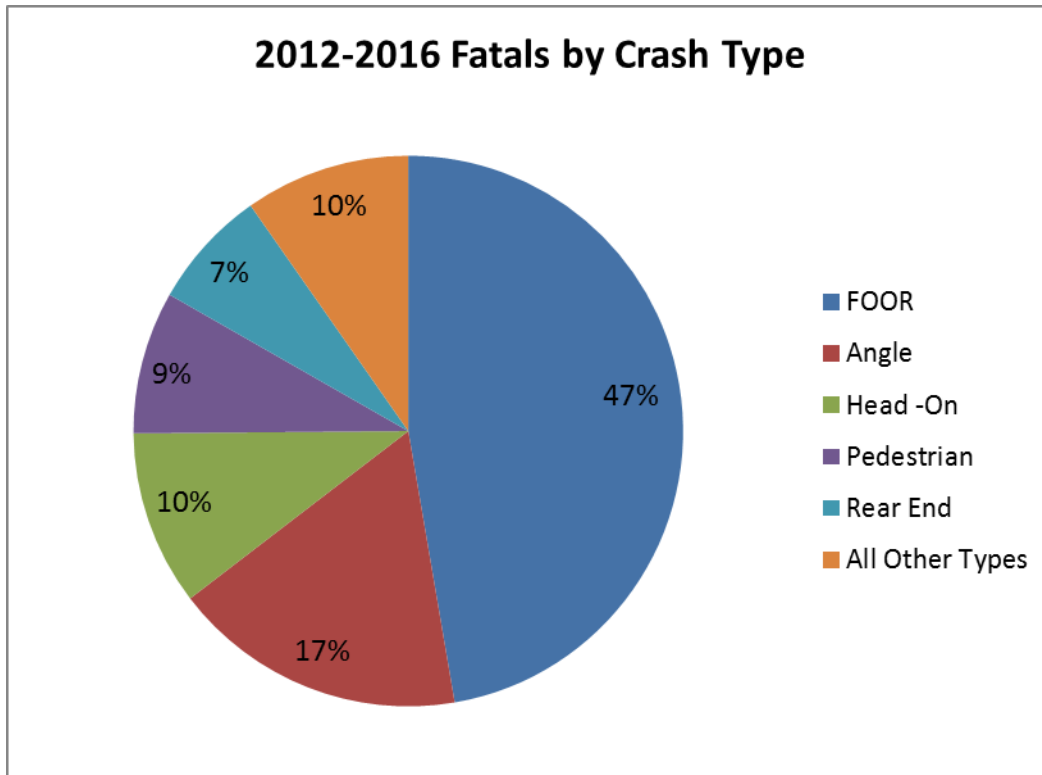
Contributing Factors *	Augusta (20)	Rockingham (14)	Frederick (10)	Rockbridge (9)	Shenandoah (6)	Warren (6)
Speed	7	6	2	5	4	-
DUI	5	-	-	1	-	-
Snow/Ice	1	-	-	-	-	-
Cell Phone	-	1	-	1	-	-
Asleep/Fatigue	1	2	-	2	-	-
Illness	1	-	1	-	1	1
Distraction Other	1	-	-	2	-	-
Low Light	7	7	4	4	2	1
Curved Alignment	4	4	4	6	-	2
Wet Pavement	1	1	1	1	-	-

* Some crashes may have multiple contributing factors

Patterns of Fatal Crashes for County:

- Augusta: Roadway Departure, DUI.
- Rockingham: Roadway Departure, Speed, Low Light.
- Frederick: Roadway Departure.
- Rockbridge: Roadway Departure, Speed, Curved Alignment.
- Shenandoah: Speed.
- Warren: None

FATALITIES BY CRASH TYPE



2016 Contributing Factors to Fatalities by Crash Type

Contributing Factors *	Fixed Object Off Road (40)	Angle (13)	Head-On (9)	Rear Ends (7)	Pedestrians (7)**	All Others (7)
Speed	20	4	4	1	2	3
DUI	6	1	-	-	-	1
Congestion	-	-	-	2	-	-
Cell Phone	2	-	-	-	1	-
Illness	4	-	-	-	-	-
Distraction Other	1	-	1	1	-	-
Driver Fatigue/Asleep	4	-	-	-	-	1
Low Light	19	-	-	1	4	6
Curved Alignment	17	2	4	-	-	4
Wet Pavement	4	2	2	-	1	2

* Some crashes may have multiple contributing factors

** 2 of 7 were workers in a work zone.

THE DRIVER AT FAULT

Age/Gender

Age	Male	Female	%
16 - 20	8	2	14
21 – 30	13	2	20
31 - 40	5	1	8
41 - 55	8	3	15
56 - 75	19	5	32
76 and Up	7	1	11
Total	60	14	-

2016 Fatalities by Crash Type/Gender

Crash Type	Male (60)	Female (14)
Fixed Object Off Road	36	5
Angle	10	3
Head - On	6	1
Rear End	5	2
Non-Collision	2	-
Sideswipe	-	2
Other	1	1
Total All Types	60	14

2016 Fatalities by Contributing Factors by Gender

Contributing Factors *	Male	Female
Speed	29	4
DUI	6	2
Driver Fatigue/Asleep	4	1
Cell Phone	2	1
Low Light	26	2
Curved Alignment	22	3
Wet Pavement	8	2

* Some crashes may have multiple contributing factors

SEAT BELT USAGE

32 of the 69 victims (46%) in automobiles were unbelted. There were 14 victims who were pedestrians, motorcyclists, bicyclists, or ATV drivers.

Unbelted Victims by Age/Gender

Age	Male	Female	%
Under 16	-	1	3
16 - 20	4	-	13
21 - 30	6	1	22
31 - 40	4	1	15
41 - 55	5	3	25
56 - 75	3	1	13
76 and Up	2	1	9
Total	24	8	100